

# Production Worksheet

Wilcom EmbroideryStudio - Designing



Design: **3**

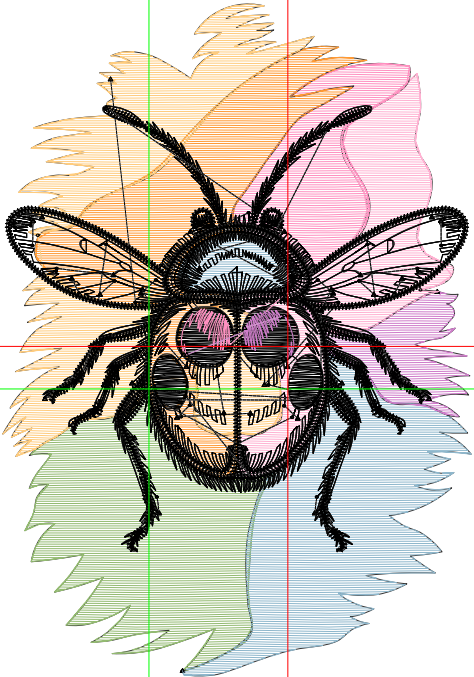
Title:

Stitches: 19,236  
 Height: 3.50 in  
 Width: 2.44 in  
 Colors: 8  
 Colorway: Colorway 1  
 Zoom: 1:1

Machine format: Tajima  
 Color changes: 9  
 Stops: 10  
 Trims: 144  
 Appliqués: 0  
 Left: 19.3 mm  
 Right: 42.6 mm  
 Up: 50.9 mm  
 Down: 38.0 mm  
 EndX: 0.72 in  
 EndY: 0.22 in  
 Area: 8.54 in<sup>2</sup>  
 Max stitch: 7.1 mm  
 Min stitch: 0.0 mm  
 Max jump: 6.2 mm  
 Total thread: 257.43ft  
 Total bobbin: 75.81ft

Stop Sequence:

#	N#	Color	St.	Code	Name	Chart
1.	6		971		R147 G186 B113	
2.	1		1,014		R142 G183 B204	
3.	2		261		R207 G124 B202	
4.	3		897		R255 G178 B210	
5.	4		460		R255 G144 B192	
6.	12		1,016	12	Orange	Default
7.	16		1,399	16	Sand	Default
8.	8		13,036	8	Black	Default
9.	4		85		R255 G144 B192	
10.	2		95		R207 G124 B202	



# Production Worksheet

Wilcom EmbroideryStudio - Designing



Design: **4**

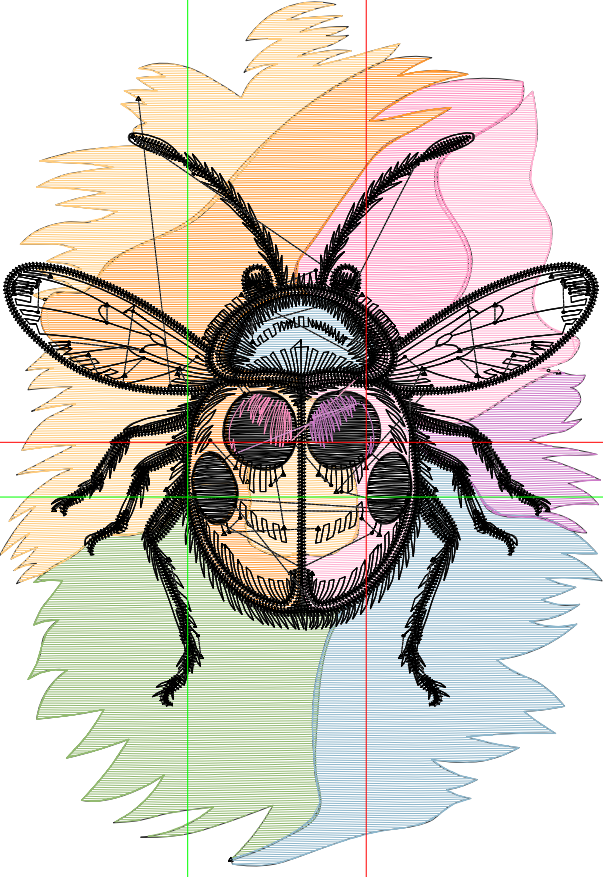
Title:

Stitches: 25,374  
 Height: 4.49 in  
 Width: 3.13 in  
 Colors: 8  
 Colorway: Colorway 1  
 Zoom: 1:1

Machine format: Tajima  
 Color changes: 9  
 Stops: 10  
 Trims: 180  
 Appliqués: 0  
 Left: 24.7 mm  
 Right: 54.7 mm  
 Up: 65.4 mm  
 Down: 48.7 mm  
 EndX: 0.93 in  
 EndY: 0.28 in  
 Area 14.05 in<sup>2</sup>  
 Max stitch: 8.9 mm  
 Min stitch: 0.0 mm  
 Max jump: 6.9 mm  
 Total thread: 361.97ft  
 Total bobbin: 113.89ft

Stop Sequence:

#	N#	Color	St.	Code	Name	Chart
1.	6		1,492		R147 G186 B113	
2.	1		1,632		R142 G183 B204	
3.	2		384		R207 G124 B202	
4.	3		1,290		R255 G178 B210	
5.	4		665		R255 G144 B192	
6.	12		1,478	12	Orange	Default
7.	16		1,971	16	Sand	Default
8.	8		16,259	8	Black	Default
9.	4		91		R255 G144 B192	
10.	2		110		R207 G124 B202	



# Production Worksheet

Wilcom EmbroideryStudio - Designing



Design: **5**

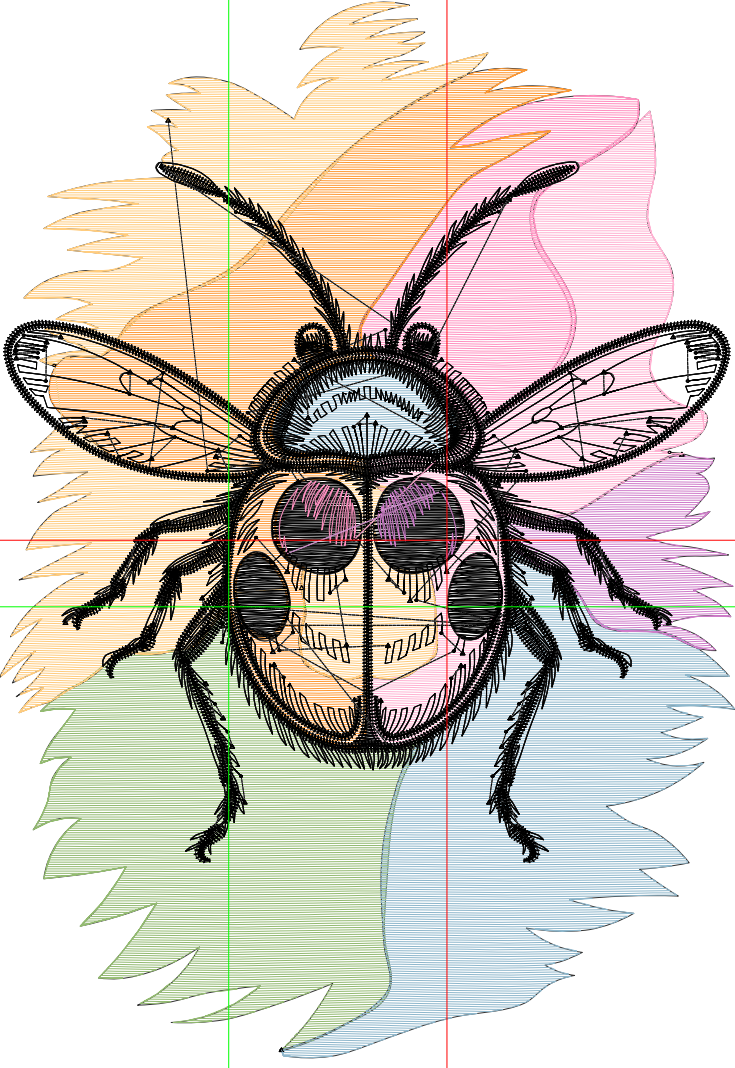
Title:

Stitches: 31,761  
 Height: 5.49 in  
 Width: 3.82 in  
 Colors: 8  
 Colorway: Colorway 1  
 Zoom: 1:1

Machine format: Tajima  
 Color changes: 9  
 Stops: 10  
 Trims: 206  
 Appliqués: 0  
 Left: 30.1 mm  
 Right: 66.9 mm  
 Up: 79.9 mm  
 Down: 59.6 mm  
 EndX: 1.14 in  
 EndY: 0.35 in  
 Area: 20.99 in<sup>2</sup>  
 Max stitch: 10.8 mm  
 Min stitch: 0.0 mm  
 Max jump: 6.7 mm  
 Total thread: 479.22ft  
 Total bobbin: 158.54ft

Stop Sequence:

#	N#	Color	St.	Code	Name	Chart
1.	6		2,034		R147 G186 B113	
2.	1		2,169		R142 G183 B204	
3.	2		537		R207 G124 B202	
4.	3		1,760		R255 G178 B210	
5.	4		923		R255 G144 B192	
6.	12		2,069	12	Orange	Default
7.	16		2,690	16	Sand	Default
8.	8		19,354	8	Black	Default
9.	4		103		R255 G144 B192	
10.	2		120		R207 G124 B202	



# Production Worksheet

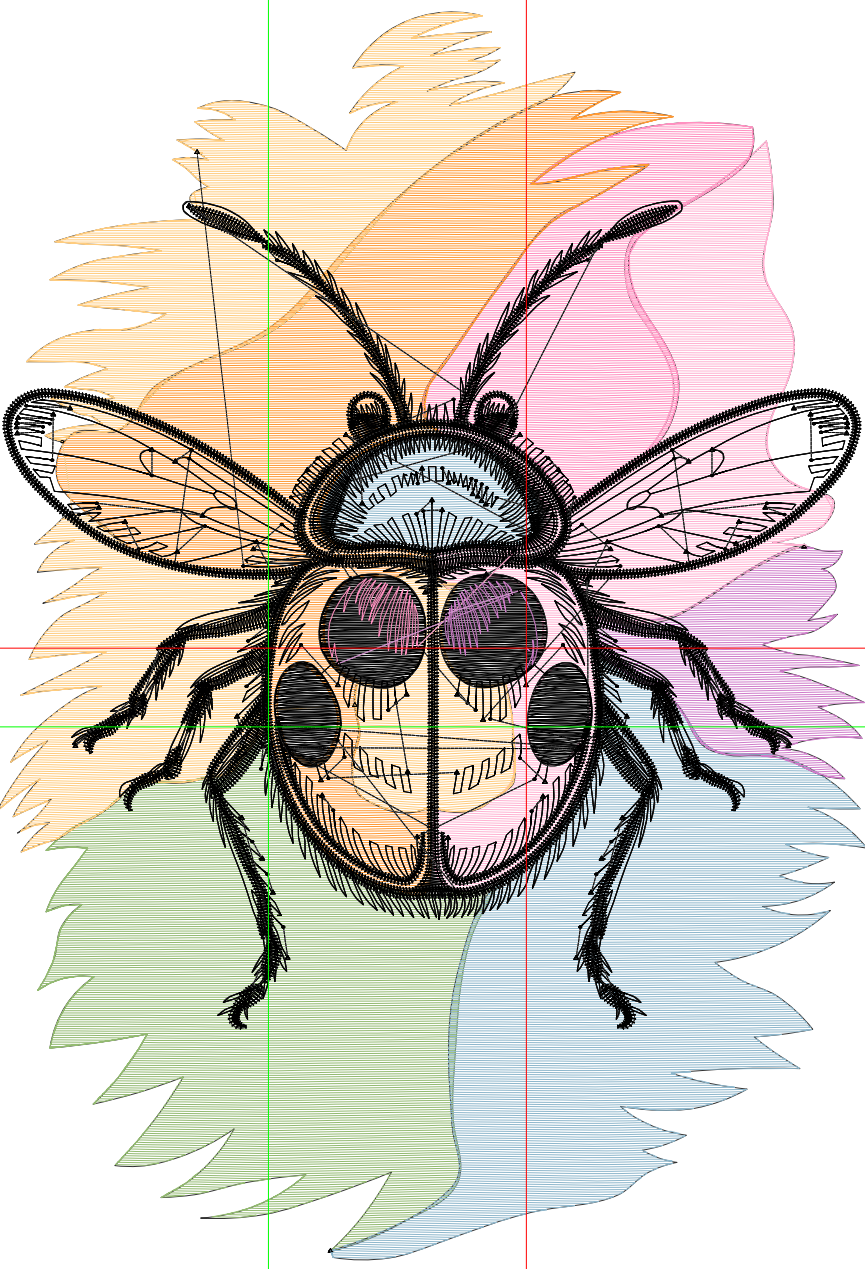
Wilcom EmbroideryStudio - Designing



Design: **6**

Title:

Stitches: 38,768  
 Height: 6.49 in  
 Width: 4.52 in  
 Colors: 8  
 Colorway: Colorway 1  
 Zoom: 1:1



Machine format: Tajima  
 Color changes: 9  
 Stops: 10  
 Trims: 228  
 Appliqués: 0  
 Left: 35.9 mm  
 Right: 78.9 mm  
 Up: 94.5 mm  
 Down: 70.3 mm  
 EndX: 1.34 in  
 EndY: 0.41 in  
 Area: 29.33 in<sup>2</sup>  
 Max stitch: 9.7 mm  
 Min stitch: 0.0 mm  
 Max jump: 6.9 mm  
 Total thread: 613.84ft  
 Total bobbin: 211.07ft

Stop Sequence:

#	N#	Color	St.	Code	Name	Chart
1.	6		2,691		R147 G186 B113	
2.	1		2,902		R142 G183 B204	
3.	2		699		R207 G124 B202	
4.	3		2,276		R255 G178 B210	
5.	4		1,231		R255 G144 B192	
6.	12		2,689	12	Orange	Default
7.	16		3,531	16	Sand	Default
8.	8		22,491	8	Black	Default
9.	4		122		R255 G144 B192	
10.	2		134		R207 G124 B202	

# Production Worksheet

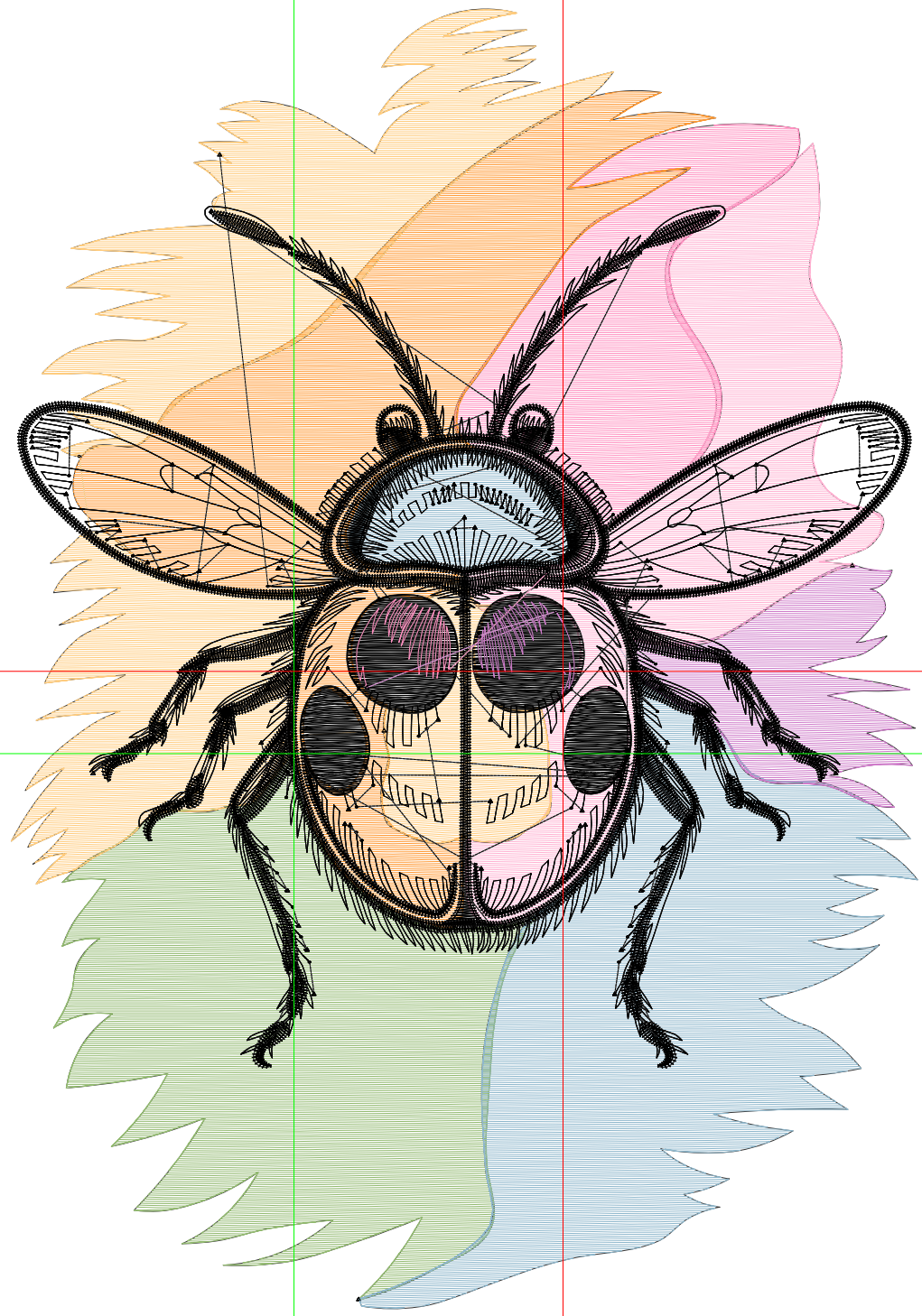
Wilcom EmbroideryStudio - Designing



Design: **7**

Title:

Stitches: 46,742  
Height: 7.50 in  
Width: 5.23 in  
Colors: 8  
Colorway: Colorway 1  
Zoom: 1:1



# Production Worksheet

Wilcom EmbroideryStudio - Designing



Design: **7**

Title:

Stitches: 46,742  
 Height: 7.50 in  
 Width: 5.23 in  
 Colors: 8  
 Colorway: Colorway 1  
 Zoom: 1:1

Machine format: Tajima  
 Color changes: 9  
 Stops: 10  
 Trims: 278  
 Appliqués: 0  
 Left: 41.4 mm  
 Right: 91.3 mm  
 Up: 109.1 mm  
 Down: 81.4 mm  
 EndX: 1.55 in  
 EndY: 0.47 in  
 Area 39.18 in<sup>2</sup>  
 Max stitch: 11.3 mm  
 Min stitch: 0.0 mm  
 Max jump: 7.0 mm  
 Total thread: 769.70ft  
 Total bobbin: 272.42ft

Stop Sequence:

#	N#	Color	St.	Code	Name	Chart
1.	6		3,499		R147 G186 B113	
2.	1		3,885		R142 G183 B204	
3.	2		877		R207 G124 B202	
4.	3		2,873		R255 G178 B210	
5.	4		1,562		R255 G144 B192	
6.	12		3,435	12	Orange	Default
7.	16		4,441	16	Sand	Default
8.	8		25,892	8	Black	Default
9.	4		133		R255 G144 B192	
10.	2		143		R207 G124 B202	