

Production Worksheet

Wilcom EmbroideryStudio - Designing



Design: **3**

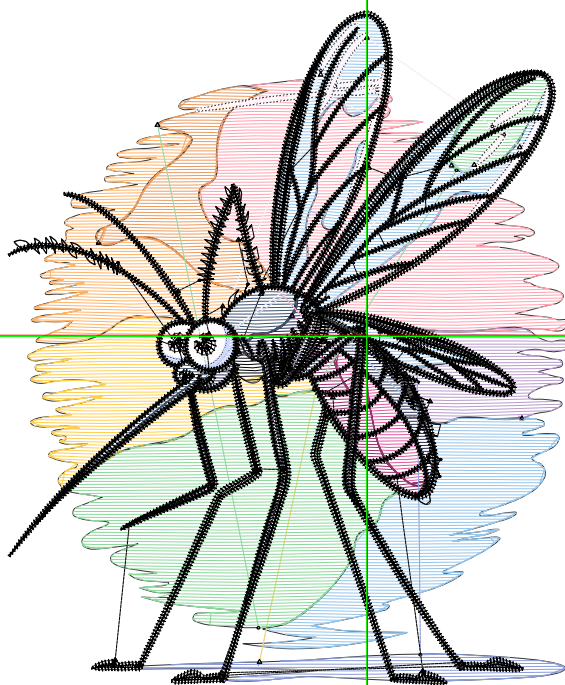
Title:

Stitches: 16,220
 Height: 3.51 in
 Width: 2.92 in
 Colors: 15
 Colorway: Colorway 1
 Zoom: 1:1

Machine format: Tajima
 Color changes: 14
 Stops: 15
 Trims: 62
 Appliqués: 0
 Left: 47.4 mm
 Right: 26.8 mm
 Up: 43.1 mm
 Down: 46.1 mm
 EndX: 0.00 in
 EndY: 0.01 in
 Area: 10.26 in²
 Max stitch: 7.6 mm
 Min stitch: 0.0 mm
 Max jump: 6.8 mm
 Total thread: 216.40ft
 Total bobbin: 62.25ft

Stop Sequence:

#	N#	Color	St.	Code	Name	Chart
1.	1		693		R38 G42 B84	
2.	3		219		R63 G85 B115	
3.	2		151		R224 G90 B160	
4.	4		220		R156 G48 B111	
5.	5		930		R255 G164 B178	
6.	6		218		R185 G156 B204	
7.	7		1,373		R150 G197 B235	
8.	9		152		R139 G156 B219	
9.	11		507		R255 G208 B80	
10.	12		433		R255 G180 B105	
11.	13		335		R235 G156 B97	
12.	10		1,095		R141 G217 B157	
13.	14		839		R255 G247 B252	
14.	15		114		R200 G213 B252	
15.	8		8,939	8	Black	Default



Production Worksheet

Wilcom EmbroideryStudio - Designing



Design: **4**

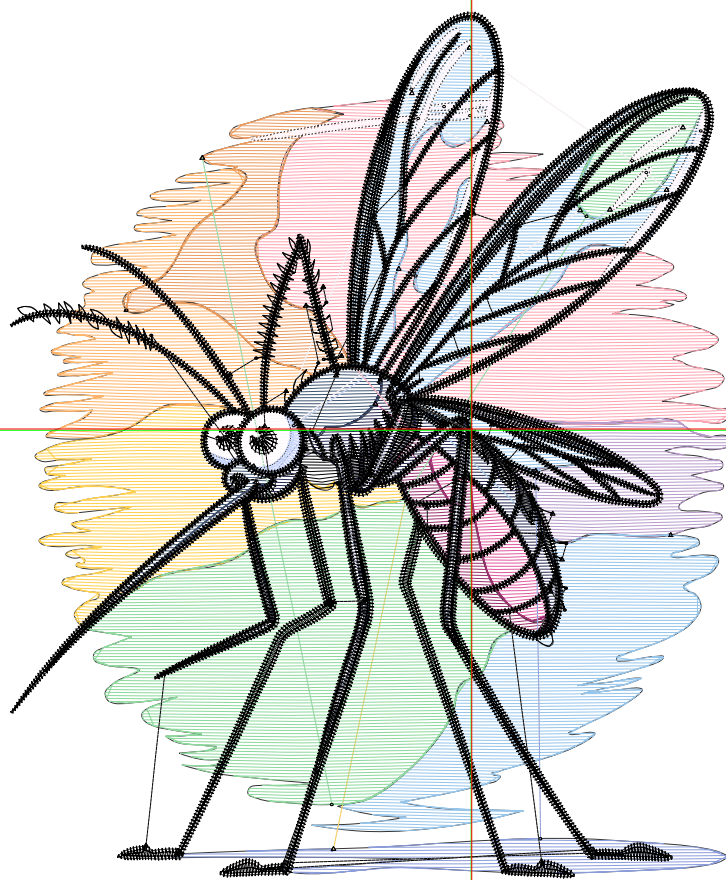
Title:

Stitches: 21,643
 Height: 4.51 in
 Width: 3.76 in
 Colors: 15
 Colorway: Colorway 1
 Zoom: 1:1

Machine format: Tajima
 Color changes: 14
 Stops: 15
 Trims: 73
 Appliqués: 0
 Left: 61.0 mm
 Right: 34.4 mm
 Up: 55.4 mm
 Down: 59.2 mm
 EndX: 0.00 in
 EndY: 0.01 in
 Area: 16.95 in²
 Max stitch: 9.7 mm
 Min stitch: 0.0 mm
 Max jump: 7.0 mm
 Total thread: 305.39ft
 Total bobbin: 93.90ft

Stop Sequence:

#	N#	Color	St.	Code	Name	Chart
1.	1		954	R38	G42 B84	
2.	3		293	R63	G85 B115	
3.	2		207	R224	G90 B160	
4.	4		305	R156	G48 B111	
5.	5		1,342	R255	G164 B178	
6.	6		342	R185	G156 B204	
7.	7		1,996	R150	G197 B235	
8.	9		202	R139	G156 B219	
9.	11		716	R255	G208 B80	
10.	12		614	R255	G180 B105	
11.	13		480	R235	G156 B97	
12.	10		1,619	R141	G217 B157	
13.	14		1,075	R255	G247 B252	
14.	15		143	R200	G213 B252	
15.	8		11,353	8	Black	Default



Production Worksheet

Wilcom EmbroideryStudio - Designing



Design: **5**

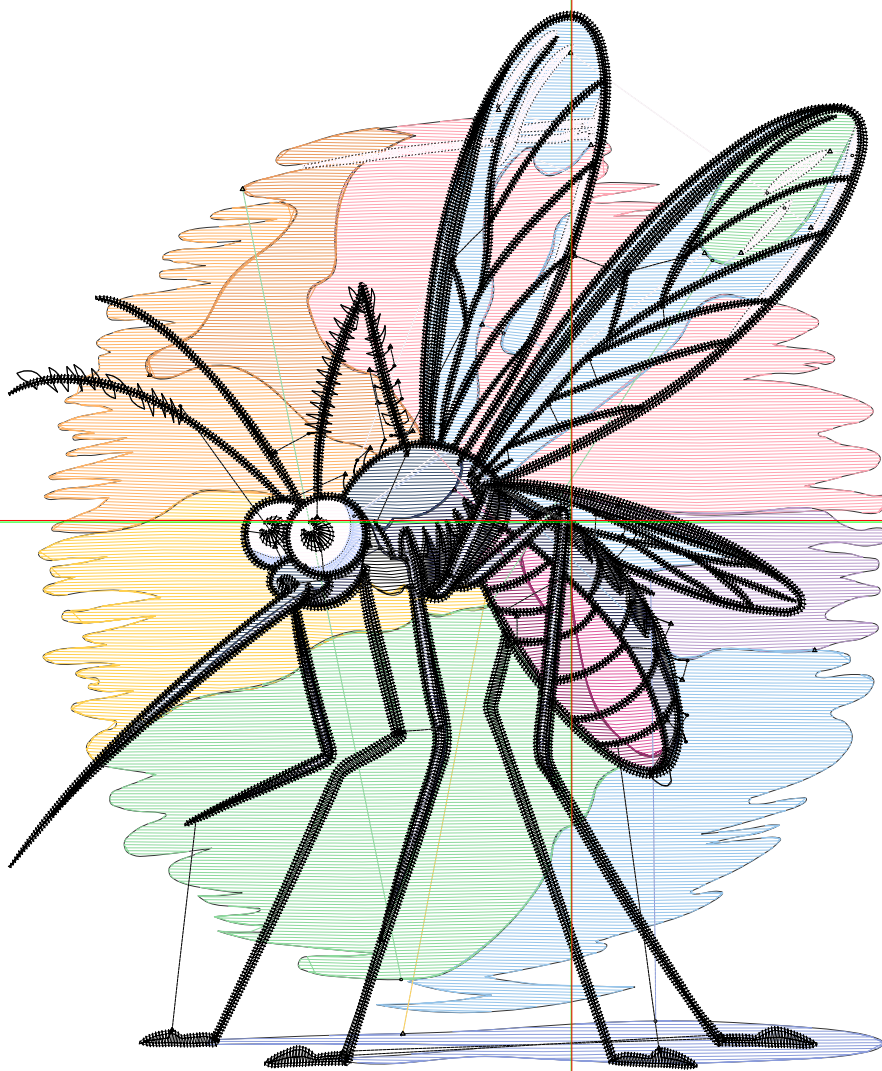
Title:

Stitches: 27,478
 Height: 5.51 in
 Width: 4.59 in
 Colors: 15
 Colorway: Colorway 1
 Zoom: 1:1

Machine format: Tajima
 Color changes: 14
 Stops: 15
 Trims: 83
 Appliqués: 0
 Left: 74.5 mm
 Right: 42.1 mm
 Up: 67.6 mm
 Down: 72.4 mm
 EndX: 0.00 in
 EndY: 0.01 in
 Area: 25.30 in²
 Max stitch: 11.9 mm
 Min stitch: 0.0 mm
 Max jump: 7.0 mm
 Total thread: 407.44ft
 Total bobbin: 131.69ft

Stop Sequence:

#	N#	Color	St.	Code	Name	Chart
1.	1		1,227	R38	G42 B84	
2.	3		352	R63	G85 B115	
3.	2		274	R224	G90 B160	
4.	4		392	R156	G48 B111	
5.	5		1,851	R255	G164 B178	
6.	6		452	R185	G156 B204	
7.	7		2,656	R150	G197 B235	
8.	9		325	R139	G156 B219	
9.	11		946	R255	G208 B80	
10.	12		848	R255	G180 B105	
11.	13		621	R235	G156 B97	
12.	10		2,235	R141	G217 B157	
13.	14		1,321	R255	G247 B252	
14.	15		172	R200	G213 B252	
15.	8		13,804	8	Black	Default



Production Worksheet

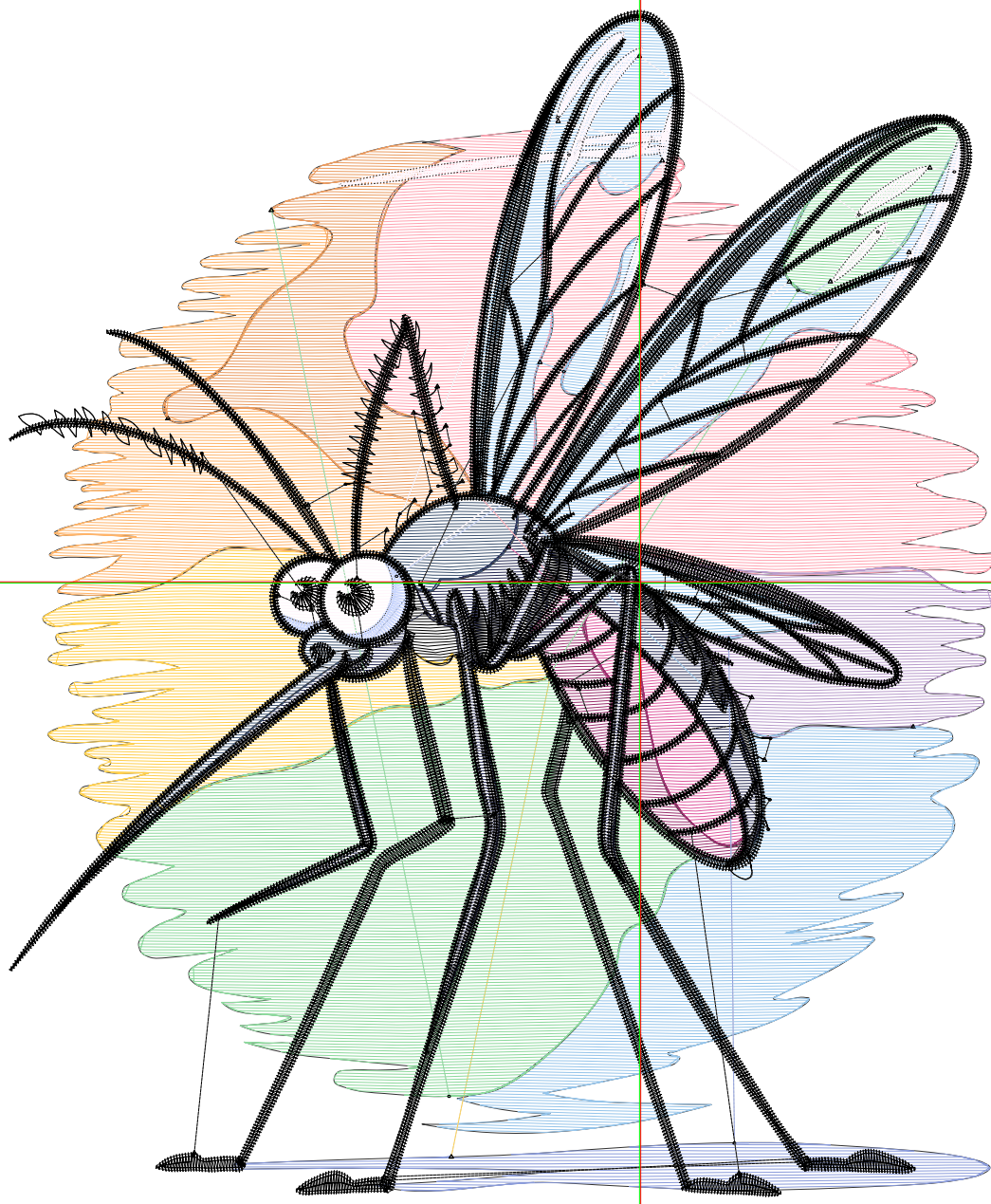
Wilcom EmbroideryStudio - Designing



Design: **6**

Title:

Stitches: 33,689
Height: 6.51 in
Width: 5.42 in
Colors: 15
Colorway: Colorway 1
Zoom: 1:1



Production Worksheet

Wilcom EmbroideryStudio - Designing



Design: **6**

Title:

Stitches: 33,689
 Height: 6.51 in
 Width: 5.42 in
 Colors: 15
 Colorway: Colorway 1
 Zoom: 1:1

Machine format: Tajima
 Color changes: 14
 Stops: 15
 Trims: 87
 Appliqués: 0
 Left: 87.9 mm
 Right: 49.8 mm
 Up: 79.9 mm
 Down: 85.6 mm
 EndX: 0.01 in
 EndY: 0.01 in
 Area 35.32 in²
 Max stitch: 11.2 mm
 Min stitch: 0.0 mm
 Max jump: 6.9 mm
 Total thread: 522.60ft
 Total bobbin: 175.78ft

Stop Sequence:

#	N#	Color	St.	Code	Name	Chart
1.	1		1,532		R38 G42 B84	
2.	3		431		R63 G85 B115	
3.	2		334		R224 G90 B160	
4.	4		494		R156 G48 B111	
5.	5		2,437		R255 G164 B178	
6.	6		637		R185 G156 B204	
7.	7		3,436		R150 G197 B235	
8.	9		364		R139 G156 B219	
9.	11		1,200		R255 G208 B80	
10.	12		1,091		R255 G180 B105	
11.	13		836		R235 G156 B97	
12.	10		2,918		R141 G217 B157	
13.	14		1,552		R255 G247 B252	
14.	15		197		R200 G213 B252	
15.	8		16,228	8	Black	Default

Production Worksheet

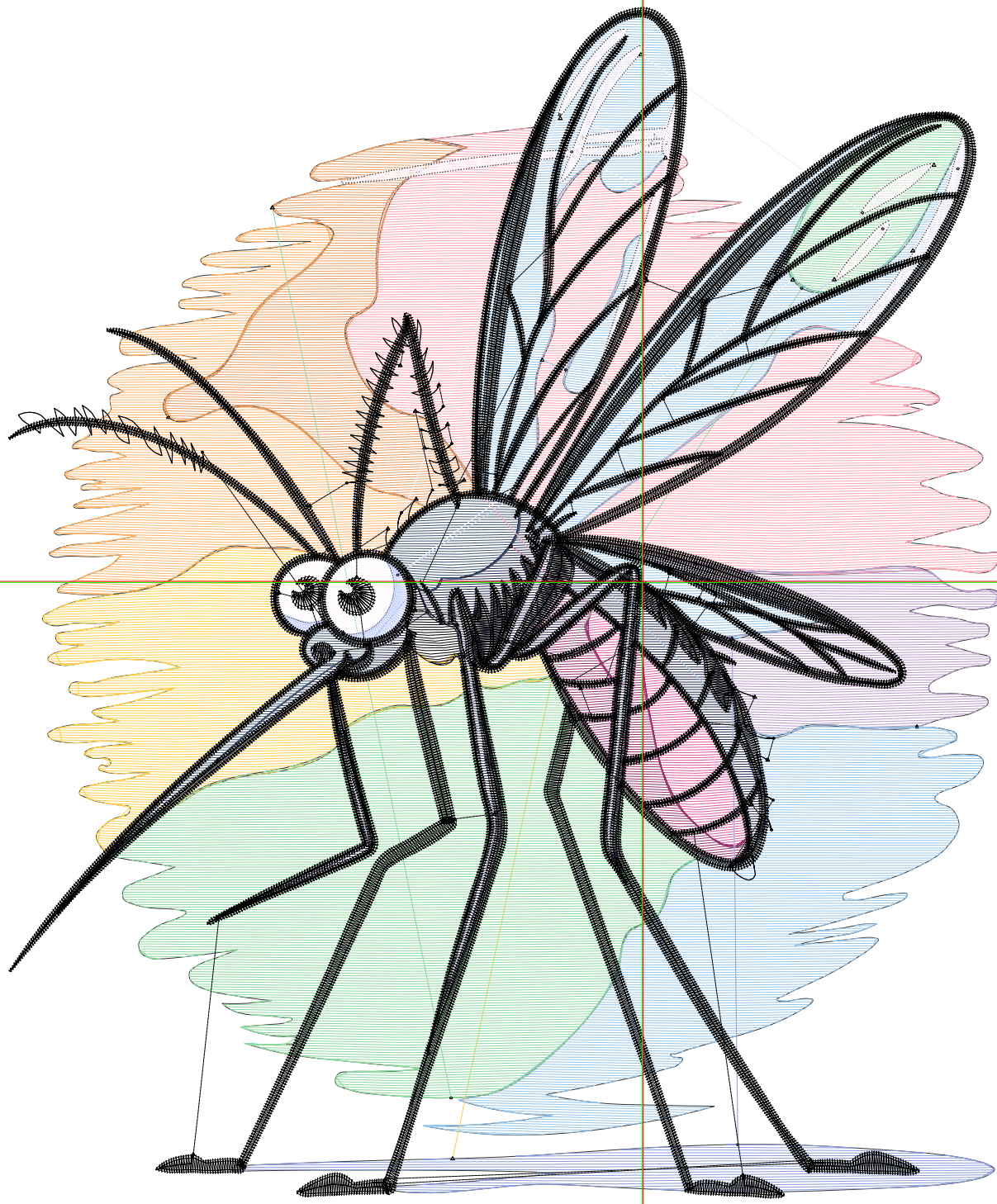
Wilcom EmbroideryStudio - Designing



Design: **7**

Title:

Stitches: 40,606
Height: 7.51 in
Width: 6.26 in
Colors: 15
Colorway: Colorway 1
Zoom: 1:1



Production Worksheet

Wilcom EmbroideryStudio - Designing



Design: **7**

Title:

Stitches: 40,606
 Height: 7.51 in
 Width: 6.26 in
 Colors: 15
 Colorway: Colorway 1
 Zoom: 1:1

Machine format: Tajima
 Color changes: 14
 Stops: 15
 Trims: 92
 Appliqués: 0
 Left: 101.5 mm
 Right: 57.5 mm
 Up: 92.2 mm
 Down: 98.7 mm
 EndX: 0.01 in
 EndY: 0.01 in
 Area 47.02 in²
 Max stitch: 7.0 mm
 Min stitch: 0.0 mm
 Max jump: 7.0 mm
 Total thread: 654.99ft
 Total bobbin: 227.33ft

Stop Sequence:

#	N#	Color	St.	Code	Name	Chart
1.	1		1,867		R38 G42 B84	
2.	3		559		R63 G85 B115	
3.	2		408		R224 G90 B160	
4.	4		591		R156 G48 B111	
5.	5		3,072		R255 G164 B178	
6.	6		815		R185 G156 B204	
7.	7		4,356		R150 G197 B235	
8.	9		446		R139 G156 B219	
9.	11		1,536		R255 G208 B80	
10.	12		1,407		R255 G180 B105	
11.	13		1,042		R235 G156 B97	
12.	10		3,735		R141 G217 B157	
13.	14		1,822		R255 G247 B252	
14.	15		229		R200 G213 B252	
15.	8		18,719	8	Black	Default