

Production Worksheet

Wilcom EmbroideryStudio - Designing



Design: **3**

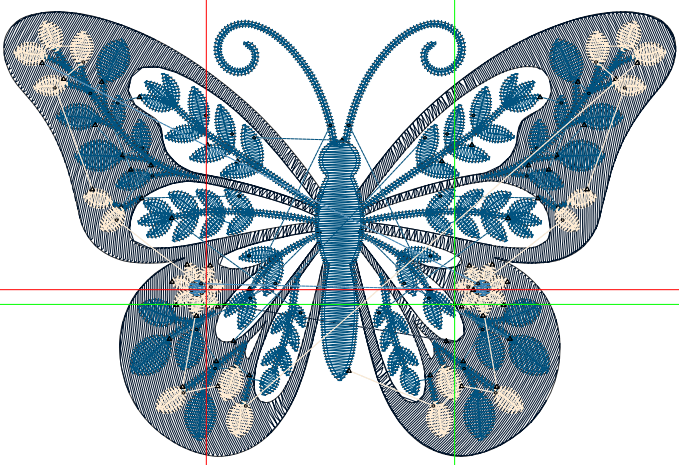
Title:

Stitches: 13,068
 Height: 2.31 in
 Width: 3.50 in
 Colors: 4
 Colorway: Colorway 1
 Zoom: 1:1

Machine format: Tajima
 Color changes: 3
 Stops: 4
 Trims: 65
 Appliqués: 0
 Left: 59.6 mm
 Right: 29.2 mm
 Up: 38.7 mm
 Down: 20.1 mm
 EndX: -1.29 in
 EndY: 0.08 in
 Area 8.10 in²
 Max stitch: 11.2 mm
 Min stitch: 0.0 mm
 Max jump: 6.7 mm
 Total thread: 172.99ft
 Total bobbin: 50.92ft

Stop Sequence:

#	N#	Color	St.	Code	Name	Chart
1.	3		5,162	R1	G20 B43	
2.	5		6,479	R1	G83 B128	
3.	1		1,352	R255	G236 B211	
4.	4		73	R52	G128 B179	



Production Worksheet

Wilcom EmbroideryStudio - Designing



Design: **4**

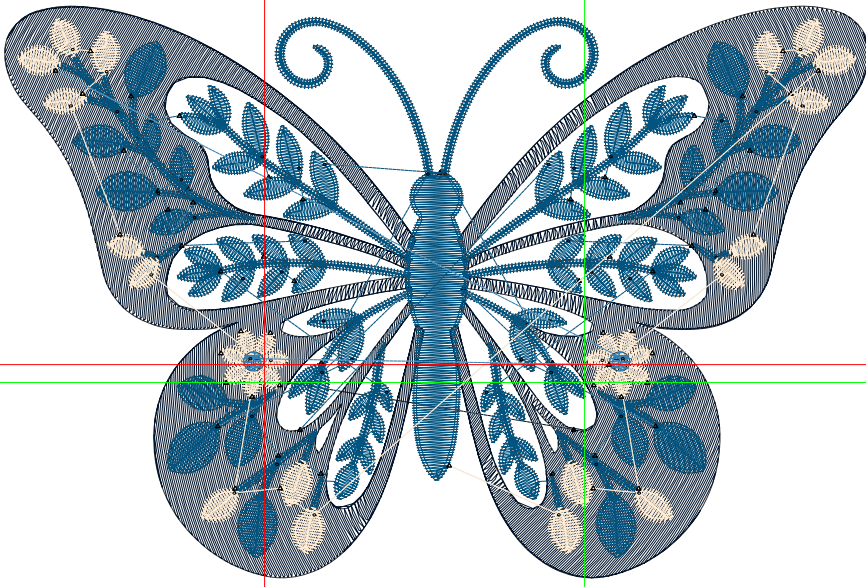
Title:

Stitches: 17,618
 Height: 2.98 in
 Width: 4.50 in
 Colors: 4
 Colorway: Colorway 1
 Zoom: 1:1

Machine format: Tajima
 Color changes: 3
 Stops: 4
 Trims: 71
 Appliqués: 0
 Left: 76.7 mm
 Right: 37.6 mm
 Up: 49.8 mm
 Down: 25.8 mm
 EndX: -1.67 in
 EndY: 0.09 in
 Area: 13.39 in²
 Max stitch: 8.5 mm
 Min stitch: 0.0 mm
 Max jump: 6.8 mm
 Total thread: 251.91ft
 Total bobbin: 80.00ft

Stop Sequence:

#	N#	Color	St.	Code	Name	Chart
1.	3		7,751	R1	G20 B43	
2.	5		8,115	R1	G83 B128	
3.	1		1,666	R255	G236 B211	
4.	4		84	R52	G128 B179	



Production Worksheet

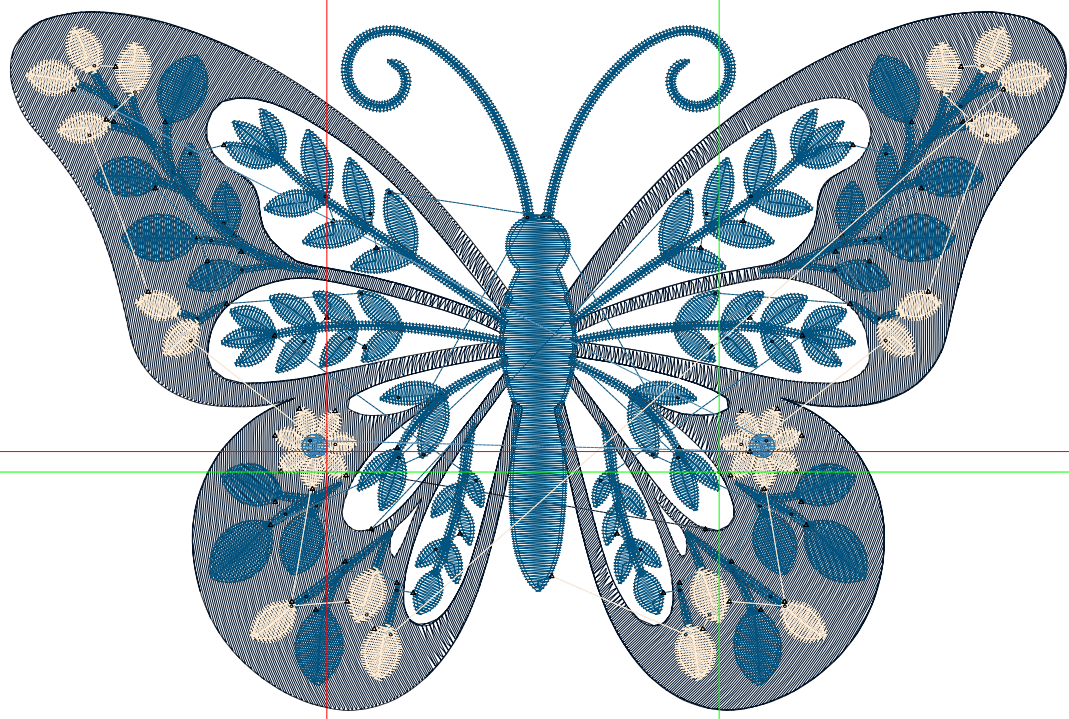
Wilcom EmbroideryStudio - Designing



Design: **5**

Title:

Stitches: 22,784
Height: 3.64 in
Width: 5.50 in
Colors: 4
Colorway: Colorway 1
Zoom: 1:1



Production Worksheet

Wilcom EmbroideryStudio - Designing



Design: **5**

Title:

Stitches: 22,784
 Height: 3.64 in
 Width: 5.50 in
 Colors: 4
 Colorway: Colorway 1
 Zoom: 1:1

Machine format: Tajima
 Color changes: 3
 Stops: 4
 Trims: 83
 Appliqués: 0
 Left: 93.7 mm
 Right: 45.9 mm
 Up: 60.9 mm
 Down: 31.5 mm
 EndX: -2.04 in
 EndY: 0.11 in
 Area 20.00 in²
 Max stitch: 10.3 mm
 Min stitch: 0.0 mm
 Max jump: 6.8 mm
 Total thread: 346.75ft
 Total bobbin: 116.11ft

Stop Sequence:

#	N#	Color	St.	Code	Name	Chart
1.	3		10,909		R1 G20 B43	
2.	5		9,808		R1 G83 B128	
3.	1		1,964		R255 G236 B211	
4.	4		101		R52 G128 B179	

Production Worksheet

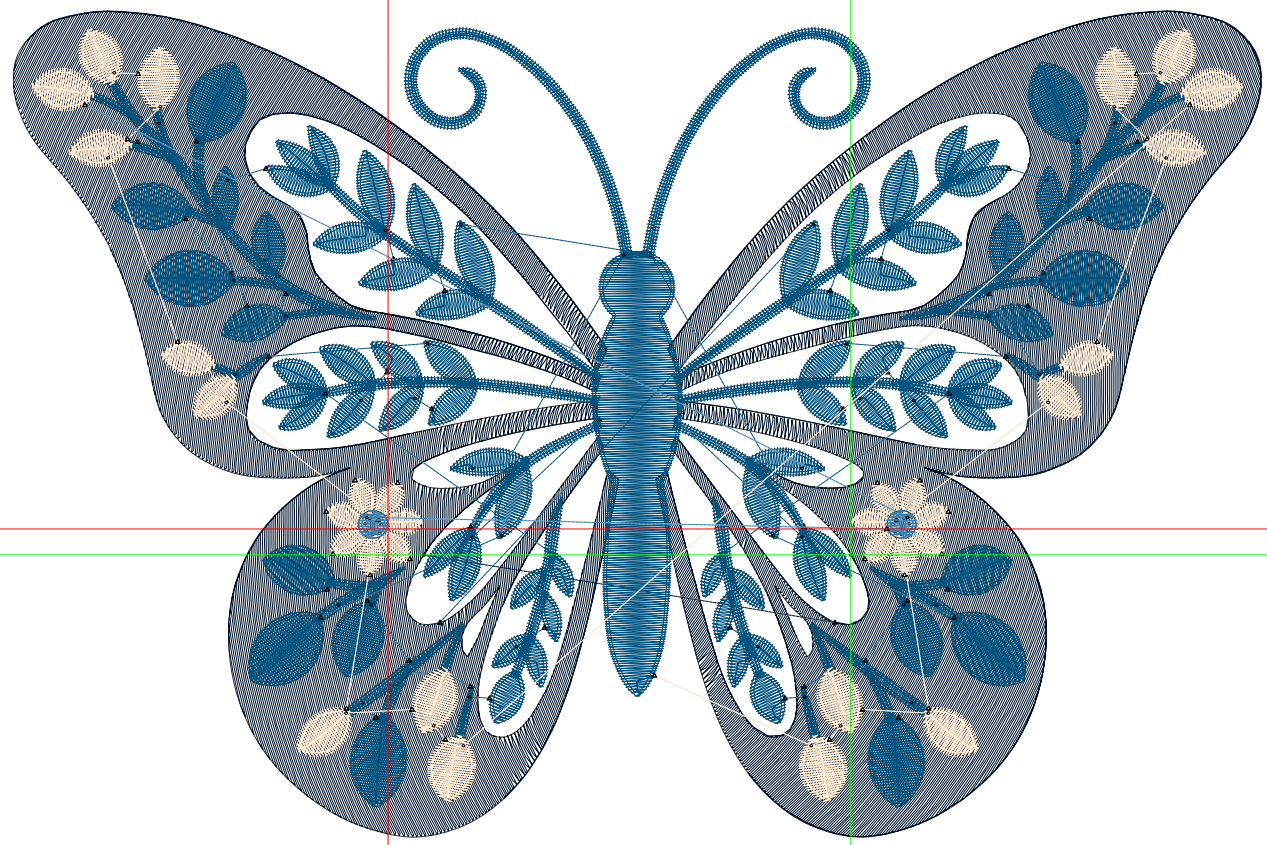
Wilcom EmbroideryStudio - Designing



Design: **6**

Title:

Stitches: 28,103
Height: 4.30 in
Width: 6.50 in
Colors: 4
Colorway: Colorway 1
Zoom: 1:1



Production Worksheet

Wilcom EmbroideryStudio - Designing



Design: **6**

Title:

Stitches: 28,103
 Height: 4.30 in
 Width: 6.50 in
 Colors: 4
 Colorway: Colorway 1
 Zoom: 1:1

Machine format: Tajima
 Color changes: 3
 Stops: 4
 Trims: 87
 Appliqués: 0
 Left: 110.8 mm
 Right: 54.3 mm
 Up: 71.9 mm
 Down: 37.3 mm
 EndX: -2.41 in
 EndY: 0.13 in
 Area 27.94 in²
 Max stitch: 12.1 mm
 Min stitch: 0.0 mm
 Max jump: 6.9 mm
 Total thread: 452.98ft
 Total bobbin: 158.38ft

Stop Sequence:

#	N#	Color	St.	Code	Name	Chart
1.	3		14,260		R1 G20 B43	
2.	5		11,443		R1 G83 B128	
3.	1		2,284		R255 G236 B211	
4.	4		114		R52 G128 B179	

Production Worksheet

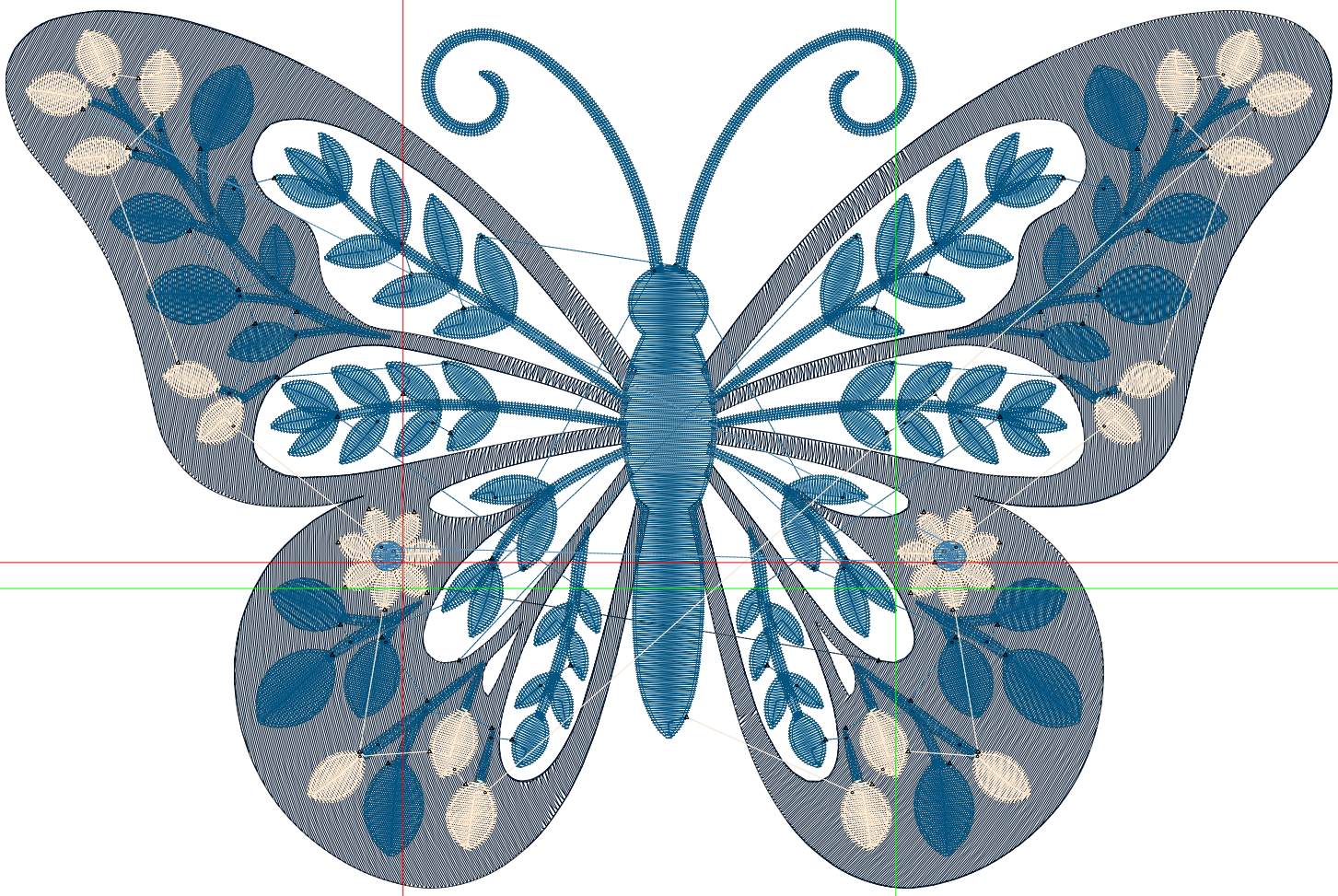
Wilcom EmbroideryStudio - Designing



Design: **7**

Title:

Stitches: 33,935
Height: 4.96 in
Width: 7.50 in
Colors: 4
Colorway: Colorway 1
Zoom: 1:1



Production Worksheet

Wilcom EmbroideryStudio - Designing



Design: **7**

Title:

Stitches: 33,935
 Height: 4.96 in
 Width: 7.50 in
 Colors: 4
 Colorway: Colorway 1
 Zoom: 1:1

Machine format: Tajima
 Color changes: 3
 Stops: 4
 Trims: 87
 Appliqués: 0
 Left: 127.8 mm
 Right: 62.6 mm
 Up: 83.0 mm
 Down: 43.1 mm
 EndX: -2.79 in
 EndY: 0.15 in
 Area 37.20 in²
 Max stitch: 12.0 mm
 Min stitch: 0.0 mm
 Max jump: 7.0 mm
 Total thread: 572.61ft
 Total bobbin: 206.60ft

Stop Sequence:

#	N#	Color	St.	Code	Name	Chart
1.	3		18,128		R1 G20 B43	
2.	5		13,134		R1 G83 B128	
3.	1		2,539		R255 G236 B211	
4.	4		132		R52 G128 B179	