

Production Worksheet

Wilcom EmbroideryStudio - Designing



Design: **3**

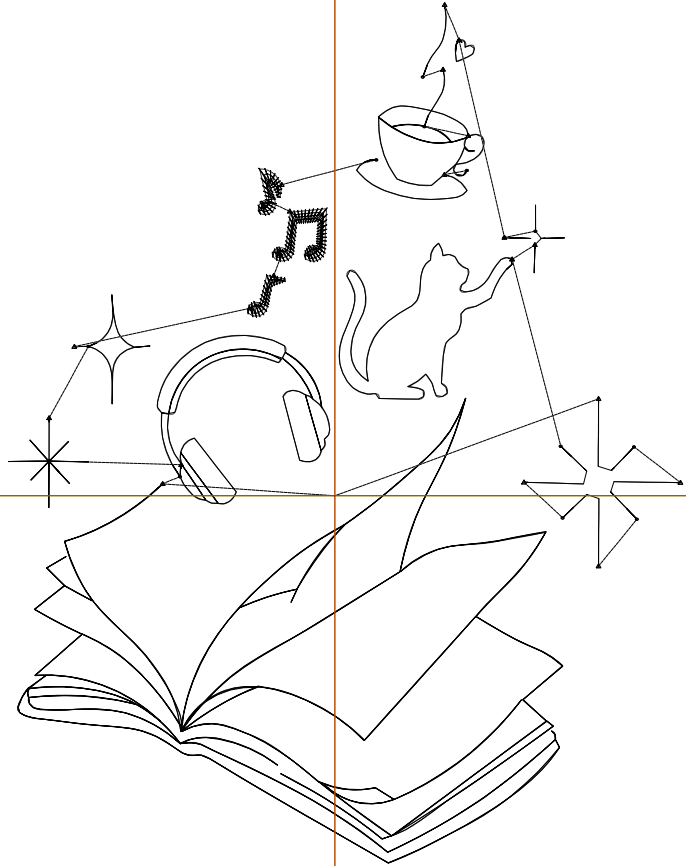
Title:

Stitches: 1,627
 Height: 4.47 in
 Width: 3.50 in
 Colors: 1
 Colorway: Colorway 1
 Zoom: 1:1

Machine format: Tajima
 Color changes: 0
 Stops: 1
 Trims: 19
 Appliqués: 0
 Left: 43.2 mm
 Right: 45.7 mm
 Up: 64.9 mm
 Down: 48.6 mm
 EndX: 0.00 in
 EndY: 0.00 in
 Area: 15.64 in²
 Max stitch: 6.5 mm
 Min stitch: 0.3 mm
 Max jump: 7.0 mm
 Total thread: 22.71ft
 Total bobbin: 6.94ft

Stop Sequence:

#	N#	Color	St.	Code	Name	Chart
1.	8	█	1,625	8	Black	Default



Production Worksheet

Wilcom EmbroideryStudio - Designing



Design: **4**

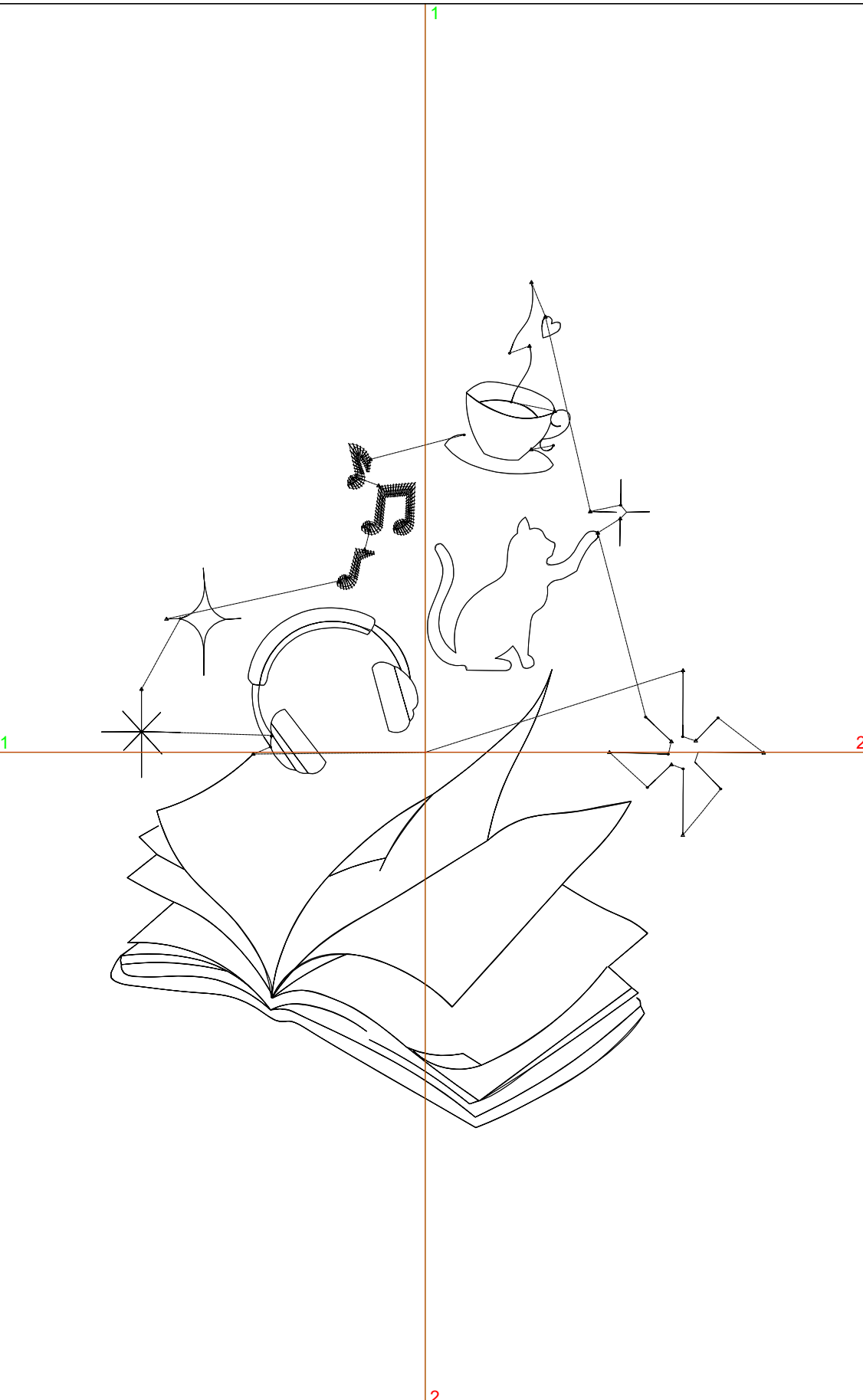
Title:

Stitches: 1,967
Height: 5.75 in
Width: 4.50 in
Colors: 1
Colorway: Colorway 1
Zoom: 1:1

Machine format: Tajima
Color changes: 0
Stops: 1
Trims: 22
Appliqués: 0
Left: 55.9 mm
Right: 58.4 mm
Up: 81.1 mm
Down: 64.8 mm
EndX: 0.00 in
EndY: 0.00 in
Area: 25.85 in²
Max stitch: 6.7 mm
Min stitch: 0.4 mm
Max jump: 6.7 mm
Total thread: 28.55ft
Total bobbin: 9.08ft

Stop Sequence:

#	N#	Color	St.	Code	Name	Chart
1.	8	█	1,965	8	Black	Default



Production Worksheet

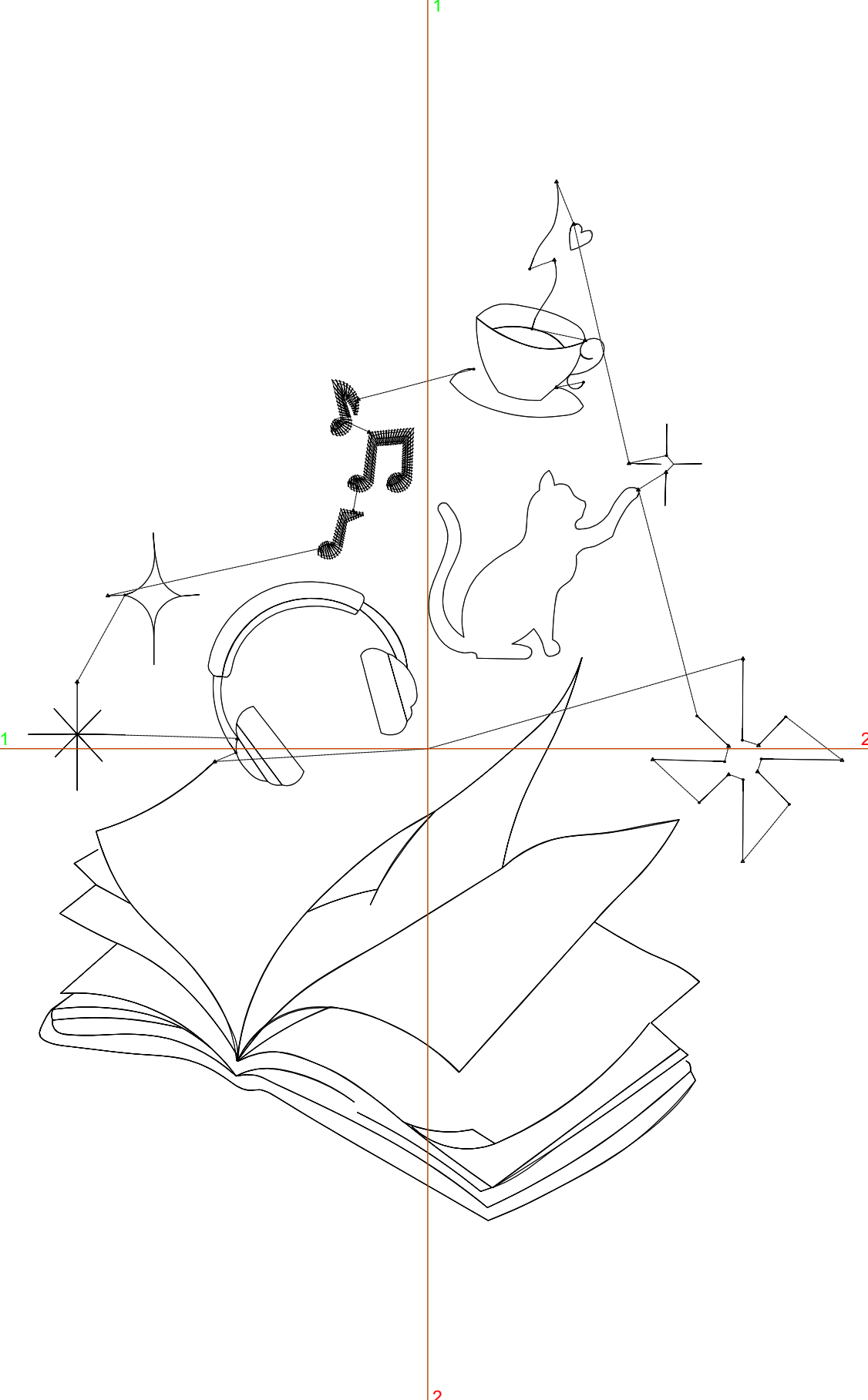
Wilcom EmbroideryStudio - Designing



Design: **5**

Title:

Stitches: 2,292
 Height: 7.02 in
 Width: 5.50 in
 Colors: 1
 Colorway: Colorway 1
 Zoom: 1:1



Machine format: Tajima
 Color changes: 0
 Stops: 1
 Trims: 23
 Appliqués: 0
 Left: 68.6 mm
 Right: 71.1 mm
 Up: 97.4 mm
 Down: 81.0 mm
 EndX: 0.00 in
 EndY: 0.00 in
 Area: 38.62 in²
 Max stitch: 6.9 mm
 Min stitch: 0.4 mm
 Max jump: 6.9 mm
 Total thread: 34.48ft
 Total bobbin: 11.33ft

Stop Sequence:

#	N#	Color	St.	Code	Name	Chart
1.	8	█	2,290	8	Black	Default

Production Worksheet

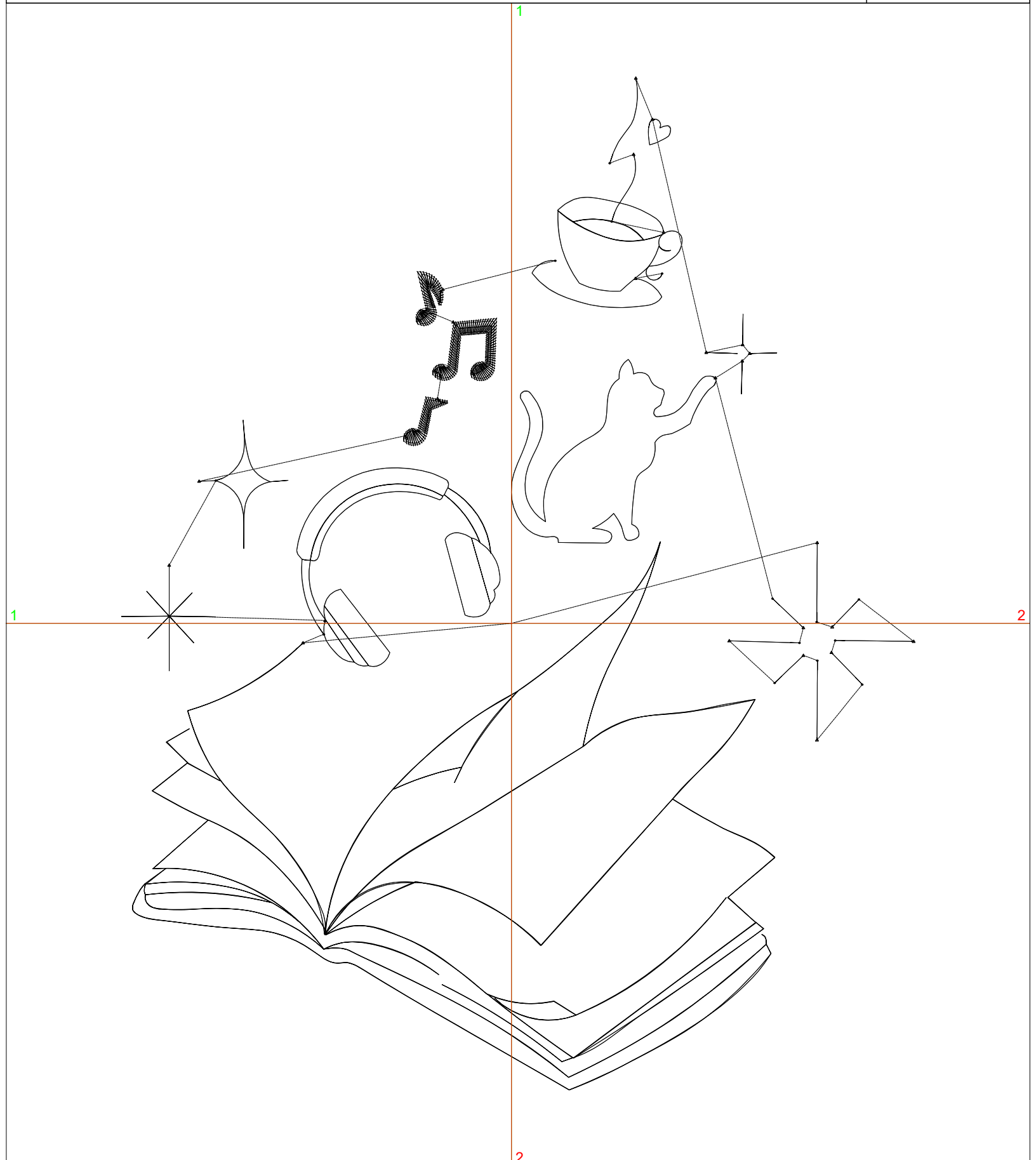
Wilcom EmbroideryStudio - Designing



Design: **6**

Title:

Stitches: 2,622
Height: 8.30 in
Width: 6.50 in
Colors: 1
Colorway: Colorway 1
Zoom: 1:1



Production Worksheet

Wilcom EmbroideryStudio - Designing



Design: **6**

Title:

Stitches: 2,622
 Height: 8.30 in
 Width: 6.50 in
 Colors: 1
 Colorway: Colorway 1
 Zoom: 1:1

Machine format: Tajima
 Color changes: 0
 Stops: 1
 Trims: 25
 Appliqués: 0
 Left: 81.3 mm
 Right: 83.8 mm
 Up: 113.6 mm
 Down: 97.2 mm
 EndX: 0.00 in
 EndY: 0.00 in
 Area 53.94 in²
 Max stitch: 6.9 mm
 Min stitch: 0.4 mm
 Max jump: 6.9 mm
 Total thread: 40.69ft
 Total bobbin: 13.72ft

Stop Sequence:

#	N#	Color	St.	Code	Name	Chart
1.	8	█	2,620	8	Black	Default

Production Worksheet

Wilcom EmbroideryStudio - Designing



Design: **7**

Title:

Stitches: 2,949
Height: 9.58 in
Width: 7.50 in
Colors: 1
Colorway: Colorway 1
Zoom: 1:1

1



1 1
1 1

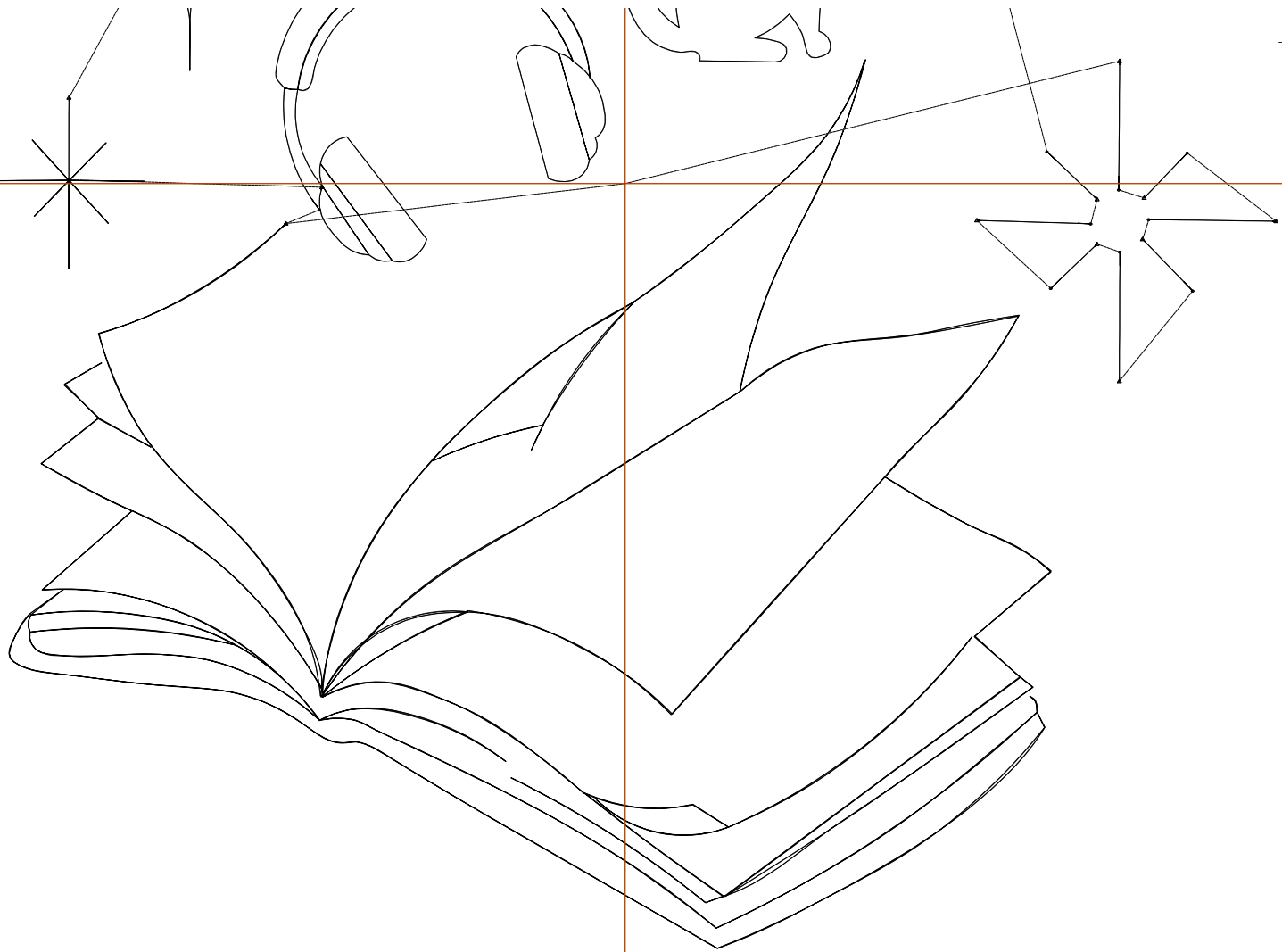
2 2
2 2

1 1
1 1

2 2
2 2

1

2



2

Production Worksheet

Wilcom EmbroideryStudio - Designing



Design: **7**

Title:

Stitches: 2,949
 Height: 9.58 in
 Width: 7.50 in
 Colors: 1
 Colorway: Colorway 1
 Zoom: 1:1

Machine format: Tajima
 Color changes: 0
 Stops: 1
 Trims: 25
 Appliqués: 0
 Left: 94.0 mm
 Right: 96.5 mm
 Up: 129.8 mm
 Down: 113.4 mm
 EndX: 0.00 in
 EndY: 0.00 in
 Area 71.82 in²
 Max stitch: 7.0 mm
 Min stitch: 0.4 mm
 Max jump: 7.0 mm
 Total thread: 47.05ft
 Total bobbin: 16.22ft

Stop Sequence:

#	N#	Color	St.	Code	Name	Chart
1.	8	█	2,947	8	Black	Default