

Production Worksheet

Wilcom EmbroideryStudio - Designing



Design: **3**

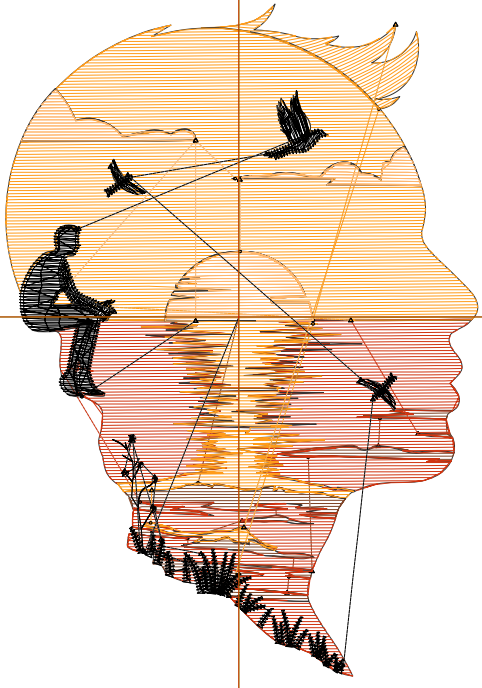
Title:

Stitches: 7,473
 Height: 3.49 in
 Width: 2.46 in
 Colors: 5
 Colorway: Colorway 1
 Zoom: 1:1

Machine format: Tajima
 Color changes: 4
 Stops: 5
 Trims: 37
 Appliqués: 0
 Left: 30.8 mm
 Right: 31.6 mm
 Up: 41.1 mm
 Down: 47.5 mm
 EndX: 0.00 in
 EndY: 0.00 in
 Area: 8.57 in²
 Max stitch: 6.9 mm
 Min stitch: 0.0 mm
 Max jump: 6.9 mm
 Total thread: 115.56ft
 Total bobbin: 38.45ft

Stop Sequence:

#	N#	Color	St.	Code	Name	Chart
1.	2		423		R128 G67 B37	
2.	3		1,788		R209 G52 B16	
3.	1		2,339		R255 G156 B27	
4.	4		748		R255 G183 B110	
5.	8		2,173	8	Black	Default



Production Worksheet

Wilcom EmbroideryStudio - Designing



Design: **4**

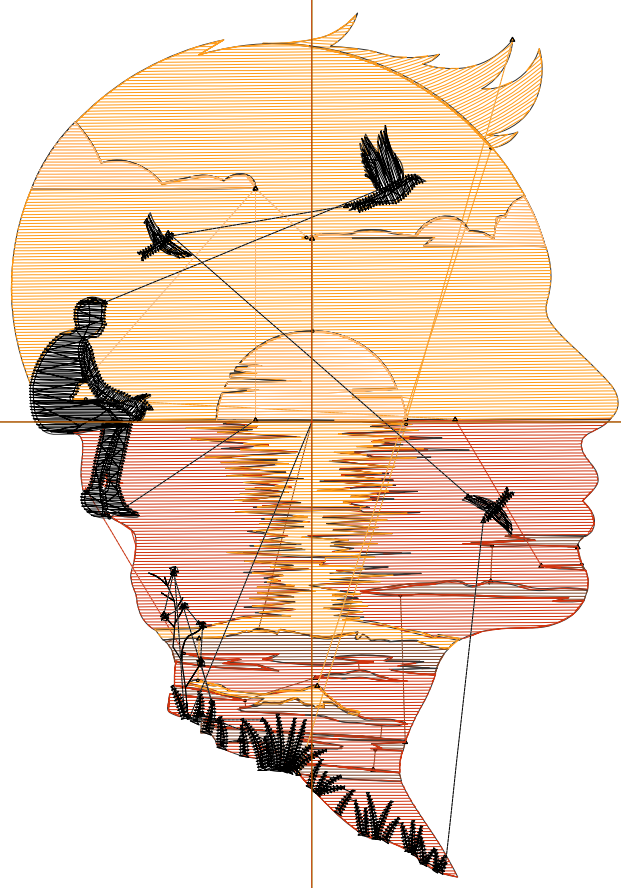
Title:

Stitches: 10,227
 Height: 4.49 in
 Width: 3.16 in
 Colors: 5
 Colorway: Colorway 1
 Zoom: 1:1

Machine format: Tajima
 Color changes: 4
 Stops: 5
 Trims: 40
 Appliqués: 0
 Left: 39.7 mm
 Right: 40.5 mm
 Up: 53.8 mm
 Down: 60.2 mm
 EndX: 0.00 in
 EndY: 0.00 in
 Area: 14.18 in²
 Max stitch: 7.0 mm
 Min stitch: 0.0 mm
 Max jump: 7.0 mm
 Total thread: 167.38ft
 Total bobbin: 58.45ft

Stop Sequence:

#	N#	Color	St.	Code	Name	Chart
1.	2		573		R128 G67 B37	
2.	3		2,469		R209 G52 B16	
3.	1		3,351		R255 G156 B27	
4.	4		1,080		R255 G183 B110	
5.	8		2,752	8	Black	Default



Production Worksheet

Wilcom EmbroideryStudio - Designing



Design: **5**

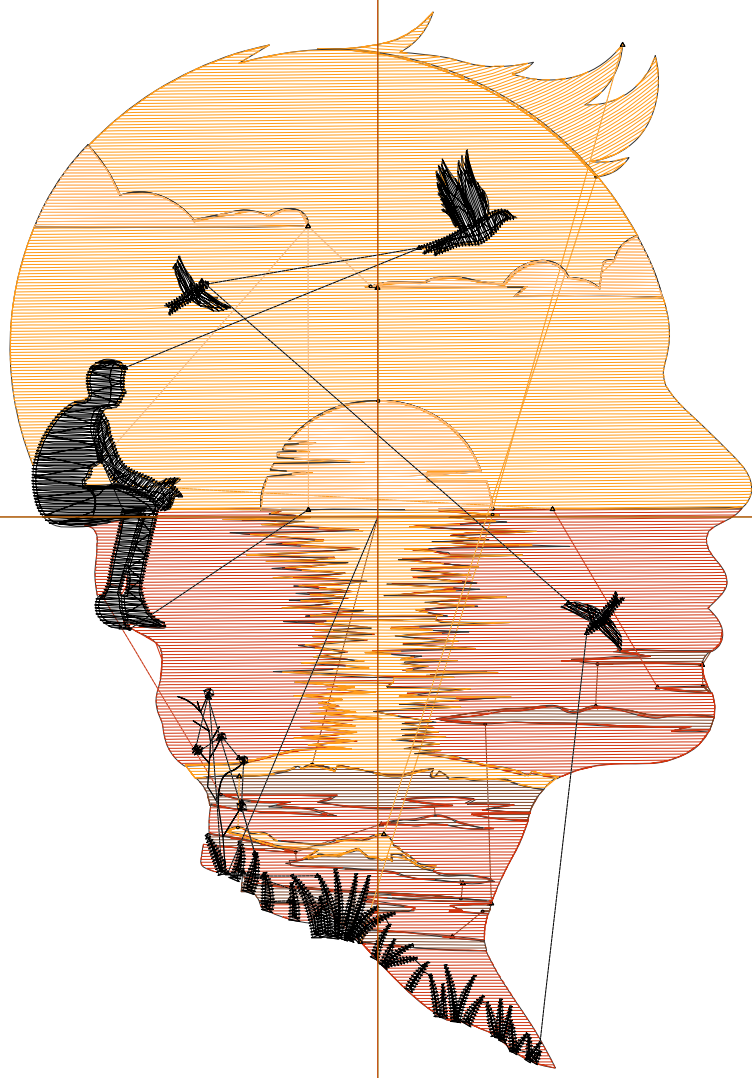
Title:

Stitches: 13,554
 Height: 5.50 in
 Width: 3.86 in
 Colors: 5
 Colorway: Colorway 1
 Zoom: 1:1

Machine format: Tajima
 Color changes: 4
 Stops: 5
 Trims: 42
 Appliqués: 0
 Left: 48.6 mm
 Right: 49.4 mm
 Up: 66.8 mm
 Down: 72.9 mm
 EndX: 0.00 in
 EndY: 0.00 in
 Area: 21.23 in²
 Max stitch: 7.0 mm
 Min stitch: 0.0 mm
 Max jump: 7.0 mm
 Total thread: 232.60ft
 Total bobbin: 84.16ft

Stop Sequence:

#	N#	Color	St.	Code	Name	Chart
1.	2		736		R128 G67 B37	
2.	3		3,199		R209 G52 B16	
3.	1		4,796		R255 G156 B27	
4.	4		1,406		R255 G183 B110	
5.	8		3,415	8	Black	Default



Production Worksheet

Wilcom EmbroideryStudio - Designing



Design: **6**

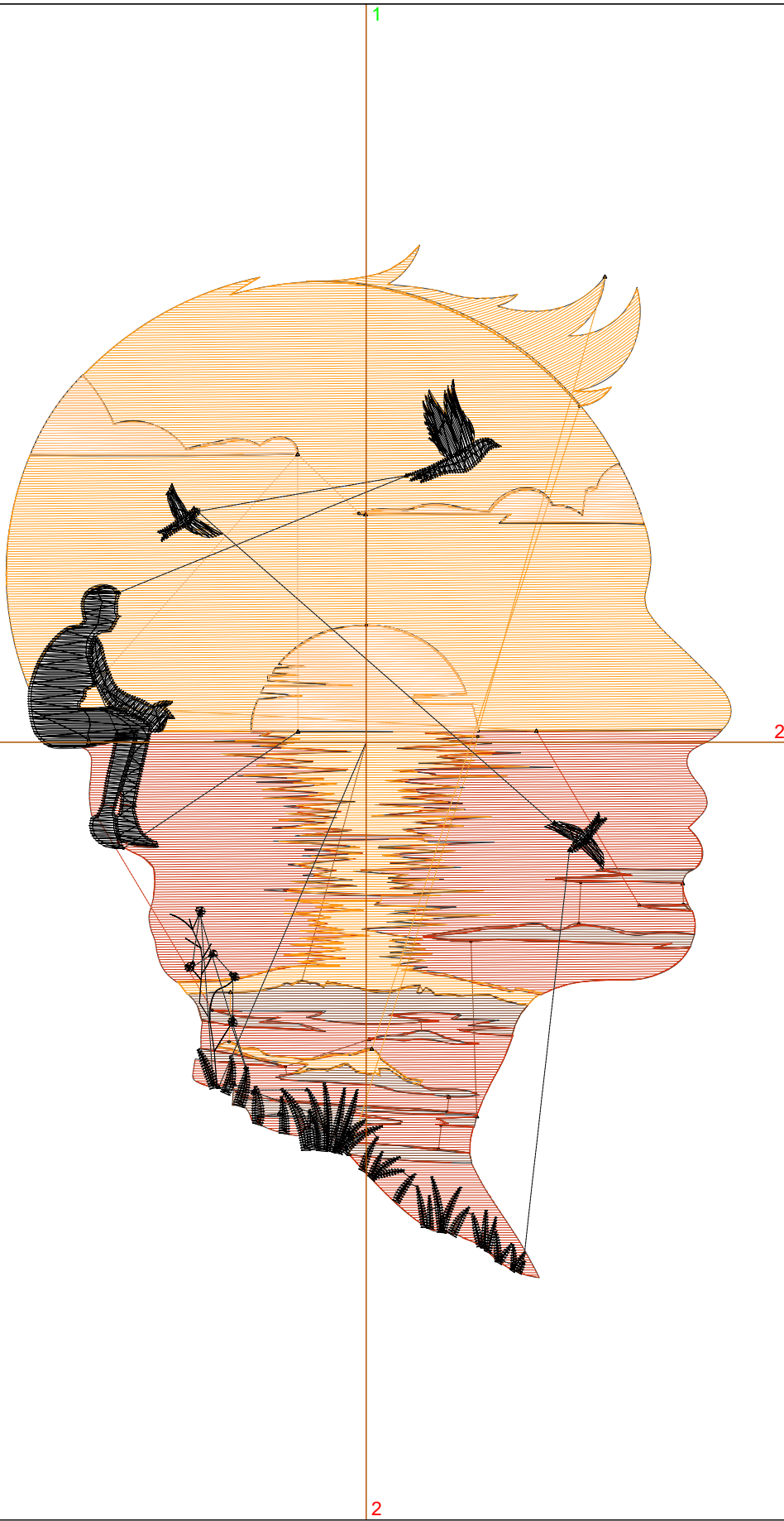
Title:

Stitches: 17,176
 Height: 6.49 in
 Width: 4.56 in
 Colors: 5
 Colorway: Colorway 1
 Zoom: 1:1

Machine format: Tajima
 Color changes: 4
 Stops: 5
 Trims: 43
 Appliqués: 0
 Left: 57.6 mm
 Right: 58.3 mm
 Up: 79.4 mm
 Down: 85.6 mm
 EndX: 0.00 in
 EndY: 0.00 in
 Area: 29.64 in²
 Max stitch: 9.8 mm
 Min stitch: 0.0 mm
 Max jump: 7.0 mm
 Total thread: 305.97ft
 Total bobbin: 113.56ft

Stop Sequence:

#	N#	Color	St.	Code	Name	Chart
1.	2		941		R128 G67 B37	
2.	3		4,112		R209 G52 B16	
3.	1		6,269		R255 G156 B27	
4.	4		1,778		R255 G183 B110	
5.	8		4,074	8	Black	Default



Production Worksheet

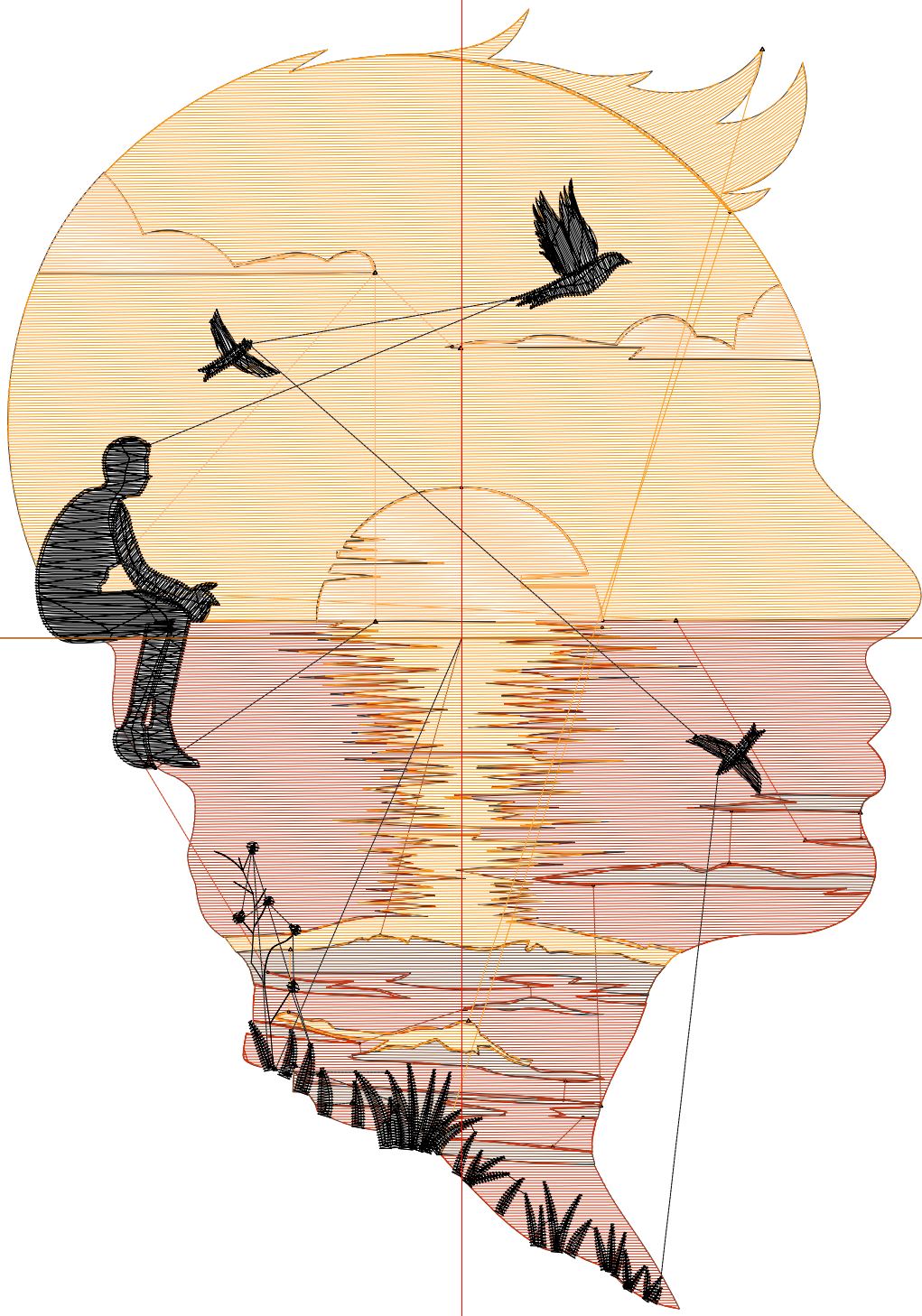
Wilcom EmbroideryStudio - Designing



Design: **7**

Title:

Stitches: 21,082
Height: 7.50 in
Width: 5.26 in
Colors: 5
Colorway: Colorway 1
Zoom: 1:1



Production Worksheet

Wilcom EmbroideryStudio - Designing



Design: **7**

Title:

Stitches: 21,082
 Height: 7.50 in
 Width: 5.26 in
 Colors: 5
 Colorway: Colorway 1
 Zoom: 1:1

Machine format: Tajima
 Color changes: 4
 Stops: 5
 Trims: 46
 Appliqués: 0
 Left: 66.5 mm
 Right: 67.3 mm
 Up: 92.2 mm
 Down: 98.3 mm
 EndX: 0.00 in
 EndY: 0.00 in
 Area 39.48 in²
 Max stitch: 7.0 mm
 Min stitch: 0.0 mm
 Max jump: 7.0 mm
 Total thread: 387.07ft
 Total bobbin: 146.43ft

Stop Sequence:

#	N#	Color	St.	Code	Name	Chart
1.	2		1,138		R128 G67 B37	
2.	3		5,215		R209 G52 B16	
3.	1		7,745		R255 G156 B27	
4.	4		2,204		R255 G183 B110	
5.	8		4,778	8	Black	Default