

# Production Worksheet

Wilcom EmbroideryStudio - Designing



Design: **3**

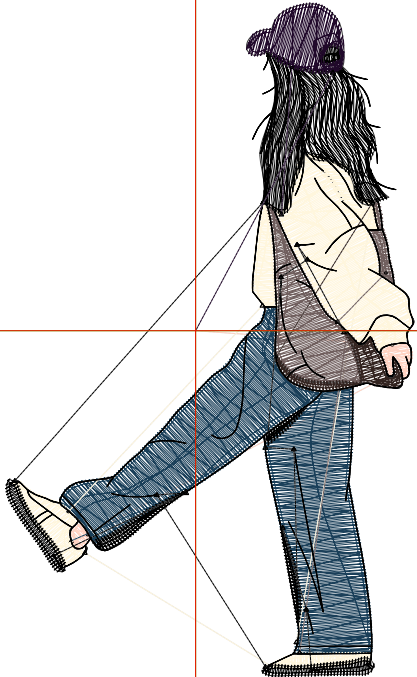
Title:

Stitches: 6,183  
 Height: 3.51 in  
 Width: 2.13 in  
 Colors: 7  
 Colorway: Colorway 1  
 Zoom: 1:1

Machine format: Tajima  
 Color changes: 6  
 Stops: 7  
 Trims: 26  
 Appliqués: 0  
 Left: 25.1 mm  
 Right: 28.9 mm  
 Up: 43.4 mm  
 Down: 45.8 mm  
 EndX: 0.00 in  
 EndY: 0.00 in  
 Area 7.47 in<sup>2</sup>  
 Max stitch: 11.6 mm  
 Min stitch: 0.2 mm  
 Max jump: 6.8 mm  
 Total thread: 97.10ft  
 Total bobbin: 32.14ft

Stop Sequence:

#	N#	Color	St.	Code	Name	Chart
1.	1		166		R255 G211 B195	
2.	8		1,553		R26 G63 B89	
3.	4		1,297		R255 G246 B221	
4.	5		562		R112 G95 B94	
5.	3		260		R51 G36 B32	
6.	28		2,049	8	Black	Default
7.	2		294		R33 G9 B43	



# Production Worksheet

Wilcom EmbroideryStudio - Designing



Design: **4**

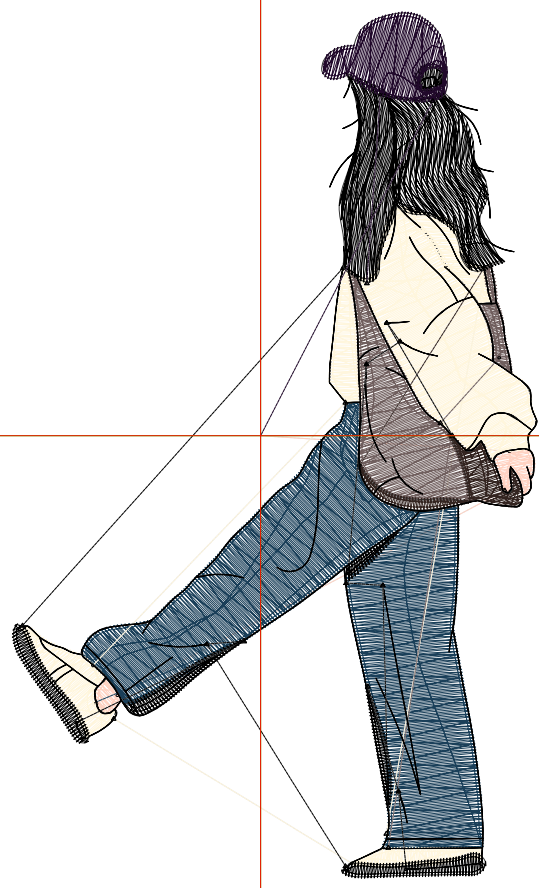
Title:

Stitches: 8,405  
Height: 4.51 in  
Width: 2.73 in  
Colors: 7  
Colorway: Colorway 1  
Zoom: 1:1

Machine format: Tajima  
Color changes: 6  
Stops: 7  
Trims: 27  
Appliqués: 0  
Left: 32.8 mm  
Right: 36.5 mm  
Up: 56.1 mm  
Down: 58.5 mm  
EndX: 0.00 in  
EndY: 0.00 in  
Area 12.33 in<sup>2</sup>  
Max stitch: 8.0 mm  
Min stitch: 0.3 mm  
Max jump: 7.0 mm  
Total thread: 140.91ft  
Total bobbin: 49.46ft

Stop Sequence:

#	N#	Color	St.	Code	Name	Chart
1.	1		212		R255 G211 B195	
2.	8		2,296		R26 G63 B89	
3.	4		1,784		R255 G246 B221	
4.	5		780		R112 G95 B94	
5.	3		333		R51 G36 B32	
6.	28		2,593	8	Black	Default
7.	2		405		R33 G9 B43	



# Production Worksheet

Wilcom EmbroideryStudio - Designing



Design: **5**

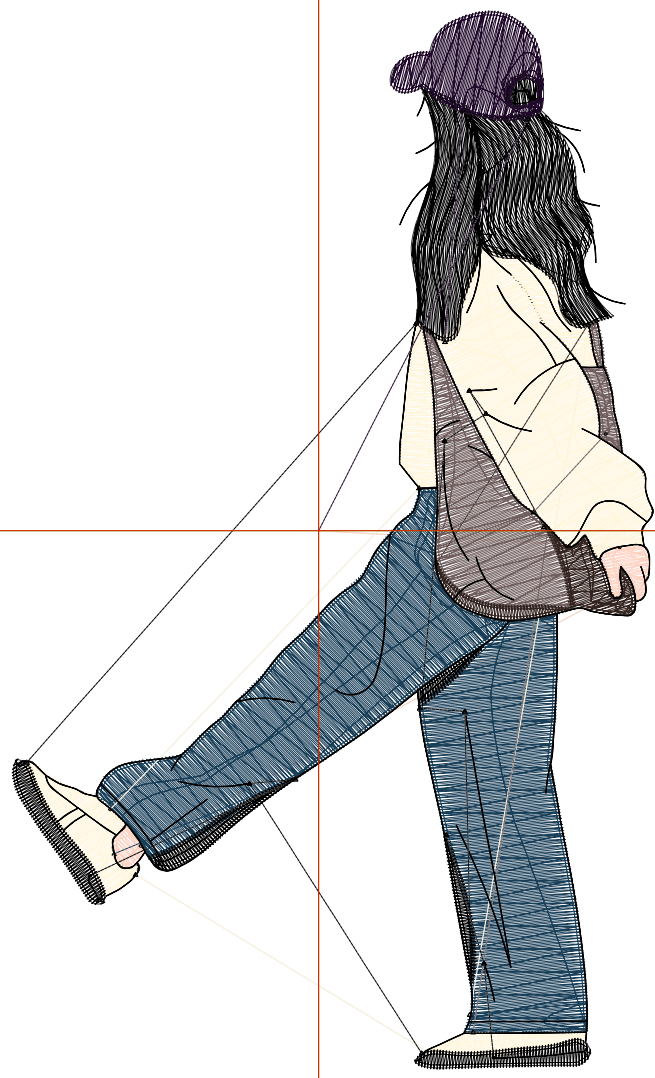
Title:

Stitches: 10,985  
Height: 5.51 in  
Width: 3.34 in  
Colors: 7  
Colorway: Colorway 1  
Zoom: 1:1

Machine format: Tajima  
Color changes: 6  
Stops: 7  
Trims: 27  
Appliqués: 0  
Left: 40.5 mm  
Right: 44.2 mm  
Up: 68.8 mm  
Down: 71.2 mm  
EndX: 0.00 in  
EndY: 0.00 in  
Area 18.40 in<sup>2</sup>  
Max stitch: 6.9 mm  
Min stitch: 0.1 mm  
Max jump: 6.9 mm  
Total thread: 193.70ft  
Total bobbin: 70.71ft

Stop Sequence:

#	N#	Color	St.	Code	Name	Chart
1.	1		265		R255 G211 B195	
2.	8		3,165		R26 G63 B89	
3.	4		2,312		R255 G246 B221	
4.	5		1,026		R112 G95 B94	
5.	3		426		R51 G36 B32	
6.	28		3,270	8	Black	Default
7.	2		519		R33 G9 B43	



# Production Worksheet

Wilcom EmbroideryStudio - Designing



Design: **6**

Title:

Stitches: 14,037  
Height: 6.51 in  
Width: 3.94 in  
Colors: 7  
Colorway: Colorway 1  
Zoom: 1:1

Machine format: Tajima  
Color changes: 6  
Stops: 7  
Trims: 27  
Appliqués: 0  
Left: 48.2 mm  
Right: 51.9 mm  
Up: 81.5 mm  
Down: 83.9 mm  
EndX: 0.00 in  
EndY: 0.00 in  
Area: 25.68 in<sup>2</sup>  
Max stitch: 7.7 mm  
Min stitch: 0.2 mm  
Max jump: 7.0 mm  
Total thread: 257.14ft  
Total bobbin: 96.44ft

Stop Sequence:

#	N#	Color	St.	Code	Name	Chart
1.	1		309		R255 G211 B195	
2.	8		4,265		R26 G63 B89	
3.	4		2,979		R255 G246 B221	
4.	5		1,306		R112 G95 B94	
5.	3		512		R51 G36 B32	
6.	28		3,999	8	Black	Default
7.	2		665		R33 G9 B43	



# Production Worksheet

Wilcom EmbroideryStudio - Designing



Design: **7**

Title:

Stitches: 17,329  
 Height: 7.51 in  
 Width: 4.55 in  
 Colors: 7  
 Colorway: Colorway 1  
 Zoom: 1:1

Machine format: Tajima  
 Color changes: 6  
 Stops: 7  
 Trims: 27  
 Appliqués: 0  
 Left: 56.0 mm  
 Right: 59.6 mm  
 Up: 94.2 mm  
 Down: 96.6 mm  
 EndX: 0.00 in  
 EndY: 0.00 in  
 Area: 34.17 in<sup>2</sup>  
 Max stitch: 7.0 mm  
 Min stitch: 0.2 mm  
 Max jump: 7.0 mm  
 Total thread: 327.18ft  
 Total bobbin: 125.14ft

Stop Sequence:

#	N#	Color	St.	Code	Name	Chart
1.	1		371		R255 G211 B195	
2.	8		5,458		R26 G63 B89	
3.	4		3,679		R255 G246 B221	
4.	5		1,596		R112 G95 B94	
5.	3		611		R51 G36 B32	
6.	28		4,788	8	Black	Default
7.	2		824		R33 G9 B43	

