

Production Worksheet

Wilcom EmbroideryStudio - Designing



Design: **3**

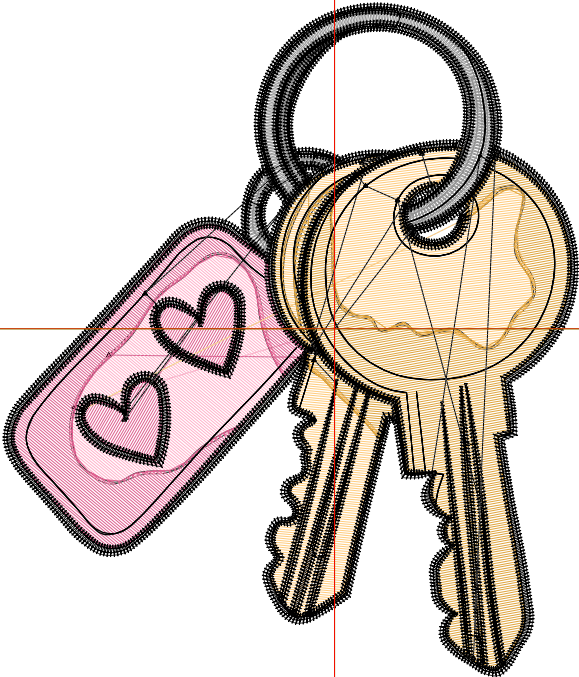
Title:

Stitches: 11,851
 Height: 3.51 in
 Width: 3.00 in
 Colors: 6
 Colorway: Colorway 1
 Zoom: 1:1

Machine format: Tajima
 Color changes: 5
 Stops: 6
 Trims: 24
 Appliqués: 0
 Left: 43.9 mm
 Right: 32.3 mm
 Up: 43.1 mm
 Down: 46.1 mm
 EndX: 0.00 in
 EndY: 0.00 in
 Area: 10.54 in²
 Max stitch: 7.4 mm
 Min stitch: 0.0 mm
 Max jump: 7.0 mm
 Total thread: 169.49ft
 Total bobbin: 53.19ft

Stop Sequence:

#	N#	Color	St.	Code	Name	Chart
1.	3		675		R255 G178 B203	
2.	4		1,154		R222 G96 B144	
3.	16		1,318	16	Sand	Default
4.	5		1,719		R224 G165 B62	
5.	2		879		R148 G148 B148	
6.	8		6,104	8	Black	Default



Production Worksheet

Wilcom EmbroideryStudio - Designing



Design: **4**

Title:

Stitches: 15,931
Height: 4.51 in
Width: 3.85 in
Colors: 6
Colorway: Colorway 1
Zoom: 1:1

Machine format: Tajima
Color changes: 5
Stops: 6
Trims: 25
Appliqués: 0
Left: 54.7 mm
Right: 43.1 mm
Up: 55.8 mm
Down: 58.8 mm
EndX: 0.00 in
EndY: 0.00 in
Area 17.38 in²
Max stitch: 9.2 mm
Min stitch: 0.0 mm
Max jump: 6.8 mm
Total thread: 244.71ft
Total bobbin: 81.90ft

Stop Sequence:

#	N#	Color	St.	Code	Name	Chart
1.	3		966		R255 G178 B203	
2.	4		1,635		R222 G96 B144	
3.	16		1,935	16	Sand	Default
4.	5		2,448		R224 G165 B62	
5.	2		1,137		R148 G148 B148	
6.	8		7,808	8	Black	Default



Production Worksheet

Wilcom EmbroideryStudio - Designing



Design: **5**

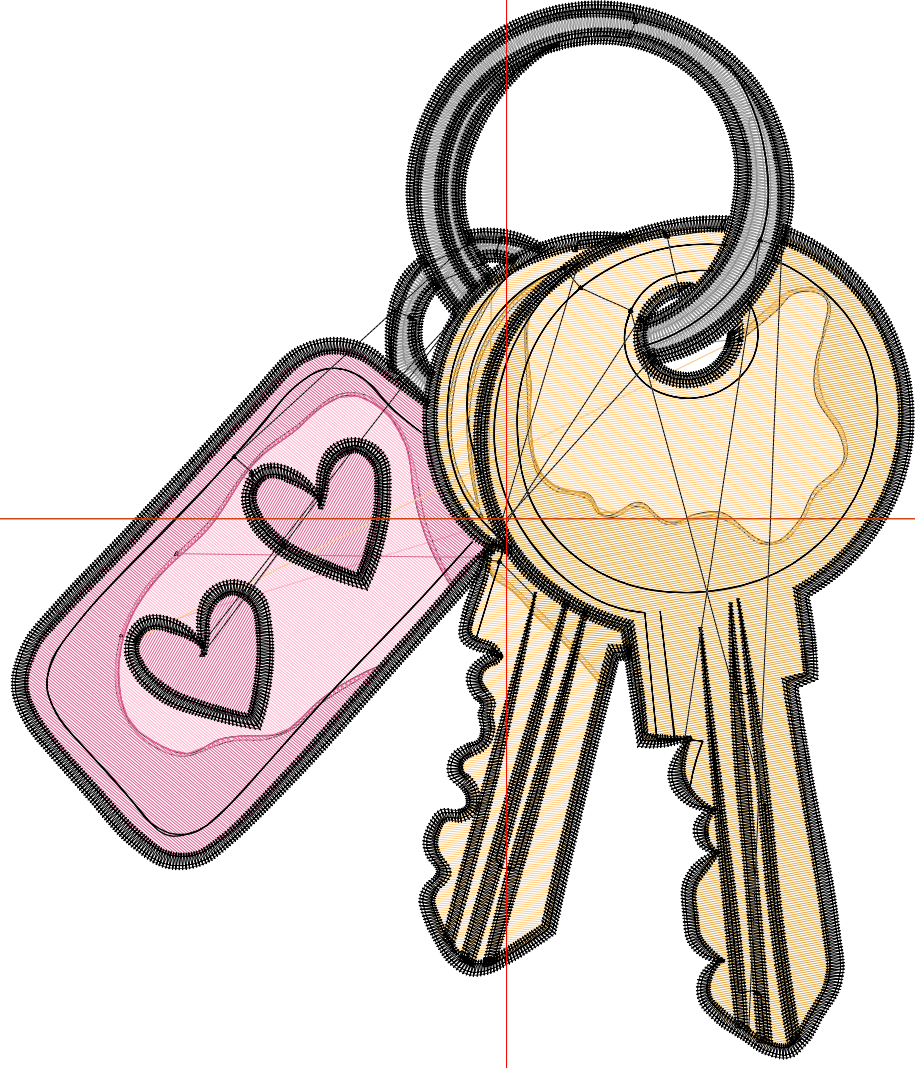
Title:

Stitches: 20,425
Height: 5.51 in
Width: 4.71 in
Colors: 6
Colorway: Colorway 1
Zoom: 1:1

Machine format: Tajima
Color changes: 5
Stops: 6
Trims: 29
Appliqués: 0
Left: 65.6 mm
Right: 54.0 mm
Up: 68.5 mm
Down: 71.5 mm
EndX: 0.00 in
EndY: 0.00 in
Area: 25.94 in²
Max stitch: 11.4 mm
Min stitch: 0.0 mm
Max jump: 7.0 mm
Total thread: 334.17ft
Total bobbin: 117.44ft

Stop Sequence:

#	N#	Color	St.	Code	Name	Chart
1.	3		1,306		R255 G178 B203	
2.	4		2,194		R222 G96 B144	
3.	16		2,655	16	Sand	Default
4.	5		3,343		R224 G165 B62	
5.	2		1,405		R148 G148 B148	
6.	8		9,520	8	Black	Default



Production Worksheet

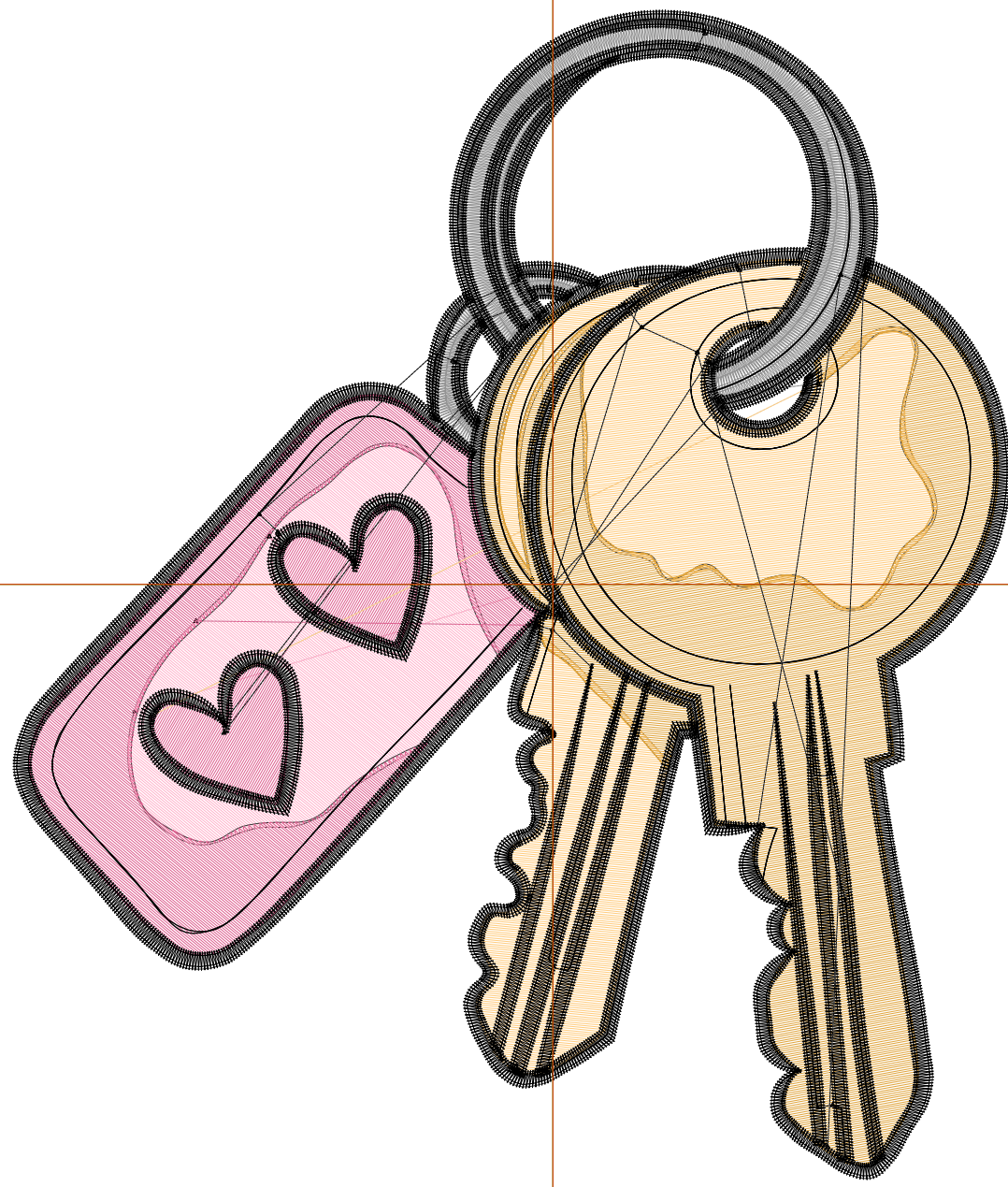
Wilcom EmbroideryStudio - Designing



Design: **6**

Title:

Stitches: 25,461
Height: 6.51 in
Width: 5.56 in
Colors: 6
Colorway: Colorway 1
Zoom: 1:1



Production Worksheet

Wilcom EmbroideryStudio - Designing



Design: **6**

Title:

Stitches: 25,461
 Height: 6.51 in
 Width: 5.56 in
 Colors: 6
 Colorway: Colorway 1
 Zoom: 1:1

Machine format: Tajima
 Color changes: 5
 Stops: 6
 Trims: 32
 Appliqués: 0
 Left: 76.4 mm
 Right: 64.8 mm
 Up: 81.2 mm
 Down: 84.2 mm
 EndX: 0.00 in
 EndY: 0.00 in
 Area 36.20 in²
 Max stitch: 6.8 mm
 Min stitch: 0.0 mm
 Max jump: 6.9 mm
 Total thread: 439.69ft
 Total bobbin: 160.39ft

Stop Sequence:

#	N#	Color	St.	Code	Name	Chart
1.	3		1,677		R255 G178 B203	
2.	4		2,808		R222 G96 B144	
3.	16		3,502	16	Sand	Default
4.	5		4,497		R224 G165 B62	
5.	2		1,694		R148 G148 B148	
6.	8		11,281	8	Black	Default

Production Worksheet

Wilcom EmbroideryStudio - Designing



Design: **7**

Title:

Stitches: 30,772
Height: 7.51 in
Width: 6.41 in
Colors: 6
Colorway: Colorway 1
Zoom: 1:1



Production Worksheet

Wilcom EmbroideryStudio - Designing



Design: **7**

Title:

Stitches: 30,772
 Height: 7.51 in
 Width: 6.41 in
 Colors: 6
 Colorway: Colorway 1
 Zoom: 1:1

Machine format: Tajima
 Color changes: 5
 Stops: 6
 Trims: 33
 Appliqués: 0
 Left: 87.2 mm
 Right: 75.6 mm
 Up: 93.9 mm
 Down: 96.9 mm
 EndX: 0.00 in
 EndY: 0.00 in
 Area 48.17 in²
 Max stitch: 7.0 mm
 Min stitch: 0.0 mm
 Max jump: 7.0 mm
 Total thread: 557.45ft
 Total bobbin: 209.52ft

Stop Sequence:

#	N#	Color	St.	Code	Name	Chart
1.	3		2,147		R255 G178 B203	
2.	4		3,566		R222 G96 B144	
3.	16		4,421	16	Sand	Default
4.	5		5,512		R224 G165 B62	
5.	2		1,977		R148 G148 B148	
6.	8		13,147	8	Black	Default