

# Production Worksheet

Wilcom EmbroideryStudio - Designing

Stitches: 13,763  
 Height: 3.51 in  
 Width: 1.55 in  
 Colors: 11  
 Colorway: Colorway 1  
 Zoom: 1:1



Design: **3**

Title:

Machine format: Tajima  
 Color changes: 11  
 Stops: 12  
 Trims: 86  
 Appliqués: 0  
 Left: 20.7 mm  
 Right: 18.7 mm  
 Up: 44.9 mm  
 Down: 44.1 mm  
 EndX: 0.00 in  
 EndY: 0.00 in  
 Area: 5.44 in<sup>2</sup>  
 Max stitch: 10.1 mm  
 Min stitch: 0.0 mm  
 Max jump: 7.0 mm  
 Total thread: 165.52ft  
 Total bobbin: 42.24ft

Stop Sequence:

#	N#	Color	St.	Code	Name	Chart
1.	7		1,811		R41 G74 B3	
2.	1		917		R155 G173 B38	
3.	9		786		R255 G165 B189	
4.	6		1,295		R166 G50 B73	
5.	8		492	8	Black	Default
6.	5		1,306		R242 G191 B160	
7.	10		659		R255 G243 B223	
8.	2		214		R166 G166 B166	
9.	18		350	18	Grey	Default
10.	3		1,923		R204 G136 B99	
11.	4		977		R112 G56 B21	
12.	8		3,031	8	Black	Default



# Production Worksheet

Wilcom EmbroideryStudio - Designing



Design: **4**

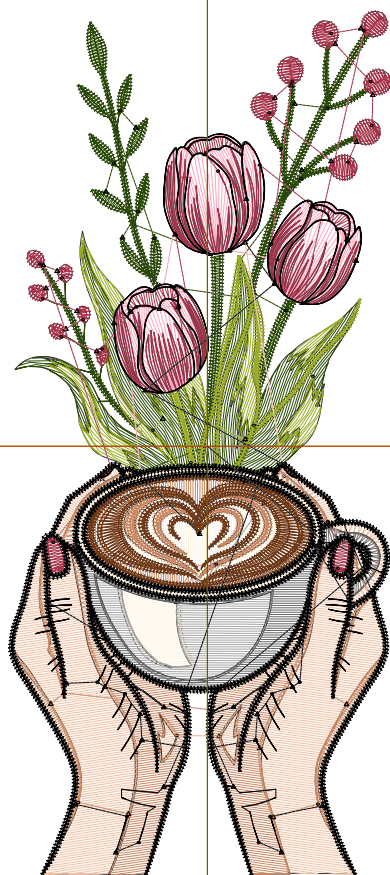
Title:

Stitches: 17,891  
 Height: 4.50 in  
 Width: 1.99 in  
 Colors: 11  
 Colorway: Colorway 1  
 Zoom: 1:1

Machine format: Tajima  
 Color changes: 11  
 Stops: 12  
 Trims: 95  
 Appliqués: 0  
 Left: 26.3 mm  
 Right: 24.3 mm  
 Up: 57.6 mm  
 Down: 56.8 mm  
 EndX: 0.00 in  
 EndY: 0.00 in  
 Area: 8.98 in<sup>2</sup>  
 Max stitch: 8.5 mm  
 Min stitch: 0.0 mm  
 Max jump: 6.7 mm  
 Total thread: 226.51ft  
 Total bobbin: 62.33ft

Stop Sequence:

#	N#	Color	St.	Code	Name	Chart
1.	7		2,357		R41 G74 B3	
2.	1		1,202		R155 G173 B38	
3.	9		1,070		R255 G165 B189	
4.	6		1,544		R166 G50 B73	
5.	8		580	8	Black	Default
6.	5		1,835		R242 G191 B160	
7.	10		886		R255 G243 B223	
8.	2		294		R166 G166 B166	
9.	18		476	18	Grey	Default
10.	3		2,629		R204 G136 B99	
11.	4		1,241		R112 G56 B21	
12.	8		3,775	8	Black	Default



# Production Worksheet

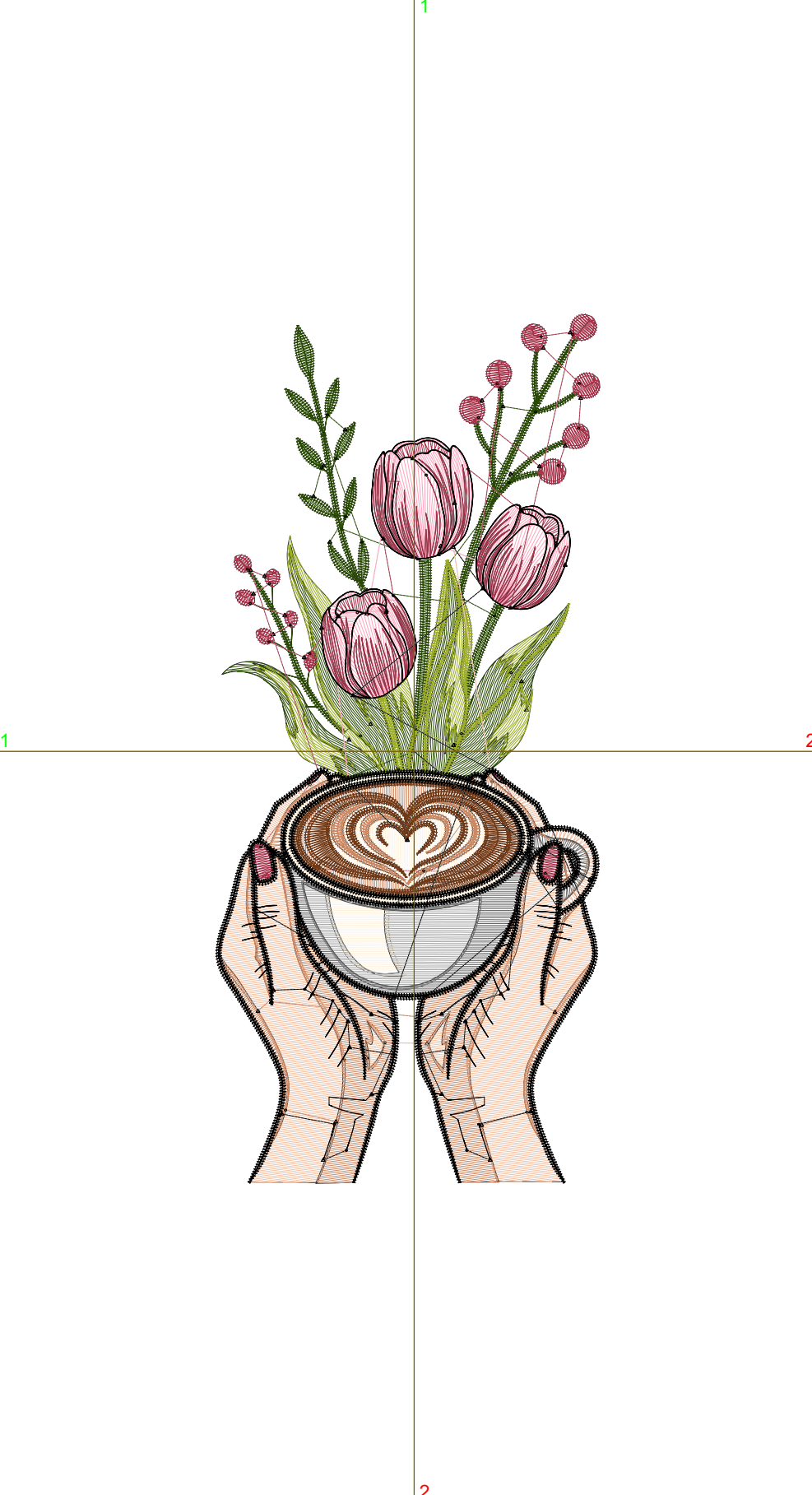
Wilcom EmbroideryStudio - Designing



Design: **5**

Title:

Stitches: 22,135  
 Height: 5.50 in  
 Width: 2.43 in  
 Colors: 11  
 Colorway: Colorway 1  
 Zoom: 1:1



Machine format: Tajima  
 Color changes: 11  
 Stops: 12  
 Trims: 100  
 Appliqués: 0  
 Left: 31.9 mm  
 Right: 29.9 mm  
 Up: 70.3 mm  
 Down: 69.4 mm  
 EndX: 0.00 in  
 EndY: 0.00 in  
 Area: 13.39 in<sup>2</sup>  
 Max stitch: 10.3 mm  
 Min stitch: 0.0 mm  
 Max jump: 6.8 mm  
 Total thread: 293.62ft  
 Total bobbin: 85.60ft

Stop Sequence:

#	N#	Color	St.	Code	Name	Chart
1.	7		2,894		R41 G74 B3	
2.	1		1,505		R155 G173 B38	
3.	9		1,422		R255 G165 B189	
4.	6		1,729		R166 G50 B73	
5.	8		660	8	Black	Default
6.	5		2,420		R242 G191 B160	
7.	10		1,137		R255 G243 B223	
8.	2		404		R166 G166 B166	
9.	18		623	18	Grey	Default
10.	3		3,323		R204 G136 B99	
11.	4		1,496		R112 G56 B21	
12.	8		4,520	8	Black	Default

# Production Worksheet

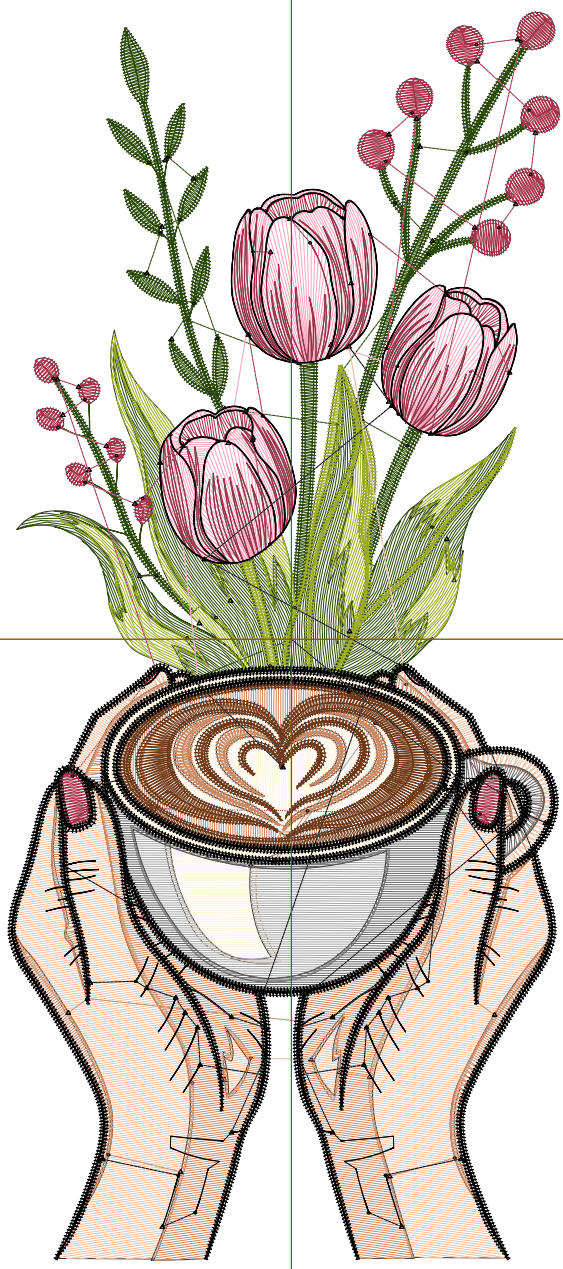
Wilcom EmbroideryStudio - Designing



Design: **6**

Title:

Stitches: 26,696  
Height: 6.50 in  
Width: 2.88 in  
Colors: 11  
Colorway: Colorway 1  
Zoom: 1:1



Machine format: Tajima  
Color changes: 11  
Stops: 12  
Trims: 108  
Appliqués: 0  
Left: 37.5 mm  
Right: 35.5 mm  
Up: 83.0 mm  
Down: 82.2 mm  
EndX: 0.00 in  
EndY: 0.00 in  
Area: 18.70 in<sup>2</sup>  
Max stitch: 12.1 mm  
Min stitch: 0.0 mm  
Max jump: 6.9 mm  
Total thread: 369.39ft  
Total bobbin: 112.76ft

Stop Sequence:

#	N#	Color	St.	Code	Name	Chart
1.	7		3,551		R41 G74 B3	
2.	1		1,805		R155 G173 B38	
3.	9		1,801		R255 G165 B189	
4.	6		2,003		R166 G50 B73	
5.	8		730	8	Black	Default
6.	5		3,028		R242 G191 B160	
7.	10		1,406		R255 G243 B223	
8.	2		511		R166 G166 B166	
9.	18		763	18	Grey	Default
10.	3		4,056		R204 G136 B99	
11.	4		1,764		R112 G56 B21	
12.	8		5,276	8	Black	Default

# Production Worksheet

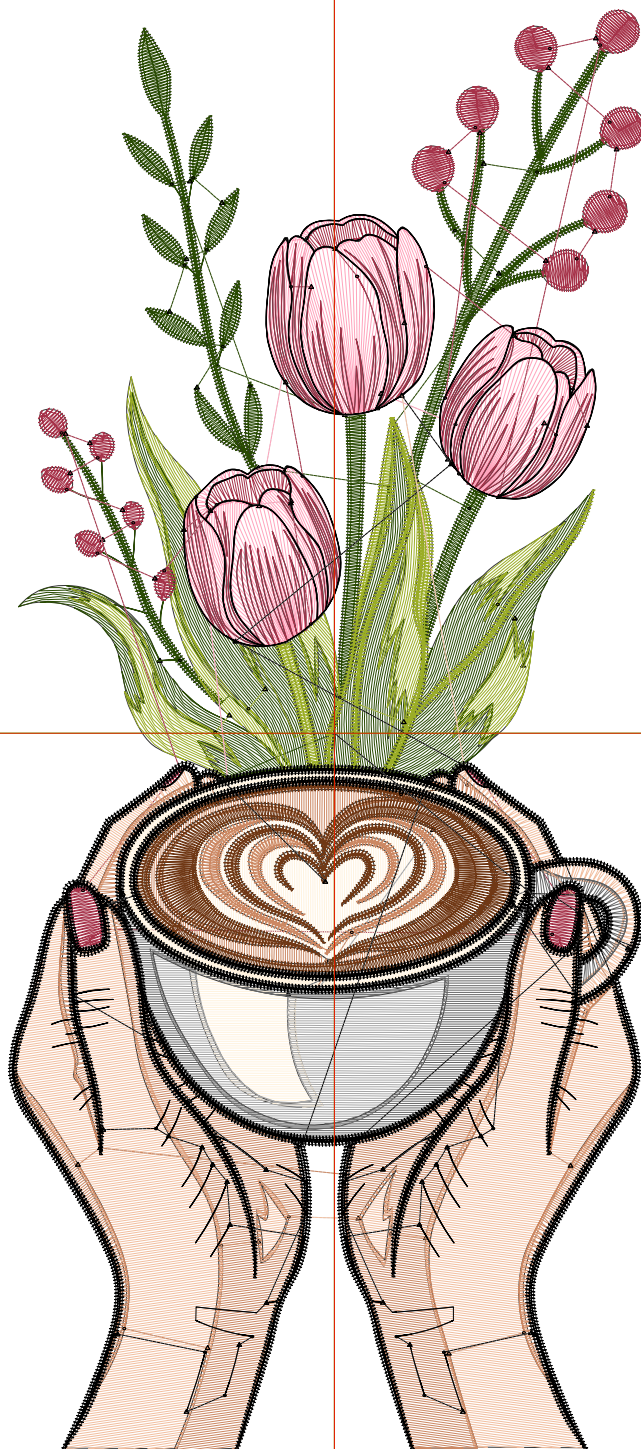
Wilcom EmbroideryStudio - Designing



Design: **7**

Title:

Stitches: 31,395  
 Height: 7.50 in  
 Width: 3.32 in  
 Colors: 11  
 Colorway: Colorway 1  
 Zoom: 1:1



Machine format: Tajima  
 Color changes: 11  
 Stops: 12  
 Trims: 113  
 Appliqués: 0  
 Left: 43.1 mm  
 Right: 41.1 mm  
 Up: 95.7 mm  
 Down: 94.8 mm  
 EndX: 0.00 in  
 EndY: 0.00 in  
 Area: 24.88 in<sup>2</sup>  
 Max stitch: 7.5 mm  
 Min stitch: 0.0 mm  
 Max jump: 6.9 mm  
 Total thread: 452.43ft  
 Total bobbin: 143.70ft

Stop Sequence:

#	N#	Color	St.	Code	Name	Chart
1.	7		4,204		R41 G74 B3	
2.	1		2,141		R155 G173 B38	
3.	9		2,151		R255 G165 B189	
4.	6		2,237		R166 G50 B73	
5.	8		788	8	Black	Default
6.	5		3,778		R242 G191 B160	
7.	10		1,698		R255 G243 B223	
8.	2		614		R166 G166 B166	
9.	18		911	18	Grey	Default
10.	3		4,835		R204 G136 B99	
11.	4		2,025		R112 G56 B21	
12.	8		6,011	8	Black	Default