

Production Worksheet

Wilcom EmbroideryStudio - Designing



Design: **3**

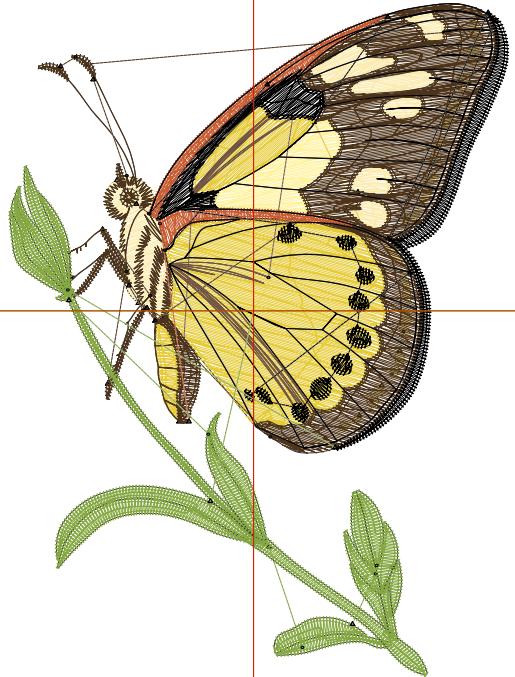
Title:

Stitches: 10,968
 Height: 3.51 in
 Width: 2.60 in
 Colors: 9
 Colorway: Colorway 1
 Zoom: 1:1

Machine format: Tajima
 Color changes: 8
 Stops: 9
 Trims: 49
 Appliqués: 0
 Left: 32.4 mm
 Right: 33.8 mm
 Up: 40.7 mm
 Down: 48.4 mm
 EndX: 0.00 in
 EndY: 0.00 in
 Area 9.13 in²
 Max stitch: 11.8 mm
 Min stitch: 0.0 mm
 Max jump: 6.9 mm
 Total thread: 165.95ft
 Total bobbin: 53.94ft

Stop Sequence:

#	N#	Color	St.	Code	Name	Chart
1.	9		796		R252 G235 B174	
2.	6		258		R255 G242 B157	
3.	2		1,565		R230 G203 B54	
4.	3		194		R120 G87 B70	
5.	4		608		R227 G210 B127	
6.	5		2,878		R77 G51 B26	
7.	7		811		R201 G92 B49	
8.	8		1,530	8	Black	Default
9.	1		2,326		R133 G168 B67	



Production Worksheet

Wilcom EmbroideryStudio - Designing



Design: **4**

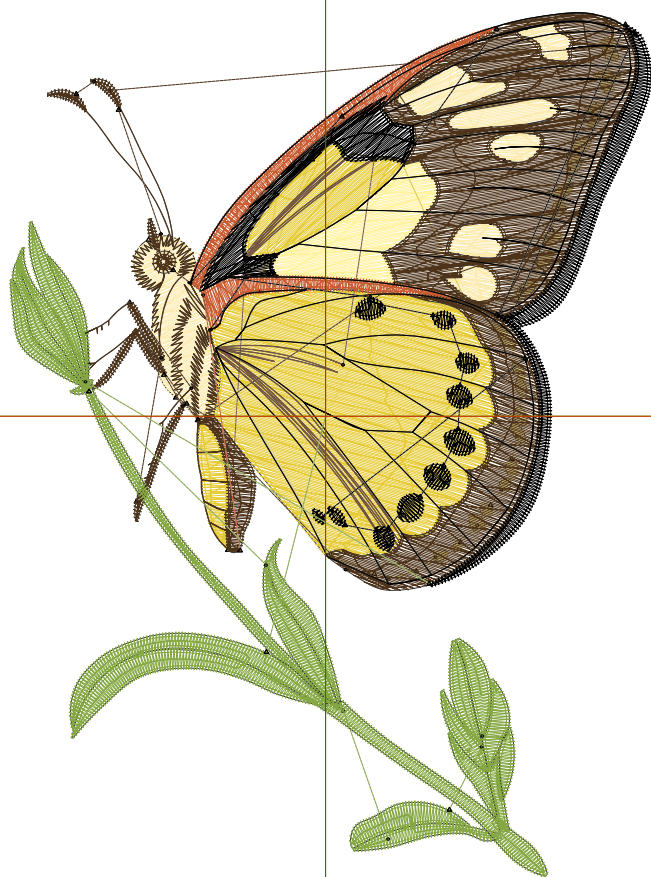
Title:

Stitches: 14,679
 Height: 4.50 in
 Width: 3.34 in
 Colors: 9
 Colorway: Colorway 1
 Zoom: 1:1

Machine format: Tajima
 Color changes: 8
 Stops: 9
 Trims: 52
 Appliqués: 0
 Left: 41.8 mm
 Right: 43.2 mm
 Up: 53.4 mm
 Down: 61.0 mm
 EndX: 0.00 in
 EndY: 0.00 in
 Area: 15.06 in²
 Max stitch: 7.0 mm
 Min stitch: 0.1 mm
 Max jump: 7.0 mm
 Total thread: 239.12ft
 Total bobbin: 82.87ft

Stop Sequence:

#	N#	Color	St.	Code	Name	Chart
1.	9		1,074		R252 G235 B174	
2.	6		388		R255 G242 B157	
3.	2		2,354		R230 G203 B54	
4.	3		235		R120 G87 B70	
5.	4		745		R227 G210 B127	
6.	5		3,882		R77 G51 B26	
7.	7		1,075		R201 G92 B49	
8.	8		1,953	8	Black	Default
9.	1		2,971		R133 G168 B67	



Production Worksheet

Wilcom EmbroideryStudio - Designing



Design: **5**

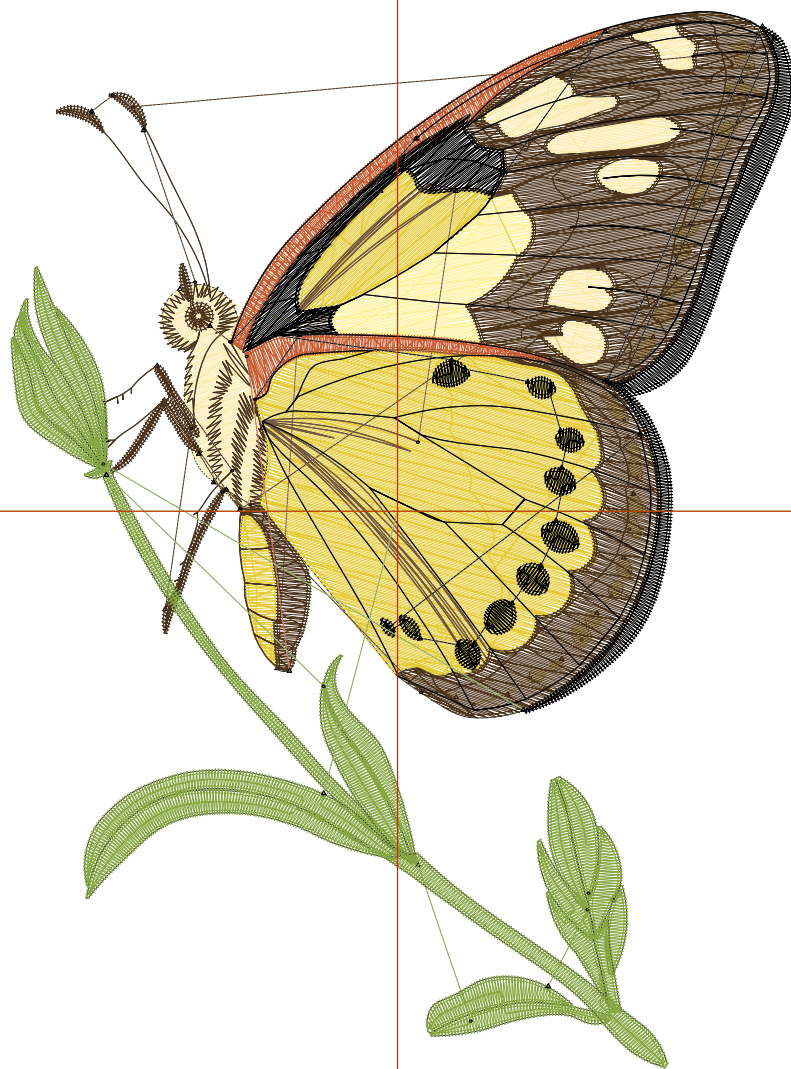
Title:

Stitches: 18,752
 Height: 5.50 in
 Width: 4.08 in
 Colors: 9
 Colorway: Colorway 1
 Zoom: 1:1

Machine format: Tajima
 Color changes: 8
 Stops: 9
 Trims: 57
 Appliqués: 0
 Left: 51.2 mm
 Right: 52.6 mm
 Up: 66.1 mm
 Down: 73.7 mm
 EndX: 0.00 in
 EndY: 0.00 in
 Area: 22.48 in²
 Max stitch: 8.5 mm
 Min stitch: 0.0 mm
 Max jump: 6.9 mm
 Total thread: 324.12ft
 Total bobbin: 117.41ft

Stop Sequence:

#	N#	Color	St.	Code	Name	Chart
1.	9		1,428		R252 G235 B174	
2.	6		527		R255 G242 B157	
3.	2		3,296		R230 G203 B54	
4.	3		279		R120 G87 B70	
5.	4		873		R227 G210 B127	
6.	5		5,020		R77 G51 B26	
7.	7		1,290		R201 G92 B49	
8.	8		2,389	8	Black	Default
9.	1		3,648		R133 G168 B67	



Production Worksheet

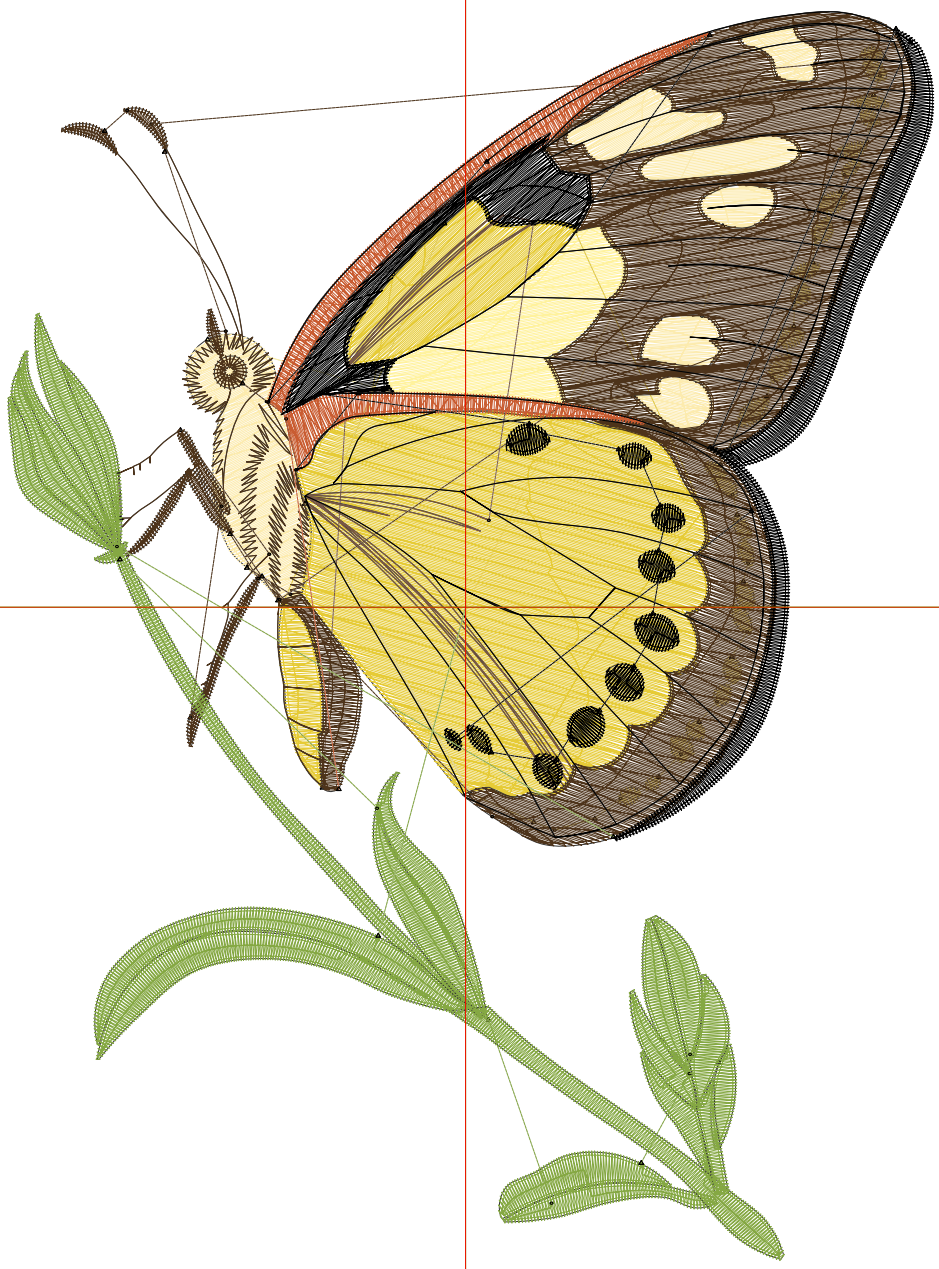
Wilcom EmbroideryStudio - Designing



Design: **6**

Title:

Stitches: 23,289
 Height: 6.50 in
 Width: 4.82 in
 Colors: 9
 Colorway: Colorway 1
 Zoom: 1:1



Machine format: Tajima
 Color changes: 8
 Stops: 9
 Trims: 58
 Appliqués: 0
 Left: 60.6 mm
 Right: 62.0 mm
 Up: 78.8 mm
 Down: 86.4 mm
 EndX: 0.00 in
 EndY: 0.00 in
 Area: 31.38 in²
 Max stitch: 11.7 mm
 Min stitch: 0.0 mm
 Max jump: 7.0 mm
 Total thread: 424.81ft
 Total bobbin: 159.43ft

Stop Sequence:

#	N#	Color	St.	Code	Name	Chart
1.	9		1,822		R252 G235 B174	
2.	6		685		R255 G242 B157	
3.	2		4,413		R230 G203 B54	
4.	3		325		R120 G87 B70	
5.	4		1,007		R227 G210 B127	
6.	5		6,353		R77 G51 B26	
7.	7		1,516		R201 G92 B49	
8.	8		2,839	8	Black	Default
9.	1		4,327		R133 G168 B67	

Production Worksheet

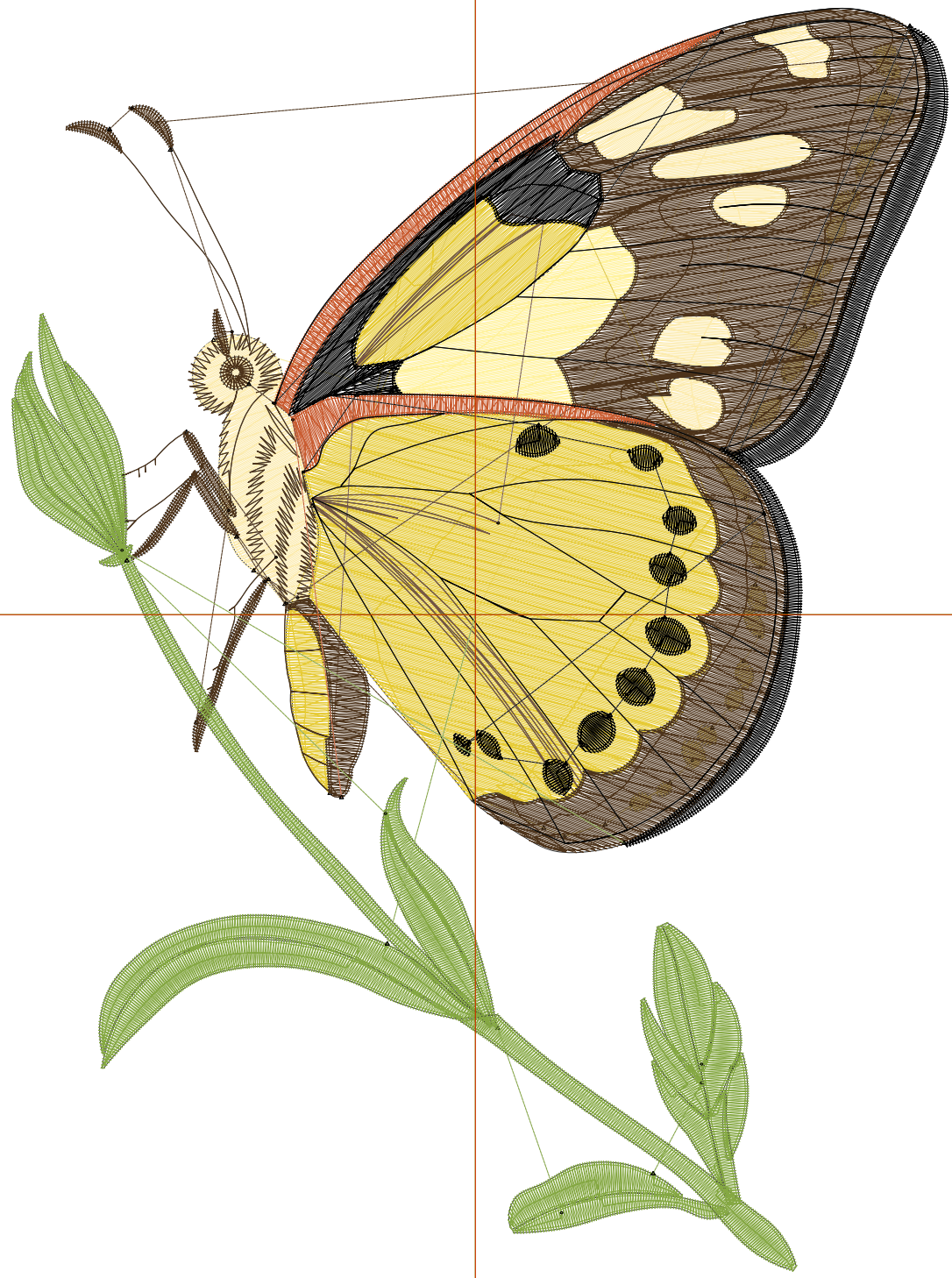
Wilcom EmbroideryStudio - Designing



Design: **7**

Title:

Stitches: 28,237
Height: 7.50 in
Width: 5.56 in
Colors: 9
Colorway: Colorway 1
Zoom: 1:1



Production Worksheet

Wilcom EmbroideryStudio - Designing



Design: **7**

Title:

Stitches: 28,237
 Height: 7.50 in
 Width: 5.56 in
 Colors: 9
 Colorway: Colorway 1
 Zoom: 1:1

Machine format: Tajima
 Color changes: 8
 Stops: 9
 Trims: 59
 Appliqués: 0
 Left: 70.0 mm
 Right: 71.4 mm
 Up: 91.5 mm
 Down: 99.1 mm
 EndX: 0.00 in
 EndY: 0.00 in
 Area 41.76 in²
 Max stitch: 7.0 mm
 Min stitch: 0.0 mm
 Max jump: 7.0 mm
 Total thread: 538.09ft
 Total bobbin: 207.32ft

Stop Sequence:

#	N#	Color	St.	Code	Name	Chart
1.	9		2,277		R252 G235 B174	
2.	6		870		R255 G242 B157	
3.	2		5,694		R230 G203 B54	
4.	3		371		R120 G87 B70	
5.	4		1,105		R227 G210 B127	
6.	5		7,801		R77 G51 B26	
7.	7		1,760		R201 G92 B49	
8.	8		3,313	8	Black	Default
9.	1		5,044		R133 G168 B67	