

# Production Worksheet

Wilcom EmbroideryStudio - Designing



Design: **3**

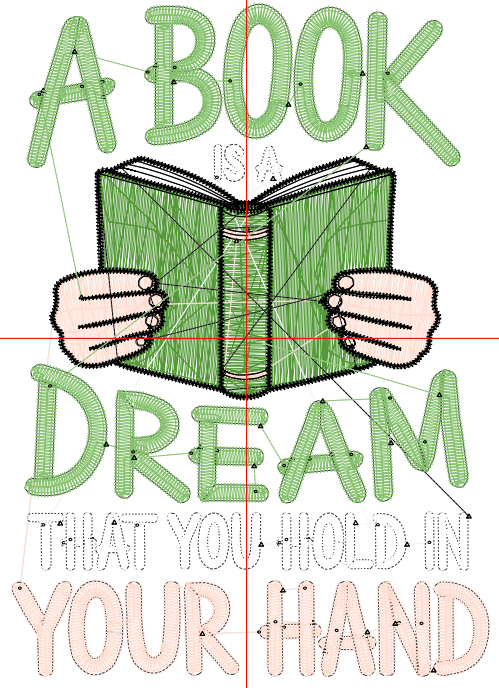
Title:

Stitches: 12,327  
Height: 3.51 in  
Width: 2.49 in  
Colors: 5  
Colorway: Colorway 1  
Zoom: 1:1

Machine format: Tajima  
Color changes: 4  
Stops: 5  
Trims: 60  
Appliqués: 0  
Left: 31.1 mm  
Right: 32.2 mm  
Up: 44.4 mm  
Down: 44.8 mm  
EndX: 0.00 in  
EndY: 0.00 in  
Area: 8.74 in<sup>2</sup>  
Max stitch: 7.0 mm  
Min stitch: 0.0 mm  
Max jump: 7.0 mm  
Total thread: 181.05ft  
Total bobbin: 58.38ft

Stop Sequence:

#	N#	Color	St.	Code	Name	Chart
1.	2		1,985		R83 G153 B55	
2.	3		2,715		R255 G222 B209	
3.	9		2,003	9	White	Default
4.	8		2,360	8	Black	Default
5.	1		3,262		R134 G194 B110	



# Production Worksheet

Wilcom EmbroideryStudio - Designing



Design: **4**

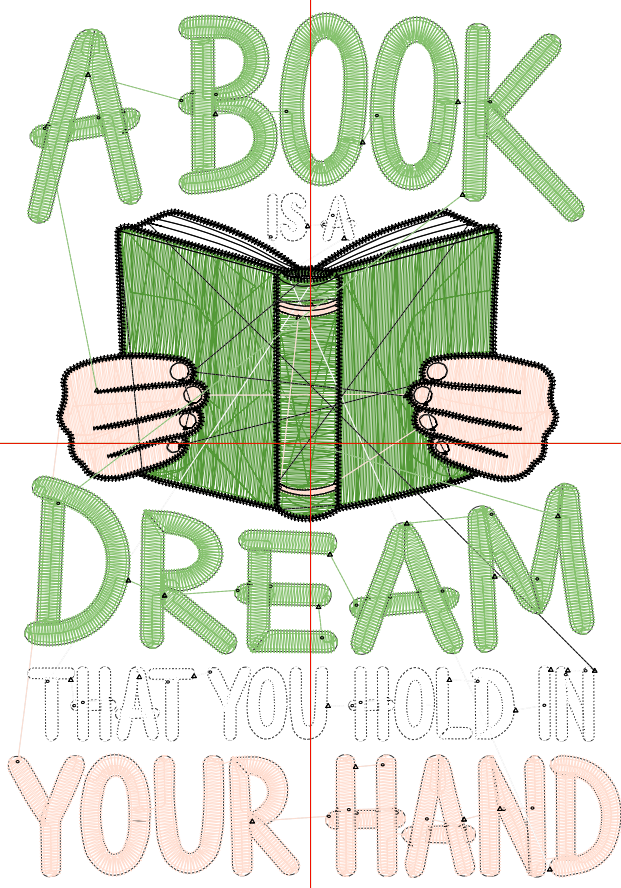
Title:

Stitches: 16,302  
 Height: 4.51 in  
 Width: 3.20 in  
 Colors: 5  
 Colorway: Colorway 1  
 Zoom: 1:1

Machine format: Tajima  
 Color changes: 4  
 Stops: 5  
 Trims: 69  
 Appliqués: 0  
 Left: 40.1 mm  
 Right: 41.2 mm  
 Up: 57.1 mm  
 Down: 57.5 mm  
 EndX: 0.00 in  
 EndY: 0.00 in  
 Area: 14.43 in<sup>2</sup>  
 Max stitch: 11.2 mm  
 Min stitch: 0.0 mm  
 Max jump: 7.0 mm  
 Total thread: 262.27ft  
 Total bobbin: 91.06ft

Stop Sequence:

#	N#	Color	St.	Code	Name	Chart
1.	2		2,943		R83 G153 B55	
2.	3		3,648		R255 G222 B209	
3.	9		2,555	9	White	Default
4.	8		2,989	8	Black	Default
5.	1		4,165		R134 G194 B110	



# Production Worksheet

Wilcom EmbroideryStudio - Designing



Design: **5**

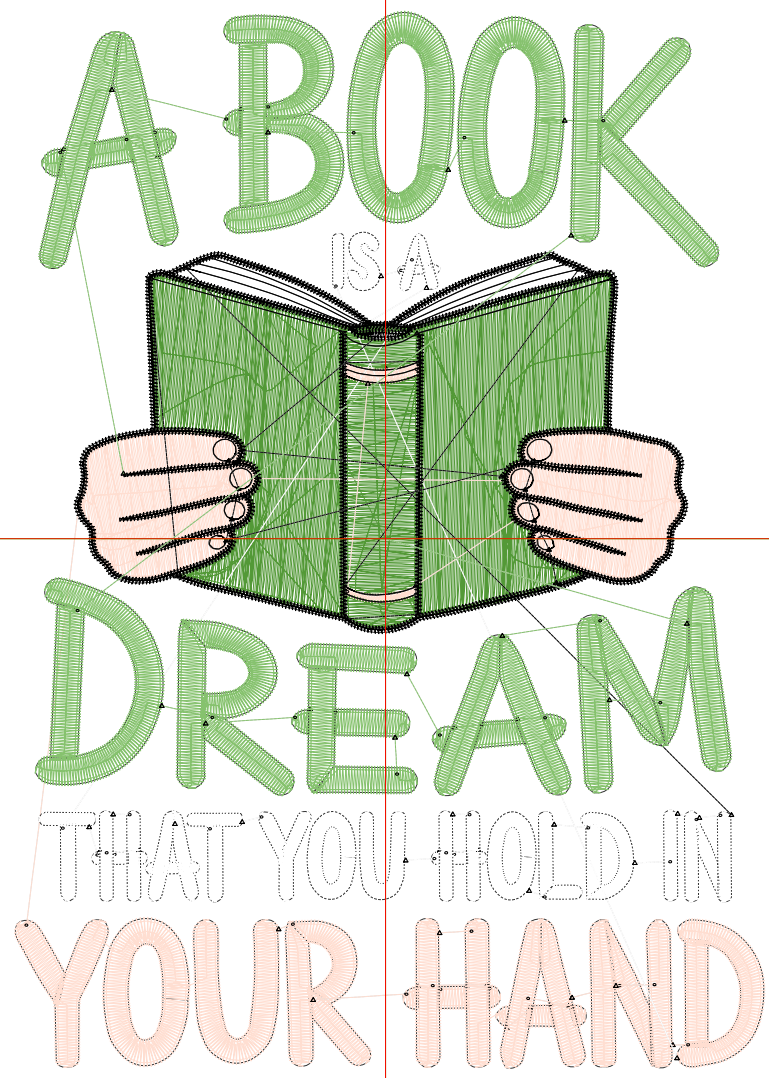
Title:

Stitches: 20,479  
 Height: 5.51 in  
 Width: 3.91 in  
 Colors: 5  
 Colorway: Colorway 1  
 Zoom: 1:1

Machine format: Tajima  
 Color changes: 4  
 Stops: 5  
 Trims: 76  
 Appliqués: 0  
 Left: 49.1 mm  
 Right: 50.2 mm  
 Up: 69.8 mm  
 Down: 70.1 mm  
 EndX: 0.00 in  
 EndY: 0.00 in  
 Area: 21.53 in<sup>2</sup>  
 Max stitch: 10.3 mm  
 Min stitch: 0.0 mm  
 Max jump: 7.0 mm  
 Total thread: 357.52ft  
 Total bobbin: 131.26ft

Stop Sequence:

#	N#	Color	St.	Code	Name	Chart
1.	2		4,034		R83 G153 B55	
2.	3		4,633		R255 G222 B209	
3.	9		3,160	9	White	Default
4.	8		3,579	8	Black	Default
5.	1		5,071		R134 G194 B110	



# Production Worksheet

Wilcom EmbroideryStudio - Designing



Design: **6**

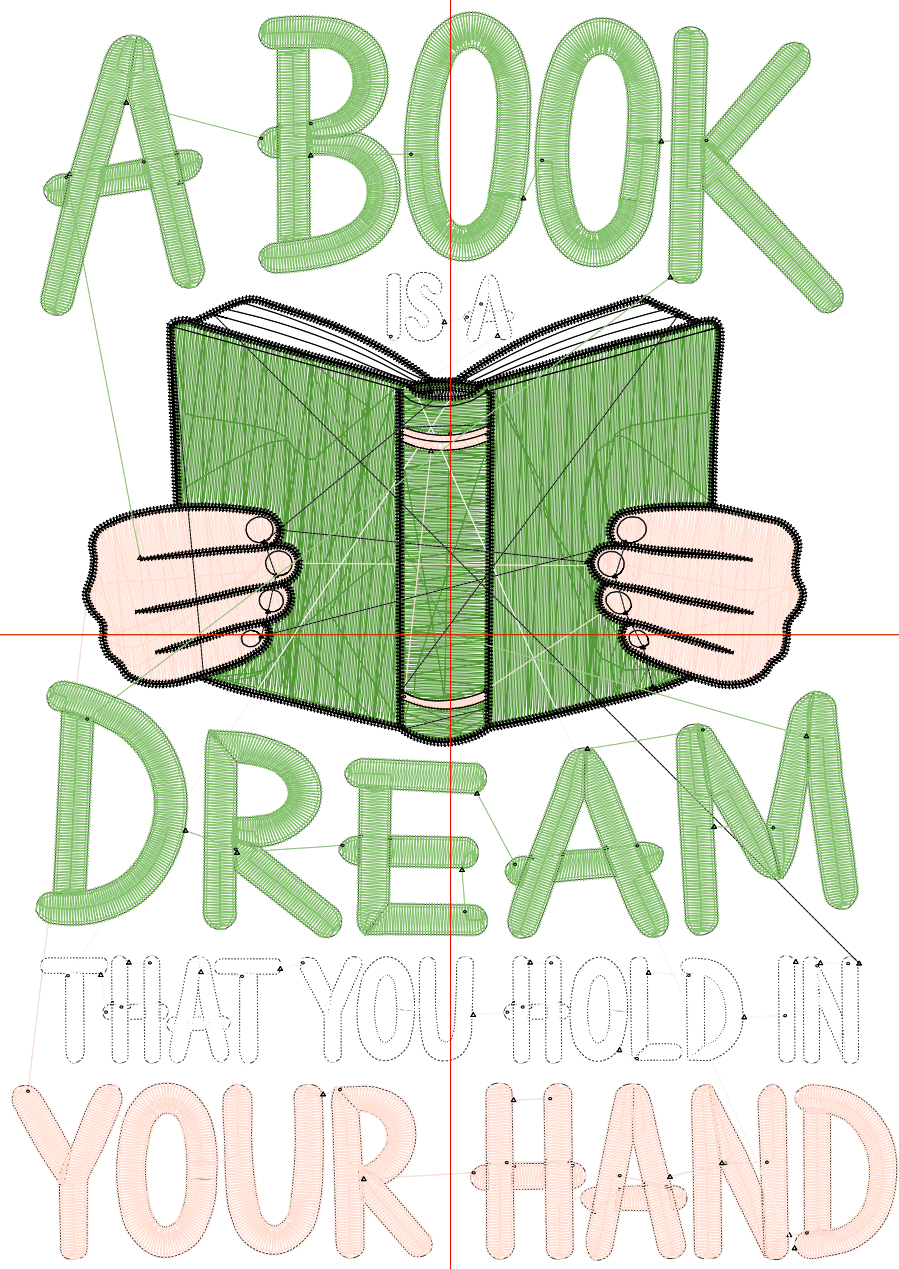
Title:

Stitches: 25,011  
 Height: 6.51 in  
 Width: 4.62 in  
 Colors: 5  
 Colorway: Colorway 1  
 Zoom: 1:1

Machine format: Tajima  
 Color changes: 4  
 Stops: 5  
 Trims: 76  
 Appliqués: 0  
 Left: 58.1 mm  
 Right: 59.2 mm  
 Up: 82.5 mm  
 Down: 82.8 mm  
 EndX: 0.00 in  
 EndY: 0.00 in  
 Area: 30.06 in<sup>2</sup>  
 Max stitch: 9.1 mm  
 Min stitch: 0.0 mm  
 Max jump: 6.9 mm  
 Total thread: 468.32ft  
 Total bobbin: 179.30ft

Stop Sequence:

#	N#	Color	St.	Code	Name	Chart
1.	2		5,332		R83 G153 B55	
2.	3		5,657		R255 G222 B209	
3.	9		3,733	9	White	Default
4.	8		4,206	8	Black	Default
5.	1		6,081		R134 G194 B110	



# Production Worksheet

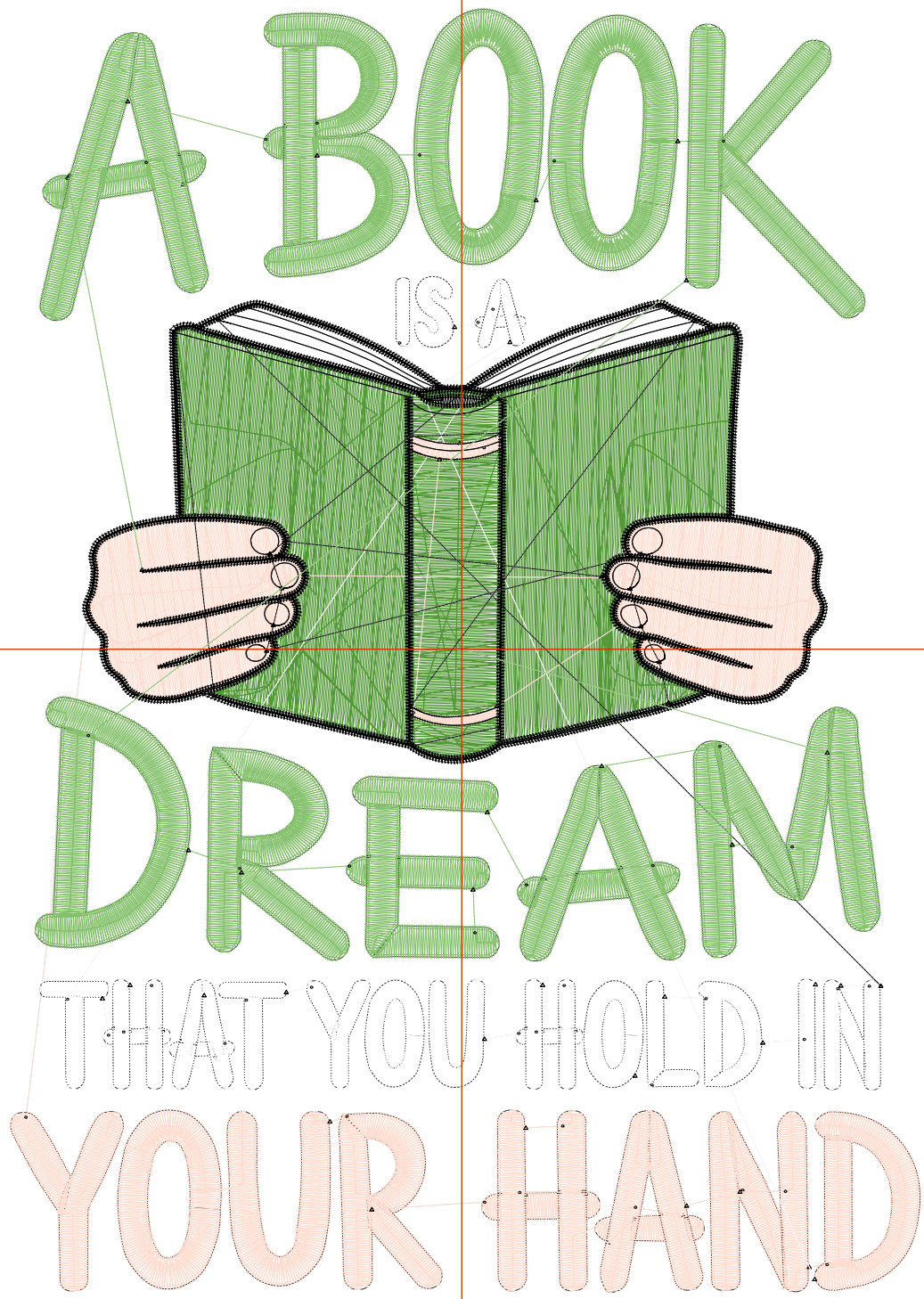
Wilcom EmbroideryStudio - Designing



Design: 7

Title:

Stitches: 29,887  
Height: 7.51 in  
Width: 5.33 in  
Colors: 5  
Colorway: Colorway 1  
Zoom: 1:1



# Production Worksheet

Wilcom EmbroideryStudio - Designing



Design: **7**

Title:

Stitches: 29,887  
 Height: 7.51 in  
 Width: 5.33 in  
 Colors: 5  
 Colorway: Colorway 1  
 Zoom: 1:1

Machine format: Tajima  
 Color changes: 4  
 Stops: 5  
 Trims: 81  
 Appliqués: 0  
 Left: 67.1 mm  
 Right: 68.2 mm  
 Up: 95.2 mm  
 Down: 95.5 mm  
 EndX: 0.00 in  
 EndY: 0.00 in  
 Area 39.99 in<sup>2</sup>  
 Max stitch: 10.6 mm  
 Min stitch: 0.0 mm  
 Max jump: 7.0 mm  
 Total thread: 595.93ft  
 Total bobbin: 235.96ft

Stop Sequence:

#	N#	Color	St.	Code	Name	Chart
1.	2		6,794		R83 G153 B55	
2.	3		6,791		R255 G222 B209	
3.	9		4,338	9	White	Default
4.	8		4,818	8	Black	Default
5.	1		7,144		R134 G194 B110	