

Production Worksheet

Wilcom EmbroideryStudio - Designing



Design: **3**

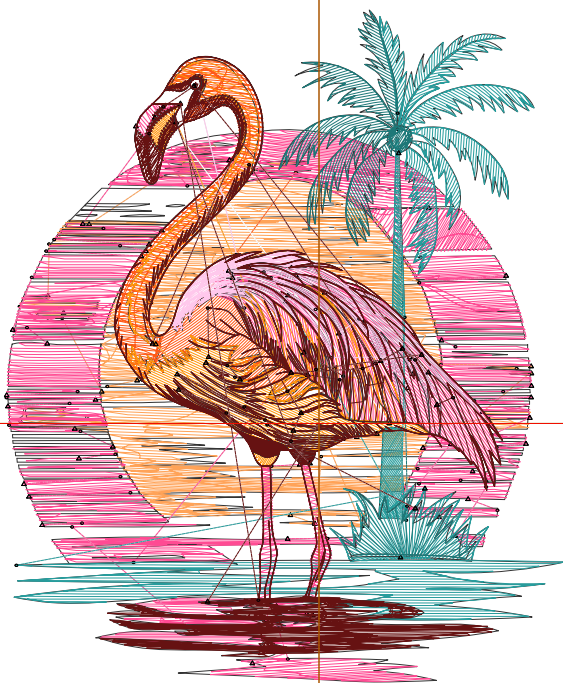
Title:

Stitches: 15,188
 Height: 3.49 in
 Width: 2.91 in
 Colors: 9
 Colorway: Colorway 1
 Zoom: 1:1

Machine format: Tajima
 Color changes: 8
 Stops: 9
 Trims: 103
 Appliqués: 0
 Left: 41.3 mm
 Right: 32.5 mm
 Up: 54.6 mm
 Down: 34.2 mm
 EndX: 0.00 in
 EndY: 0.00 in
 Area: 10.16 in²
 Max stitch: 11.8 mm
 Min stitch: 0.0 mm
 Max jump: 6.9 mm
 Total thread: 224.74ft
 Total bobbin: 72.37ft

Stop Sequence:

#	N#	Color	St.	Code	Name	Chart
1.	2		1,738		R255 G163 B88	
2.	5		1,003		R255 G90 B25	
3.	4		3,791		R255 G75 B147	
4.	7		1,145		R255 G149 B11	
5.	9		172	9	White	Default
6.	6		794		R255 G200 B236	
7.	10		1,820		R39 G156 B156	
8.	8		685		R30 G120 B120	
9.	3		4,038		R102 G18 B18	



1

2

2

Production Worksheet

Wilcom EmbroideryStudio - Designing



Design: **4**

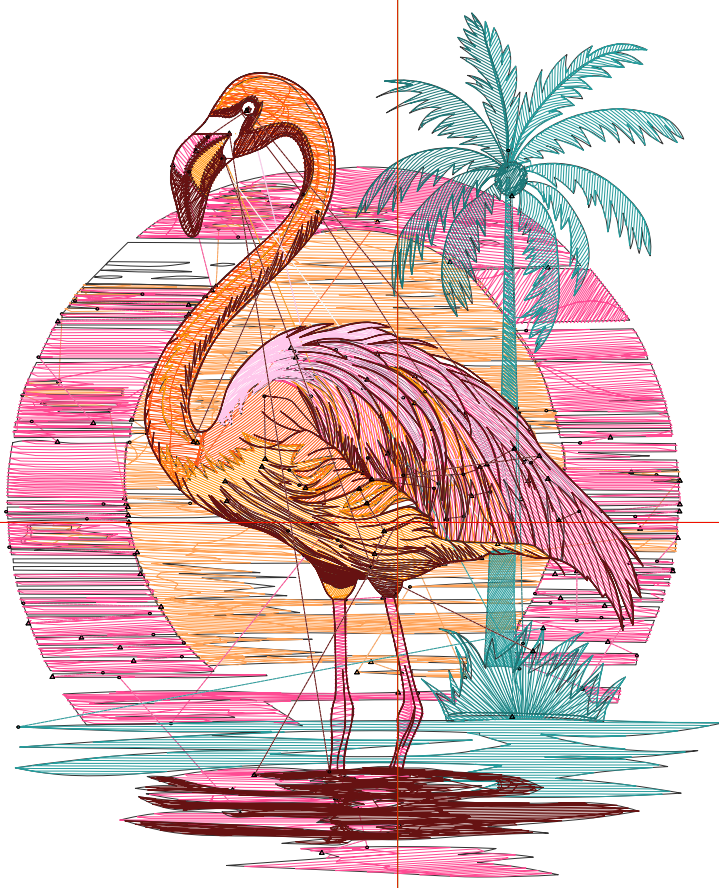
Title:

Stitches: 20,714
 Height: 4.50 in
 Width: 3.73 in
 Colors: 9
 Colorway: Colorway 1
 Zoom: 1:1

Machine format: Tajima
 Color changes: 8
 Stops: 9
 Trims: 116
 Appliqués: 0
 Left: 51.8 mm
 Right: 43.1 mm
 Up: 67.4 mm
 Down: 46.9 mm
 EndX: 0.00 in
 EndY: 0.00 in
 Area: 16.80 in²
 Max stitch: 10.8 mm
 Min stitch: 0.0 mm
 Max jump: 7.0 mm
 Total thread: 322.70ft
 Total bobbin: 108.94ft

Stop Sequence:

#	N#	Color	St.	Code	Name	Chart
1.	2		2,448		R255 G163 B88	
2.	5		1,419		R255 G90 B25	
3.	4		5,453		R255 G75 B147	
4.	7		1,606		R255 G149 B11	
5.	9		221	9	White	Default
6.	6		993		R255 G200 B236	
7.	10		2,466		R39 G156 B156	
8.	8		1,003		R30 G120 B120	
9.	3		5,103		R102 G18 B18	



Production Worksheet

Wilcom EmbroideryStudio - Designing



Design: **5**

Title:

Stitches: 26,771
 Height: 5.50 in
 Width: 4.56 in
 Colors: 9
 Colorway: Colorway 1
 Zoom: 1:1

Machine format: Tajima
 Color changes: 8
 Stops: 9
 Trims: 117
 Appliqués: 0
 Left: 62.3 mm
 Right: 53.6 mm
 Up: 80.1 mm
 Down: 59.6 mm
 EndX: 0.00 in
 EndY: 0.00 in
 Area: 25.10 in²
 Max stitch: 11.1 mm
 Min stitch: 0.0 mm
 Max jump: 6.9 mm
 Total thread: 437.91ft
 Total bobbin: 153.65ft

Stop Sequence:

#	N#	Color	St.	Code	Name	Chart
1.	2		3,278		R255 G163 B88	
2.	5		1,856		R255 G90 B25	
3.	4		7,166		R255 G75 B147	
4.	7		2,091		R255 G149 B11	
5.	9		259	9	White	Default
6.	6		1,228		R255 G200 B236	
7.	10		3,425		R39 G156 B156	
8.	8		1,300		R30 G120 B120	
9.	3		6,166		R102 G18 B18	



Production Worksheet

Wilcom EmbroideryStudio - Designing



Design: **6**

Title:

Stitches: 32,978
Height: 6.49 in
Width: 5.39 in
Colors: 9
Colorway: Colorway 1
Zoom: 1:1



Production Worksheet

Wilcom EmbroideryStudio - Designing



Design: **6**

Title:

Stitches: 32,978
 Height: 6.49 in
 Width: 5.39 in
 Colors: 9
 Colorway: Colorway 1
 Zoom: 1:1

Machine format: Tajima
 Color changes: 8
 Stops: 9
 Trims: 122
 Appliqués: 0
 Left: 72.9 mm
 Right: 64.1 mm
 Up: 92.4 mm
 Down: 72.3 mm
 EndX: 0.00 in
 EndY: 0.00 in
 Area 34.97 in²
 Max stitch: 10.9 mm
 Min stitch: 0.0 mm
 Max jump: 7.0 mm
 Total thread: 559.09ft
 Total bobbin: 201.33ft

Stop Sequence:

#	N#	Color	St.	Code	Name	Chart
1.	2		4,172		R255 G163 B88	
2.	5		2,341		R255 G90 B25	
3.	4		9,162		R255 G75 B147	
4.	7		2,627		R255 G149 B11	
5.	9		295	9	White	Default
6.	6		1,471		R255 G200 B236	
7.	10		4,181		R39 G156 B156	
8.	8		1,623		R30 G120 B120	
9.	3		7,104		R102 G18 B18	

Production Worksheet

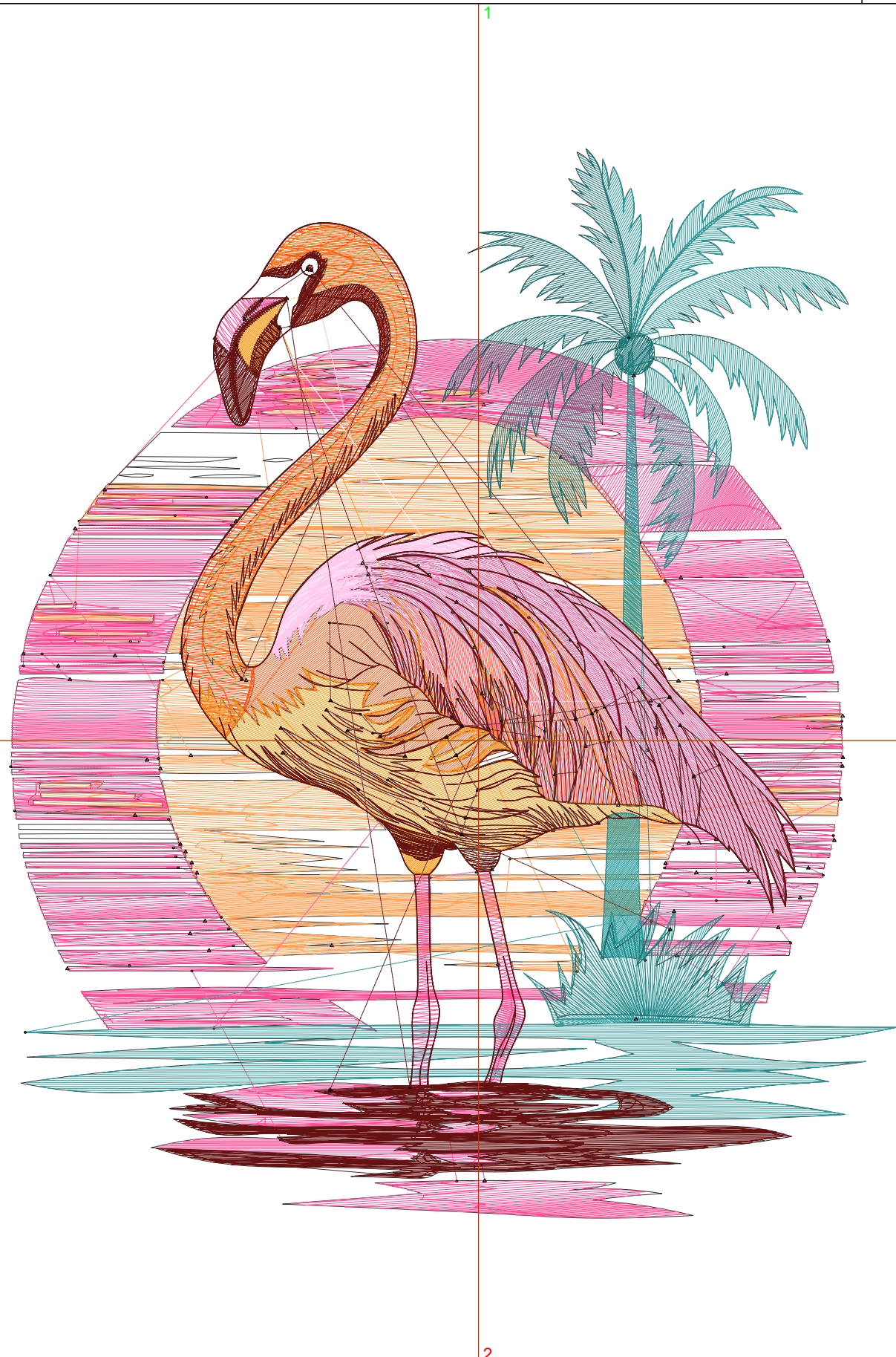
Wilcom EmbroideryStudio - Designing



Design: **7**

Title:

Stitches: 40,231
Height: 7.49 in
Width: 6.22 in
Colors: 9
Colorway: Colorway 1
Zoom: 1:1



Production Worksheet

Wilcom EmbroideryStudio - Designing



Design: **7**

Title:

Stitches: 40,231
 Height: 7.49 in
 Width: 6.22 in
 Colors: 9
 Colorway: Colorway 1
 Zoom: 1:1

Machine format: Tajima
 Color changes: 8
 Stops: 9
 Trims: 126
 Appliqués: 0
 Left: 83.4 mm
 Right: 74.6 mm
 Up: 105.3 mm
 Down: 85.0 mm
 EndX: 0.00 in
 EndY: 0.00 in
 Area 46.60 in²
 Max stitch: 11.9 mm
 Min stitch: 0.0 mm
 Max jump: 7.0 mm
 Total thread: 701.33ft
 Total bobbin: 257.42ft

Stop Sequence:

#	N#	Color	St.	Code	Name	Chart
1.	2		5,264		R255 G163 B88	
2.	5		2,882		R255 G90 B25	
3.	4		11,620		R255 G75 B147	
4.	7		3,198		R255 G149 B11	
5.	9		363	9	White	Default
6.	6		1,652		R255 G200 B236	
7.	10		5,191		R39 G156 B156	
8.	8		1,922		R30 G120 B120	
9.	3		8,137		R102 G18 B18	