

Production Worksheet

Wilcom EmbroideryStudio - Designing



Design: **3**

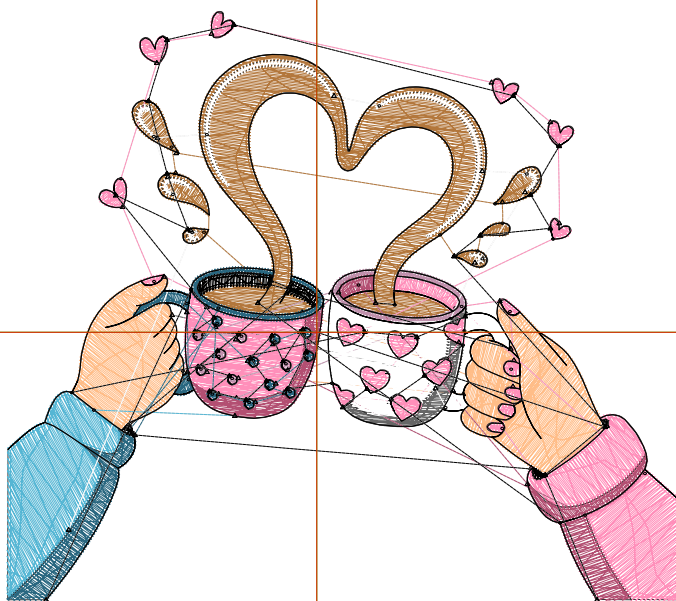
Title:

Stitches: 12,790
 Height: 77.9 mm
 Width: 89.2 mm
 Colors: 10
 Colorway: Colorway 1
 Zoom: 1:1

Machine format: Tajima
 Color changes: 9
 Stops: 10
 Trims: 106
 Appliqués: 0
 Left: 41.0 mm
 Right: 48.1 mm
 Up: 42.4 mm
 Down: 35.5 mm
 EndX: 0.0 mm
 EndY: 0.0 mm
 Area: 6947.2 mm²
 Max stitch: 11.6 mm
 Min stitch: 0.0 mm
 Max jump: 6.9 mm
 Total thread: 53.65m
 Total bobbin: 16.04m

Stop Sequence:

#	N#	Color	St.	Code	Name	Chart
1.	7		1,909		R179 G119 B60	
2.	6		1,444		R255 G189 B136	
3.	18		263	18	Grey	Default
4.	5		2,778		R255 G143 B186	
5.	4		584		R192 G145 B173	
6.	3		829		R179 G79 B114	
7.	2		547		R85 G182 B212	
8.	1		1,195		R41 G103 B128	
9.	9		1,525	9	White	Default
10.	8		1,714	8	Black	Default



Production Worksheet

Wilcom EmbroideryStudio - Designing



Design: **4**

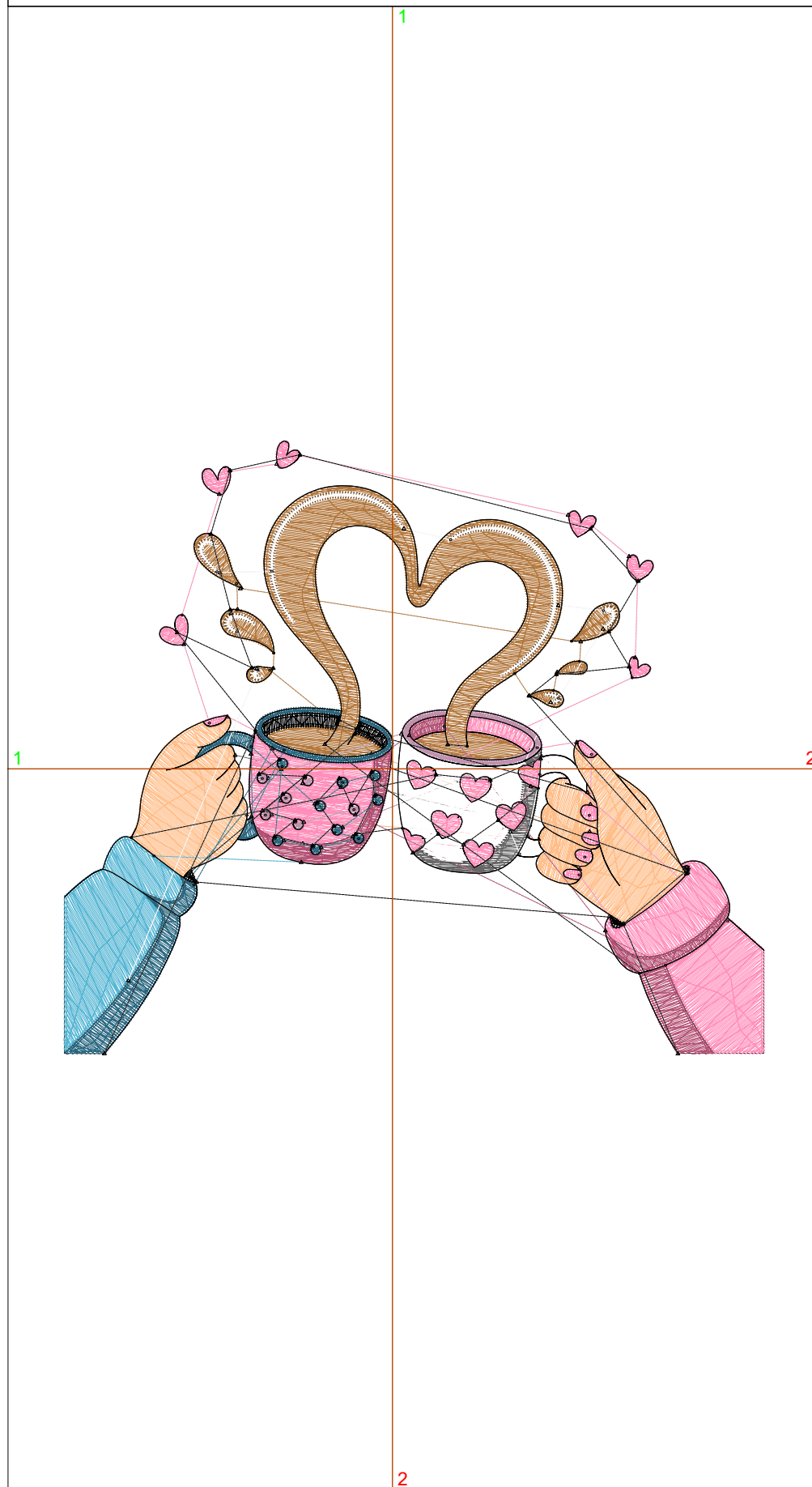
Title:

Stitches: 16,687
 Height: 100.2 mm
 Width: 114.5 mm
 Colors: 10
 Colorway: Colorway 1
 Zoom: 1:1

Machine format: Tajima
 Color changes: 9
 Stops: 10
 Trims: 109
 Appliqués: 0
 Left: 53.7 mm
 Right: 60.8 mm
 Up: 53.6 mm
 Down: 46.6 mm
 EndX: 0.0 mm
 EndY: 0.0 mm
 Area: 11467.9 mm²
 Max stitch: 7.7 mm
 Min stitch: 0.1 mm
 Max jump: 6.9 mm
 Total thread: 75.29m
 Total bobbin: 24.25m

Stop Sequence:

#	N#	Color	St.	Code	Name	Chart
1.	7		2,654		R179 G119 B60	
2.	6		2,008		R255 G189 B136	
3.	18		347	18	Grey	Default
4.	5		3,665		R255 G143 B186	
5.	4		721		R192 G145 B173	
6.	3		1,078		R179 G79 B114	
7.	2		799		R85 G182 B212	
8.	1		1,480		R41 G103 B128	
9.	9		1,920	9	White	Default
10.	8		2,013	8	Black	Default



Production Worksheet

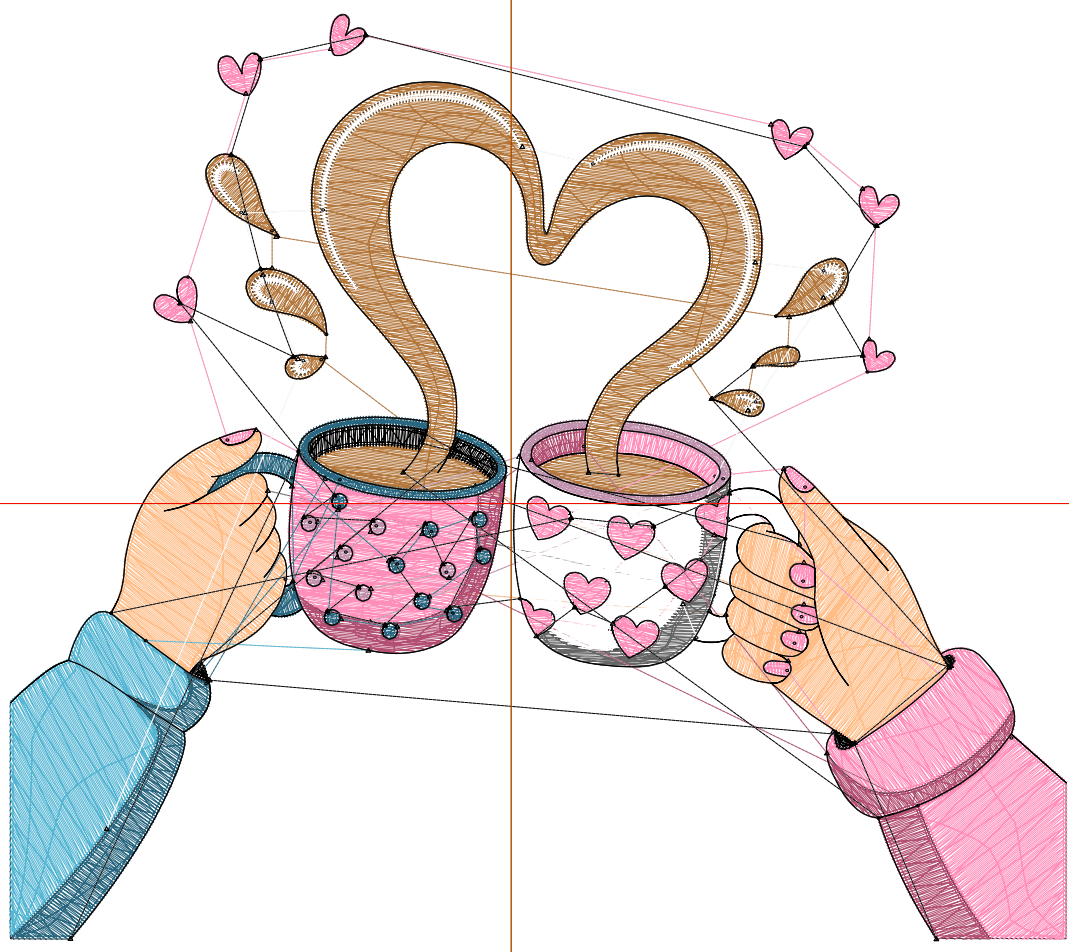
Wilcom EmbroideryStudio - Designing



Design: **5**

Title:

Stitches: 21,202
Height: 122.4 mm
Width: 139.9 mm
Colors: 10
Colorway: Colorway 1
Zoom: 1:1



Production Worksheet

Wilcom EmbroideryStudio - Designing



Design: **5**

Title:

Stitches: 21,202
 Height: 122.4 mm
 Width: 139.9 mm
 Colors: 10
 Colorway: Colorway 1
 Zoom: 1:1

Machine format: Tajima
 Color changes: 9
 Stops: 10
 Trims: 111
 Appliqués: 0
 Left: 66.4 mm
 Right: 73.5 mm
 Up: 64.7 mm
 Down: 57.7 mm
 EndX: 0.0 mm
 EndY: 0.0 mm
 Area 17118.5 mm²
 Max stitch: 9.4 mm
 Min stitch: 0.1 mm
 Max jump: 7.0 mm
 Total thread: 100.95m
 Total bobbin: 34.10m

Stop Sequence:

#	N#	Color	St.	Code	Name	Chart
1.	7		3,467		R179 G119 B60	
2.	6		2,705		R255 G189 B136	
3.	18		430	18	Grey	Default
4.	5		4,673		R255 G143 B186	
5.	4		941		R192 G145 B173	
6.	3		1,371		R179 G79 B114	
7.	2		1,113		R85 G182 B212	
8.	1		1,846		R41 G103 B128	
9.	9		2,384	9	White	Default
10.	8		2,270	8	Black	Default

Production Worksheet

Wilcom EmbroideryStudio - Designing



Design: **6**

Title:

Stitches: 26,147
Height: 144.7 mm
Width: 165.3 mm
Colors: 10
Colorway: Colorway 1
Zoom: 1:1



Production Worksheet

Wilcom EmbroideryStudio - Designing



Design: **6**

Title:

Stitches: 26,147
 Height: 144.7 mm
 Width: 165.3 mm
 Colors: 10
 Colorway: Colorway 1
 Zoom: 1:1

Machine format: Tajima
 Color changes: 9
 Stops: 10
 Trims: 111
 Appliqués: 0
 Left: 79.1 mm
 Right: 86.2 mm
 Up: 75.8 mm
 Down: 68.8 mm
 EndX: 0.0 mm
 EndY: 0.0 mm
 Area 23913.7 mm²
 Max stitch: 11.2 mm
 Min stitch: 0.0 mm
 Max jump: 7.0 mm
 Total thread: 130.56m
 Total bobbin: 45.79m

Stop Sequence:

#	N#	Color	St.	Code	Name	Chart
1.	7		4,511		R179 G119 B60	
2.	6		3,485		R255 G189 B136	
3.	18		522	18	Grey	Default
4.	5		5,768		R255 G143 B186	
5.	4		1,071		R192 G145 B173	
6.	3		1,676		R179 G79 B114	
7.	2		1,477		R85 G182 B212	
8.	1		2,233		R41 G103 B128	
9.	9		2,874	9	White	Default
10.	8		2,528	8	Black	Default

Production Worksheet

Wilcom EmbroideryStudio - Designing



Design: 7

Title:

Stitches: 31,309
Height: 166.9 mm
Width: 190.7 mm
Colors: 10
Colorway: Colorway 1
Zoom: 1:1



Production Worksheet

Wilcom EmbroideryStudio - Designing



Design: **7**

Title:

Stitches: 31,309
 Height: 166.9 mm
 Width: 190.7 mm
 Colors: 10
 Colorway: Colorway 1
 Zoom: 1:1

Machine format: Tajima
 Color changes: 9
 Stops: 10
 Trims: 112
 Appliqués: 0
 Left: 91.8 mm
 Right: 98.9 mm
 Up: 86.9 mm
 Down: 79.9 mm
 EndX: 0.0 mm
 EndY: 0.0 mm
 Area 31824.1 mm²
 Max stitch: 6.9 mm
 Min stitch: 0.2 mm
 Max jump: 6.9 mm
 Total thread: 163.00m
 Total bobbin: 58.89m

Stop Sequence:

#	N#	Color	St.	Code	Name	Chart
1.	7		5,596		R179 G119 B60	
2.	6		4,318		R255 G189 B136	
3.	18		629	18	Grey	Default
4.	5		6,897		R255 G143 B186	
5.	4		1,219		R192 G145 B173	
6.	3		1,995		R179 G79 B114	
7.	2		1,891		R85 G182 B212	
8.	1		2,616		R41 G103 B128	
9.	9		3,369	9	White	Default
10.	8		2,777	8	Black	Default