

# Production Worksheet

Wilcom EmbroideryStudio - Designing



Design: **3**

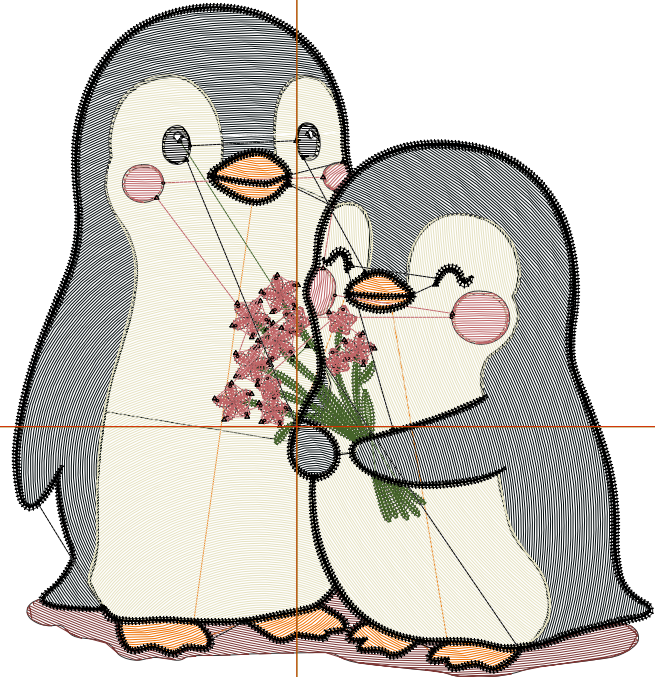
Title:

Stitches: 16,795  
 Height: 3.51 in  
 Width: 3.34 in  
 Colors: 8  
 Colorway: Colorway 1  
 Zoom: 1:1

Machine format: Tajima  
 Color changes: 7  
 Stops: 8  
 Trims: 76  
 Appliqués: 0  
 Left: 37.7 mm  
 Right: 47.2 mm  
 Up: 56.0 mm  
 Down: 33.0 mm  
 EndX: 0.00 in  
 EndY: 0.00 in  
 Area 11.71 in<sup>2</sup>  
 Max stitch: 7.0 mm  
 Min stitch: 0.0 mm  
 Max jump: 7.0 mm  
 Total thread: 229.20ft  
 Total bobbin: 68.96ft

Stop Sequence:

#	N#	Color	St.	Code	Name	Chart
1.	2		539		R240 G115 B5	
2.	1		3,578		R4 G13 B15	
3.	3		494		R125 G55 B53	
4.	4		5,403		R230 G226 B194	
5.	9		36	9	White	Default
6.	7		1,041		R69 G99 B42	
7.	6		1,920		R191 G101 B103	
8.	8		3,782	8	Black	Default



# Production Worksheet

Wilcom EmbroideryStudio - Designing



Design: **4**

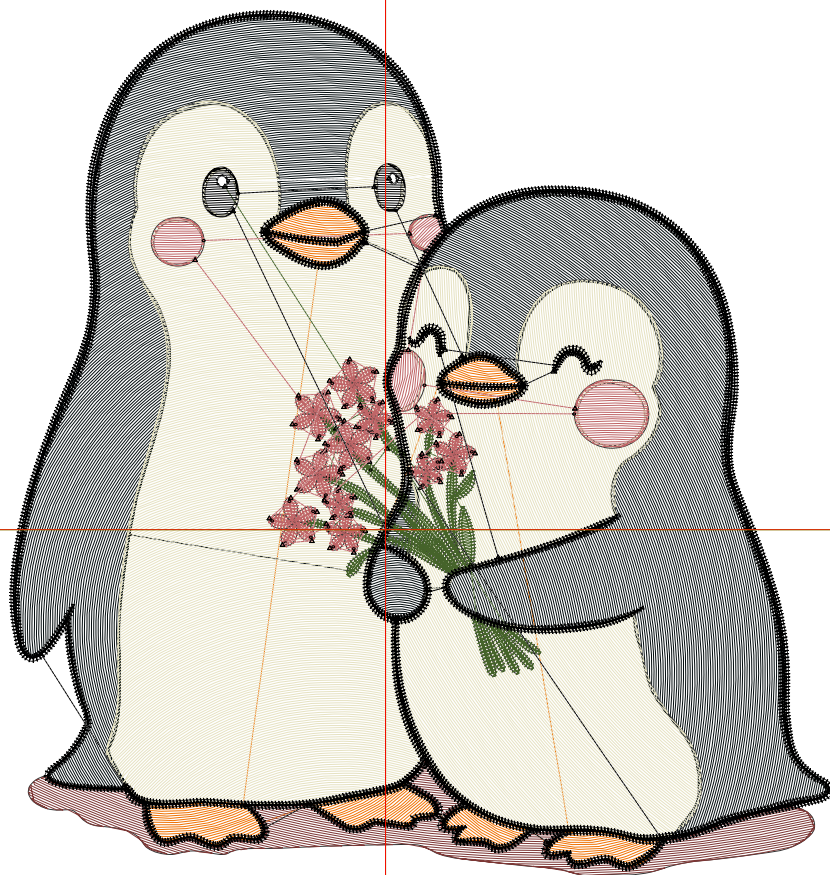
Title:

Stitches: 23,601  
 Height: 4.50 in  
 Width: 4.29 in  
 Colors: 8  
 Colorway: Colorway 1  
 Zoom: 1:1

Machine format: Tajima  
 Color changes: 7  
 Stops: 8  
 Trims: 94  
 Appliqués: 0  
 Left: 49.8 mm  
 Right: 59.3 mm  
 Up: 68.7 mm  
 Down: 45.7 mm  
 EndX: 0.00 in  
 EndY: 0.00 in  
 Area: 19.34 in<sup>2</sup>  
 Max stitch: 7.6 mm  
 Min stitch: 0.0 mm  
 Max jump: 6.8 mm  
 Total thread: 340.73ft  
 Total bobbin: 108.59ft

Stop Sequence:

#	N#	Color	St.	Code	Name	Chart
1.	2		782		R240 G115 B5	
2.	1		5,391		R4 G13 B15	
3.	3		701		R125 G55 B53	
4.	4		8,056		R230 G226 B194	
5.	9		46	9	White	Default
6.	7		1,315		R69 G99 B42	
7.	6		2,453		R191 G101 B103	
8.	8		4,855	8	Black	Default



# Production Worksheet

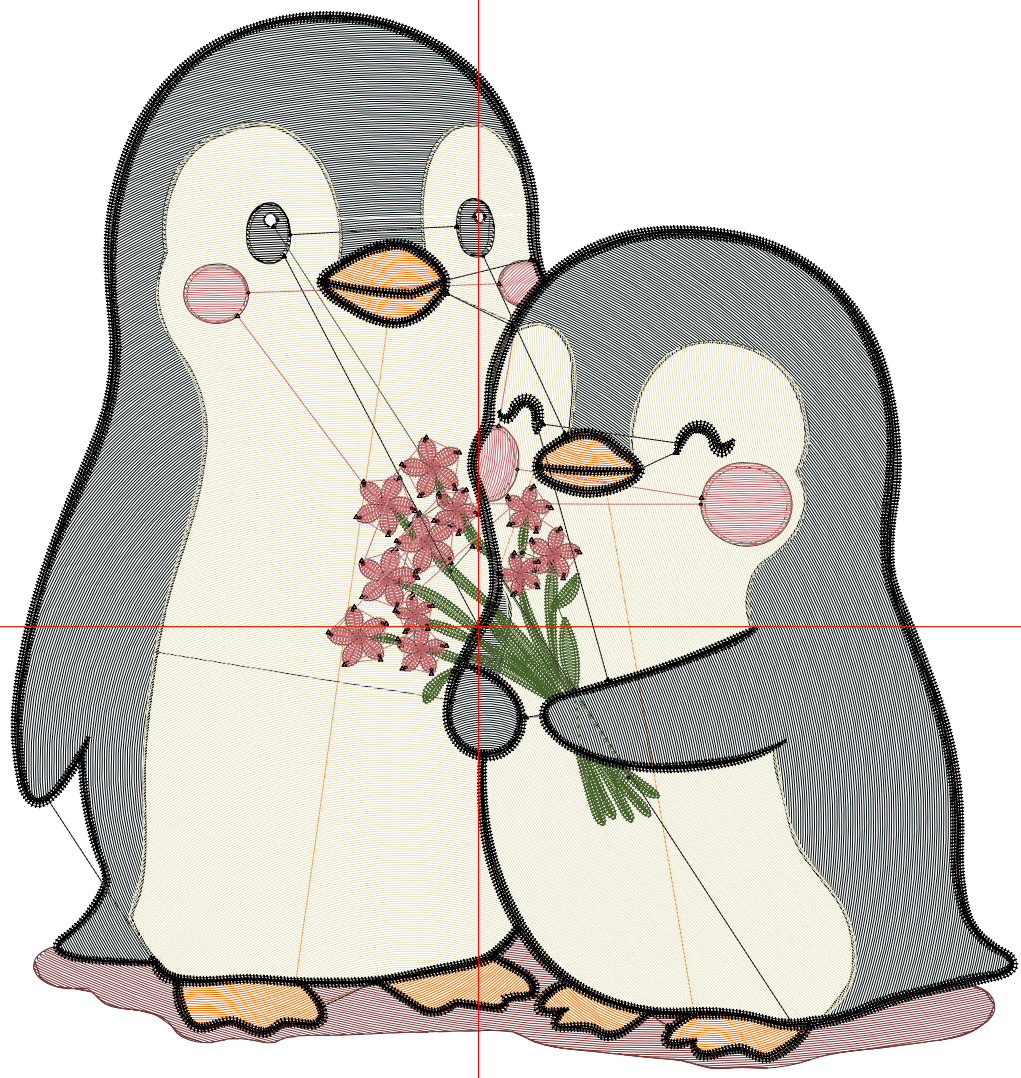
Wilcom EmbroideryStudio - Designing



Design: **5**

Title:

Stitches: 31,649  
Height: 5.50 in  
Width: 5.25 in  
Colors: 8  
Colorway: Colorway 1  
Zoom: 1:1



# Production Worksheet

Wilcom EmbroideryStudio - Designing



Design: **5**

Title:

Stitches: 31,649  
 Height: 5.50 in  
 Width: 5.25 in  
 Colors: 8  
 Colorway: Colorway 1  
 Zoom: 1:1

Machine format: Tajima  
 Color changes: 7  
 Stops: 8  
 Trims: 95  
 Appliqués: 0  
 Left: 61.8 mm  
 Right: 71.4 mm  
 Up: 81.4 mm  
 Down: 58.4 mm  
 EndX: 0.00 in  
 EndY: 0.00 in  
 Area 28.87 in<sup>2</sup>  
 Max stitch: 9.3 mm  
 Min stitch: 0.0 mm  
 Max jump: 7.0 mm  
 Total thread: 476.06ft  
 Total bobbin: 157.49ft

Stop Sequence:

#	N#	Color	St.	Code	Name	Chart
1.	2		1,030		R240 G115 B5	
2.	1		7,700		R4 G13 B15	
3.	3		924		R125 G55 B53	
4.	4		11,713		R230 G226 B194	
5.	9		48	9	White	Default
6.	7		1,555		R69 G99 B42	
7.	6		2,756		R191 G101 B103	
8.	8		5,921	8	Black	Default

# Production Worksheet

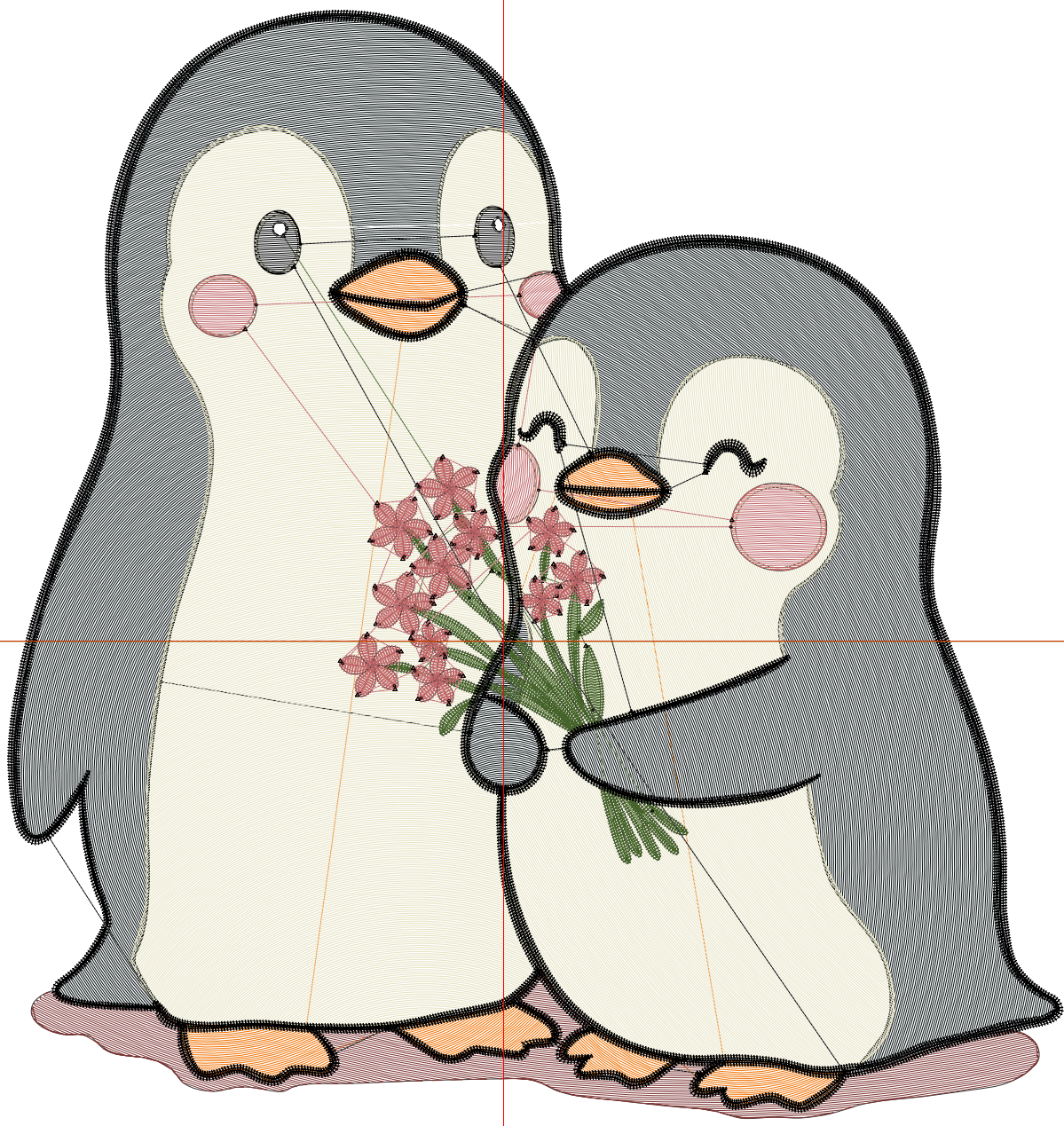
Wilcom EmbroideryStudio - Designing



Design: **6**

Title:

Stitches: 41,675  
Height: 6.50 in  
Width: 6.20 in  
Colors: 8  
Colorway: Colorway 1  
Zoom: 1:1



# Production Worksheet

Wilcom EmbroideryStudio - Designing



Design: **6**

Title:

Stitches: 41,675  
 Height: 6.50 in  
 Width: 6.20 in  
 Colors: 8  
 Colorway: Colorway 1  
 Zoom: 1:1

Machine format: Tajima  
 Color changes: 7  
 Stops: 8  
 Trims: 96  
 Appliqués: 0  
 Left: 73.9 mm  
 Right: 83.5 mm  
 Up: 94.1 mm  
 Down: 71.1 mm  
 EndX: 0.00 in  
 EndY: 0.00 in  
 Area 40.31 in<sup>2</sup>  
 Max stitch: 11.0 mm  
 Min stitch: 0.0 mm  
 Max jump: 7.0 mm  
 Total thread: 639.97ft  
 Total bobbin: 215.64ft

Stop Sequence:

#	N#	Color	St.	Code	Name	Chart
1.	2		1,320		R240 G115 B5	
2.	1		10,685		R4 G13 B15	
3.	3		1,207		R125 G55 B53	
4.	4		16,455		R230 G226 B194	
5.	9		54	9	White	Default
6.	7		1,822		R69 G99 B42	
7.	6		3,129		R191 G101 B103	
8.	8		7,001	8	Black	Default

# Production Worksheet

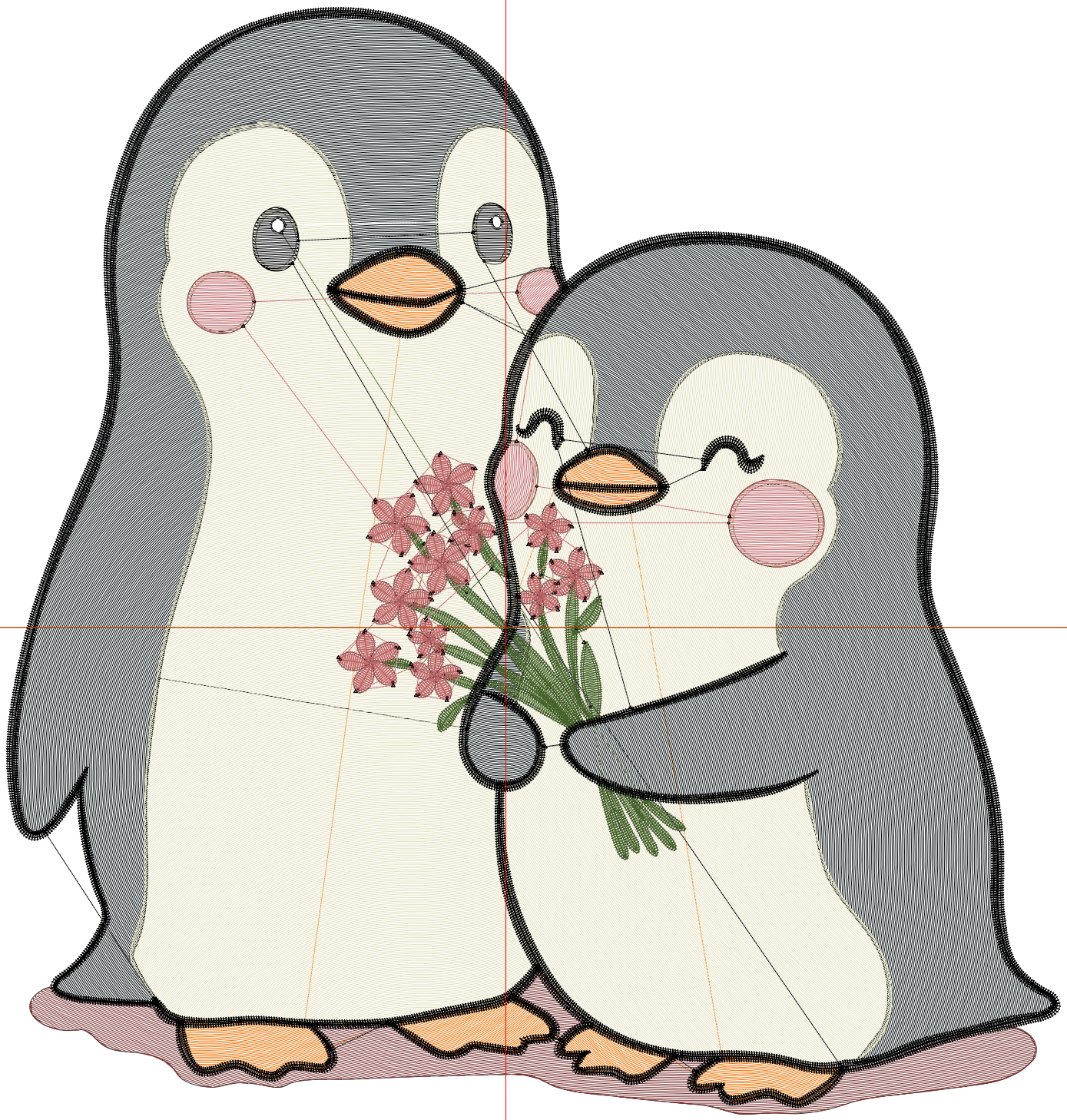
Wilcom EmbroideryStudio - Designing



Design: **7**

Title:

Stitches: 52,281  
Height: 7.50 in  
Width: 7.15 in  
Colors: 8  
Colorway: Colorway 1  
Zoom: 1:1



# Production Worksheet

Wilcom EmbroideryStudio - Designing



Design: **7**

Title:

Stitches: 52,281  
 Height: 7.50 in  
 Width: 7.15 in  
 Colors: 8  
 Colorway: Colorway 1  
 Zoom: 1:1

Machine format: Tajima  
 Color changes: 7  
 Stops: 8  
 Trims: 97  
 Appliqués: 0  
 Left: 86.0 mm  
 Right: 95.6 mm  
 Up: 106.8 mm  
 Down: 83.8 mm  
 EndX: 0.00 in  
 EndY: 0.00 in  
 Area 53.64 in<sup>2</sup>  
 Max stitch: 8.4 mm  
 Min stitch: 0.0 mm  
 Max jump: 7.0 mm  
 Total thread: 821.73ft  
 Total bobbin: 282.11ft

Stop Sequence:

#	N#	Color	St.	Code	Name	Chart
1.	2		1,664		R240 G115 B5	
2.	1		13,834		R4 G13 B15	
3.	3		1,532		R125 G55 B53	
4.	4		21,512		R230 G226 B194	
5.	9		67	9	White	Default
6.	7		2,082		R69 G99 B42	
7.	6		3,501		R191 G101 B103	
8.	8		8,087	8	Black	Default