

Production Worksheet

Wilcom EmbroideryStudio - Designing



Design: **3**

Title:

Stitches: 8,334
 Height: 2.98 in
 Width: 3.51 in
 Colors: 5
 Colorway: Colorway 1
 Zoom: 1:1

Machine format: Tajima
 Color changes: 4
 Stops: 5
 Trims: 40
 Appliqués: 0
 Left: 49.6 mm
 Right: 39.6 mm
 Up: 46.7 mm
 Down: 29.0 mm
 EndX: 0.00 in
 EndY: 0.00 in
 Area 10.46 in²
 Max stitch: 6.7 mm
 Min stitch: 0.0 mm
 Max jump: 6.7 mm
 Total thread: 140.54ft
 Total bobbin: 49.90ft

Stop Sequence:

#	N#	Color	St.	Code	Name	Chart
1.	8		3,168	8	Black	Default
2.	2		586		R96 G196 B63	
3.	1		972		R97 G166 B196	
4.	3		840		R98 G204 B204	
5.	4		2,766		R255 G75 B132	



Production Worksheet

Wilcom EmbroideryStudio - Designing



Design: **4**

Title:

Stitches: 11,072
 Height: 3.83 in
 Width: 4.51 in
 Colors: 5
 Colorway: Colorway 1
 Zoom: 1:1

Machine format: Tajima
 Color changes: 4
 Stops: 5
 Trims: 43
 Appliqués: 0
 Left: 62.3 mm
 Right: 52.3 mm
 Up: 57.4 mm
 Down: 39.8 mm
 EndX: 0.00 in
 EndY: 0.00 in
 Area 17.26 in²
 Max stitch: 6.8 mm
 Min stitch: 0.0 mm
 Max jump: 7.0 mm
 Total thread: 212.05ft
 Total bobbin: 81.64ft

Stop Sequence:

#	N#	Color	St.	Code	Name	Chart
1.	8	Black	4,131	8	Black	Default
2.	2	Green	769		R96 G196 B63	
3.	1	Blue	1,411		R97 G166 B196	
4.	3	Cyan	1,051		R98 G204 B204	
5.	4	Pink	3,708		R255 G75 B132	



Production Worksheet

Wilcom EmbroideryStudio - Designing



Design: **5**

Title:

Stitches: 13,898
Height: 4.67 in
Width: 5.51 in
Colors: 5
Colorway: Colorway 1
Zoom: 1:1



Production Worksheet

Wilcom EmbroideryStudio - Designing



Design: **5**

Title:

Stitches: 13,898
 Height: 4.67 in
 Width: 5.51 in
 Colors: 5
 Colorway: Colorway 1
 Zoom: 1:1

Machine format: Tajima
 Color changes: 4
 Stops: 5
 Trims: 44
 Appliqués: 0
 Left: 75.0 mm
 Right: 65.0 mm
 Up: 68.2 mm
 Down: 50.5 mm
 EndX: 0.00 in
 EndY: 0.00 in
 Area 25.76 in²
 Max stitch: 8.0 mm
 Min stitch: 0.0 mm
 Max jump: 7.0 mm
 Total thread: 297.83ft
 Total bobbin: 121.48ft

Stop Sequence:

#	N#	Color	St.	Code	Name	Chart
1.	8		5,139	8	Black	Default
2.	2		948		R96 G196 B63	
3.	1		1,867		R97 G166 B196	
4.	3		1,193		R98 G204 B204	
5.	4		4,749		R255 G75 B132	

Production Worksheet

Wilcom EmbroideryStudio - Designing

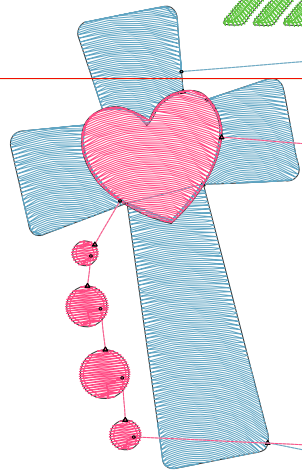
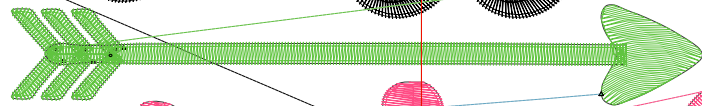


Design: 6

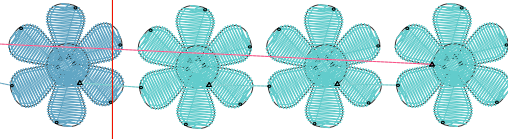
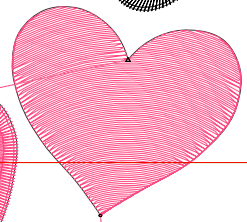
Title:

Stitches: 16,996
Height: 5.52 in
Width: 6.51 in
Colors: 5
Colorway: Colorway 1
Zoom: 1:1

Blessed



Yale



1

1

2

2

Production Worksheet

Wilcom EmbroideryStudio - Designing



Design: **6**

Title:

Stitches: 16,996
 Height: 5.52 in
 Width: 6.51 in
 Colors: 5
 Colorway: Colorway 1
 Zoom: 1:1

Machine format: Tajima
 Color changes: 4
 Stops: 5
 Trims: 45
 Appliqués: 0
 Left: 87.7 mm
 Right: 77.7 mm
 Up: 78.9 mm
 Down: 61.3 mm
 EndX: 0.00 in
 EndY: 0.00 in
 Area 35.95 in²
 Max stitch: 9.3 mm
 Min stitch: 0.0 mm
 Max jump: 7.0 mm
 Total thread: 399.20ft
 Total bobbin: 169.50ft

Stop Sequence:

#	N#	Color	St.	Code	Name	Chart
1.	8		6,173	8	Black	Default
2.	2		1,150		R96 G196 B63	
3.	1		2,431		R97 G166 B196	
4.	3		1,425		R98 G204 B204	
5.	4		5,815		R255 G75 B132	

Production Worksheet

Wilcom EmbroideryStudio - Designing

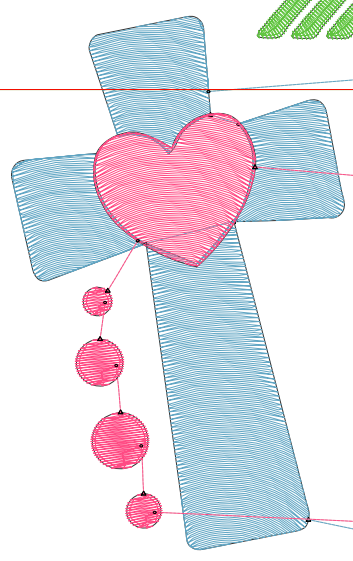
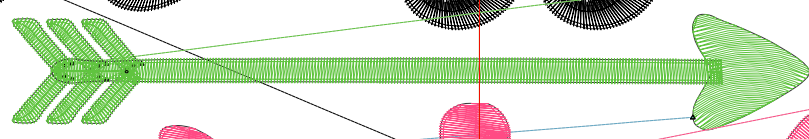


Design: 7

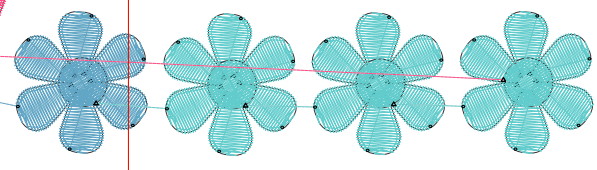
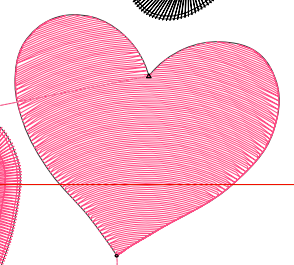
Title:

Stitches: 20,070
Height: 6.37 in
Width: 7.51 in
Colors: 5
Colorway: Colorway 1
Zoom: 1:1

Blessed



Y'all



Production Worksheet

Wilcom EmbroideryStudio - Designing



Design: **7**

Title:

Stitches: 20,070
 Height: 6.37 in
 Width: 7.51 in
 Colors: 5
 Colorway: Colorway 1
 Zoom: 1:1

Machine format: Tajima
 Color changes: 4
 Stops: 5
 Trims: 47
 Appliqués: 0
 Left: 100.4 mm
 Right: 90.4 mm
 Up: 89.7 mm
 Down: 72.0 mm
 EndX: 0.00 in
 EndY: 0.00 in
 Area 47.84 in²
 Max stitch: 10.7 mm
 Min stitch: 0.1 mm
 Max jump: 6.9 mm
 Total thread: 511.36ft
 Total bobbin: 224.02ft

Stop Sequence:

#	N#	Color	St.	Code	Name	Chart
1.	8		7,198	8	Black	Default
2.	2		1,383		R96 G196 B63	
3.	1		3,001		R97 G166 B196	
4.	3		1,565		R98 G204 B204	
5.	4		6,921		R255 G75 B132	