

# Production Worksheet

Wilcom EmbroideryStudio - Designing



Design: **3**

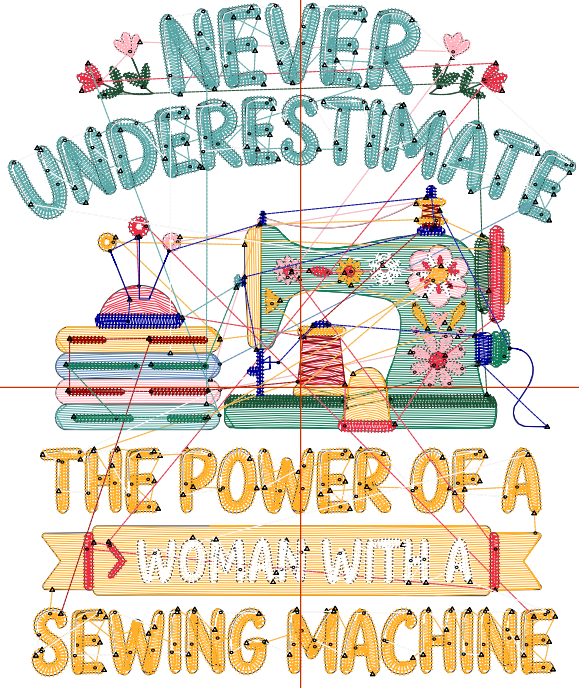
Title:

Stitches: 15,835  
 Height: 3.51 in  
 Width: 2.96 in  
 Colors: 10  
 Colorway: Colorway 1  
 Zoom: 1:1

Machine format: Tajima  
 Color changes: 12  
 Stops: 13  
 Trims: 244  
 Appliqués: 0  
 Left: 38.7 mm  
 Right: 36.4 mm  
 Up: 50.8 mm  
 Down: 38.3 mm  
 EndX: 0.00 in  
 EndY: 0.00 in  
 Area: 10.37 in<sup>2</sup>  
 Max stitch: 10.4 mm  
 Min stitch: 0.0 mm  
 Max jump: 7.0 mm  
 Total thread: 206.63ft  
 Total bobbin: 58.35ft

Stop Sequence:

#	N#	Color	St.	Code	Name	Chart
1.	2		848		R15 G125 B88	
2.	3		588		R27 G79 B49	
3.	1		972		R255 G180 B191	
4.	4		5,456		R255 G176 B40	
5.	5		1,013		R235 G43 B66	
6.	6		3,450		R89 G168 B167	
7.	7		115		R92 G137 B189	
8.	9		2,388	9	White	Default
9.	11		315	11	Dark Red	Default
10.	10		402	10	Dark Blue	Default
11.	6		22		R89 G168 B167	
12.	2		226		R15 G125 B88	
13.	4		38		R255 G176 B40	



# Production Worksheet

Wilcom EmbroideryStudio - Designing



Design: **4**

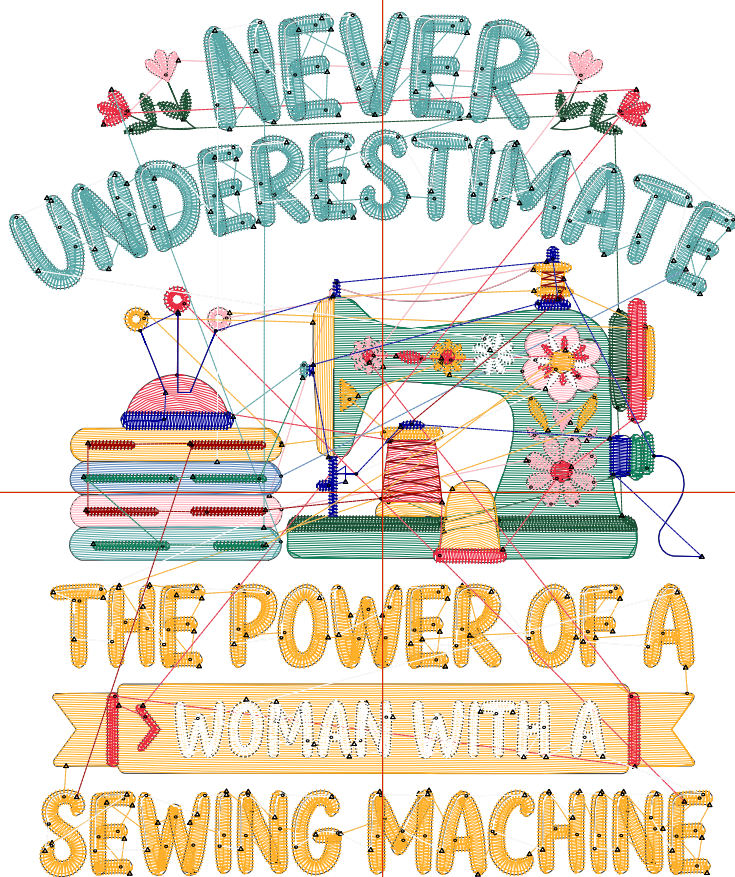
Title:

Stitches: 20,091  
 Height: 4.51 in  
 Width: 3.80 in  
 Colors: 10  
 Colorway: Colorway 1  
 Zoom: 1:1

Machine format: Tajima  
 Color changes: 12  
 Stops: 13  
 Trims: 250  
 Appliqués: 0  
 Left: 49.4 mm  
 Right: 47.1 mm  
 Up: 63.5 mm  
 Down: 51.0 mm  
 EndX: 0.00 in  
 EndY: 0.00 in  
 Area: 17.13 in<sup>2</sup>  
 Max stitch: 9.3 mm  
 Min stitch: 0.0 mm  
 Max jump: 6.9 mm  
 Total thread: 285.54ft  
 Total bobbin: 88.56ft

Stop Sequence:

#	N#	Color	St.	Code	Name	Chart
1.	2		1,212	R15	G125 B88	
2.	3		725	R27	G79 B49	
3.	1		1,258	R255	G180 B191	
4.	4		7,060	R255	G176 B40	
5.	5		1,287	R235	G43 B66	
6.	6		4,349	R89	G168 B167	
7.	7		165	R92	G137 B189	
8.	9		2,802	9	White	Default
9.	11		385	11	Dark Red	Default
10.	10		489	10	Dark Blue	Default
11.	6		29	R89	G168 B167	
12.	2		283	R15	G125 B88	
13.	4		45	R255	G176 B40	



# Production Worksheet

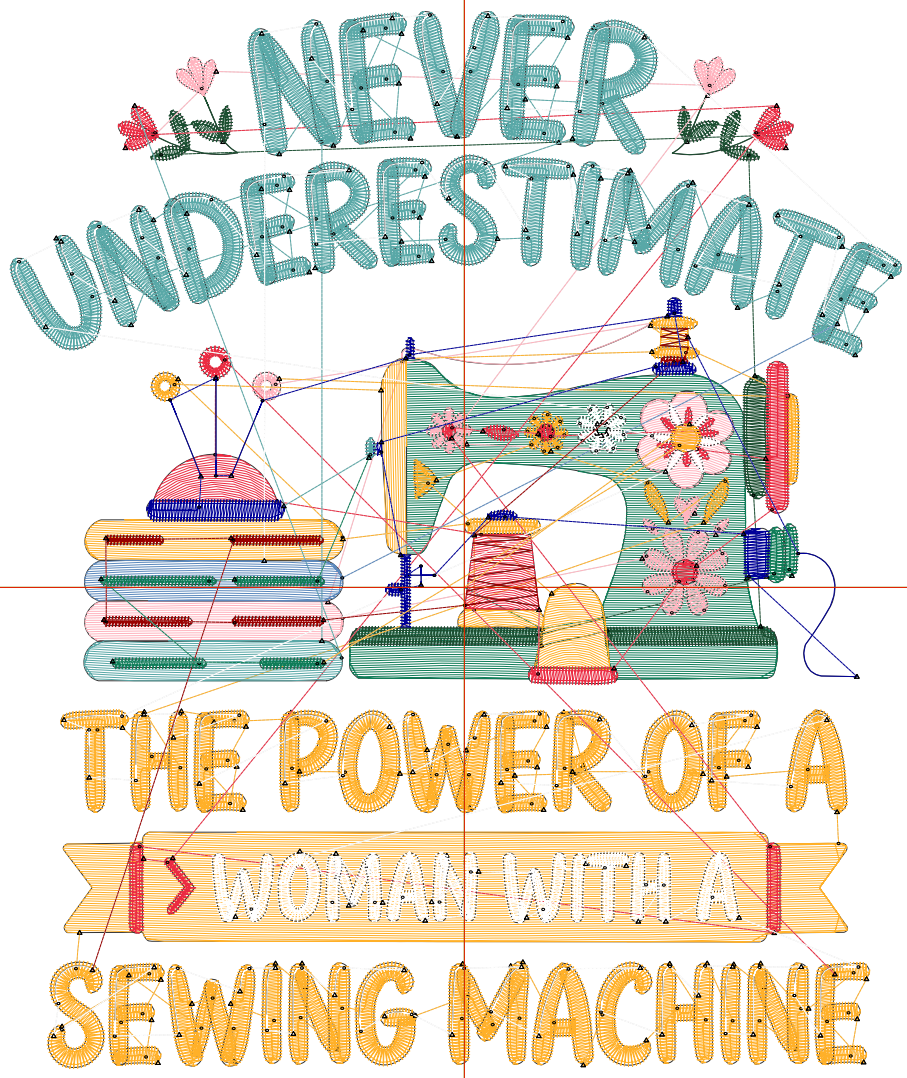
Wilcom EmbroideryStudio - Designing



Design: **5**

Title:

Stitches: 24,460  
 Height: 5.51 in  
 Width: 4.64 in  
 Colors: 10  
 Colorway: Colorway 1  
 Zoom: 1:1



Machine format: Tajima  
 Color changes: 12  
 Stops: 13  
 Trims: 270  
 Appliqués: 0  
 Left: 60.1 mm  
 Right: 57.8 mm  
 Up: 76.2 mm  
 Down: 63.7 mm  
 EndX: 0.00 in  
 EndY: 0.00 in  
 Area: 25.57 in<sup>2</sup>  
 Max stitch: 11.5 mm  
 Min stitch: 0.0 mm  
 Max jump: 7.0 mm  
 Total thread: 376.94ft  
 Total bobbin: 125.73ft

Stop Sequence:

#	N#	Color	St.	Code	Name	Chart
1.	2		1,659	R15	G125 B88	
2.	3		843	R27	G79 B49	
3.	1		1,519	R255	G180 B191	
4.	4		8,747	R255	G176 B40	
5.	5		1,557	R235	G43 B66	
6.	6		5,203	R89	G168 B167	
7.	7		224	R92	G137 B189	
8.	9		3,265	9	White	Default
9.	11		443	11	Dark Red	Default
10.	10		578	10	Dark Blue	Default
11.	6		35	R89	G168 B167	
12.	2		329	R15	G125 B88	
13.	4		56	R255	G176 B40	

# Production Worksheet

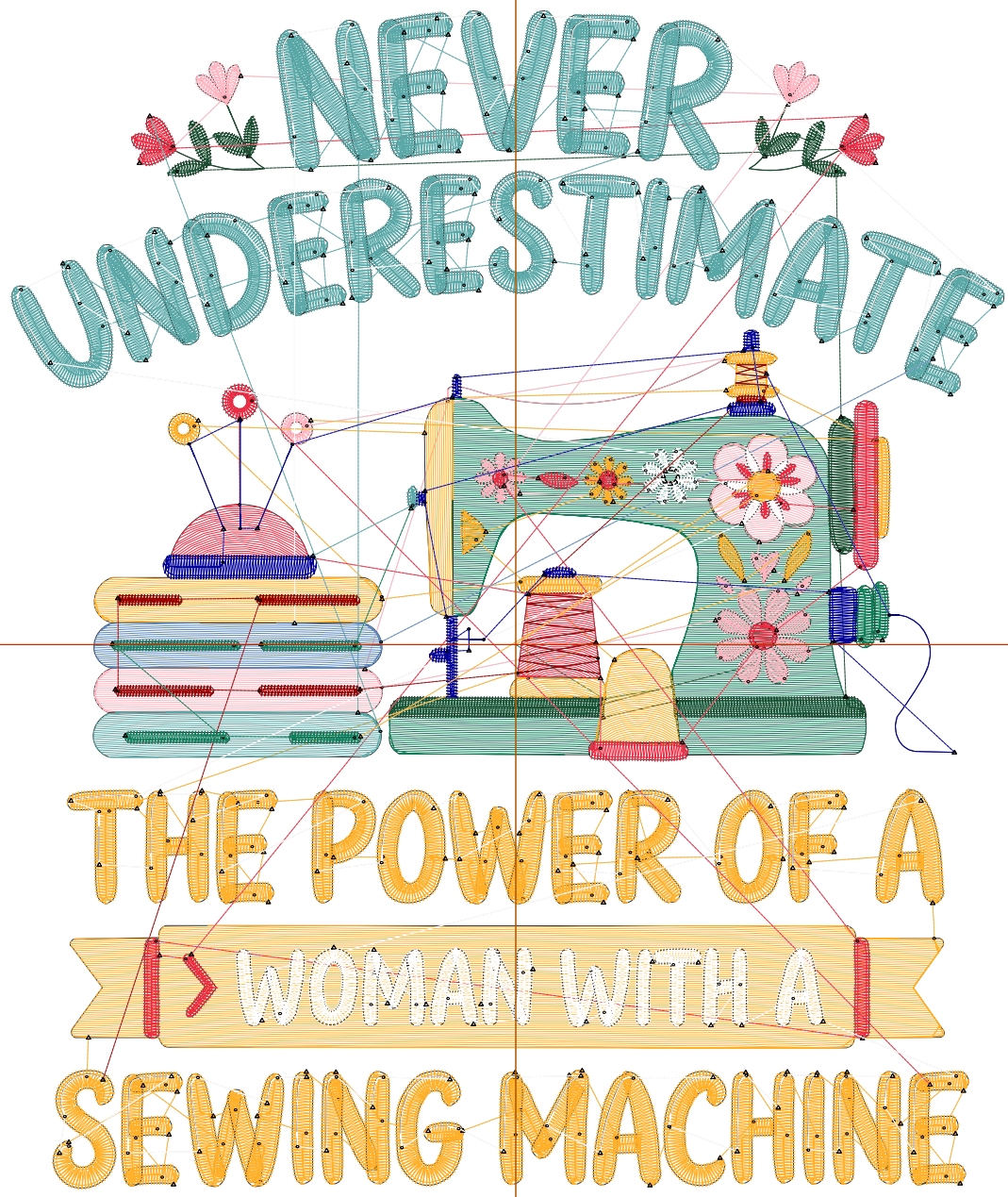
Wilcom EmbroideryStudio - Designing



Design: 6

Title:

Stitches: 29,296  
Height: 6.51 in  
Width: 5.49 in  
Colors: 10  
Colorway: Colorway 1  
Zoom: 1:1



# Production Worksheet

Wilcom EmbroideryStudio - Designing



Design: **6**

Title:

Stitches: 29,296  
 Height: 6.51 in  
 Width: 5.49 in  
 Colors: 10  
 Colorway: Colorway 1  
 Zoom: 1:1

Machine format: Tajima  
 Color changes: 12  
 Stops: 13  
 Trims: 272  
 Appliqués: 0  
 Left: 70.8 mm  
 Right: 68.5 mm  
 Up: 88.9 mm  
 Down: 76.4 mm  
 EndX: 0.00 in  
 EndY: 0.00 in  
 Area 35.71 in<sup>2</sup>  
 Max stitch: 7.4 mm  
 Min stitch: 0.0 mm  
 Max jump: 7.0 mm  
 Total thread: 484.76ft  
 Total bobbin: 170.82ft

Stop Sequence:

#	N#	Color	St.	Code	Name	Chart
1.	2		2,190		R15 G125 B88	
2.	3		997		R27 G79 B49	
3.	1		1,844		R255 G180 B191	
4.	4		10,562		R255 G176 B40	
5.	5		1,877		R235 G43 B66	
6.	6		6,179		R89 G168 B167	
7.	7		298		R92 G137 B189	
8.	9		3,687	9	White	Default
9.	11		506	11	Dark Red	Default
10.	10		664	10	Dark Blue	Default
11.	6		38		R89 G168 B167	
12.	2		387		R15 G125 B88	
13.	4		65		R255 G176 B40	

# Production Worksheet

Wilcom EmbroideryStudio - Designing

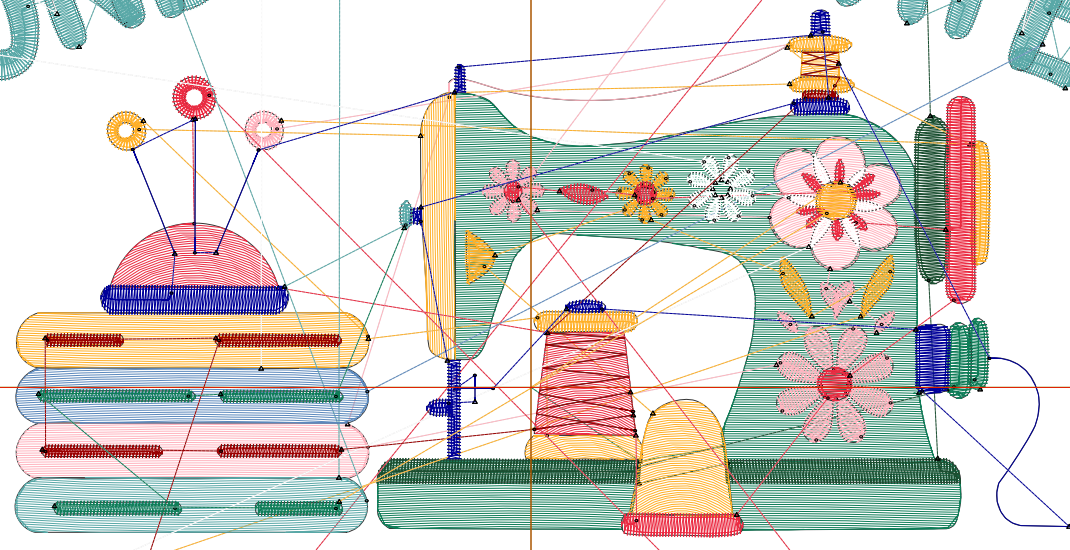


Design: 7

Title:

Stitches: 34,145  
Height: 7.51 in  
Width: 6.33 in  
Colors: 10  
Colorway: Colorway 1  
Zoom: 1:1

NEVER UNDERESTIMATE



THE POWER OF A  
WOMAN WITH A  
SEWING MACHINE

# Production Worksheet

Wilcom EmbroideryStudio - Designing



Design: **7**

Title:

Stitches: 34,145  
 Height: 7.51 in  
 Width: 6.33 in  
 Colors: 10  
 Colorway: Colorway 1  
 Zoom: 1:1

Machine format: Tajima  
 Color changes: 12  
 Stops: 13  
 Trims: 275  
 Appliqués: 0  
 Left: 81.5 mm  
 Right: 79.3 mm  
 Up: 101.6 mm  
 Down: 89.1 mm  
 EndX: 0.00 in  
 EndY: 0.00 in  
 Area 47.52 in<sup>2</sup>  
 Max stitch: 8.6 mm  
 Min stitch: 0.0 mm  
 Max jump: 6.9 mm  
 Total thread: 603.19ft  
 Total bobbin: 222.15ft

Stop Sequence:

#	N#	Color	St.	Code	Name	Chart
1.	2		2,734		R15 G125 B88	
2.	3		1,141		R27 G79 B49	
3.	1		2,167		R255 G180 B191	
4.	4		12,460		R255 G176 B40	
5.	5		2,171		R235 G43 B66	
6.	6		7,118		R89 G168 B167	
7.	7		379		R92 G137 B189	
8.	9		4,091	9	White	Default
9.	11		583	11	Dark Red	Default
10.	10		738	10	Dark Blue	Default
11.	6		43		R89 G168 B167	
12.	2		450		R15 G125 B88	
13.	4		68		R255 G176 B40	