

# Production Worksheet

Wilcom EmbroideryStudio - Designing



Design: **3**

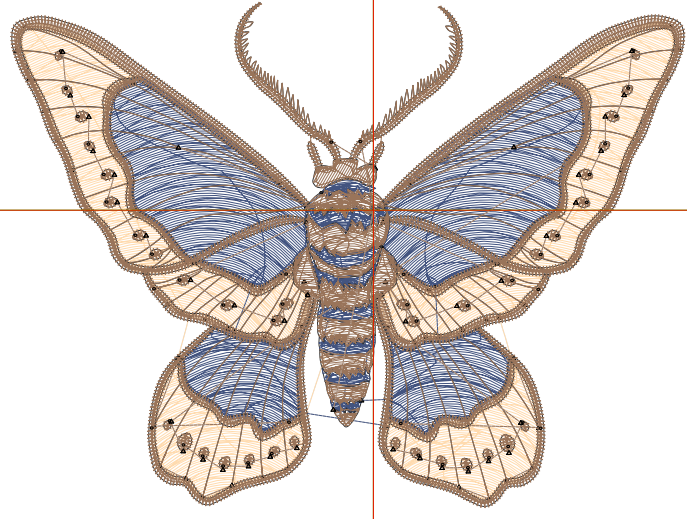
Title:

Stitches: 15,209  
Height: 2.63 in  
Width: 3.51 in  
Colors: 3  
Colorway: Colorway 1  
Zoom: 1:1

Machine format: Tajima  
Color changes: 2  
Stops: 3  
Trims: 81  
Appliqués: 0  
Left: 48.0 mm  
Right: 41.2 mm  
Up: 27.5 mm  
Down: 39.4 mm  
EndX: 0.00 in  
EndY: 0.00 in  
Area 9.25 in<sup>2</sup>  
Max stitch: 10.9 mm  
Min stitch: 0.0 mm  
Max jump: 6.9 mm  
Total thread: 198.11ft  
Total bobbin: 57.68ft

Stop Sequence:

#	N#	Color	St.	Code	Name	Chart
1.	2		3,689	R255	G219 B175	
2.	3		4,093	R67	G84 B128	
3.	1		7,425	R153	G116 B90	



# Production Worksheet

Wilcom EmbroideryStudio - Designing



Design: **4**

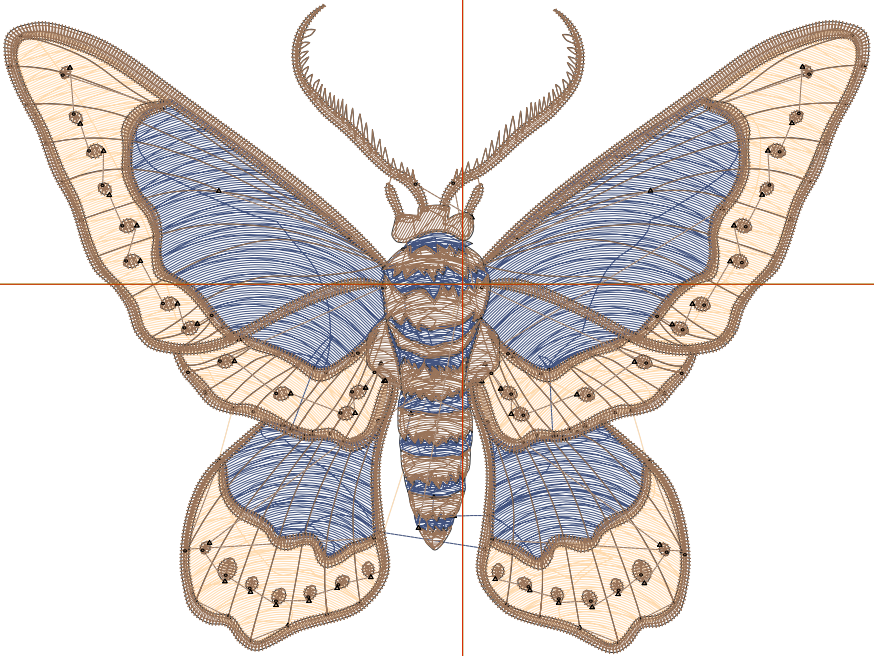
Title:

Stitches: 20,923  
 Height: 3.38 in  
 Width: 4.51 in  
 Colors: 3  
 Colorway: Colorway 1  
 Zoom: 1:1

Machine format: Tajima  
 Color changes: 2  
 Stops: 3  
 Trims: 93  
 Appliqués: 0  
 Left: 60.7 mm  
 Right: 53.9 mm  
 Up: 37.0 mm  
 Down: 48.9 mm  
 EndX: 0.00 in  
 EndY: 0.00 in  
 Area 15.27 in<sup>2</sup>  
 Max stitch: 7.8 mm  
 Min stitch: 0.0 mm  
 Max jump: 6.8 mm  
 Total thread: 287.01ft  
 Total bobbin: 88.14ft

Stop Sequence:

#	N#	Color	St.	Code	Name	Chart
1.	2		5,492	R255	G219 B175	
2.	3		5,973	R67	G84 B128	
3.	1		9,456	R153	G116 B90	



# Production Worksheet

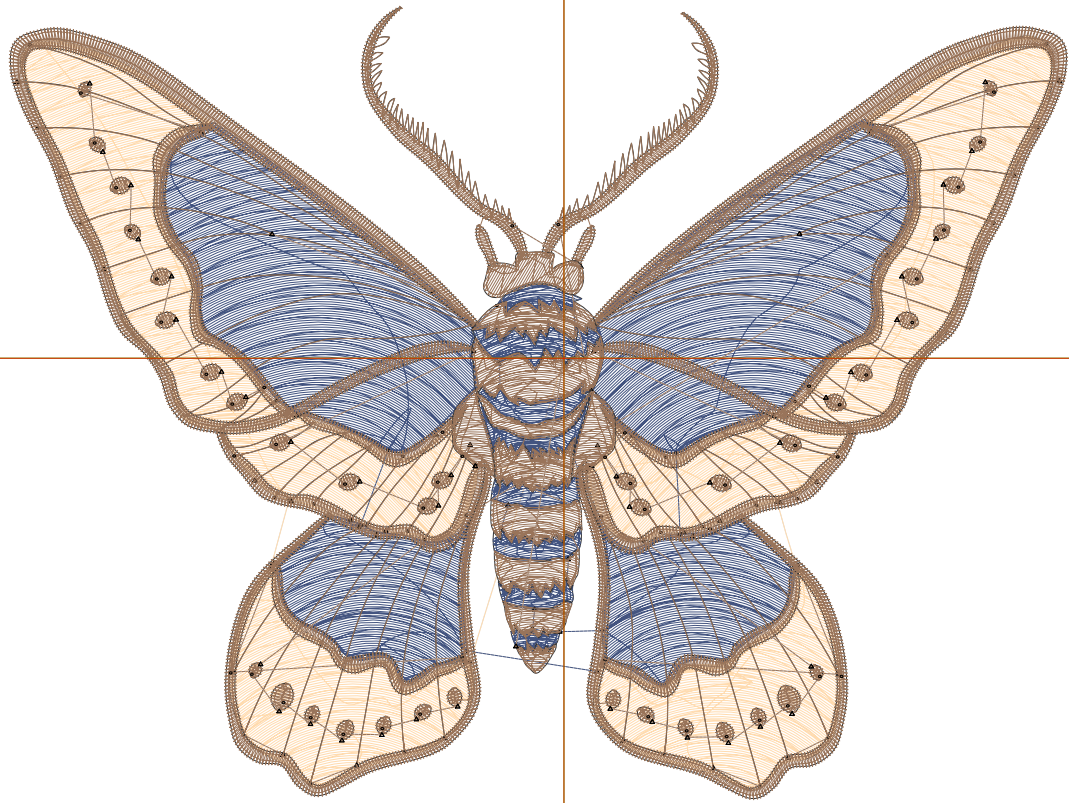
Wilcom EmbroideryStudio - Designing



Design: **5**

Title:

Stitches: 27,158  
Height: 4.13 in  
Width: 5.51 in  
Colors: 3  
Colorway: Colorway 1  
Zoom: 1:1



1

1

2

2

# Production Worksheet

Wilcom EmbroideryStudio - Designing



Design: **5**

Title:

Stitches: 27,158  
 Height: 4.13 in  
 Width: 5.51 in  
 Colors: 3  
 Colorway: Colorway 1  
 Zoom: 1:1

Machine format: Tajima  
 Color changes: 2  
 Stops: 3  
 Trims: 95  
 Appliqués: 0  
 Left: 73.4 mm  
 Right: 66.6 mm  
 Up: 46.6 mm  
 Down: 58.4 mm  
 EndX: 0.00 in  
 EndY: 0.00 in  
 Area 22.78 in<sup>2</sup>  
 Max stitch: 9.7 mm  
 Min stitch: 0.0 mm  
 Max jump: 7.0 mm  
 Total thread: 389.55ft  
 Total bobbin: 124.66ft

Stop Sequence:

#	N#	Color	St.	Code	Name	Chart
1.	2		7,531		R255 G219 B175	
2.	3		8,143		R67 G84 B128	
3.	1		11,482		R153 G116 B90	

# Production Worksheet

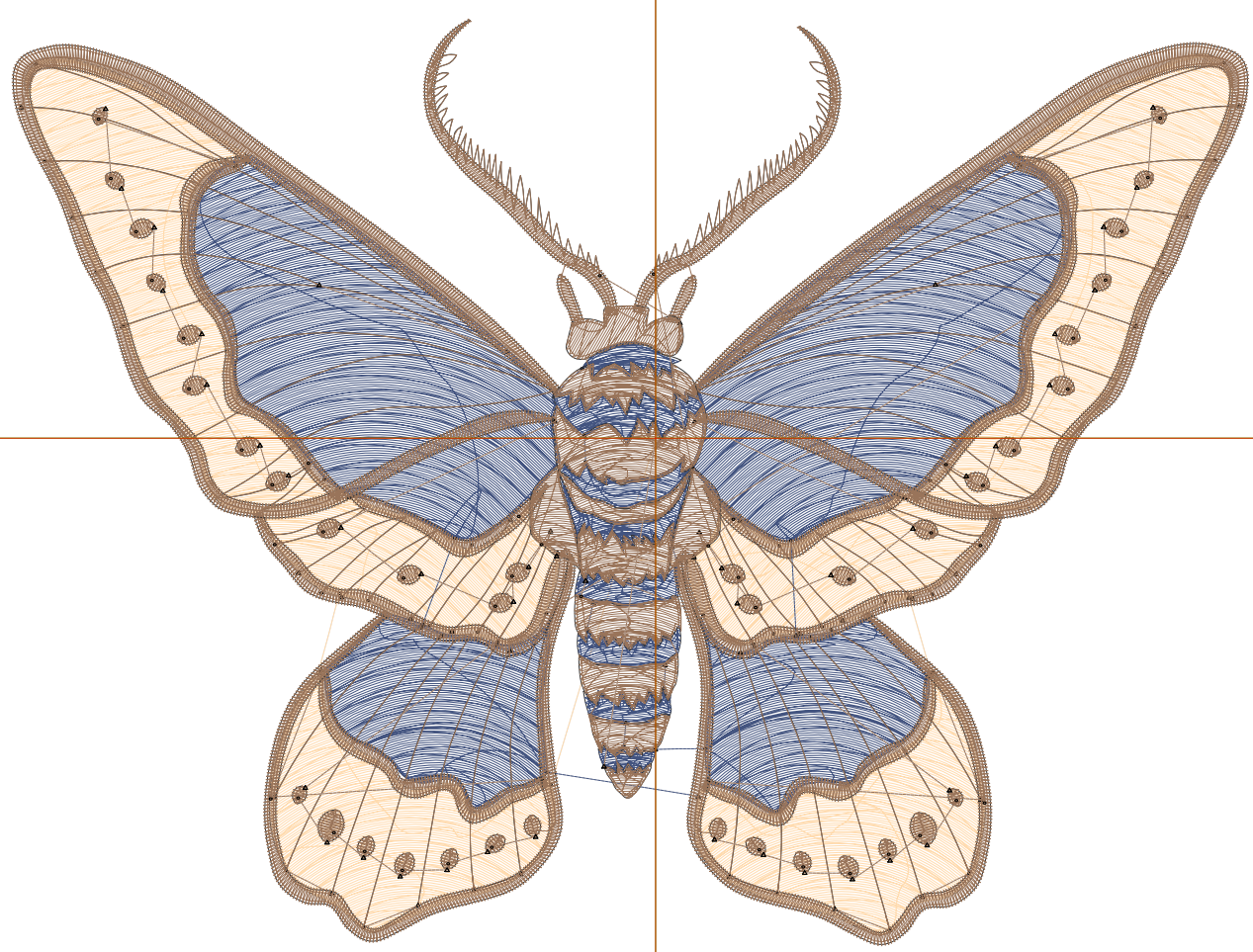
Wilcom EmbroideryStudio - Designing



Design: **6**

Title:

Stitches: 34,084  
Height: 4.88 in  
Width: 6.51 in  
Colors: 3  
Colorway: Colorway 1  
Zoom: 1:1



# Production Worksheet

Wilcom EmbroideryStudio - Designing



Design: **6**

Title:

Stitches: 34,084  
 Height: 4.88 in  
 Width: 6.51 in  
 Colors: 3  
 Colorway: Colorway 1  
 Zoom: 1:1

Machine format: Tajima  
 Color changes: 2  
 Stops: 3  
 Trims: 99  
 Appliqués: 0  
 Left: 86.1 mm  
 Right: 79.3 mm  
 Up: 56.1 mm  
 Down: 67.9 mm  
 EndX: 0.00 in  
 EndY: 0.00 in  
 Area 31.80 in<sup>2</sup>  
 Max stitch: 7.4 mm  
 Min stitch: 0.0 mm  
 Max jump: 6.7 mm  
 Total thread: 507.45ft  
 Total bobbin: 167.59ft

Stop Sequence:

#	N#	Color	St.	Code	Name	Chart
1.	2		9,896		R255 G219 B175	
2.	3		10,625		R67 G84 B128	
3.	1		13,561		R153 G116 B90	

# Production Worksheet

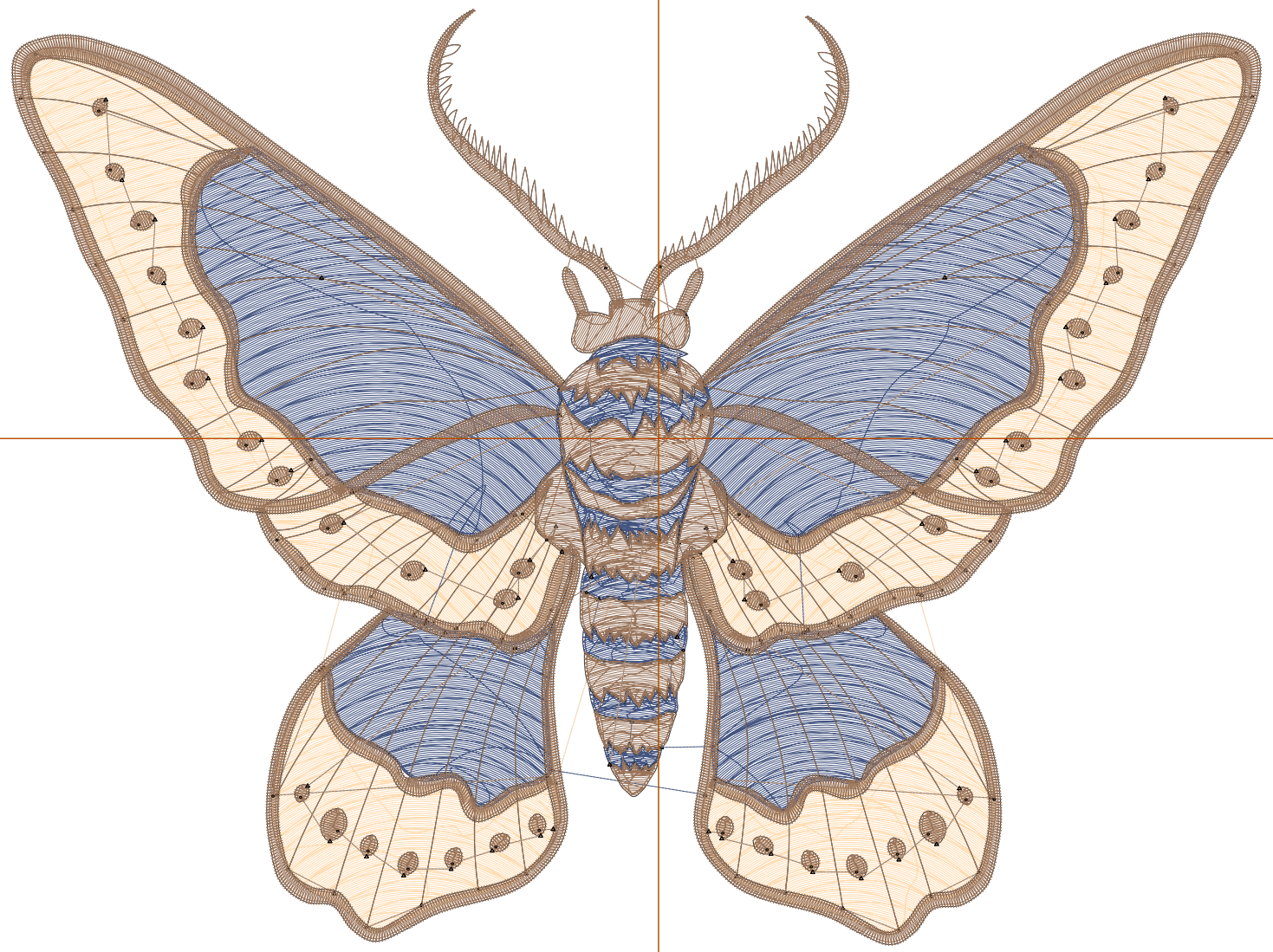
Wilcom EmbroideryStudio - Designing



Design: **7**

Title:

Stitches: 41,747  
Height: 5.63 in  
Width: 7.51 in  
Colors: 3  
Colorway: Colorway 1  
Zoom: 1:1



# Production Worksheet

Wilcom EmbroideryStudio - Designing



Design: **7**

Title:

Stitches: 41,747  
 Height: 5.63 in  
 Width: 7.51 in  
 Colors: 3  
 Colorway: Colorway 1  
 Zoom: 1:1

Machine format: Tajima  
 Color changes: 2  
 Stops: 3  
 Trims: 103  
 Appliqués: 0  
 Left: 98.8 mm  
 Right: 92.0 mm  
 Up: 65.6 mm  
 Down: 77.4 mm  
 EndX: 0.00 in  
 EndY: 0.00 in  
 Area 42.31 in<sup>2</sup>  
 Max stitch: 7.8 mm  
 Min stitch: 0.0 mm  
 Max jump: 6.9 mm  
 Total thread: 640.62ft  
 Total bobbin: 216.71ft

Stop Sequence:

#	N#	Color	St.	Code	Name	Chart
1.	2		12,591		R255 G219 B175	
2.	3		13,482		R67 G84 B128	
3.	1		15,672		R153 G116 B90	