

Production Worksheet

Wilcom EmbroideryStudio - Designing



Design: **3**

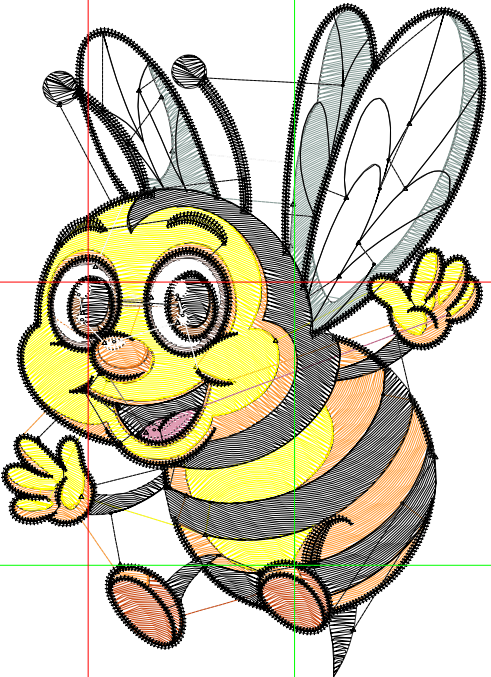
Title:

Stitches: 16,170
 Height: 3.51 in
 Width: 2.53 in
 Colors: 11
 Colorway: Colorway 1
 Zoom: 1:1

Machine format: Tajima
 Color changes: 11
 Stops: 12
 Trims: 69
 Appliqués: 0
 Left: 38.8 mm
 Right: 25.3 mm
 Up: 74.3 mm
 Down: 14.7 mm
 EndX: -1.08 in
 EndY: 1.47 in
 Area: 8.85 in²
 Max stitch: 10.9 mm
 Min stitch: 0.0 mm
 Max jump: 6.7 mm
 Total thread: 206.01ft
 Total bobbin: 56.87ft

Stop Sequence:

#	N#	Color	St.	Code	Name	Chart
1.	2		327		R201 G70 B14	
2.	12		2,093	12	Orange	Default
3.	1		100		R237 G118 B27	
4.	4		2,224	4	Yellow	Default
5.	3		70		R191 G89 B128	
6.	6		85		R224 G156 B179	
7.	5		356		R128 G101 B91	
8.	7		210		R148 G82 B32	
9.	9		2,031	9	White	Default
10.	10		1,105		R137 G158 B153	
11.	8		7,415	8	Black	Default
12.	9		152	9	White	Default



Production Worksheet

Wilcom EmbroideryStudio - Designing



Design: **4**

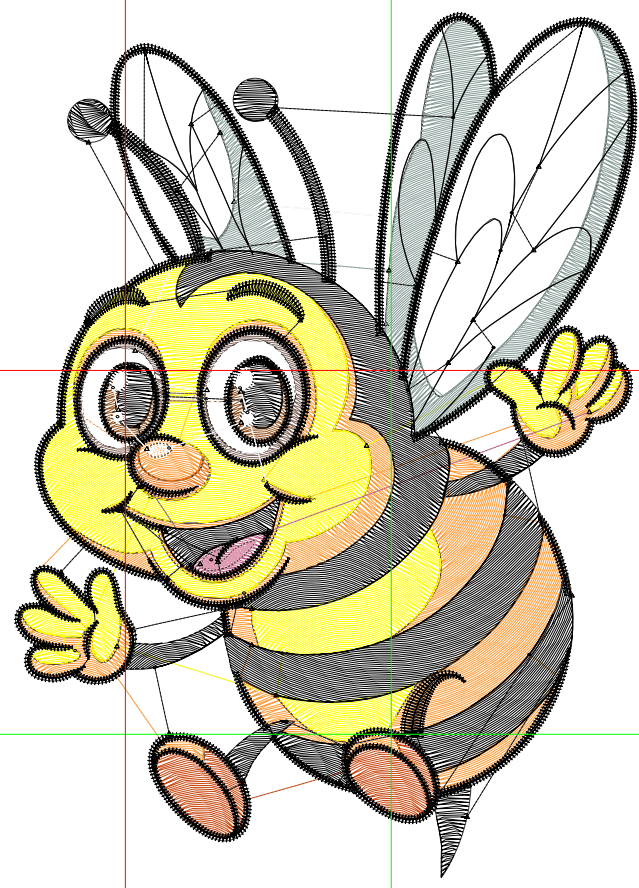
Title:

Stitches: 22,368
 Height: 4.51 in
 Width: 3.24 in
 Colors: 11
 Colorway: Colorway 1
 Zoom: 1:1

Machine format: Tajima
 Color changes: 11
 Stops: 12
 Trims: 73
 Appliqués: 0
 Left: 49.8 mm
 Right: 32.5 mm
 Up: 95.5 mm
 Down: 18.9 mm
 EndX: -1.38 in
 EndY: 1.90 in
 Area: 14.61 in²
 Max stitch: 7.8 mm
 Min stitch: 0.0 mm
 Max jump: 6.9 mm
 Total thread: 298.98ft
 Total bobbin: 87.86ft

Stop Sequence:

#	N#	Color	St.	Code	Name	Chart
1.	2		455		R201 G70 B14	
2.	12		2,901	12	Orange	Default
3.	1		131		R237 G118 B27	
4.	4		3,287	4	Yellow	Default
5.	3		103		R191 G89 B128	
6.	6		103		R224 G156 B179	
7.	5		515		R128 G101 B91	
8.	7		282		R148 G82 B32	
9.	9		3,085	9	White	Default
10.	10		1,601		R137 G158 B153	
11.	8		9,723	8	Black	Default
12.	9		180	9	White	Default



Production Worksheet

Wilcom EmbroideryStudio - Designing



Design: **5**

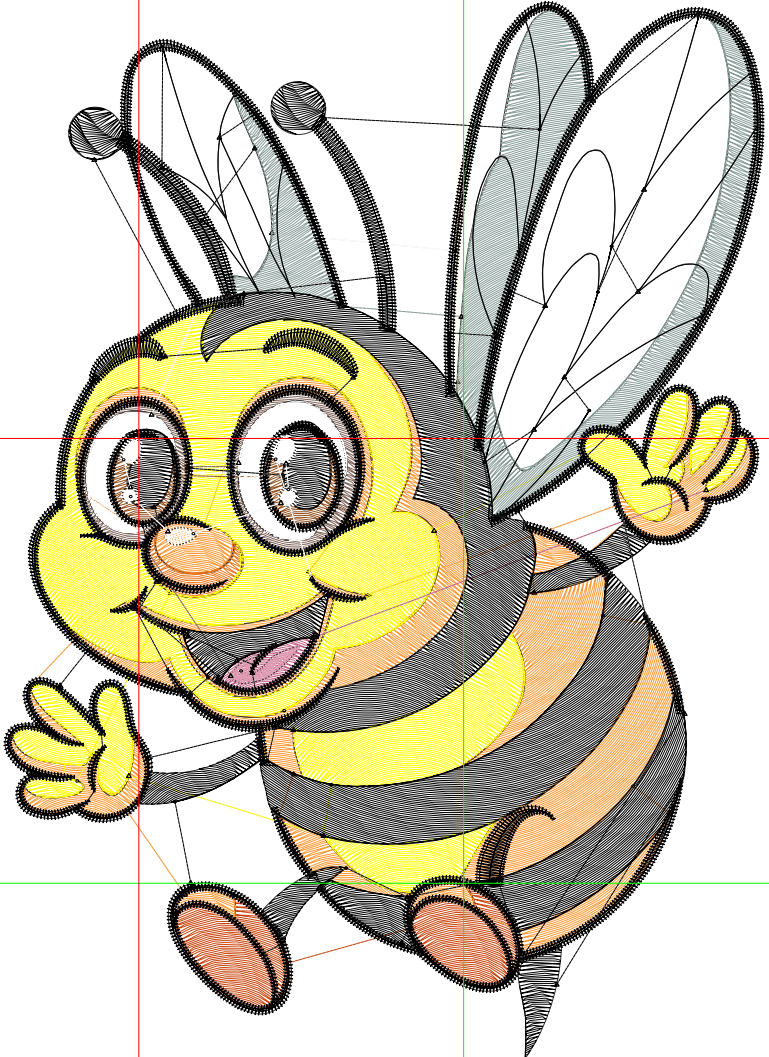
Title:

Stitches: 29,457
 Height: 5.51 in
 Width: 3.96 in
 Colors: 11
 Colorway: Colorway 1
 Zoom: 1:1

Machine format: Tajima
 Color changes: 11
 Stops: 12
 Trims: 78
 Appliqués: 0
 Left: 60.8 mm
 Right: 39.8 mm
 Up: 116.7 mm
 Down: 23.2 mm
 EndX: -1.69 in
 EndY: 2.32 in
 Area: 21.81 in²
 Max stitch: 9.5 mm
 Min stitch: 0.0 mm
 Max jump: 6.7 mm
 Total thread: 408.89ft
 Total bobbin: 125.43ft

Stop Sequence:

#	N#	Color	St.	Code	Name	Chart
1.	2		647		R201 G70 B14	
2.	12		3,840	12	Orange	Default
3.	1		180		R237 G118 B27	
4.	4		4,529	4	Yellow	Default
5.	3		141		R191 G89 B128	
6.	6		122		R224 G156 B179	
7.	5		651		R128 G101 B91	
8.	7		342		R148 G82 B32	
9.	9		4,338	9	White	Default
10.	10		2,212		R137 G158 B153	
11.	8		12,250	8	Black	Default
12.	9		203	9	White	Default



Production Worksheet

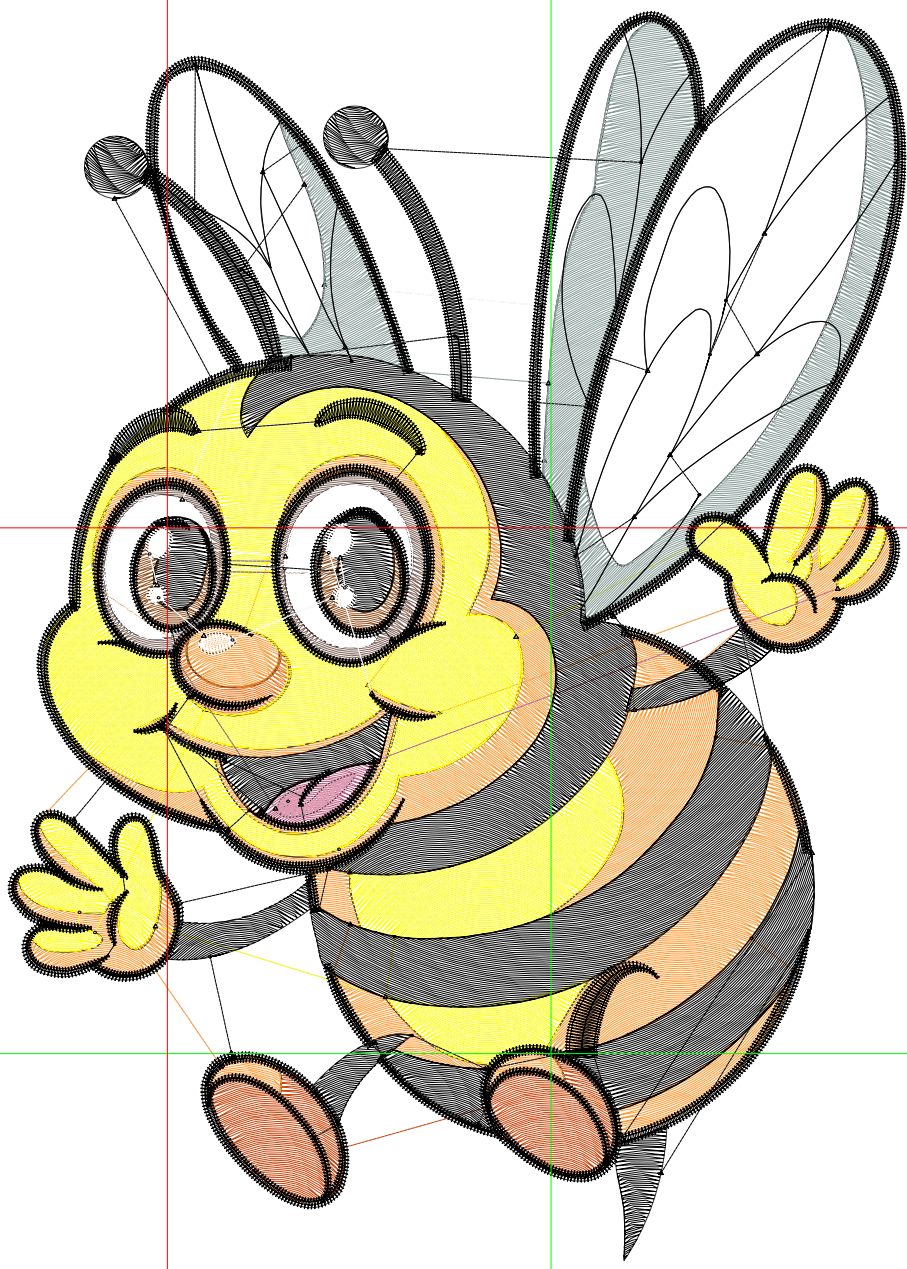
Wilcom EmbroideryStudio - Designing



Design: **6**

Title:

Stitches: 37,882
 Height: 6.50 in
 Width: 4.68 in
 Colors: 11
 Colorway: Colorway 1
 Zoom: 1:1



Machine format: Tajima
 Color changes: 11
 Stops: 12
 Trims: 85
 Appliqués: 0
 Left: 71.9 mm
 Right: 47.0 mm
 Up: 137.9 mm
 Down: 27.3 mm
 EndX: -2.00 in
 EndY: 2.74 in
 Area: 30.41 in²
 Max stitch: 11.2 mm
 Min stitch: 0.0 mm
 Max jump: 6.9 mm
 Total thread: 540.43ft
 Total bobbin: 170.62ft

Stop Sequence:

#	N#	Color	St.	Code	Name	Chart
1.	2		835		R201 G70 B14	
2.	12		5,231	12	Orange	Default
3.	1		215		R237 G118 B27	
4.	4		6,067	4	Yellow	Default
5.	3		177		R191 G89 B128	
6.	6		140		R224 G156 B179	
7.	5		790		R128 G101 B91	
8.	7		431		R148 G82 B32	
9.	9		5,794	9	White	Default
10.	10		2,957		R137 G158 B153	
11.	8		15,014	8	Black	Default
12.	9		229	9	White	Default

Production Worksheet

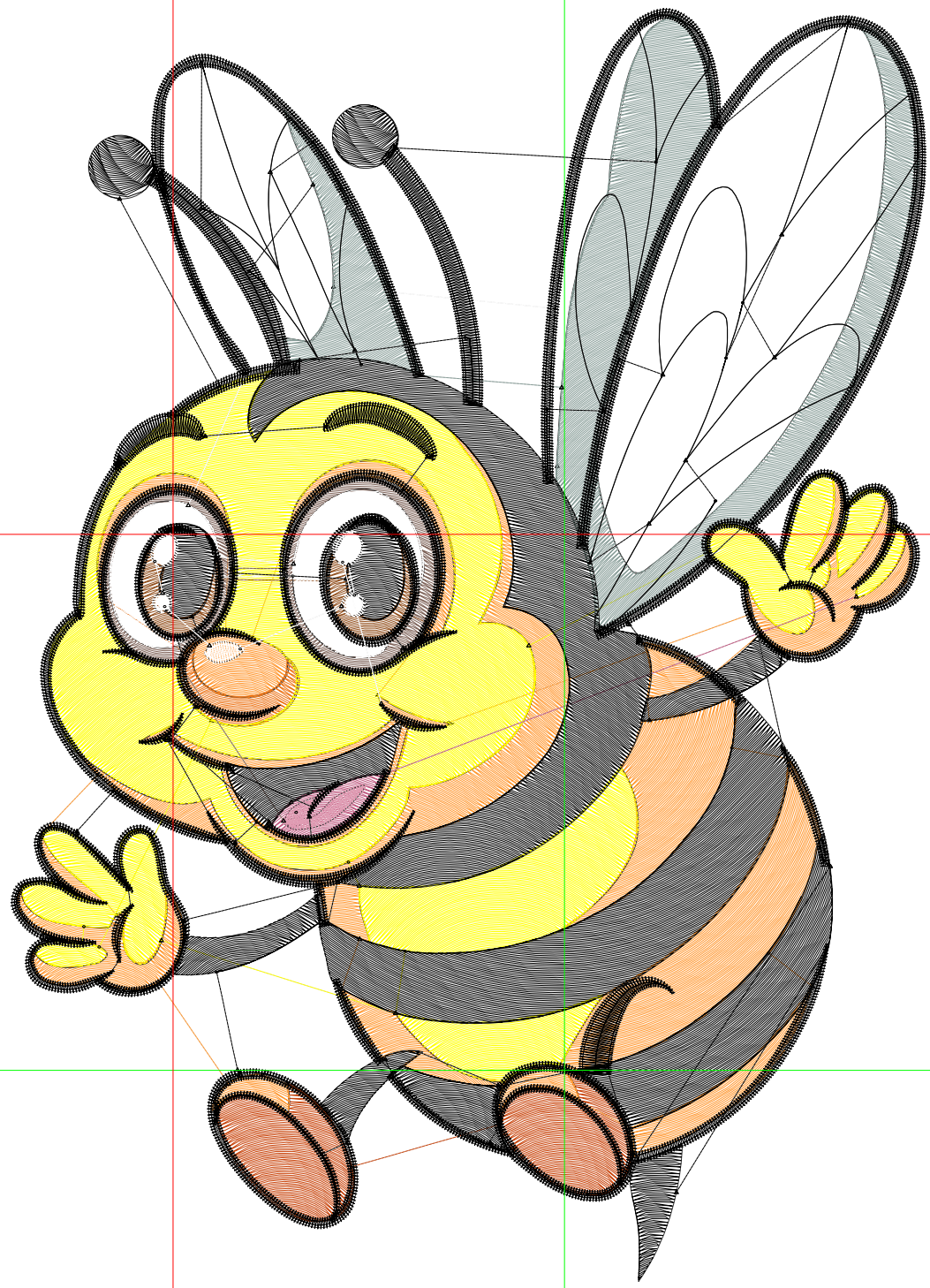
Wilcom EmbroideryStudio - Designing



Design: **7**

Title:

Stitches: 46,460
Height: 7.50 in
Width: 5.40 in
Colors: 11
Colorway: Colorway 1
Zoom: 1:1



Production Worksheet

Wilcom EmbroideryStudio - Designing



Design: **7**

Title:

Stitches: 46,460
 Height: 7.50 in
 Width: 5.40 in
 Colors: 11
 Colorway: Colorway 1
 Zoom: 1:1

Machine format: Tajima
 Color changes: 11
 Stops: 12
 Trims: 86
 Appliqués: 0
 Left: 82.9 mm
 Right: 54.2 mm
 Up: 159.0 mm
 Down: 31.4 mm
 EndX: -2.31 in
 EndY: 3.16 in
 Area 40.47 in²
 Max stitch: 11.0 mm
 Min stitch: 0.0 mm
 Max jump: 7.0 mm
 Total thread: 683.69ft
 Total bobbin: 222.16ft

Stop Sequence:

#	N#	Color	St.	Code	Name	Chart
1.	2		1,102		R201 G70 B14	
2.	12		6,110	12	Orange	Default
3.	1		277		R237 G118 B27	
4.	4		7,658	4	Yellow	Default
5.	3		218		R191 G89 B128	
6.	6		159		R224 G156 B179	
7.	5		955		R128 G101 B91	
8.	7		528		R148 G82 B32	
9.	9		7,513	9	White	Default
10.	10		3,747		R137 G158 B153	
11.	8		17,933	8	Black	Default
12.	9		258	9	White	Default