

# Production Worksheet

Wilcom EmbroideryStudio - Designing



Design: **3**

Title:

Stitches: 20,010  
 Height: 3.48 in  
 Width: 2.74 in  
 Colors: 14  
 Colorway: Colorway 1  
 Zoom: 1:1

Machine format: Tajima  
 Color changes: 13  
 Stops: 14  
 Trims: 100  
 Appliqués: 0  
 Left: 39.7 mm  
 Right: 29.8 mm  
 Up: 26.0 mm  
 Down: 62.5 mm  
 EndX: 0.00 in  
 EndY: 0.00 in  
 Area 9.53 in<sup>2</sup>  
 Max stitch: 9.4 mm  
 Min stitch: 0.0 mm  
 Max jump: 7.0 mm  
 Total thread: 223.66ft  
 Total bobbin: 52.01ft

Stop Sequence:

#	N#	Color	St.	Code	Name	Chart
1.	1		1,538		R255 G186 B26	
2.	13		1,695		R230 G66 B132	
3.	12		1,873		R41 G191 B255	
4.	2		1,605		R37 G81 B153	
5.	15		1,487		R255 G124 B168	
6.	10		701		R73 G166 B140	
7.	3		1,041		R217 G52 B71	
8.	6		1,216		R179 G20 B173	
9.	4		1,247		R230 G113 B63	
10.	7		633	7	Green	Default
11.	14		130	14	Brown	Default
12.	5		392		R95 G179 B65	
13.	9		2,505	9	White	Default
14.	8		3,945	8	Black	Default



# Production Worksheet

Wilcom EmbroideryStudio - Designing



Design: **4**

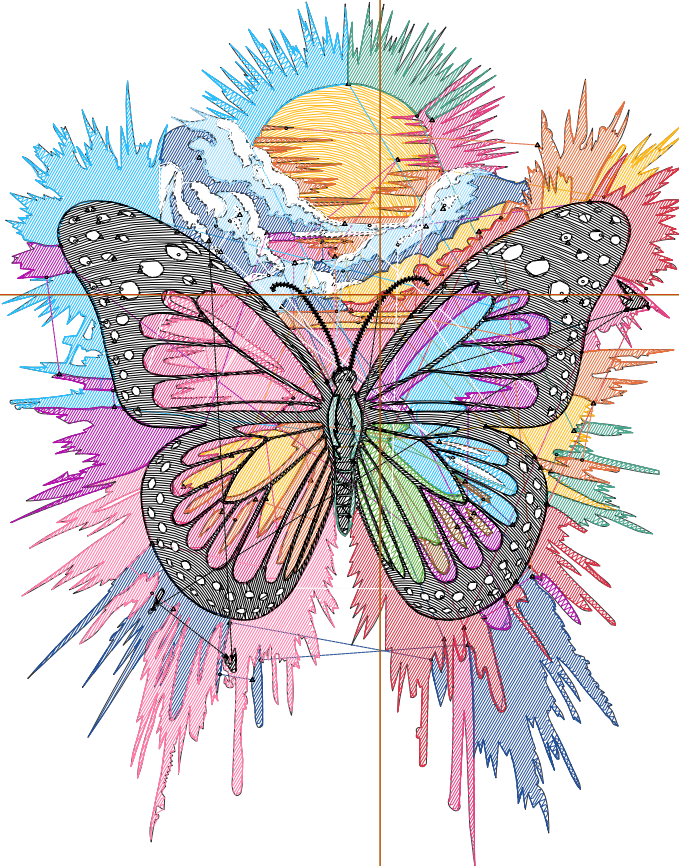
Title:

Stitches: 27,451  
 Height: 4.49 in  
 Width: 3.54 in  
 Colors: 14  
 Colorway: Colorway 1  
 Zoom: 1:1

Machine format: Tajima  
 Color changes: 13  
 Stops: 14  
 Trims: 111  
 Appliqués: 0  
 Left: 50.0 mm  
 Right: 39.8 mm  
 Up: 38.7 mm  
 Down: 75.5 mm  
 EndX: 0.00 in  
 EndY: 0.00 in  
 Area: 15.90 in<sup>2</sup>  
 Max stitch: 12.1 mm  
 Min stitch: 0.0 mm  
 Max jump: 7.0 mm  
 Total thread: 317.69ft  
 Total bobbin: 78.80ft

Stop Sequence:

#	N#	Color	St.	Code	Name	Chart
1.	1		2,166		R255 G186 B26	
2.	13		2,280		R230 G66 B132	
3.	12		2,595		R41 G191 B255	
4.	2		2,145		R37 G81 B153	
5.	15		1,997		R255 G124 B168	
6.	10		944		R73 G166 B140	
7.	3		1,403		R217 G52 B71	
8.	6		1,691		R179 G20 B173	
9.	4		1,689		R230 G113 B63	
10.	7		849	7	Green	Default
11.	14		184	14	Brown	Default
12.	5		532		R95 G179 B65	
13.	9		3,226	9	White	Default
14.	8		5,748	8	Black	Default



# Production Worksheet

Wilcom EmbroideryStudio - Designing



Design: **5**

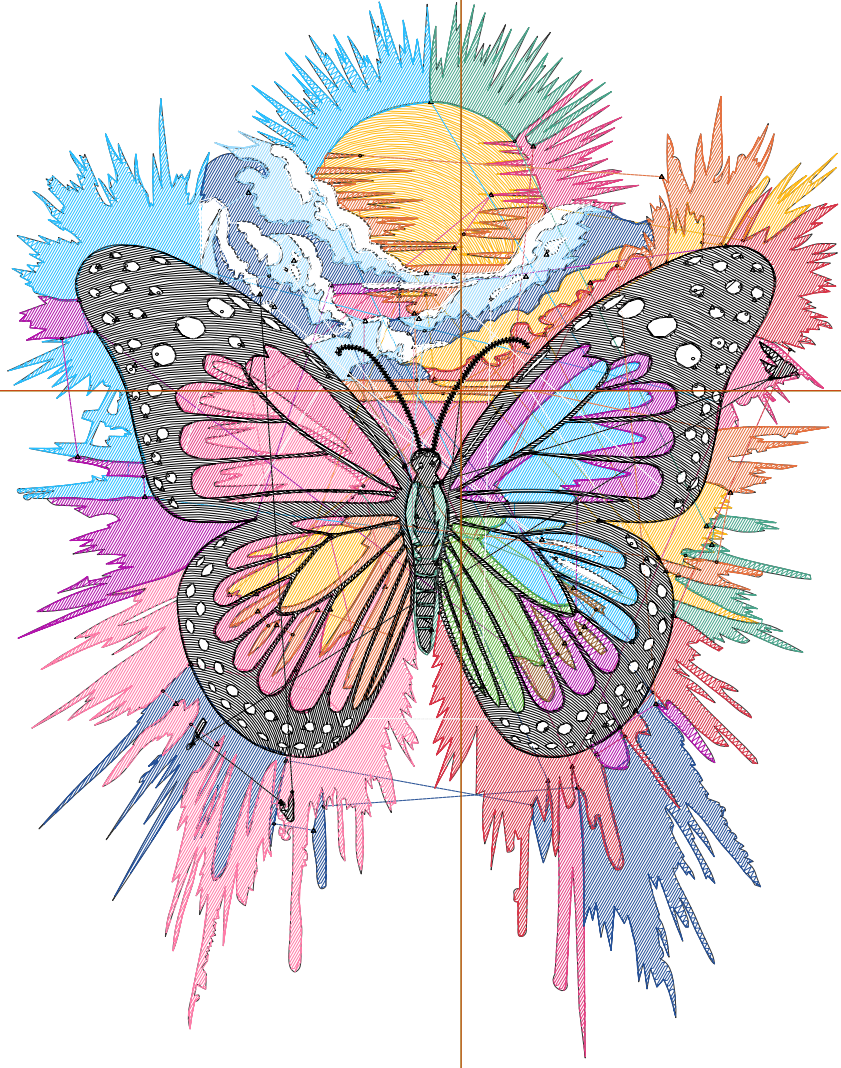
Title:

Stitches: 35,480  
 Height: 5.49 in  
 Width: 4.32 in  
 Colors: 14  
 Colorway: Colorway 1  
 Zoom: 1:1

Machine format: Tajima  
 Color changes: 13  
 Stops: 14  
 Trims: 132  
 Appliqués: 0  
 Left: 59.8 mm  
 Right: 49.8 mm  
 Up: 51.4 mm  
 Down: 88.1 mm  
 EndX: 0.00 in  
 EndY: 0.00 in  
 Area: 23.71 in<sup>2</sup>  
 Max stitch: 7.0 mm  
 Min stitch: 0.0 mm  
 Max jump: 7.0 mm  
 Total thread: 423.63ft  
 Total bobbin: 110.36ft

Stop Sequence:

#	N#	Color	St.	Code	Name	Chart
1.	1		2,763		R255 G186 B26	
2.	13		2,922		R230 G66 B132	
3.	12		3,336		R41 G191 B255	
4.	2		2,821		R37 G81 B153	
5.	15		2,613		R255 G124 B168	
6.	10		1,240		R73 G166 B140	
7.	3		1,801		R217 G52 B71	
8.	6		2,173		R179 G20 B173	
9.	4		2,262		R230 G113 B63	
10.	7		1,093	7	Green	Default
11.	14		235	14	Brown	Default
12.	5		715		R95 G179 B65	
13.	9		3,895	9	White	Default
14.	8		7,609	8	Black	Default



# Production Worksheet

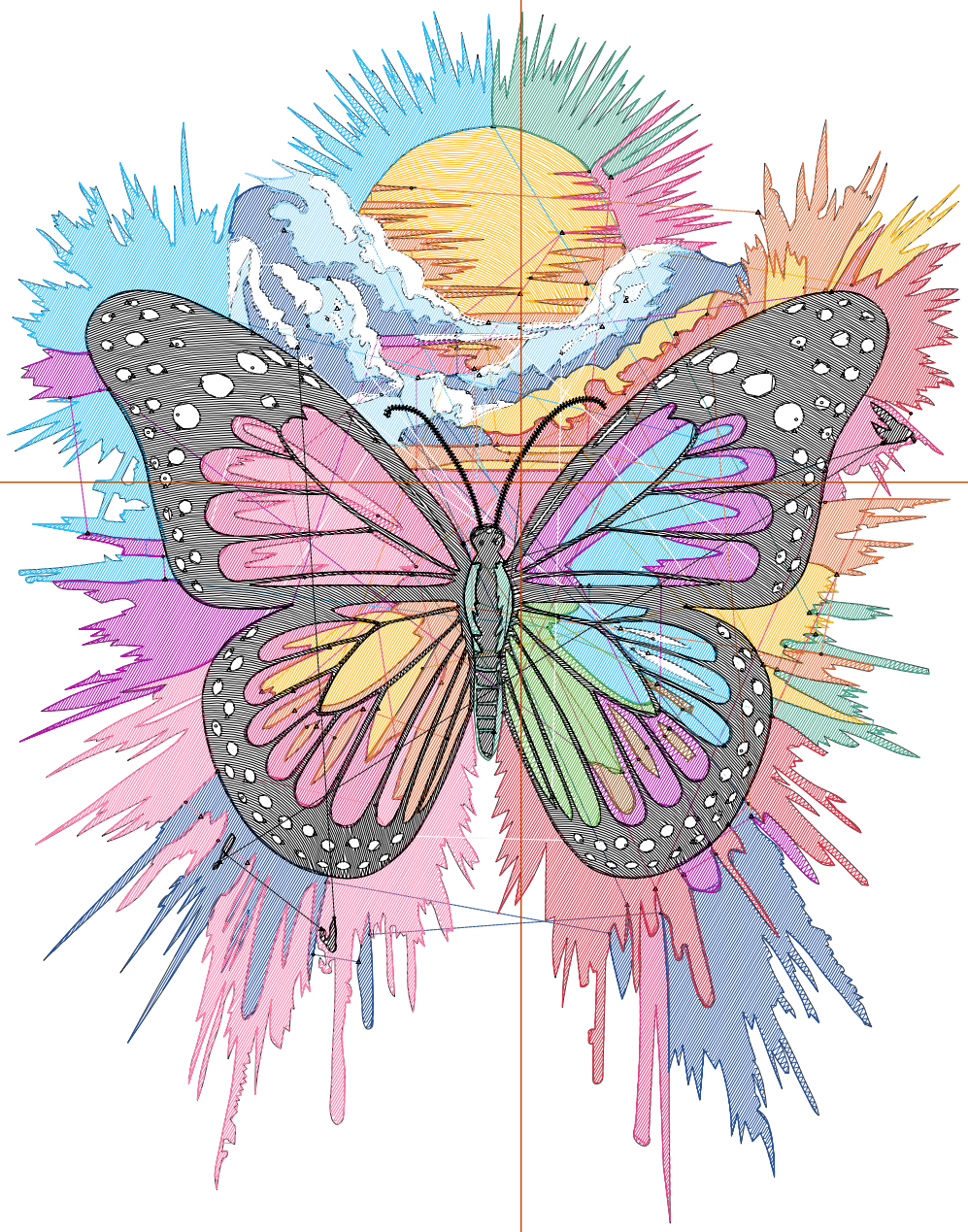
Wilcom EmbroideryStudio - Designing



Design: **6**

Title:

Stitches: 44,079  
Height: 6.49 in  
Width: 5.11 in  
Colors: 14  
Colorway: Colorway 1  
Zoom: 1:1



# Production Worksheet

Wilcom EmbroideryStudio - Designing



Design: **6**

Title:

Stitches: 44,079  
 Height: 6.49 in  
 Width: 5.11 in  
 Colors: 14  
 Colorway: Colorway 1  
 Zoom: 1:1

Machine format: Tajima  
 Color changes: 13  
 Stops: 14  
 Trims: 154  
 Appliqués: 0  
 Left: 70.0 mm  
 Right: 59.8 mm  
 Up: 64.1 mm  
 Down: 100.7 mm  
 EndX: 0.00 in  
 EndY: 0.00 in  
 Area 33.15 in<sup>2</sup>  
 Max stitch: 7.0 mm  
 Min stitch: 0.0 mm  
 Max jump: 7.0 mm  
 Total thread: 542.21ft  
 Total bobbin: 147.19ft

Stop Sequence:

#	N#	Color	St.	Code	Name	Chart
1.	1		3,432		R255 G186 B26	
2.	13		3,628		R230 G66 B132	
3.	12		4,152		R41 G191 B255	
4.	2		3,504		R37 G81 B153	
5.	15		3,237		R255 G124 B168	
6.	10		1,505		R73 G166 B140	
7.	3		2,242		R217 G52 B71	
8.	6		2,723		R179 G20 B173	
9.	4		2,727		R230 G113 B63	
10.	7		1,372	7	Green	Default
11.	14		287	14	Brown	Default
12.	5		898		R95 G179 B65	
13.	9		4,696	9	White	Default
14.	8		9,674	8	Black	Default

# Production Worksheet

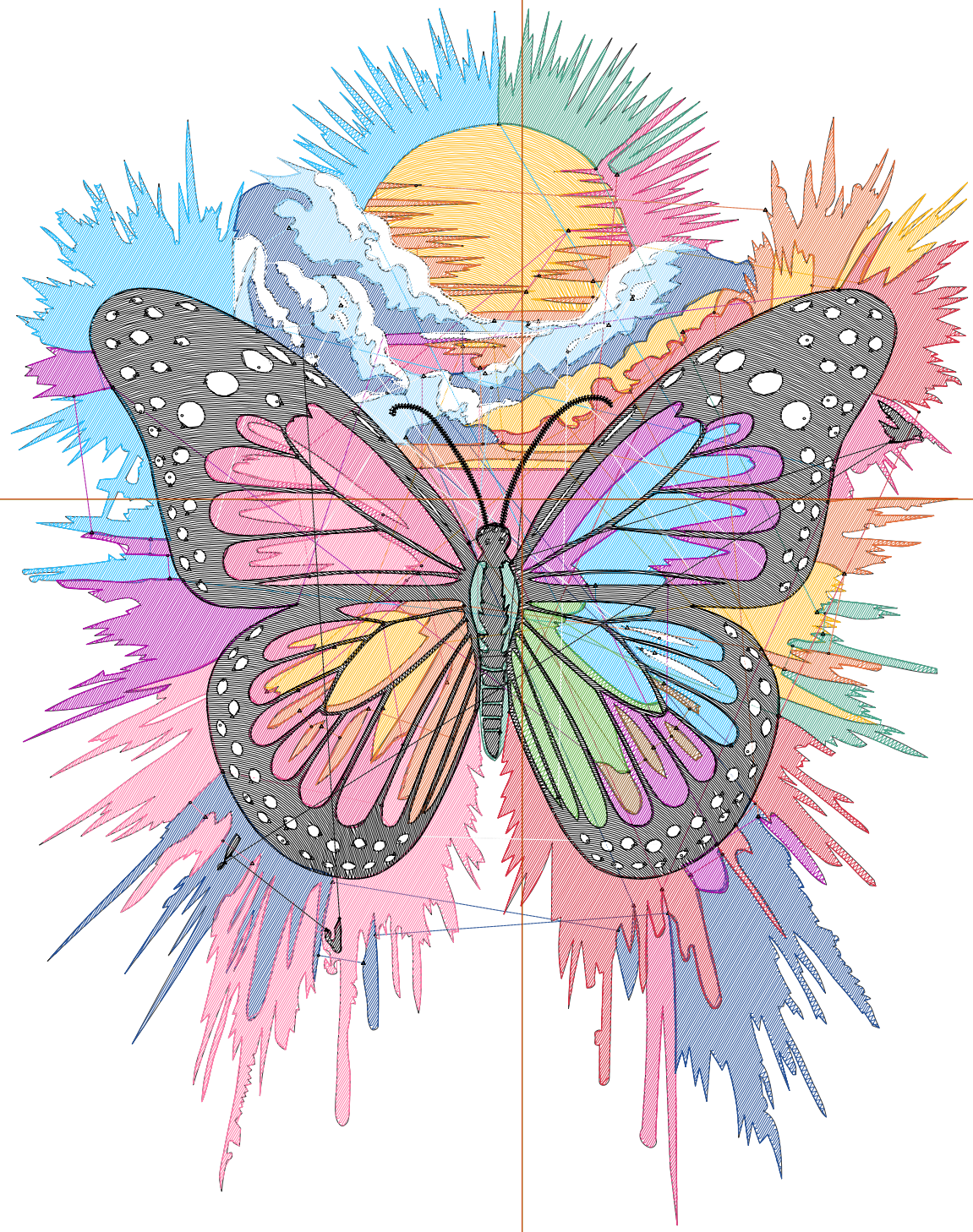
Wilcom EmbroideryStudio - Designing



Design: **7**

Title:

Stitches: 53,269  
Height: 7.50 in  
Width: 5.90 in  
Colors: 14  
Colorway: Colorway 1  
Zoom: 1:1



# Production Worksheet

Wilcom EmbroideryStudio - Designing



Design: **7**

Title:

Stitches: 53,269  
 Height: 7.50 in  
 Width: 5.90 in  
 Colors: 14  
 Colorway: Colorway 1  
 Zoom: 1:1

Machine format: Tajima  
 Color changes: 13  
 Stops: 14  
 Trims: 168  
 Appliqués: 0  
 Left: 80.0 mm  
 Right: 69.8 mm  
 Up: 76.8 mm  
 Down: 113.7 mm  
 EndX: 0.00 in  
 EndY: 0.00 in  
 Area 44.21 in<sup>2</sup>  
 Max stitch: 7.0 mm  
 Min stitch: 0.0 mm  
 Max jump: 7.0 mm  
 Total thread: 673.32ft  
 Total bobbin: 189.15ft

Stop Sequence:

#	N#	Color	St.	Code	Name	Chart
1.	1		4,163		R255 G186 B26	
2.	13		4,371		R230 G66 B132	
3.	12		5,064		R41 G191 B255	
4.	2		4,250		R37 G81 B153	
5.	15		3,883		R255 G124 B168	
6.	10		1,805		R73 G166 B140	
7.	3		2,756		R217 G52 B71	
8.	6		3,265		R179 G20 B173	
9.	4		3,311		R230 G113 B63	
10.	7		1,635	7	Green	Default
11.	14		338	14	Brown	Default
12.	5		1,086		R95 G179 B65	
13.	9		5,372	9	White	Default
14.	8		11,968	8	Black	Default