

Production Worksheet

Wilcom EmbroideryStudio - Designing



Design: **3**

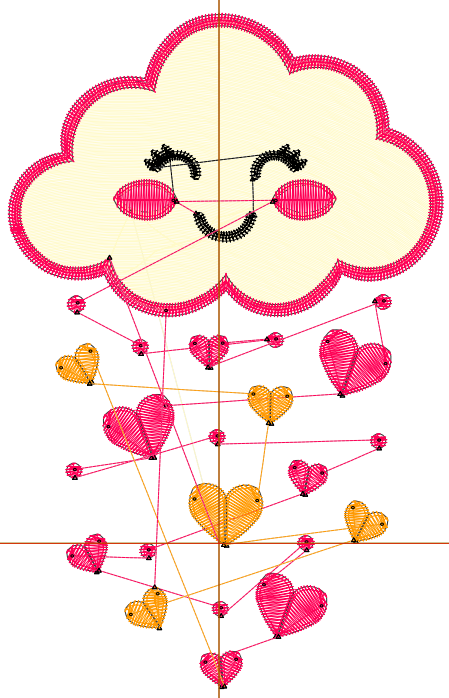
Title:

Stitches: 6,381
Height: 3.51 in
Width: 2.27 in
Colors: 4
Colorway: Colorway 1
Zoom: 1:1

Machine format: Tajima
Color changes: 4
Stops: 5
Trims: 41
Appliqués: 0
Left: 27.9 mm
Right: 29.7 mm
Up: 70.2 mm
Down: 19.0 mm
EndX: 0.00 in
EndY: 0.00 in
Area: 7.96 in²
Max stitch: 6.5 mm
Min stitch: 0.0 mm
Max jump: 6.5 mm
Total thread: 102.48ft
Total bobbin: 34.94ft

Stop Sequence:

#	N#	Color	St.	Code	Name	Chart
1.	3		3,028		R255 G250 B201	
2.	8		352	8	Black	Default
3.	1		1,371		R255 G1 B86	
4.	2		604		R255 G153 B1	
5.	1		1,024		R255 G1 B86	



Production Worksheet

Wilcom EmbroideryStudio - Designing



Design: **4**

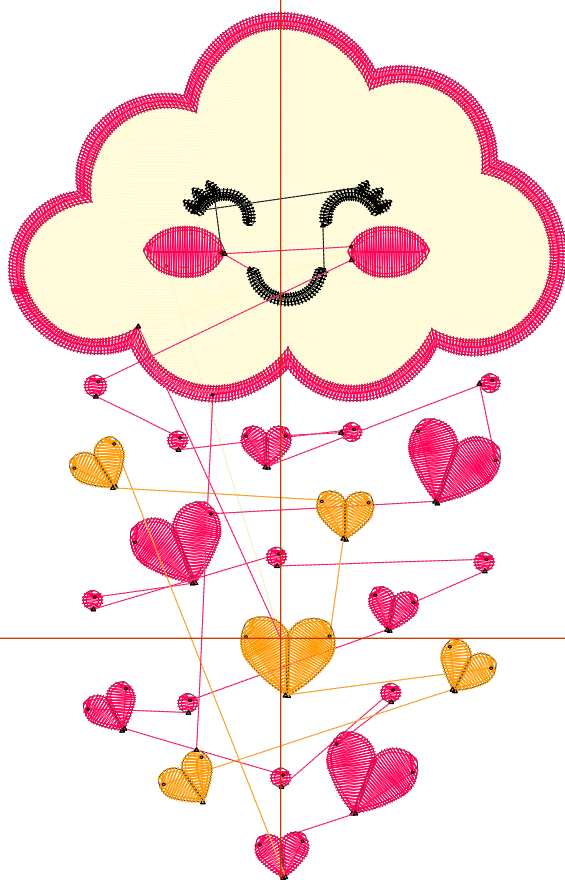
Title:

Stitches: 8,893
Height: 4.51 in
Width: 2.91 in
Colors: 4
Colorway: Colorway 1
Zoom: 1:1

Machine format: Tajima
Color changes: 4
Stops: 5
Trims: 41
Appliqués: 0
Left: 36.1 mm
Right: 37.9 mm
Up: 82.8 mm
Down: 31.7 mm
EndX: 0.00 in
EndY: 0.00 in
Area: 13.13 in²
Max stitch: 8.4 mm
Min stitch: 0.1 mm
Max jump: 6.9 mm
Total thread: 154.46ft
Total bobbin: 55.98ft

Stop Sequence:

#	N#	Color	St.	Code	Name	Chart
1.	3		4,786		R255 G250 B201	
2.	8		428	8	Black	Default
3.	1		1,652		R255 G1 B86	
4.	2		731		R255 G153 B1	
5.	1		1,294		R255 G1 B86	



Production Worksheet

Wilcom EmbroideryStudio - Designing



Design: **5**

Title:

Stitches: 11,803

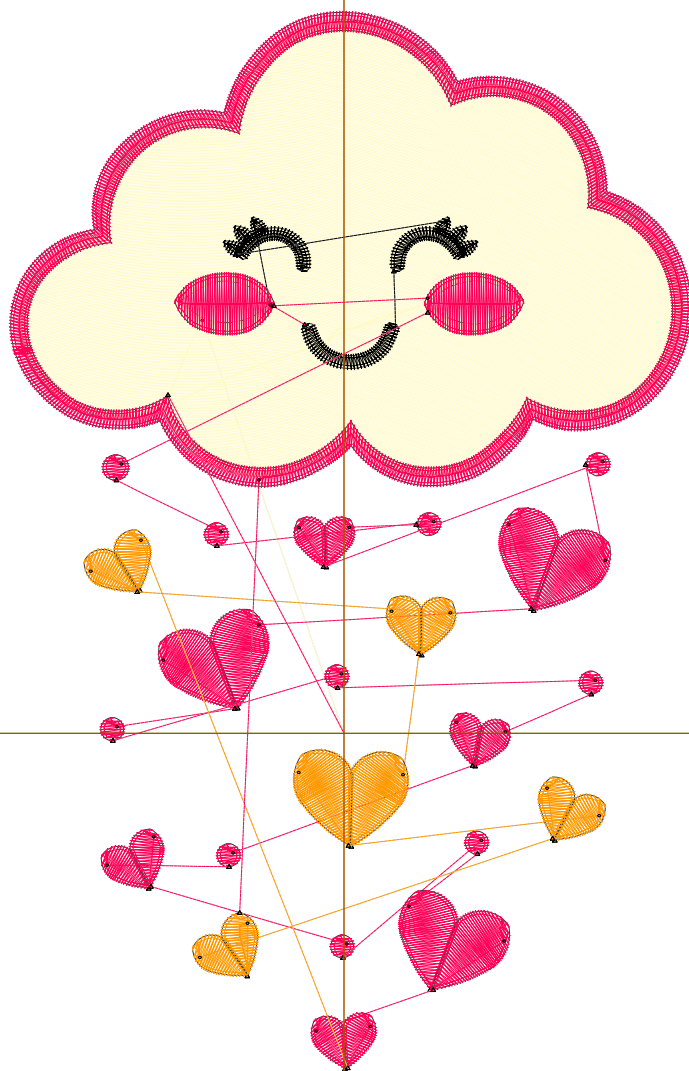
Height: 5.51 in

Width: 3.56 in

Colors: 4

Colorway: Colorway 1

Zoom: 1:1



Machine format: Tajima
Color changes: 4
Stops: 5
Trims: 41
Appliqués: 0
Left: 44.3 mm
Right: 46.1 mm
Up: 95.5 mm
Down: 44.4 mm
EndX: 0.00 in
EndY: 0.00 in
Area: 19.59 in²
Max stitch: 10.9 mm
Min stitch: 0.2 mm
Max jump: 7.0 mm
Total thread: 218.27ft
Total bobbin: 82.48ft

Stop Sequence:

#	N#	Color	St.	Code	Name	Chart
1.	3		6,875		R255 G250 B201	
2.	8		498	8	Black	Default
3.	1		1,958		R255 G1 B86	
4.	2		872		R255 G153 B1	
5.	1		1,598		R255 G1 B86	

Production Worksheet

Wilcom EmbroideryStudio - Designing



Design: **6**

Title:

Stitches: 15,175

Height: 6.51 in

Width: 4.20 in

Colors: 4

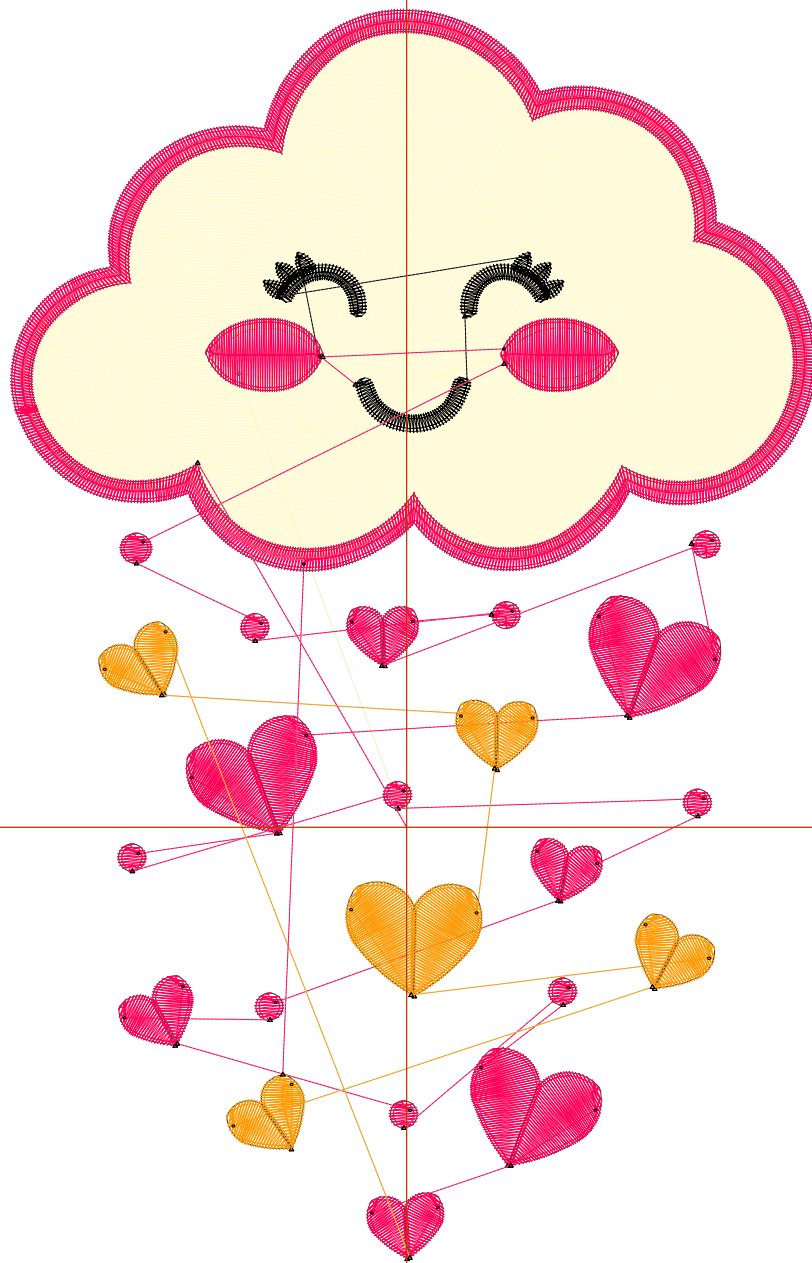
Colorway: Colorway 1

Zoom: 1:1

Machine format: Tajima
 Color changes: 4
 Stops: 5
 Trims: 41
 Appliqués: 0
 Left: 52.4 mm
 Right: 54.3 mm
 Up: 108.2 mm
 Down: 57.1 mm
 EndX: 0.00 in
 EndY: 0.00 in
 Area: 27.34 in²
 Max stitch: 9.7 mm
 Min stitch: 0.0 mm
 Max jump: 6.9 mm
 Total thread: 293.78ft
 Total bobbin: 114.11ft

Stop Sequence:

#	N#	Color	St.	Code	Name	Chart
1.	3		9,398		R255 G250 B201	
2.	8		579	8	Black	Default
3.	1		2,241		R255 G1 B86	
4.	2		1,018		R255 G153 B1	
5.	1		1,937		R255 G1 B86	



Production Worksheet

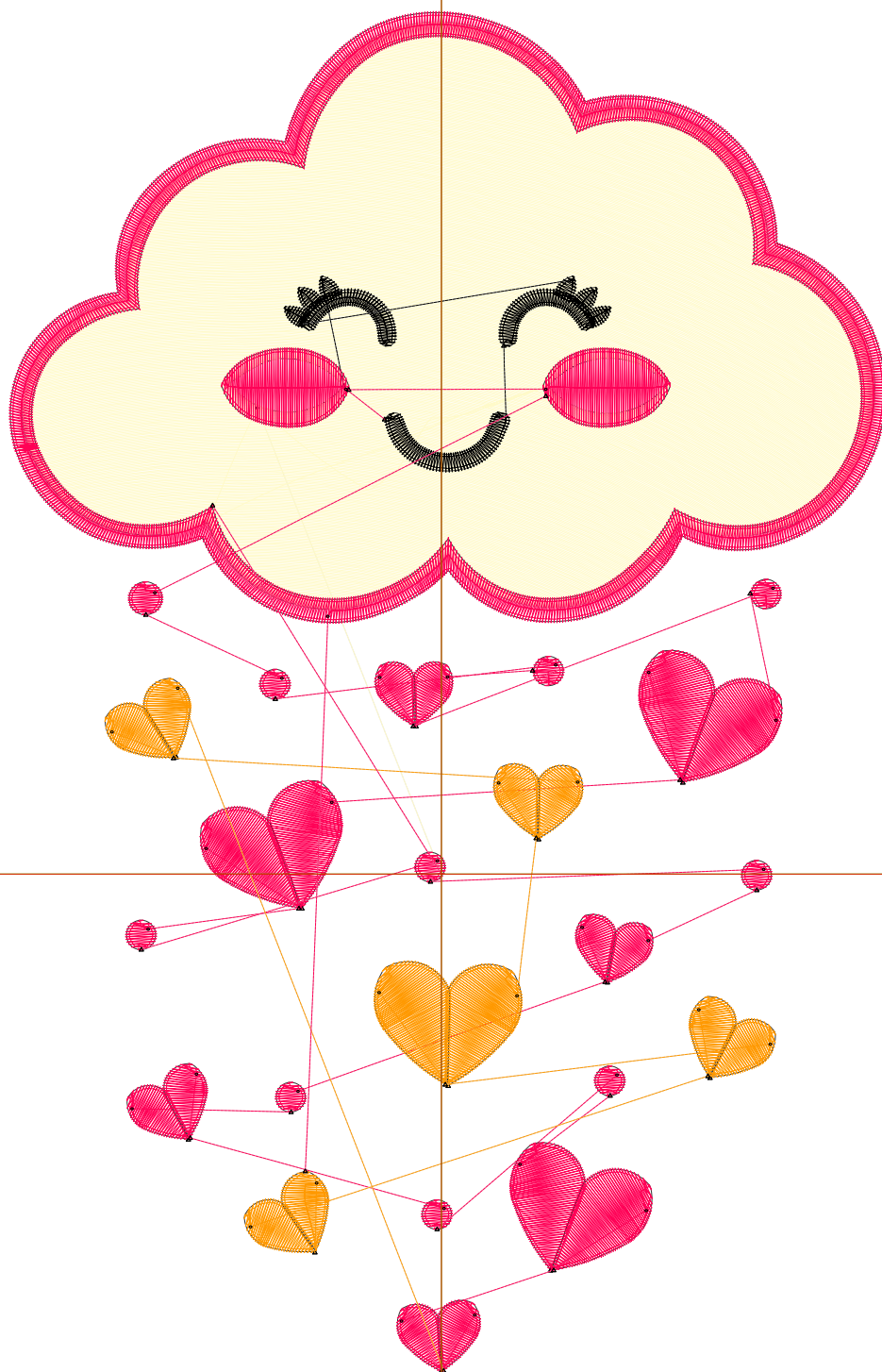
Wilcom EmbroideryStudio - Designing



Design: **7**

Title:

Stitches: 18,919
Height: 7.51 in
Width: 4.84 in
Colors: 4
Colorway: Colorway 1
Zoom: 1:1



Machine format: Tajima
Color changes: 4
Stops: 5
Trims: 41
Appliqués: 0
Left: 60.6 mm
Right: 62.4 mm
Up: 120.9 mm
Down: 69.8 mm
EndX: 0.00 in
EndY: 0.00 in
Area: 36.38 in²
Max stitch: 11.2 mm
Min stitch: 0.0 mm
Max jump: 7.0 mm
Total thread: 380.29ft
Total bobbin: 150.82ft

Stop Sequence:

#	N#	Color	St.	Code	Name	Chart
1.	3		12,260		R255 G250 B201	
2.	8		660	8	Black	Default
3.	1		2,550		R255 G1 B86	
4.	2		1,164		R255 G153 B1	
5.	1		2,283		R255 G1 B86	