

# Production Worksheet

Wilcom EmbroideryStudio - Designing



Design: **3**

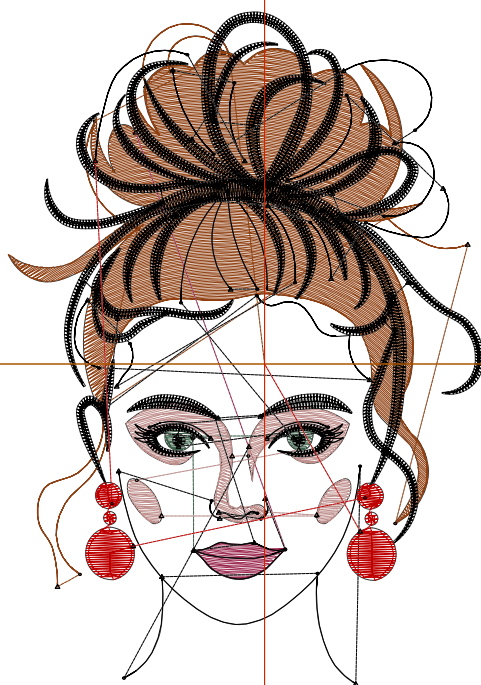
Title:

Stitches: 10,244  
Height: 3.50 in  
Width: 2.47 in  
Colors: 6  
Colorway: Colorway 1  
Zoom: 1:1

Machine format: Tajima  
Color changes: 5  
Stops: 6  
Trims: 52  
Appliqués: 0  
Left: 33.9 mm  
Right: 28.9 mm  
Up: 46.5 mm  
Down: 42.3 mm  
EndX: 0.00 in  
EndY: 0.00 in  
Area: 8.65 in<sup>2</sup>  
Max stitch: 6.9 mm  
Min stitch: 0.0 mm  
Max jump: 6.9 mm  
Total thread: 141.31ft  
Total bobbin: 42.74ft

### Stop Sequence:

#	N#	Color	St.	Code	Name	Chart
1.	4		3,605		R143 G63 B16	
2.	1		117		R153 G36 B75	
3.	3		107		R58 G97 B71	
4.	2		725		R191 G143 B140	
5.	8		5,394	8	Black	Default
6.	5		294		R191 G0 B0	



# Production Worksheet

Wilcom EmbroideryStudio - Designing



Design: **4**

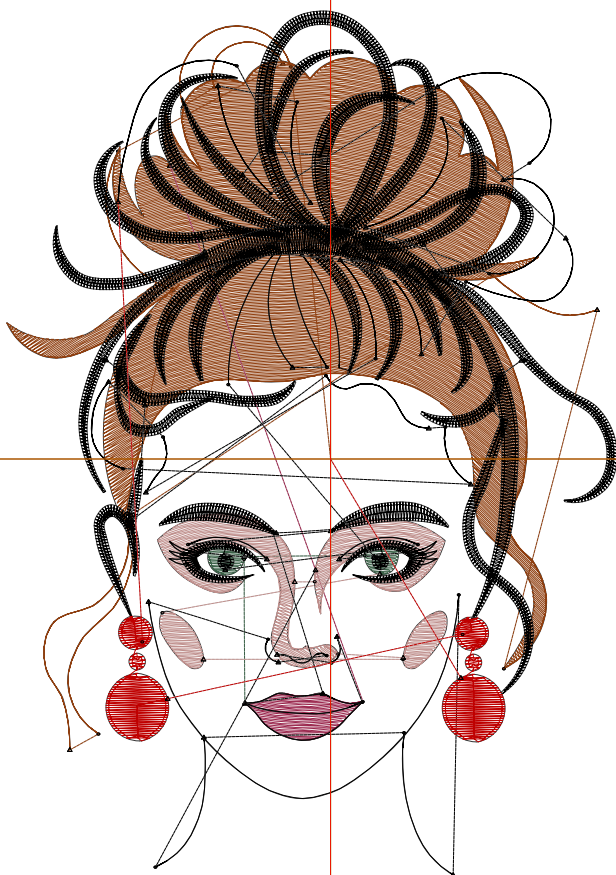
Title:

Stitches: 13,956  
 Height: 4.50 in  
 Width: 3.18 in  
 Colors: 6  
 Colorway: Colorway 1  
 Zoom: 1:1

Machine format: Tajima  
 Color changes: 5  
 Stops: 6  
 Trims: 56  
 Appliqués: 0  
 Left: 42.8 mm  
 Right: 37.9 mm  
 Up: 59.3 mm  
 Down: 55.0 mm  
 EndX: 0.00 in  
 EndY: 0.00 in  
 Area: 14.30 in<sup>2</sup>  
 Max stitch: 8.3 mm  
 Min stitch: 0.0 mm  
 Max jump: 6.8 mm  
 Total thread: 206.58ft  
 Total bobbin: 66.98ft

Stop Sequence:

#	N#	Color	St.	Code	Name	Chart
1.	4		5,452		R143 G63 B16	
2.	1		173		R153 G36 B75	
3.	3		139		R58 G97 B71	
4.	2		1,019		R191 G143 B140	
5.	8		6,805	8	Black	Default
6.	5		366		R191 G0 B0	



# Production Worksheet

Wilcom EmbroideryStudio - Designing

Stitches: 18,173  
Height: 5.50 in  
Width: 3.88 in  
Colors: 6  
Colorway: Colorway 1  
Zoom: 1:1



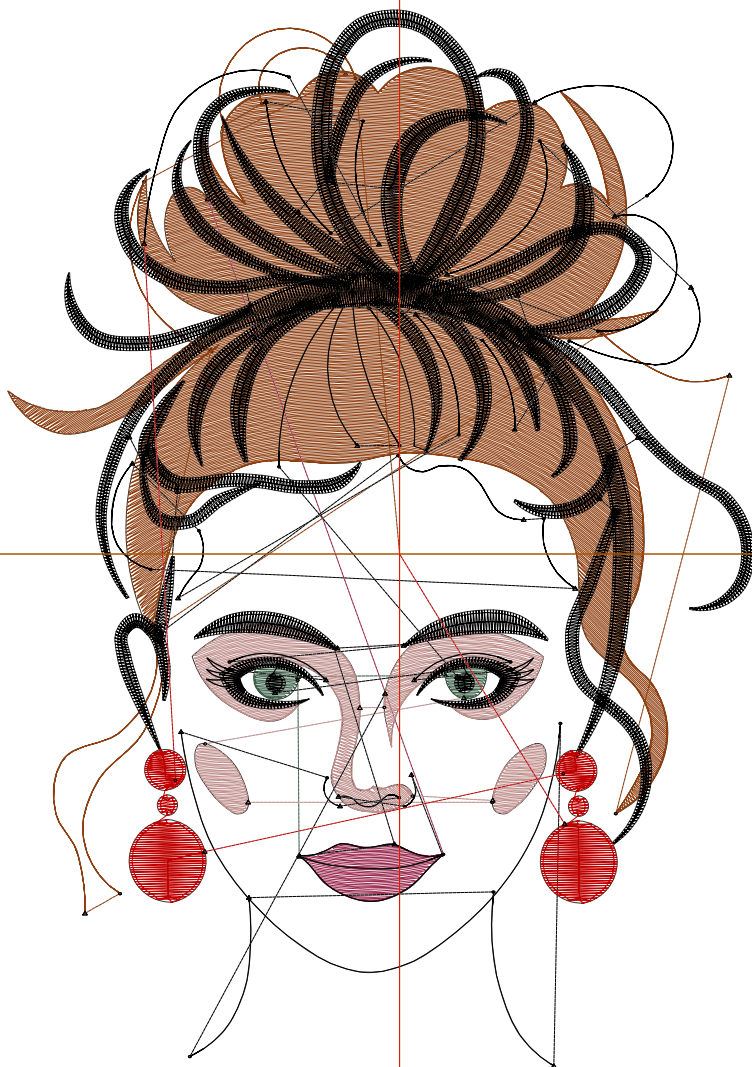
Design: **5**

Title:

Machine format: Tajima  
Color changes: 5  
Stops: 6  
Trims: 56  
Appliqués: 0  
Left: 51.8 mm  
Right: 46.8 mm  
Up: 72.0 mm  
Down: 67.7 mm  
EndX: 0.00 in  
EndY: 0.00 in  
Area: 21.36 in<sup>2</sup>  
Max stitch: 10.2 mm  
Min stitch: 0.0 mm  
Max jump: 7.0 mm  
Total thread: 284.61ft  
Total bobbin: 96.83ft

### Stop Sequence:

#	N#	Color	St.	Code	Name	Chart
1.	4		7,681		R143 G63 B16	
2.	1		234		R153 G36 B75	
3.	3		175		R58 G97 B71	
4.	2		1,395		R191 G143 B140	
5.	8		8,237	8	Black	Default
6.	5		449		R191 G0 B0	



# Production Worksheet

Wilcom EmbroideryStudio - Designing



Design: **6**

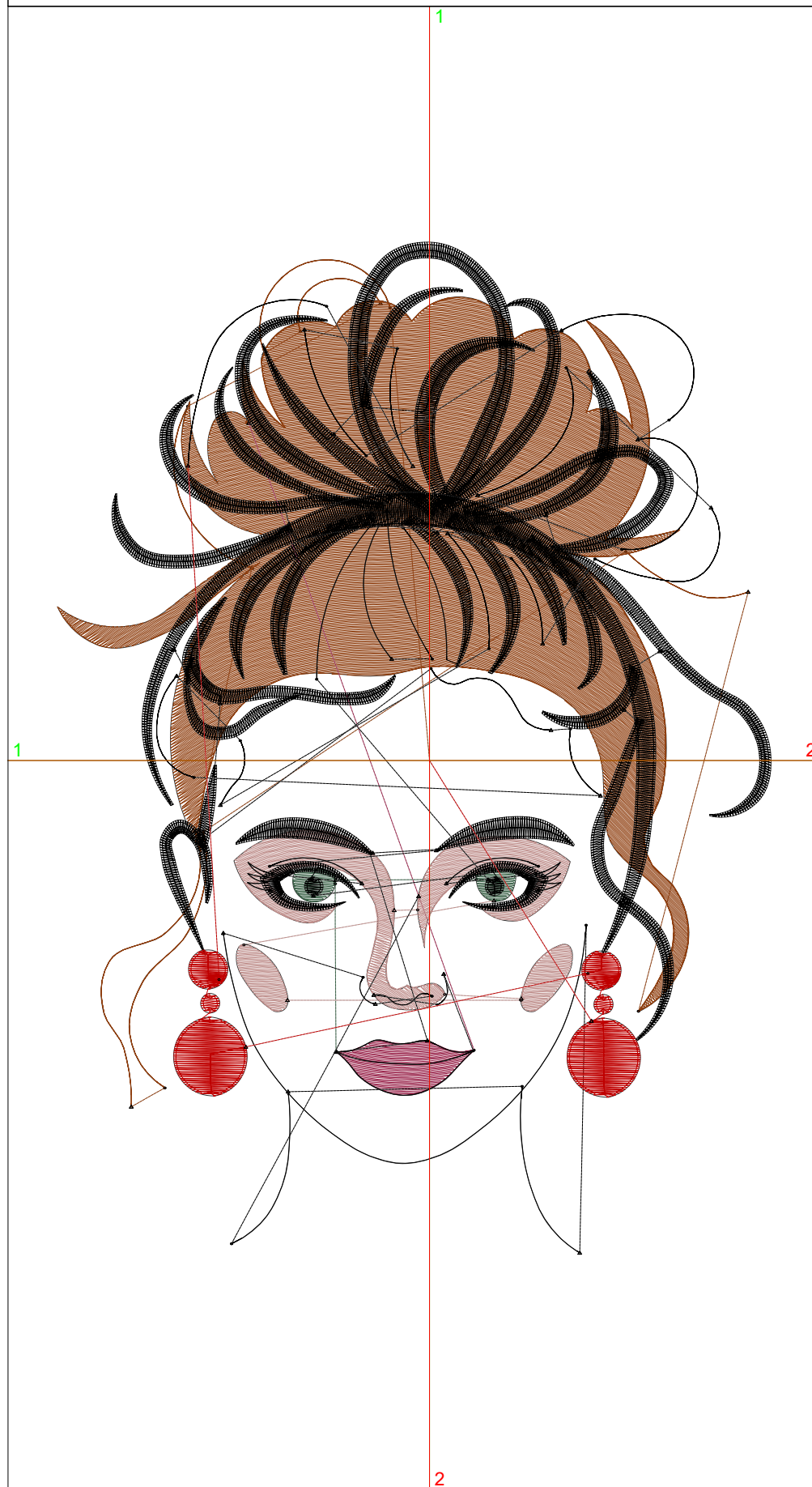
Title:

Stitches: 22,826  
Height: 6.50 in  
Width: 4.59 in  
Colors: 6  
Colorway: Colorway 1  
Zoom: 1:1

Machine format: Tajima  
Color changes: 5  
Stops: 6  
Trims: 59  
Appliqués: 0  
Left: 60.8 mm  
Right: 55.8 mm  
Up: 84.7 mm  
Down: 80.4 mm  
EndX: 0.00 in  
EndY: 0.00 in  
Area: 29.83 in<sup>2</sup>  
Max stitch: 12.0 mm  
Min stitch: 0.0 mm  
Max jump: 7.0 mm  
Total thread: 375.00ft  
Total bobbin: 132.30ft

### Stop Sequence:

#	N#	Color	St.	Code	Name	Chart
1.	4		10,355		R143 G63 B16	
2.	1		301		R153 G36 B75	
3.	3		213		R58 G97 B71	
4.	2		1,729		R191 G143 B140	
5.	8		9,725	8	Black	Default
6.	5		501		R191 G0 B0	



# Production Worksheet

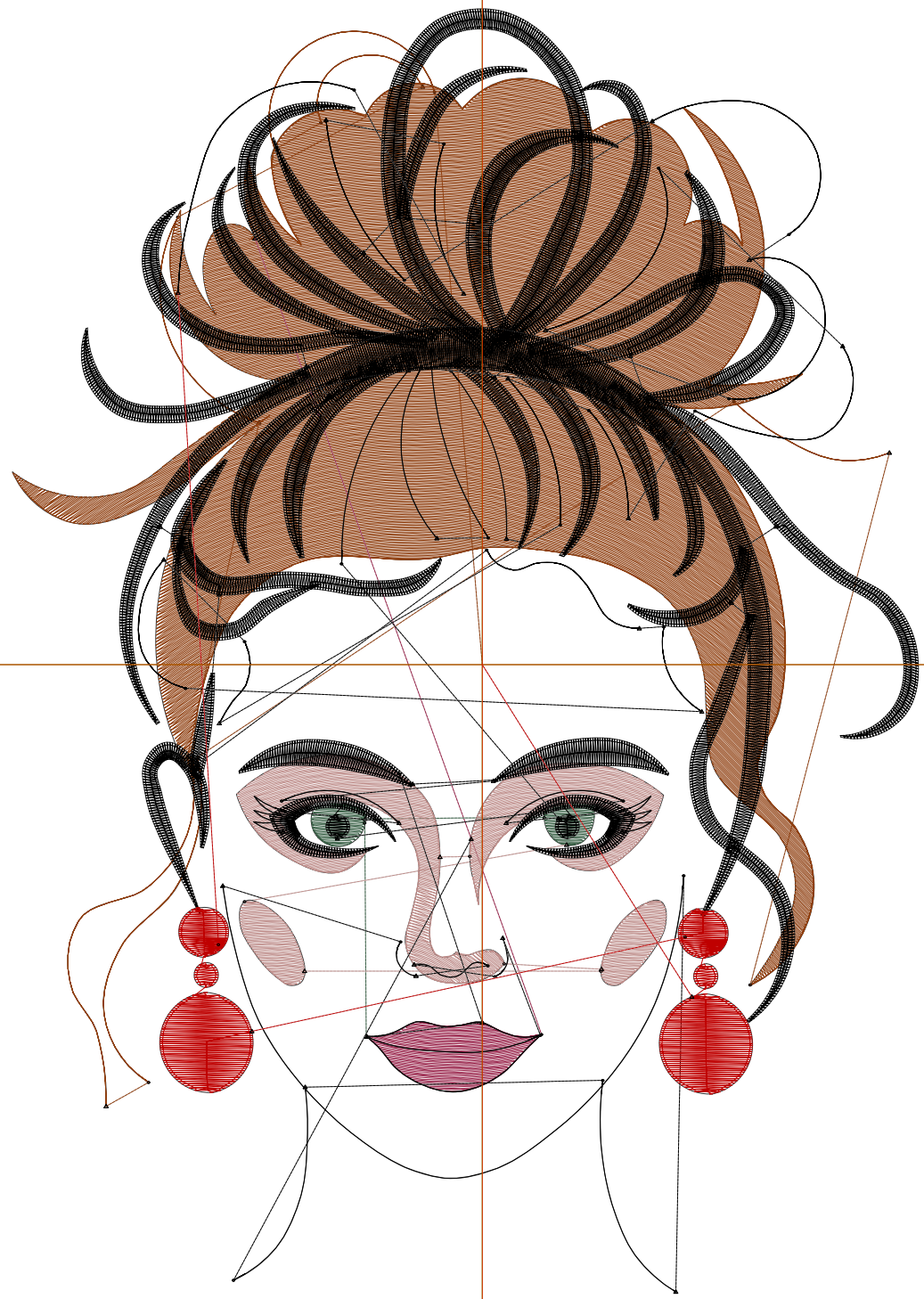
Wilcom EmbroideryStudio - Designing



Design: **7**

Title:

Stitches: 28,090  
Height: 7.50 in  
Width: 5.29 in  
Colors: 6  
Colorway: Colorway 1  
Zoom: 1:1



# Production Worksheet

Wilcom EmbroideryStudio - Designing



Design: **7**

Title:

Stitches: 28,090  
 Height: 7.50 in  
 Width: 5.29 in  
 Colors: 6  
 Colorway: Colorway 1  
 Zoom: 1:1

Machine format: Tajima  
 Color changes: 5  
 Stops: 6  
 Trims: 62  
 Appliqués: 0  
 Left: 69.7 mm  
 Right: 64.8 mm  
 Up: 97.4 mm  
 Down: 93.1 mm  
 EndX: 0.00 in  
 EndY: 0.00 in  
 Area 39.69 in<sup>2</sup>  
 Max stitch: 12.1 mm  
 Min stitch: 0.0 mm  
 Max jump: 7.0 mm  
 Total thread: 479.63ft  
 Total bobbin: 173.83ft

Stop Sequence:

#	N#	Color	St.	Code	Name	Chart
1.	4		13,385		R143 G63 B16	
2.	1		378		R153 G36 B75	
3.	3		264		R58 G97 B71	
4.	2		2,166		R191 G143 B140	
5.	8		11,241	8	Black	Default
6.	5		654		R191 G0 B0	