

Production Worksheet

Wilcom EmbroideryStudio - Designing



Design: **3**

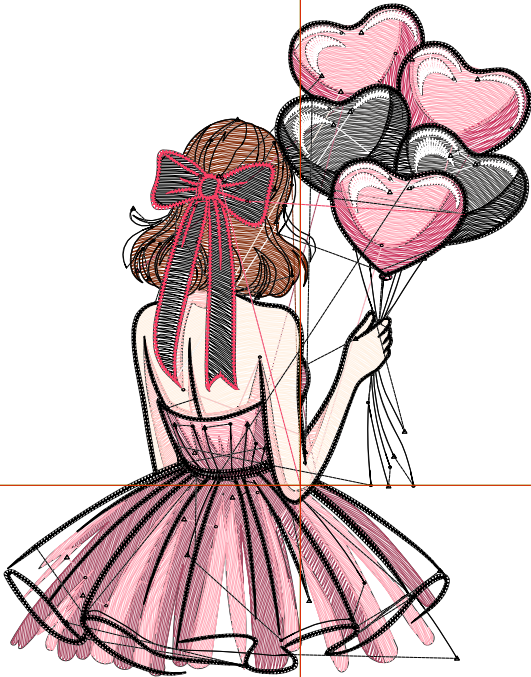
Title:

Stitches: 18,753
 Height: 3.50 in
 Width: 2.75 in
 Colors: 10
 Colorway: Colorway 1
 Zoom: 1:1

Machine format: Tajima
 Color changes: 9
 Stops: 10
 Trims: 93
 Appliqués: 0
 Left: 39.2 mm
 Right: 30.6 mm
 Up: 63.7 mm
 Down: 25.1 mm
 EndX: 0.00 in
 EndY: 0.00 in
 Area 9.60 in²
 Max stitch: 8.2 mm
 Min stitch: 0.0 mm
 Max jump: 6.8 mm
 Total thread: 229.43ft
 Total bobbin: 61.10ft

Stop Sequence:

| # | N# | Color | St. | Code | Name | Chart |
|-----|----|-------|-------|------|----------------|---------|
| 1. | 1 | | 955 | | R133 G47 B13 | |
| 2. | 10 | | 676 | | R204 G55 B97 | |
| 3. | 7 | | 621 | | R69 G68 B67 | |
| 4. | 6 | | 2,333 | | R171 G76 B101 | |
| 5. | 5 | | 2,419 | | R255 G172 B186 | |
| 6. | 4 | | 1,513 | | R255 G241 B227 | |
| 7. | 3 | | 703 | | R255 G196 B193 | |
| 8. | 9 | | 1,120 | 9 | White | Default |
| 9. | 8 | | 7,150 | 8 | Black | Default |
| 10. | 2 | | 1,261 | | R250 G64 B101 | |



Production Worksheet

Wilcom EmbroideryStudio - Designing



Design: **4**

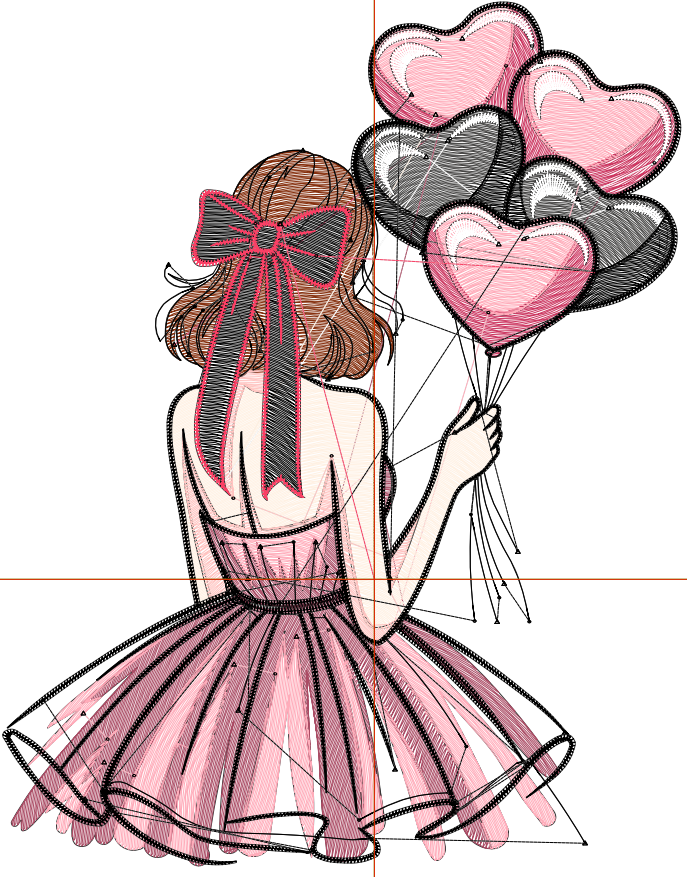
Title:

Stitches: 25,713
 Height: 4.50 in
 Width: 3.53 in
 Colors: 10
 Colorway: Colorway 1
 Zoom: 1:1

Machine format: Tajima
 Color changes: 9
 Stops: 10
 Trims: 102
 Appliqués: 0
 Left: 49.2 mm
 Right: 40.5 mm
 Up: 76.4 mm
 Down: 37.9 mm
 EndX: 0.00 in
 EndY: 0.00 in
 Area 15.89 in²
 Max stitch: 10.6 mm
 Min stitch: 0.0 mm
 Max jump: 7.0 mm
 Total thread: 331.57ft
 Total bobbin: 94.56ft

Stop Sequence:

| # | N# | Color | St. | Code | Name | Chart |
|-----|----|-------|-------|------|----------------|---------|
| 1. | 1 | | 1,420 | | R133 G47 B13 | |
| 2. | 10 | | 996 | | R204 G55 B97 | |
| 3. | 7 | | 926 | | R69 G68 B67 | |
| 4. | 6 | | 3,397 | | R171 G76 B101 | |
| 5. | 5 | | 3,581 | | R255 G172 B186 | |
| 6. | 4 | | 2,173 | | R255 G241 B227 | |
| 7. | 3 | | 960 | | R255 G196 B193 | |
| 8. | 9 | | 1,400 | 9 | White | Default |
| 9. | 8 | | 9,247 | 8 | Black | Default |
| 10. | 2 | | 1,611 | | R250 G64 B101 | |



Production Worksheet

Wilcom EmbroideryStudio - Designing



Design: **5**

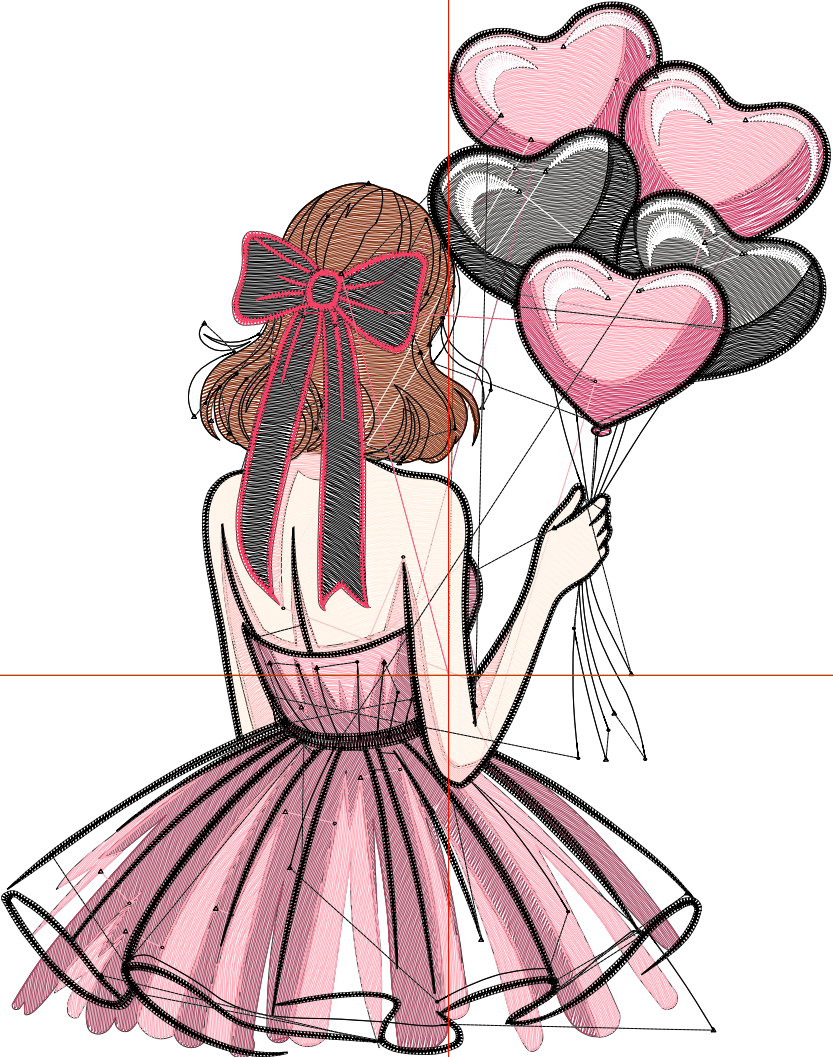
Title:

Stitches: 33,522
 Height: 5.50 in
 Width: 4.31 in
 Colors: 10
 Colorway: Colorway 1
 Zoom: 1:1

Machine format: Tajima
 Color changes: 9
 Stops: 10
 Trims: 109
 Appliqués: 0
 Left: 59.1 mm
 Right: 50.5 mm
 Up: 89.1 mm
 Down: 50.6 mm
 EndX: 0.00 in
 EndY: 0.00 in
 Area: 23.73 in²
 Max stitch: 10.8 mm
 Min stitch: 0.0 mm
 Max jump: 7.0 mm
 Total thread: 451.57ft
 Total bobbin: 135.30ft

Stop Sequence:

| # | N# | Color | St. | Code | Name | Chart |
|-----|----|-------|--------|------|----------------|---------|
| 1. | 1 | | 1,981 | | R133 G47 B13 | |
| 2. | 10 | | 1,325 | | R204 G55 B97 | |
| 3. | 7 | | 1,265 | | R69 G68 B67 | |
| 4. | 6 | | 4,662 | | R171 G76 B101 | |
| 5. | 5 | | 4,924 | | R255 G172 B186 | |
| 6. | 4 | | 3,006 | | R255 G241 B227 | |
| 7. | 3 | | 1,284 | | R255 G196 B193 | |
| 8. | 9 | | 1,668 | 9 | White | Default |
| 9. | 8 | | 11,463 | 8 | Black | Default |
| 10. | 2 | | 1,942 | | R250 G64 B101 | |



Production Worksheet

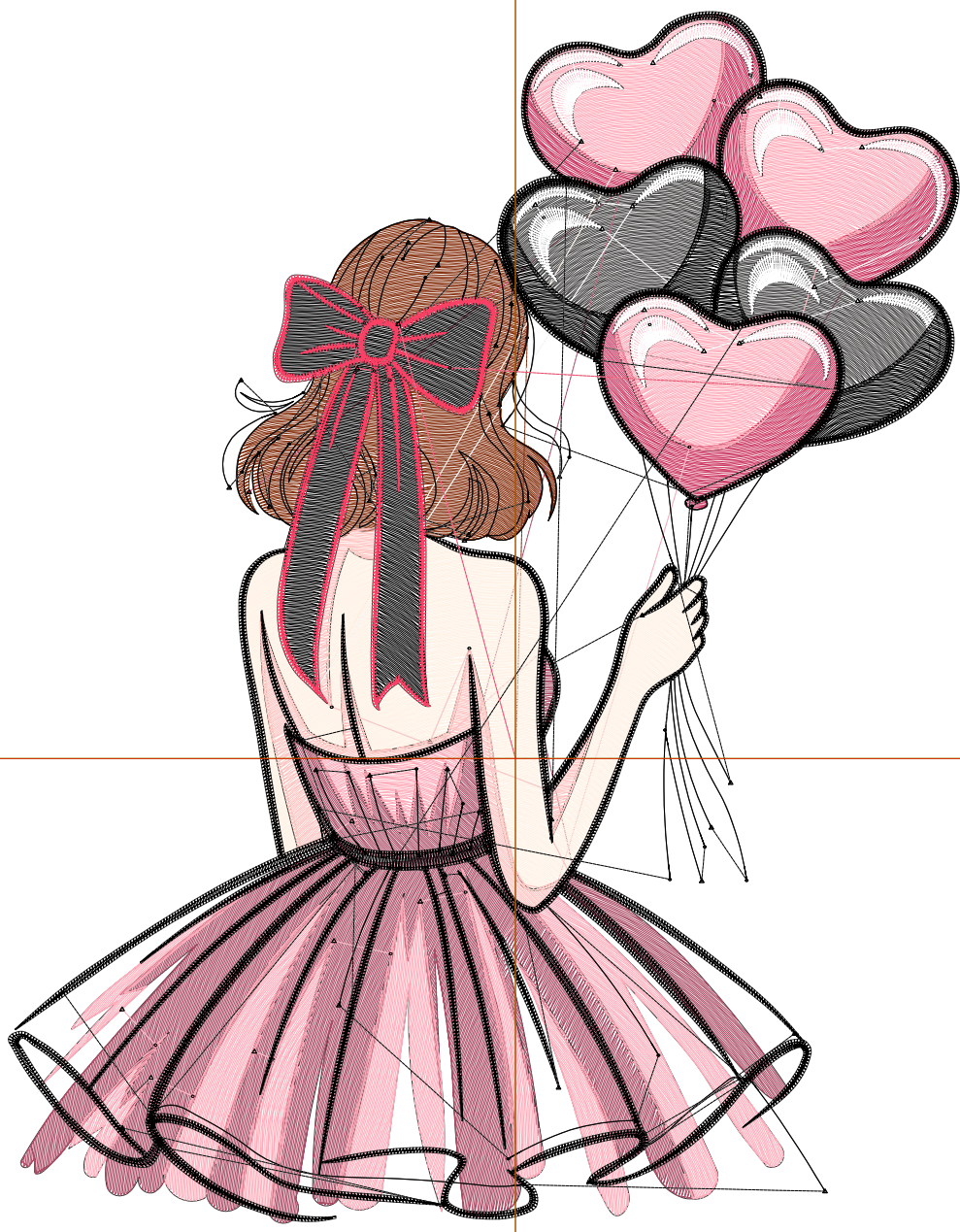
Wilcom EmbroideryStudio - Designing



Design: **6**

Title:

Stitches: 42,170
Height: 6.50 in
Width: 5.10 in
Colors: 10
Colorway: Colorway 1
Zoom: 1:1



Production Worksheet

Wilcom EmbroideryStudio - Designing



Design: **6**

Title:

Stitches: 42,170
 Height: 6.50 in
 Width: 5.10 in
 Colors: 10
 Colorway: Colorway 1
 Zoom: 1:1

Machine format: Tajima
 Color changes: 9
 Stops: 10
 Trims: 116
 Appliqués: 0
 Left: 69.1 mm
 Right: 60.5 mm
 Up: 101.8 mm
 Down: 63.3 mm
 EndX: 0.00 in
 EndY: 0.00 in
 Area 33.15 in²
 Max stitch: 7.0 mm
 Min stitch: 0.0 mm
 Max jump: 7.0 mm
 Total thread: 590.64ft
 Total bobbin: 184.09ft

Stop Sequence:

| # | N# | Color | St. | Code | Name | Chart |
|-----|----|-------|--------|------|----------------|---------|
| 1. | 1 | | 2,645 | | R133 G47 B13 | |
| 2. | 10 | | 1,750 | | R204 G55 B97 | |
| 3. | 7 | | 1,680 | | R69 G68 B67 | |
| 4. | 6 | | 6,142 | | R171 G76 B101 | |
| 5. | 5 | | 6,404 | | R255 G172 B186 | |
| 6. | 4 | | 3,858 | | R255 G241 B227 | |
| 7. | 3 | | 1,640 | | R255 G196 B193 | |
| 8. | 9 | | 1,938 | 9 | White | Default |
| 9. | 8 | | 13,819 | 8 | Black | Default |
| 10. | 2 | | 2,292 | | R250 G64 B101 | |

Production Worksheet

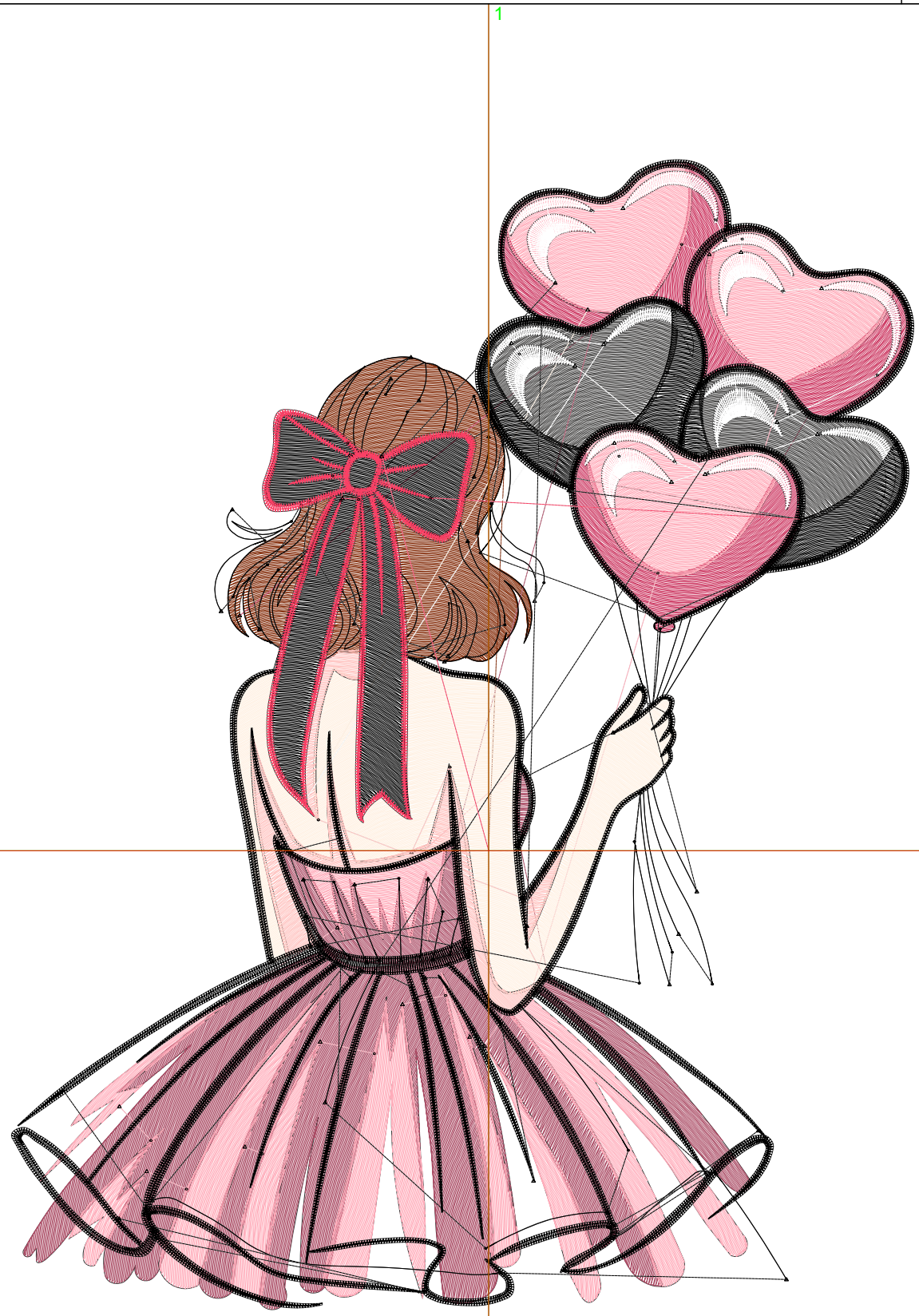
Wilcom EmbroideryStudio - Designing



Design: **7**

Title:

Stitches: 51,597
Height: 7.50 in
Width: 5.88 in
Colors: 10
Colorway: Colorway 1
Zoom: 1:1



Production Worksheet

Wilcom EmbroideryStudio - Designing



Design: **7**

Title:

Stitches: 51,597
 Height: 7.50 in
 Width: 5.88 in
 Colors: 10
 Colorway: Colorway 1
 Zoom: 1:1

Machine format: Tajima
 Color changes: 9
 Stops: 10
 Trims: 121
 Appliqués: 0
 Left: 79.1 mm
 Right: 70.4 mm
 Up: 114.5 mm
 Down: 76.0 mm
 EndX: 0.00 in
 EndY: 0.00 in
 Area 44.13 in²
 Max stitch: 6.9 mm
 Min stitch: 0.0 mm
 Max jump: 6.9 mm
 Total thread: 745.00ft
 Total bobbin: 238.91ft

Stop Sequence:

| # | N# | Color | St. | Code | Name | Chart |
|-----|----|-------|--------|------|----------------|---------|
| 1. | 1 | | 3,344 | | R133 G47 B13 | |
| 2. | 10 | | 2,202 | | R204 G55 B97 | |
| 3. | 7 | | 2,186 | | R69 G68 B67 | |
| 4. | 6 | | 7,767 | | R171 G76 B101 | |
| 5. | 5 | | 8,090 | | R255 G172 B186 | |
| 6. | 4 | | 4,849 | | R255 G241 B227 | |
| 7. | 3 | | 1,982 | | R255 G196 B193 | |
| 8. | 9 | | 2,211 | 9 | White | Default |
| 9. | 8 | | 16,319 | 8 | Black | Default |
| 10. | 2 | | 2,645 | | R250 G64 B101 | |