

Production Worksheet

Wilcom EmbroideryStudio - Designing



Design: **3**

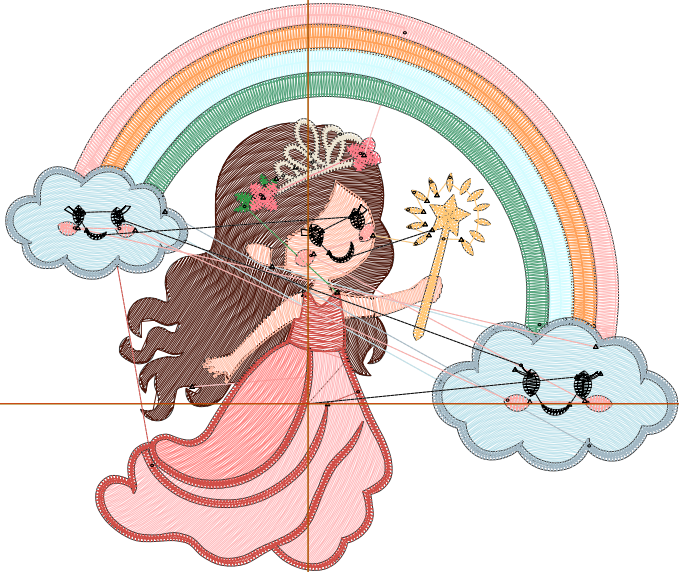
Title:

Stitches: 13,092
 Height: 2.95 in
 Width: 3.50 in
 Colors: 17
 Colorway: Colorway 1
 Zoom: 1:1

Machine format: Tajima
 Color changes: 16
 Stops: 17
 Trims: 47
 Appliqués: 0
 Left: 40.0 mm
 Right: 48.9 mm
 Up: 52.9 mm
 Down: 22.0 mm
 EndX: 0.00 in
 EndY: 0.00 in
 Area 10.33 in²
 Max stitch: 7.7 mm
 Min stitch: 0.0 mm
 Max jump: 6.9 mm
 Total thread: 196.58ft
 Total bobbin: 62.28ft

Stop Sequence:

#	N#	Color	St.	Code	Name	Chart
1.	15		1,901		R77 G23 B11	
2.	17		1,177		R255 G185 B187	
3.	16		424		R255 G136 B134	
4.	14		837		R255 G190 B167	
5.	13		1,526		R189 G226 B235	
6.	2		1,426		R209 G78 B71	
7.	1		113		R47 G153 B67	
8.	3		515		R237 G230 B212	
9.	4		210		R255 G125 B138	
10.	5		715		R255 G189 B188	
11.	6		659		R255 G162 B91	
12.	9		610		R211 G252 B255	
13.	10		522		R88 G166 B127	
14.	11		1,219		R163 G184 B196	
15.	7		245		R255 G168 B164	
16.	12		576		R255 G199 B116	
17.	8		415	8	Black	Default



Production Worksheet

Wilcom EmbroideryStudio - Designing



Design: **4**

Title:

Stitches: 18,202
 Height: 3.80 in
 Width: 4.50 in
 Colors: 17
 Colorway: Colorway 1
 Zoom: 1:1

Machine format: Tajima
 Color changes: 16
 Stops: 17
 Trims: 53
 Appliqués: 0
 Left: 52.7 mm
 Right: 61.6 mm
 Up: 63.7 mm
 Down: 32.8 mm
 EndX: 0.00 in
 EndY: 0.00 in
 Area: 17.07 in²
 Max stitch: 11.8 mm
 Min stitch: 0.0 mm
 Max jump: 7.0 mm
 Total thread: 294.91ft
 Total bobbin: 100.68ft

Stop Sequence:

#	N#	Color	St.	Code	Name	Chart
1.	15		2,840	R77	G23 B11	
2.	17		1,838	R255	G185 B187	
3.	16		651	R255	G136 B134	
4.	14		1,215	R255	G190 B167	
5.	13		2,374	R189	G226 B235	
6.	2		1,857	R209	G78 B71	
7.	1		138	R47	G153 B67	
8.	3		656	R237	G230 B212	
9.	4		248	R255	G125 B138	
10.	5		942	R255	G189 B188	
11.	6		877	R255	G162 B91	
12.	9		820	R211	G252 B255	
13.	10		690	R88	G166 B127	
14.	11		1,515	R163	G184 B196	
15.	7		293	R255	G168 B164	
16.	12		741	R255	G199 B116	
17.	8		505	8	Black	Default



Production Worksheet

Wilcom EmbroideryStudio - Designing



Design: **5**

Title:

Stitches: 23,974
Height: 4.64 in
Width: 5.50 in
Colors: 17
Colorway: Colorway 1
Zoom: 1:1



Production Worksheet

Wilcom EmbroideryStudio - Designing



Design: **5**

Title:

Stitches: 23,974
 Height: 4.64 in
 Width: 5.50 in
 Colors: 17
 Colorway: Colorway 1
 Zoom: 1:1

Machine format: Tajima
 Color changes: 16
 Stops: 17
 Trims: 56
 Appliqués: 0
 Left: 65.4 mm
 Right: 74.3 mm
 Up: 74.4 mm
 Down: 43.5 mm
 EndX: 0.00 in
 EndY: 0.00 in
 Area 25.51 in²
 Max stitch: 12.0 mm
 Min stitch: 0.0 mm
 Max jump: 6.9 mm
 Total thread: 416.12ft
 Total bobbin: 150.07ft

Stop Sequence:

#	N#	Color	St.	Code	Name	Chart
1.	15		3,868		R77 G23 B11	
2.	17		2,657		R255 G185 B187	
3.	16		921		R255 G136 B134	
4.	14		1,674		R255 G190 B167	
5.	13		3,443		R189 G226 B235	
6.	2		2,311		R209 G78 B71	
7.	1		158		R47 G153 B67	
8.	3		782		R237 G230 B212	
9.	4		295		R255 G125 B138	
10.	5		1,207		R255 G189 B188	
11.	6		1,124		R255 G162 B91	
12.	9		1,040		R211 G252 B255	
13.	10		881		R88 G166 B127	
14.	11		1,817		R163 G184 B196	
15.	7		329		R255 G168 B164	
16.	12		879		R255 G199 B116	
17.	8		586	8 Black		Default

Production Worksheet

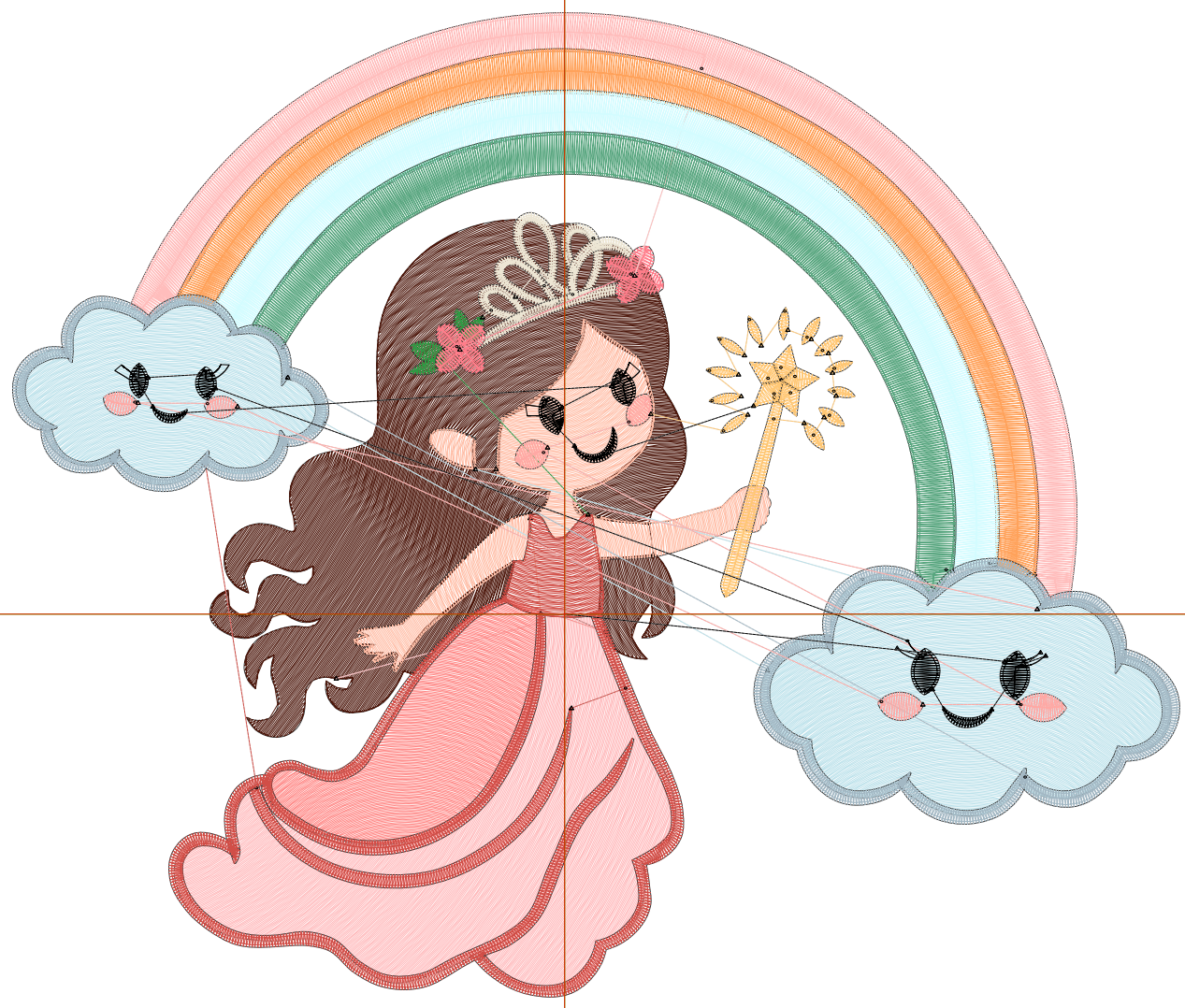
Wilcom EmbroideryStudio - Designing



Design: **6**

Title:

Stitches: 30,755
Height: 5.48 in
Width: 6.50 in
Colors: 17
Colorway: Colorway 1
Zoom: 1:1



1

1

2

2

Production Worksheet

Wilcom EmbroideryStudio - Designing



Design: **6**

Title:

Stitches: 30,755
 Height: 5.48 in
 Width: 6.50 in
 Colors: 17
 Colorway: Colorway 1
 Zoom: 1:1

Machine format: Tajima
 Color changes: 16
 Stops: 17
 Trims: 62
 Appliqués: 0
 Left: 78.1 mm
 Right: 87.0 mm
 Up: 85.1 mm
 Down: 54.2 mm
 EndX: 0.00 in
 EndY: 0.00 in
 Area 35.63 in²
 Max stitch: 10.3 mm
 Min stitch: 0.0 mm
 Max jump: 7.0 mm
 Total thread: 559.49ft
 Total bobbin: 208.66ft

Stop Sequence:

#	N#	Color	St.	Code	Name	Chart
1.	15		5,147		R77 G23 B11	
2.	17		3,605		R255 G185 B187	
3.	16		1,728		R255 G136 B134	
4.	14		2,187		R255 G190 B167	
5.	13		4,554		R189 G226 B235	
6.	2		2,774		R209 G78 B71	
7.	1		175		R47 G153 B67	
8.	3		904		R237 G230 B212	
9.	4		323		R255 G125 B138	
10.	5		1,461		R255 G189 B188	
11.	6		1,355		R255 G162 B91	
12.	9		1,265		R211 G252 B255	
13.	10		1,067		R88 G166 B127	
14.	11		2,134		R163 G184 B196	
15.	7		378		R255 G168 B164	
16.	12		1,027		R255 G199 B116	
17.	8		669	8 Black		Default

Production Worksheet

Wilcom EmbroideryStudio - Designing



Design: 7

Title:

Stitches: 37,435
Height: 6.33 in
Width: 7.50 in
Colors: 17
Colorway: Colorway 1
Zoom: 1:1



Production Worksheet

Wilcom EmbroideryStudio - Designing



Design: **7**

Title:

Stitches: 37,435
 Height: 6.33 in
 Width: 7.50 in
 Colors: 17
 Colorway: Colorway 1
 Zoom: 1:1

Machine format: Tajima
 Color changes: 16
 Stops: 17
 Trims: 63
 Appliqués: 0
 Left: 90.8 mm
 Right: 99.7 mm
 Up: 95.8 mm
 Down: 64.9 mm
 EndX: 0.00 in
 EndY: 0.00 in
 Area 47.44 in²
 Max stitch: 11.8 mm
 Min stitch: 0.0 mm
 Max jump: 7.0 mm
 Total thread: 721.54ft
 Total bobbin: 278.71ft

Stop Sequence:

#	N#	Color	St.	Code	Name	Chart
1.	15		6,535		R77 G23 B11	
2.	17		4,697		R255 G185 B187	
3.	16		1,602		R255 G136 B134	
4.	14		2,816		R255 G190 B167	
5.	13		6,026		R189 G226 B235	
6.	2		3,270		R209 G78 B71	
7.	1		199		R47 G153 B67	
8.	3		1,029		R237 G230 B212	
9.	4		375		R255 G125 B138	
10.	5		1,735		R255 G189 B188	
11.	6		1,618		R255 G162 B91	
12.	9		1,487		R211 G252 B255	
13.	10		1,274		R88 G166 B127	
14.	11		2,443		R163 G184 B196	
15.	7		422		R255 G168 B164	
16.	12		1,150		R255 G199 B116	
17.	8		755	8 Black		Default