

Production Worksheet

Wilcom EmbroideryStudio - Designing



Design: **3**

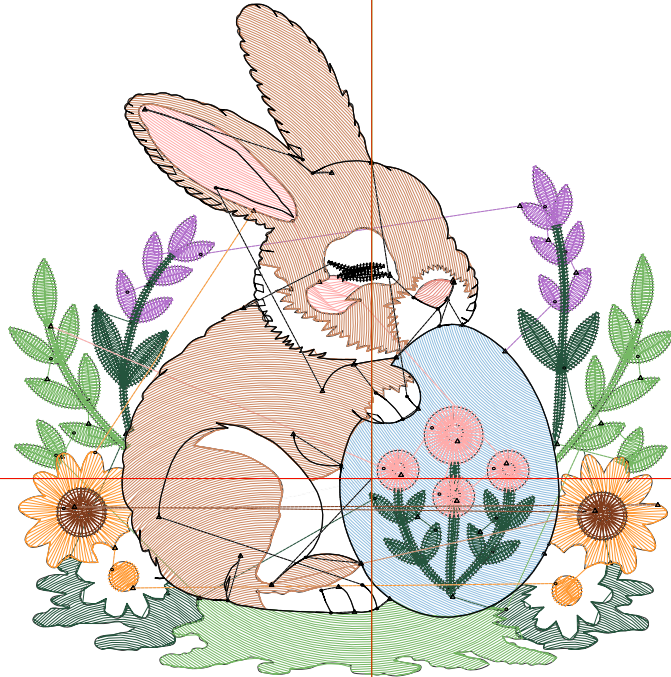
Title:

Stitches: 13,891
 Height: 3.50 in
 Width: 3.47 in
 Colors: 11
 Colorway: Colorway 1
 Zoom: 1:1

Machine format: Tajima
 Color changes: 10
 Stops: 11
 Trims: 59
 Appliqués: 0
 Left: 48.1 mm
 Right: 40.1 mm
 Up: 62.8 mm
 Down: 26.1 mm
 EndX: 0.00 in
 EndY: 0.00 in
 Area: 12.14 in²
 Max stitch: 9.2 mm
 Min stitch: 0.0 mm
 Max jump: 7.0 mm
 Total thread: 195.08ft
 Total bobbin: 59.45ft

Stop Sequence:

#	N#	Color	St.	Code	Name	Chart
1.	9		1,841	9	White	Default
2.	3		1,405		R144 G190 B224	
3.	5		708		R179 G112 B204	
4.	2		2,165		R36 G84 B61	
5.	11		1,926		R118 G184 B101	
6.	7		811		R255 G171 B170	
7.	12		682	12	Orange	Default
8.	4		311		R128 G60 B28	
9.	6		3,074		R204 G136 B99	
10.	10		50		R230 G137 B126	
11.	8		916	8	Black	Default



Production Worksheet

Wilcom EmbroideryStudio - Designing



Design: **4**

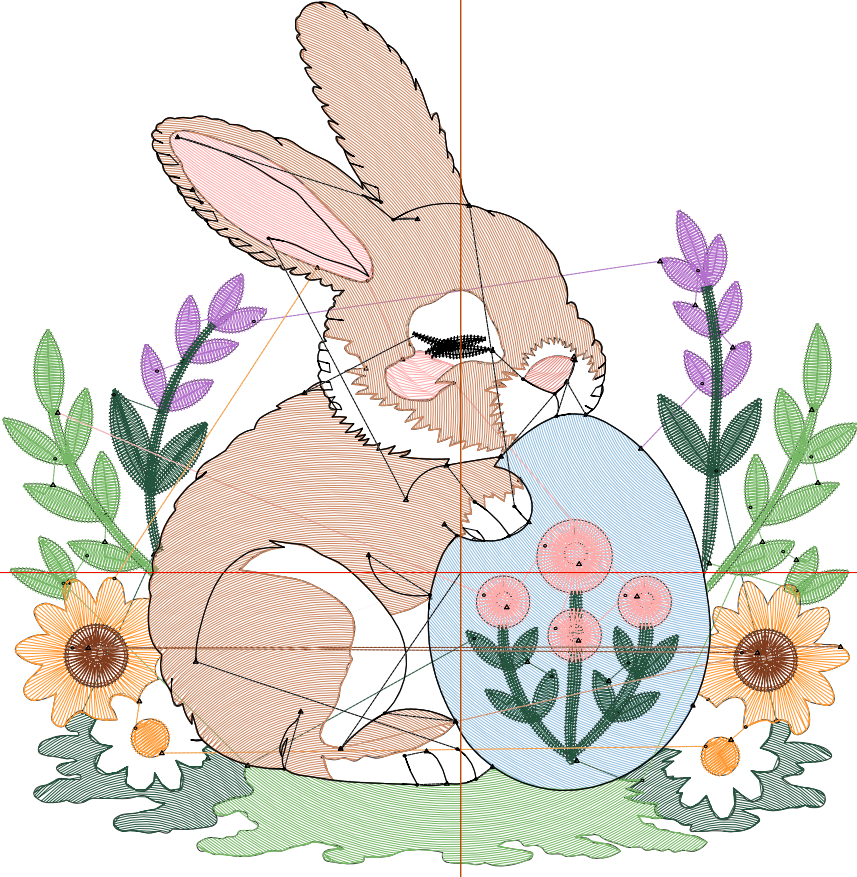
Title:

Stitches: 19,173
 Height: 4.50 in
 Width: 4.46 in
 Colors: 11
 Colorway: Colorway 1
 Zoom: 1:1

Machine format: Tajima
 Color changes: 10
 Stops: 11
 Trims: 64
 Appliqués: 0
 Left: 60.6 mm
 Right: 52.7 mm
 Up: 75.5 mm
 Down: 38.8 mm
 EndX: 0.00 in
 EndY: 0.00 in
 Area: 20.06 in²
 Max stitch: 11.6 mm
 Min stitch: 0.0 mm
 Max jump: 6.9 mm
 Total thread: 286.95ft
 Total bobbin: 93.35ft

Stop Sequence:

#	N#	Color	St.	Code	Name	Chart
1.	9		2,521	9	White	Default
2.	3		2,220		R144 G190 B224	
3.	5		861		R179 G112 B204	
4.	2		2,814		R36 G84 B61	
5.	11		2,577		R118 G184 B101	
6.	7		1,077		R255 G171 B170	
7.	12		921	12	Orange	Default
8.	4		383		R128 G60 B28	
9.	6		4,647		R204 G136 B99	
10.	10		62		R230 G137 B126	
11.	8		1,088	8	Black	Default



Production Worksheet

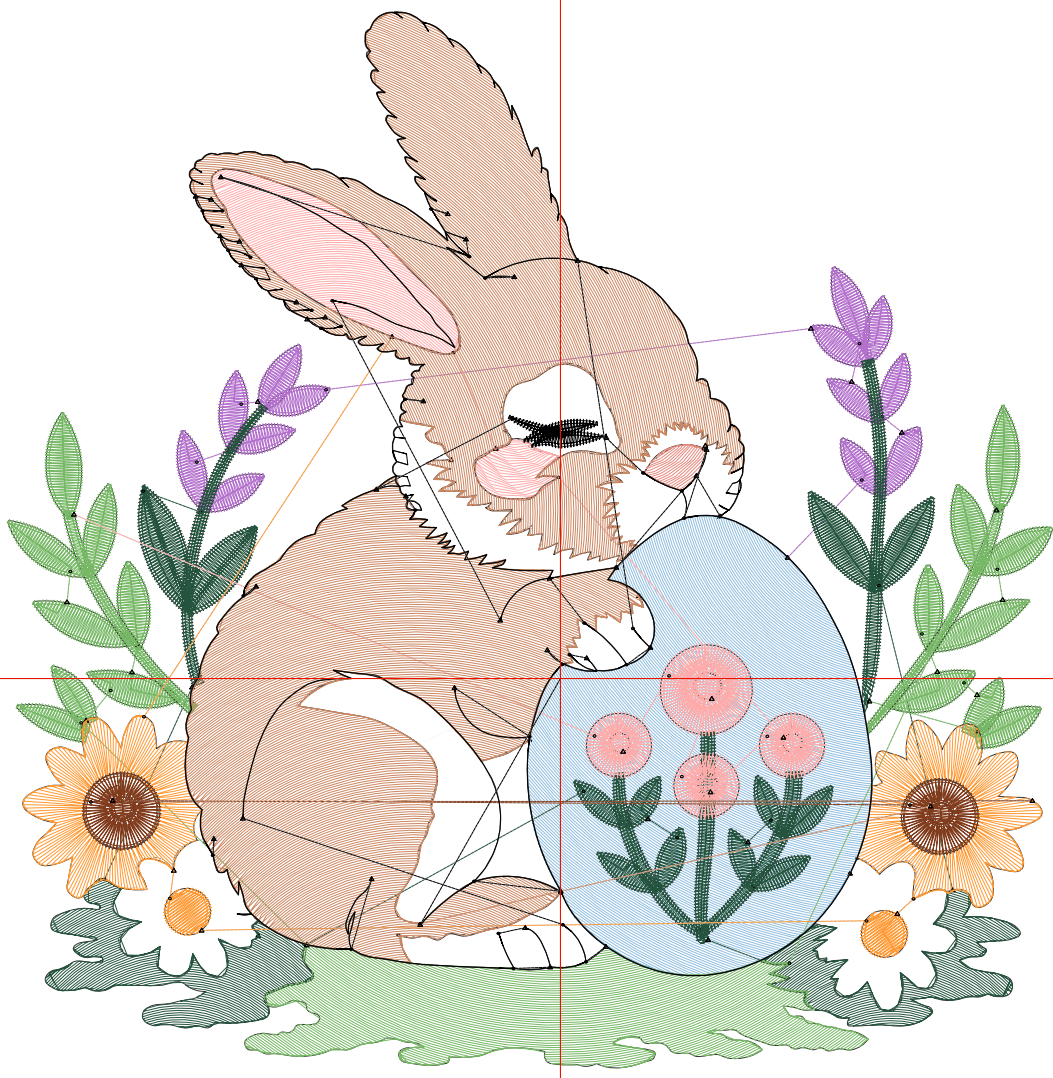
Wilcom EmbroideryStudio - Designing



Design: **5**

Title:

Stitches: 25,678
Height: 5.50 in
Width: 5.45 in
Colors: 11
Colorway: Colorway 1
Zoom: 1:1



Production Worksheet

Wilcom EmbroideryStudio - Designing



Design: **5**

Title:

Stitches: 25,678
 Height: 5.50 in
 Width: 5.45 in
 Colors: 11
 Colorway: Colorway 1
 Zoom: 1:1

Machine format: Tajima
 Color changes: 10
 Stops: 11
 Trims: 78
 Appliqués: 0
 Left: 73.2 mm
 Right: 65.2 mm
 Up: 88.2 mm
 Down: 51.5 mm
 EndX: 0.00 in
 EndY: 0.00 in
 Area 29.96 in²
 Max stitch: 10.3 mm
 Min stitch: 0.0 mm
 Max jump: 7.0 mm
 Total thread: 400.81ft
 Total bobbin: 135.53ft

Stop Sequence:

#	N#	Color	St.	Code	Name	Chart
1.	9		3,342	9	White	Default
2.	3		3,236		R144 G190 B224	
3.	5		1,032		R179 G112 B204	
4.	2		3,555		R36 G84 B61	
5.	11		3,305		R118 G184 B101	
6.	7		1,587		R255 G171 B170	
7.	12		1,204	12	Orange	Default
8.	4		466		R128 G60 B28	
9.	6		6,552		R204 G136 B99	
10.	10		83		R230 G137 B126	
11.	8		1,314	8	Black	Default

Production Worksheet

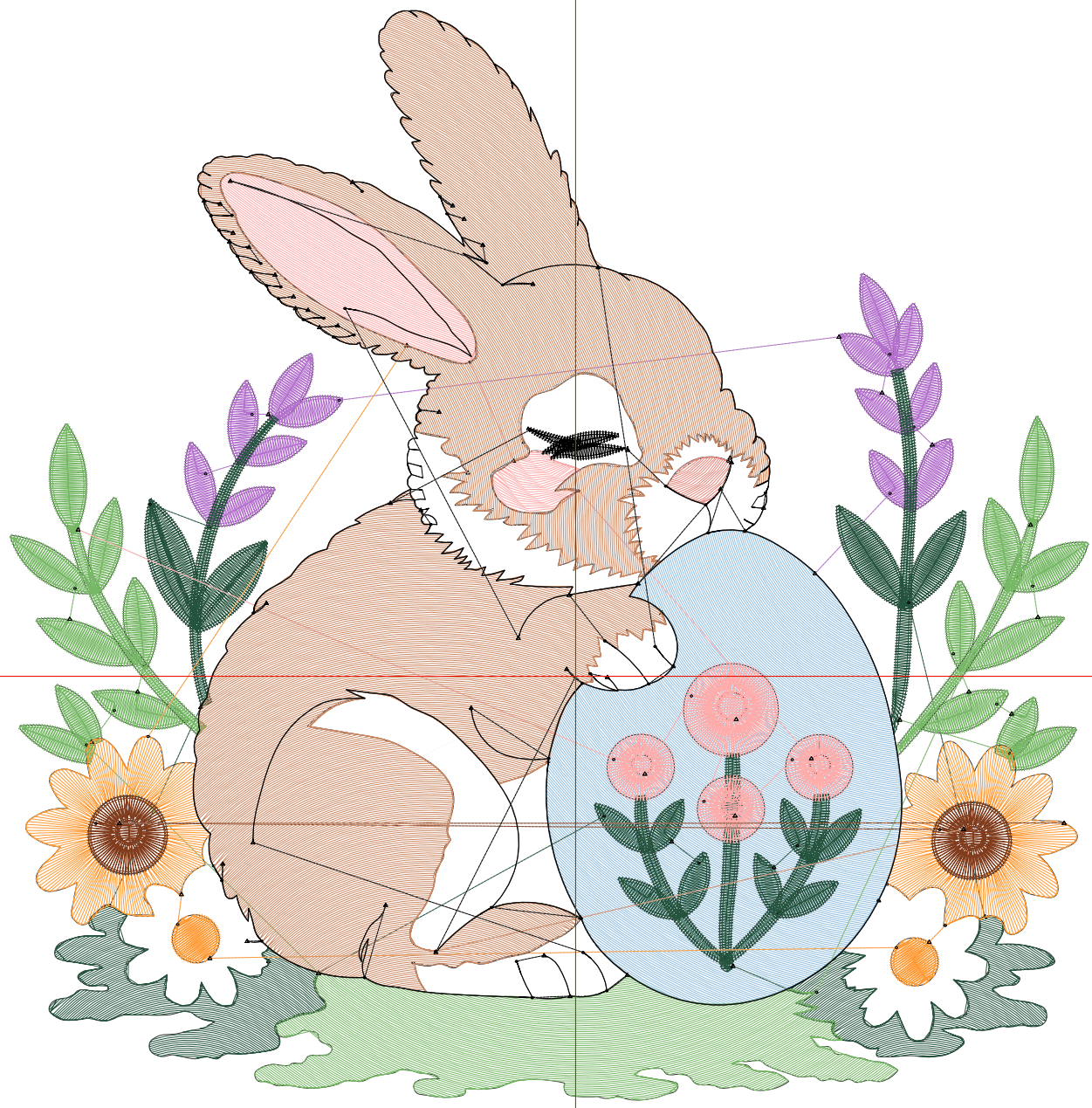
Wilcom EmbroideryStudio - Designing



Design: **6**

Title:

Stitches: 32,476
Height: 6.50 in
Width: 6.44 in
Colors: 11
Colorway: Colorway 1
Zoom: 1:1



Production Worksheet

Wilcom EmbroideryStudio - Designing



Design: **6**

Title:

Stitches: 32,476
 Height: 6.50 in
 Width: 6.44 in
 Colors: 11
 Colorway: Colorway 1
 Zoom: 1:1

Machine format: Tajima
 Color changes: 10
 Stops: 11
 Trims: 86
 Appliqués: 0
 Left: 85.8 mm
 Right: 77.8 mm
 Up: 100.8 mm
 Down: 64.1 mm
 EndX: 0.00 in
 EndY: 0.00 in
 Area 41.83 in²
 Max stitch: 8.9 mm
 Min stitch: 0.0 mm
 Max jump: 7.0 mm
 Total thread: 530.53ft
 Total bobbin: 185.97ft

Stop Sequence:

#	N#	Color	St.	Code	Name	Chart
1.	9		4,355	9	White	Default
2.	3		4,442		R144 G190 B224	
3.	5		1,211		R179 G112 B204	
4.	2		4,315		R36 G84 B61	
5.	11		4,105		R118 G184 B101	
6.	7		1,688		R255 G171 B170	
7.	12		1,514	12	Orange	Default
8.	4		542		R128 G60 B28	
9.	6		8,712		R204 G136 B99	
10.	10		104		R230 G137 B126	
11.	8		1,486	8	Black	Default

Production Worksheet

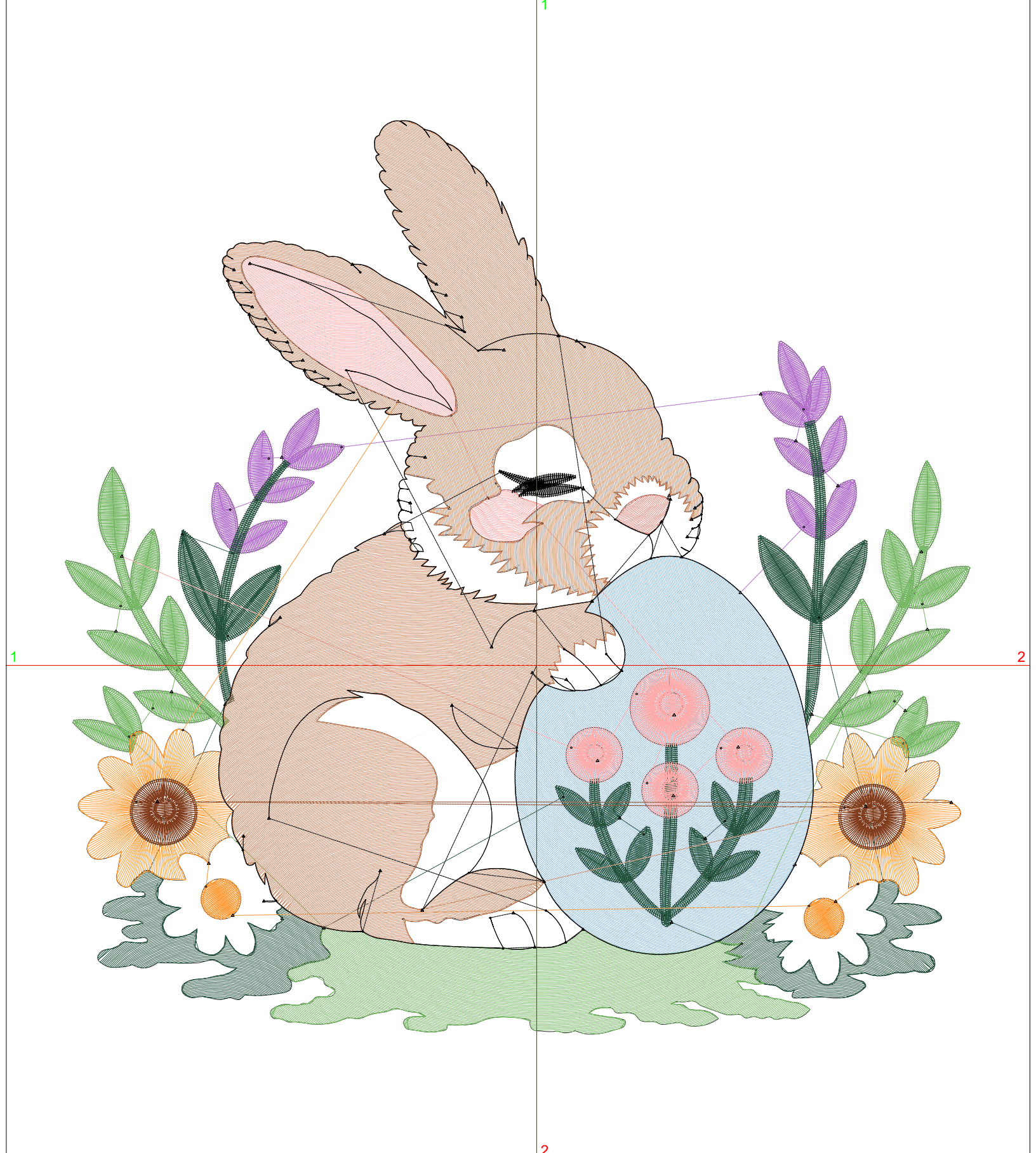
Wilcom EmbroideryStudio - Designing



Design: **7**

Title:

Stitches: 40,700
Height: 7.50 in
Width: 7.43 in
Colors: 11
Colorway: Colorway 1
Zoom: 1:1



Production Worksheet

Wilcom EmbroideryStudio - Designing



Design: **7**

Title:

Stitches: 40,700
 Height: 7.50 in
 Width: 7.43 in
 Colors: 11
 Colorway: Colorway 1
 Zoom: 1:1

Machine format: Tajima
 Color changes: 10
 Stops: 11
 Trims: 95
 Appliqués: 0
 Left: 98.3 mm
 Right: 90.4 mm
 Up: 113.6 mm
 Down: 76.8 mm
 EndX: 0.00 in
 EndY: 0.00 in
 Area 55.68 in²
 Max stitch: 10.3 mm
 Min stitch: 0.0 mm
 Max jump: 6.9 mm
 Total thread: 683.57ft
 Total bobbin: 244.68ft

Stop Sequence:

#	N#	Color	St.	Code	Name	Chart
1.	9		5,475	9	White	Default
2.	3		5,825		R144 G190 B224	
3.	5		1,388		R179 G112 B204	
4.	2		5,121		R36 G84 B61	
5.	11		4,956		R118 G184 B101	
6.	7		2,450		R255 G171 B170	
7.	12		1,864	12	Orange	Default
8.	4		632		R128 G60 B28	
9.	6		11,203		R204 G136 B99	
10.	10		134		R230 G137 B126	
11.	8		1,650	8	Black	Default