

Production Worksheet

Wilcom EmbroideryStudio - Designing



Design: **3**

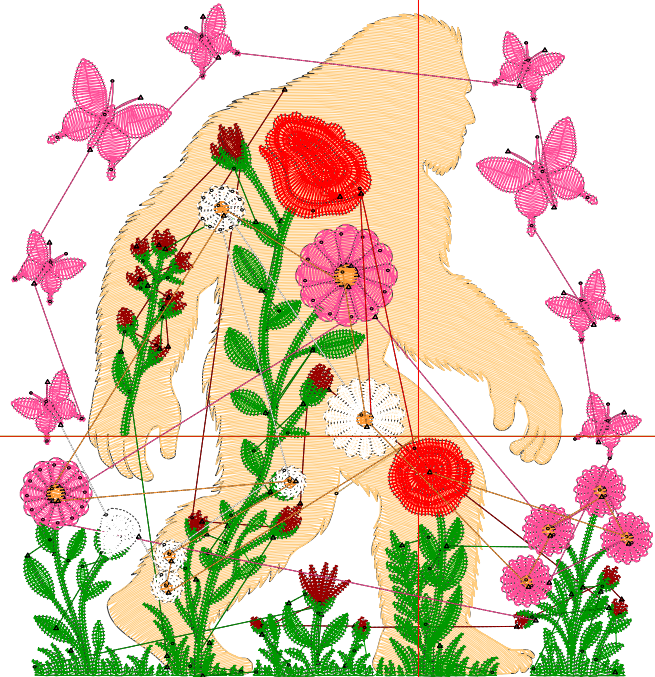
Title:

Stitches: 28,229
 Height: 3.50 in
 Width: 3.34 in
 Colors: 7
 Colorway: Colorway 1
 Zoom: 1:1

Machine format: Tajima
 Color changes: 6
 Stops: 7
 Trims: 155
 Appliqués: 0
 Left: 53.9 mm
 Right: 30.9 mm
 Up: 57.2 mm
 Down: 31.7 mm
 EndX: 0.00 in
 EndY: 0.00 in
 Area: 11.69 in²
 Max stitch: 11.9 mm
 Min stitch: 0.0 mm
 Max jump: 7.0 mm
 Total thread: 356.58ft
 Total bobbin: 100.18ft

Stop Sequence:

#	N#	Color	St.	Code	Name	Chart
1.	16		8,903	16	Sand	Default
2.	11		1,578	11	Dark Red	Default
3.	1		8,800	1	Dark Green	Default
4.	4		5,140	R255 G78 B152		
5.	9		2,013	9	White	Default
6.	3		1,474	3	Red	Default
7.	12		319	12	Orange	Default



Production Worksheet

Wilcom EmbroideryStudio - Designing



Design: **4**

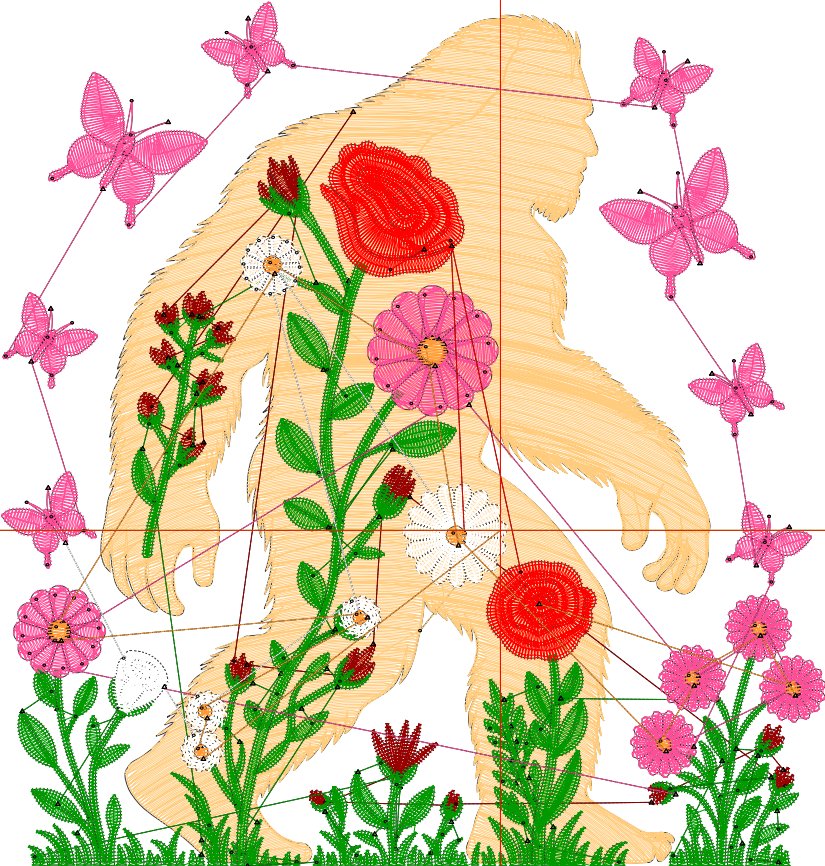
Title:

Stitches: 43,379
 Height: 4.50 in
 Width: 4.29 in
 Colors: 7
 Colorway: Colorway 1
 Zoom: 1:1

Machine format: Tajima
 Color changes: 6
 Stops: 7
 Trims: 170
 Appliqués: 0
 Left: 66.0 mm
 Right: 43.0 mm
 Up: 69.9 mm
 Down: 44.4 mm
 EndX: 0.00 in
 EndY: 0.00 in
 Area: 19.33 in²
 Max stitch: 8.9 mm
 Min stitch: 0.0 mm
 Max jump: 6.9 mm
 Total thread: 589.52ft
 Total bobbin: 179.31ft

Stop Sequence:

#	N#	Color	St.	Code	Name	Chart
1.	16		19,494	16	Sand	Default
2.	11		1,964	11	Dark Red	Default
3.	1		10,990	1	Dark Green	Default
4.	4		6,278	R255 G78 B152		
5.	9		2,412	9	White	Default
6.	3		1,879	3	Red	Default
7.	12		360	12	Orange	Default



Production Worksheet

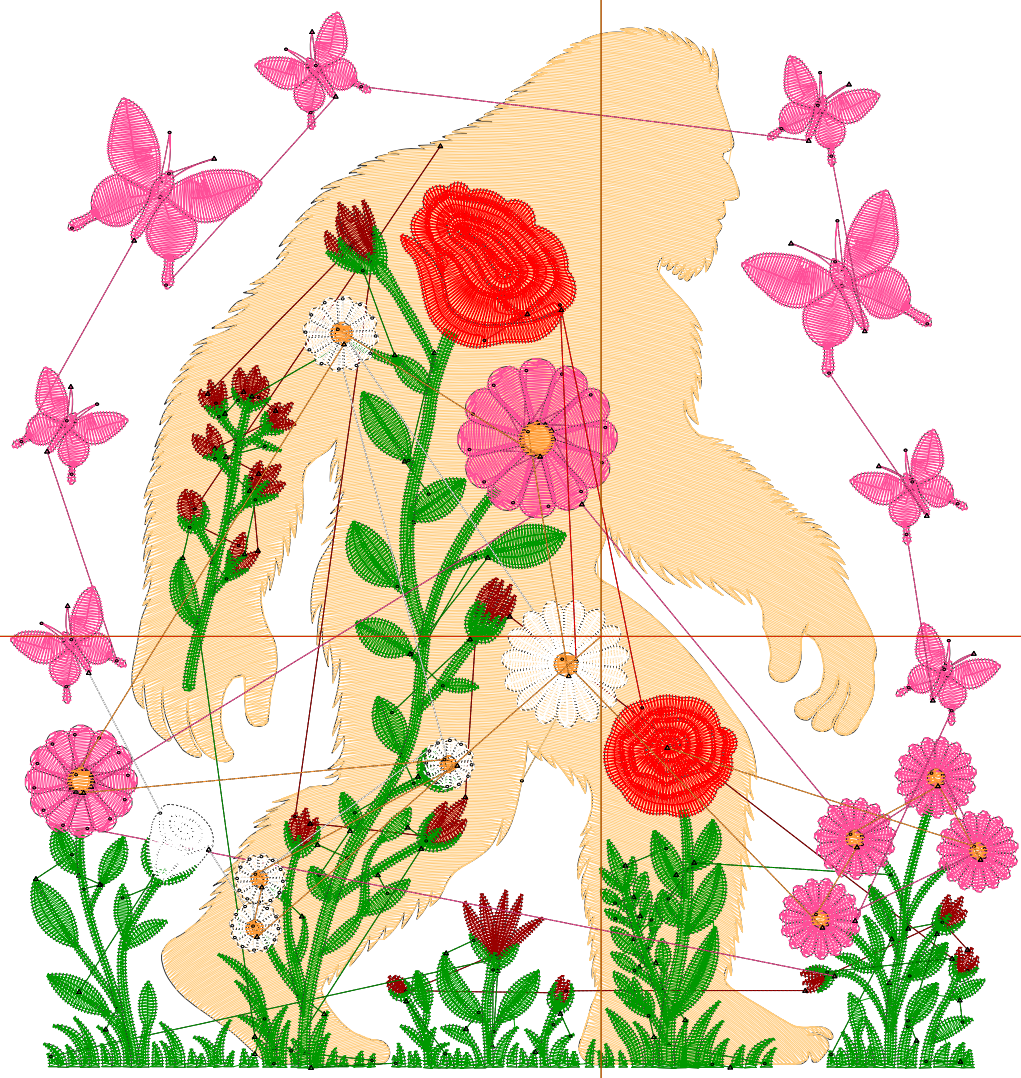
Wilcom EmbroideryStudio - Designing



Design: **5**

Title:

Stitches: 48,753
Height: 5.50 in
Width: 5.25 in
Colors: 7
Colorway: Colorway 1
Zoom: 1:1



Production Worksheet

Wilcom EmbroideryStudio - Designing



Design: **5**

Title:

Stitches: 48,753
 Height: 5.50 in
 Width: 5.25 in
 Colors: 7
 Colorway: Colorway 1
 Zoom: 1:1

Machine format: Tajima
 Color changes: 6
 Stops: 7
 Trims: 208
 Appliqués: 0
 Left: 78.1 mm
 Right: 55.1 mm
 Up: 82.6 mm
 Down: 57.1 mm
 EndX: 0.00 in
 EndY: 0.00 in
 Area 28.87 in²
 Max stitch: 7.0 mm
 Min stitch: 0.0 mm
 Max jump: 7.0 mm
 Total thread: 696.14ft
 Total bobbin: 221.59ft

Stop Sequence:

#	N#	Color	St.	Code	Name	Chart
1.	16		20,013	16	Sand	Default
2.	11		2,317	11	Dark Red	Default
3.	1		13,168	1	Dark Green	Default
4.	4		7,488		R255 G78 B152	
5.	9		3,069	9	White	Default
6.	3		2,281	3	Red	Default
7.	12		415	12	Orange	Default

Production Worksheet

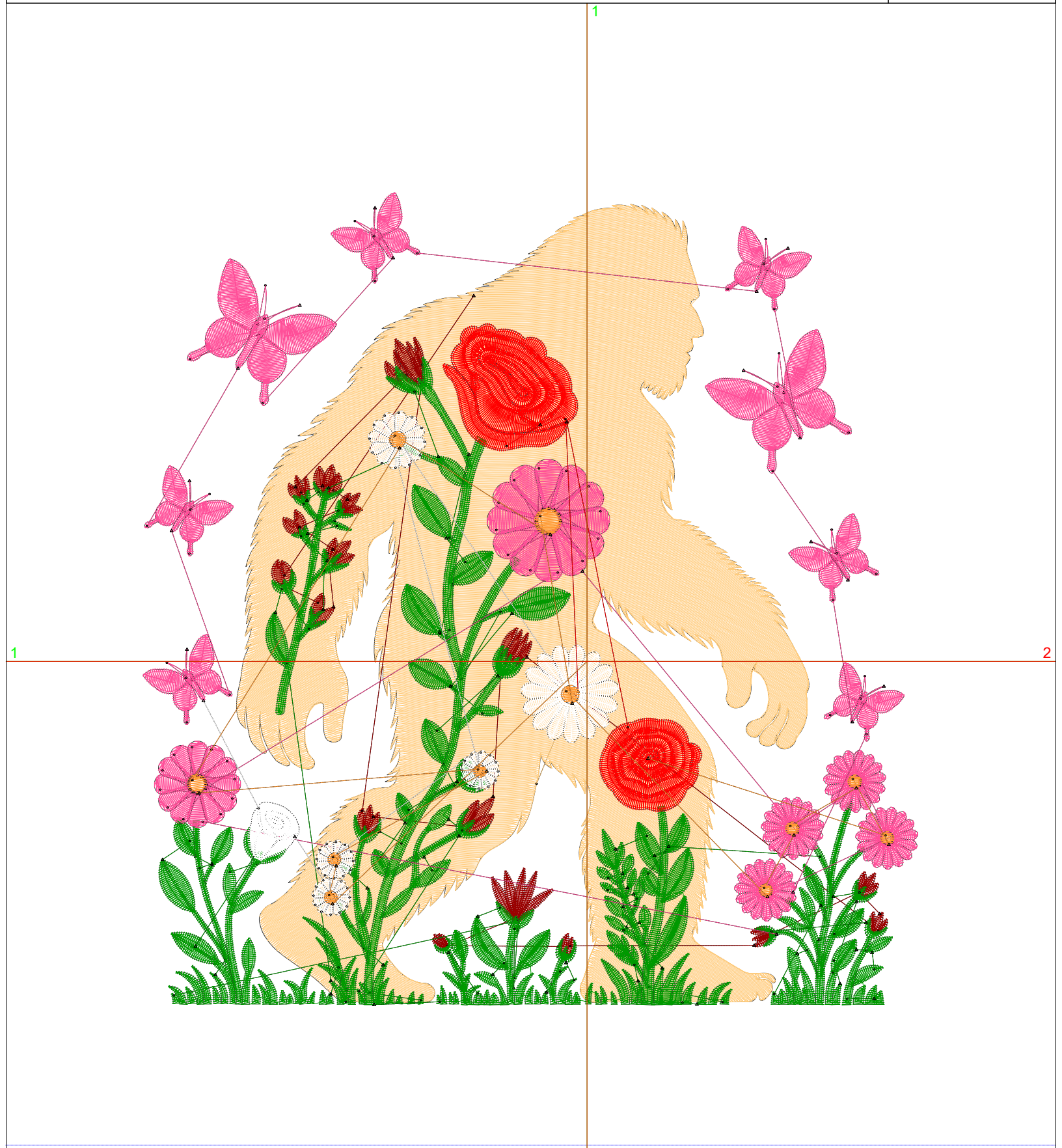
Wilcom EmbroideryStudio - Designing



Design: **6**

Title:

Stitches: 60,528
Height: 6.50 in
Width: 6.20 in
Colors: 7
Colorway: Colorway 1
Zoom: 1:1



Production Worksheet

Wilcom EmbroideryStudio - Designing



Design: **6**

Title:

Stitches: 60,528
 Height: 6.50 in
 Width: 6.20 in
 Colors: 7
 Colorway: Colorway 1
 Zoom: 1:1

Machine format: Tajima
 Color changes: 6
 Stops: 7
 Trims: 213
 Appliqués: 0
 Left: 90.2 mm
 Right: 67.2 mm
 Up: 95.3 mm
 Down: 69.8 mm
 EndX: 0.00 in
 EndY: 0.00 in
 Area 40.32 in²
 Max stitch: 8.1 mm
 Min stitch: 0.0 mm
 Max jump: 7.0 mm
 Total thread: 906.79ft
 Total bobbin: 300.64ft

Stop Sequence:

#	N#	Color	St.	Code	Name	Chart
1.	16		27,130	16	Sand	Default
2.	11		2,663	11	Dark Red	Default
3.	1		15,280	1	Dark Green	Default
4.	4		8,744		R255 G78 B152	
5.	9		3,516	9	White	Default
6.	3		2,705	3	Red	Default
7.	12		488	12	Orange	Default

Production Worksheet

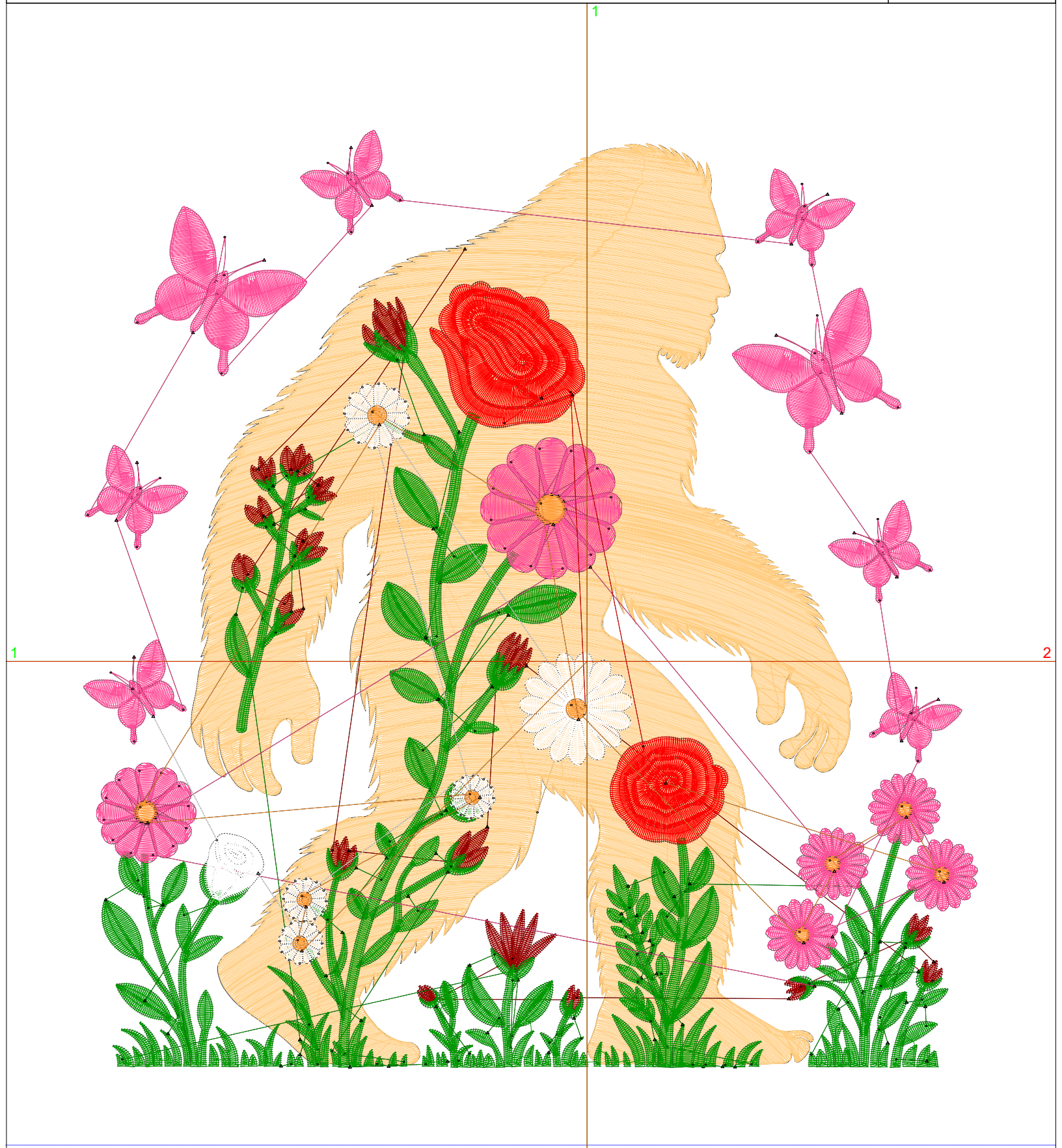
Wilcom EmbroideryStudio - Designing



Design: **7**

Title:

Stitches: 84,698
Height: 7.50 in
Width: 7.15 in
Colors: 7
Colorway: Colorway 1
Zoom: 1:1



Production Worksheet

Wilcom EmbroideryStudio - Designing



Design: **7**

Title:

Stitches: 84,698
 Height: 7.50 in
 Width: 7.15 in
 Colors: 7
 Colorway: Colorway 1
 Zoom: 1:1

Machine format: Tajima
 Color changes: 6
 Stops: 7
 Trims: 222
 Appliqués: 0
 Left: 102.3 mm
 Right: 79.4 mm
 Up: 108.0 mm
 Down: 82.5 mm
 EndX: 0.00 in
 EndY: 0.00 in
 Area 53.67 in²
 Max stitch: 9.3 mm
 Min stitch: 0.0 mm
 Max jump: 7.0 mm
 Total thread: 1316.97ft
 Total bobbin: 449.73ft

Stop Sequence:

#	N#	Color	St.	Code	Name	Chart
1.	16		46,899	16	Sand	Default
2.	11		2,970	11	Dark Red	Default
3.	1		17,442	1	Dark Green	Default
4.	4		9,805		R255 G78 B152	
5.	9		3,907	9	White	Default
6.	3		3,126	3	Red	Default
7.	12		547	12	Orange	Default