

Production Worksheet

Wilcom EmbroideryStudio - Designing



Design: **3**

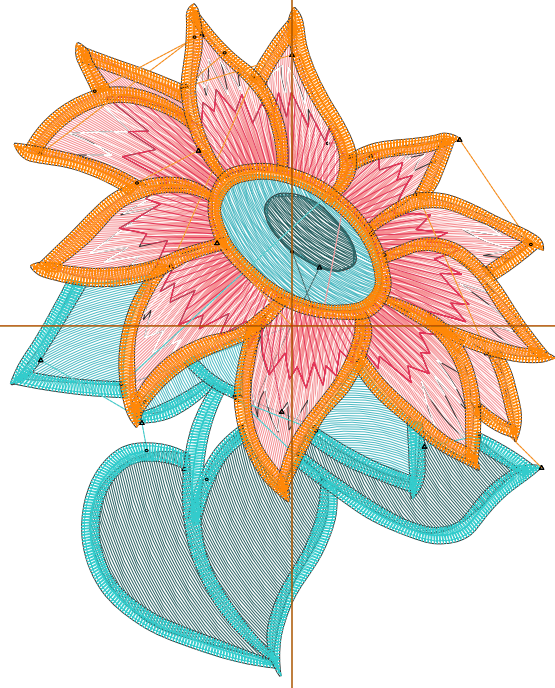
Title:

Stitches: 13,320
Height: 3.50 in
Width: 2.84 in
Colors: 7
Colorway: Colorway 1
Zoom: 1:1

Machine format: Tajima
Color changes: 6
Stops: 7
Trims: 27
Appliqués: 0
Left: 37.2 mm
Right: 34.8 mm
Up: 42.6 mm
Down: 46.3 mm
EndX: 0.00 in
EndY: 0.00 in
Area 9.93 in²
Max stitch: 8.2 mm
Min stitch: 0.0 mm
Max jump: 6.6 mm
Total thread: 219.43ft
Total bobbin: 76.88ft

Stop Sequence:

#	N#	Color	St.	Code	Name	Chart
1.	6		1,291		R80 G187 B196	
2.	4		1,563		R45 G101 B102	
3.	3		3,247		R245 G141 B145	
4.	9		905	9	White	Default
5.	1		774		R227 G53 B88	
6.	5		1,828	5	Aqua	Default
7.	2		3,710		R255 G135 B7	



Production Worksheet

Wilcom EmbroideryStudio - Designing



Design: **4**

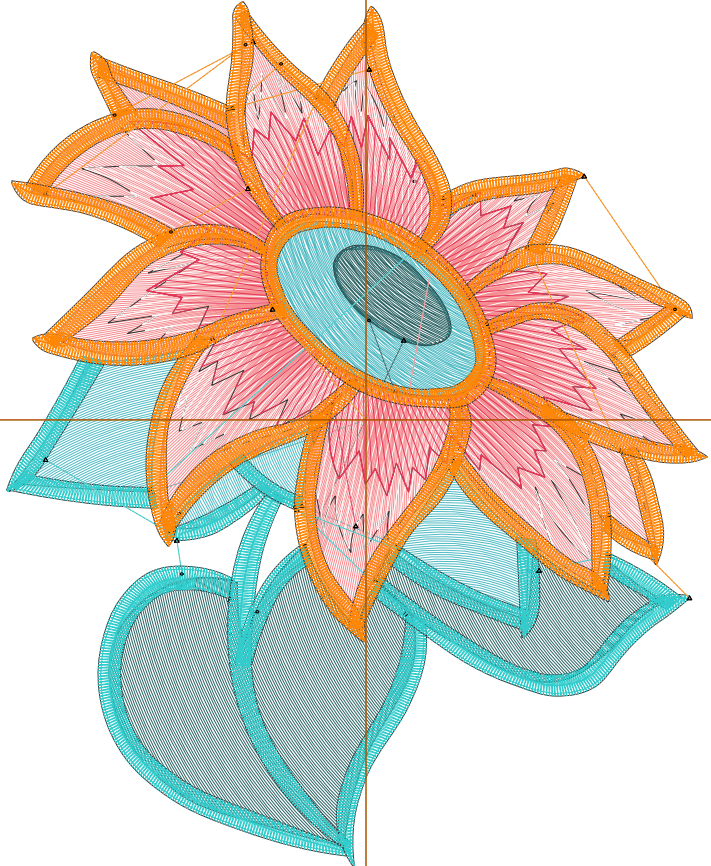
Title:

Stitches: 18,792
 Height: 4.50 in
 Width: 3.65 in
 Colors: 7
 Colorway: Colorway 1
 Zoom: 1:1

Machine format: Tajima
 Color changes: 6
 Stops: 7
 Trims: 27
 Appliqués: 0
 Left: 47.5 mm
 Right: 45.1 mm
 Up: 55.3 mm
 Down: 59.0 mm
 EndX: 0.00 in
 EndY: 0.00 in
 Area: 16.42 in²
 Max stitch: 10.7 mm
 Min stitch: 0.0 mm
 Max jump: 6.8 mm
 Total thread: 334.53ft
 Total bobbin: 123.81ft

Stop Sequence:

#	N#	Color	St.	Code	Name	Chart
1.	6		1,931	R80	G187 B196	
2.	4		2,418	R45	G101 B102	
3.	3		4,983	R245	G141 B145	
4.	9		1,267	9	White	Default
5.	1		1,007	R227	G53 B88	
6.	5		2,369	5	Aqua	Default
7.	2		4,815	R255	G135 B7	



Production Worksheet

Wilcom EmbroideryStudio - Designing



Design: **5**

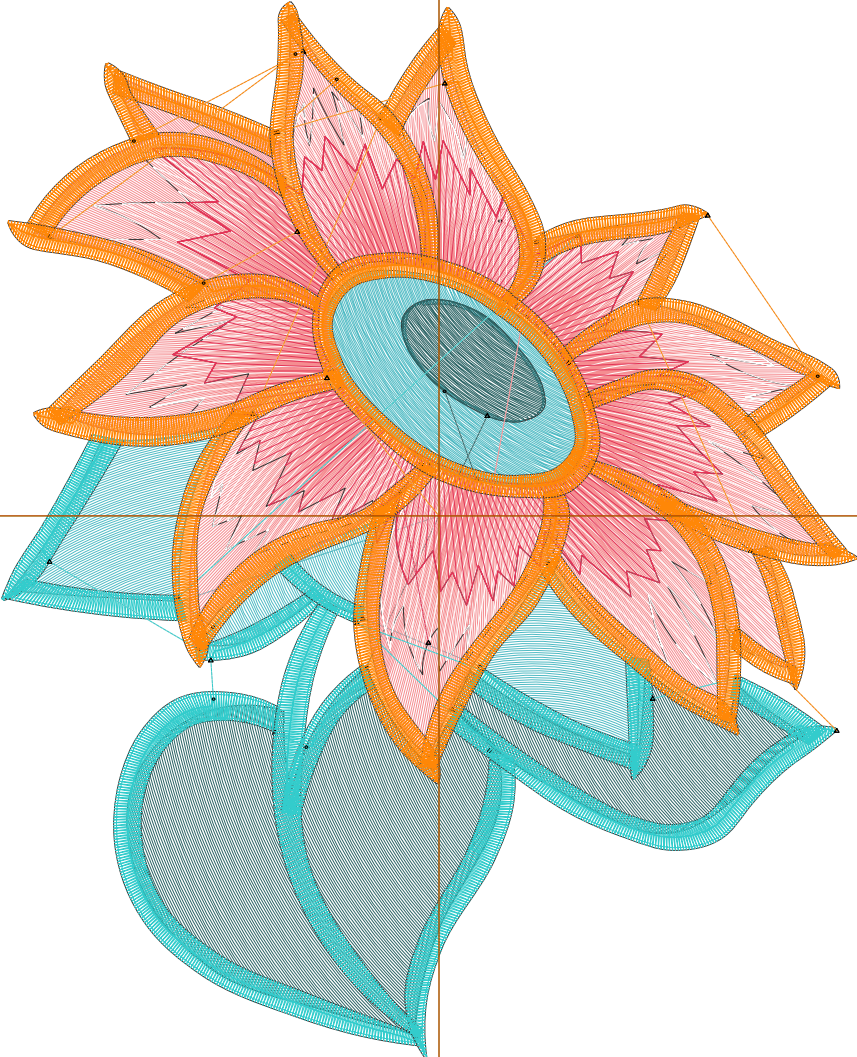
Title:

Stitches: 25,133
 Height: 5.50 in
 Width: 4.46 in
 Colors: 7
 Colorway: Colorway 1
 Zoom: 1:1

Machine format: Tajima
 Color changes: 6
 Stops: 7
 Trims: 27
 Appliqués: 0
 Left: 57.8 mm
 Right: 55.4 mm
 Up: 68.0 mm
 Down: 71.7 mm
 EndX: 0.00 in
 EndY: 0.00 in
 Area: 24.53 in²
 Max stitch: 11.7 mm
 Min stitch: 0.0 mm
 Max jump: 6.9 mm
 Total thread: 476.13ft
 Total bobbin: 183.06ft

Stop Sequence:

#	N#	Color	St.	Code	Name	Chart
1.	6		2,653		R80 G187 B196	
2.	4		3,395		R45 G101 B102	
3.	3		7,086		R245 G141 B145	
4.	9		1,737	9	White	Default
5.	1		1,335		R227 G53 B88	
6.	5		2,946	5	Aqua	Default
7.	2		5,979		R255 G135 B7	



Production Worksheet

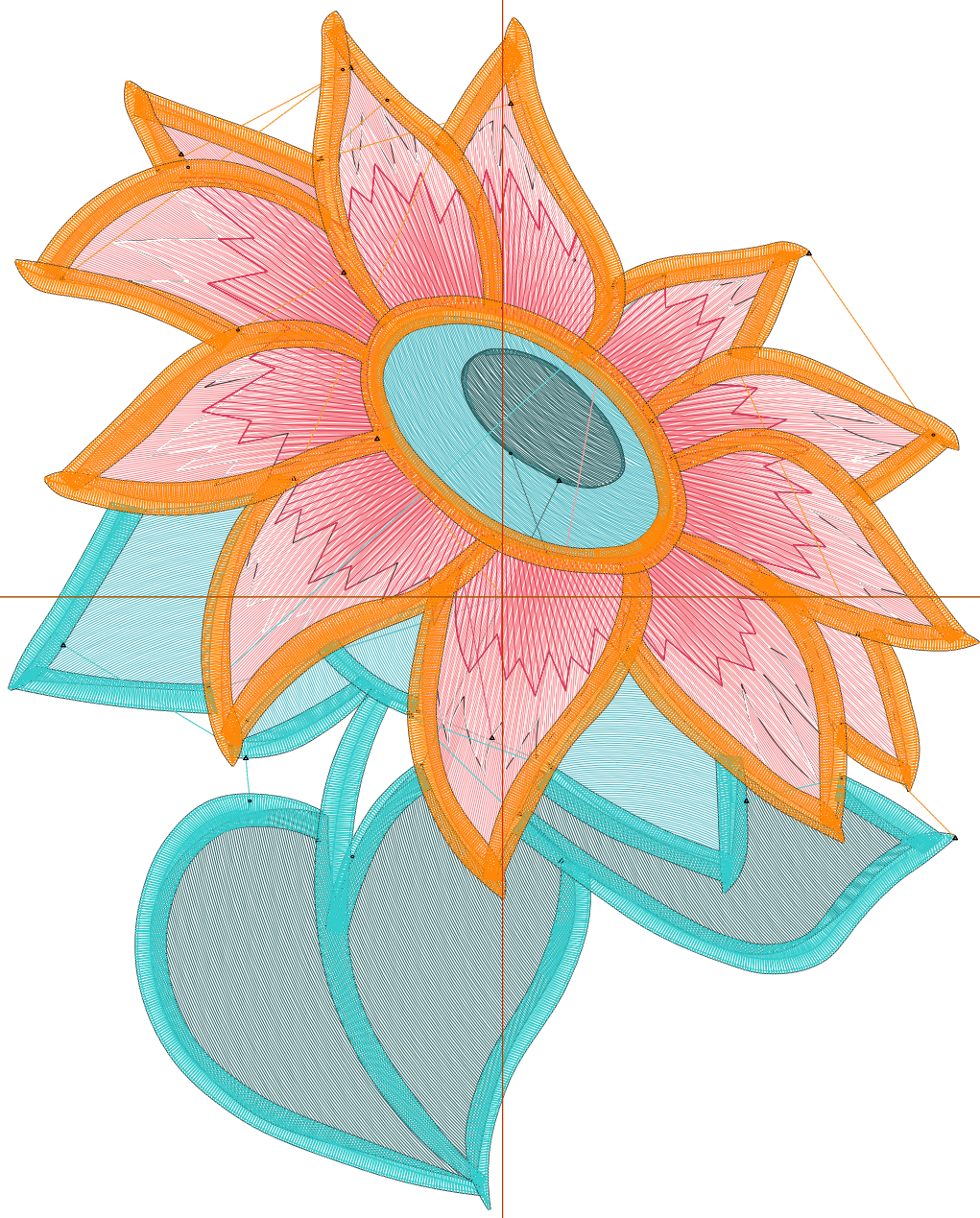
Wilcom EmbroideryStudio - Designing



Design: **6**

Title:

Stitches: 32,318
Height: 6.50 in
Width: 5.27 in
Colors: 7
Colorway: Colorway 1
Zoom: 1:1



Production Worksheet

Wilcom EmbroideryStudio - Designing



Design: **6**

Title:

Stitches: 32,318
 Height: 6.50 in
 Width: 5.27 in
 Colors: 7
 Colorway: Colorway 1
 Zoom: 1:1

Machine format: Tajima
 Color changes: 6
 Stops: 7
 Trims: 28
 Appliqués: 0
 Left: 68.1 mm
 Right: 65.7 mm
 Up: 80.7 mm
 Down: 84.4 mm
 EndX: 0.00 in
 EndY: 0.00 in
 Area 34.25 in²
 Max stitch: 7.0 mm
 Min stitch: 0.0 mm
 Max jump: 7.0 mm
 Total thread: 643.54ft
 Total bobbin: 254.33ft

Stop Sequence:

#	N#	Color	St.	Code	Name	Chart
1.	6		3,480		R80 G187 B196	
2.	4		4,600		R45 G101 B102	
3.	3		9,560		R245 G141 B145	
4.	9		2,270	9	White	Default
5.	1		1,701		R227 G53 B88	
6.	5		3,530	5	Aqua	Default
7.	2		7,175		R255 G135 B7	

Production Worksheet

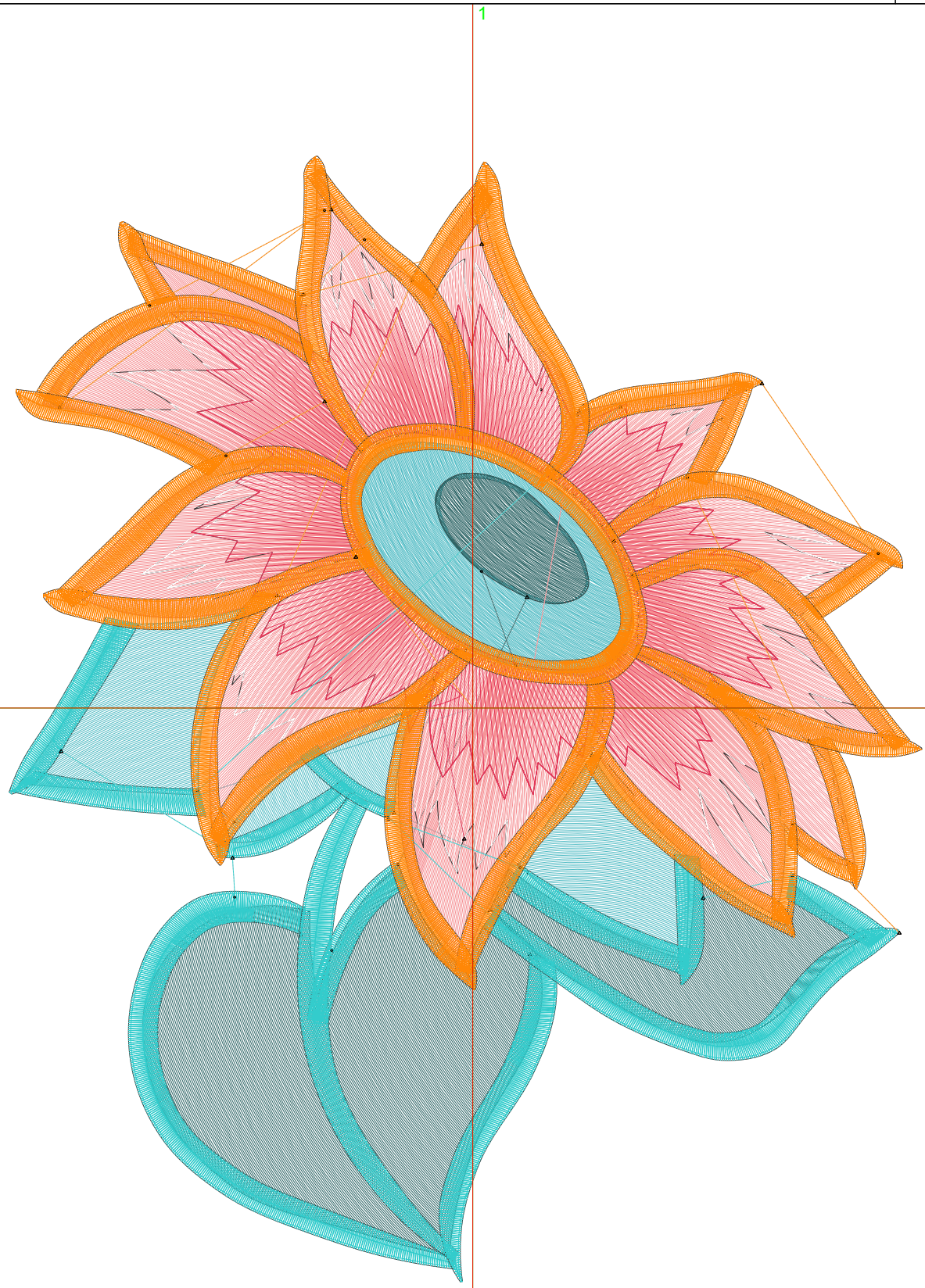
Wilcom EmbroideryStudio - Designing



Design: **7**

Title:

Stitches: 40,515
Height: 7.50 in
Width: 6.08 in
Colors: 7
Colorway: Colorway 1
Zoom: 1:1



Production Worksheet

Wilcom EmbroideryStudio - Designing



Design: **7**

Title:

Stitches: 40,515
 Height: 7.50 in
 Width: 6.08 in
 Colors: 7
 Colorway: Colorway 1
 Zoom: 1:1

Machine format: Tajima
 Color changes: 6
 Stops: 7
 Trims: 27
 Appliqués: 0
 Left: 78.4 mm
 Right: 76.0 mm
 Up: 93.4 mm
 Down: 97.1 mm
 EndX: 0.00 in
 EndY: 0.00 in
 Area 45.61 in²
 Max stitch: 7.0 mm
 Min stitch: 0.0 mm
 Max jump: 7.0 mm
 Total thread: 840.74ft
 Total bobbin: 339.32ft

Stop Sequence:

#	N#	Color	St.	Code	Name	Chart
1.	6		4,503		R80 G187 B196	
2.	4		5,918		R45 G101 B102	
3.	3		12,410		R245 G141 B145	
4.	9		2,887	9	White	Default
5.	1		2,169		R227 G53 B88	
6.	5		4,174	5	Aqua	Default
7.	2		8,452		R255 G135 B7	