

Production Worksheet

Wilcom EmbroideryStudio - Designing



Design: **3**

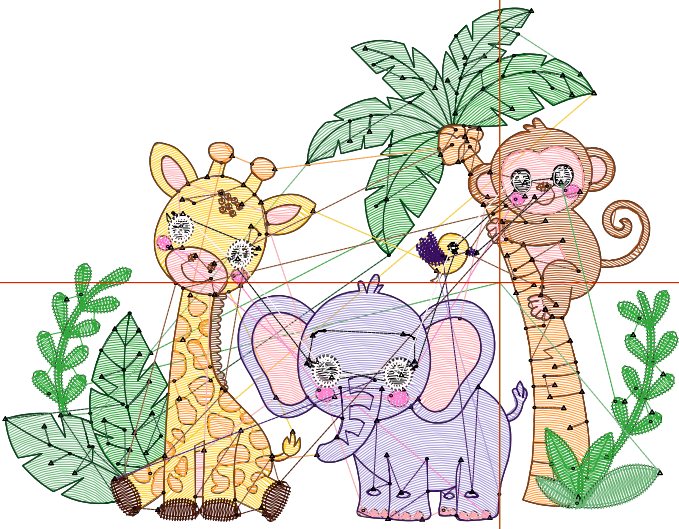
Title:

Stitches: 13,574
 Height: 2.67 in
 Width: 3.51 in
 Colors: 14
 Colorway: Colorway 1
 Zoom: 1:1

Machine format: Tajima
 Color changes: 15
 Stops: 16
 Trims: 162
 Appliqués: 0
 Left: 65.4 mm
 Right: 23.6 mm
 Up: 36.3 mm
 Down: 31.7 mm
 EndX: 0.00 in
 EndY: 0.00 in
 Area 9.37 in²
 Max stitch: 11.4 mm
 Min stitch: 0.0 mm
 Max jump: 6.9 mm
 Total thread: 166.33ft
 Total bobbin: 42.67ft

Stop Sequence:

#	N#	Color	St.	Code	Name	Chart
1.	4		1,490	R50	G168 B60	
2.	3		905	R105	G179 B117	
3.	1		728	R8	G64 B29	
4.	5		1,558	R255	G206 B30	
5.	7		1,583	R169	G154 B214	
6.	12		1,395	12	Orange	Default
7.	8		665	R179	G83 B24	
8.	10		1,226	R255	G168 B174	
9.	11		204	R255	G125 B205	
10.	9		1,285	R125	G64 B29	
11.	2		215	R71	G23 B11	
12.	13		584	R57	G16 B97	
13.	14		355	R0	G0 B0	
14.	6		522	R255	G249 B250	
15.	4		701	R50	G168 B60	
16.	3		156	R105	G179 B117	



Production Worksheet

Wilcom EmbroideryStudio - Designing



Design: **4**

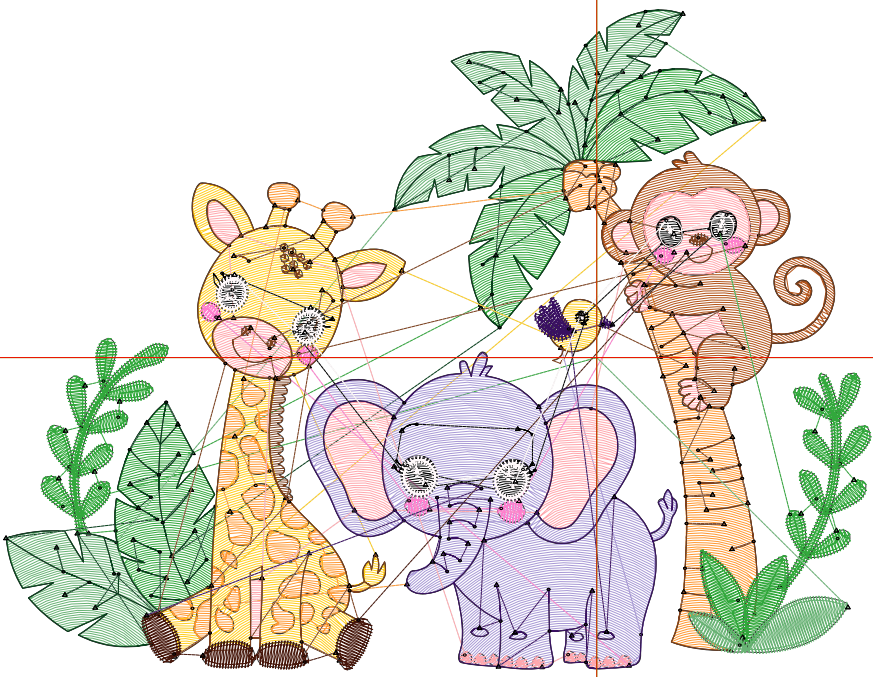
Title:

Stitches: 18,101
 Height: 3.44 in
 Width: 4.51 in
 Colors: 14
 Colorway: Colorway 1
 Zoom: 1:1

Machine format: Tajima
 Color changes: 15
 Stops: 16
 Trims: 186
 Appliqués: 0
 Left: 78.1 mm
 Right: 36.3 mm
 Up: 46.0 mm
 Down: 41.3 mm
 EndX: 0.00 in
 EndY: 0.00 in
 Area: 15.49 in²
 Max stitch: 10.6 mm
 Min stitch: 0.0 mm
 Max jump: 7.0 mm
 Total thread: 232.76ft
 Total bobbin: 64.44ft

Stop Sequence:

#	N#	Color	St.	Code	Name	Chart
1.	4		2,090		R50 G168 B60	
2.	3		1,285		R105 G179 B117	
3.	1		817		R8 G64 B29	
4.	5		2,177		R255 G206 B30	
5.	7		2,344		R169 G154 B214	
6.	12		1,944	12	Orange	Default
7.	8		939		R179 G83 B24	
8.	10		1,621		R255 G168 B174	
9.	11		235		R255 G125 B205	
10.	9		1,516		R125 G64 B29	
11.	2		260		R71 G23 B11	
12.	13		714		R57 G16 B97	
13.	14		443		R0 G0 B0	
14.	6		662		R255 G249 B250	
15.	4		862		R50 G168 B60	
16.	3		190		R105 G179 B117	



Production Worksheet

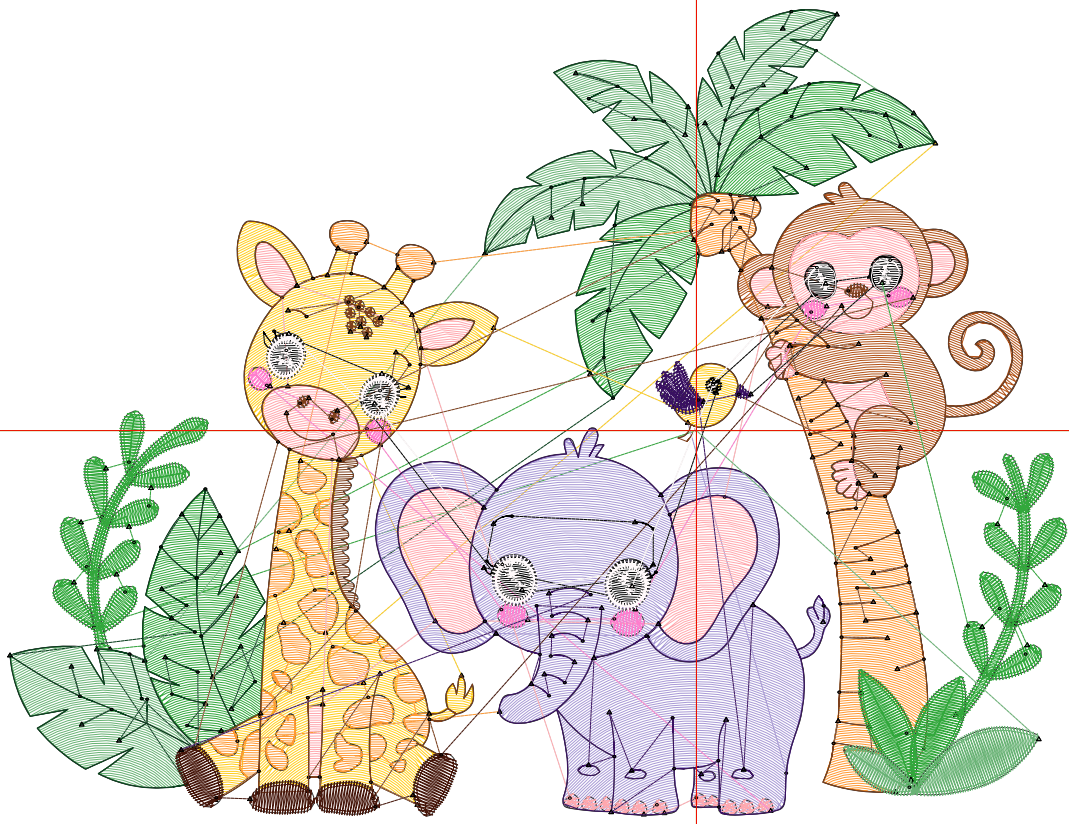
Wilcom EmbroideryStudio - Designing



Design: **5**

Title:

Stitches: 23,154
Height: 4.20 in
Width: 5.51 in
Colors: 14
Colorway: Colorway 1
Zoom: 1:1



1

1

2

2

Production Worksheet

Wilcom EmbroideryStudio - Designing



Design: **5**

Title:

Stitches: 23,154
 Height: 4.20 in
 Width: 5.51 in
 Colors: 14
 Colorway: Colorway 1
 Zoom: 1:1

Machine format: Tajima
 Color changes: 15
 Stops: 16
 Trims: 204
 Appliqués: 0
 Left: 90.8 mm
 Right: 49.0 mm
 Up: 55.7 mm
 Down: 51.0 mm
 EndX: 0.00 in
 EndY: 0.00 in
 Area 23.13 in²
 Max stitch: 7.0 mm
 Min stitch: 0.0 mm
 Max jump: 7.0 mm
 Total thread: 310.21ft
 Total bobbin: 90.69ft

Stop Sequence:

#	N#	Color	St.	Code	Name	Chart
1.	4		2,762		R50 G168 B60	
2.	3		1,712		R105 G179 B117	
3.	1		890		R8 G64 B29	
4.	5		2,911		R255 G206 B30	
5.	7		3,227		R169 G154 B214	
6.	12		2,533	12	Orange	Default
7.	8		1,234		R179 G83 B24	
8.	10		2,076		R255 G168 B174	
9.	11		272		R255 G125 B205	
10.	9		1,793		R125 G64 B29	
11.	2		313		R71 G23 B11	
12.	13		809		R57 G16 B97	
13.	14		551		R0 G0 B0	
14.	6		794		R255 G249 B250	
15.	4		1,039		R50 G168 B60	
16.	3		236		R105 G179 B117	

Production Worksheet

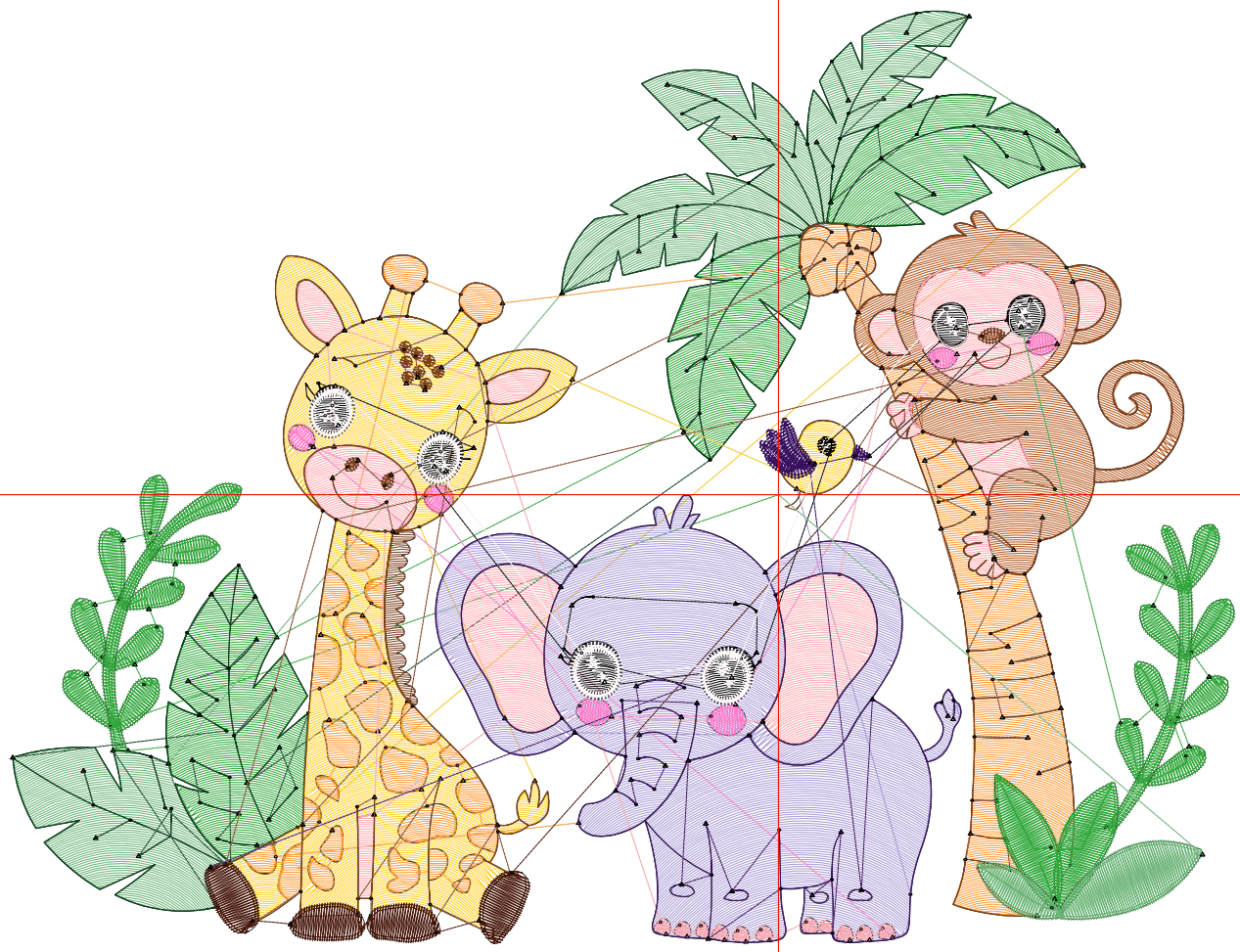
Wilcom EmbroideryStudio - Designing



Design: **6**

Title:

Stitches: 28,865
Height: 4.96 in
Width: 6.51 in
Colors: 14
Colorway: Colorway 1
Zoom: 1:1



Production Worksheet

Wilcom EmbroideryStudio - Designing



Design: **6**

Title:

Stitches: 28,865
 Height: 4.96 in
 Width: 6.51 in
 Colors: 14
 Colorway: Colorway 1
 Zoom: 1:1

Machine format: Tajima
 Color changes: 15
 Stops: 16
 Trims: 220
 Appliqués: 0
 Left: 103.5 mm
 Right: 61.7 mm
 Up: 65.3 mm
 Down: 60.7 mm
 EndX: 0.00 in
 EndY: 0.00 in
 Area 32.29 in²
 Max stitch: 8.1 mm
 Min stitch: 0.0 mm
 Max jump: 7.0 mm
 Total thread: 400.12ft
 Total bobbin: 121.76ft

Stop Sequence:

#	N#	Color	St.	Code	Name	Chart
1.	4		3,492		R50 G168 B60	
2.	3		2,241		R105 G179 B117	
3.	1		963		R8 G64 B29	
4.	5		3,736		R255 G206 B30	
5.	7		4,261		R169 G154 B214	
6.	12		3,275	12	Orange	Default
7.	8		1,595		R179 G83 B24	
8.	10		2,670		R255 G168 B174	
9.	11		316		R255 G125 B205	
10.	9		1,950		R125 G64 B29	
11.	2		371		R71 G23 B11	
12.	13		890		R57 G16 B97	
13.	14		647		R0 G0 B0	
14.	6		959		R255 G249 B250	
15.	4		1,217		R50 G168 B60	
16.	3		280		R105 G179 B117	

Production Worksheet

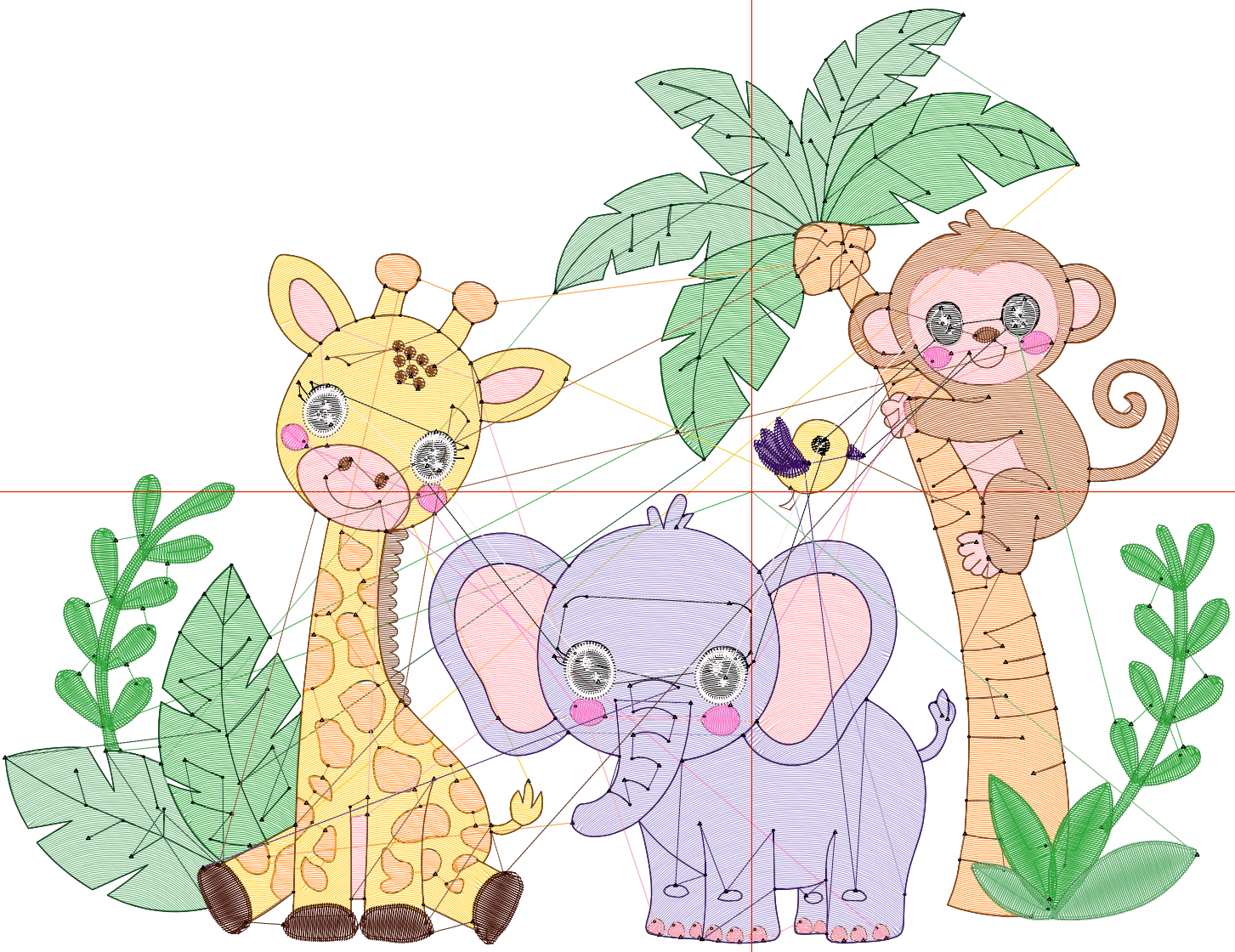
Wilcom EmbroideryStudio - Designing



Design: 7

Title:

Stitches: 35,192
Height: 5.73 in
Width: 7.51 in
Colors: 14
Colorway: Colorway 1
Zoom: 1:1



Production Worksheet

Wilcom EmbroideryStudio - Designing



Design: **7**

Title:

Stitches: 35,192
 Height: 5.73 in
 Width: 7.51 in
 Colors: 14
 Colorway: Colorway 1
 Zoom: 1:1

Machine format: Tajima
 Color changes: 15
 Stops: 16
 Trims: 237
 Appliqués: 0
 Left: 116.2 mm
 Right: 74.4 mm
 Up: 75.0 mm
 Down: 70.4 mm
 EndX: 0.00 in
 EndY: 0.00 in
 Area 42.98 in²
 Max stitch: 9.3 mm
 Min stitch: 0.0 mm
 Max jump: 7.0 mm
 Total thread: 502.29ft
 Total bobbin: 157.70ft

Stop Sequence:

#	N#	Color	St.	Code	Name	Chart
1.	4		4,335		R50 G168 B60	
2.	3		2,830		R105 G179 B117	
3.	1		1,037		R8 G64 B29	
4.	5		4,620		R255 G206 B30	
5.	7		5,524		R169 G154 B214	
6.	12		4,088	12	Orange	Default
7.	8		2,006		R179 G83 B24	
8.	10		3,272		R255 G168 B174	
9.	11		360		R255 G125 B205	
10.	9		2,156		R125 G64 B29	
11.	2		427		R71 G23 B11	
12.	13		968		R57 G16 B97	
13.	14		782		R0 G0 B0	
14.	6		1,056		R255 G249 B250	
15.	4		1,404		R50 G168 B60	
16.	3		325		R105 G179 B117	