

Production Worksheet

Wilcom EmbroideryStudio - Designing



Design: **3**

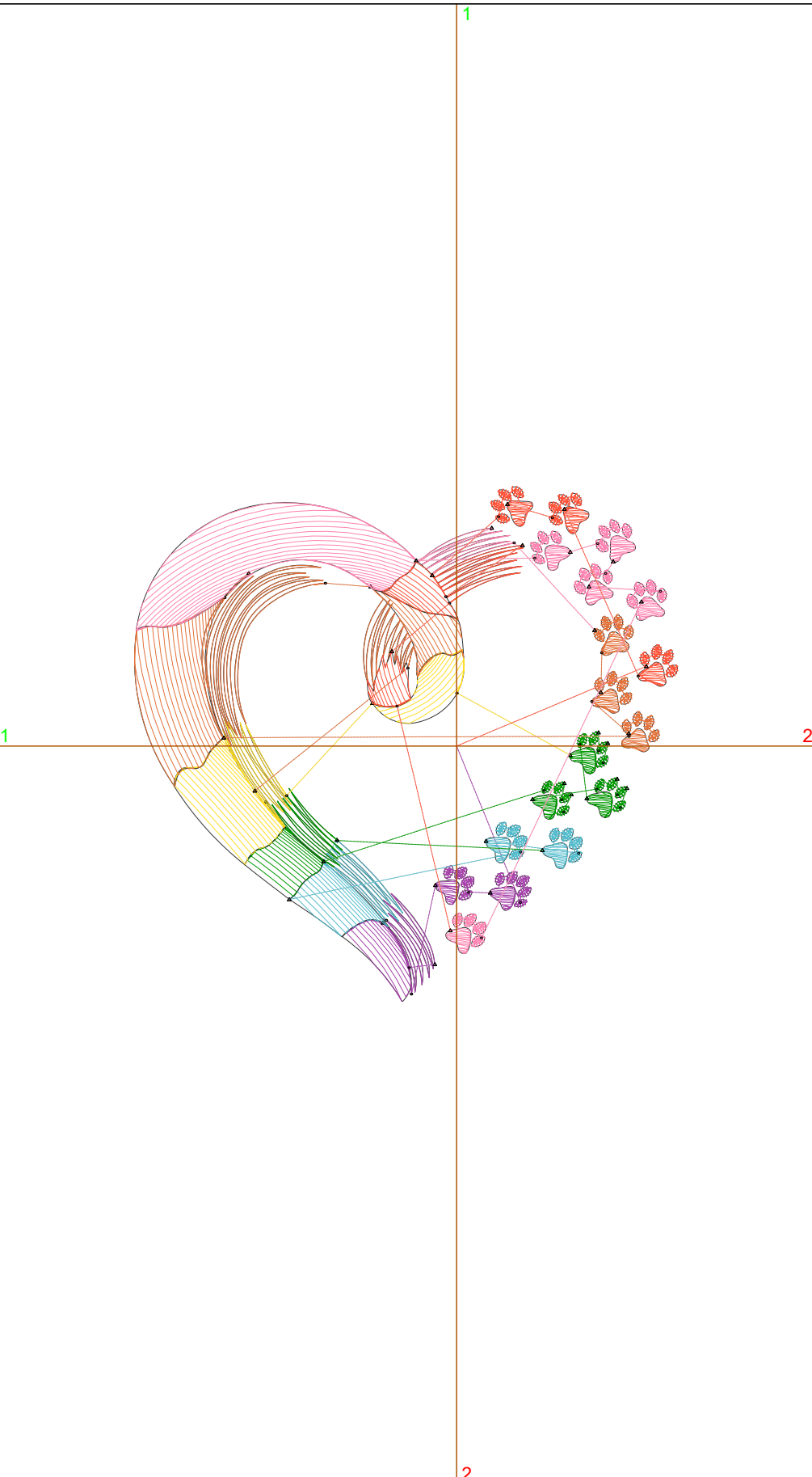
Title:

Stitches: 4,794
 Height: 3.32 in
 Width: 3.50 in
 Colors: 7
 Colorway: Colorway 1
 Zoom: 1:1

Machine format: Tajima
 Color changes: 6
 Stops: 7
 Trims: 40
 Appliqués: 0
 Left: 52.7 mm
 Right: 36.2 mm
 Up: 42.5 mm
 Down: 41.8 mm
 EndX: 0.00 in
 EndY: 0.00 in
 Area: 11.62 in²
 Max stitch: 6.9 mm
 Min stitch: 0.0 mm
 Max jump: 6.9 mm
 Total thread: 64.17ft
 Total bobbin: 18.03ft

Stop Sequence:

#	N#	Color	St.	Code	Name	Chart
1.	6		485		R166 G67 B171	
2.	4		480		R84 G188 B204	
3.	1		647	1	Dark Green	Default
4.	8		299		R255 G222 B37	
5.	3		1,029		R227 G114 B58	
6.	2		1,165		R255 G132 B177	
7.	7		687		R255 G84 B58	



Production Worksheet

Wilcom EmbroideryStudio - Designing



Design: **4**

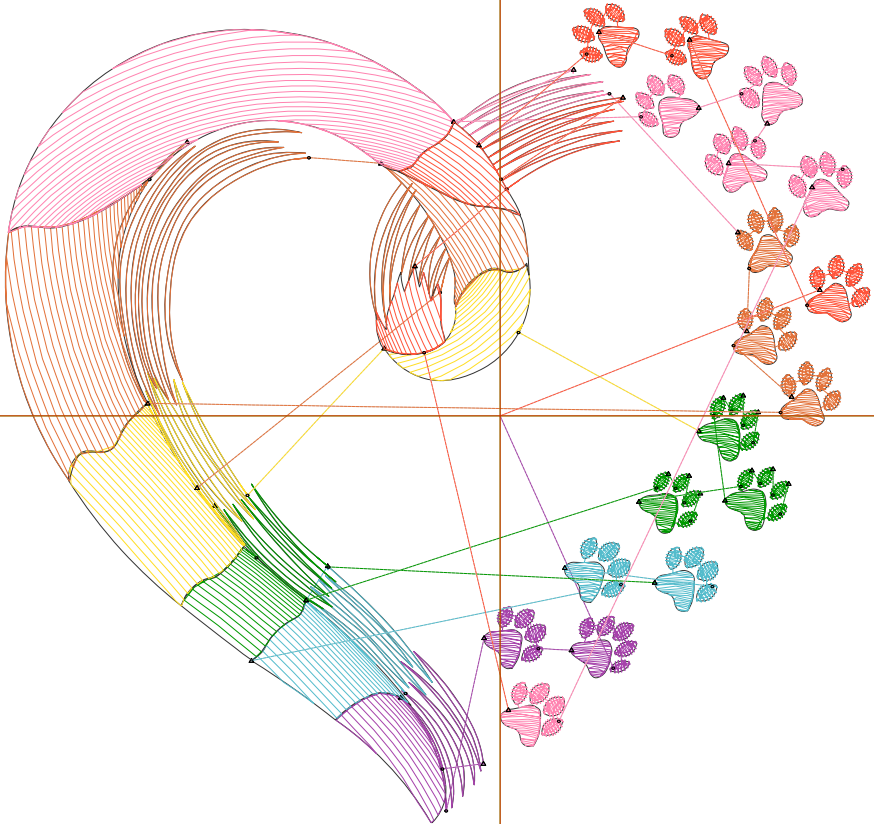
Title:

Stitches: 6,282
 Height: 4.27 in
 Width: 4.50 in
 Colors: 7
 Colorway: Colorway 1
 Zoom: 1:1

Machine format: Tajima
 Color changes: 6
 Stops: 7
 Trims: 43
 Appliqués: 0
 Left: 65.4 mm
 Right: 49.0 mm
 Up: 54.6 mm
 Down: 53.8 mm
 EndX: 0.00 in
 EndY: 0.00 in
 Area: 19.21 in²
 Max stitch: 7.0 mm
 Min stitch: 0.0 mm
 Max jump: 7.0 mm
 Total thread: 88.64ft
 Total bobbin: 26.74ft

Stop Sequence:

#	N#	Color	St.	Code	Name	Chart
1.	6		623		R166 G67 B171	
2.	4		619		R84 G188 B204	
3.	1		832	1	Dark Green	Default
4.	8		407		R255 G222 B37	
5.	3		1,341		R227 G114 B58	
6.	2		1,572		R255 G132 B177	
7.	7		886		R255 G84 B58	



Production Worksheet

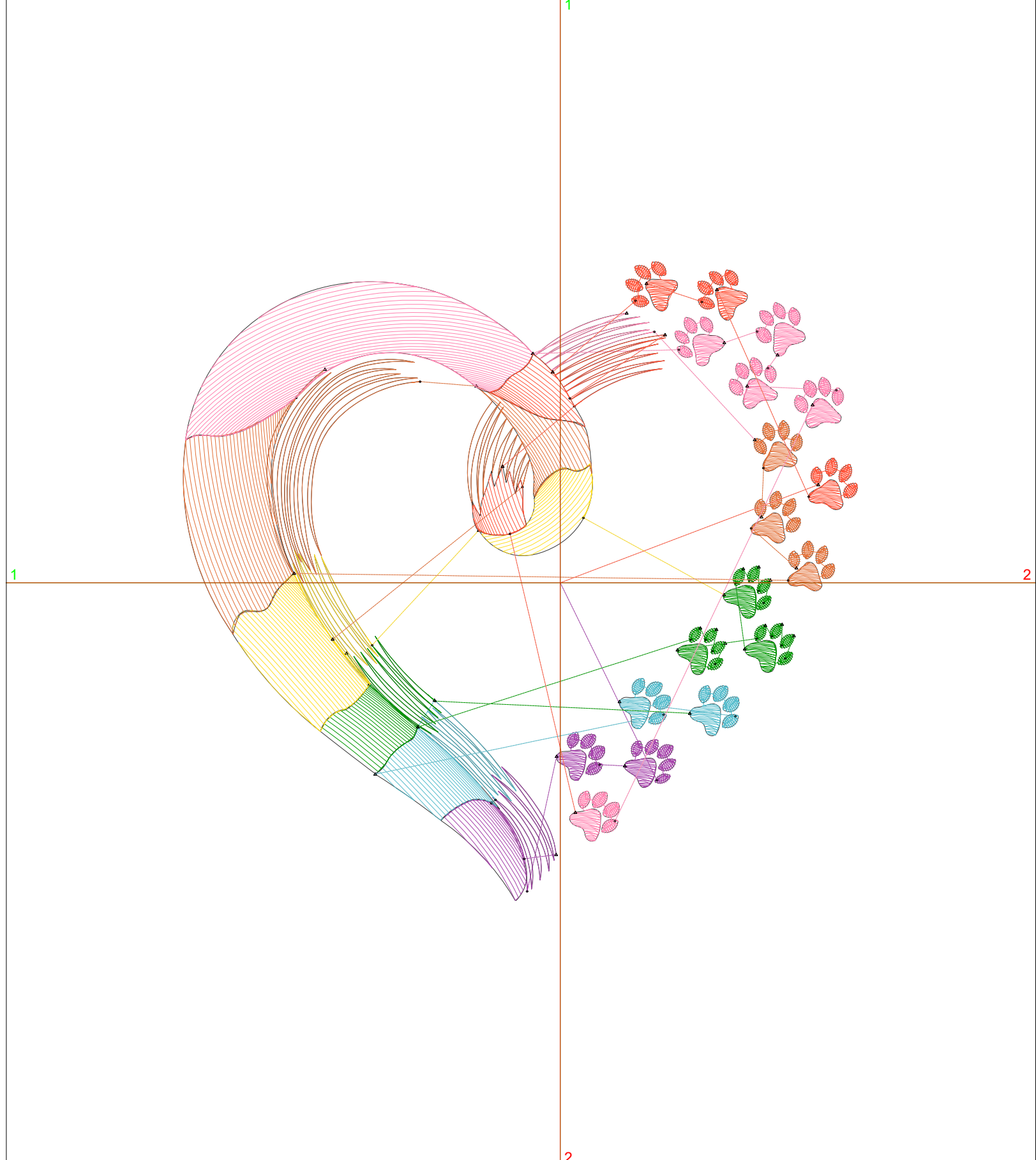
Wilcom EmbroideryStudio - Designing



Design: **5**

Title:

Stitches: 7,829
Height: 5.21 in
Width: 5.50 in
Colors: 7
Colorway: Colorway 1
Zoom: 1:1



Production Worksheet

Wilcom EmbroideryStudio - Designing



Design: **5**

Title:

Stitches: 7,829
 Height: 5.21 in
 Width: 5.50 in
 Colors: 7
 Colorway: Colorway 1
 Zoom: 1:1

Machine format: Tajima
 Color changes: 6
 Stops: 7
 Trims: 43
 Appliqués: 0
 Left: 78.1 mm
 Right: 61.7 mm
 Up: 66.6 mm
 Down: 65.8 mm
 EndX: 0.00 in
 EndY: 0.00 in
 Area 28.68 in²
 Max stitch: 7.0 mm
 Min stitch: 0.0 mm
 Max jump: 7.0 mm
 Total thread: 116.56ft
 Total bobbin: 37.27ft

Stop Sequence:

#	N#	Color	St.	Code	Name	Chart
1.	6		743		R166 G67 B171	
2.	4		762		R84 G188 B204	
3.	1		1,001	1	Dark Green	Default
4.	8		576		R255 G222 B37	
5.	3		1,674		R227 G114 B58	
6.	2		1,999		R255 G132 B177	
7.	7		1,072		R255 G84 B58	

Production Worksheet

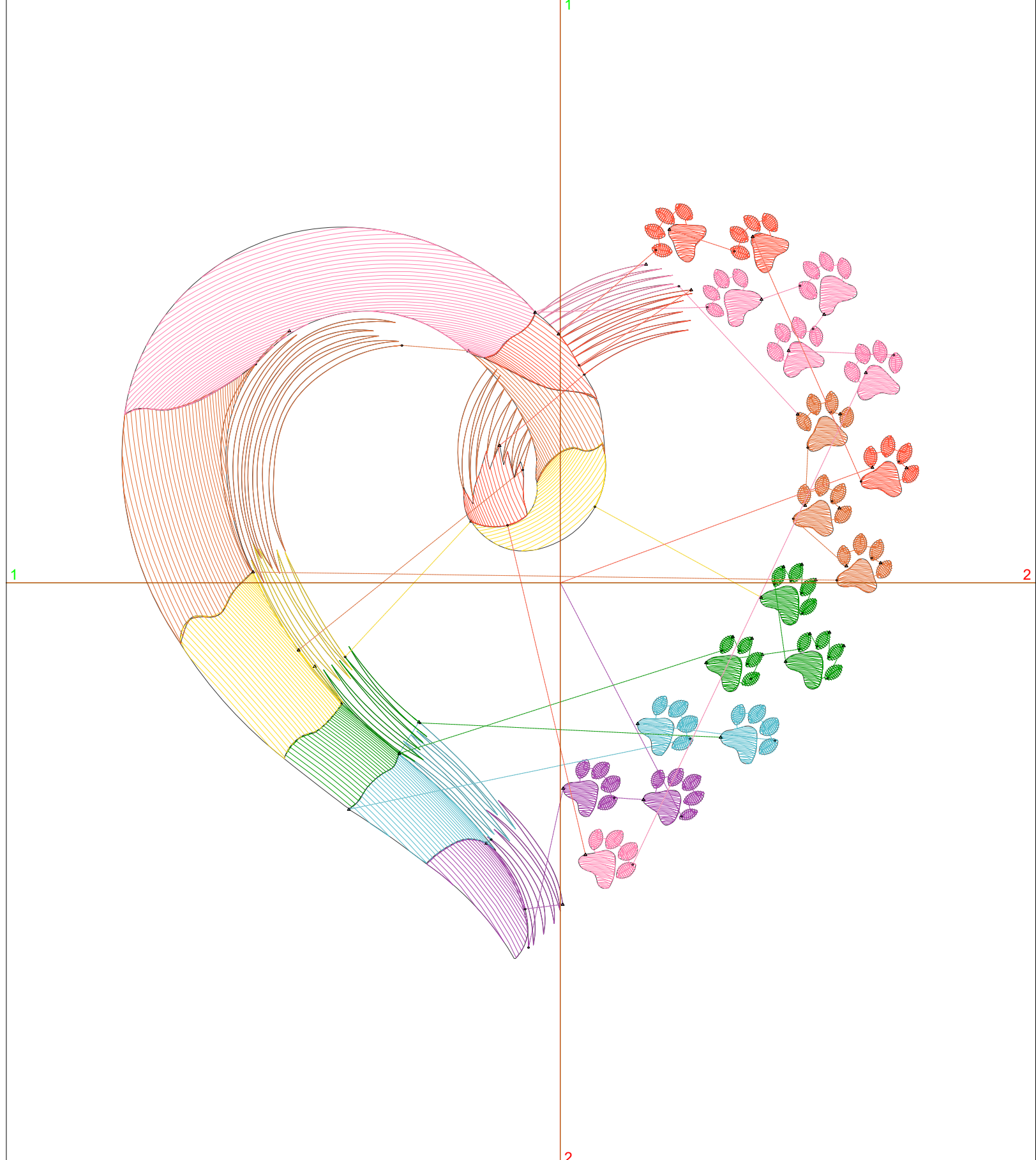
Wilcom EmbroideryStudio - Designing



Design: **6**

Title:

Stitches: 9,533
Height: 6.15 in
Width: 6.50 in
Colors: 7
Colorway: Colorway 1
Zoom: 1:1



Production Worksheet

Wilcom EmbroideryStudio - Designing



Design: **6**

Title:

Stitches: 9,533
 Height: 6.15 in
 Width: 6.50 in
 Colors: 7
 Colorway: Colorway 1
 Zoom: 1:1

Machine format: Tajima
 Color changes: 6
 Stops: 7
 Trims: 47
 Appliqués: 0
 Left: 90.8 mm
 Right: 74.4 mm
 Up: 78.6 mm
 Down: 77.7 mm
 EndX: 0.00 in
 EndY: 0.00 in
 Area 40.01 in²
 Max stitch: 6.9 mm
 Min stitch: 0.0 mm
 Max jump: 6.9 mm
 Total thread: 147.43ft
 Total bobbin: 48.94ft

Stop Sequence:

#	N#	Color	St.	Code	Name	Chart
1.	6		891		R166 G67 B171	
2.	4		922		R84 G188 B204	
3.	1		1,169	1	Dark Green	Default
4.	8		710		R255 G222 B37	
5.	3		2,082		R227 G114 B58	
6.	2		2,454		R255 G132 B177	
7.	7		1,303		R255 G84 B58	

Production Worksheet

Wilcom EmbroideryStudio - Designing



Design: **7**

Title:

Stitches: 11,557
Height: 7.11 in
Width: 7.50 in
Colors: 7
Colorway: Colorway 1
Zoom: 1:1



Production Worksheet

Wilcom EmbroideryStudio - Designing



Design: **7**

Title:

Stitches: 11,557
 Height: 7.11 in
 Width: 7.50 in
 Colors: 7
 Colorway: Colorway 1
 Zoom: 1:1

Machine format: Tajima
 Color changes: 6
 Stops: 7
 Trims: 53
 Appliqués: 0
 Left: 103.5 mm
 Right: 87.1 mm
 Up: 90.7 mm
 Down: 89.9 mm
 EndX: 0.00 in
 EndY: 0.00 in
 Area 53.32 in²
 Max stitch: 7.0 mm
 Min stitch: 0.0 mm
 Max jump: 7.0 mm
 Total thread: 184.53ft
 Total bobbin: 63.05ft

Stop Sequence:

#	N#	Color	St.	Code	Name	Chart
1.	6		1,049		R166 G67 B171	
2.	4		1,090		R84 G188 B204	
3.	1		1,389	1	Dark Green	Default
4.	8		868		R255 G222 B37	
5.	3		2,531		R227 G114 B58	
6.	2		3,055		R255 G132 B177	
7.	7		1,573		R255 G84 B58	