

Production Worksheet

Wilcom EmbroideryStudio - Designing



Design: **3**

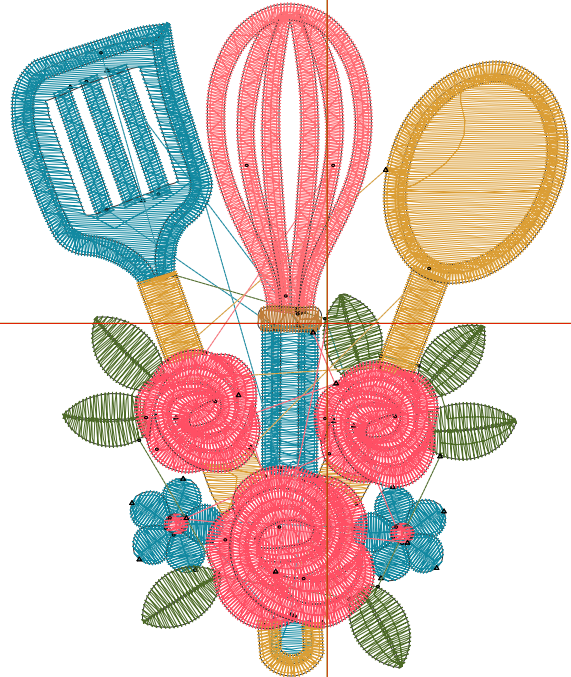
Title:

Stitches: 11,660
 Height: 3.51 in
 Width: 2.91 in
 Colors: 6
 Colorway: Colorway 1
 Zoom: 1:1

Machine format: Tajima
 Color changes: 5
 Stops: 6
 Trims: 45
 Appliqués: 0
 Left: 41.9 mm
 Right: 31.9 mm
 Up: 42.4 mm
 Down: 46.8 mm
 EndX: 0.00 in
 EndY: 0.00 in
 Area 10.21 in²
 Max stitch: 6.8 mm
 Min stitch: 0.0 mm
 Max jump: 6.8 mm
 Total thread: 194.76ft
 Total bobbin: 68.91ft

Stop Sequence:

#	N#	Color	St.	Code	Name	Chart
1.	2		2,952	R18 G137 B161		
2.	3		1,454	R77 G107 B38		
3.	1		1,696	R219 G158 B53		
4.	6		1,773	R255 G109 B116		
5.	4		78	R191 G125 B58		
6.	5		3,705	R255 G79 B100		



Production Worksheet

Wilcom EmbroideryStudio - Designing



Design: **4**

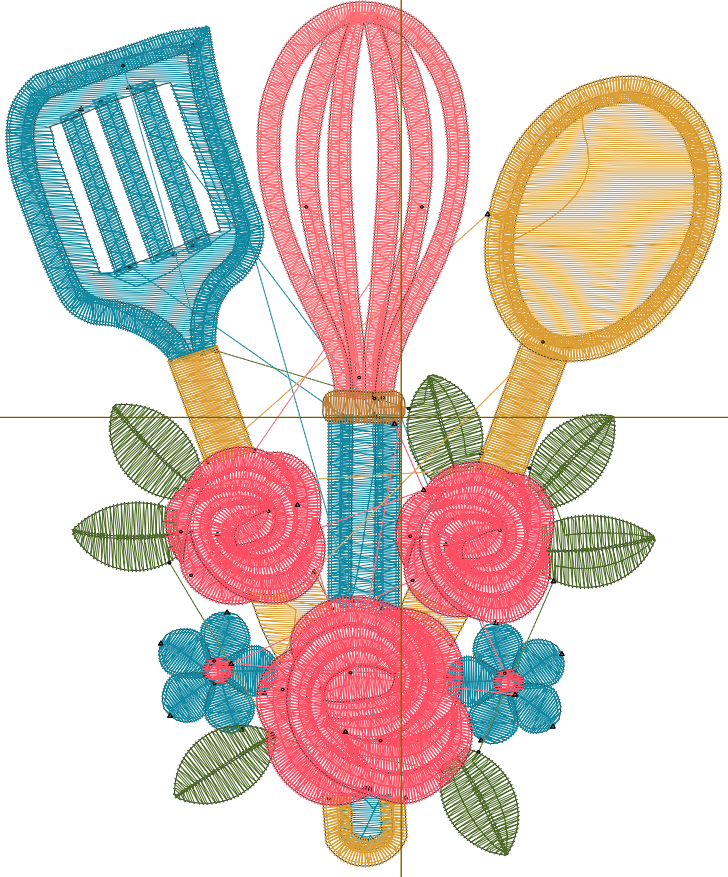
Title:

Stitches: 15,515
 Height: 4.51 in
 Width: 3.73 in
 Colors: 6
 Colorway: Colorway 1
 Zoom: 1:1

Machine format: Tajima
 Color changes: 5
 Stops: 6
 Trims: 45
 Appliqués: 0
 Left: 52.3 mm
 Right: 42.4 mm
 Up: 55.1 mm
 Down: 59.5 mm
 EndX: 0.00 in
 EndY: 0.00 in
 Area 16.84 in²
 Max stitch: 6.9 mm
 Min stitch: 0.0 mm
 Max jump: 6.9 mm
 Total thread: 291.11ft
 Total bobbin: 111.02ft

Stop Sequence:

#	N#	Color	St.	Code	Name	Chart
1.	2		3,990	R18	G137 B161	
2.	3		1,981	R77	G107 B38	
3.	1		2,388	R219	G158 B53	
4.	6		2,336	R255	G109 B116	
5.	4		102	R191	G125 B58	
6.	5		4,716	R255	G79 B100	



Production Worksheet

Wilcom EmbroideryStudio - Designing



Design: **5**

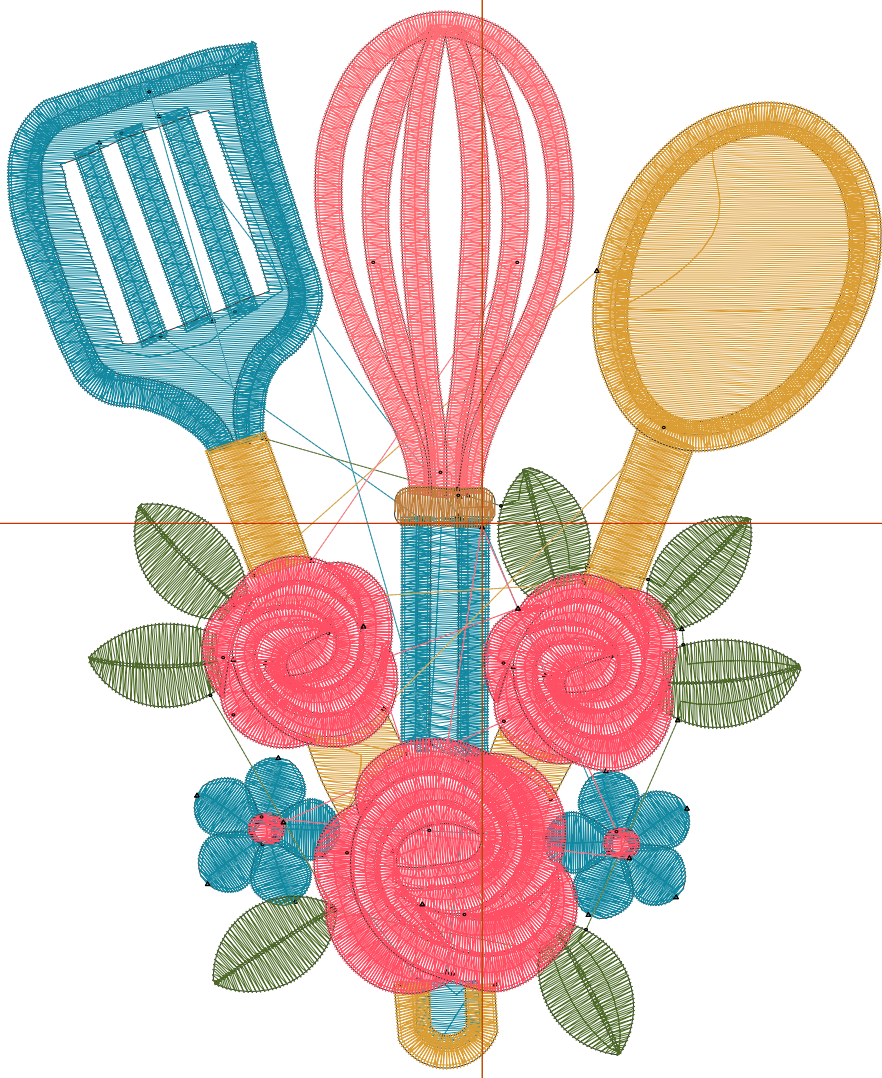
Title:

Stitches: 19,635
 Height: 5.51 in
 Width: 4.56 in
 Colors: 6
 Colorway: Colorway 1
 Zoom: 1:1

Machine format: Tajima
 Color changes: 5
 Stops: 6
 Trims: 46
 Appliqués: 0
 Left: 62.8 mm
 Right: 52.9 mm
 Up: 67.8 mm
 Down: 72.2 mm
 EndX: 0.00 in
 EndY: 0.00 in
 Area: 25.13 in²
 Max stitch: 8.3 mm
 Min stitch: 0.0 mm
 Max jump: 7.0 mm
 Total thread: 407.42ft
 Total bobbin: 163.92ft

Stop Sequence:

#	N#	Color	St.	Code	Name	Chart
1.	2		5,067	R18	G137 B161	
2.	3		2,564	R77	G107 B38	
3.	1		3,154	R219	G158 B53	
4.	6		2,925	R255	G109 B116	
5.	4		128	R191	G125 B58	
6.	5		5,795	R255	G79 B100	



Production Worksheet

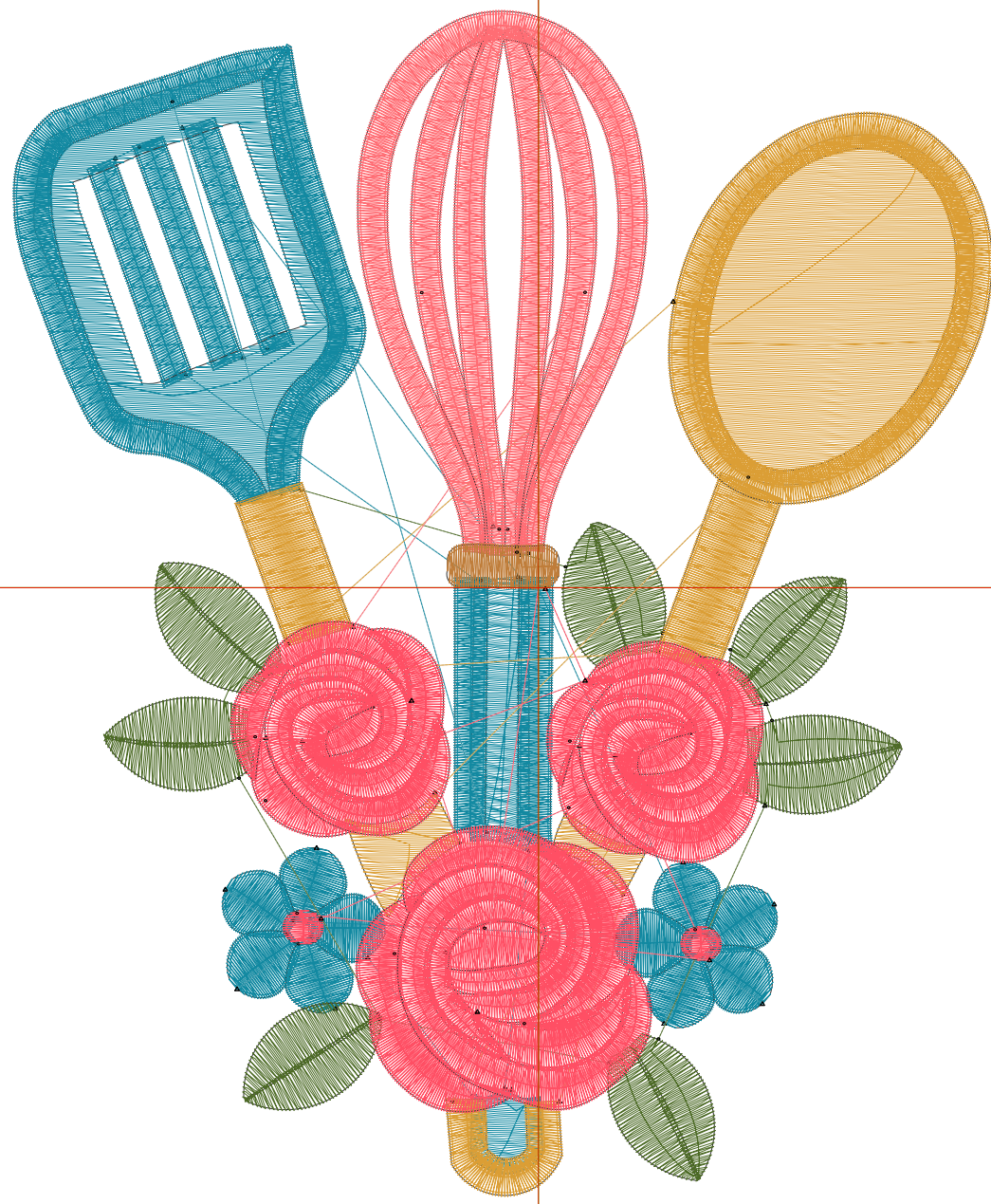
Wilcom EmbroideryStudio - Designing



Design: **6**

Title:

Stitches: 24,249
Height: 6.51 in
Width: 5.38 in
Colors: 6
Colorway: Colorway 1
Zoom: 1:1



Production Worksheet

Wilcom EmbroideryStudio - Designing



Design: **6**

Title:

Stitches: 24,249
 Height: 6.51 in
 Width: 5.38 in
 Colors: 6
 Colorway: Colorway 1
 Zoom: 1:1

Machine format: Tajima
 Color changes: 5
 Stops: 6
 Trims: 47
 Appliqués: 0
 Left: 73.3 mm
 Right: 63.4 mm
 Up: 80.5 mm
 Down: 84.9 mm
 EndX: 0.00 in
 EndY: 0.00 in
 Area 35.07 in²
 Max stitch: 9.7 mm
 Min stitch: 0.1 mm
 Max jump: 7.0 mm
 Total thread: 546.96ft
 Total bobbin: 228.67ft

Stop Sequence:

#	N#	Color	St.	Code	Name	Chart
1.	2		6,274		R18 G137 B161	
2.	3		3,224		R77 G107 B38	
3.	1		4,051		R219 G158 B53	
4.	6		3,533		R255 G109 B116	
5.	4		163		R191 G125 B58	
6.	5		7,002		R255 G79 B100	

Production Worksheet

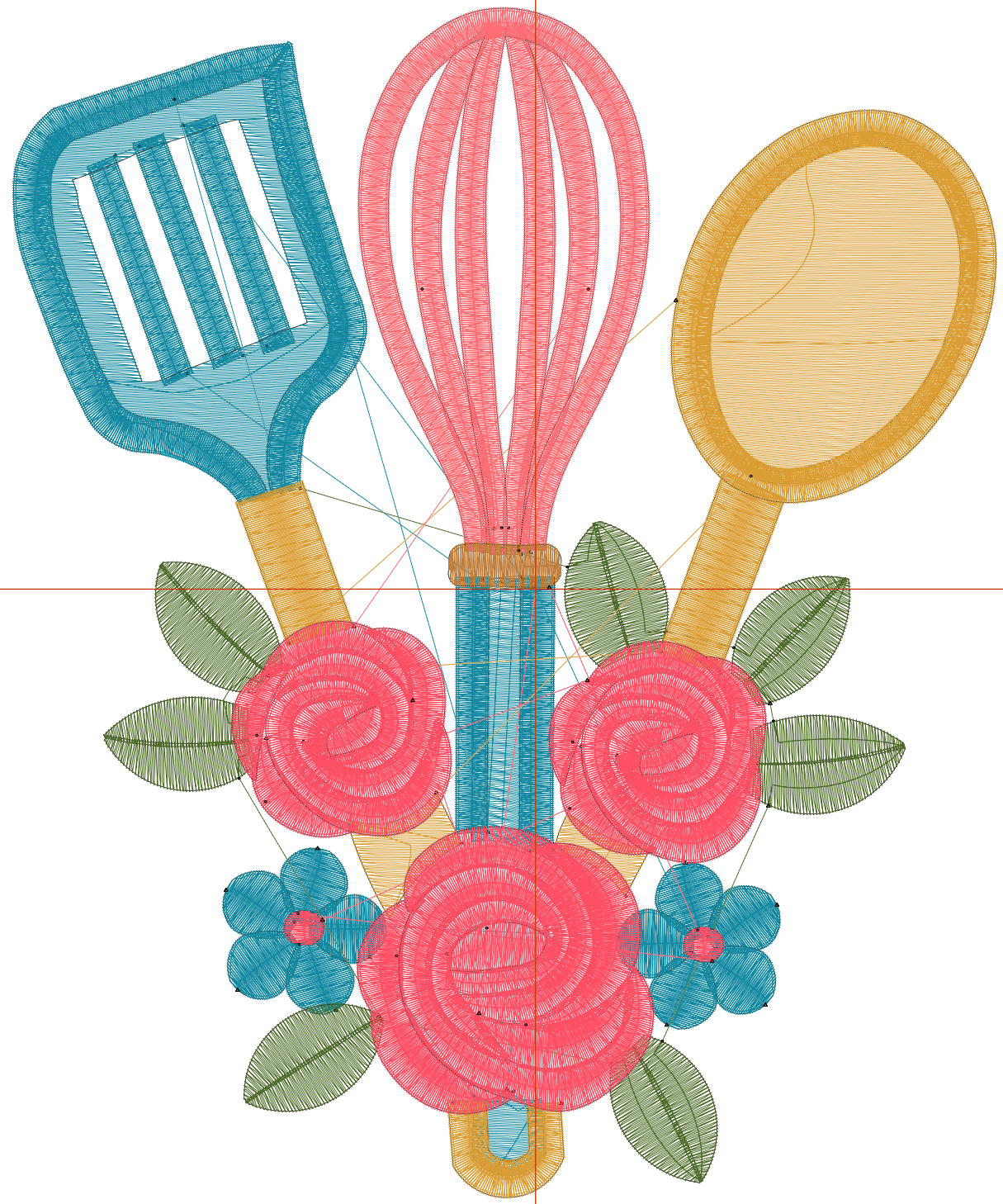
Wilcom EmbroideryStudio - Designing



Design: **7**

Title:

Stitches: 29,614
Height: 7.51 in
Width: 6.21 in
Colors: 6
Colorway: Colorway 1
Zoom: 1:1



Production Worksheet

Wilcom EmbroideryStudio - Designing



Design: **7**

Title:

Stitches: 29,614
 Height: 7.51 in
 Width: 6.21 in
 Colors: 6
 Colorway: Colorway 1
 Zoom: 1:1

Machine format: Tajima
 Color changes: 5
 Stops: 6
 Trims: 47
 Appliqués: 0
 Left: 83.8 mm
 Right: 73.9 mm
 Up: 93.2 mm
 Down: 97.6 mm
 EndX: 0.00 in
 EndY: 0.00 in
 Area 46.66 in²
 Max stitch: 11.2 mm
 Min stitch: 0.0 mm
 Max jump: 7.0 mm
 Total thread: 711.97ft
 Total bobbin: 305.59ft

Stop Sequence:

#	N#	Color	St.	Code	Name	Chart
1.	2		7,769	R18	G137 B161	
2.	3		3,966	R77	G107 B38	
3.	1		5,157	R219	G158 B53	
4.	6		4,190	R255	G109 B116	
5.	4		191	R191	G125 B58	
6.	5		8,339	R255	G79 B100	