

# Production Worksheet

Wilcom EmbroideryStudio - Designing



Design: **3**

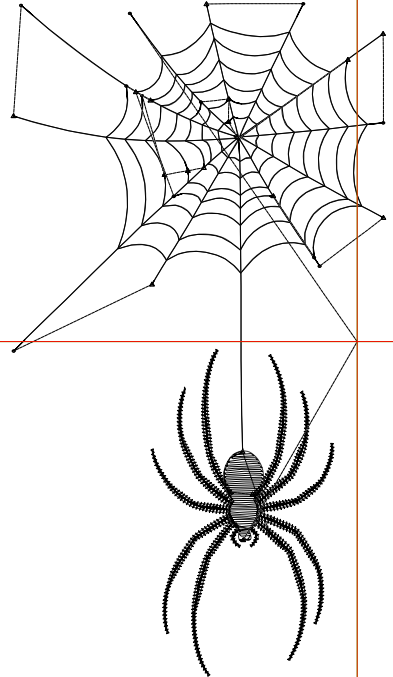
Title:

Stitches: 2,068  
 Height: 3.50 in  
 Width: 1.93 in  
 Colors: 1  
 Colorway: Colorway 1  
 Zoom: 1:1

Machine format: Tajima  
 Color changes: 0  
 Stops: 1  
 Trims: 19  
 Appliqués: 0  
 Left: 45.5 mm  
 Right: 3.5 mm  
 Up: 44.7 mm  
 Down: 44.3 mm  
 EndX: 0.00 in  
 EndY: 0.00 in  
 Area: 6.75 in<sup>2</sup>  
 Max stitch: 6.2 mm  
 Min stitch: 0.0 mm  
 Max jump: 6.6 mm  
 Total thread: 24.72ft  
 Total bobbin: 6.41ft

Stop Sequence:

#	N#	Color	St.	Code	Name	Chart
1.	8	█	2,066	8	Black	Default



# Production Worksheet

Wilcom EmbroideryStudio - Designing



Design: **4**

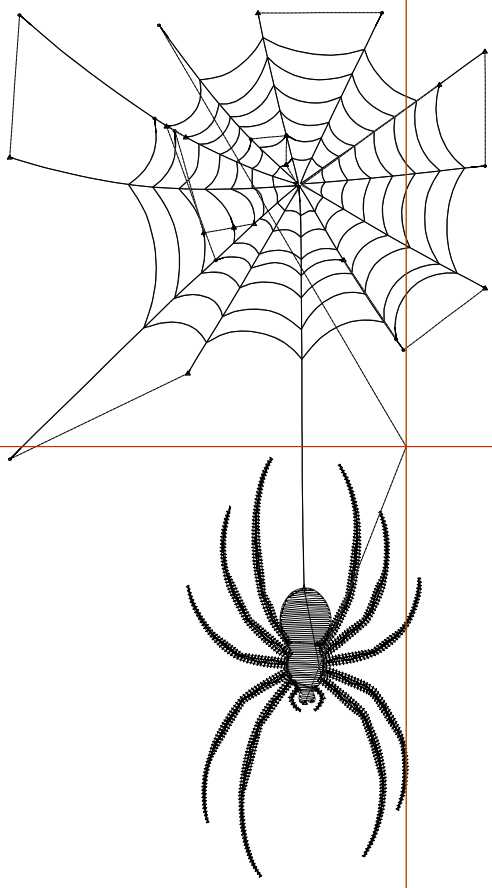
Title:

Stitches: 2,555  
 Height: 4.50 in  
 Width: 2.48 in  
 Colors: 1  
 Colorway: Colorway 1  
 Zoom: 1:1

Machine format: Tajima  
 Color changes: 0  
 Stops: 1  
 Trims: 20  
 Appliqués: 0  
 Left: 52.5 mm  
 Right: 10.5 mm  
 Up: 57.4 mm  
 Down: 57.0 mm  
 EndX: 0.00 in  
 EndY: 0.00 in  
 Area: 11.16 in<sup>2</sup>  
 Max stitch: 7.0 mm  
 Min stitch: 0.1 mm  
 Max jump: 7.0 mm  
 Total thread: 31.97ft  
 Total bobbin: 8.82ft

Stop Sequence:

#	N#	Color	St.	Code	Name	Chart
1.	8	█	2,553	8	Black	Default



# Production Worksheet

Wilcom EmbroideryStudio - Designing



Design: **5**

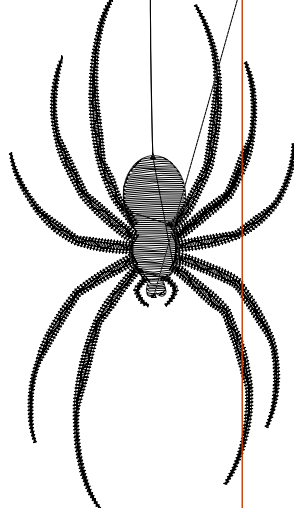
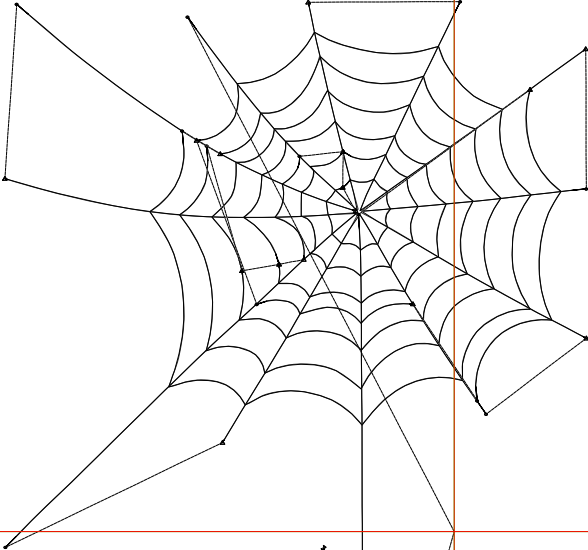
Title:

Stitches: 3,082  
 Height: 5.50 in  
 Width: 3.03 in  
 Colors: 1  
 Colorway: Colorway 1  
 Zoom: 1:1

Machine format: Tajima  
 Color changes: 0  
 Stops: 1  
 Trims: 20  
 Appliqués: 0  
 Left: 59.4 mm  
 Right: 17.5 mm  
 Up: 70.1 mm  
 Down: 69.7 mm  
 EndX: 0.00 in  
 EndY: 0.00 in  
 Area: 16.67 in<sup>2</sup>  
 Max stitch: 6.8 mm  
 Min stitch: 0.0 mm  
 Max jump: 6.9 mm  
 Total thread: 40.30ft  
 Total bobbin: 11.70ft

Stop Sequence:

#	N#	Color	St.	Code	Name	Chart
1.	8	█	3,080	8	Black	Default



# Production Worksheet

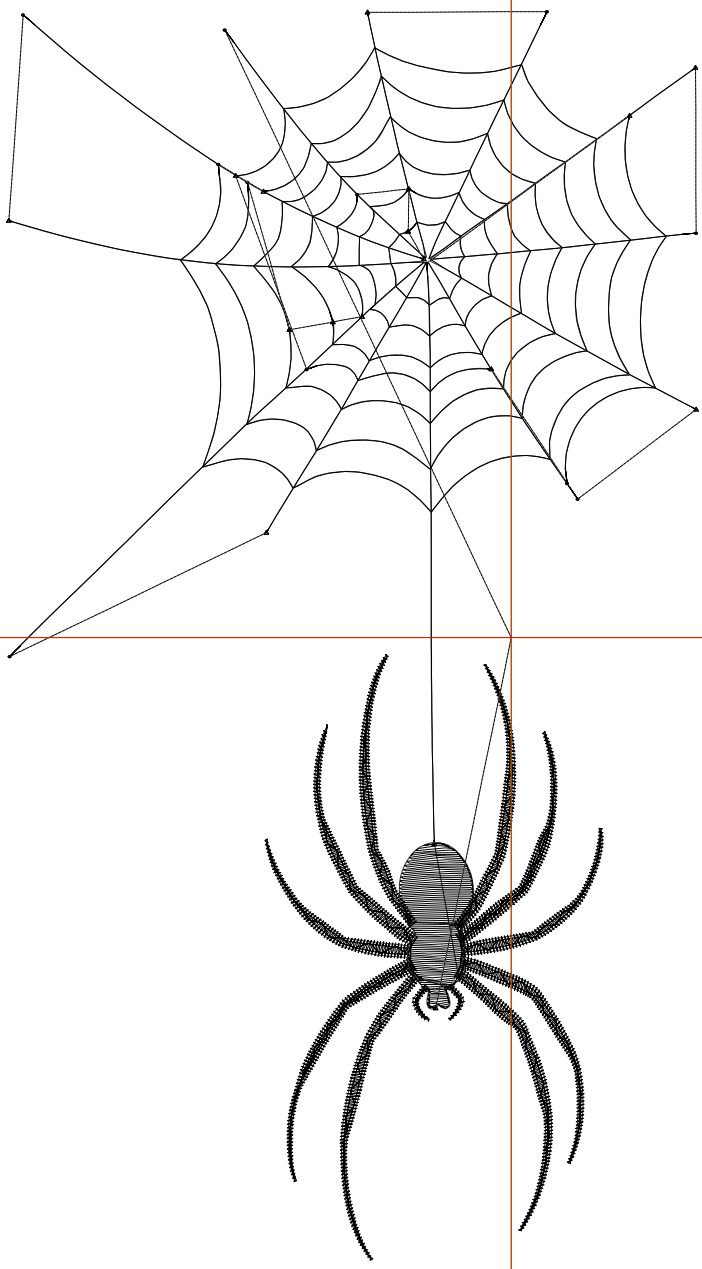
Wilcom EmbroideryStudio - Designing



Design: **6**

Title:

Stitches: 3,634  
 Height: 6.50 in  
 Width: 3.58 in  
 Colors: 1  
 Colorway: Colorway 1  
 Zoom: 1:1



Machine format: Tajima  
 Color changes: 0  
 Stops: 1  
 Trims: 20  
 Appliqués: 0  
 Left: 66.4 mm  
 Right: 24.5 mm  
 Up: 82.8 mm  
 Down: 82.4 mm  
 EndX: 0.00 in  
 EndY: 0.00 in  
 Area: 23.28 in<sup>2</sup>  
 Max stitch: 6.8 mm  
 Min stitch: 0.2 mm  
 Max jump: 6.8 mm  
 Total thread: 49.54ft  
 Total bobbin: 15.03ft

Stop Sequence:

#	N#	Color	St.	Code	Name	Chart
1.	8	█	3,632	8	Black	Default

# Production Worksheet

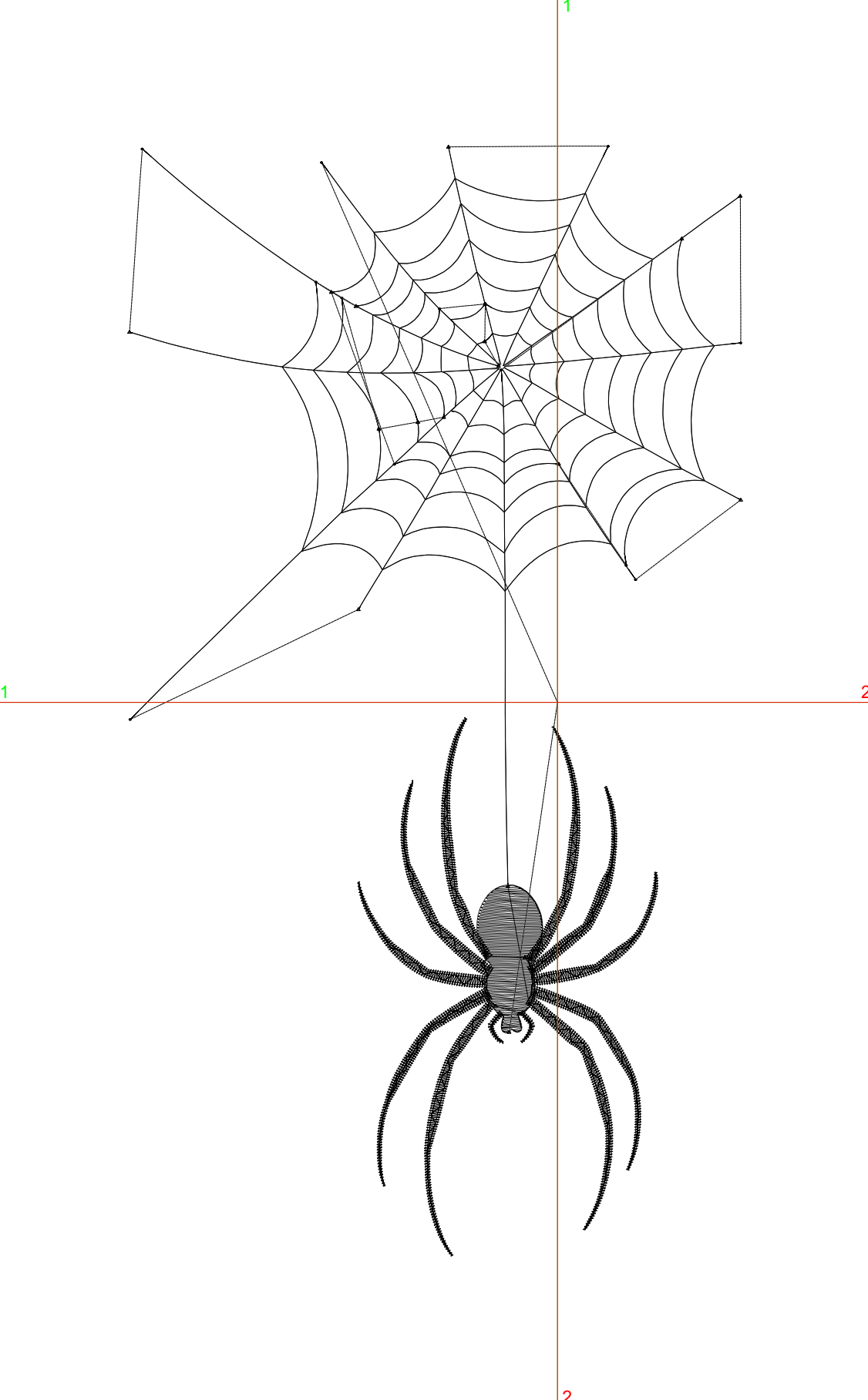
Wilcom EmbroideryStudio - Designing



Design: **7**

Title:

Stitches: 4,166  
 Height: 7.50 in  
 Width: 4.13 in  
 Colors: 1  
 Colorway: Colorway 1  
 Zoom: 1:1



Machine format: Tajima  
 Color changes: 0  
 Stops: 1  
 Trims: 20  
 Appliqués: 0  
 Left: 73.4 mm  
 Right: 31.5 mm  
 Up: 95.5 mm  
 Down: 95.1 mm  
 EndX: 0.00 in  
 EndY: 0.00 in  
 Area: 30.98 in<sup>2</sup>  
 Max stitch: 6.9 mm  
 Min stitch: 0.1 mm  
 Max jump: 6.9 mm  
 Total thread: 58.82ft  
 Total bobbin: 18.47ft

Stop Sequence:  

#	N#	Color	St.	Code	Name	Chart
1.	8	█	4,164	8	Black	Default