

Production Worksheet

Wilcom EmbroideryStudio - Designing



Design: **3**

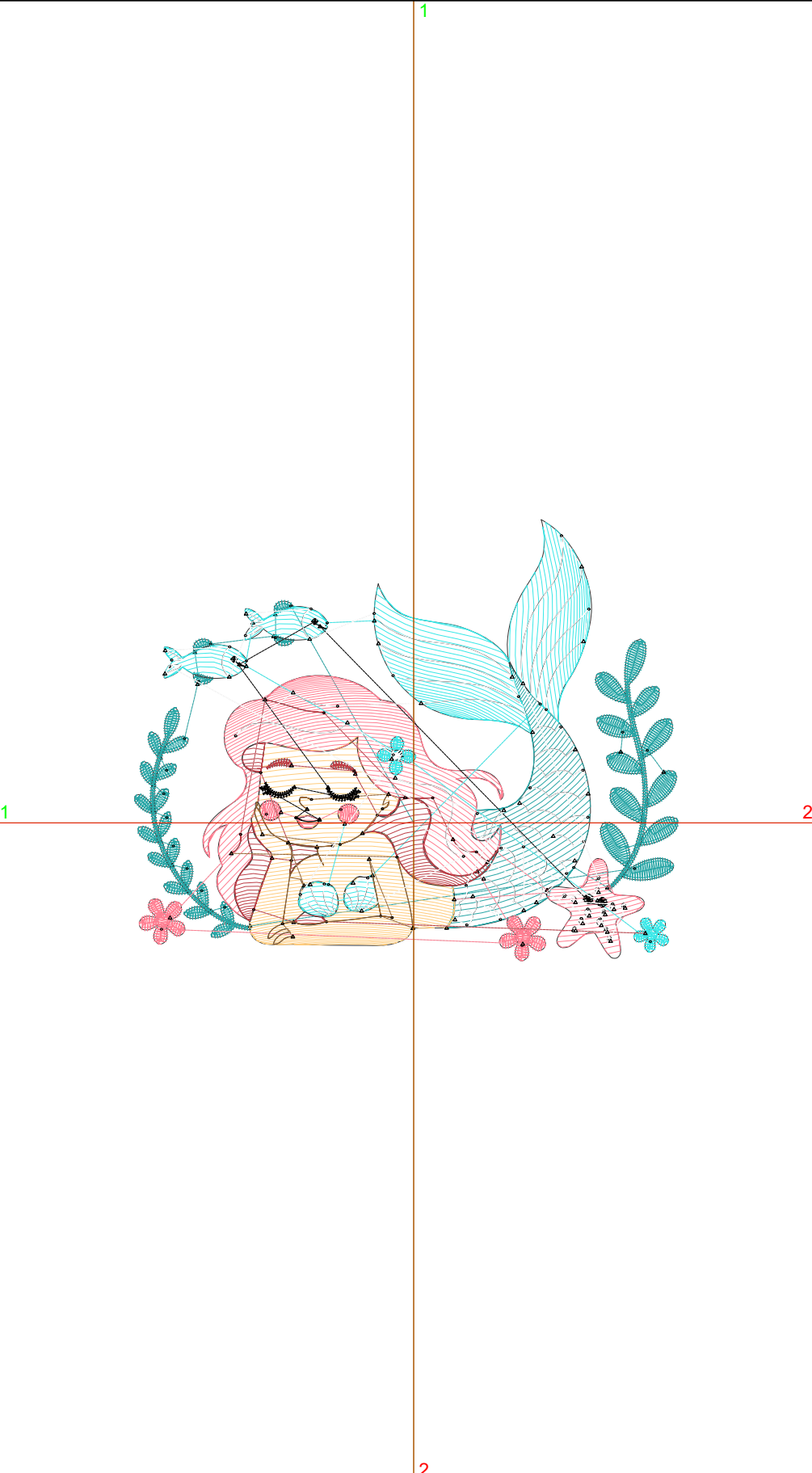
Title:

Stitches: 6,986
 Height: 2.82 in
 Width: 3.50 in
 Colors: 8
 Colorway: Colorway 1
 Zoom: 1:1

Machine format: Tajima
 Color changes: 7
 Stops: 8
 Trims: 97
 Appliqués: 0
 Left: 45.7 mm
 Right: 43.3 mm
 Up: 49.2 mm
 Down: 22.6 mm
 EndX: 0.00 in
 EndY: 0.00 in
 Area 9.90 in²
 Max stitch: 9.9 mm
 Min stitch: 0.0 mm
 Max jump: 7.0 mm
 Total thread: 95.42ft
 Total bobbin: 27.83ft

Stop Sequence:

#	N#	Color	St.	Code	Name	Chart
1.	1		2,345		R41 G166 B166	
2.	16		638	16	Sand	Default
3.	2		1,221		R255 G126 B145	
4.	3		922		R58 G232 B232	
5.	4		527		R189 G63 B71	
6.	14		187	14	Brown	Default
7.	8		281	8	Black	Default
8.	9		863	9	White	Default



Production Worksheet

Wilcom EmbroideryStudio - Designing



Design: **4**

Title:

Stitches: 9,188
 Height: 3.64 in
 Width: 4.50 in
 Colors: 8
 Colorway: Colorway 1
 Zoom: 1:1

Machine format: Tajima
 Color changes: 7
 Stops: 8
 Trims: 107
 Appliqués: 0
 Left: 58.4 mm
 Right: 56.0 mm
 Up: 59.7 mm
 Down: 32.9 mm
 EndX: 0.00 in
 EndY: 0.00 in
 Area: 16.42 in²
 Max stitch: 7.0 mm
 Min stitch: 0.0 mm
 Max jump: 7.0 mm
 Total thread: 134.24ft
 Total bobbin: 42.27ft

Stop Sequence:

#	N#	Color	St.	Code	Name	Chart
1.	1		2,978		R41 G166 B166	
2.	16		953	16	Sand	Default
3.	2		1,688		R255 G126 B145	
4.	3		1,290		R58 G232 B232	
5.	4		687		R189 G63 B71	
6.	14		218	14	Brown	Default
7.	8		368	8	Black	Default
8.	9		1,004	9	White	Default



Production Worksheet

Wilcom EmbroideryStudio - Designing



Design: **5**

Title:

Stitches: 11,743
Height: 4.47 in
Width: 5.51 in
Colors: 8
Colorway: Colorway 1
Zoom: 1:1



1

1

2

2

Production Worksheet

Wilcom EmbroideryStudio - Designing



Design: **5**

Title:

Stitches: 11,743
 Height: 4.47 in
 Width: 5.51 in
 Colors: 8
 Colorway: Colorway 1
 Zoom: 1:1

Machine format: Tajima
 Color changes: 7
 Stops: 8
 Trims: 115
 Appliqués: 0
 Left: 71.2 mm
 Right: 68.7 mm
 Up: 70.2 mm
 Down: 43.2 mm
 EndX: 0.00 in
 EndY: 0.00 in
 Area 24.58 in²
 Max stitch: 7.0 mm
 Min stitch: 0.0 mm
 Max jump: 7.0 mm
 Total thread: 182.03ft
 Total bobbin: 60.65ft

Stop Sequence:

#	N#	Color	St.	Code	Name	Chart
1.	1		3,723		R41 G166 B166	
2.	16		1,336	16	Sand	Default
3.	2		2,229		R255 G126 B145	
4.	3		1,771		R58 G232 B232	
5.	4		861		R189 G63 B71	
6.	14		235	14	Brown	Default
7.	8		421	8	Black	Default
8.	9		1,165	9	White	Default

Production Worksheet

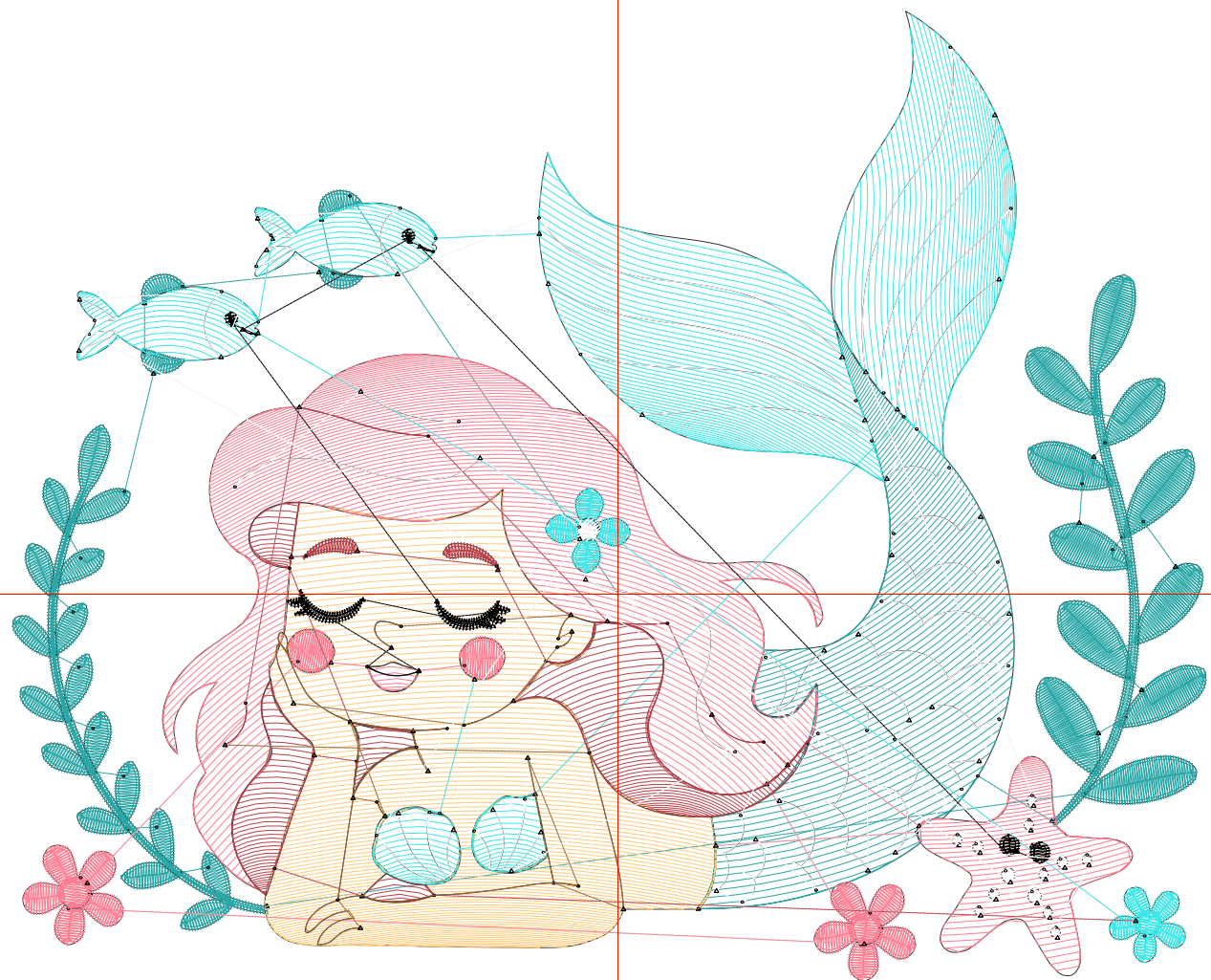
Wilcom EmbroideryStudio - Designing



Design: **6**

Title:

Stitches: 14,315
Height: 5.26 in
Width: 6.51 in
Colors: 8
Colorway: Colorway 1
Zoom: 1:1



Production Worksheet

Wilcom EmbroideryStudio - Designing



Design: **6**

Title:

Stitches: 14,315
 Height: 5.26 in
 Width: 6.51 in
 Colors: 8
 Colorway: Colorway 1
 Zoom: 1:1

Machine format: Tajima
 Color changes: 7
 Stops: 8
 Trims: 119
 Appliqués: 0
 Left: 83.9 mm
 Right: 81.4 mm
 Up: 80.2 mm
 Down: 53.5 mm
 EndX: 0.00 in
 EndY: 0.00 in
 Area 34.25 in²
 Max stitch: 7.0 mm
 Min stitch: 0.0 mm
 Max jump: 7.0 mm
 Total thread: 234.25ft
 Total bobbin: 81.59ft

Stop Sequence:

#	N#	Color	St.	Code	Name	Chart
1.	1		4,471		R41 G166 B166	
2.	16		1,775	16	Sand	Default
3.	2		2,805		R255 G126 B145	
4.	3		2,216		R58 G232 B232	
5.	4		1,063		R189 G63 B71	
6.	14		260	14	Brown	Default
7.	8		457	8	Black	Default
8.	9		1,266	9	White	Default

Production Worksheet

Wilcom EmbroideryStudio - Designing



Design: **7**

Title:

Stitches: 17,296
Height: 6.08 in
Width: 7.51 in
Colors: 8
Colorway: Colorway 1
Zoom: 1:1



Production Worksheet

Wilcom EmbroideryStudio - Designing



Design: **7**

Title:

Stitches: 17,296
 Height: 6.08 in
 Width: 7.51 in
 Colors: 8
 Colorway: Colorway 1
 Zoom: 1:1

Machine format: Tajima
 Color changes: 7
 Stops: 8
 Trims: 123
 Appliqués: 0
 Left: 96.6 mm
 Right: 94.1 mm
 Up: 90.7 mm
 Down: 63.8 mm
 EndX: 0.00 in
 EndY: 0.00 in
 Area 45.66 in²
 Max stitch: 7.0 mm
 Min stitch: 0.0 mm
 Max jump: 7.0 mm
 Total thread: 295.40ft
 Total bobbin: 106.24ft

Stop Sequence:

#	N#	Color	St.	Code	Name	Chart
1.	1		5,251		R41 G166 B166	
2.	16		2,315	16	Sand	Default
3.	2		3,470		R255 G126 B145	
4.	3		2,816		R58 G232 B232	
5.	4		1,282		R189 G63 B71	
6.	14		284	14	Brown	Default
7.	8		535	8	Black	Default
8.	9		1,341	9	White	Default