

# Production Worksheet

Wilcom EmbroideryStudio - Designing



Design: **3**

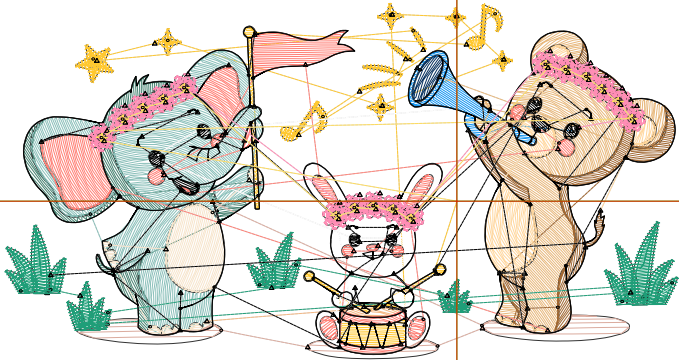
Title:

Stitches: 12,857  
 Height: 1.83 in  
 Width: 3.51 in  
 Colors: 17  
 Colorway: Colorway 1  
 Zoom: 1:1

Machine format: Tajima  
 Color changes: 16  
 Stops: 17  
 Trims: 161  
 Appliqués: 0  
 Left: 59.8 mm  
 Right: 29.4 mm  
 Up: 26.2 mm  
 Down: 20.3 mm  
 EndX: 0.00 in  
 EndY: 0.00 in  
 Area 6.42 in<sup>2</sup>  
 Max stitch: 11.9 mm  
 Min stitch: 0.0 mm  
 Max jump: 7.0 mm  
 Total thread: 150.95ft  
 Total bobbin: 36.15ft

Stop Sequence:

#	N#	Color	St.	Code	Name	Chart
1.	4		1,229		R255 G200 B48	
2.	6		507		R71 G130 B113	
3.	7		1,278		R139 G192 B186	
4.	8		313		R247 G229 B204	
5.	5		60		R245 G184 B131	
6.	9		815	9	White	Default
7.	10		249		R21 G149 B240	
8.	17		51		R7 G49 B94	
9.	12		997		R232 G184 B124	
10.	13		621		R161 G104 B51	
11.	14		403		R255 G215 B158	
12.	2		926		R255 G129 B119	
13.	16		139		R219 G172 B159	
14.	3		967		R31 G158 B120	
15.	15		1,425		R0 G0 B0	
16.	11		2,622		R255 G141 B181	
17.	18		253		R255 G220 B92	



# Production Worksheet

Wilcom EmbroideryStudio - Designing



Design: **4**

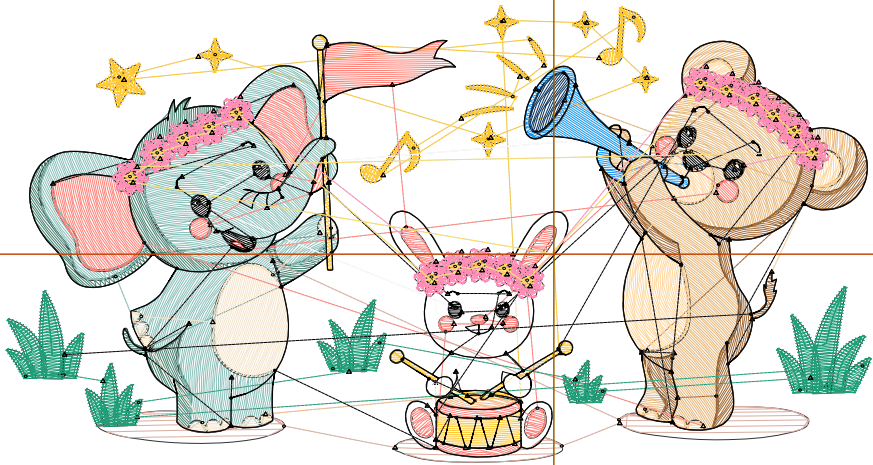
Title:

Stitches: 16,273  
 Height: 2.38 in  
 Width: 4.51 in  
 Colors: 17  
 Colorway: Colorway 1  
 Zoom: 1:1

Machine format: Tajima  
 Color changes: 16  
 Stops: 17  
 Trims: 172  
 Appliqués: 0  
 Left: 72.5 mm  
 Right: 42.1 mm  
 Up: 32.9 mm  
 Down: 27.5 mm  
 EndX: 0.00 in  
 EndY: 0.00 in  
 Area: 10.72 in<sup>2</sup>  
 Max stitch: 11.4 mm  
 Min stitch: 0.0 mm  
 Max jump: 7.0 mm  
 Total thread: 202.68ft  
 Total bobbin: 53.52ft

Stop Sequence:

#	N#	Color	St.	Code	Name	Chart
1.	4		1,562		R255 G200 B48	
2.	6		687		R71 G130 B113	
3.	7		1,855		R139 G192 B186	
4.	8		438		R247 G229 B204	
5.	5		66		R245 G184 B131	
6.	9		1,090	9	White	Default
7.	10		347		R21 G149 B240	
8.	17		69		R7 G49 B94	
9.	12		1,470		R232 G184 B124	
10.	13		823		R161 G104 B51	
11.	14		557		R255 G215 B158	
12.	2		1,257		R255 G129 B119	
13.	16		208		R219 G172 B159	
14.	3		1,193		R31 G158 B120	
15.	15		1,675		R0 G0 B0	
16.	11		2,544		R255 G141 B181	
17.	18		430		R255 G220 B92	



# Production Worksheet

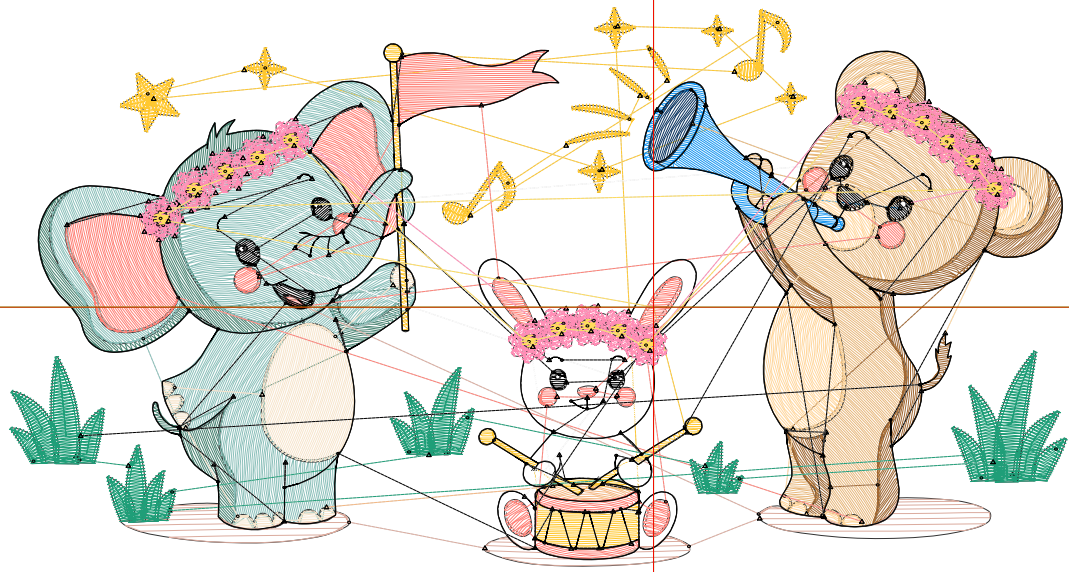
Wilcom EmbroideryStudio - Designing



Design: **5**

Title:

Stitches: 20,756  
Height: 2.91 in  
Width: 5.51 in  
Colors: 17  
Colorway: Colorway 1  
Zoom: 1:1



# Production Worksheet

Wilcom EmbroideryStudio - Designing



Design: **5**

Title:

Stitches: 20,756  
 Height: 2.91 in  
 Width: 5.51 in  
 Colors: 17  
 Colorway: Colorway 1  
 Zoom: 1:1

Machine format: Tajima  
 Color changes: 16  
 Stops: 17  
 Trims: 197  
 Appliqués: 0  
 Left: 85.2 mm  
 Right: 54.8 mm  
 Up: 39.6 mm  
 Down: 34.2 mm  
 EndX: 0.00 in  
 EndY: 0.00 in  
 Area 16.02 in<sup>2</sup>  
 Max stitch: 11.7 mm  
 Min stitch: 0.0 mm  
 Max jump: 7.0 mm  
 Total thread: 269.55ft  
 Total bobbin: 75.72ft

Stop Sequence:

#	N#	Color	St.	Code	Name	Chart
1.	4		1,926		R255 G200 B48	
2.	6		879		R71 G130 B113	
3.	7		2,507		R139 G192 B186	
4.	8		576		R247 G229 B204	
5.	5		97		R245 G184 B131	
6.	9		1,476	9	White	Default
7.	10		454		R21 G149 B240	
8.	17		87		R7 G49 B94	
9.	12		1,992		R232 G184 B124	
10.	13		1,086		R161 G104 B51	
11.	14		730		R255 G215 B158	
12.	2		1,607		R255 G129 B119	
13.	16		258		R219 G172 B159	
14.	3		1,411		R31 G158 B120	
15.	15		1,925		R0 G0 B0	
16.	11		3,268		R255 G141 B181	
17.	18		475		R255 G220 B92	

# Production Worksheet

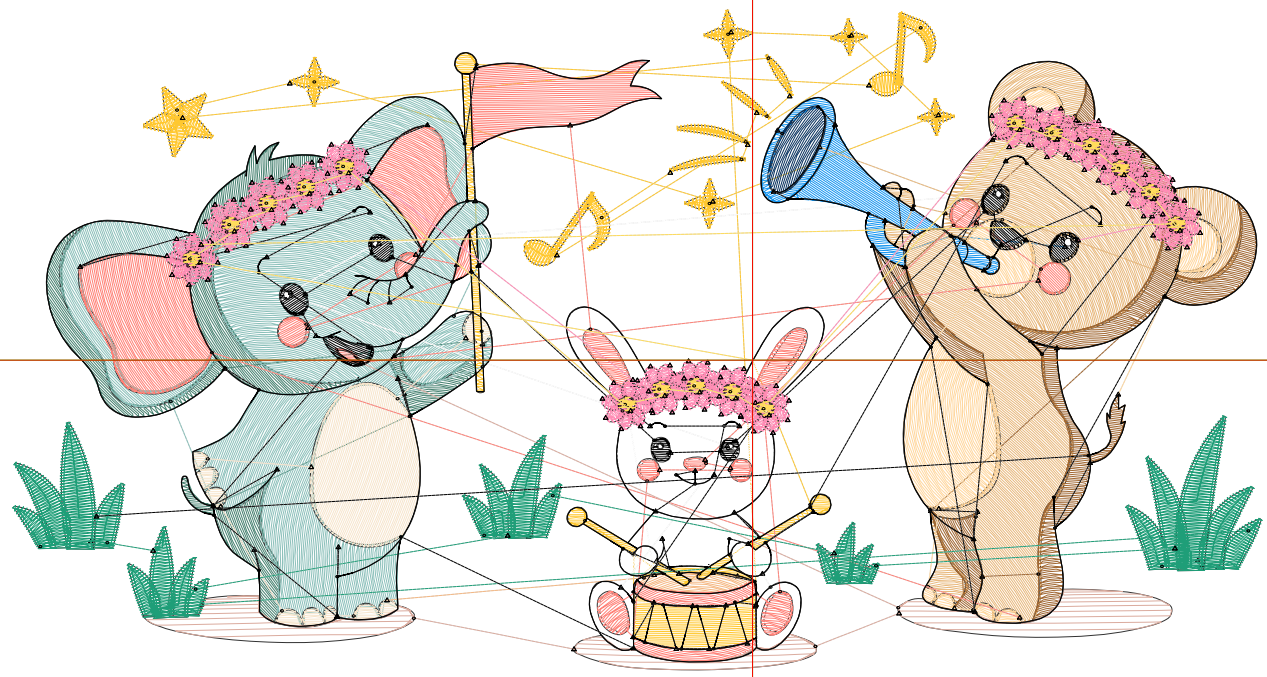
Wilcom EmbroideryStudio - Designing



Design: **6**

Title:

Stitches: 26,451  
Height: 3.44 in  
Width: 6.51 in  
Colors: 17  
Colorway: Colorway 1  
Zoom: 1:1



# Production Worksheet

Wilcom EmbroideryStudio - Designing



Design: **6**

Title:

Stitches: 26,451  
 Height: 3.44 in  
 Width: 6.51 in  
 Colors: 17  
 Colorway: Colorway 1  
 Zoom: 1:1

Machine format: Tajima  
 Color changes: 16  
 Stops: 17  
 Trims: 300  
 Appliqués: 0  
 Left: 97.9 mm  
 Right: 67.5 mm  
 Up: 46.3 mm  
 Down: 41.0 mm  
 EndX: 0.00 in  
 EndY: 0.00 in  
 Area 22.37 in<sup>2</sup>  
 Max stitch: 7.0 mm  
 Min stitch: 0.0 mm  
 Max jump: 7.0 mm  
 Total thread: 351.26ft  
 Total bobbin: 102.00ft

Stop Sequence:

#	N#	Color	St.	Code	Name	Chart
1.	4		2,298		R255 G200 B48	
2.	6		1,118		R71 G130 B113	
3.	7		3,266		R139 G192 B186	
4.	8		715		R247 G229 B204	
5.	5		114		R245 G184 B131	
6.	9		1,860	9	White	Default
7.	10		564		R21 G149 B240	
8.	17		109		R7 G49 B94	
9.	12		2,568		R232 G184 B124	
10.	13		1,574		R161 G104 B51	
11.	14		925		R255 G215 B158	
12.	2		2,041		R255 G129 B119	
13.	16		302		R219 G172 B159	
14.	3		1,661		R31 G158 B120	
15.	15		2,115		R0 G0 B0	
16.	11		4,738		R255 G141 B181	
17.	18		481		R255 G220 B92	

# Production Worksheet

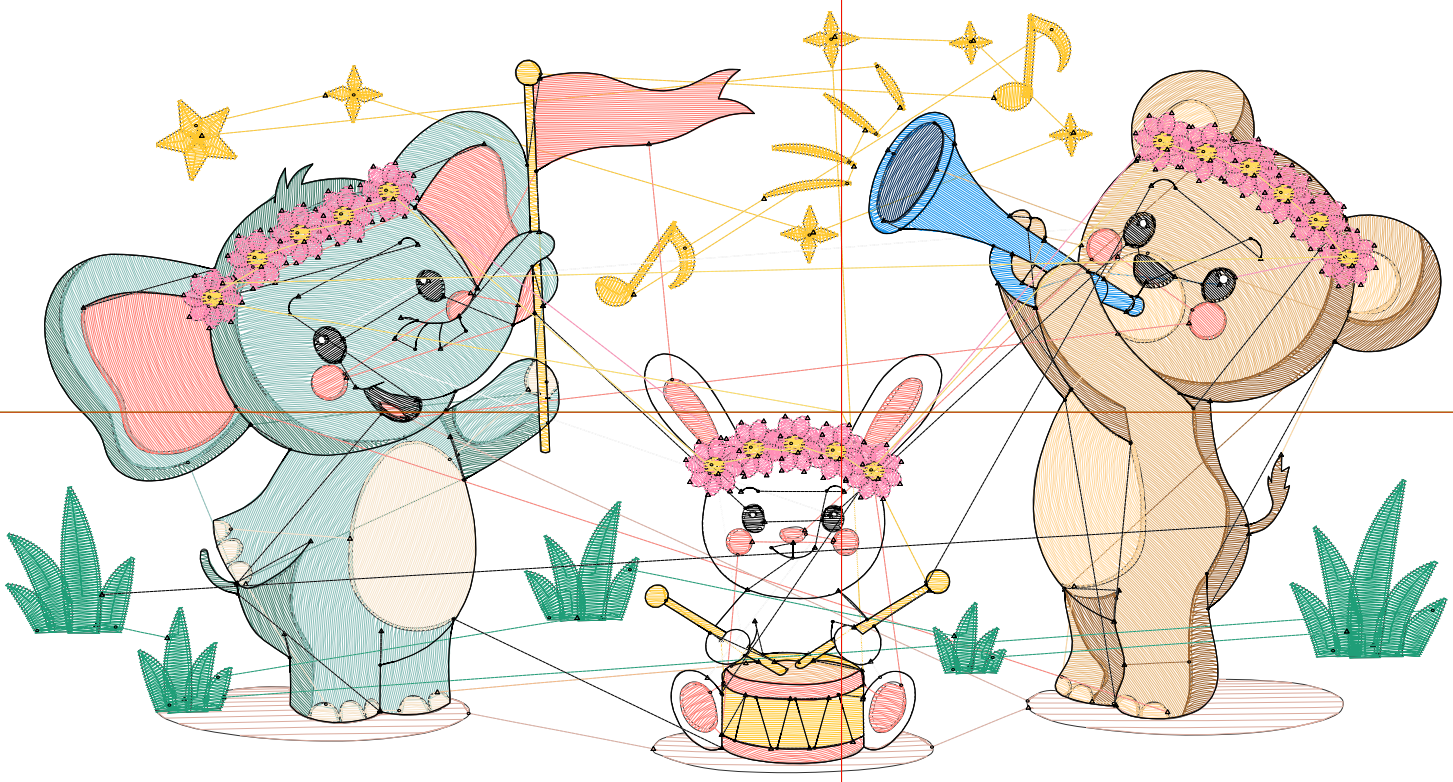
Wilcom EmbroideryStudio - Designing



Design: 7

Title:

Stitches: 31,213  
Height: 3.93 in  
Width: 7.51 in  
Colors: 17  
Colorway: Colorway 1  
Zoom: 1:1



# Production Worksheet

Wilcom EmbroideryStudio - Designing



Design: **7**

Title:

Stitches: 31,213  
 Height: 3.93 in  
 Width: 7.51 in  
 Colors: 17  
 Colorway: Colorway 1  
 Zoom: 1:1

Machine format: Tajima  
 Color changes: 16  
 Stops: 17  
 Trims: 307  
 Appliqués: 0  
 Left: 110.6 mm  
 Right: 80.2 mm  
 Up: 53.0 mm  
 Down: 46.7 mm  
 EndX: 0.00 in  
 EndY: 0.00 in  
 Area: 29.50 in<sup>2</sup>  
 Max stitch: 7.0 mm  
 Min stitch: 0.0 mm  
 Max jump: 7.0 mm  
 Total thread: 432.60ft  
 Total bobbin: 131.68ft

Stop Sequence:

#	N#	Color	St.	Code	Name	Chart
1.	4		2,669		R255 G200 B48	
2.	6		1,408		R71 G130 B113	
3.	7		4,084		R139 G192 B186	
4.	8		894		R247 G229 B204	
5.	5		134		R245 G184 B131	
6.	9		2,305	9	White	Default
7.	10		689		R21 G149 B240	
8.	17		140		R7 G49 B94	
9.	12		3,215		R232 G184 B124	
10.	13		1,870		R161 G104 B51	
11.	14		1,159		R255 G215 B158	
12.	2		2,480		R255 G129 B119	
13.	16		376		R219 G172 B159	
14.	3		1,910		R31 G158 B120	
15.	15		2,323		R0 G0 B0	
16.	11		5,001		R255 G141 B181	
17.	18		554		R255 G220 B92	