

# Production Worksheet

Wilcom EmbroideryStudio - Designing

Stitches: 21,807  
Height: 3.30 in  
Width: 3.51 in  
Colors: 9  
Colorway: Colorway 1  
Zoom: 1:1



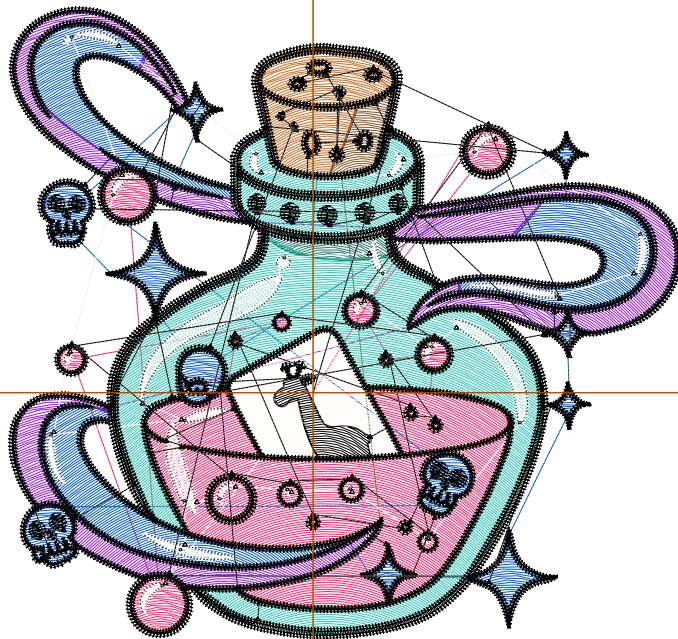
Design: 3

Title:

Machine format: Tajima  
Color changes: 8  
Stops: 9  
Trims: 121  
Appliqués: 0  
Left: 40.3 mm  
Right: 48.9 mm  
Up: 51.1 mm  
Down: 32.6 mm  
EndX: 0.00 in  
EndY: 0.00 in  
Area: 11.58 in<sup>2</sup>  
Max stitch: 8.4 mm  
Min stitch: 0.0 mm  
Max jump: 7.0 mm  
Total thread: 274.11ft  
Total bobbin: 75.89ft

### Stop Sequence:

#	N#	Color	St.	Code	Name	Chart
1.	3		2,034		R255 G35 B108	
2.	2		2,157		R0 G90 B207	
3.	4		1,446		R153 G24 B222	
4.	6		195		R140 G84 B38	
5.	7		367		R204 G110 B38	
6.	5		126		R38 G120 B109	
7.	9		2,299		R44 G201 B180	
8.	8		1,697		R255 G252 B250	
9.	10		11,484		R0 G0 B0	



# Production Worksheet

Wilcom EmbroideryStudio - Designing



Design: **4**

Title:

Stitches: 29,320  
Height: 4.23 in  
Width: 4.51 in  
Colors: 9  
Colorway: Colorway 1  
Zoom: 1:1

Machine format: Tajima  
Color changes: 8  
Stops: 9  
Trims: 125  
Appliqués: 0  
Left: 53.0 mm  
Right: 61.6 mm  
Up: 63.0 mm  
Down: 44.5 mm  
EndX: 0.00 in  
EndY: 0.00 in  
Area: 19.11 in<sup>2</sup>  
Max stitch: 10.7 mm  
Min stitch: 0.0 mm  
Max jump: 7.0 mm  
Total thread: 391.33ft  
Total bobbin: 116.14ft

### Stop Sequence:

#	N#	Color	St.	Code	Name	Chart
1.	3		3,014		R255 G35 B108	
2.	2		3,195		R0 G90 B207	
3.	4		2,139		R153 G24 B222	
4.	6		275		R140 G84 B38	
5.	7		533		R204 G110 B38	
6.	5		195		R38 G120 B109	
7.	9		3,369		R44 G201 B180	
8.	8		2,184		R255 G252 B250	
9.	10		14,414		R0 G0 B0	



# Production Worksheet

Wilcom EmbroideryStudio - Designing



Design: **5**

Title:

Stitches: 37,669  
Height: 5.17 in  
Width: 5.51 in  
Colors: 9  
Colorway: Colorway 1  
Zoom: 1:1



# Production Worksheet

Wilcom EmbroideryStudio - Designing



Design: **5**

Title:

Stitches: 37,669  
 Height: 5.17 in  
 Width: 5.51 in  
 Colors: 9  
 Colorway: Colorway 1  
 Zoom: 1:1

Machine format: Tajima  
 Color changes: 8  
 Stops: 9  
 Trims: 127  
 Appliqués: 0  
 Left: 65.7 mm  
 Right: 74.3 mm  
 Up: 74.9 mm  
 Down: 56.5 mm  
 EndX: 0.00 in  
 EndY: 0.00 in  
 Area 28.51 in<sup>2</sup>  
 Max stitch: 7.0 mm  
 Min stitch: 0.0 mm  
 Max jump: 7.0 mm  
 Total thread: 528.34ft  
 Total bobbin: 164.87ft

Stop Sequence:

#	N#	Color	St.	Code	Name	Chart
1.	3		4,204		R255 G35 B108	
2.	2		4,287		R0 G90 B207	
3.	4		2,855		R153 G24 B222	
4.	6		369		R140 G84 B38	
5.	7		787		R204 G110 B38	
6.	5		261		R38 G120 B109	
7.	9		4,720		R44 G201 B180	
8.	8		2,747		R255 G252 B250	
9.	10		17,437		R0 G0 B0	

# Production Worksheet

Wilcom EmbroideryStudio - Designing



Design: 6

Title:

Stitches: 46,802  
Height: 6.11 in  
Width: 6.51 in  
Colors: 9  
Colorway: Colorway 1  
Zoom: 1:1



1

1

2

2

# Production Worksheet

Wilcom EmbroideryStudio - Designing



Design: **6**

Title:

Stitches: 46,802  
 Height: 6.11 in  
 Width: 6.51 in  
 Colors: 9  
 Colorway: Colorway 1  
 Zoom: 1:1

Machine format: Tajima  
 Color changes: 8  
 Stops: 9  
 Trims: 131  
 Appliqués: 0  
 Left: 78.4 mm  
 Right: 87.0 mm  
 Up: 86.8 mm  
 Down: 68.4 mm  
 EndX: 0.00 in  
 EndY: 0.00 in  
 Area 39.79 in<sup>2</sup>  
 Max stitch: 7.0 mm  
 Min stitch: 0.0 mm  
 Max jump: 7.0 mm  
 Total thread: 685.49ft  
 Total bobbin: 222.48ft

Stop Sequence:

#	N#	Color	St.	Code	Name	Chart
1.	3		5,606		R255 G35 B108	
2.	2		5,514		R0 G90 B207	
3.	4		3,756		R153 G24 B222	
4.	6		467		R140 G84 B38	
5.	7		1,074		R204 G110 B38	
6.	5		315		R38 G120 B109	
7.	9		6,261		R44 G201 B180	
8.	8		3,314		R255 G252 B250	
9.	10		20,493		R0 G0 B0	

# Production Worksheet

Wilcom EmbroideryStudio - Designing



Design: 7

Title:

Stitches: 56,680  
Height: 7.05 in  
Width: 7.51 in  
Colors: 9  
Colorway: Colorway 1  
Zoom: 1:1



# Production Worksheet

Wilcom EmbroideryStudio - Designing



Design: **7**

Title:

Stitches: 56,680  
 Height: 7.05 in  
 Width: 7.51 in  
 Colors: 9  
 Colorway: Colorway 1  
 Zoom: 1:1

Machine format: Tajima  
 Color changes: 8  
 Stops: 9  
 Trims: 134  
 Appliqués: 0  
 Left: 91.1 mm  
 Right: 99.7 mm  
 Up: 98.7 mm  
 Down: 80.3 mm  
 EndX: 0.00 in  
 EndY: 0.00 in  
 Area 52.95 in<sup>2</sup>  
 Max stitch: 7.0 mm  
 Min stitch: 0.0 mm  
 Max jump: 7.0 mm  
 Total thread: 861.49ft  
 Total bobbin: 288.37ft

Stop Sequence:

#	N#	Color	St.	Code	Name	Chart
1.	3		7,174		R255 G35 B108	
2.	2		6,960		R0 G90 B207	
3.	4		4,709		R153 G24 B222	
4.	6		572		R140 G84 B38	
5.	7		1,343		R204 G110 B38	
6.	5		411		R38 G120 B109	
7.	9		7,929		R44 G201 B180	
8.	8		3,978		R255 G252 B250	
9.	10		23,602		R0 G0 B0	