

Production Worksheet

Wilcom EmbroideryStudio - Designing



Design: **3**

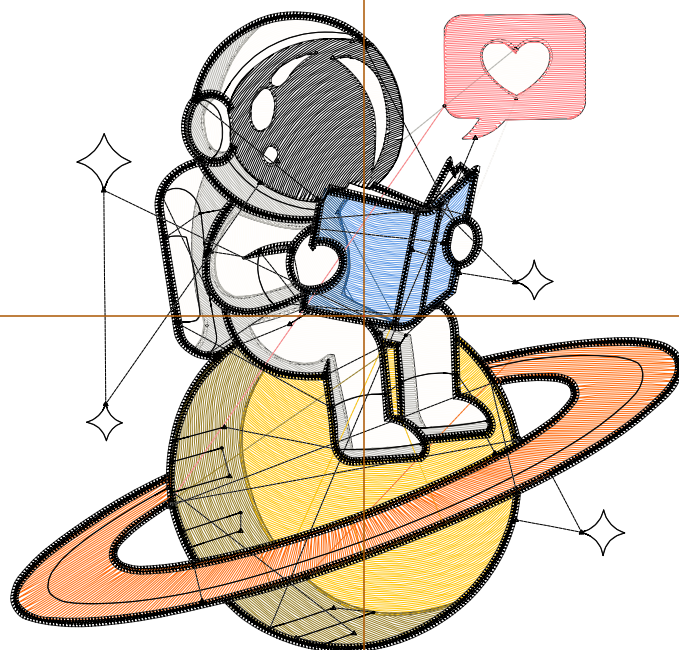
Title:

Stitches: 14,128
 Height: 3.34 in
 Width: 3.50 in
 Colors: 9
 Colorway: Colorway 1
 Zoom: 1:1

Machine format: Tajima
 Color changes: 8
 Stops: 9
 Trims: 64
 Appliqués: 0
 Left: 46.7 mm
 Right: 42.2 mm
 Up: 40.2 mm
 Down: 44.5 mm
 EndX: 0.00 in
 EndY: 0.00 in
 Area: 11.67 in²
 Max stitch: 6.9 mm
 Min stitch: 0.0 mm
 Max jump: 6.9 mm
 Total thread: 197.13ft
 Total bobbin: 60.13ft

Stop Sequence:

| # | N# | Color | St. | Code | Name | Chart |
|----|----|-------|-------|------|----------------|---------|
| 1. | 10 | | 2,137 | | R255 G253 B250 | |
| 2. | 9 | | 1,133 | | R184 G183 B177 | |
| 3. | 7 | | 537 | | R101 G158 B232 | |
| 4. | 6 | | 219 | | R42 G96 B153 | |
| 5. | 5 | | 1,428 | | R255 G197 B8 | |
| 6. | 4 | | 760 | | R153 G128 B39 | |
| 7. | 3 | | 1,275 | | R255 G112 B22 | |
| 8. | 2 | | 438 | | R255 G127 B130 | |
| 9. | 8 | | 6,199 | 8 | Black | Default |



Production Worksheet

Wilcom EmbroideryStudio - Designing



Design: **4**

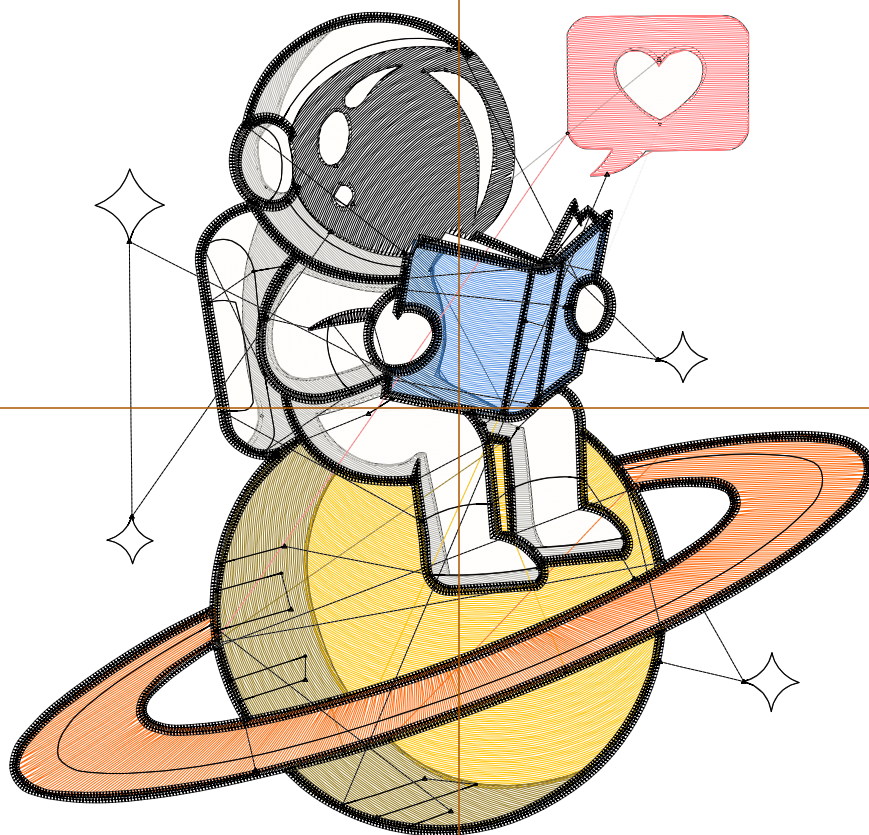
Title:

Stitches: 19,757
 Height: 4.29 in
 Width: 4.50 in
 Colors: 9
 Colorway: Colorway 1
 Zoom: 1:1

Machine format: Tajima
 Color changes: 8
 Stops: 9
 Trims: 65
 Appliqués: 0
 Left: 59.4 mm
 Right: 54.8 mm
 Up: 52.3 mm
 Down: 56.6 mm
 EndX: 0.00 in
 EndY: 0.00 in
 Area: 19.29 in²
 Max stitch: 6.9 mm
 Min stitch: 0.0 mm
 Max jump: 7.0 mm
 Total thread: 292.71ft
 Total bobbin: 94.88ft

Stop Sequence:

| # | N# | Color | St. | Code | Name | Chart |
|----|----|-------|-------|------|----------------|---------|
| 1. | 10 | | 3,143 | | R255 G253 B250 | |
| 2. | 9 | | 1,588 | | R184 G183 B177 | |
| 3. | 7 | | 833 | | R101 G158 B232 | |
| 4. | 6 | | 310 | | R42 G96 B153 | |
| 5. | 5 | | 2,169 | | R255 G197 B8 | |
| 6. | 4 | | 1,163 | | R153 G128 B39 | |
| 7. | 3 | | 1,884 | | R255 G112 B22 | |
| 8. | 2 | | 659 | | R255 G127 B130 | |
| 9. | 8 | | 8,006 | 8 | Black | Default |



Production Worksheet

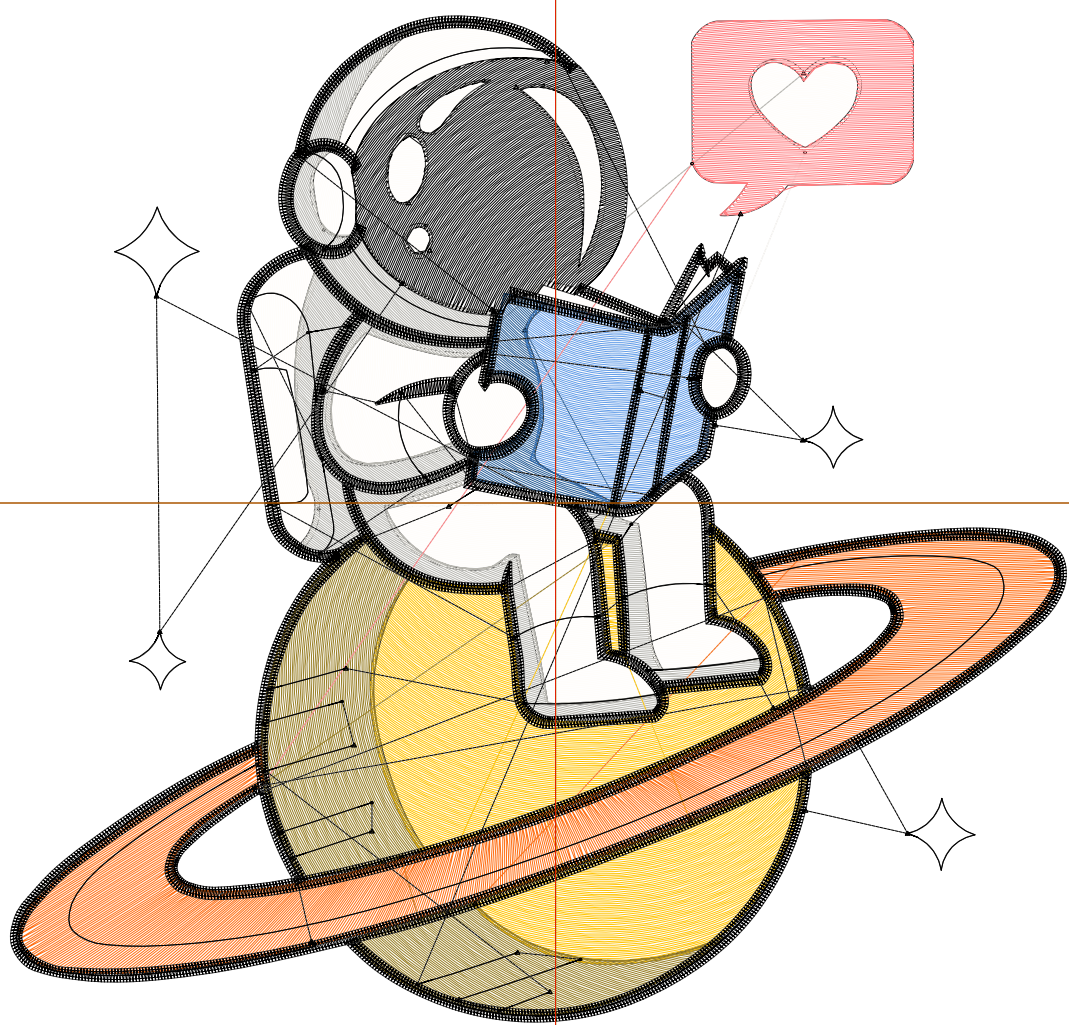
Wilcom EmbroideryStudio - Designing



Design: **5**

Title:

Stitches: 26,178
Height: 5.24 in
Width: 5.50 in
Colors: 9
Colorway: Colorway 1
Zoom: 1:1



Production Worksheet

Wilcom EmbroideryStudio - Designing



Design: **5**

Title:

Stitches: 26,178
 Height: 5.24 in
 Width: 5.50 in
 Colors: 9
 Colorway: Colorway 1
 Zoom: 1:1

Machine format: Tajima
 Color changes: 8
 Stops: 9
 Trims: 65
 Appliqués: 0
 Left: 72.1 mm
 Right: 67.6 mm
 Up: 64.4 mm
 Down: 68.7 mm
 EndX: 0.00 in
 EndY: 0.00 in
 Area 28.82 in²
 Max stitch: 6.8 mm
 Min stitch: 0.0 mm
 Max jump: 6.8 mm
 Total thread: 408.36ft
 Total bobbin: 138.45ft

Stop Sequence:

| # | N# | Color | St. | Code | Name | Chart |
|----|----|-------|-------|------|----------------|---------|
| 1. | 10 | | 4,253 | | R255 G253 B250 | |
| 2. | 9 | | 2,272 | | R184 G183 B177 | |
| 3. | 7 | | 1,163 | | R101 G158 B232 | |
| 4. | 6 | | 412 | | R42 G96 B153 | |
| 5. | 5 | | 3,026 | | R255 G197 B8 | |
| 6. | 4 | | 1,627 | | R153 G128 B39 | |
| 7. | 3 | | 2,607 | | R255 G112 B22 | |
| 8. | 2 | | 909 | | R255 G127 B130 | |
| 9. | 8 | | 9,907 | 8 | Black | Default |

Production Worksheet

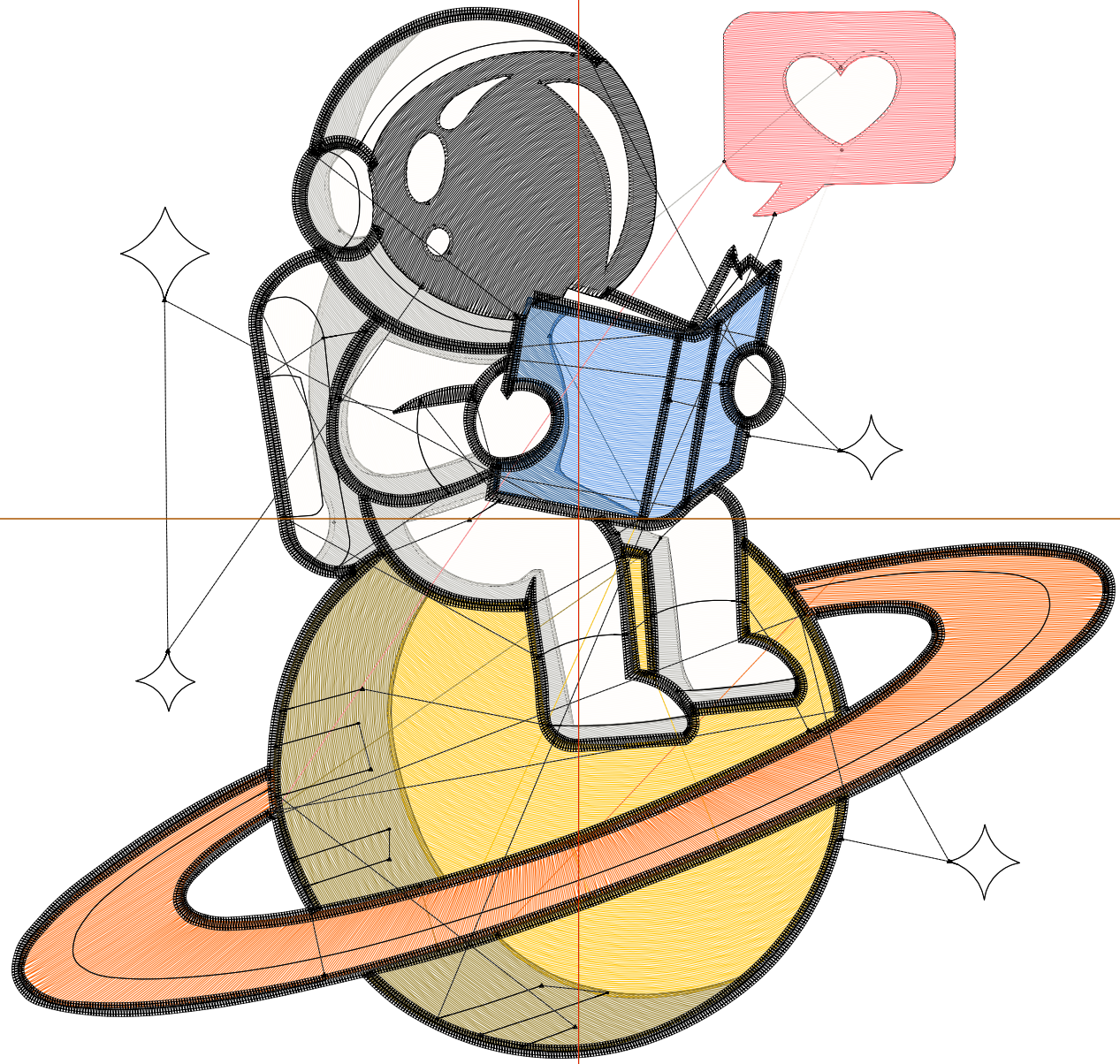
Wilcom EmbroideryStudio - Designing



Design: **6**

Title:

Stitches: 33,392
Height: 6.19 in
Width: 6.50 in
Colors: 9
Colorway: Colorway 1
Zoom: 1:1



Production Worksheet

Wilcom EmbroideryStudio - Designing



Design: **6**

Title:

Stitches: 33,392
 Height: 6.19 in
 Width: 6.50 in
 Colors: 9
 Colorway: Colorway 1
 Zoom: 1:1

Machine format: Tajima
 Color changes: 8
 Stops: 9
 Trims: 65
 Appliqués: 0
 Left: 84.8 mm
 Right: 80.3 mm
 Up: 76.5 mm
 Down: 80.8 mm
 EndX: 0.00 in
 EndY: 0.00 in
 Area 40.26 in²
 Max stitch: 6.9 mm
 Min stitch: 0.0 mm
 Max jump: 7.0 mm
 Total thread: 542.50ft
 Total bobbin: 189.89ft

Stop Sequence:

| # | N# | Color | St. | Code | Name | Chart |
|----|----|-------|--------|------|----------------|---------|
| 1. | 10 | | 5,563 | | R255 G253 B250 | |
| 2. | 9 | | 2,962 | | R184 G183 B177 | |
| 3. | 7 | | 1,568 | | R101 G158 B232 | |
| 4. | 6 | | 519 | | R42 G96 B153 | |
| 5. | 5 | | 4,067 | | R255 G197 B8 | |
| 6. | 4 | | 2,166 | | R153 G128 B39 | |
| 7. | 3 | | 3,436 | | R255 G112 B22 | |
| 8. | 2 | | 1,187 | | R255 G127 B130 | |
| 9. | 8 | | 11,922 | 8 | Black | Default |

Production Worksheet

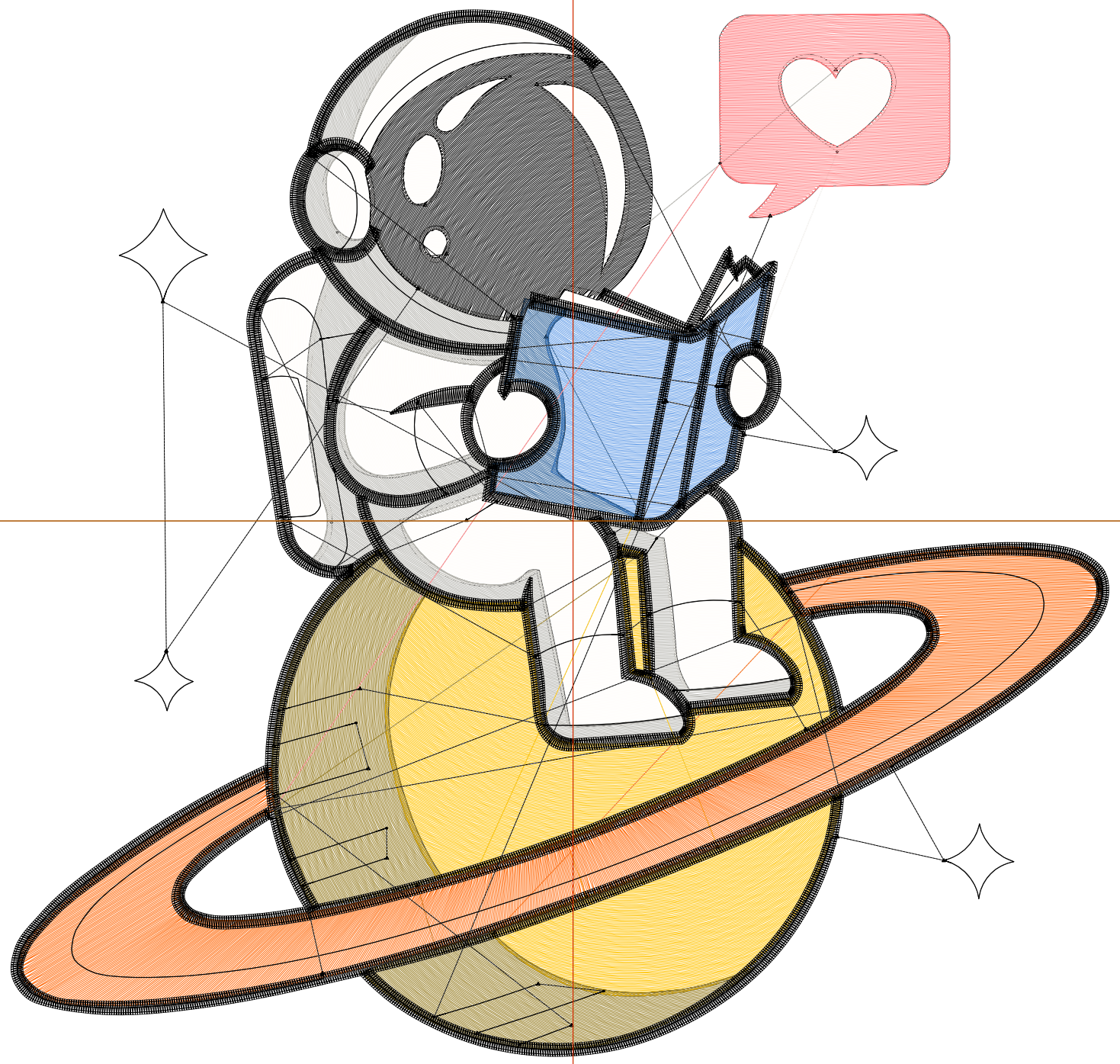
Wilcom EmbroideryStudio - Designing



Design: **7**

Title:

Stitches: 41,473
Height: 7.15 in
Width: 7.50 in
Colors: 9
Colorway: Colorway 1
Zoom: 1:1



Production Worksheet

Wilcom EmbroideryStudio - Designing



Design: **7**

Title:

Stitches: 41,473
 Height: 7.15 in
 Width: 7.50 in
 Colors: 9
 Colorway: Colorway 1
 Zoom: 1:1

Machine format: Tajima
 Color changes: 8
 Stops: 9
 Trims: 66
 Appliqués: 0
 Left: 97.5 mm
 Right: 93.0 mm
 Up: 88.6 mm
 Down: 92.9 mm
 EndX: 0.00 in
 EndY: 0.00 in
 Area 53.59 in²
 Max stitch: 7.0 mm
 Min stitch: 0.0 mm
 Max jump: 7.0 mm
 Total thread: 696.20ft
 Total bobbin: 249.55ft

Stop Sequence:

| # | N# | Color | St. | Code | Name | Chart |
|----|----|-------|--------|------|----------------|---------|
| 1. | 10 | | 7,174 | | R255 G253 B250 | |
| 2. | 9 | | 3,652 | | R184 G183 B177 | |
| 3. | 7 | | 2,040 | | R101 G158 B232 | |
| 4. | 6 | | 637 | | R42 G96 B153 | |
| 5. | 5 | | 5,209 | | R255 G197 B8 | |
| 6. | 4 | | 2,790 | | R153 G128 B39 | |
| 7. | 3 | | 4,427 | | R255 G112 B22 | |
| 8. | 2 | | 1,525 | | R255 G127 B130 | |
| 9. | 8 | | 14,017 | 8 | Black | Default |