

# Production Worksheet

Wilcom EmbroideryStudio - Designing



Design: **3**

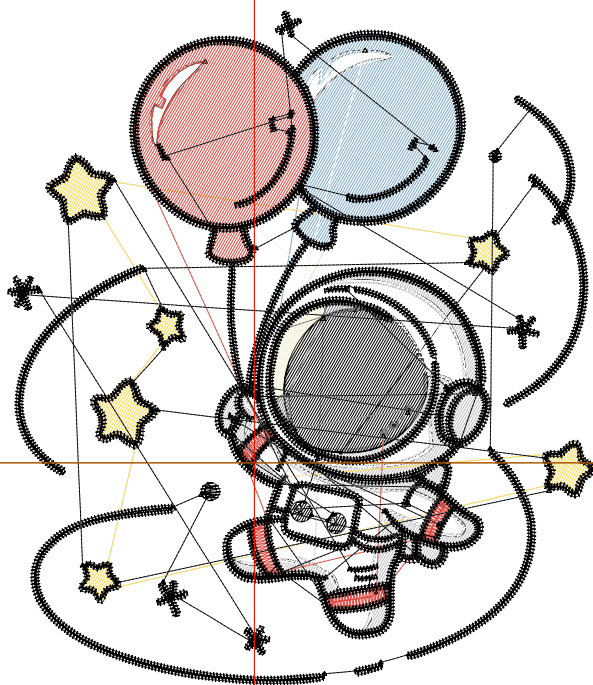
Title:

Stitches: 12,507  
 Height: 3.51 in  
 Width: 3.07 in  
 Colors: 8  
 Colorway: Colorway 1  
 Zoom: 1:1

Machine format: Tajima  
 Color changes: 8  
 Stops: 9  
 Trims: 75  
 Appliqués: 0  
 Left: 32.6 mm  
 Right: 45.4 mm  
 Up: 59.8 mm  
 Down: 29.3 mm  
 EndX: 0.00 in  
 EndY: 0.00 in  
 Area: 10.77 in<sup>2</sup>  
 Max stitch: 11.0 mm  
 Min stitch: 0.0 mm  
 Max jump: 6.9 mm  
 Total thread: 164.52ft  
 Total bobbin: 47.11ft

Stop Sequence:

#	N#	Color	St.	Code	Name	Chart
1.	4		592	R130 G171 B204		
2.	3		77	R245 G238 B201		
3.	14		1,137	14 Brown		Default
4.	12		488	12 Orange		Default
5.	8		383	8 Black		Default
6.	9		1,247	9 White		Default
7.	15		135	15 Pink		Default
8.	2		894	R222 G74 B66		
9.	8		7,552	8 Black		Default



# Production Worksheet

Wilcom EmbroideryStudio - Designing



Design: **4**

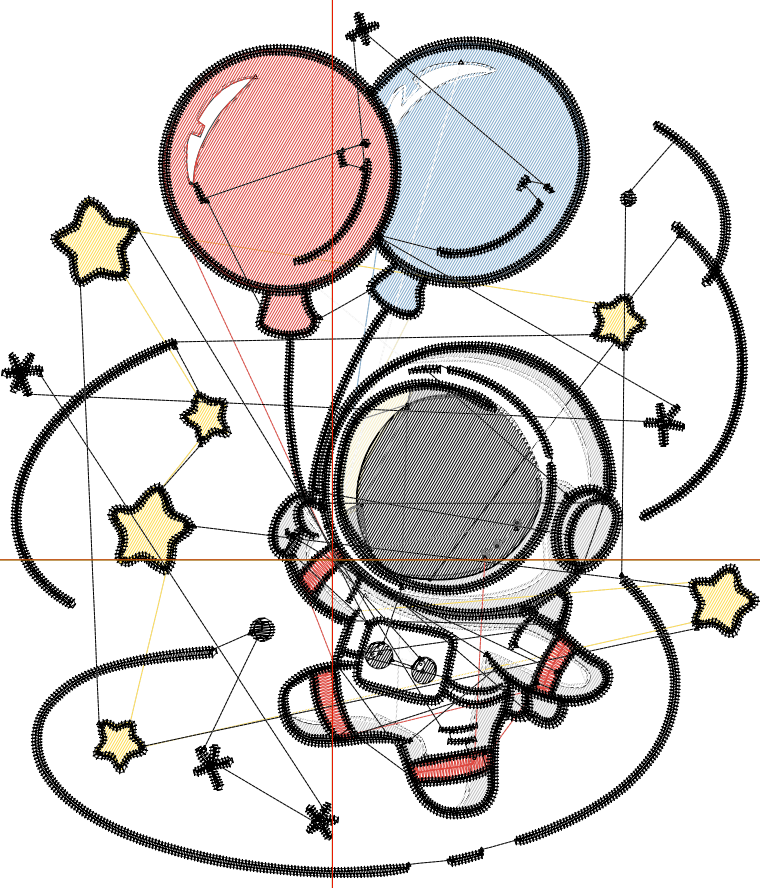
Title:

Stitches: 16,538  
 Height: 4.51 in  
 Width: 3.95 in  
 Colors: 8  
 Colorway: Colorway 1  
 Zoom: 1:1

Machine format: Tajima  
 Color changes: 8  
 Stops: 9  
 Trims: 79  
 Appliqués: 0  
 Left: 43.7 mm  
 Right: 56.5 mm  
 Up: 72.5 mm  
 Down: 42.0 mm  
 EndX: 0.00 in  
 EndY: 0.00 in  
 Area: 17.79 in<sup>2</sup>  
 Max stitch: 9.6 mm  
 Min stitch: 0.0 mm  
 Max jump: 6.9 mm  
 Total thread: 232.67ft  
 Total bobbin: 71.82ft

Stop Sequence:

#	N#	Color	St.	Code	Name	Chart
1.	4		903	R130	G171 B204	
2.	3		108	R245	G238 B201	
3.	14		1,575	14	Brown	Default
4.	12		645	12	Orange	Default
5.	8		580	8	Black	Default
6.	9		1,764	9	White	Default
7.	15		178	15	Pink	Default
8.	2		1,271	R222	G74 B66	
9.	8		9,512	8	Black	Default



# Production Worksheet

Wilcom EmbroideryStudio - Designing



Design: **5**

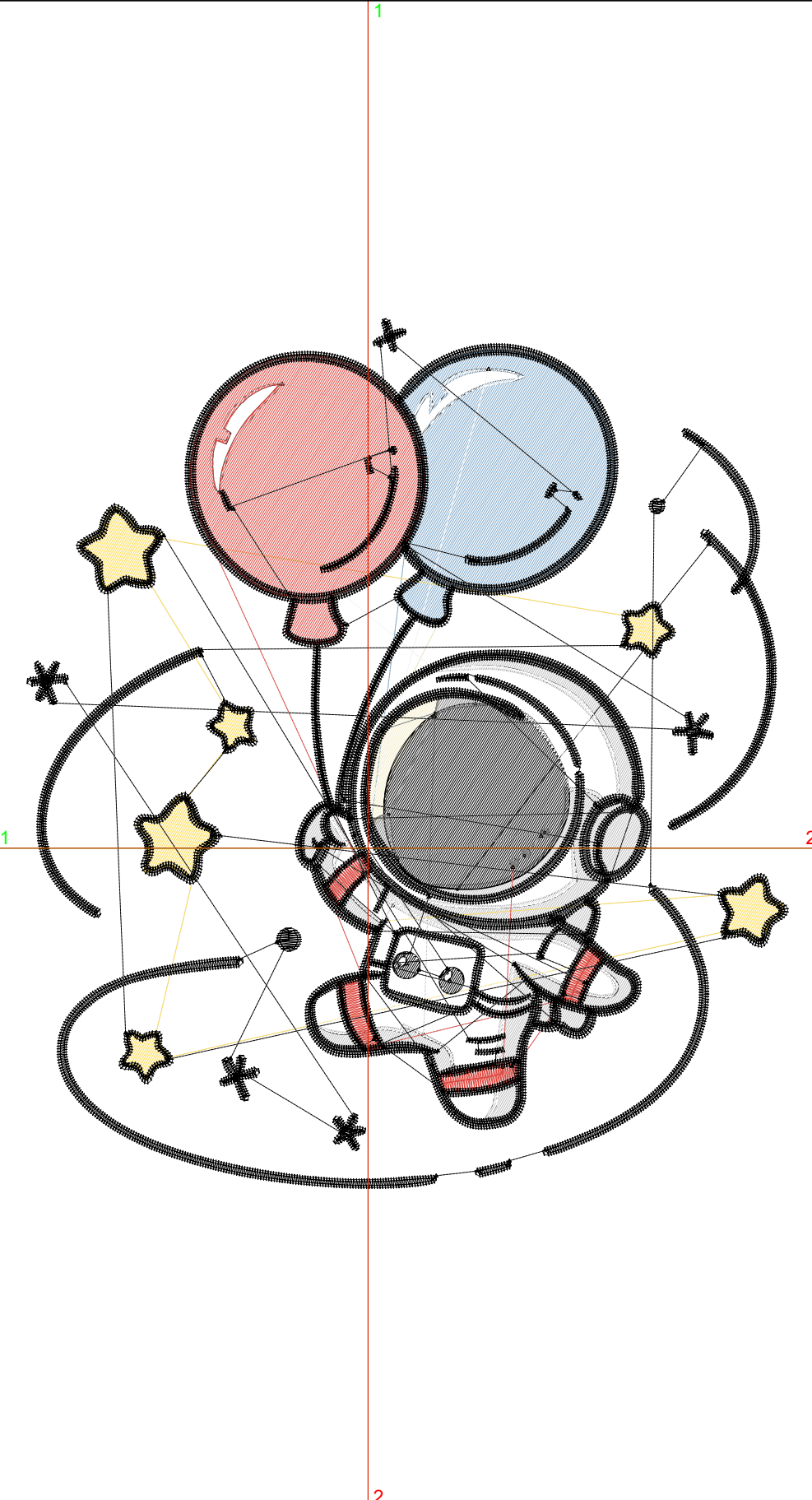
Title:

Stitches: 20,835  
 Height: 5.51 in  
 Width: 4.82 in  
 Colors: 8  
 Colorway: Colorway 1  
 Zoom: 1:1

Machine format: Tajima  
 Color changes: 8  
 Stops: 9  
 Trims: 81  
 Appliqués: 0  
 Left: 54.8 mm  
 Right: 67.6 mm  
 Up: 85.2 mm  
 Down: 54.7 mm  
 EndX: 0.00 in  
 EndY: 0.00 in  
 Area: 26.55 in<sup>2</sup>  
 Max stitch: 11.8 mm  
 Min stitch: 0.0 mm  
 Max jump: 7.0 mm  
 Total thread: 311.50ft  
 Total bobbin: 101.83ft

Stop Sequence:

#	N#	Color	St.	Code	Name	Chart
1.	4		1,252	R130	G171 B204	
2.	3		138	R245	G238 B201	
3.	14		2,070	14	Brown	Default
4.	12		829	12	Orange	Default
5.	8		809	8	Black	Default
6.	9		2,338	9	White	Default
7.	15		214	15	Pink	Default
8.	2		1,720	R222	G74 B66	
9.	8		11,463	8	Black	Default



# Production Worksheet

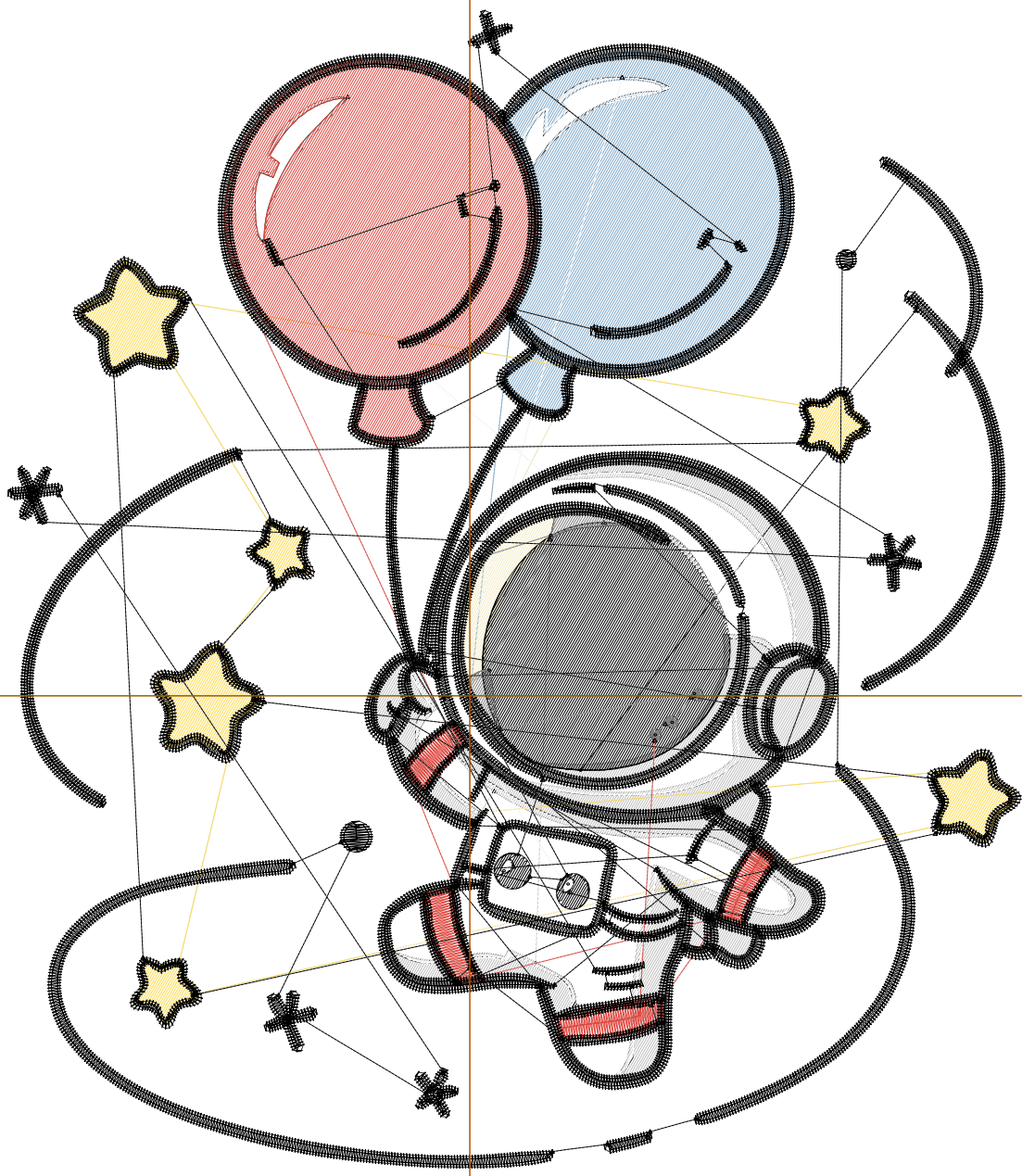
Wilcom EmbroideryStudio - Designing



Design: **6**

Title:

Stitches: 25,547  
Height: 6.51 in  
Width: 5.70 in  
Colors: 8  
Colorway: Colorway 1  
Zoom: 1:1



# Production Worksheet

Wilcom EmbroideryStudio - Designing



Design: **6**

Title:

Stitches: 25,547  
 Height: 6.51 in  
 Width: 5.70 in  
 Colors: 8  
 Colorway: Colorway 1  
 Zoom: 1:1

Machine format: Tajima  
 Color changes: 8  
 Stops: 9  
 Trims: 82  
 Appliqués: 0  
 Left: 65.9 mm  
 Right: 78.8 mm  
 Up: 97.9 mm  
 Down: 67.4 mm  
 EndX: 0.00 in  
 EndY: 0.00 in  
 Area 37.08 in<sup>2</sup>  
 Max stitch: 10.1 mm  
 Min stitch: 0.0 mm  
 Max jump: 7.0 mm  
 Total thread: 402.43ft  
 Total bobbin: 137.39ft

Stop Sequence:

#	N#	Color	St.	Code	Name	Chart
1.	4		1,685		R130 G171 B204	
2.	3		177		R245 G238 B201	
3.	14		2,639	14	Brown	Default
4.	12		1,044	12	Orange	Default
5.	8		1,096	8	Black	Default
6.	9		3,006	9	White	Default
7.	15		260	15	Pink	Default
8.	2		2,209		R222 G74 B66	
9.	8		13,429	8	Black	Default

# Production Worksheet

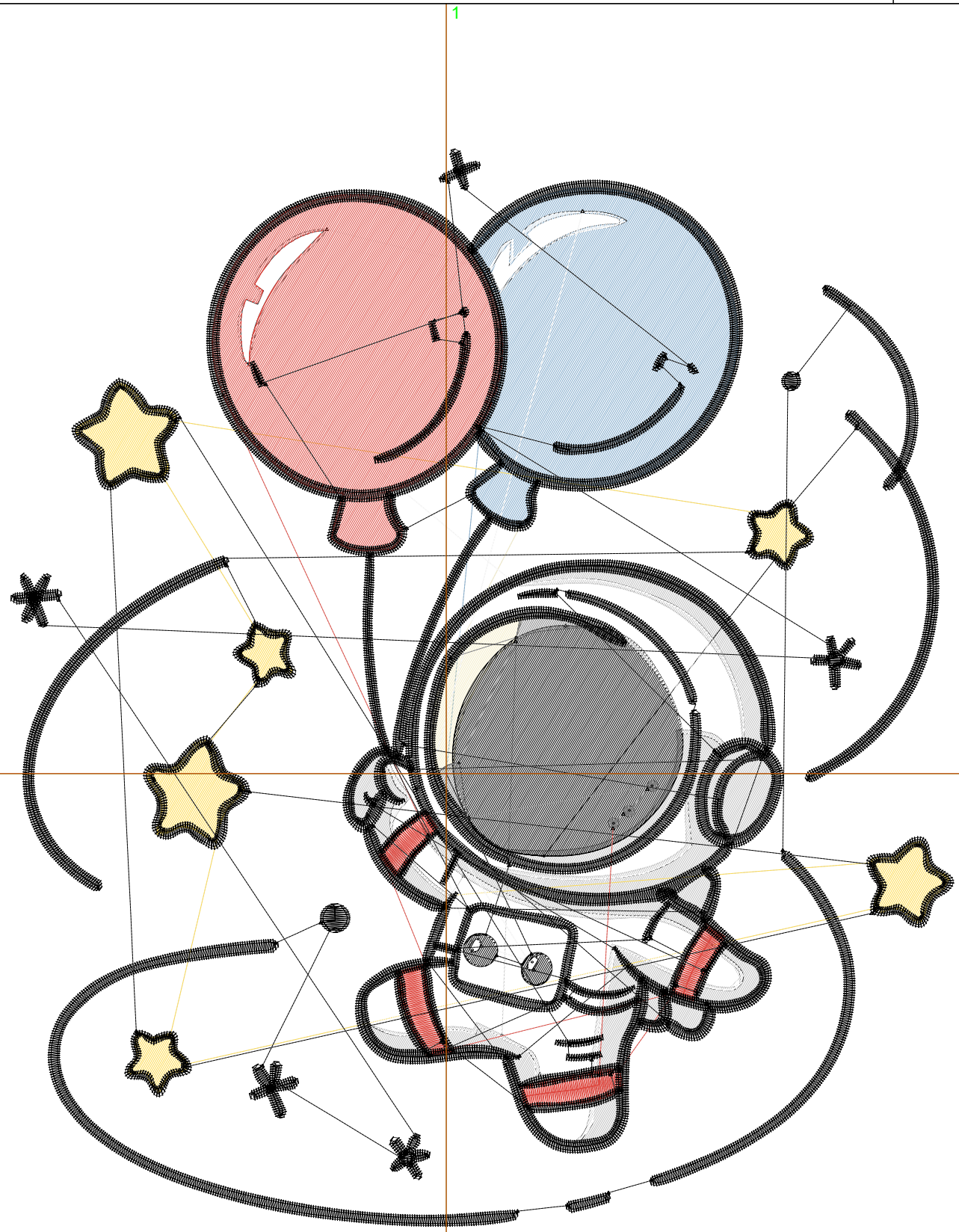
Wilcom EmbroideryStudio - Designing



Design: 7

Title:

Stitches: 30,549  
Height: 7.51 in  
Width: 6.57 in  
Colors: 8  
Colorway: Colorway 1  
Zoom: 1:1



# Production Worksheet

Wilcom EmbroideryStudio - Designing



Design: **7**

Title:

Stitches: 30,549  
 Height: 7.51 in  
 Width: 6.57 in  
 Colors: 8  
 Colorway: Colorway 1  
 Zoom: 1:1

Machine format: Tajima  
 Color changes: 8  
 Stops: 9  
 Trims: 84  
 Appliqués: 0  
 Left: 77.1 mm  
 Right: 89.9 mm  
 Up: 110.6 mm  
 Down: 80.1 mm  
 EndX: 0.00 in  
 EndY: 0.00 in  
 Area 49.35 in<sup>2</sup>  
 Max stitch: 11.7 mm  
 Min stitch: 0.0 mm  
 Max jump: 7.0 mm  
 Total thread: 504.61ft  
 Total bobbin: 178.49ft

Stop Sequence:

#	N#	Color	St.	Code	Name	Chart
1.	4		2,161		R130 G171 B204	
2.	3		222		R245 G238 B201	
3.	14		3,192	14	Brown	Default
4.	12		1,263	12	Orange	Default
5.	8		1,405	8	Black	Default
6.	9		3,714	9	White	Default
7.	15		302	15	Pink	Default
8.	2		2,848		R222 G74 B66	
9.	8		15,440	8	Black	Default