

# Production Worksheet

Wilcom EmbroideryStudio - Designing



Design: **3**

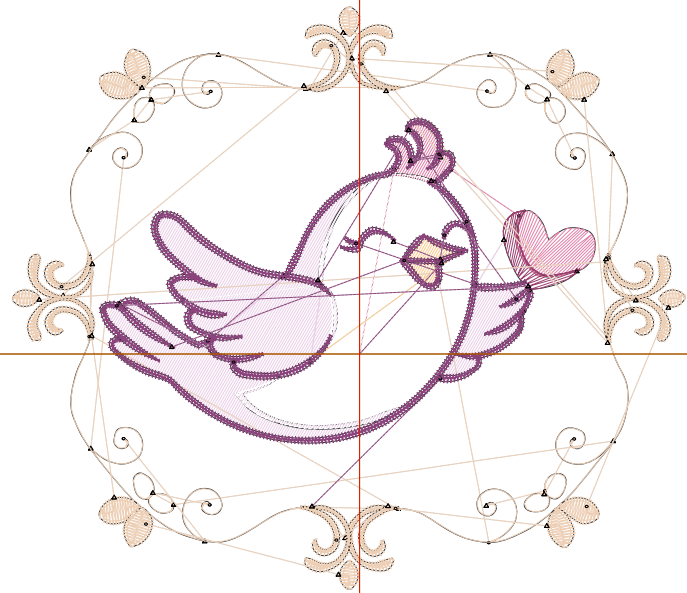
Title:

Stitches: 7,683  
 Height: 3.03 in  
 Width: 3.50 in  
 Colors: 7  
 Colorway: Colorway 1  
 Zoom: 1:1

Machine format: Tajima  
 Color changes: 6  
 Stops: 7  
 Trims: 63  
 Appliqués: 0  
 Left: 45.9 mm  
 Right: 43.0 mm  
 Up: 45.9 mm  
 Down: 31.1 mm  
 EndX: 0.00 in  
 EndY: 0.00 in  
 Area: 10.60 in<sup>2</sup>  
 Max stitch: 7.0 mm  
 Min stitch: 0.0 mm  
 Max jump: 7.0 mm  
 Total thread: 100.95ft  
 Total bobbin: 28.59ft

Stop Sequence:

#	N#	Color	St.	Code	Name	Chart
1.	5		261		R227 G128 B169	
2.	6		100		R156 G64 B111	
3.	3		1,173		R235 G207 B232	
4.	9		740	9	White	Default
5.	4		81		R252 G203 B139	
6.	7		2,914		R237 G207 B182	
7.	2		2,412		R140 G66 B124	



# Production Worksheet

Wilcom EmbroideryStudio - Designing



Design: **4**

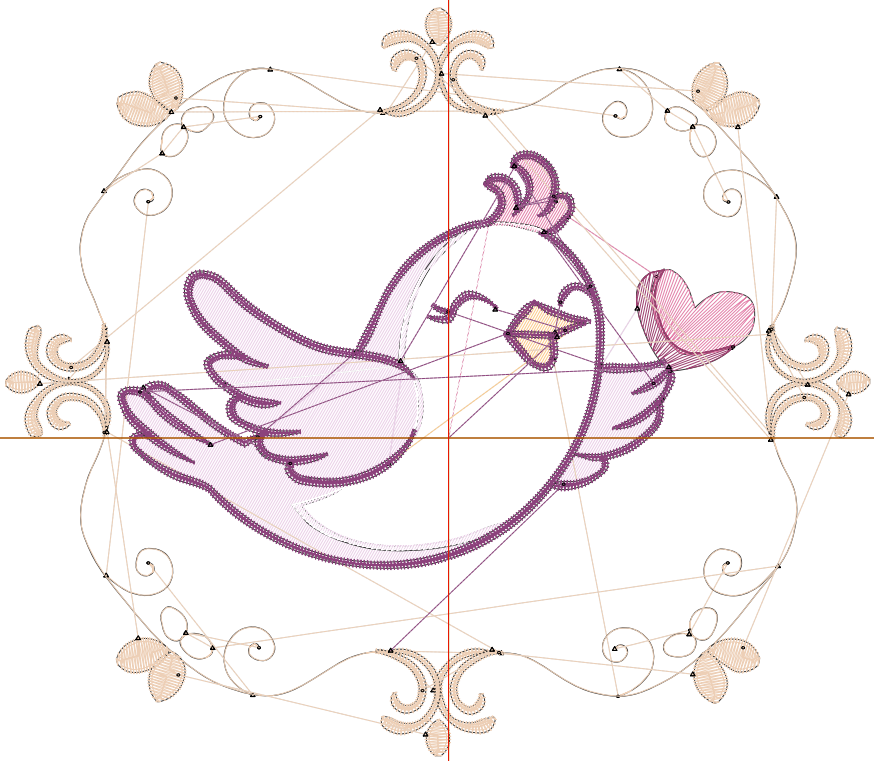
Title:

Stitches: 9,980  
 Height: 3.90 in  
 Width: 4.50 in  
 Colors: 7  
 Colorway: Colorway 1  
 Zoom: 1:1

Machine format: Tajima  
 Color changes: 6  
 Stops: 7  
 Trims: 63  
 Appliqués: 0  
 Left: 58.6 mm  
 Right: 55.7 mm  
 Up: 56.9 mm  
 Down: 42.1 mm  
 EndX: 0.00 in  
 EndY: 0.00 in  
 Area: 17.53 in<sup>2</sup>  
 Max stitch: 7.9 mm  
 Min stitch: 0.0 mm  
 Max jump: 7.0 mm  
 Total thread: 140.97ft  
 Total bobbin: 43.37ft

Stop Sequence:

#	N#	Color	St.	Code	Name	Chart
1.	5		359	R227	G128 B169	
2.	6		136	R156	G64 B111	
3.	3		1,704	R235	G207 B232	
4.	9		1,133	9	White	Default
5.	4		109	R252	G203 B139	
6.	7		3,543	R237	G207 B182	
7.	2		2,994	R140	G66 B124	



# Production Worksheet

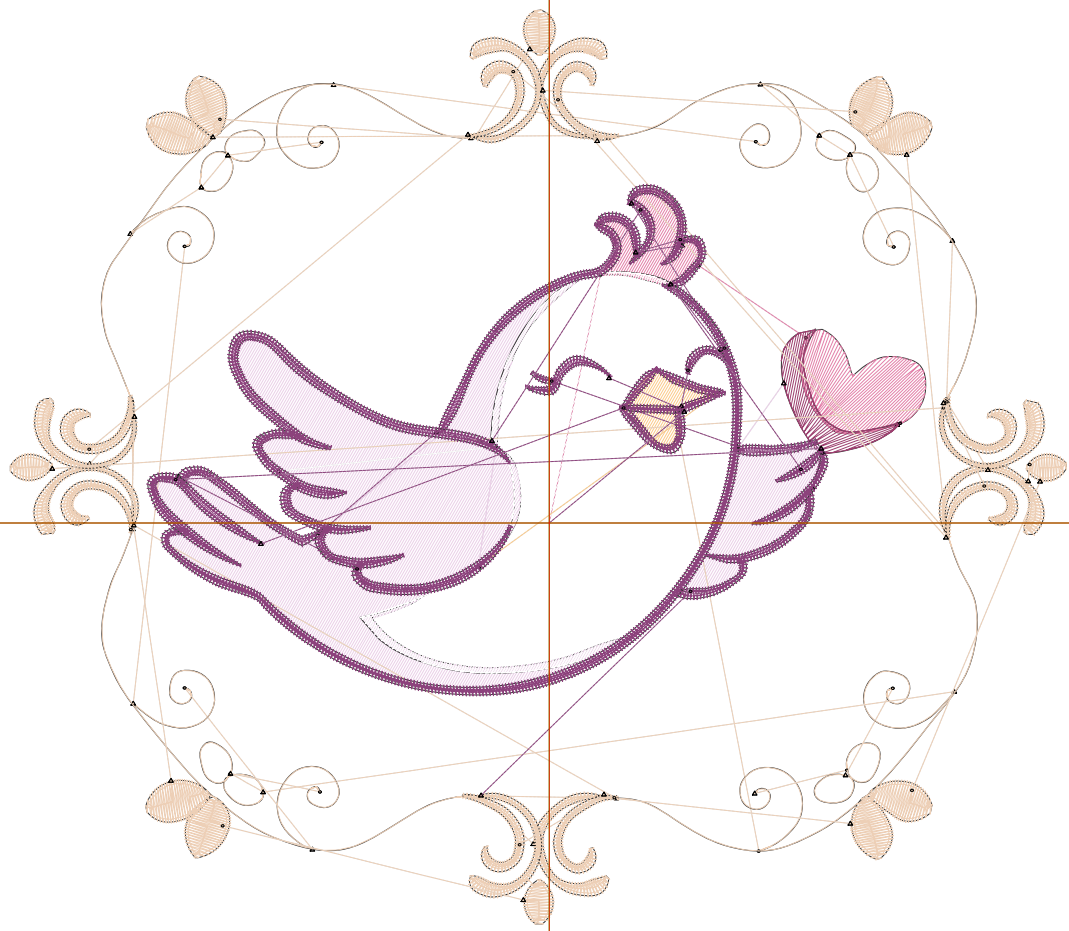
Wilcom EmbroideryStudio - Designing



Design: **5**

Title:

Stitches: 12,404  
Height: 4.76 in  
Width: 5.50 in  
Colors: 7  
Colorway: Colorway 1  
Zoom: 1:1



# Production Worksheet

Wilcom EmbroideryStudio - Designing



Design: **5**

Title:

Stitches: 12,404  
 Height: 4.76 in  
 Width: 5.50 in  
 Colors: 7  
 Colorway: Colorway 1  
 Zoom: 1:1

Machine format: Tajima  
 Color changes: 6  
 Stops: 7  
 Trims: 64  
 Appliqués: 0  
 Left: 71.3 mm  
 Right: 68.4 mm  
 Up: 67.9 mm  
 Down: 53.1 mm  
 EndX: 0.00 in  
 EndY: 0.00 in  
 Area 26.18 in<sup>2</sup>  
 Max stitch: 8.9 mm  
 Min stitch: 0.0 mm  
 Max jump: 7.0 mm  
 Total thread: 186.73ft  
 Total bobbin: 61.06ft

Stop Sequence:

#	N#	Color	St.	Code	Name	Chart
1.	5		473		R227 G128 B169	
2.	6		154		R156 G64 B111	
3.	3		2,256		R235 G207 B232	
4.	9		1,591	9	White	Default
5.	4		146		R252 G203 B139	
6.	7		4,177		R237 G207 B182	
7.	2		3,605		R140 G66 B124	

# Production Worksheet

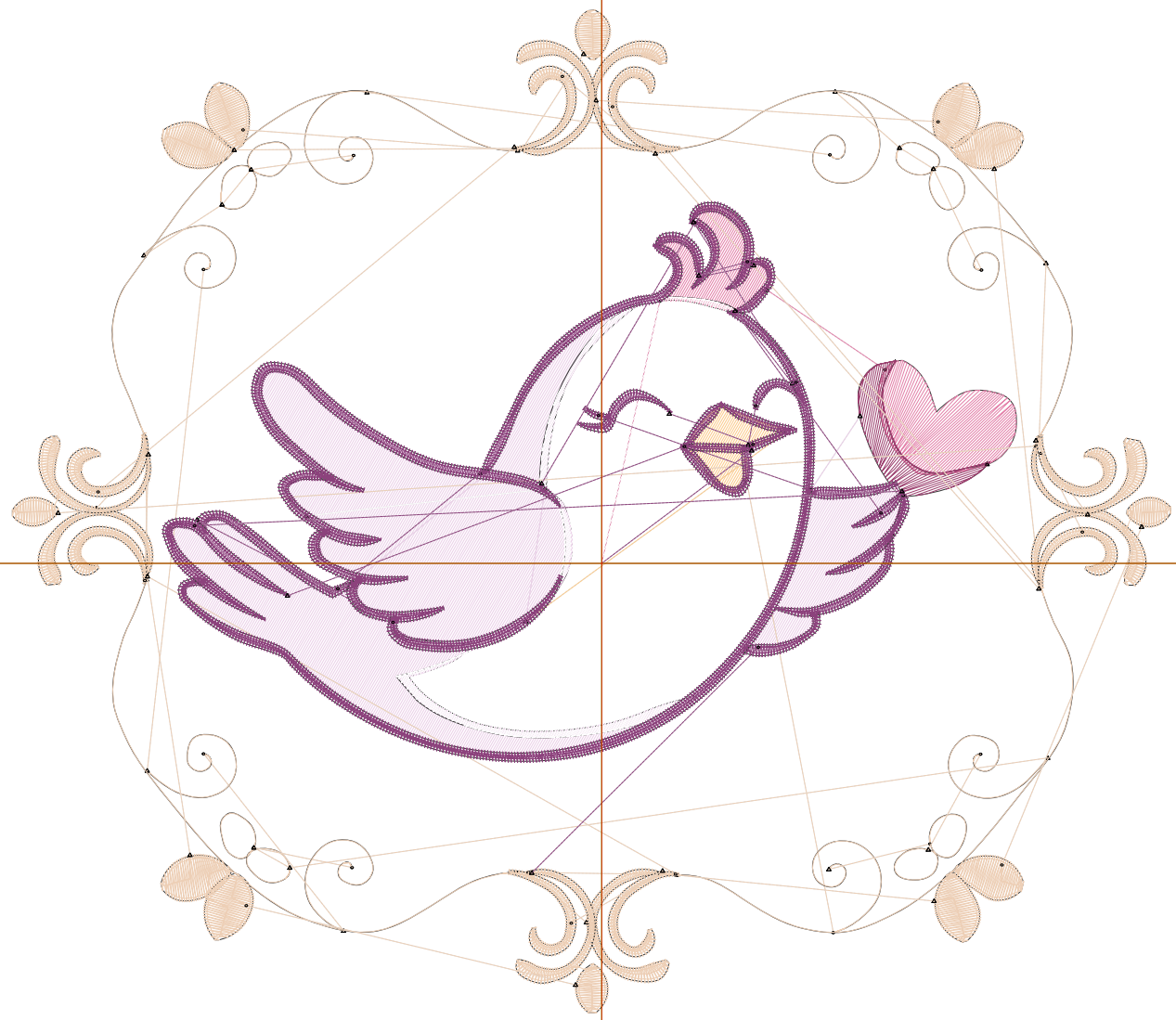
Wilcom EmbroideryStudio - Designing



Design: **6**

Title:

Stitches: 15,078  
Height: 5.63 in  
Width: 6.50 in  
Colors: 7  
Colorway: Colorway 1  
Zoom: 1:1



1

1

2

2

# Production Worksheet

Wilcom EmbroideryStudio - Designing



Design: **6**

Title:

Stitches: 15,078  
 Height: 5.63 in  
 Width: 6.50 in  
 Colors: 7  
 Colorway: Colorway 1  
 Zoom: 1:1

Machine format: Tajima  
 Color changes: 6  
 Stops: 7  
 Trims: 63  
 Appliqués: 0  
 Left: 84.0 mm  
 Right: 81.1 mm  
 Up: 78.8 mm  
 Down: 64.1 mm  
 EndX: 0.00 in  
 EndY: 0.00 in  
 Area 36.57 in<sup>2</sup>  
 Max stitch: 11.0 mm  
 Min stitch: 0.0 mm  
 Max jump: 7.0 mm  
 Total thread: 239.68ft  
 Total bobbin: 82.04ft

Stop Sequence:

#	N#	Color	St.	Code	Name	Chart
1.	5		601		R227 G128 B169	
2.	6		214		R156 G64 B111	
3.	3		2,900		R235 G207 B232	
4.	9		2,148	9	White	Default
5.	4		181		R252 G203 B139	
6.	7		4,781		R237 G207 B182	
7.	2		4,251		R140 G66 B124	

# Production Worksheet

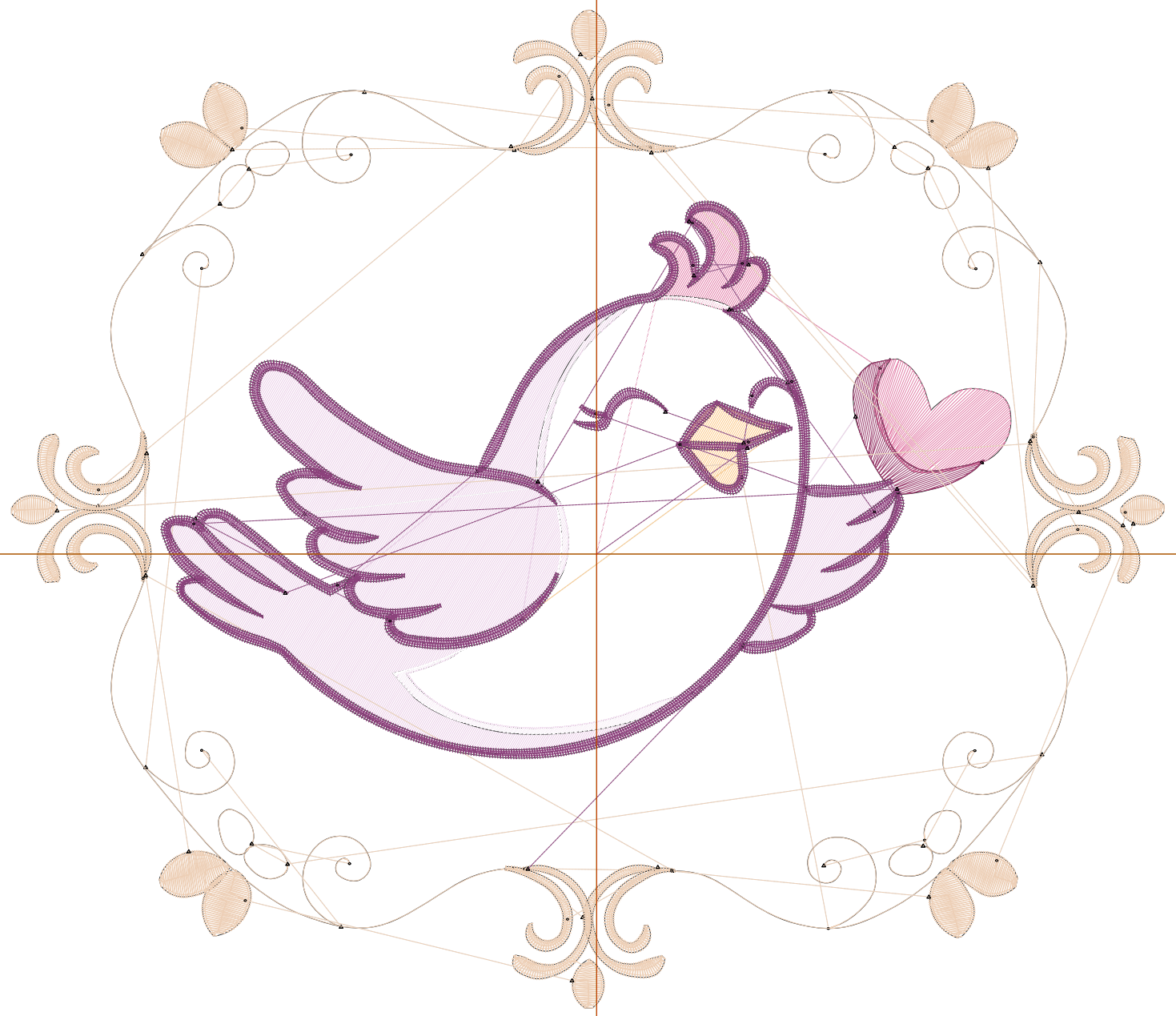
Wilcom EmbroideryStudio - Designing



Design: **7**

Title:

Stitches: 18,132  
Height: 6.49 in  
Width: 7.50 in  
Colors: 7  
Colorway: Colorway 1  
Zoom: 1:1



# Production Worksheet

Wilcom EmbroideryStudio - Designing



Design: **7**

Title:

Stitches: 18,132  
 Height: 6.49 in  
 Width: 7.50 in  
 Colors: 7  
 Colorway: Colorway 1  
 Zoom: 1:1

Machine format: Tajima  
 Color changes: 6  
 Stops: 7  
 Trims: 64  
 Appliqués: 0  
 Left: 96.7 mm  
 Right: 93.8 mm  
 Up: 89.8 mm  
 Down: 75.0 mm  
 EndX: 0.00 in  
 EndY: 0.00 in  
 Area 48.69 in<sup>2</sup>  
 Max stitch: 7.0 mm  
 Min stitch: 0.0 mm  
 Max jump: 7.0 mm  
 Total thread: 300.36ft  
 Total bobbin: 106.12ft

Stop Sequence:

#	N#	Color	St.	Code	Name	Chart
1.	5		744		R227 G128 B169	
2.	6		240		R156 G64 B111	
3.	3		3,630		R235 G207 B232	
4.	9		2,812	9	White	Default
5.	4		217		R252 G203 B139	
6.	7		5,605		R237 G207 B182	
7.	2		4,882		R140 G66 B124	