

# Production Worksheet

Wilcom EmbroideryStudio - Designing



Design: **3**

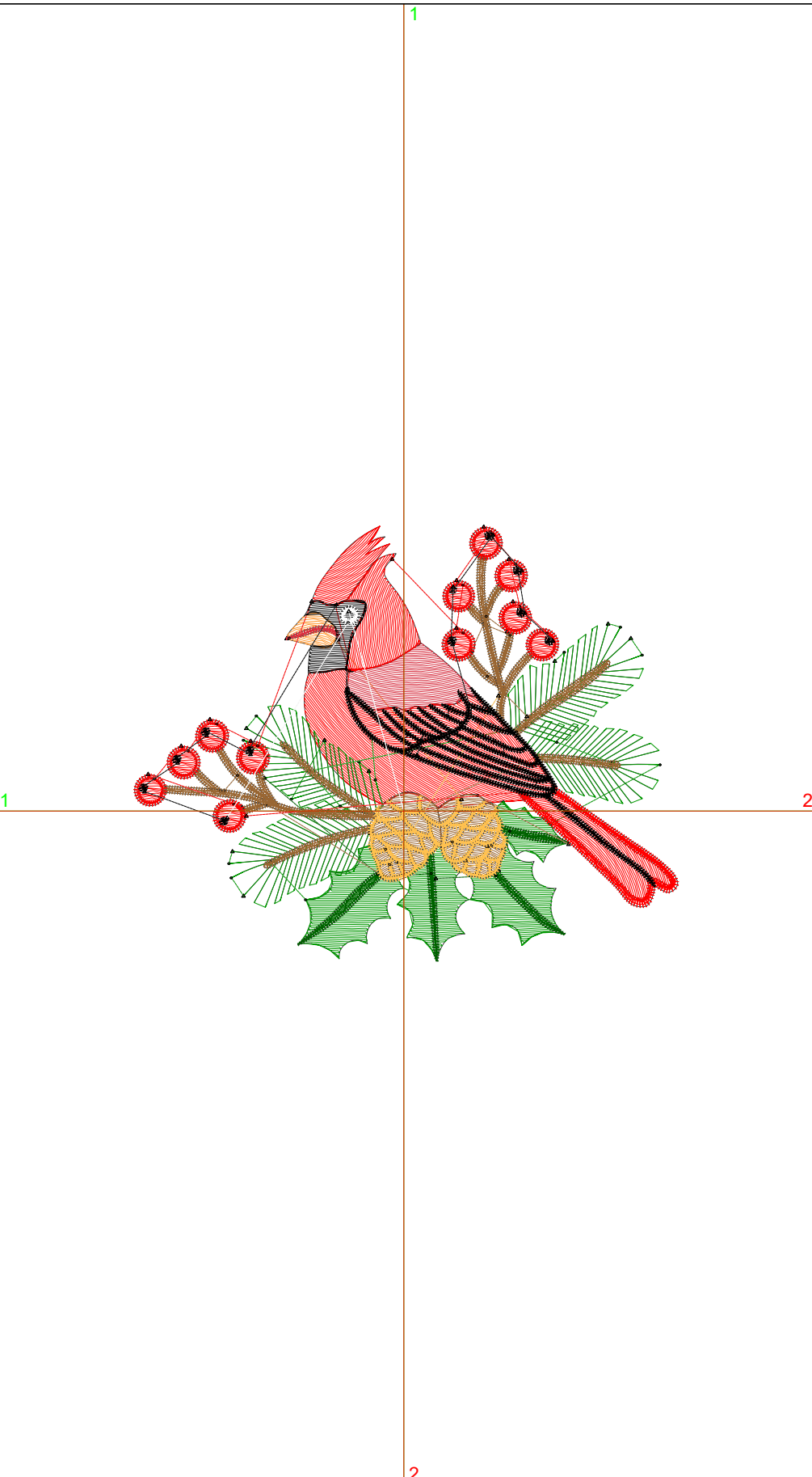
Title:

Stitches: 12,063  
 Height: 2.80 in  
 Width: 3.51 in  
 Colors: 9  
 Colorway: Colorway 1  
 Zoom: 1:1

Machine format: Tajima  
 Color changes: 9  
 Stops: 10  
 Trims: 68  
 Appliqués: 0  
 Left: 44.2 mm  
 Right: 45.0 mm  
 Up: 46.6 mm  
 Down: 24.5 mm  
 EndX: 0.00 in  
 EndY: 0.00 in  
 Area 9.84 in<sup>2</sup>  
 Max stitch: 10.6 mm  
 Min stitch: 0.0 mm  
 Max jump: 6.9 mm  
 Total thread: 157.79ft  
 Total bobbin: 44.65ft

Stop Sequence:

| #   | N# | Color  | St.   | Code | Name       | Chart   |
|-----|----|--|-------|------|------------|---------|
| 1.  | 3  | <span style="display:inline-block; width:15px; height:15px; background-color:red;"></span>         | 568   | 3    | Red        | Default |
| 2.  | 1  | <span style="display:inline-block; width:15px; height:15px; background-color:darkgreen;"></span>   | 1,673 | 1    | Dark Green | Default |
| 3.  | 4  | <span style="display:inline-block; width:15px; height:15px; background-color:forestgreen;"></span> | 460   | R0   | G97 B0     |         |
| 4.  | 14 | <span style="display:inline-block; width:15px; height:15px; background-color:brown;"></span>       | 1,953 | 14   | Brown      | Default |
| 5.  | 2  | <span style="display:inline-block; width:15px; height:15px; background-color:orange;"></span>      | 1,733 | R255 | G193 B79   |         |
| 6.  | 12 | <span style="display:inline-block; width:15px; height:15px; background-color:orange;"></span>      | 92    | 12   | Orange     | Default |
| 7.  | 6  | <span style="display:inline-block; width:15px; height:15px; background-color:firebrick;"></span>   | 345   | R214 | G46 B63    |         |
| 8.  | 3  | <span style="display:inline-block; width:15px; height:15px; background-color:red;"></span>         | 2,812 | 3    | Red        | Default |
| 9.  | 8  | <span style="display:inline-block; width:15px; height:15px; background-color:black;"></span>       | 2,336 | 8    | Black      | Default |
| 10. | 9  | <span style="display:inline-block; width:15px; height:15px; background-color:white;"></span>       | 89    | 9    | White      | Default |



# Production Worksheet

Wilcom EmbroideryStudio - Designing



Design: **4**

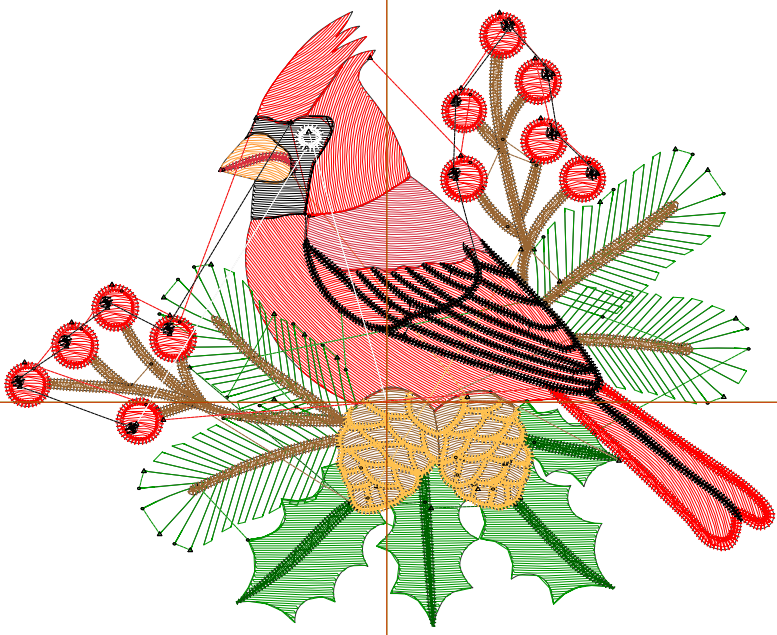
Title:

Stitches: 13,957  
 Height: 3.20 in  
 Width: 4.01 in  
 Colors: 9  
 Colorway: Colorway 1  
 Zoom: 1:1

Machine format: Tajima  
 Color changes: 9  
 Stops: 10  
 Trims: 79  
 Appliqués: 0  
 Left: 50.6 mm  
 Right: 51.3 mm  
 Up: 51.6 mm  
 Down: 29.6 mm  
 EndX: 0.00 in  
 EndY: 0.00 in  
 Area: 12.83 in<sup>2</sup>  
 Max stitch: 12.1 mm  
 Min stitch: 0.0 mm  
 Max jump: 6.8 mm  
 Total thread: 188.08ft  
 Total bobbin: 55.24ft

Stop Sequence:

| #   | N# | Color | St.   | Code | Name          | Chart   |
|-----|----|-------|-------|------|---------------|---------|
| 1.  | 3  |       | 714   | 3    | Red           | Default |
| 2.  | 1  |       | 1,989 | 1    | Dark Green    | Default |
| 3.  | 4  |       | 520   |      | R0 G97 B0     |         |
| 4.  | 14 |       | 2,259 | 14   | Brown         | Default |
| 5.  | 2  |       | 1,934 |      | R255 G193 B79 |         |
| 6.  | 12 |       | 114   | 12   | Orange        | Default |
| 7.  | 6  |       | 416   |      | R214 G46 B63  |         |
| 8.  | 3  |       | 3,277 | 3    | Red           | Default |
| 9.  | 8  |       | 2,634 | 8    | Black         | Default |
| 10. | 9  |       | 98    | 9    | White         | Default |



# Production Worksheet

Wilcom EmbroideryStudio - Designing



Design: **4**

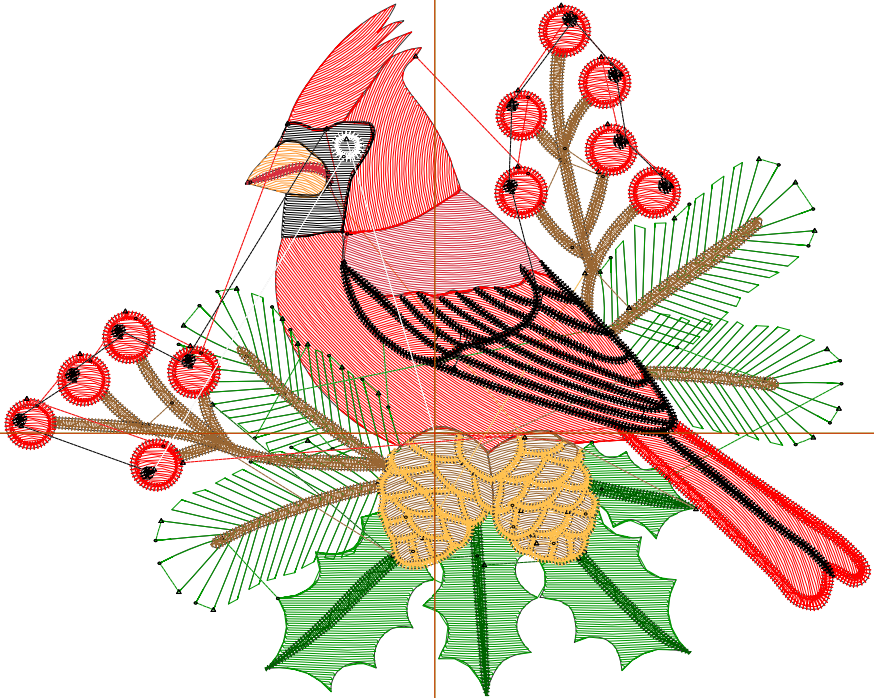
Title:

Stitches: 16,021  
 Height: 3.60 in  
 Width: 4.51 in  
 Colors: 9  
 Colorway: Colorway 1  
 Zoom: 1:1

Machine format: Tajima  
 Color changes: 9  
 Stops: 10  
 Trims: 85  
 Appliqués: 0  
 Left: 56.9 mm  
 Right: 57.7 mm  
 Up: 56.7 mm  
 Down: 34.7 mm  
 EndX: 0.00 in  
 EndY: 0.00 in  
 Area 16.23 in<sup>2</sup>  
 Max stitch: 8.8 mm  
 Min stitch: 0.0 mm  
 Max jump: 7.0 mm  
 Total thread: 221.64ft  
 Total bobbin: 67.10ft

Stop Sequence:

| #   | N# | Color | St.   | Code | Name          | Chart   |
|-----|----|-------|-------|------|---------------|---------|
| 1.  | 3  |       | 873   | 3    | Red           | Default |
| 2.  | 1  |       | 2,296 | 1    | Dark Green    | Default |
| 3.  | 4  |       | 580   |      | R0 G97 B0     |         |
| 4.  | 14 |       | 2,598 | 14   | Brown         | Default |
| 5.  | 2  |       | 2,170 |      | R255 G193 B79 |         |
| 6.  | 12 |       | 136   | 12   | Orange        | Default |
| 7.  | 6  |       | 488   |      | R214 G46 B63  |         |
| 8.  | 3  |       | 3,860 | 3    | Red           | Default |
| 9.  | 8  |       | 2,910 | 8    | Black         | Default |
| 10. | 9  |       | 108   | 9    | White         | Default |



# Production Worksheet

Wilcom EmbroideryStudio - Designing



Design: **5**

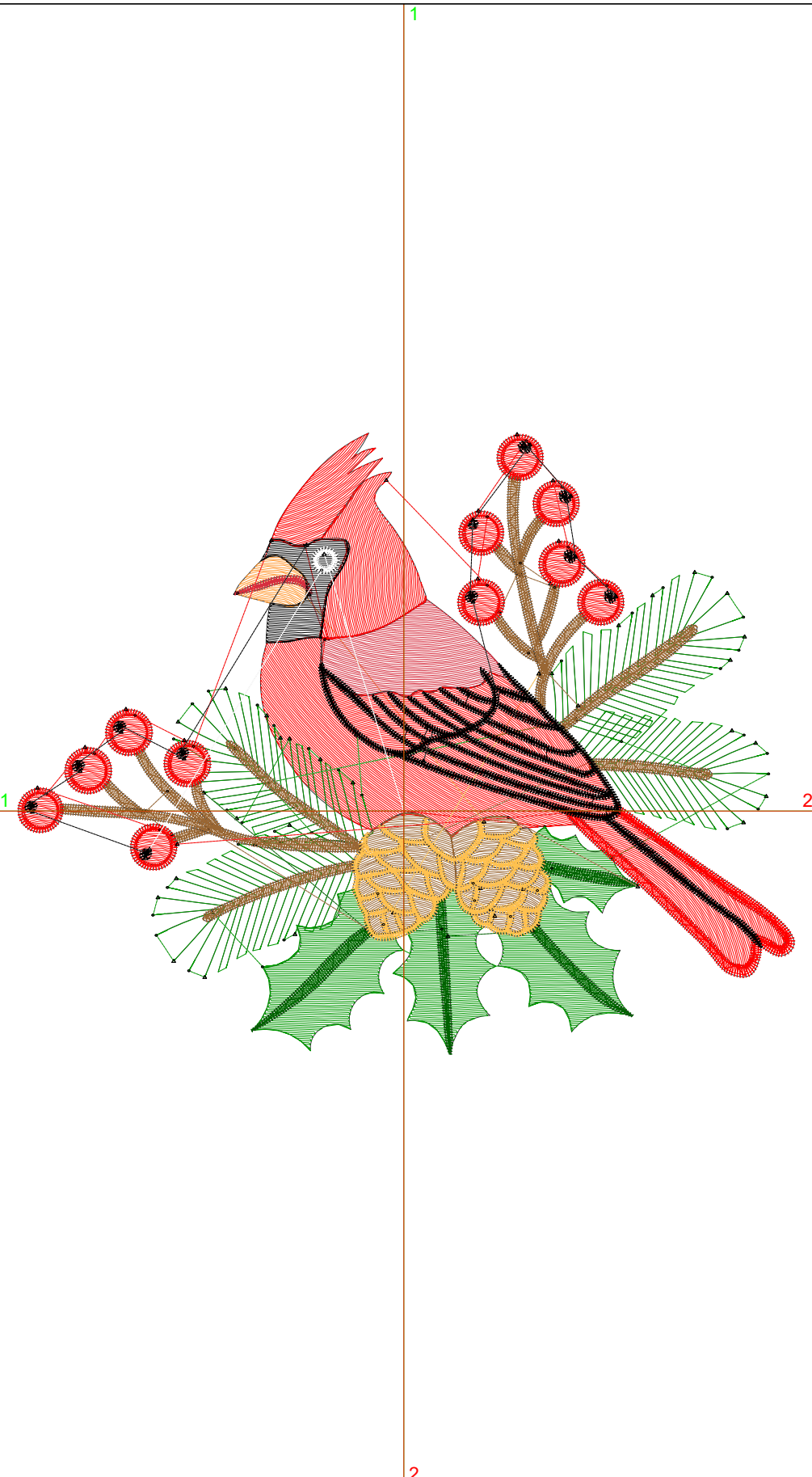
Title:

Stitches: 18,057  
 Height: 4.00 in  
 Width: 5.01 in  
 Colors: 9  
 Colorway: Colorway 1  
 Zoom: 1:1

Machine format: Tajima  
 Color changes: 9  
 Stops: 10  
 Trims: 91  
 Appliqués: 0  
 Left: 63.3 mm  
 Right: 64.0 mm  
 Up: 61.8 mm  
 Down: 39.8 mm  
 EndX: 0.00 in  
 EndY: 0.00 in  
 Area: 20.04 in<sup>2</sup>  
 Max stitch: 9.8 mm  
 Min stitch: 0.0 mm  
 Max jump: 6.8 mm  
 Total thread: 256.12ft  
 Total bobbin: 79.62ft

Stop Sequence:

| #   | N# | Color                                    | St.   | Code | Name          | Chart   |
|-----|----|--|-------|------|---------------|---------|
| 1.  | 3  | <span style="color: red;">█</span>       | 1,043 | 3    | Red           | Default |
| 2.  | 1  | <span style="color: green;">█</span>     | 2,601 | 1    | Dark Green    | Default |
| 3.  | 4  | <span style="color: darkgreen;">█</span> | 646   |      | R0 G97 B0     |         |
| 4.  | 14 | <span style="color: brown;">█</span>     | 2,937 | 14   | Brown         | Default |
| 5.  | 2  | <span style="color: orange;">█</span>    | 2,399 |      | R255 G193 B79 |         |
| 6.  | 12 | <span style="color: orange;">█</span>    | 153   | 12   | Orange        | Default |
| 7.  | 6  | <span style="color: red;">█</span>       | 561   |      | R214 G46 B63  |         |
| 8.  | 3  | <span style="color: red;">█</span>       | 4,397 | 3    | Red           | Default |
| 9.  | 8  | <span style="color: black;">█</span>     | 3,201 | 8    | Black         | Default |
| 10. | 9  | <span style="color: white;">█</span>     | 117   | 9    | White         | Default |



# Production Worksheet

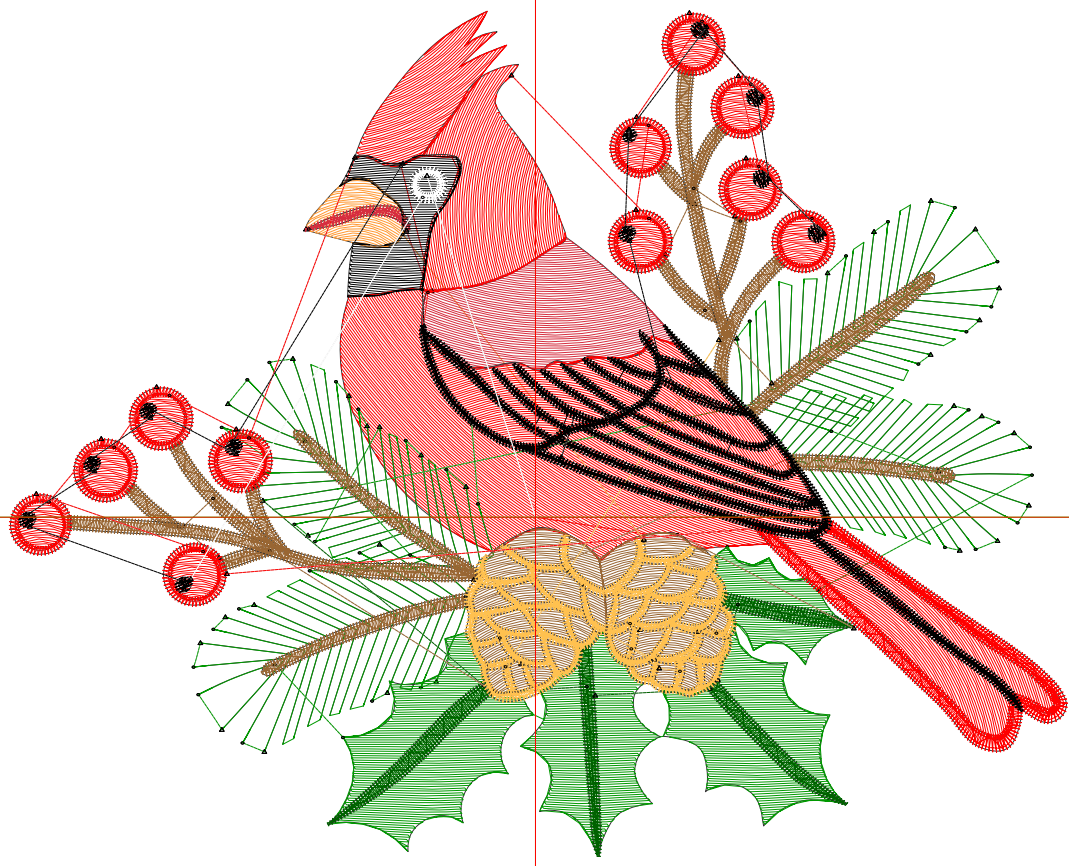
Wilcom EmbroideryStudio - Designing



Design: **5**

Title:

Stitches: 20,269  
Height: 4.40 in  
Width: 5.51 in  
Colors: 9  
Colorway: Colorway 1  
Zoom: 1:1



# Production Worksheet

Wilcom EmbroideryStudio - Designing



Design: **5**

Title:

Stitches: 20,269  
 Height: 4.40 in  
 Width: 5.51 in  
 Colors: 9  
 Colorway: Colorway 1  
 Zoom: 1:1

Machine format: Tajima  
 Color changes: 9  
 Stops: 10  
 Trims: 98  
 Appliqués: 0  
 Left: 69.6 mm  
 Right: 70.4 mm  
 Up: 66.9 mm  
 Down: 44.9 mm  
 EndX: 0.00 in  
 EndY: 0.00 in  
 Area 24.27 in<sup>2</sup>  
 Max stitch: 10.8 mm  
 Min stitch: 0.0 mm  
 Max jump: 6.9 mm  
 Total thread: 294.68ft  
 Total bobbin: 93.87ft

Stop Sequence:

| #   | N# | Color | St.   | Code | Name          | Chart   |
|-----|----|-------|-------|------|---------------|---------|
| 1.  | 3  |       | 1,212 | 3    | Red           | Default |
| 2.  | 1  |       | 2,930 | 1    | Dark Green    | Default |
| 3.  | 4  |       | 708   |      | R0 G97 B0     |         |
| 4.  | 14 |       | 3,287 | 14   | Brown         | Default |
| 5.  | 2  |       | 2,589 |      | R255 G193 B79 |         |
| 6.  | 12 |       | 185   | 12   | Orange        | Default |
| 7.  | 6  |       | 649   |      | R214 G46 B63  |         |
| 8.  | 3  |       | 5,011 | 3    | Red           | Default |
| 9.  | 8  |       | 3,564 | 8    | Black         | Default |
| 10. | 9  |       | 132   | 9    | White         | Default |

# Production Worksheet

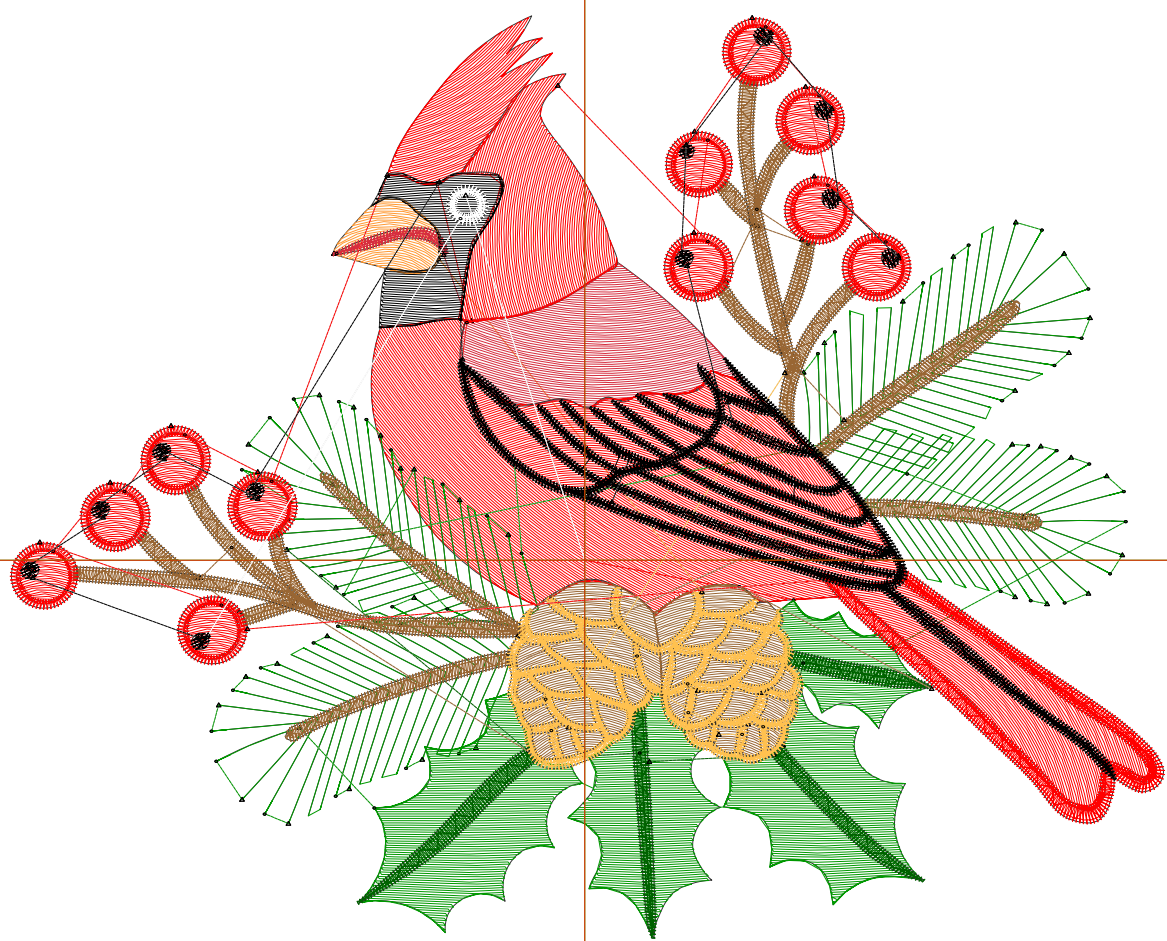
Wilcom EmbroideryStudio - Designing



Design: **6**

Title:

Stitches: 22,588  
Height: 4.79 in  
Width: 6.01 in  
Colors: 9  
Colorway: Colorway 1  
Zoom: 1:1



# Production Worksheet

Wilcom EmbroideryStudio - Designing



Design: **6**

Title:

Stitches: 22,588  
 Height: 4.79 in  
 Width: 6.01 in  
 Colors: 9  
 Colorway: Colorway 1  
 Zoom: 1:1

Machine format: Tajima  
 Color changes: 9  
 Stops: 10  
 Trims: 105  
 Appliqués: 0  
 Left: 76.0 mm  
 Right: 76.7 mm  
 Up: 71.8 mm  
 Down: 50.0 mm  
 EndX: 0.00 in  
 EndY: 0.00 in  
 Area 28.83 in<sup>2</sup>  
 Max stitch: 11.8 mm  
 Min stitch: 0.0 mm  
 Max jump: 6.9 mm  
 Total thread: 335.38ft  
 Total bobbin: 108.97ft

Stop Sequence:

| #   | N# | Color | St.   | Code | Name          | Chart   |
|-----|----|-------|-------|------|---------------|---------|
| 1.  | 3  |       | 1,422 | 3    | Red           | Default |
| 2.  | 1  |       | 3,306 | 1    | Dark Green    | Default |
| 3.  | 4  |       | 771   |      | R0 G97 B0     |         |
| 4.  | 14 |       | 3,661 | 14   | Brown         | Default |
| 5.  | 2  |       | 2,796 |      | R255 G193 B79 |         |
| 6.  | 12 |       | 208   | 12   | Orange        | Default |
| 7.  | 6  |       | 745   |      | R214 G46 B63  |         |
| 8.  | 3  |       | 5,671 | 3    | Red           | Default |
| 9.  | 8  |       | 3,866 | 8    | Black         | Default |
| 10. | 9  |       | 140   | 9    | White         | Default |

# Production Worksheet

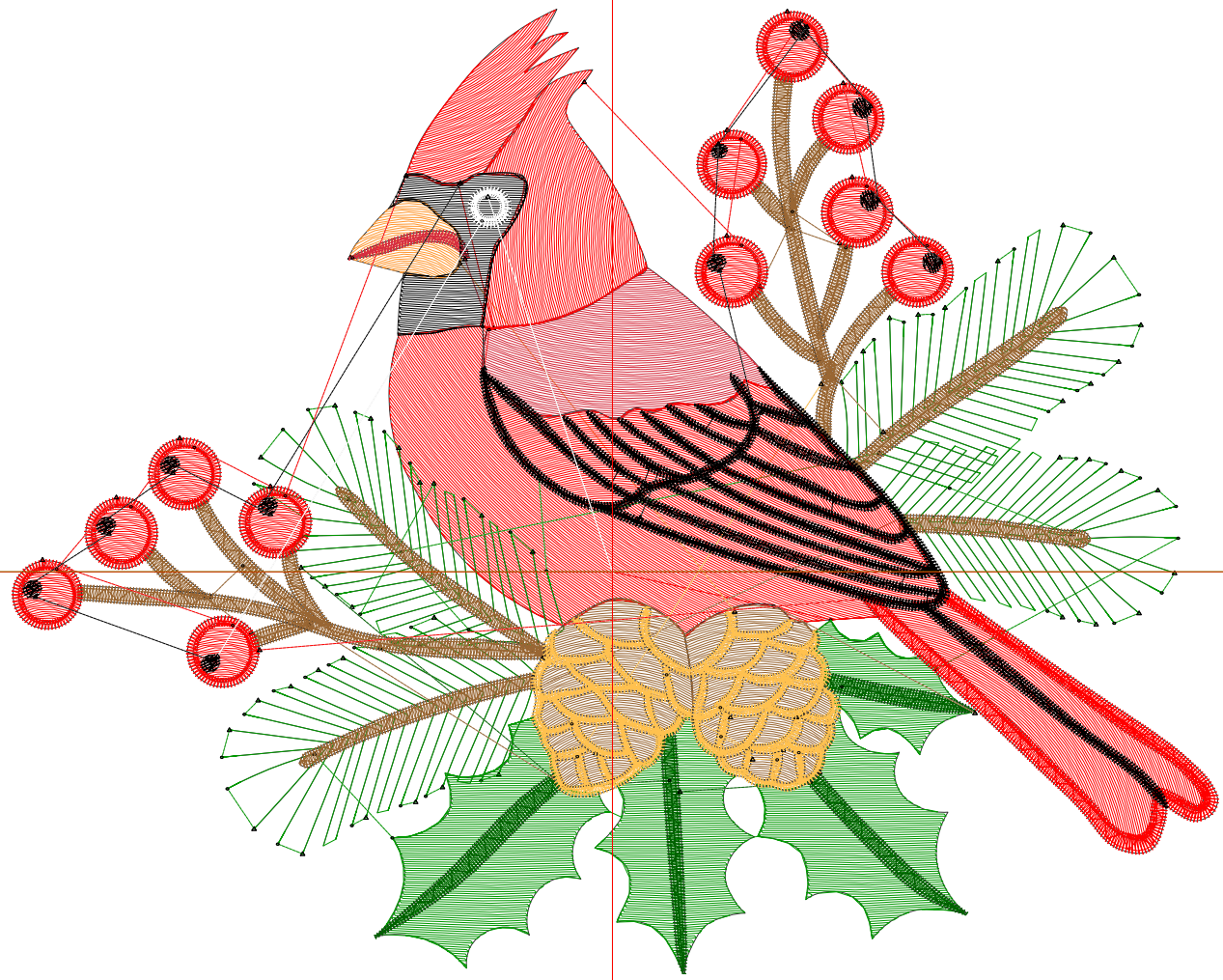
Wilcom EmbroideryStudio - Designing



Design: **6**

Title:

Stitches: 24,889  
Height: 5.20 in  
Width: 6.51 in  
Colors: 9  
Colorway: Colorway 1  
Zoom: 1:1



# Production Worksheet

Wilcom EmbroideryStudio - Designing



Design: **6**

Title:

Stitches: 24,889  
 Height: 5.20 in  
 Width: 6.51 in  
 Colors: 9  
 Colorway: Colorway 1  
 Zoom: 1:1

Machine format: Tajima  
 Color changes: 9  
 Stops: 10  
 Trims: 111  
 Appliqués: 0  
 Left: 82.3 mm  
 Right: 83.1 mm  
 Up: 77.0 mm  
 Down: 55.0 mm  
 EndX: 0.00 in  
 EndY: 0.00 in  
 Area 33.85 in<sup>2</sup>  
 Max stitch: 7.0 mm  
 Min stitch: 0.0 mm  
 Max jump: 7.0 mm  
 Total thread: 377.78ft  
 Total bobbin: 125.15ft

Stop Sequence:

| #   | N# | Color | St.   | Code | Name          | Chart   |
|-----|----|-------|-------|------|---------------|---------|
| 1.  | 3  |       | 1,654 | 3    | Red           | Default |
| 2.  | 1  |       | 3,652 | 1    | Dark Green    | Default |
| 3.  | 4  |       | 835   |      | R0 G97 B0     |         |
| 4.  | 14 |       | 4,042 | 14   | Brown         | Default |
| 5.  | 2  |       | 2,971 |      | R255 G193 B79 |         |
| 6.  | 12 |       | 235   | 12   | Orange        | Default |
| 7.  | 6  |       | 838   |      | R214 G46 B63  |         |
| 8.  | 3  |       | 6,327 | 3    | Red           | Default |
| 9.  | 8  |       | 4,183 | 8    | Black         | Default |
| 10. | 9  |       | 150   | 9    | White         | Default |

# Production Worksheet

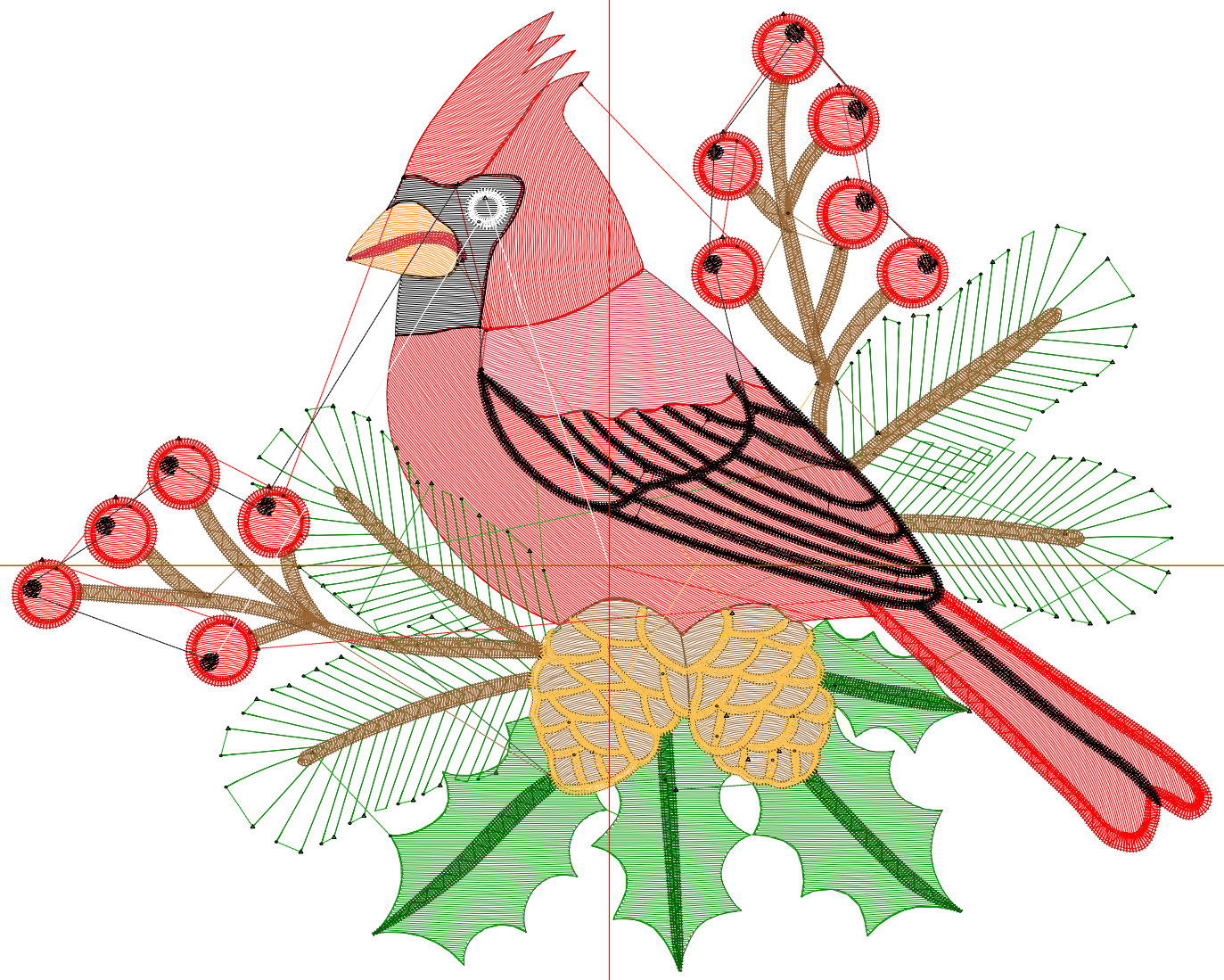
Wilcom EmbroideryStudio - Designing



Design: **7**

Title:

Stitches: 27,302  
Height: 5.60 in  
Width: 7.01 in  
Colors: 9  
Colorway: Colorway 1  
Zoom: 1:1



# Production Worksheet

Wilcom EmbroideryStudio - Designing



Design: **7**

Title:

Stitches: 27,302  
 Height: 5.60 in  
 Width: 7.01 in  
 Colors: 9  
 Colorway: Colorway 1  
 Zoom: 1:1

Machine format: Tajima  
 Color changes: 9  
 Stops: 10  
 Trims: 118  
 Appliqués: 0  
 Left: 88.7 mm  
 Right: 89.4 mm  
 Up: 82.1 mm  
 Down: 60.1 mm  
 EndX: 0.00 in  
 EndY: 0.00 in  
 Area 39.28 in<sup>2</sup>  
 Max stitch: 6.9 mm  
 Min stitch: 0.0 mm  
 Max jump: 6.9 mm  
 Total thread: 422.69ft  
 Total bobbin: 142.38ft

Stop Sequence:

| #   | N# | Color | St.   | Code | Name          | Chart   |
|-----|----|-------|-------|------|---------------|---------|
| 1.  | 3  |       | 1,882 | 3    | Red           | Default |
| 2.  | 1  |       | 3,976 | 1    | Dark Green    | Default |
| 3.  | 4  |       | 902   |      | R0 G97 B0     |         |
| 4.  | 14 |       | 4,438 | 14   | Brown         | Default |
| 5.  | 2  |       | 3,167 |      | R255 G193 B79 |         |
| 6.  | 12 |       | 268   | 12   | Orange        | Default |
| 7.  | 6  |       | 945   |      | R214 G46 B63  |         |
| 8.  | 3  |       | 7,038 | 3    | Red           | Default |
| 9.  | 8  |       | 4,530 | 8    | Black         | Default |
| 10. | 9  |       | 154   | 9    | White         | Default |

# Production Worksheet

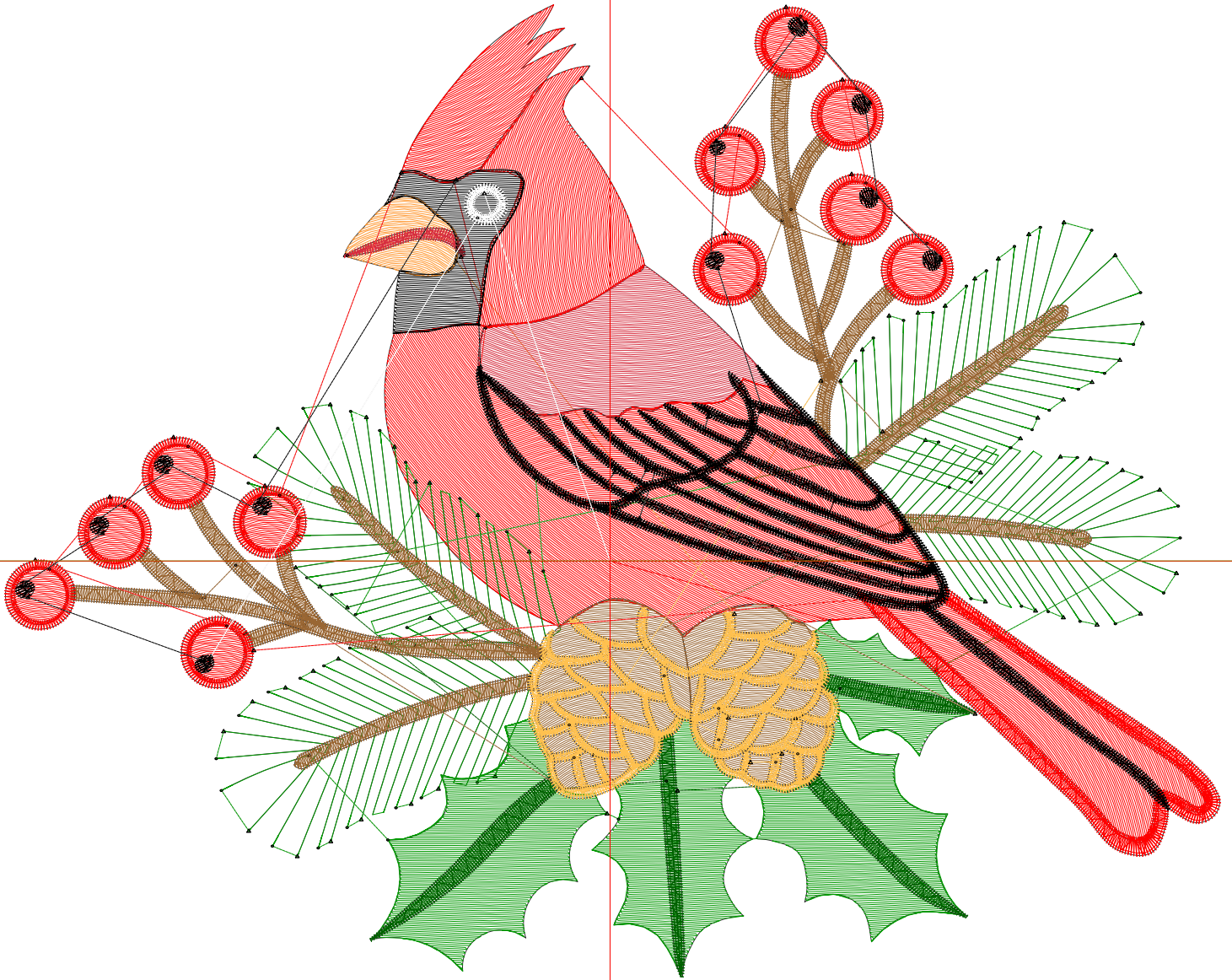
Wilcom EmbroideryStudio - Designing



Design: **7**

Title:

Stitches: 29,871  
Height: 6.00 in  
Width: 7.51 in  
Colors: 9  
Colorway: Colorway 1  
Zoom: 1:1



# Production Worksheet

Wilcom EmbroideryStudio - Designing



Design: **7**

Title:

Stitches: 29,871  
 Height: 6.00 in  
 Width: 7.51 in  
 Colors: 9  
 Colorway: Colorway 1  
 Zoom: 1:1

Machine format: Tajima  
 Color changes: 9  
 Stops: 10  
 Trims: 124  
 Appliqués: 0  
 Left: 95.0 mm  
 Right: 95.8 mm  
 Up: 87.3 mm  
 Down: 65.2 mm  
 EndX: 0.00 in  
 EndY: 0.00 in  
 Area 45.10 in<sup>2</sup>  
 Max stitch: 6.9 mm  
 Min stitch: 0.0 mm  
 Max jump: 6.9 mm  
 Total thread: 471.46ft  
 Total bobbin: 161.29ft

Stop Sequence:

| #   | N# | Color | St.   | Code | Name          | Chart   |
|-----|----|-------|-------|------|---------------|---------|
| 1.  | 3  |       | 2,131 | 3    | Red           | Default |
| 2.  | 1  |       | 4,398 | 1    | Dark Green    | Default |
| 3.  | 4  |       | 971   |      | R0 G97 B0     |         |
| 4.  | 14 |       | 4,883 | 14   | Brown         | Default |
| 5.  | 2  |       | 3,344 |      | R255 G193 B79 |         |
| 6.  | 12 |       | 293   | 12   | Orange        | Default |
| 7.  | 6  |       | 1,059 |      | R214 G46 B63  |         |
| 8.  | 3  |       | 7,763 | 3    | Red           | Default |
| 9.  | 8  |       | 4,864 | 8    | Black         | Default |
| 10. | 9  |       | 163   | 9    | White         | Default |