

Production Worksheet

Wilcom EmbroideryStudio - Designing



Design: **3**

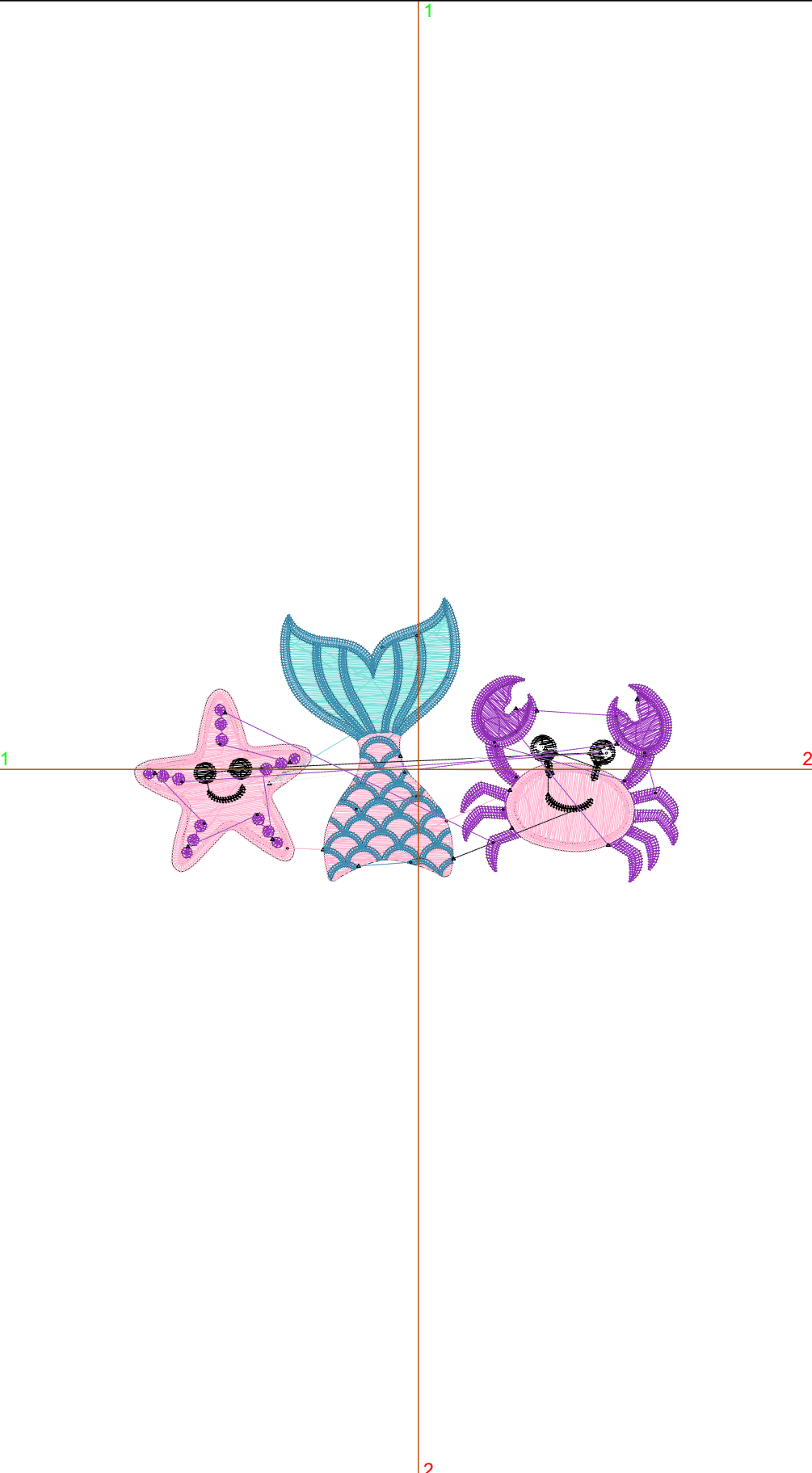
Title:

Stitches: 8,572
 Height: 46.6 mm
 Width: 89.2 mm
 Colors: 6
 Colorway: Colorway 1
 Zoom: 1:1

Machine format: Tajima
 Color changes: 5
 Stops: 6
 Trims: 29
 Appliqués: 0
 Left: 46.6 mm
 Right: 42.6 mm
 Up: 28.1 mm
 Down: 18.5 mm
 EndX: 0.0 mm
 EndY: 0.0 mm
 Area: 4156.7 mm²
 Max stitch: 7.0 mm
 Min stitch: 0.0 mm
 Max jump: 7.0 mm
 Total thread: 38.63m
 Total bobbin: 12.38m

Stop Sequence:

| # | N# | Color | St. | Code | Name | Chart |
|----|----|-------|-------|------|----------------|---------|
| 1. | 4 | | 3,022 | | R255 G183 B209 | |
| 2. | 2 | | 762 | | R127 G224 B221 | |
| 3. | 1 | | 2,279 | | R58 G142 B179 | |
| 4. | 8 | | 487 | 8 | Black | Default |
| 5. | 9 | | 62 | 9 | White | Default |
| 6. | 3 | | 1,958 | | R151 G47 B189 | |



Production Worksheet

Wilcom EmbroideryStudio - Designing



Design: **4**

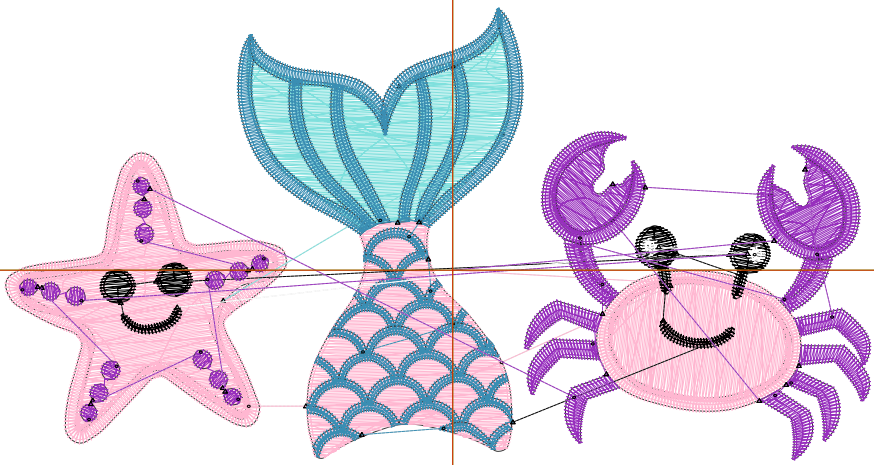
Title:

Stitches: 11,463
 Height: 59.9 mm
 Width: 114.6 mm
 Colors: 6
 Colorway: Colorway 1
 Zoom: 1:1

Machine format: Tajima
 Color changes: 5
 Stops: 6
 Trims: 39
 Appliqués: 0
 Left: 59.3 mm
 Right: 55.3 mm
 Up: 34.7 mm
 Down: 25.1 mm
 EndX: 0.0 mm
 EndY: 0.0 mm
 Area: 6859.8 mm²
 Max stitch: 7.2 mm
 Min stitch: 0.0 mm
 Max jump: 6.9 mm
 Total thread: 55.96m
 Total bobbin: 19.22m

Stop Sequence:

| # | N# | Color | St. | Code | Name | Chart |
|----|----|-------|-------|------|----------------|---------|
| 1. | 4 | | 4,253 | | R255 G183 B209 | |
| 2. | 2 | | 1,129 | | R127 G224 B221 | |
| 3. | 1 | | 2,883 | | R58 G142 B179 | |
| 4. | 8 | | 617 | 8 | Black | Default |
| 5. | 9 | | 77 | 9 | White | Default |
| 6. | 3 | | 2,502 | | R151 G47 B189 | |



Production Worksheet

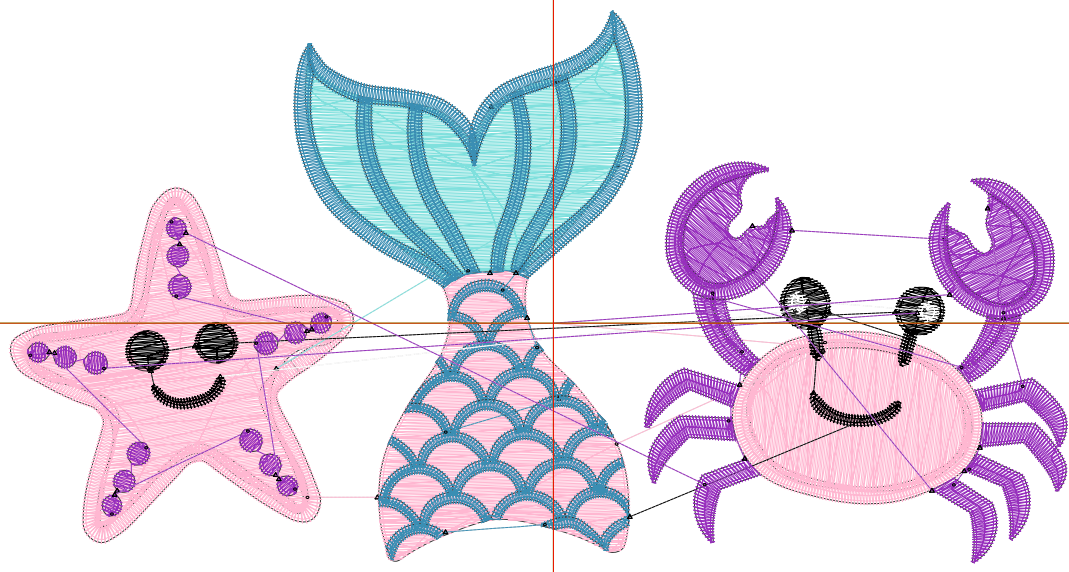
Wilcom EmbroideryStudio - Designing



Design: **5**

Title:

Stitches: 14,573
Height: 73.1 mm
Width: 140.0 mm
Colors: 6
Colorway: Colorway 1
Zoom: 1:1



Production Worksheet

Wilcom EmbroideryStudio - Designing



Design: **5**

Title:

Stitches: 14,573
 Height: 73.1 mm
 Width: 140.0 mm
 Colors: 6
 Colorway: Colorway 1
 Zoom: 1:1

Machine format: Tajima
 Color changes: 5
 Stops: 6
 Trims: 40
 Appliqués: 0
 Left: 72.0 mm
 Right: 68.0 mm
 Up: 41.4 mm
 Down: 31.8 mm
 EndX: 0.0 mm
 EndY: 0.0 mm
 Area 10237.1 mm²
 Max stitch: 8.7 mm
 Min stitch: 0.0 mm
 Max jump: 6.9 mm
 Total thread: 76.36m
 Total bobbin: 27.62m

Stop Sequence:

| # | N# | Color | St. | Code | Name | Chart |
|----|----|-------|-------|------|----------------|---------|
| 1. | 4 | | 5,652 | | R255 G183 B209 | |
| 2. | 2 | | 1,584 | | R127 G224 B221 | |
| 3. | 1 | | 3,460 | | R58 G142 B179 | |
| 4. | 8 | | 742 | 8 | Black | Default |
| 5. | 9 | | 89 | 9 | White | Default |
| 6. | 3 | | 3,044 | | R151 G47 B189 | |

Production Worksheet

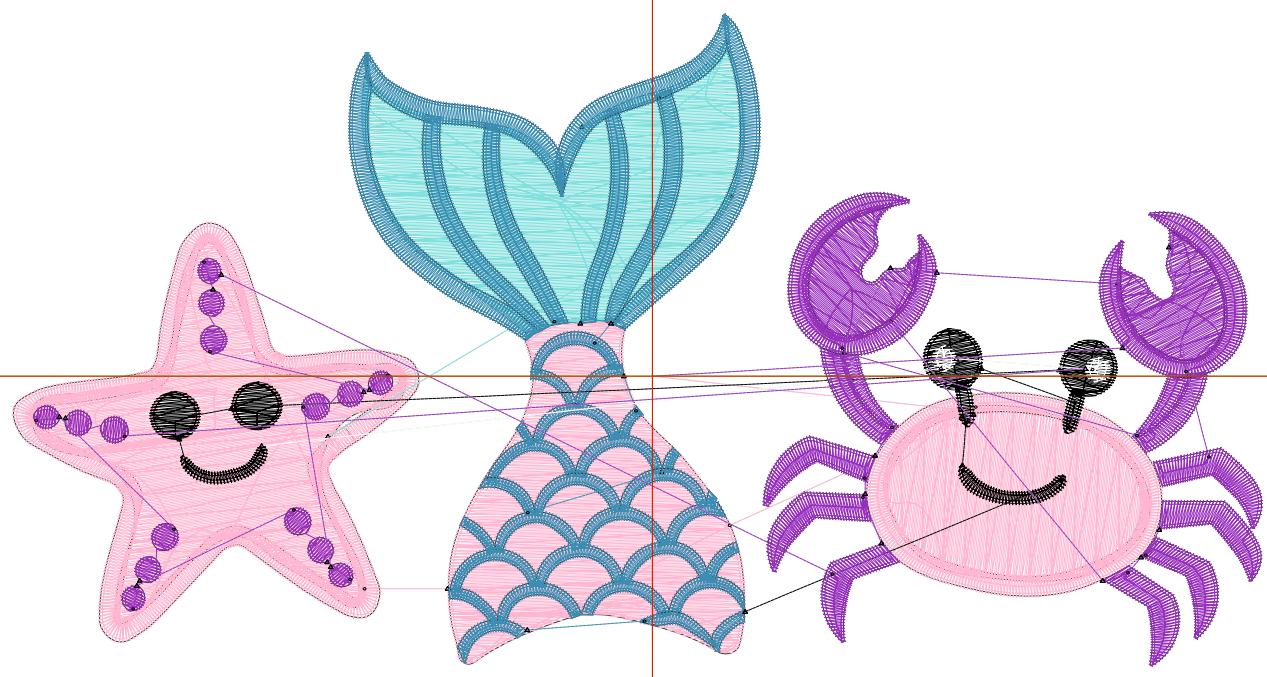
Wilcom EmbroideryStudio - Designing



Design: **6**

Title:

Stitches: 18,062
Height: 86.4 mm
Width: 165.4 mm
Colors: 6
Colorway: Colorway 1
Zoom: 1:1



Production Worksheet

Wilcom EmbroideryStudio - Designing



Design: **6**

Title:

Stitches: 18,062
 Height: 86.4 mm
 Width: 165.4 mm
 Colors: 6
 Colorway: Colorway 1
 Zoom: 1:1

Machine format: Tajima
 Color changes: 5
 Stops: 6
 Trims: 41
 Appliqués: 0
 Left: 84.7 mm
 Right: 80.7 mm
 Up: 48.0 mm
 Down: 38.4 mm
 EndX: 0.0 mm
 EndY: 0.0 mm
 Area 14289.2 mm²
 Max stitch: 10.2 mm
 Min stitch: 0.0 mm
 Max jump: 6.9 mm
 Total thread: 100.47m
 Total bobbin: 37.77m

Stop Sequence:

| # | N# | Color | St. | Code | Name | Chart |
|----|----|-------|-------|------|----------------|---------|
| 1. | 4 | | 7,281 | | R255 G183 B209 | |
| 2. | 2 | | 2,100 | | R127 G224 B221 | |
| 3. | 1 | | 4,049 | | R58 G142 B179 | |
| 4. | 8 | | 908 | 8 | Black | Default |
| 5. | 9 | | 98 | 9 | White | Default |
| 6. | 3 | | 3,624 | | R151 G47 B189 | |

Production Worksheet

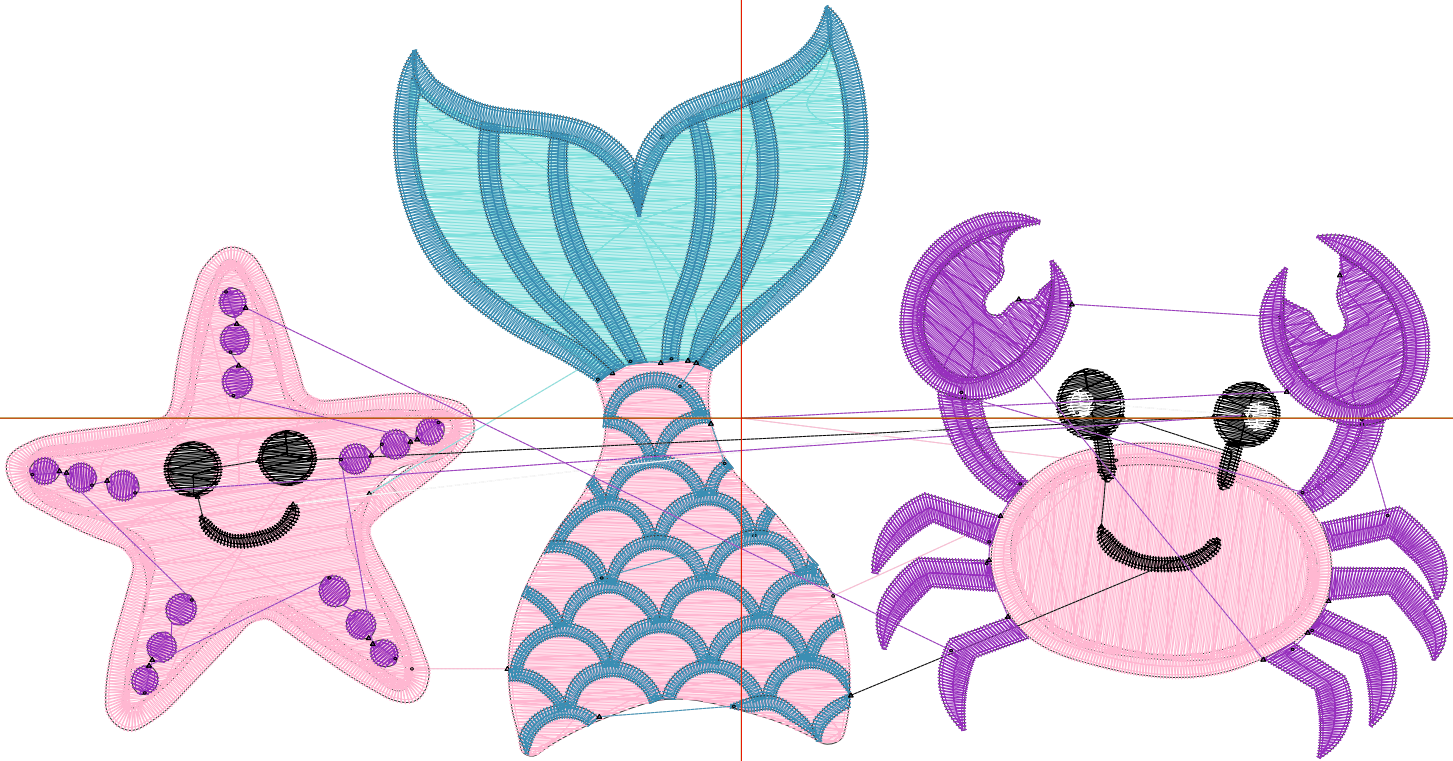
Wilcom EmbroideryStudio - Designing



Design: **7**

Title:

Stitches: 21,882
Height: 99.6 mm
Width: 190.8 mm
Colors: 6
Colorway: Colorway 1
Zoom: 1:1



Production Worksheet

Wilcom EmbroideryStudio - Designing



Design: **7**

Title:

Stitches: 21,882
 Height: 99.6 mm
 Width: 190.8 mm
 Colors: 6
 Colorway: Colorway 1
 Zoom: 1:1

Machine format: Tajima
 Color changes: 5
 Stops: 6
 Trims: 46
 Appliqués: 0
 Left: 97.4 mm
 Right: 93.4 mm
 Up: 54.6 mm
 Down: 45.0 mm
 EndX: 0.0 mm
 EndY: 0.0 mm
 Area 19014.4 mm²
 Max stitch: 11.8 mm
 Min stitch: 0.0 mm
 Max jump: 7.0 mm
 Total thread: 127.99m
 Total bobbin: 49.55m

Stop Sequence:

| # | N# | Color | St. | Code | Name | Chart |
|----|----|-------|-------|------|----------------|---------|
| 1. | 4 | | 9,128 | | R255 G183 B209 | |
| 2. | 2 | | 2,695 | | R127 G224 B221 | |
| 3. | 1 | | 4,681 | | R58 G142 B179 | |
| 4. | 8 | | 1,055 | 8 | Black | Default |
| 5. | 9 | | 111 | 9 | White | Default |
| 6. | 3 | | 4,210 | | R151 G47 B189 | |