

Production Worksheet

Wilcom EmbroideryStudio - Designing



Design: **3**

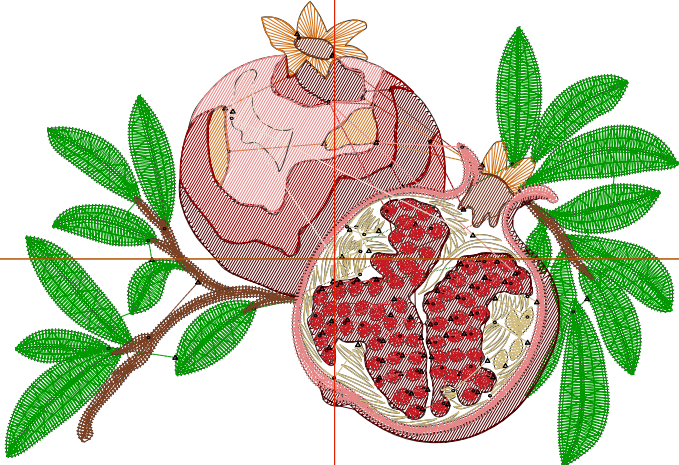
Title:

Stitches: 12,877
Height: 2.42 in
Width: 3.51 in
Colors: 11
Colorway: Colorway 1
Zoom: 1:1

Machine format: Tajima
Color changes: 10
Stops: 11
Trims: 79
Appliqués: 0
Left: 43.6 mm
Right: 45.5 mm
Up: 34.1 mm
Down: 27.5 mm
EndX: 0.00 in
EndY: 0.00 in
Area 8.50 in²
Max stitch: 9.0 mm
Min stitch: 0.0 mm
Max jump: 6.9 mm
Total thread: 180.82ft
Total bobbin: 54.94ft

Stop Sequence:

#	N#	Color	St.	Code	Name	Chart
1.	1		4,234	1	Dark Green	Default
2.	3		719		R122 G65 B37	
3.	9		892	9	White	Default
4.	2		1,590		R84 G0 B0	
5.	4		411		R209 G114 B25	
6.	7		140		R117 G44 B21	
7.	11		611	11	Dark Red	Default
8.	8		2,208		R199 G26 B34	
9.	5		1,317		R230 G135 B135	
10.	10		694		R209 G188 B128	
11.	6		59		R237 G214 B199	



Production Worksheet

Wilcom EmbroideryStudio - Designing



Design: **4**

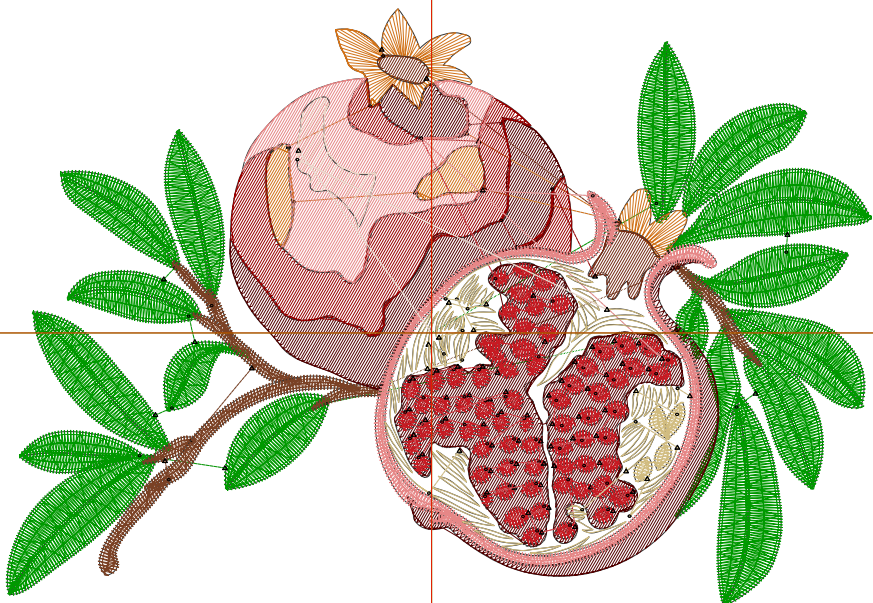
Title:

Stitches: 16,757
 Height: 3.11 in
 Width: 4.51 in
 Colors: 11
 Colorway: Colorway 1
 Zoom: 1:1

Machine format: Tajima
 Color changes: 10
 Stops: 11
 Trims: 93
 Appliqués: 0
 Left: 56.3 mm
 Right: 58.2 mm
 Up: 42.9 mm
 Down: 36.3 mm
 EndX: 0.00 in
 EndY: 0.00 in
 Area: 14.04 in²
 Max stitch: 11.5 mm
 Min stitch: 0.0 mm
 Max jump: 6.8 mm
 Total thread: 257.44ft
 Total bobbin: 85.26ft

Stop Sequence:

#	N#	Color	St.	Code	Name	Chart
1.	1		5,489	1	Dark Green	Default
2.	3		928		R122 G65 B37	
3.	9		1,277	9	White	Default
4.	2		2,257		R84 G0 B0	
5.	4		583		R209 G114 B25	
6.	7		180		R117 G44 B21	
7.	11		824	11	Dark Red	Default
8.	8		2,586		R199 G26 B34	
9.	5		1,756		R230 G135 B135	
10.	10		795		R209 G188 B128	
11.	6		80		R237 G214 B199	



Production Worksheet

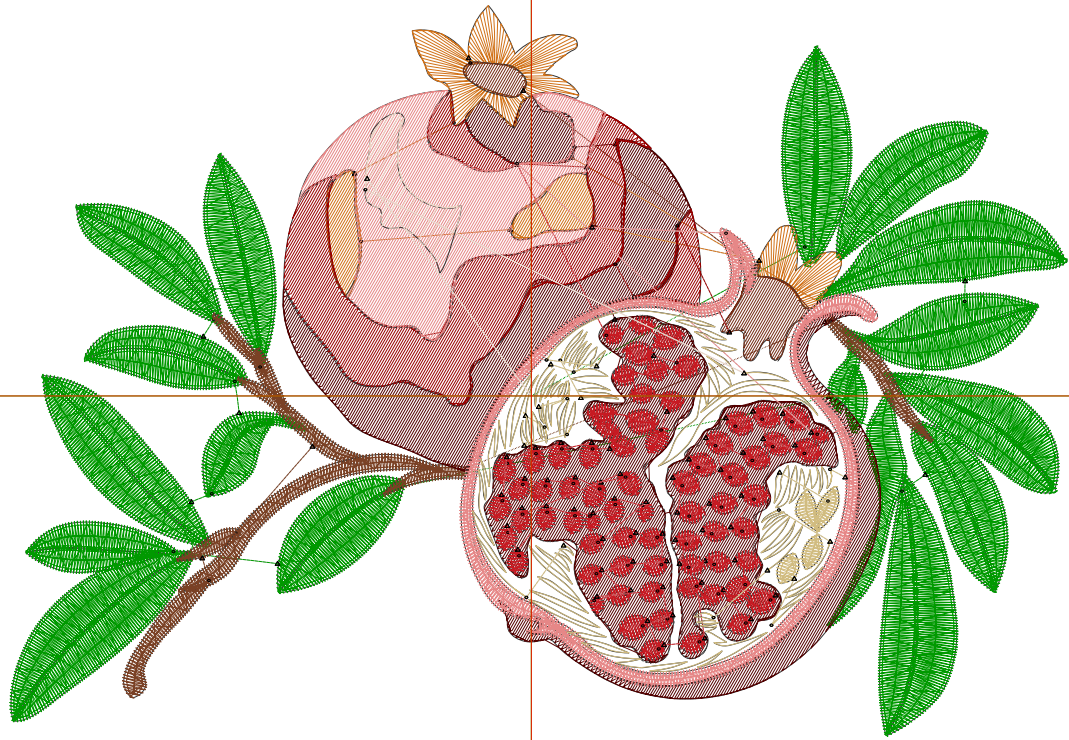
Wilcom EmbroideryStudio - Designing



Design: **5**

Title:

Stitches: 21,005
Height: 3.81 in
Width: 5.51 in
Colors: 11
Colorway: Colorway 1
Zoom: 1:1



1

1

2

2

Production Worksheet

Wilcom EmbroideryStudio - Designing



Design: **5**

Title:

Stitches: 21,005
 Height: 3.81 in
 Width: 5.51 in
 Colors: 11
 Colorway: Colorway 1
 Zoom: 1:1

Machine format: Tajima
 Color changes: 10
 Stops: 11
 Trims: 98
 Appliqués: 0
 Left: 69.0 mm
 Right: 70.9 mm
 Up: 51.6 mm
 Down: 45.0 mm
 EndX: 0.00 in
 EndY: 0.00 in
 Area 20.96 in²
 Max stitch: 6.8 mm
 Min stitch: 0.0 mm
 Max jump: 6.9 mm
 Total thread: 349.02ft
 Total bobbin: 123.01ft

Stop Sequence:

#	N#	Color	St.	Code	Name	Chart
1.	1		6,799	1	Dark Green	Default
2.	3		1,125		R122 G65 B37	
3.	9		1,675	9	White	Default
4.	2		3,071		R84 G0 B0	
5.	4		717		R209 G114 B25	
6.	7		242		R117 G44 B21	
7.	11		1,107	11	Dark Red	Default
8.	8		3,053		R199 G26 B34	
9.	5		2,228		R230 G135 B135	
10.	10		883		R209 G188 B128	
11.	6		103		R237 G214 B199	

Production Worksheet

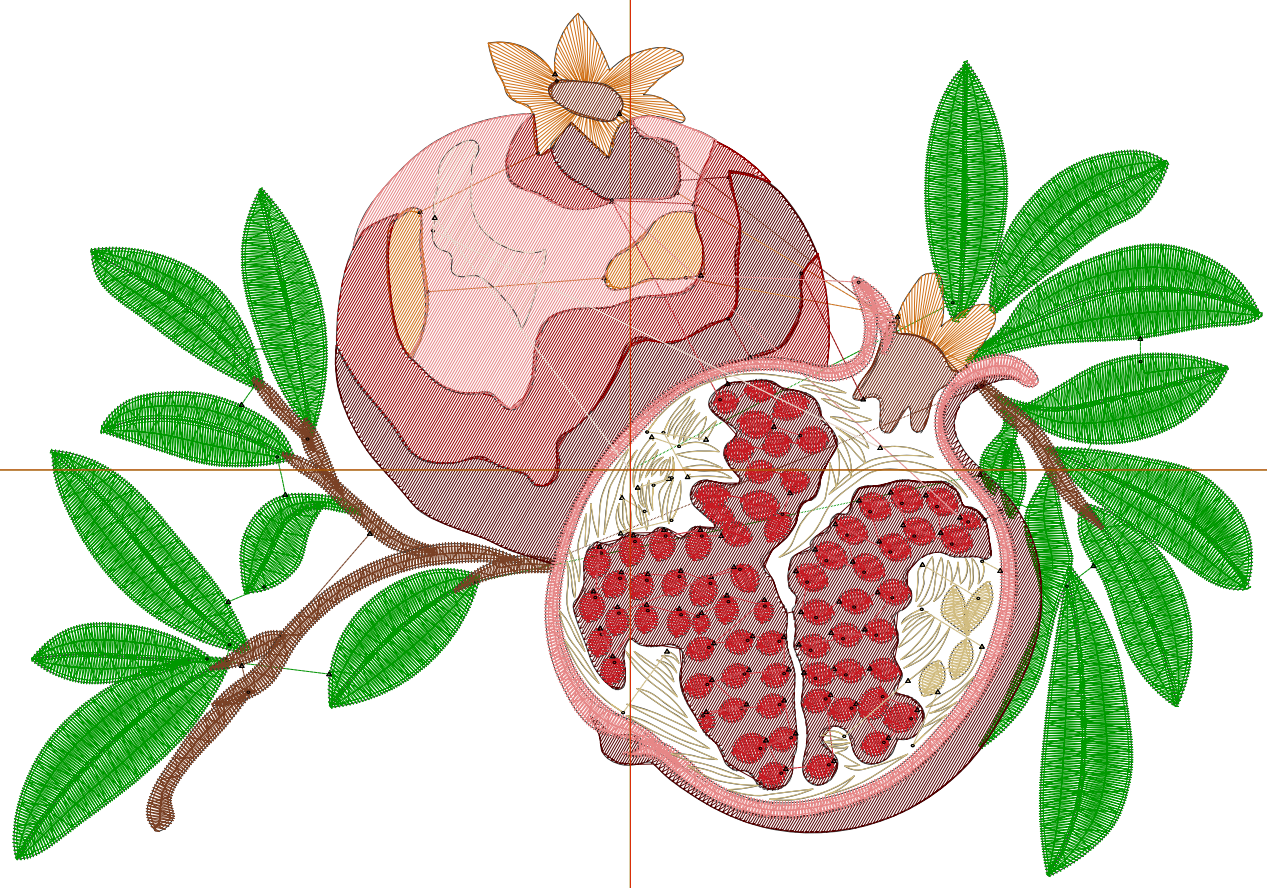
Wilcom EmbroideryStudio - Designing



Design: **6**

Title:

Stitches: 25,668
Height: 4.50 in
Width: 6.51 in
Colors: 11
Colorway: Colorway 1
Zoom: 1:1



Production Worksheet

Wilcom EmbroideryStudio - Designing



Design: **6**

Title:

Stitches: 25,668
 Height: 4.50 in
 Width: 6.51 in
 Colors: 11
 Colorway: Colorway 1
 Zoom: 1:1

Machine format: Tajima
 Color changes: 10
 Stops: 11
 Trims: 101
 Appliqués: 0
 Left: 81.7 mm
 Right: 83.6 mm
 Up: 60.4 mm
 Down: 53.8 mm
 EndX: 0.00 in
 EndY: 0.00 in
 Area 29.26 in²
 Max stitch: 6.8 mm
 Min stitch: 0.0 mm
 Max jump: 6.7 mm
 Total thread: 456.72ft
 Total bobbin: 168.70ft

Stop Sequence:

#	N#	Color	St.	Code	Name	Chart
1.	1		8,253	1	Dark Green	Default
2.	3		1,325		R122 G65 B37	
3.	9		2,175	9	White	Default
4.	2		3,967		R84 G0 B0	
5.	4		887		R209 G114 B25	
6.	7		304		R117 G44 B21	
7.	11		1,433	11	Dark Red	Default
8.	8		3,448		R199 G26 B34	
9.	5		2,745		R230 G135 B135	
10.	10		996		R209 G188 B128	
11.	6		133		R237 G214 B199	

Production Worksheet

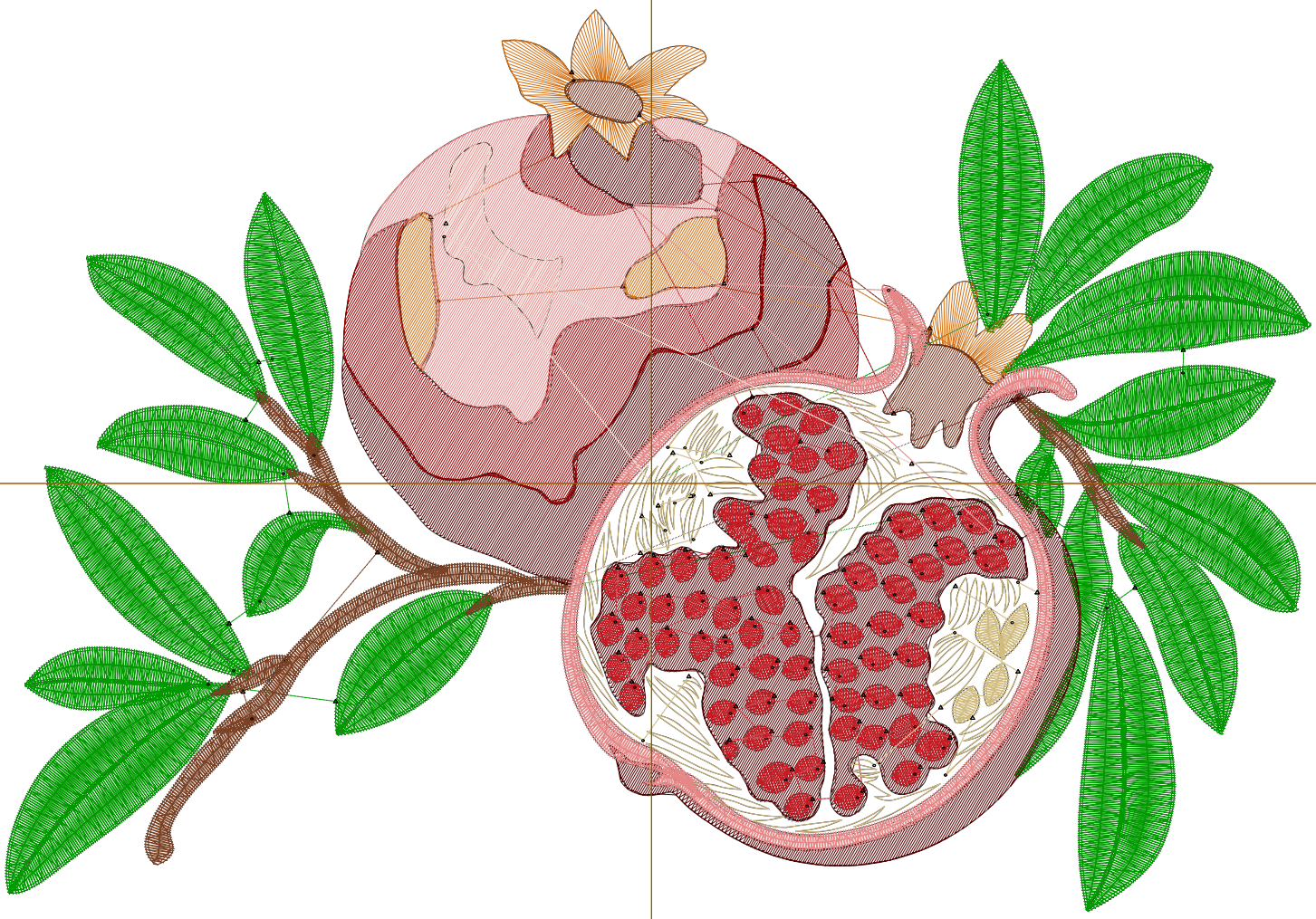
Wilcom EmbroideryStudio - Designing



Design: **7**

Title:

Stitches: 30,594
Height: 5.19 in
Width: 7.51 in
Colors: 11
Colorway: Colorway 1
Zoom: 1:1



Production Worksheet

Wilcom EmbroideryStudio - Designing



Design: **7**

Title:

Stitches: 30,594
 Height: 5.19 in
 Width: 7.51 in
 Colors: 11
 Colorway: Colorway 1
 Zoom: 1:1

Machine format: Tajima
 Color changes: 10
 Stops: 11
 Trims: 103
 Appliqués: 0
 Left: 94.4 mm
 Right: 96.3 mm
 Up: 69.2 mm
 Down: 62.6 mm
 EndX: 0.00 in
 EndY: 0.00 in
 Area 38.95 in²
 Max stitch: 7.8 mm
 Min stitch: 0.0 mm
 Max jump: 6.9 mm
 Total thread: 578.12ft
 Total bobbin: 221.49ft

Stop Sequence:

#	N#	Color	St.	Code	Name	Chart
1.	1		9,822	1	Dark Green	Default
2.	3		1,529		R122 G65 B37	
3.	9		2,661	9	White	Default
4.	2		4,976		R84 G0 B0	
5.	4		1,093		R209 G114 B25	
6.	7		353		R117 G44 B21	
7.	11		1,742	11	Dark Red	Default
8.	8		3,884		R199 G26 B34	
9.	5		3,295		R230 G135 B135	
10.	10		1,086		R209 G188 B128	
11.	6		151		R237 G214 B199	