

# Production Worksheet

Wilcom EmbroideryStudio - Designing



Design: **3**

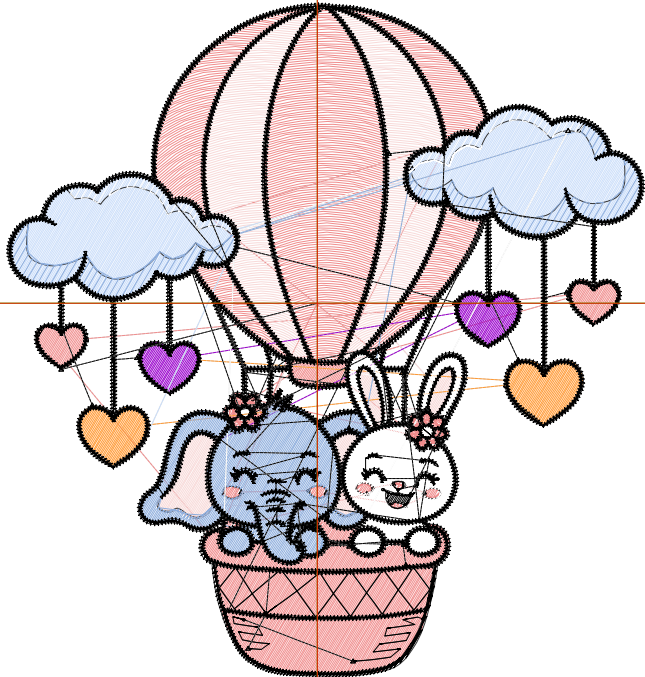
Title:

Stitches: 20,735  
 Height: 3.51 in  
 Width: 3.32 in  
 Colors: 8  
 Colorway: Colorway 1  
 Zoom: 1:1

Machine format: Tajima  
 Color changes: 7  
 Stops: 8  
 Trims: 98  
 Appliqués: 0  
 Left: 41.1 mm  
 Right: 43.3 mm  
 Up: 39.7 mm  
 Down: 49.5 mm  
 EndX: 0.00 in  
 EndY: 0.00 in  
 Area: 11.67 in<sup>2</sup>  
 Max stitch: 6.8 mm  
 Min stitch: 0.0 mm  
 Max jump: 6.8 mm  
 Total thread: 261.90ft  
 Total bobbin: 73.02ft

Stop Sequence:

#	N#	Color	St.	Code	Name	Chart
1.	11		4,042	11	Dark Red	Default
2.	6		1,872	6	Dark Magenta	Default
3.	13		284	13	Purple	Default
4.	12		348	12	Orange	Default
5.	10		1,398	10	Dark Blue	Default
6.	4		1,355	4	Yellow	Default
7.	9		1,113	9	White	Default
8.	8		10,321	8	Black	Default



# Production Worksheet

Wilcom EmbroideryStudio - Designing



Design: **4**

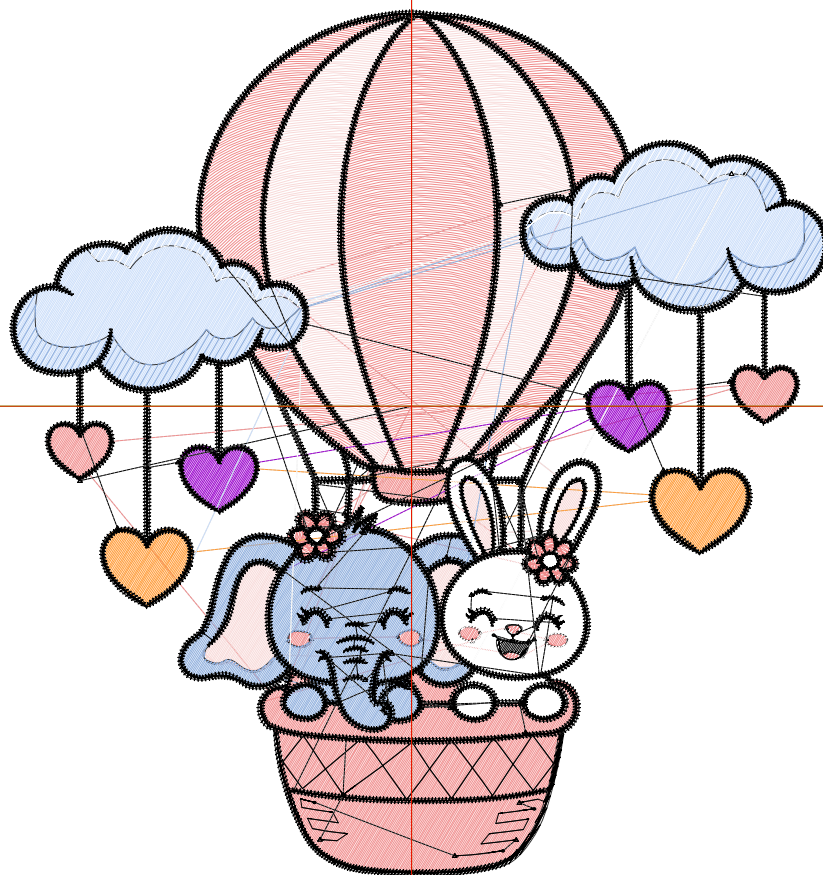
Title:

Stitches: 28,030  
 Height: 4.51 in  
 Width: 4.27 in  
 Colors: 8  
 Colorway: Colorway 1  
 Zoom: 1:1

Machine format: Tajima  
 Color changes: 7  
 Stops: 8  
 Trims: 104  
 Appliqués: 0  
 Left: 53.1 mm  
 Right: 55.3 mm  
 Up: 52.4 mm  
 Down: 62.2 mm  
 EndX: 0.00 in  
 EndY: 0.00 in  
 Area: 19.26 in<sup>2</sup>  
 Max stitch: 7.0 mm  
 Min stitch: 0.0 mm  
 Max jump: 7.0 mm  
 Total thread: 374.59ft  
 Total bobbin: 111.43ft

Stop Sequence:

#	N#	Color	St.	Code	Name	Chart
1.	11		5,851	11	Dark Red	Default
2.	6		2,786	6	Dark Magenta	Default
3.	13		395	13	Purple	Default
4.	12		509	12	Orange	Default
5.	10		2,107	10	Dark Blue	Default
6.	4		1,961	4	Yellow	Default
7.	9		1,542	9	White	Default
8.	8		12,877	8	Black	Default



# Production Worksheet

Wilcom EmbroideryStudio - Designing



Design: **5**

Title:

Stitches: 35,949  
 Height: 5.51 in  
 Width: 5.22 in  
 Colors: 8  
 Colorway: Colorway 1  
 Zoom: 1:1

Machine format: Tajima  
 Color changes: 7  
 Stops: 8  
 Trims: 109  
 Appliqués: 0  
 Left: 65.2 mm  
 Right: 67.3 mm  
 Up: 65.1 mm  
 Down: 74.8 mm  
 EndX: 0.00 in  
 EndY: 0.00 in  
 Area: 28.74 in<sup>2</sup>  
 Max stitch: 7.0 mm  
 Min stitch: 0.0 mm  
 Max jump: 7.0 mm  
 Total thread: 504.38ft  
 Total bobbin: 157.55ft

Stop Sequence:

#	N#	Color	St.	Code	Name	Chart
1.	11		8,089	11	Dark Red	Default
2.	6		3,688	6	Dark Magenta	Default
3.	13		524	13	Purple	Default
4.	12		673	12	Orange	Default
5.	10		2,949	10	Dark Blue	Default
6.	4		2,558	4	Yellow	Default
7.	9		2,021	9	White	Default
8.	8		15,445	8	Black	Default



# Production Worksheet

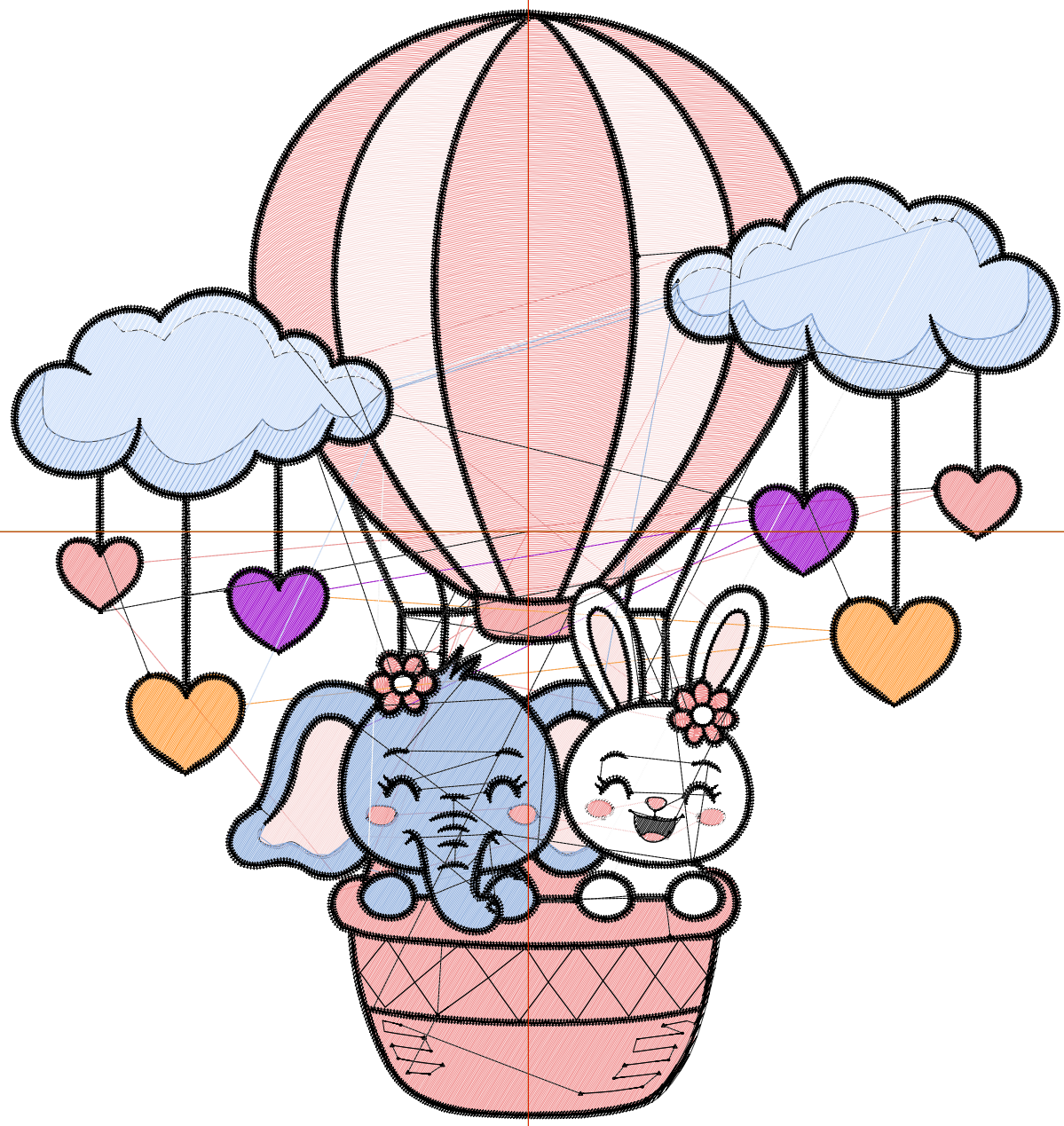
Wilcom EmbroideryStudio - Designing



Design: **6**

Title:

Stitches: 44,938  
Height: 6.51 in  
Width: 6.16 in  
Colors: 8  
Colorway: Colorway 1  
Zoom: 1:1



# Production Worksheet

Wilcom EmbroideryStudio - Designing



Design: **6**

Title:

Stitches: 44,938  
 Height: 6.51 in  
 Width: 6.16 in  
 Colors: 8  
 Colorway: Colorway 1  
 Zoom: 1:1

Machine format: Tajima  
 Color changes: 7  
 Stops: 8  
 Trims: 115  
 Appliqués: 0  
 Left: 77.2 mm  
 Right: 79.3 mm  
 Up: 77.8 mm  
 Down: 87.5 mm  
 EndX: 0.00 in  
 EndY: 0.00 in  
 Area 40.11 in<sup>2</sup>  
 Max stitch: 7.0 mm  
 Min stitch: 0.0 mm  
 Max jump: 7.0 mm  
 Total thread: 654.97ft  
 Total bobbin: 211.84ft

Stop Sequence:

#	N#	Color	St.	Code	Name	Chart
1.	11		10,641	11	Dark Red	Default
2.	6		4,794	6	Dark Magenta	Default
3.	13		676	13	Purple	Default
4.	12		877	12	Orange	Default
5.	10		3,932	10	Dark Blue	Default
6.	4		3,321	4	Yellow	Default
7.	9		2,543	9	White	Default
8.	8		18,152	8	Black	Default

# Production Worksheet

Wilcom EmbroideryStudio - Designing



Design: 7

Title:

Stitches: 54,554  
Height: 7.51 in  
Width: 7.11 in  
Colors: 8  
Colorway: Colorway 1  
Zoom: 1:1



# Production Worksheet

Wilcom EmbroideryStudio - Designing



Design: **7**

Title:

Stitches: 54,554  
 Height: 7.51 in  
 Width: 7.11 in  
 Colors: 8  
 Colorway: Colorway 1  
 Zoom: 1:1

Machine format: Tajima  
 Color changes: 7  
 Stops: 8  
 Trims: 120  
 Appliqués: 0  
 Left: 89.2 mm  
 Right: 91.3 mm  
 Up: 90.6 mm  
 Down: 100.2 mm  
 EndX: 0.00 in  
 EndY: 0.00 in  
 Area 53.38 in<sup>2</sup>  
 Max stitch: 6.9 mm  
 Min stitch: 0.0 mm  
 Max jump: 6.9 mm  
 Total thread: 822.77ft  
 Total bobbin: 273.88ft

Stop Sequence:

#	N#	Color	St.	Code	Name	Chart
1.	11		13,515	11	Dark Red	Default
2.	6		6,178	6	Dark Magenta	Default
3.	13		843	13	Purple	Default
4.	12		1,099	12	Orange	Default
5.	10		5,023	10	Dark Blue	Default
6.	4		4,032	4	Yellow	Default
7.	9		3,120	9	White	Default
8.	8		20,742	8	Black	Default