

Production Worksheet

Wilcom EmbroideryStudio - Designing



Design: **3**

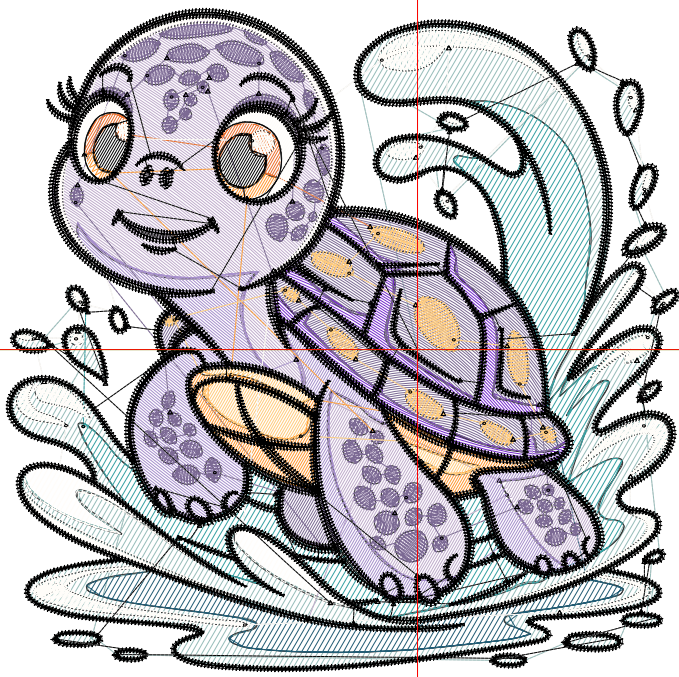
Title:

Stitches: 26,968
 Height: 3.46 in
 Width: 3.51 in
 Colors: 12
 Colorway: Colorway 1
 Zoom: 1:1

Machine format: Tajima
 Color changes: 11
 Stops: 12
 Trims: 149
 Appliqués: 0
 Left: 54.4 mm
 Right: 34.8 mm
 Up: 45.2 mm
 Down: 42.6 mm
 EndX: 0.00 in
 EndY: 0.00 in
 Area: 12.14 in²
 Max stitch: 6.9 mm
 Min stitch: 0.0 mm
 Max jump: 6.9 mm
 Total thread: 345.51ft
 Total bobbin: 97.55ft

Stop Sequence:

#	N#	Color	St.	Code	Name	Chart
1.	1		2,234		R151 G189 B186	
2.	2		810		R55 G161 B163	
3.	3		406		R35 G93 B117	
4.	6		1,935		R192 G172 B204	
5.	4		627		R119 G45 B204	
6.	7		1,279		R167 G144 B204	
7.	5		3,319		R124 G106 B148	
8.	12		664	12	Orange	Default
9.	16		855	16	Sand	Default
10.	9		178		R235 G111 B45	
11.	10		2,921		R255 G253 B249	
12.	8		11,738	8	Black	Default



Production Worksheet

Wilcom EmbroideryStudio - Designing



Design: **4**

Title:

Stitches: 35,560
 Height: 4.44 in
 Width: 4.51 in
 Colors: 12
 Colorway: Colorway 1
 Zoom: 1:1

Machine format: Tajima
 Color changes: 11
 Stops: 12
 Trims: 166
 Appliqués: 0
 Left: 67.2 mm
 Right: 47.5 mm
 Up: 57.6 mm
 Down: 55.1 mm
 EndX: 0.00 in
 EndY: 0.00 in
 Area: 20.03 in²
 Max stitch: 8.9 mm
 Min stitch: 0.0 mm
 Max jump: 6.9 mm
 Total thread: 487.55ft
 Total bobbin: 148.32ft

Stop Sequence:

#	N#	Color	St.	Code	Name	Chart
1.	1		3,003		R151 G189 B186	
2.	2		1,142		R55 G161 B163	
3.	3		555		R35 G93 B117	
4.	6		2,943		R192 G172 B204	
5.	4		848		R119 G45 B204	
6.	7		1,774		R167 G144 B204	
7.	5		4,524		R124 G106 B148	
8.	12		911	12	Orange	Default
9.	16		1,111	16	Sand	Default
10.	9		234		R235 G111 B45	
11.	10		3,709		R255 G253 B249	
12.	8		14,804	8	Black	Default



Production Worksheet

Wilcom EmbroideryStudio - Designing



Design: **5**

Title:

Stitches: 44,346
Height: 5.42 in
Width: 5.51 in
Colors: 12
Colorway: Colorway 1
Zoom: 1:1



Production Worksheet

Wilcom EmbroideryStudio - Designing



Design: **5**

Title:

Stitches: 44,346
 Height: 5.42 in
 Width: 5.51 in
 Colors: 12
 Colorway: Colorway 1
 Zoom: 1:1

Machine format: Tajima
 Color changes: 11
 Stops: 12
 Trims: 171
 Appliqués: 0
 Left: 79.9 mm
 Right: 60.2 mm
 Up: 70.1 mm
 Down: 67.6 mm
 EndX: 0.00 in
 EndY: 0.00 in
 Area 29.89 in²
 Max stitch: 10.9 mm
 Min stitch: 0.0 mm
 Max jump: 7.0 mm
 Total thread: 649.27ft
 Total bobbin: 209.98ft

Stop Sequence:

#	N#	Color	St.	Code	Name	Chart
1.	1		3,889		R151 G189 B186	
2.	2		1,539		R55 G161 B163	
3.	3		730		R35 G93 B117	
4.	6		4,074		R192 G172 B204	
5.	4		1,139		R119 G45 B204	
6.	7		2,383		R167 G144 B204	
7.	5		5,317		R124 G106 B148	
8.	12		1,180	12	Orange	Default
9.	16		1,375	16	Sand	Default
10.	9		304		R235 G111 B45	
11.	10		4,527		R255 G253 B249	
12.	8		17,887	8	Black	Default

Production Worksheet

Wilcom EmbroideryStudio - Designing



Design: 6

Title:

Stitches: 54,212
Height: 6.41 in
Width: 6.51 in
Colors: 12
Colorway: Colorway 1
Zoom: 1:1



Production Worksheet

Wilcom EmbroideryStudio - Designing



Design: **6**

Title:

Stitches: 54,212
 Height: 6.41 in
 Width: 6.51 in
 Colors: 12
 Colorway: Colorway 1
 Zoom: 1:1

Machine format: Tajima
 Color changes: 11
 Stops: 12
 Trims: 182
 Appliqués: 0
 Left: 92.6 mm
 Right: 72.9 mm
 Up: 82.6 mm
 Down: 80.1 mm
 EndX: 0.00 in
 EndY: 0.00 in
 Area 41.72 in²
 Max stitch: 7.9 mm
 Min stitch: 0.0 mm
 Max jump: 7.0 mm
 Total thread: 836.77ft
 Total bobbin: 282.73ft

Stop Sequence:

#	N#	Color	St.	Code	Name	Chart
1.	1		4,843		R151 G189 B186	
2.	2		1,948		R55 G161 B163	
3.	3		916		R35 G93 B117	
4.	6		5,516		R192 G172 B204	
5.	4		1,419		R119 G45 B204	
6.	7		3,092		R167 G144 B204	
7.	5		6,571		R124 G106 B148	
8.	12		1,466	12	Orange	Default
9.	16		1,654	16	Sand	Default
10.	9		372		R235 G111 B45	
11.	10		5,374		R255 G253 B249	
12.	8		21,039	8	Black	Default

Production Worksheet

Wilcom EmbroideryStudio - Designing



Design: 7

Title:

Stitches: 65,436
Height: 7.39 in
Width: 7.51 in
Colors: 12
Colorway: Colorway 1
Zoom: 1:1



Production Worksheet

Wilcom EmbroideryStudio - Designing



Design: **7**

Title:

Stitches: 65,436
 Height: 7.39 in
 Width: 7.51 in
 Colors: 12
 Colorway: Colorway 1
 Zoom: 1:1

Machine format: Tajima
 Color changes: 11
 Stops: 12
 Trims: 195
 Appliqués: 0
 Left: 105.3 mm
 Right: 85.6 mm
 Up: 95.1 mm
 Down: 92.6 mm
 EndX: 0.00 in
 EndY: 0.00 in
 Area 55.52 in²
 Max stitch: 9.1 mm
 Min stitch: 0.0 mm
 Max jump: 7.0 mm
 Total thread: 1051.22ft
 Total bobbin: 366.17ft

Stop Sequence:

#	N#	Color	St.	Code	Name	Chart
1.	1		5,837		R151 G189 B186	
2.	2		2,484		R55 G161 B163	
3.	3		1,101		R35 G93 B117	
4.	6		7,013		R192 G172 B204	
5.	4		1,798		R119 G45 B204	
6.	7		3,834		R167 G144 B204	
7.	5		8,684		R124 G106 B148	
8.	12		1,778	12	Orange	Default
9.	16		1,961	16	Sand	Default
10.	9		448		R235 G111 B45	
11.	10		6,262		R255 G253 B249	
12.	8		24,234	8	Black	Default