

Production Worksheet

Wilcom EmbroideryStudio - Designing



Design: **3**

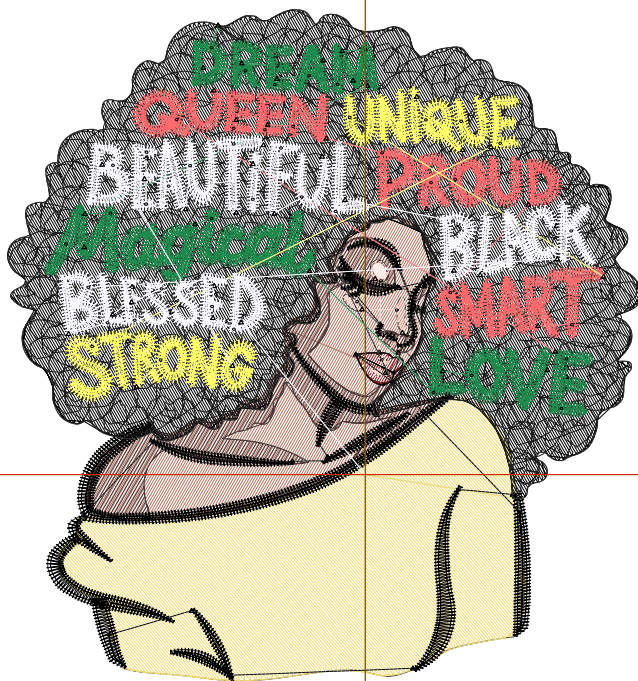
Title:

Stitches: 21,409
 Height: 3.50 in
 Width: 3.29 in
 Colors: 11
 Colorway: Colorway 1
 Zoom: 1:1

Machine format: Tajima
 Color changes: 10
 Stops: 11
 Trims: 84
 Appliqués: 0
 Left: 47.3 mm
 Right: 36.3 mm
 Up: 61.5 mm
 Down: 27.5 mm
 EndX: 0.00 in
 EndY: 0.00 in
 Area: 11.53 in²
 Max stitch: 9.5 mm
 Min stitch: 0.0 mm
 Max jump: 6.9 mm
 Total thread: 321.92ft
 Total bobbin: 105.38ft

Stop Sequence:

#	N#	Color	St.	Code	Name	Chart
1.	10		1,629		R237 G218 B113	
2.	1		1,015		R179 G120 B102	
3.	4		741		R84 G59 B59	
4.	5		67		R135 G35 B40	
5.	2		144		R255 G218 B208	
6.	8		5,529	8	Black	Default
7.	9		3,605		R105 G105 B105	
8.	3		2,270		R27 G140 B76	
9.	7		2,062		R255 G106 B109	
10.	6		1,467		R255 G255 B105	
11.	11		2,878		R250 G249 B255	



Production Worksheet

Wilcom EmbroideryStudio - Designing



Design: **4**

Title:

Stitches: 29,932
 Height: 4.50 in
 Width: 4.23 in
 Colors: 11
 Colorway: Colorway 1
 Zoom: 1:1

Machine format: Tajima
 Color changes: 10
 Stops: 11
 Trims: 92
 Appliqués: 0
 Left: 59.2 mm
 Right: 48.3 mm
 Up: 74.2 mm
 Down: 40.2 mm
 EndX: 0.00 in
 EndY: 0.00 in
 Area: 19.05 in²
 Max stitch: 7.0 mm
 Min stitch: 0.0 mm
 Max jump: 7.0 mm
 Total thread: 480.00ft
 Total bobbin: 165.92ft

Stop Sequence:

#	N#	Color	St.	Code	Name	Chart
1.	10		2,556	R237	G218 B113	
2.	1		1,547	R179	G120 B102	
3.	4		1,000	R84	G59 B59	
4.	5		89	R135	G35 B40	
5.	2		169	R255	G218 B208	
6.	8		8,068	8	Black	Default
7.	9		5,600	R105	G105 B105	
8.	3		2,852	R27	G140 B76	
9.	7		2,579	R255	G106 B109	
10.	6		1,884	R255	G255 B105	
11.	11		3,586	R250	G249 B255	



Production Worksheet

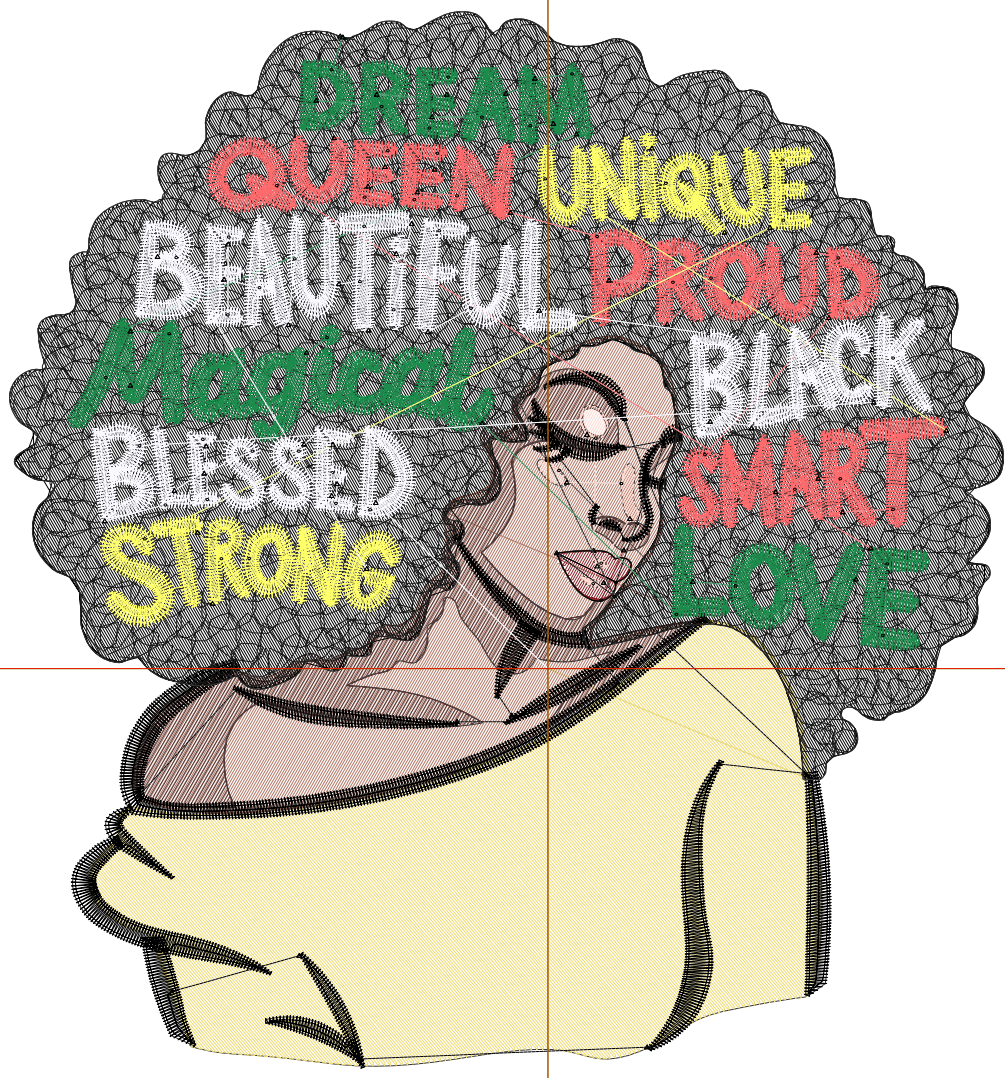
Wilcom EmbroideryStudio - Designing



Design: **5**

Title:

Stitches: 39,687
Height: 5.50 in
Width: 5.17 in
Colors: 11
Colorway: Colorway 1
Zoom: 1:1



1

2

2

Production Worksheet

Wilcom EmbroideryStudio - Designing



Design: **5**

Title:

Stitches: 39,687
 Height: 5.50 in
 Width: 5.17 in
 Colors: 11
 Colorway: Colorway 1
 Zoom: 1:1

Machine format: Tajima
 Color changes: 10
 Stops: 11
 Trims: 97
 Appliqués: 0
 Left: 71.2 mm
 Right: 60.2 mm
 Up: 86.9 mm
 Down: 52.9 mm
 EndX: 0.00 in
 EndY: 0.00 in
 Area 28.46 in²
 Max stitch: 6.9 mm
 Min stitch: 0.0 mm
 Max jump: 6.9 mm
 Total thread: 670.97ft
 Total bobbin: 241.16ft

Stop Sequence:

#	N#	Color	St.	Code	Name	Chart
1.	10		3,652		R237 G218 B113	
2.	1		2,185		R179 G120 B102	
3.	4		1,307		R84 G59 B59	
4.	5		111		R135 G35 B40	
5.	2		219		R255 G218 B208	
6.	8		11,086	8	Black	Default
7.	9		8,079		R105 G105 B105	
8.	3		3,446		R27 G140 B76	
9.	7		3,093		R255 G106 B109	
10.	6		2,248		R255 G255 B105	
11.	11		4,259		R250 G249 B255	

Production Worksheet

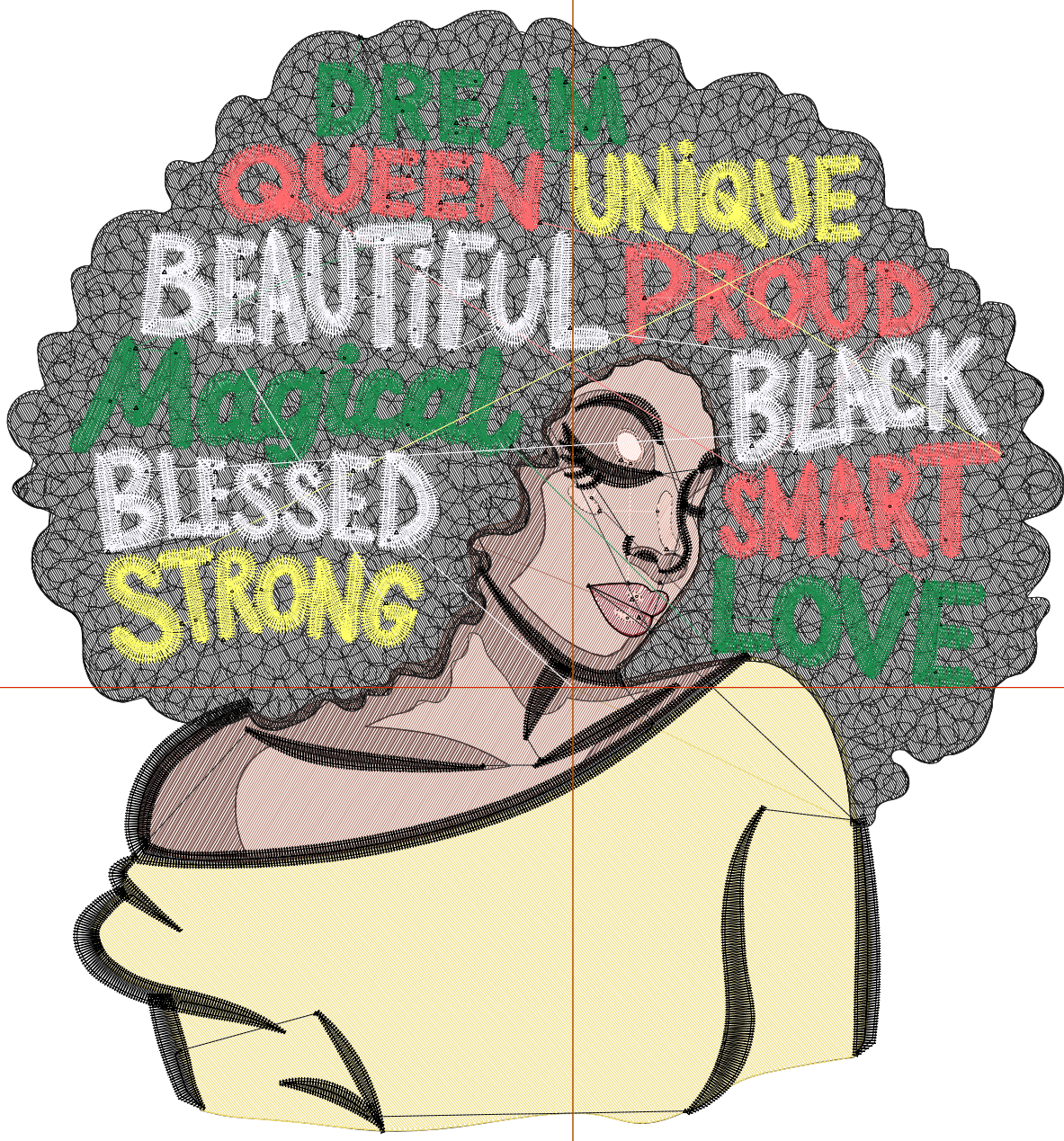
Wilcom EmbroideryStudio - Designing



Design: 6

Title:

Stitches: 50,902
Height: 6.50 in
Width: 6.11 in
Colors: 11
Colorway: Colorway 1
Zoom: 1:1



1

2

2

Production Worksheet

Wilcom EmbroideryStudio - Designing



Design: **6**

Title:

Stitches: 50,902
 Height: 6.50 in
 Width: 6.11 in
 Colors: 11
 Colorway: Colorway 1
 Zoom: 1:1

Machine format: Tajima
 Color changes: 10
 Stops: 11
 Trims: 100
 Appliqués: 0
 Left: 83.1 mm
 Right: 72.2 mm
 Up: 99.6 mm
 Down: 65.6 mm
 EndX: 0.00 in
 EndY: 0.00 in
 Area 39.74 in²
 Max stitch: 7.8 mm
 Min stitch: 0.0 mm
 Max jump: 7.0 mm
 Total thread: 898.16ft
 Total bobbin: 332.18ft

Stop Sequence:

#	N#	Color	St.	Code	Name	Chart
1.	10		4,949		R237 G218 B113	
2.	1		2,940		R179 G120 B102	
3.	4		1,689		R84 G59 B59	
4.	5		139		R135 G35 B40	
5.	2		252		R255 G218 B208	
6.	8		14,583	8	Black	Default
7.	9		11,056		R105 G105 B105	
8.	3		4,021		R27 G140 B76	
9.	7		3,618		R255 G106 B109	
10.	6		2,656		R255 G255 B105	
11.	11		4,997		R250 G249 B255	

Production Worksheet

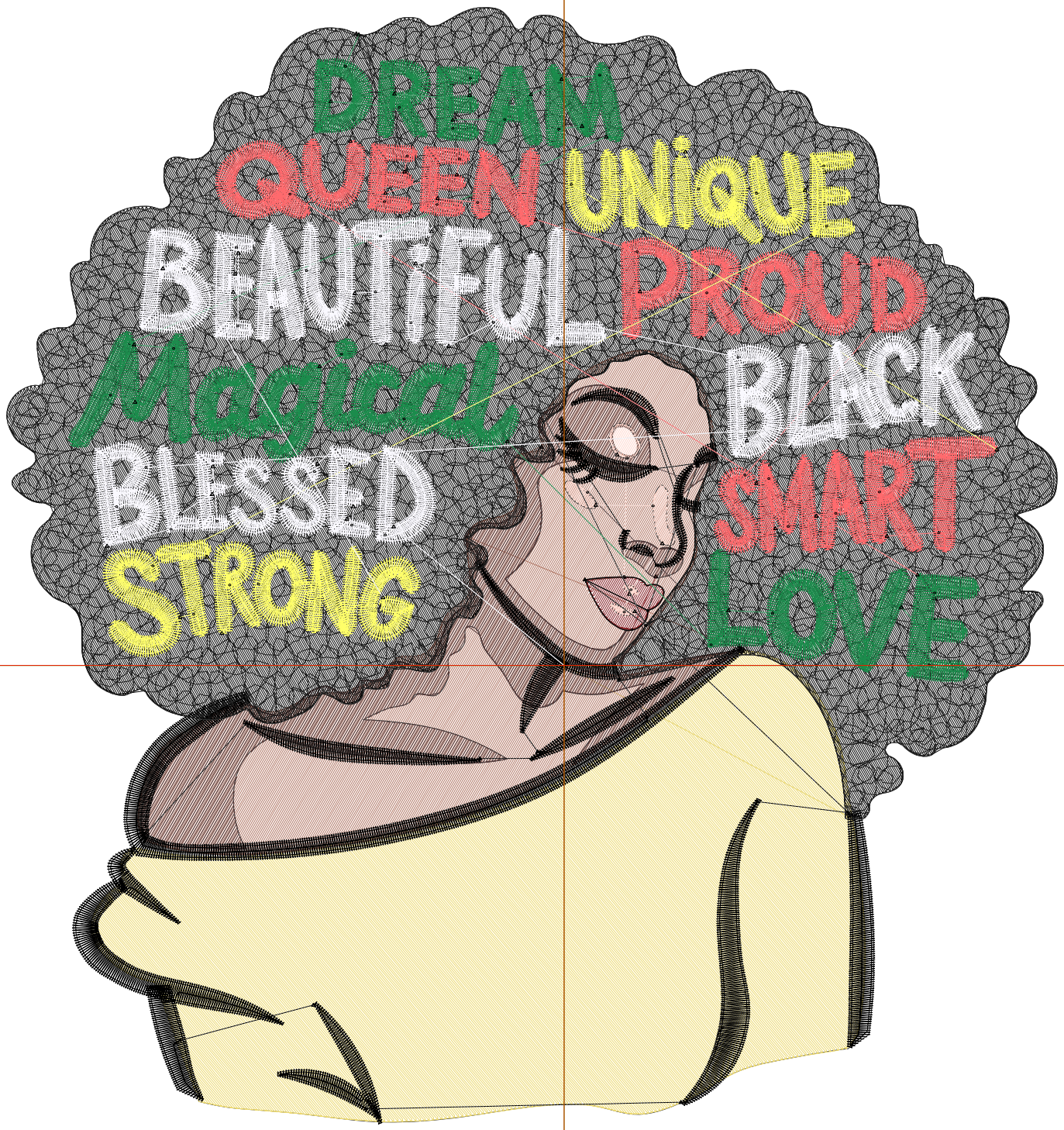
Wilcom EmbroideryStudio - Designing



Design: 7

Title:

Stitches: 63,255
Height: 7.50 in
Width: 7.06 in
Colors: 11
Colorway: Colorway 1
Zoom: 1:1



Production Worksheet

Wilcom EmbroideryStudio - Designing



Design: **7**

Title:

Stitches: 63,255
 Height: 7.50 in
 Width: 7.06 in
 Colors: 11
 Colorway: Colorway 1
 Zoom: 1:1

Machine format: Tajima
 Color changes: 10
 Stops: 11
 Trims: 103
 Appliqués: 0
 Left: 95.1 mm
 Right: 84.1 mm
 Up: 112.3 mm
 Down: 78.3 mm
 EndX: 0.00 in
 EndY: 0.00 in
 Area 52.93 in²
 Max stitch: 9.0 mm
 Min stitch: 0.0 mm
 Max jump: 7.0 mm
 Total thread: 1156.62ft
 Total bobbin: 437.31ft

Stop Sequence:

#	N#	Color	St.	Code	Name	Chart
1.	10		6,450		R237 G218 B113	
2.	1		3,784		R179 G120 B102	
3.	4		2,054		R84 G59 B59	
4.	5		171		R135 G35 B40	
5.	2		290		R255 G218 B208	
6.	8		18,484	8	Black	Default
7.	9		14,470		R105 G105 B105	
8.	3		4,598		R27 G140 B76	
9.	7		4,175		R255 G106 B109	
10.	6		3,047		R255 G255 B105	
11.	11		5,730		R250 G249 B255	