

# Production Worksheet

Wilcom EmbroideryStudio - Designing



Design: **3**

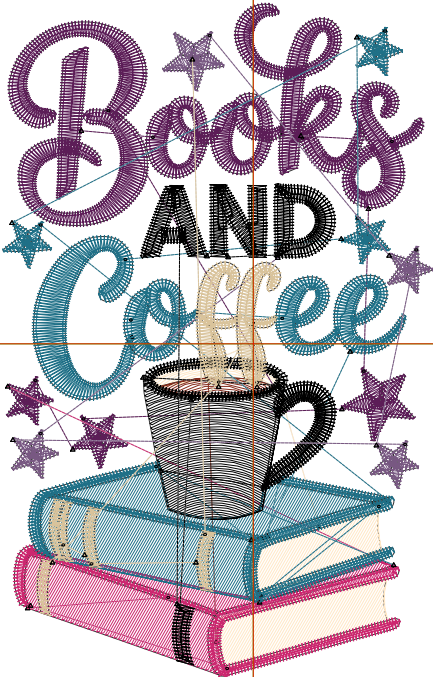
Title:

Stitches: 10,873  
 Height: 3.51 in  
 Width: 2.24 in  
 Colors: 8  
 Colorway: Colorway 1  
 Zoom: 1:1

Machine format: Tajima  
 Color changes: 7  
 Stops: 8  
 Trims: 43  
 Appliqués: 0  
 Left: 33.2 mm  
 Right: 23.8 mm  
 Up: 45.1 mm  
 Down: 44.1 mm  
 EndX: 0.00 in  
 EndY: 0.00 in  
 Area 7.87 in<sup>2</sup>  
 Max stitch: 7.0 mm  
 Min stitch: 0.0 mm  
 Max jump: 7.0 mm  
 Total thread: 156.44ft  
 Total bobbin: 48.87ft

Stop Sequence:

#	N#	Color	St.	Code	Name	Chart
1.	3		562		R255 G232 B199	
2.	6		78		R133 G43 B27	
3.	2		2,736		R92 G29 B87	
4.	5		1,173		R204 G39 B111	
5.	4		2,954		R31 G112 B135	
6.	8		1,816	8	Black	Default
7.	7		713		R120 G88 B130	
8.	9		839		R217 G195 B155	



# Production Worksheet

Wilcom EmbroideryStudio - Designing



Design: **4**

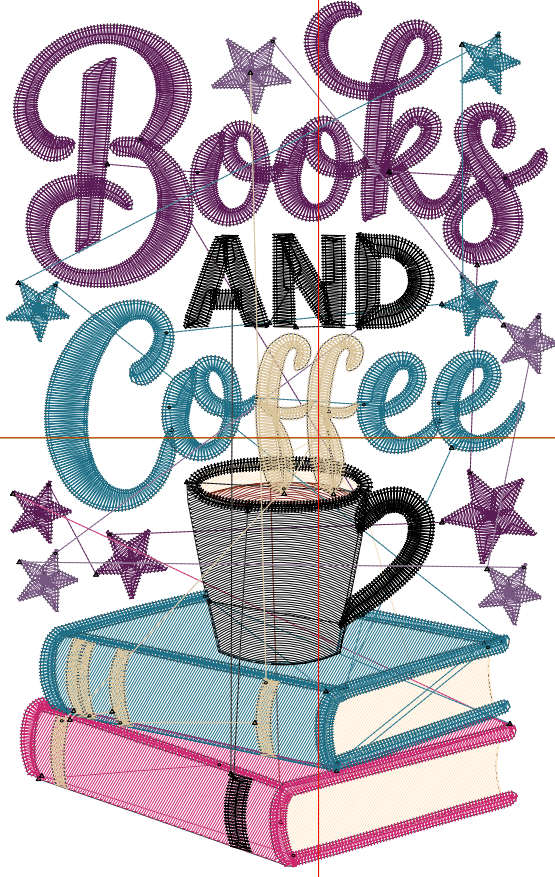
Title:

Stitches: 14,164  
 Height: 4.51 in  
 Width: 2.88 in  
 Colors: 8  
 Colorway: Colorway 1  
 Zoom: 1:1

Machine format: Tajima  
 Color changes: 7  
 Stops: 8  
 Trims: 45  
 Appliqués: 0  
 Left: 41.3 mm  
 Right: 31.9 mm  
 Up: 57.8 mm  
 Down: 56.8 mm  
 EndX: 0.00 in  
 EndY: 0.00 in  
 Area: 12.99 in<sup>2</sup>  
 Max stitch: 6.9 mm  
 Min stitch: 0.0 mm  
 Max jump: 6.9 mm  
 Total thread: 224.64ft  
 Total bobbin: 76.49ft

Stop Sequence:

#	N#	Color	St.	Code	Name	Chart
1.	3		807		R255 G232 B199	
2.	6		108		R133 G43 B27	
3.	2		3,446		R92 G29 B87	
4.	5		1,583		R204 G39 B111	
5.	4		3,850		R31 G112 B135	
6.	8		2,442	8	Black	Default
7.	7		853		R120 G88 B130	
8.	9		1,073		R217 G195 B155	



# Production Worksheet

Wilcom EmbroideryStudio - Designing



Design: **5**

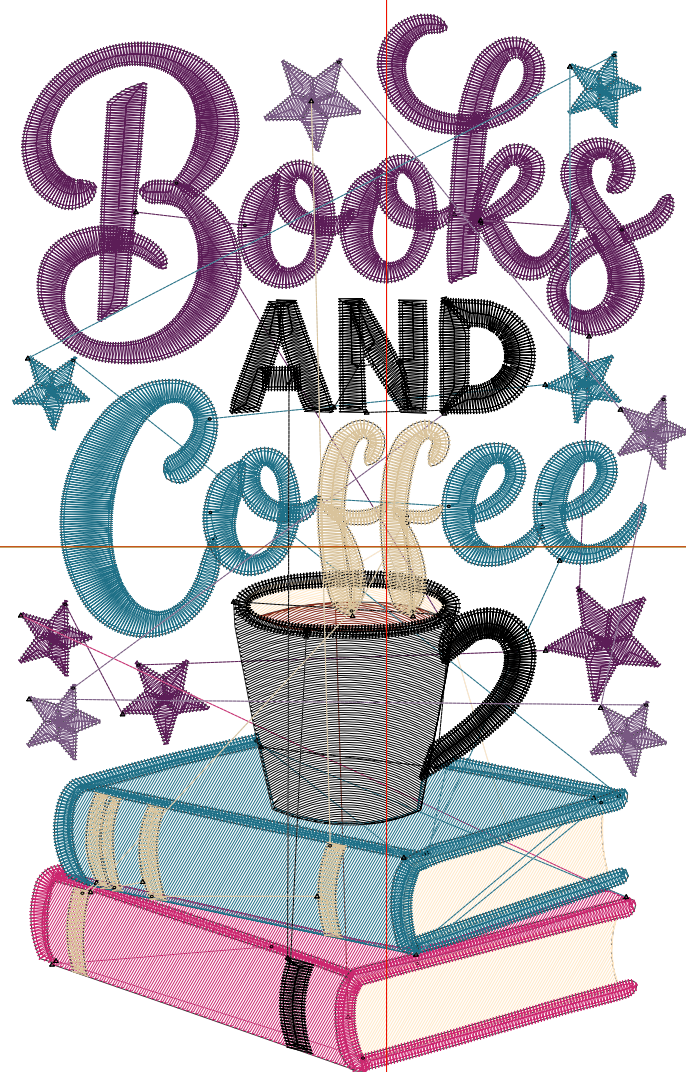
Title:

Stitches: 17,714  
 Height: 5.51 in  
 Width: 3.52 in  
 Colors: 8  
 Colorway: Colorway 1  
 Zoom: 1:1

Machine format: Tajima  
 Color changes: 7  
 Stops: 8  
 Trims: 46  
 Appliqués: 0  
 Left: 49.4 mm  
 Right: 40.0 mm  
 Up: 70.5 mm  
 Down: 69.5 mm  
 EndX: 0.00 in  
 EndY: 0.00 in  
 Area: 19.40 in<sup>2</sup>  
 Max stitch: 7.0 mm  
 Min stitch: 0.0 mm  
 Max jump: 6.9 mm  
 Total thread: 305.92ft  
 Total bobbin: 110.85ft

Stop Sequence:

#	N#	Color	St.	Code	Name	Chart
1.	3		1,098		R255 G232 B199	
2.	6		146		R133 G43 B27	
3.	2		4,200		R92 G29 B87	
4.	5		2,027		R204 G39 B111	
5.	4		4,803		R31 G112 B135	
6.	8		3,144	8	Black	Default
7.	7		999		R120 G88 B130	
8.	9		1,295		R217 G195 B155	



# Production Worksheet

Wilcom EmbroideryStudio - Designing



Design: **6**

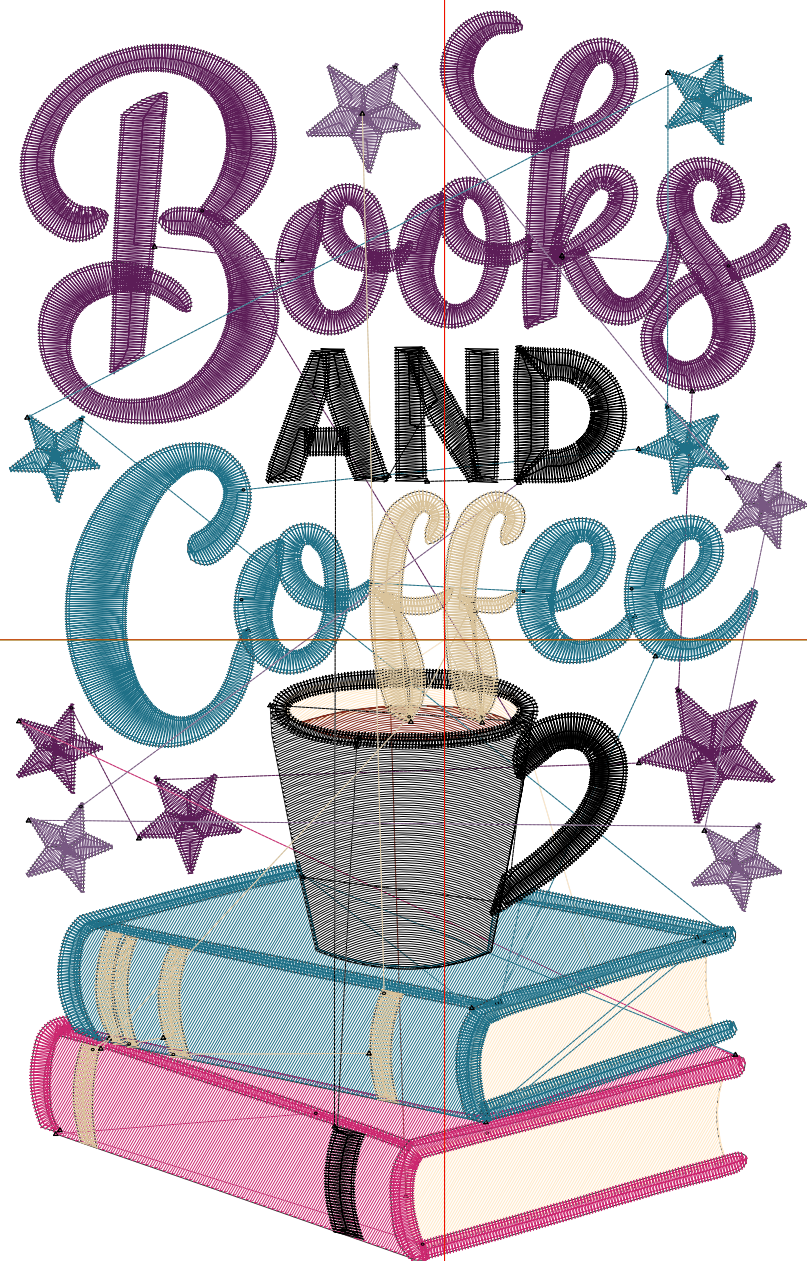
Title:

Stitches: 21,533  
 Height: 6.51 in  
 Width: 4.16 in  
 Colors: 8  
 Colorway: Colorway 1  
 Zoom: 1:1

Machine format: Tajima  
 Color changes: 7  
 Stops: 8  
 Trims: 46  
 Appliqués: 0  
 Left: 57.6 mm  
 Right: 48.1 mm  
 Up: 83.2 mm  
 Down: 82.2 mm  
 EndX: 0.00 in  
 EndY: 0.00 in  
 Area: 27.09 in<sup>2</sup>  
 Max stitch: 8.2 mm  
 Min stitch: 0.0 mm  
 Max jump: 7.0 mm  
 Total thread: 401.21ft  
 Total bobbin: 152.47ft

Stop Sequence:

#	N#	Color	St.	Code	Name	Chart
1.	3		1,430	R255 G232 B199		
2.	6		181	R133 G43 B27		
3.	2		4,983	R92 G29 B87		
4.	5		2,538	R204 G39 B111		
5.	4		5,820	R31 G112 B135		
6.	8		3,899	8 Black		Default
7.	7		1,151	R120 G88 B130		
8.	9		1,529	R217 G195 B155		



# Production Worksheet

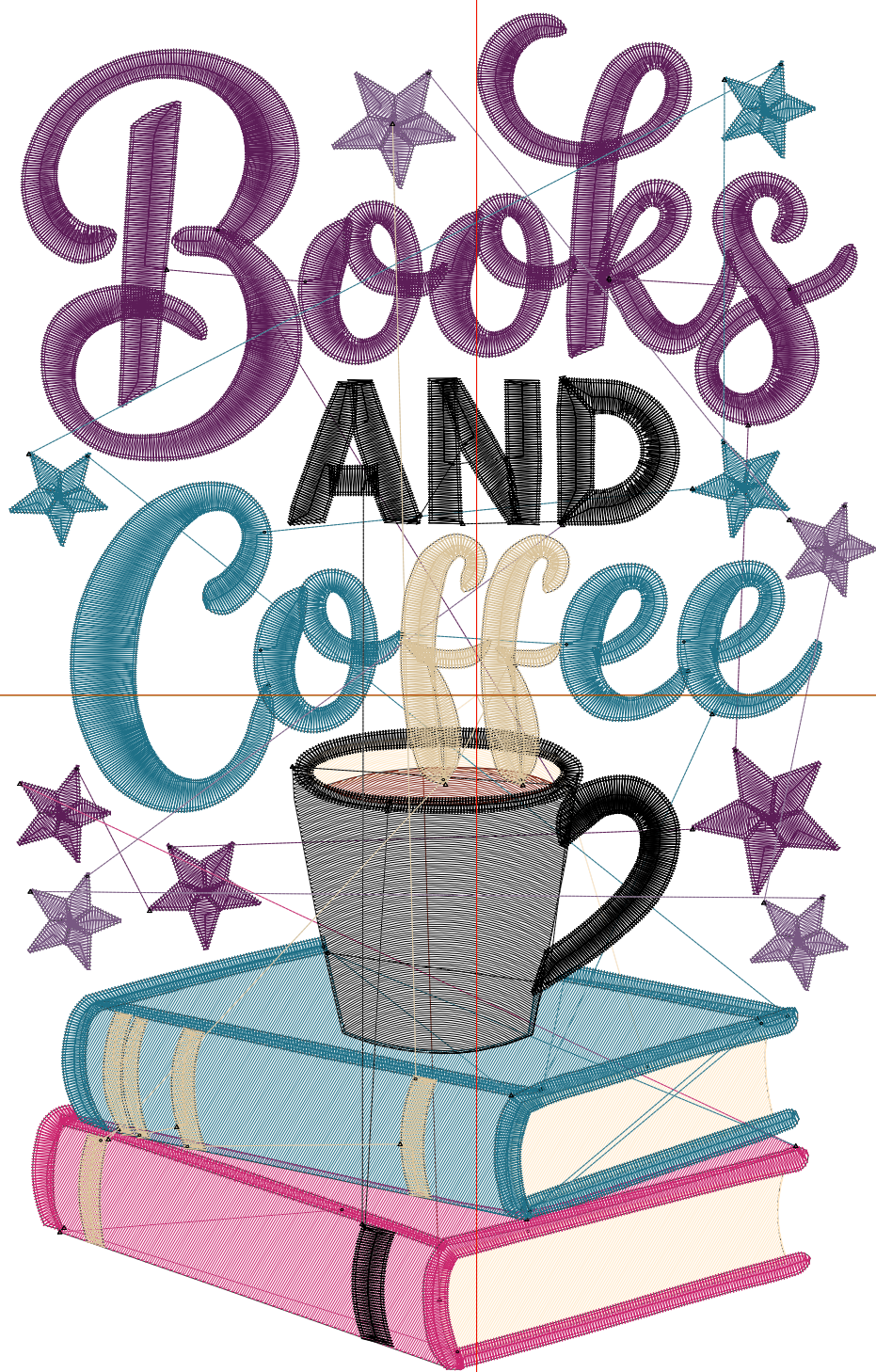
Wilcom EmbroideryStudio - Designing



Design: 7

Title:

Stitches: 25,592  
 Height: 7.51 in  
 Width: 4.80 in  
 Colors: 8  
 Colorway: Colorway 1  
 Zoom: 1:1



Machine format: Tajima  
 Color changes: 7  
 Stops: 8  
 Trims: 46  
 Appliqués: 0  
 Left: 65.7 mm  
 Right: 56.3 mm  
 Up: 95.9 mm  
 Down: 94.9 mm  
 EndX: 0.00 in  
 EndY: 0.00 in  
 Area: 36.05 in<sup>2</sup>  
 Max stitch: 9.4 mm  
 Min stitch: 0.0 mm  
 Max jump: 7.0 mm  
 Total thread: 510.03ft  
 Total bobbin: 201.17ft

Stop Sequence:

#	N#	Color	St.	Code	Name	Chart
1.	3		1,789		R255 G232 B199	
2.	6		234		R133 G43 B27	
3.	2		5,789		R92 G29 B87	
4.	5		3,079		R204 G39 B111	
5.	4		6,898		R31 G112 B135	
6.	8		4,726	8	Black	Default
7.	7		1,307		R120 G88 B130	
8.	9		1,768		R217 G195 B155	