

Production Worksheet

Wilcom EmbroideryStudio - Designing



Design: **3**

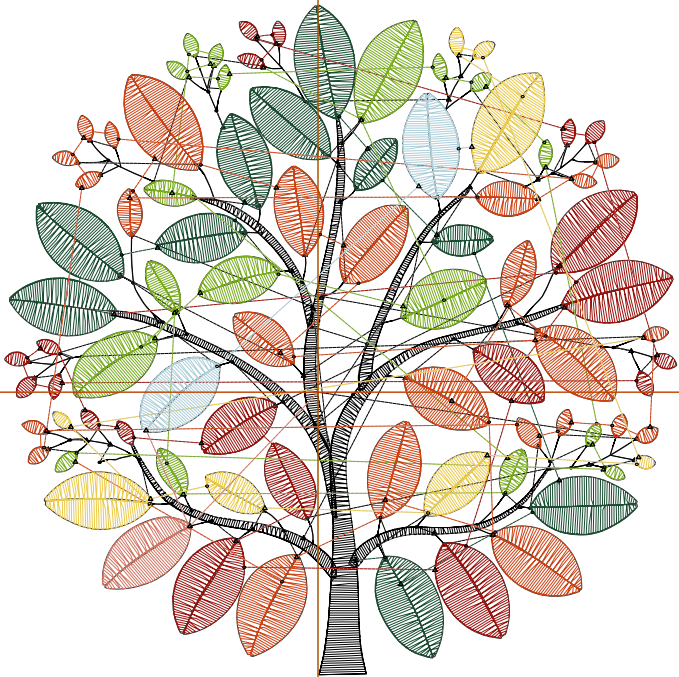
Title:

Stitches: 14,222
 Height: 3.48 in
 Width: 3.49 in
 Colors: 8
 Colorway: Colorway 1
 Zoom: 1:1

Machine format: Tajima
 Color changes: 7
 Stops: 8
 Trims: 140
 Appliqués: 0
 Left: 41.2 mm
 Right: 47.4 mm
 Up: 51.1 mm
 Down: 37.4 mm
 EndX: 0.00 in
 EndY: 0.00 in
 Area 12.14 in²
 Max stitch: 7.0 mm
 Min stitch: 0.0 mm
 Max jump: 7.0 mm
 Total thread: 165.16ft
 Total bobbin: 41.01ft

Stop Sequence:

#	N#	Color	St.	Code	Name	Chart
1.	8		3,033	8	Black	Default
2.	1		2,214		R25 G77 B50	
3.	2		2,215		R153 G19 B14	
4.	3		1,855		R121 G173 B30	
5.	5		3,126		R204 G66 B20	
6.	6		1,037		R235 G203 B77	
7.	4		493		R174 G207 B217	
8.	7		247		R209 G117 B99	



Production Worksheet

Wilcom EmbroideryStudio - Designing



Design: **4**

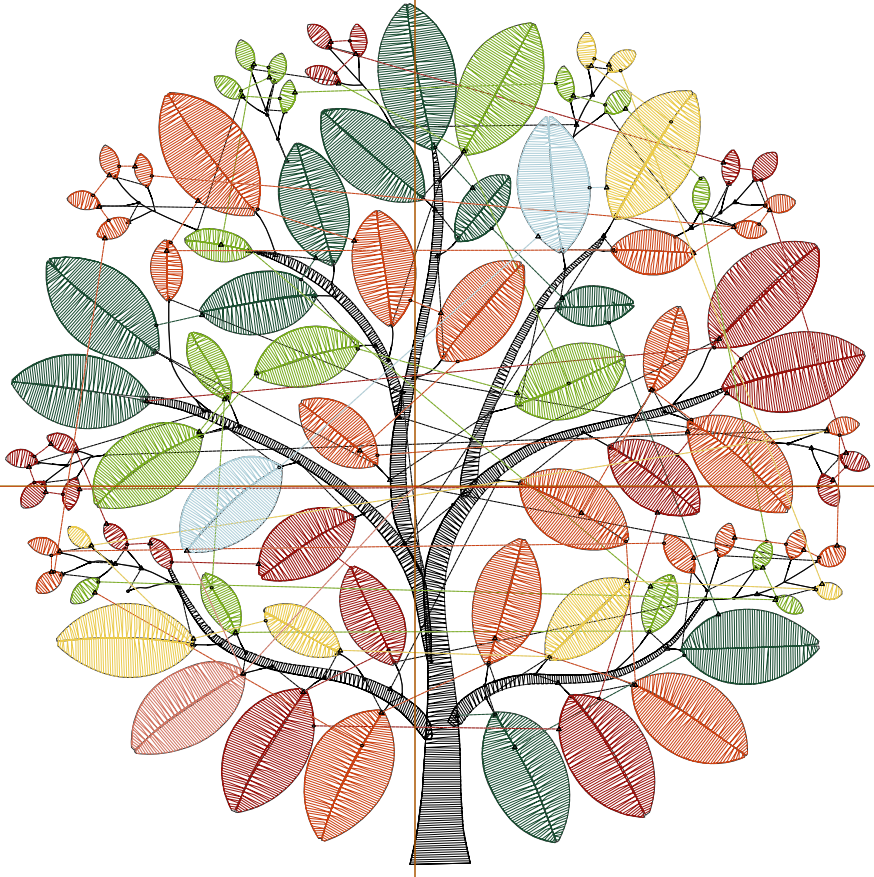
Title:

Stitches: 18,818
Height: 4.48 in
Width: 4.48 in
Colors: 8
Colorway: Colorway 1
Zoom: 1:1

Machine format: Tajima
Color changes: 7
Stops: 8
Trims: 157
Appliqués: 0
Left: 53.8 mm
Right: 60.0 mm
Up: 63.8 mm
Down: 50.0 mm
EndX: 0.00 in
EndY: 0.00 in
Area: 20.08 in²
Max stitch: 7.0 mm
Min stitch: 0.0 mm
Max jump: 7.0 mm
Total thread: 231.53ft
Total bobbin: 62.47ft

Stop Sequence:

#	N#	Color	St.	Code	Name	Chart
1.	8		3,782	8	Black	Default
2.	1		3,051		R25 G77 B50	
3.	2		3,002		R153 G19 B14	
4.	3		2,451		R121 G173 B30	
5.	5		4,112		R204 G66 B20	
6.	6		1,395		R235 G203 B77	
7.	4		686		R174 G207 B217	
8.	7		337		R209 G117 B99	



Production Worksheet

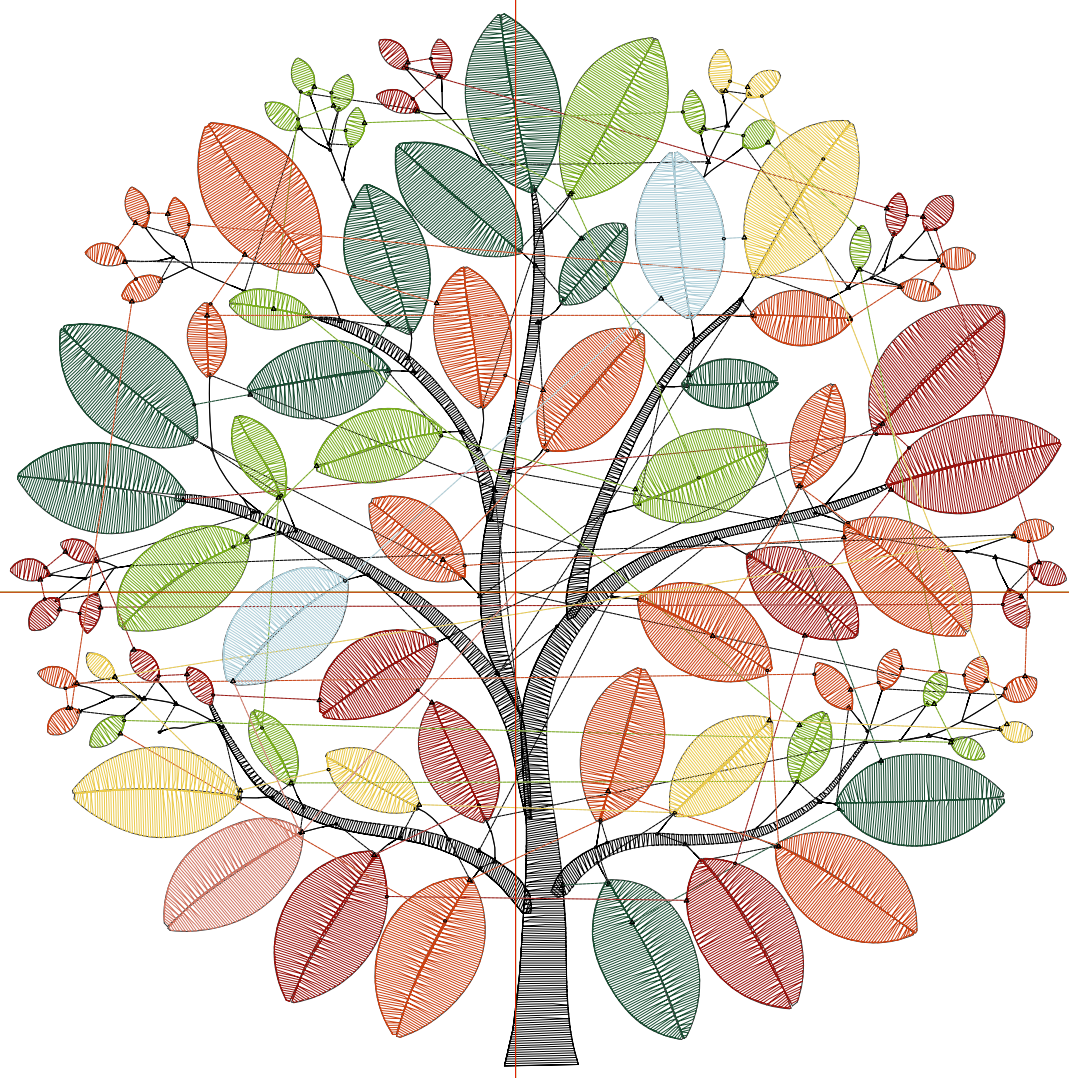
Wilcom EmbroideryStudio - Designing



Design: **5**

Title:

Stitches: 23,494
Height: 5.48 in
Width: 5.49 in
Colors: 8
Colorway: Colorway 1
Zoom: 1:1



Production Worksheet

Wilcom EmbroideryStudio - Designing



Design: **5**

Title:

Stitches: 23,494
 Height: 5.48 in
 Width: 5.49 in
 Colors: 8
 Colorway: Colorway 1
 Zoom: 1:1

Machine format: Tajima
 Color changes: 7
 Stops: 8
 Trims: 161
 Appliqués: 0
 Left: 66.8 mm
 Right: 72.7 mm
 Up: 76.5 mm
 Down: 62.7 mm
 EndX: 0.00 in
 EndY: 0.00 in
 Area 30.09 in²
 Max stitch: 7.0 mm
 Min stitch: 0.0 mm
 Max jump: 7.0 mm
 Total thread: 306.14ft
 Total bobbin: 88.51ft

Stop Sequence:

#	N#	Color	St.	Code	Name	Chart
1.	8		4,567	8	Black	Default
2.	1		3,933		R25 G77 B50	
3.	2		3,743		R153 G19 B14	
4.	3		3,015		R121 G173 B30	
5.	5		5,156		R204 G66 B20	
6.	6		1,748		R235 G203 B77	
7.	4		890		R174 G207 B217	
8.	7		440		R209 G117 B99	

Production Worksheet

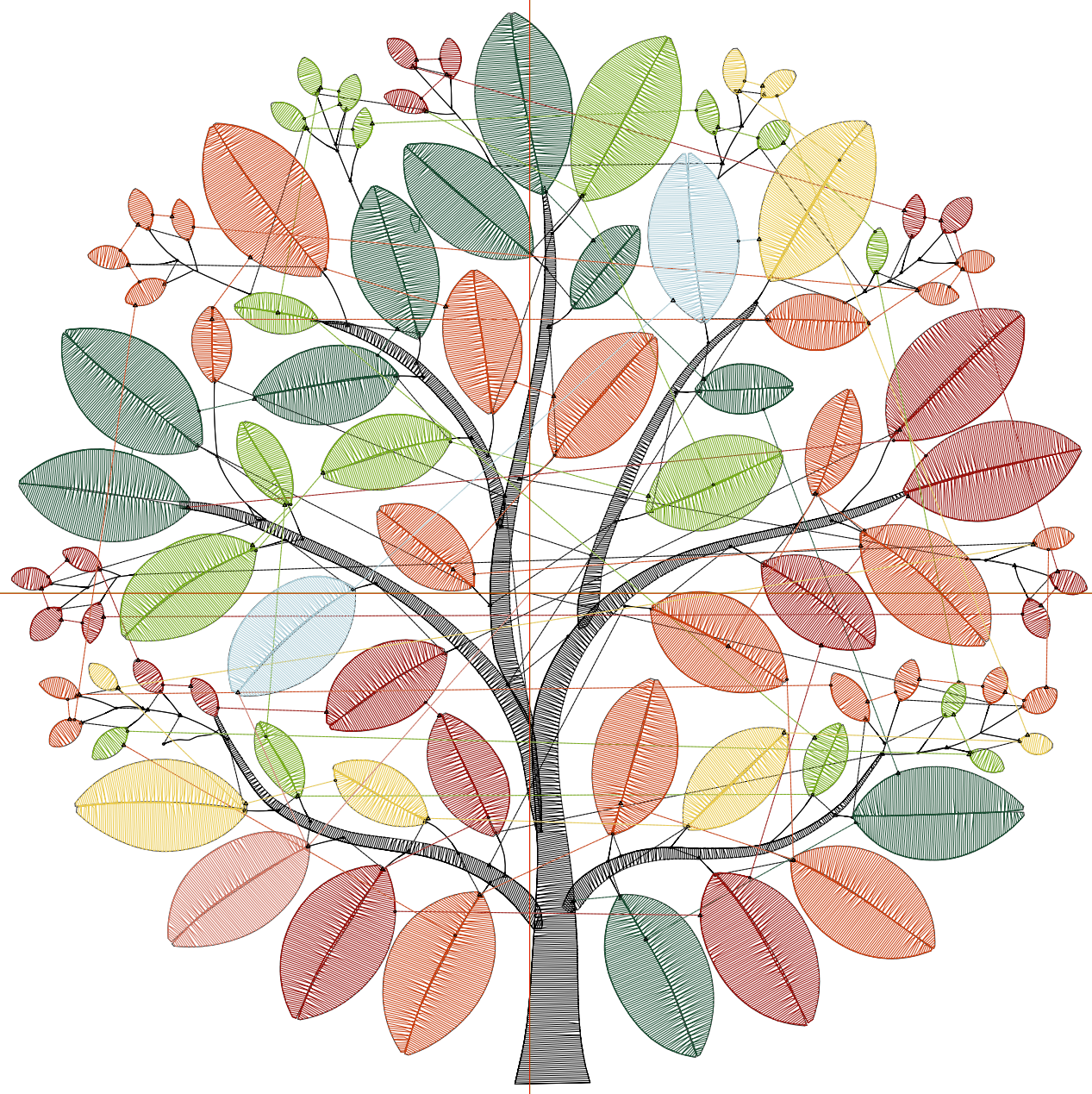
Wilcom EmbroideryStudio - Designing



Design: **6**

Title:

Stitches: 28,647
Height: 6.47 in
Width: 6.50 in
Colors: 8
Colorway: Colorway 1
Zoom: 1:1



Production Worksheet

Wilcom EmbroideryStudio - Designing



Design: **6**

Title:

Stitches: 28,647
 Height: 6.47 in
 Width: 6.50 in
 Colors: 8
 Colorway: Colorway 1
 Zoom: 1:1

Machine format: Tajima
 Color changes: 7
 Stops: 8
 Trims: 161
 Appliqués: 0
 Left: 79.4 mm
 Right: 85.6 mm
 Up: 89.0 mm
 Down: 75.3 mm
 EndX: 0.00 in
 EndY: 0.00 in
 Area 42.03 in²
 Max stitch: 7.1 mm
 Min stitch: 0.0 mm
 Max jump: 7.0 mm
 Total thread: 392.00ft
 Total bobbin: 119.35ft

Stop Sequence:

#	N#	Color	St.	Code	Name	Chart
1.	8		5,341	8	Black	Default
2.	1		4,918		R25 G77 B50	
3.	2		4,609		R153 G19 B14	
4.	3		3,643		R121 G173 B30	
5.	5		6,329		R204 G66 B20	
6.	6		2,144		R235 G203 B77	
7.	4		1,111		R174 G207 B217	
8.	7		550		R209 G117 B99	

Production Worksheet

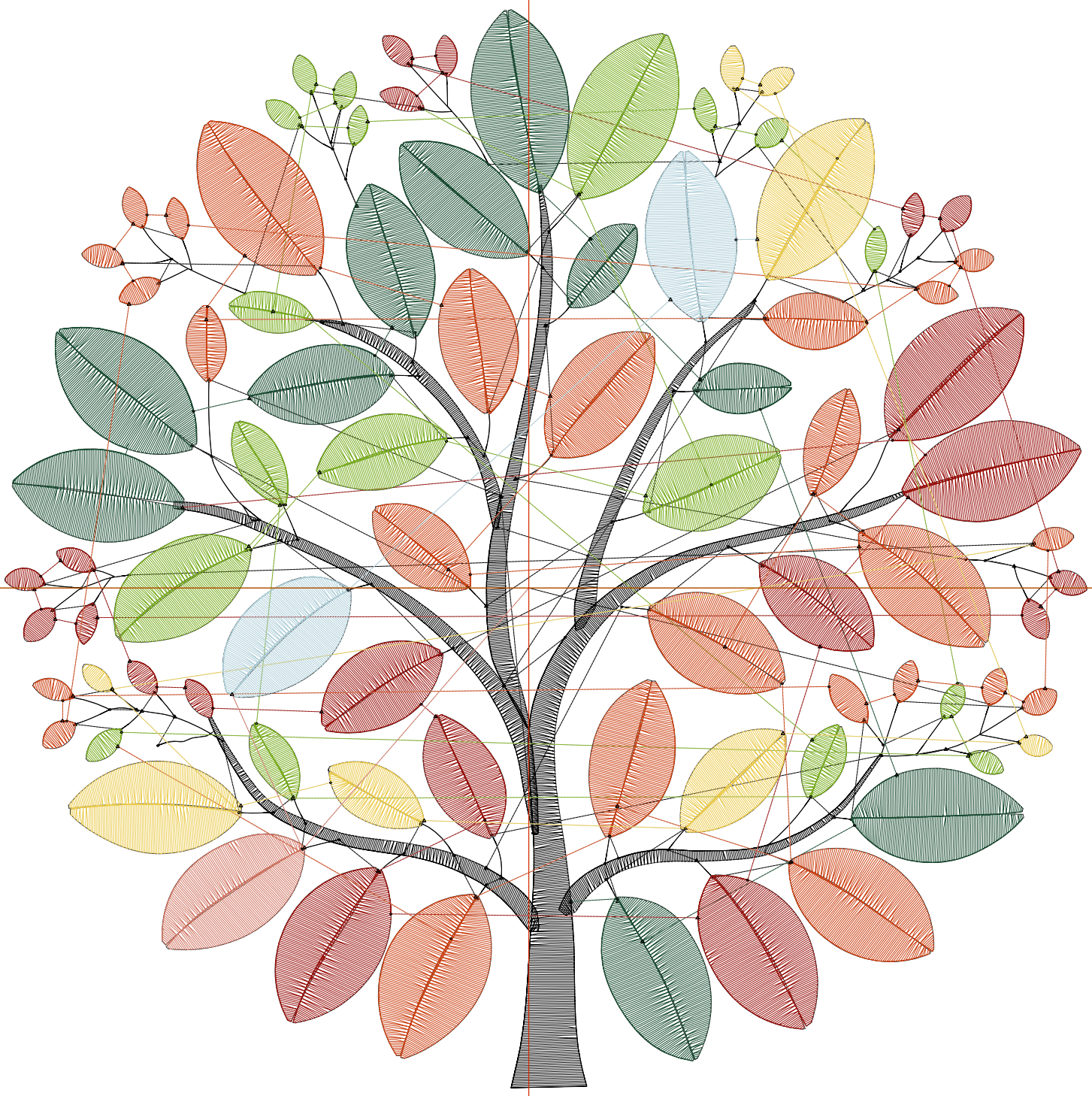
Wilcom EmbroideryStudio - Designing



Design: **7**

Title:

Stitches: 34,562
Height: 7.47 in
Width: 7.49 in
Colors: 8
Colorway: Colorway 1
Zoom: 1:1



Production Worksheet

Wilcom EmbroideryStudio - Designing



Design: **7**

Title:

Stitches: 34,562
 Height: 7.47 in
 Width: 7.49 in
 Colors: 8
 Colorway: Colorway 1
 Zoom: 1:1

Machine format: Tajima
 Color changes: 7
 Stops: 8
 Trims: 161
 Appliqués: 0
 Left: 92.1 mm
 Right: 98.2 mm
 Up: 101.7 mm
 Down: 88.0 mm
 EndX: 0.00 in
 EndY: 0.00 in
 Area 55.96 in²
 Max stitch: 8.2 mm
 Min stitch: 0.0 mm
 Max jump: 6.9 mm
 Total thread: 490.57ft
 Total bobbin: 154.76ft

Stop Sequence:

#	N#	Color	St.	Code	Name	Chart
1.	8		6,261	8	Black	Default
2.	1		6,005		R25 G77 B50	
3.	2		5,555		R153 G19 B14	
4.	3		4,413		R121 G173 B30	
5.	5		7,654		R204 G66 B20	
6.	6		2,616		R235 G203 B77	
7.	4		1,372		R174 G207 B217	
8.	7		684		R209 G117 B99	