

# Production Worksheet

Wilcom EmbroideryStudio - Designing



Design: **3**

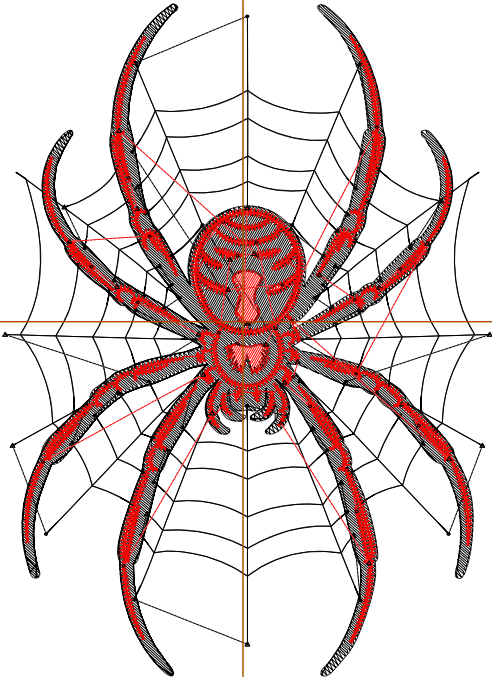
Title:

Stitches: 8,944  
 Height: 3.50 in  
 Width: 2.52 in  
 Colors: 2  
 Colorway: Colorway 1  
 Zoom: 1:1

Machine format: Tajima  
 Color changes: 1  
 Stops: 2  
 Trims: 75  
 Appliqués: 0  
 Left: 31.5 mm  
 Right: 32.6 mm  
 Up: 42.0 mm  
 Down: 46.8 mm  
 EndX: 0.00 in  
 EndY: 0.00 in  
 Area: 8.82 in<sup>2</sup>  
 Max stitch: 5.8 mm  
 Min stitch: 0.0 mm  
 Max jump: 5.8 mm  
 Total thread: 106.51ft  
 Total bobbin: 27.95ft

Stop Sequence:

#	N#	Color	St.	Code	Name	Chart
1.	8	<span style="background-color: black; color: black;">████</span>	4,823	8	Black	Default
2.	3	<span style="background-color: red; color: red;">████</span>	4,119	3	Red	Default



# Production Worksheet

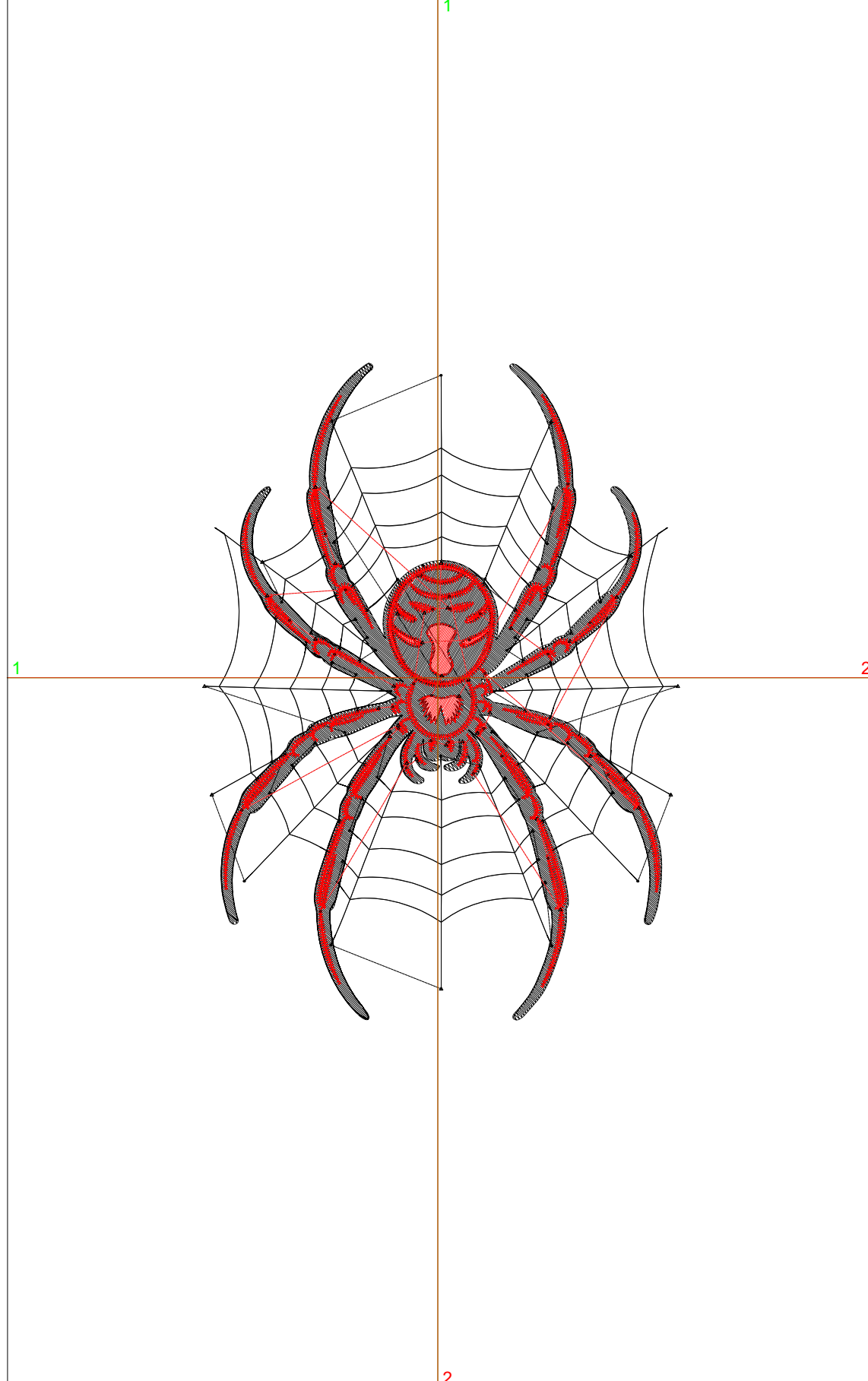
Wilcom EmbroideryStudio - Designing



Design: **4**

Title:

Stitches: 11,596  
Height: 4.50 in  
Width: 3.24 in  
Colors: 2  
Colorway: Colorway 1  
Zoom: 1:1



Machine format: Tajima  
Color changes: 1  
Stops: 2  
Trims: 83  
Appliqués: 0  
Left: 40.6 mm  
Right: 41.8 mm  
Up: 54.7 mm  
Down: 59.6 mm  
EndX: 0.00 in  
EndY: 0.00 in  
Area: 14.59 in<sup>2</sup>  
Max stitch: 6.8 mm  
Min stitch: 0.0 mm  
Max jump: 6.8 mm  
Total thread: 145.33ft  
Total bobbin: 40.64ft

Stop Sequence:

#	N#	Color	St.	Code	Name	Chart
1.	8	Black	6,413	8	Black	Default
2.	3	Red	5,181	3	Red	Default

# Production Worksheet

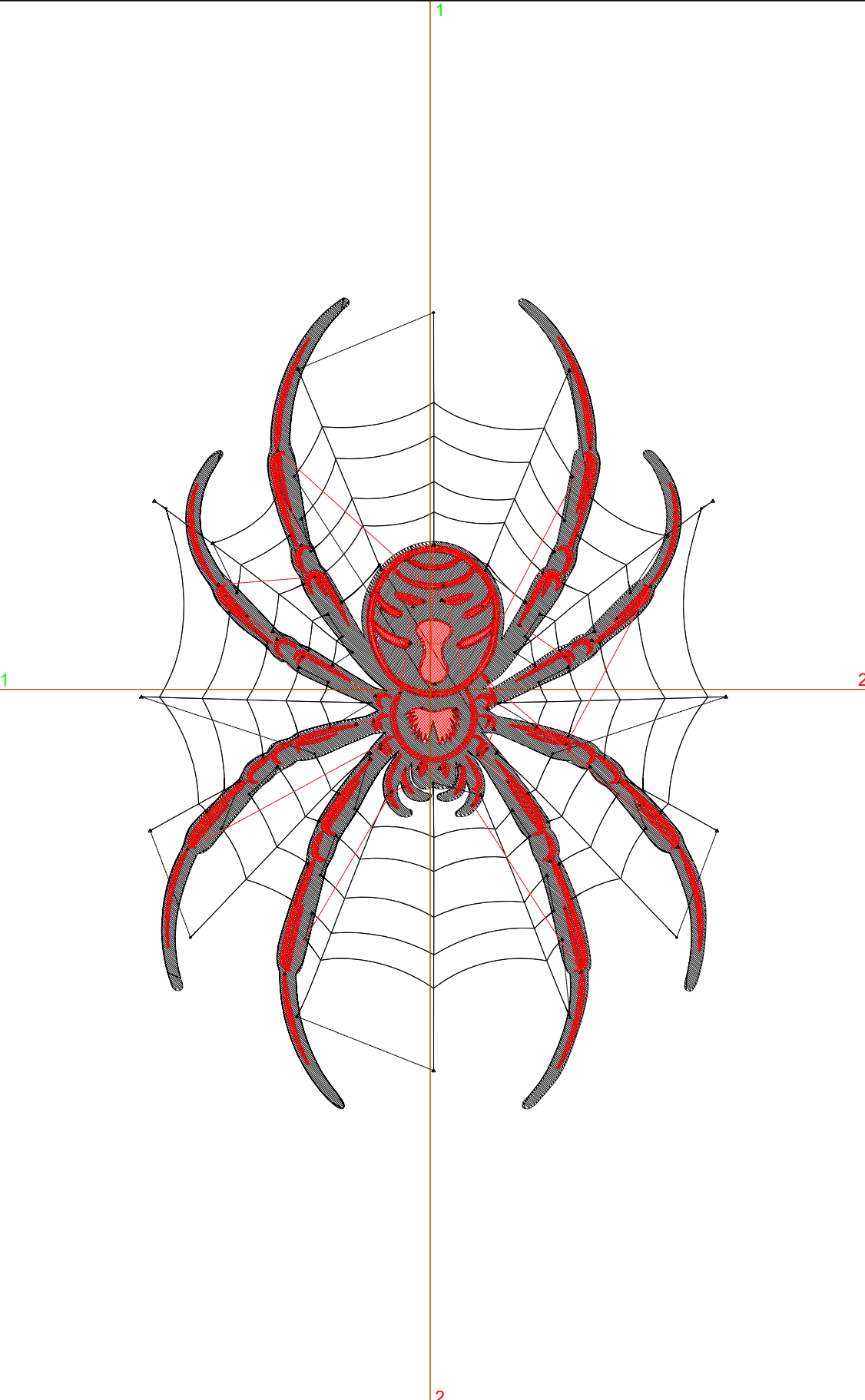
Wilcom EmbroideryStudio - Designing



Design: **5**

Title:

Stitches: 14,370  
 Height: 5.50 in  
 Width: 3.96 in  
 Colors: 2  
 Colorway: Colorway 1  
 Zoom: 1:1



Machine format: Tajima  
 Color changes: 1  
 Stops: 2  
 Trims: 87  
 Appliqués: 0  
 Left: 49.8 mm  
 Right: 50.9 mm  
 Up: 67.4 mm  
 Down: 72.2 mm  
 EndX: 0.00 in  
 EndY: 0.00 in  
 Area: 21.80 in<sup>2</sup>  
 Max stitch: 6.8 mm  
 Min stitch: 0.0 mm  
 Max jump: 6.8 mm  
 Total thread: 189.30ft  
 Total bobbin: 55.91ft

Stop Sequence:

#	N#	Color	St.	Code	Name	Chart
1.	8	<span style="display:inline-block; width:15px; height:15px; background-color:black;"></span>	8,160	8	Black	Default
2.	3	<span style="display:inline-block; width:15px; height:15px; background-color:red;"></span>	6,208	3	Red	Default

# Production Worksheet

Wilcom EmbroideryStudio - Designing



Design: **6**

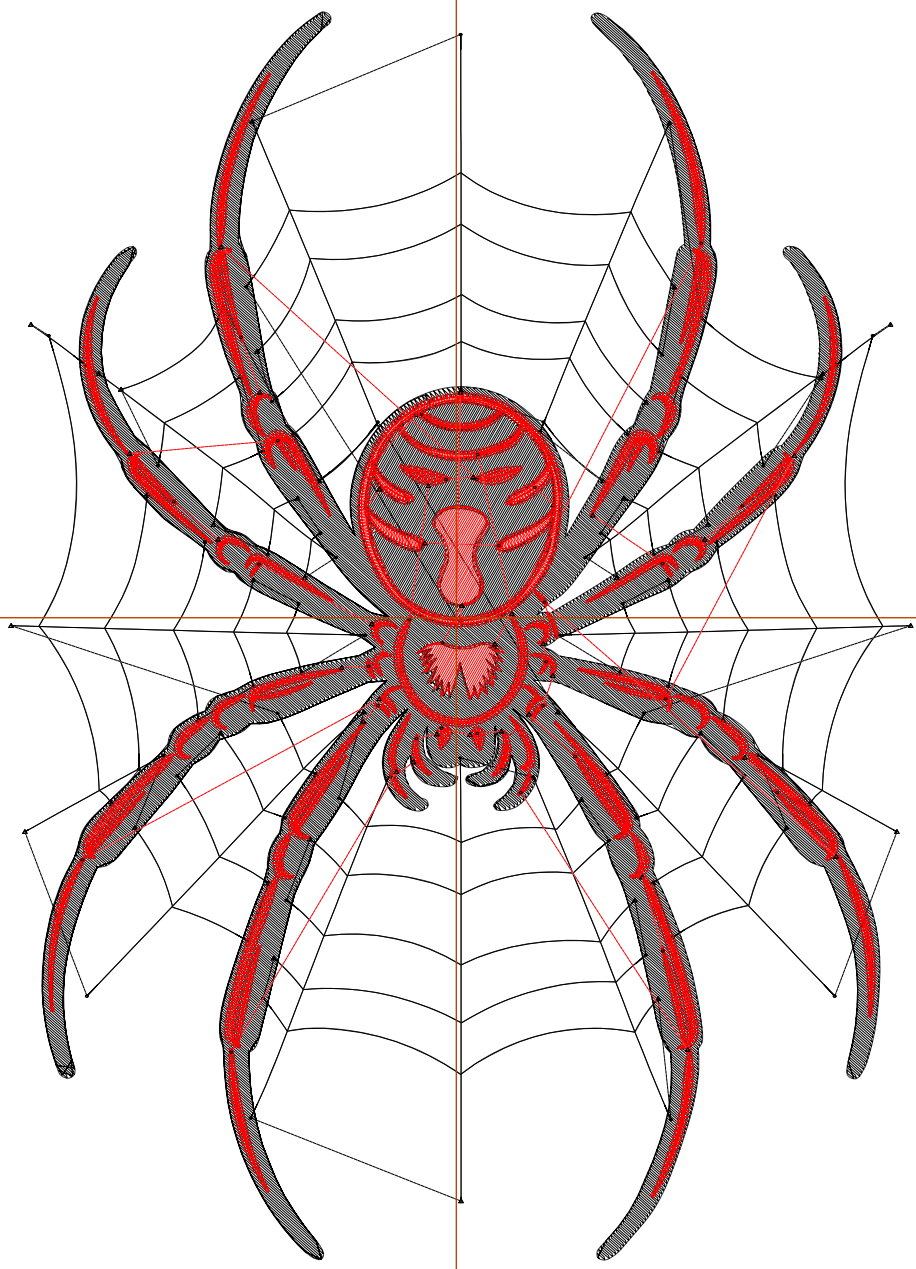
Title:

Stitches: 17,424  
 Height: 6.50 in  
 Width: 4.68 in  
 Colors: 2  
 Colorway: Colorway 1  
 Zoom: 1:1

Machine format: Tajima  
 Color changes: 1  
 Stops: 2  
 Trims: 89  
 Appliqués: 0  
 Left: 58.9 mm  
 Right: 60.1 mm  
 Up: 80.1 mm  
 Down: 84.9 mm  
 EndX: 0.00 in  
 EndY: 0.00 in  
 Area: 30.44 in<sup>2</sup>  
 Max stitch: 7.0 mm  
 Min stitch: 0.0 mm  
 Max jump: 7.0 mm  
 Total thread: 240.31ft  
 Total bobbin: 74.27ft

Stop Sequence:

#	N#	Color	St.	Code	Name	Chart
1.	8		10,191	8	Black	Default
2.	3		7,231	3	Red	Default



# Production Worksheet

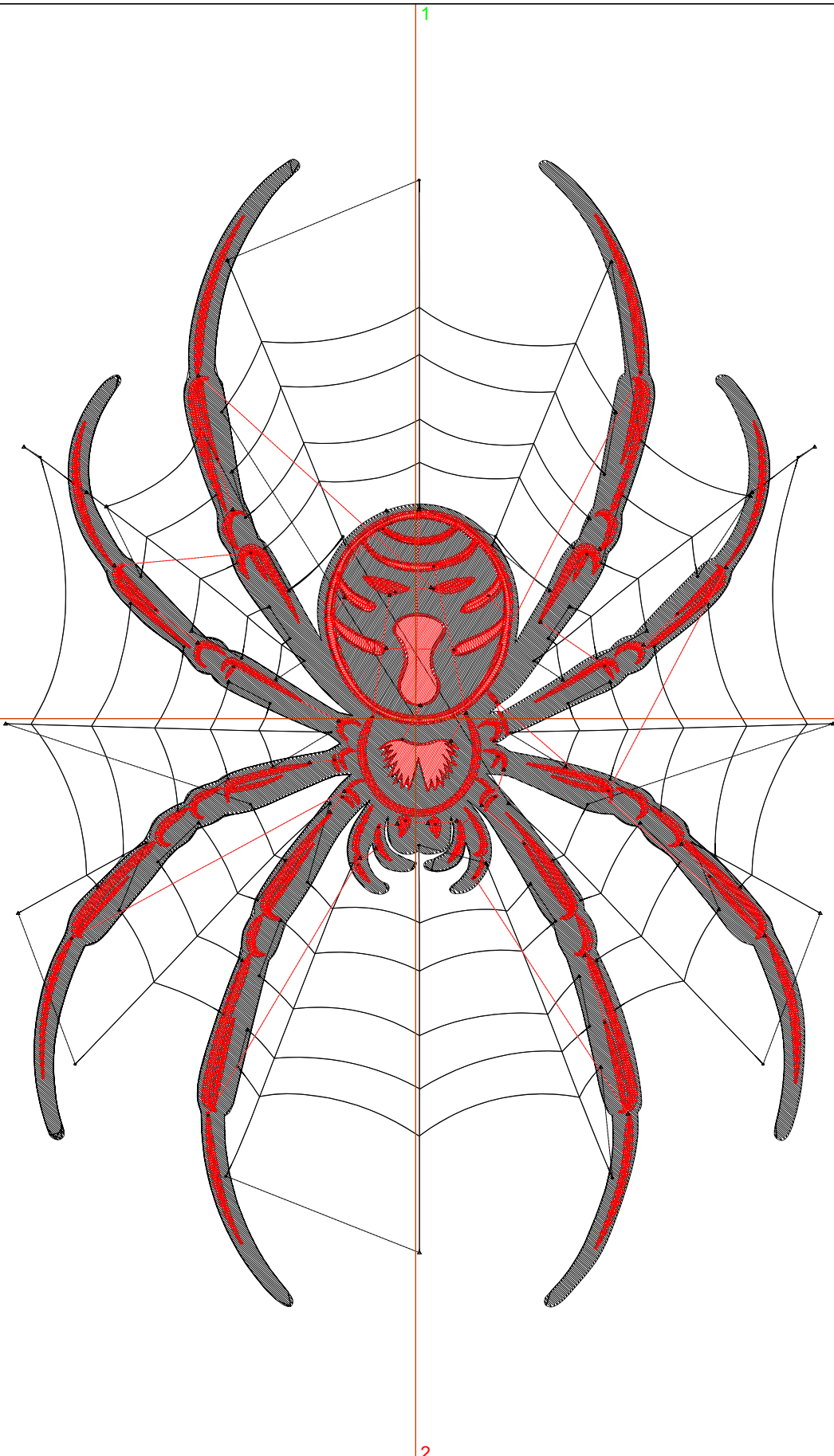
Wilcom EmbroideryStudio - Designing



Design: **7**

Title:

Stitches: 20,567  
Height: 7.50 in  
Width: 5.41 in  
Colors: 2  
Colorway: Colorway 1  
Zoom: 1:1



Machine format: Tajima  
Color changes: 1  
Stops: 2  
Trims: 91  
Appliqués: 0  
Left: 68.1 mm  
Right: 69.2 mm  
Up: 92.8 mm  
Down: 97.6 mm  
EndX: 0.00 in  
EndY: 0.00 in  
Area: 40.53 in<sup>2</sup>  
Max stitch: 6.8 mm  
Min stitch: 0.0 mm  
Max jump: 6.9 mm  
Total thread: 294.20ft  
Total bobbin: 93.98ft

Stop Sequence:

#	N#	Color	St.	Code	Name	Chart
1.	8	Black	12,255	8	Black	Default
2.	3	Red	8,310	3	Red	Default