

Production Worksheet

Wilcom EmbroideryStudio - Designing



Design: **3**

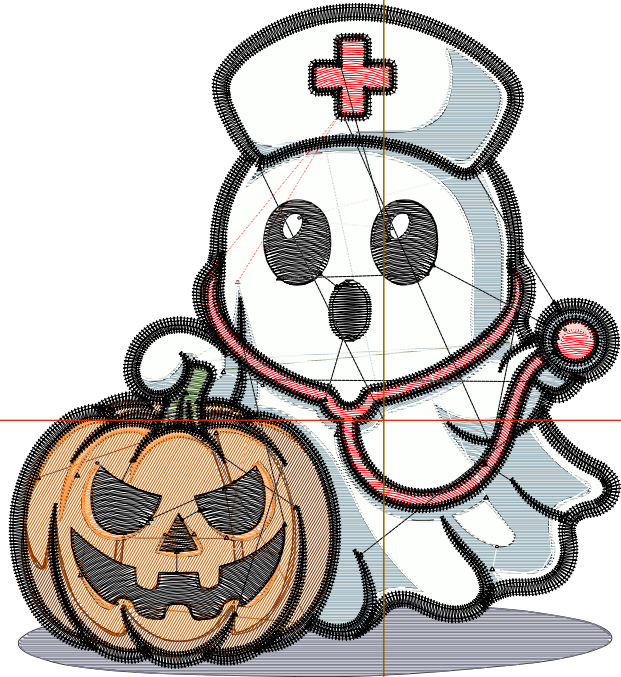
Title:

Stitches: 20,027
Height: 3.50 in
Width: 3.19 in
Colors: 10
Colorway: Colorway 1
Zoom: 1:1

Machine format: Tajima
Color changes: 9
Stops: 10
Trims: 57
Appliqués: 0
Left: 49.6 mm
Right: 31.3 mm
Up: 55.2 mm
Down: 33.7 mm
EndX: 0.00 in
EndY: 0.00 in
Area 11.14 in²
Max stitch: 6.9 mm
Min stitch: 0.0 mm
Max jump: 6.9 mm
Total thread: 282.64ft
Total bobbin: 87.67ft

Stop Sequence:

#	N#	Color	St.	Code	Name	Chart
1.	1		3,009		R150 G175 B184	
2.	2		1,122		R255 G1 B6	
3.	4		67		R255 G214 B209	
4.	3		148		R75 G110 B50	
5.	8		696		R123 G124 B143	
6.	9		1,222		R214 G97 B1	
7.	5		907		R138 G56 B1	
8.	7		1,020		R255 G159 B81	
9.	11		4,454		R253 G255 B252	
10.	10		7,380		R0 G0 B0	



Production Worksheet

Wilcom EmbroideryStudio - Designing



Design: **4**

Title:

Stitches: 27,804
 Height: 4.50 in
 Width: 4.09 in
 Colors: 10
 Colorway: Colorway 1
 Zoom: 1:1

Machine format: Tajima
 Color changes: 9
 Stops: 10
 Trims: 58
 Appliqués: 0
 Left: 61.1 mm
 Right: 42.8 mm
 Up: 67.8 mm
 Down: 46.6 mm
 EndX: 0.00 in
 EndY: 0.00 in
 Area 18.43 in²
 Max stitch: 7.2 mm
 Min stitch: 0.0 mm
 Max jump: 7.0 mm
 Total thread: 420.38ft
 Total bobbin: 139.06ft

Stop Sequence:

#	N#	Color	St.	Code	Name	Chart
1.	1		4,292	R150	G175 B184	
2.	2		1,584	R255	G1 B6	
3.	4		75	R255	G214 B209	
4.	3		217	R75	G110 B50	
5.	8		1,079	R123	G124 B143	
6.	9		1,748	R214	G97 B1	
7.	5		1,231	R138	G56 B1	
8.	7		1,322	R255	G159 B81	
9.	11		6,558	R253	G255 B252	
10.	10		9,696	R0	G0 B0	



Production Worksheet

Wilcom EmbroideryStudio - Designing



Design: **5**

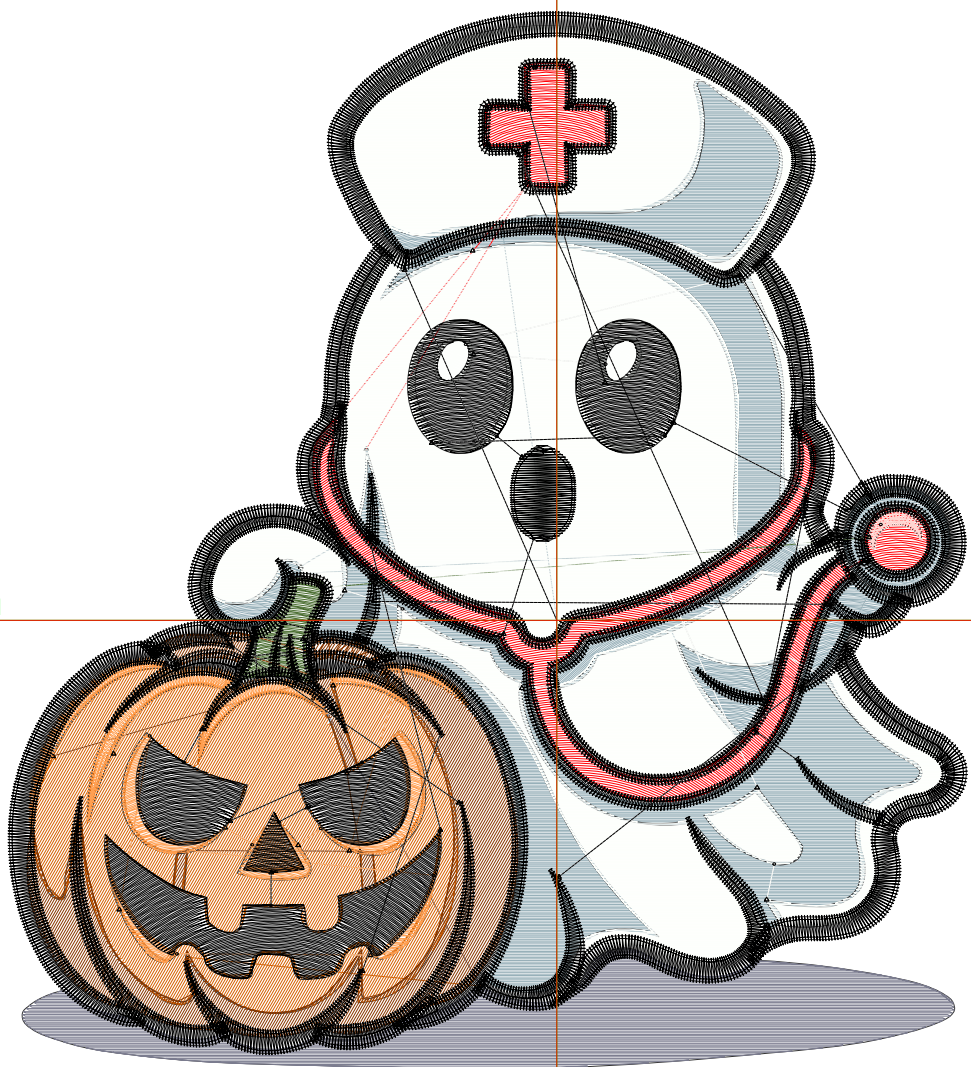
Title:

Stitches: 36,532
 Height: 5.50 in
 Width: 5.00 in
 Colors: 10
 Colorway: Colorway 1
 Zoom: 1:1

Machine format: Tajima
 Color changes: 9
 Stops: 10
 Trims: 60
 Appliqués: 0
 Left: 72.6 mm
 Right: 54.3 mm
 Up: 80.5 mm
 Down: 59.2 mm
 EndX: 0.00 in
 EndY: 0.00 in
 Area: 27.49 in²
 Max stitch: 8.9 mm
 Min stitch: 0.0 mm
 Max jump: 6.9 mm
 Total thread: 584.65ft
 Total bobbin: 202.47ft

Stop Sequence:

#	N#	Color	St.	Code	Name	Chart
1.	1		5,741	R150	G175 B184	
2.	2		2,087	R255	G1 B6	
3.	4		88	R255	G214 B209	
4.	3		292	R75	G110 B50	
5.	8		1,522	R123	G124 B143	
6.	9		2,307	R214	G97 B1	
7.	5		1,633	R138	G56 B1	
8.	7		1,701	R255	G159 B81	
9.	11		8,934	R253	G255 B252	
10.	10		12,225	R0	G0 B0	



Production Worksheet

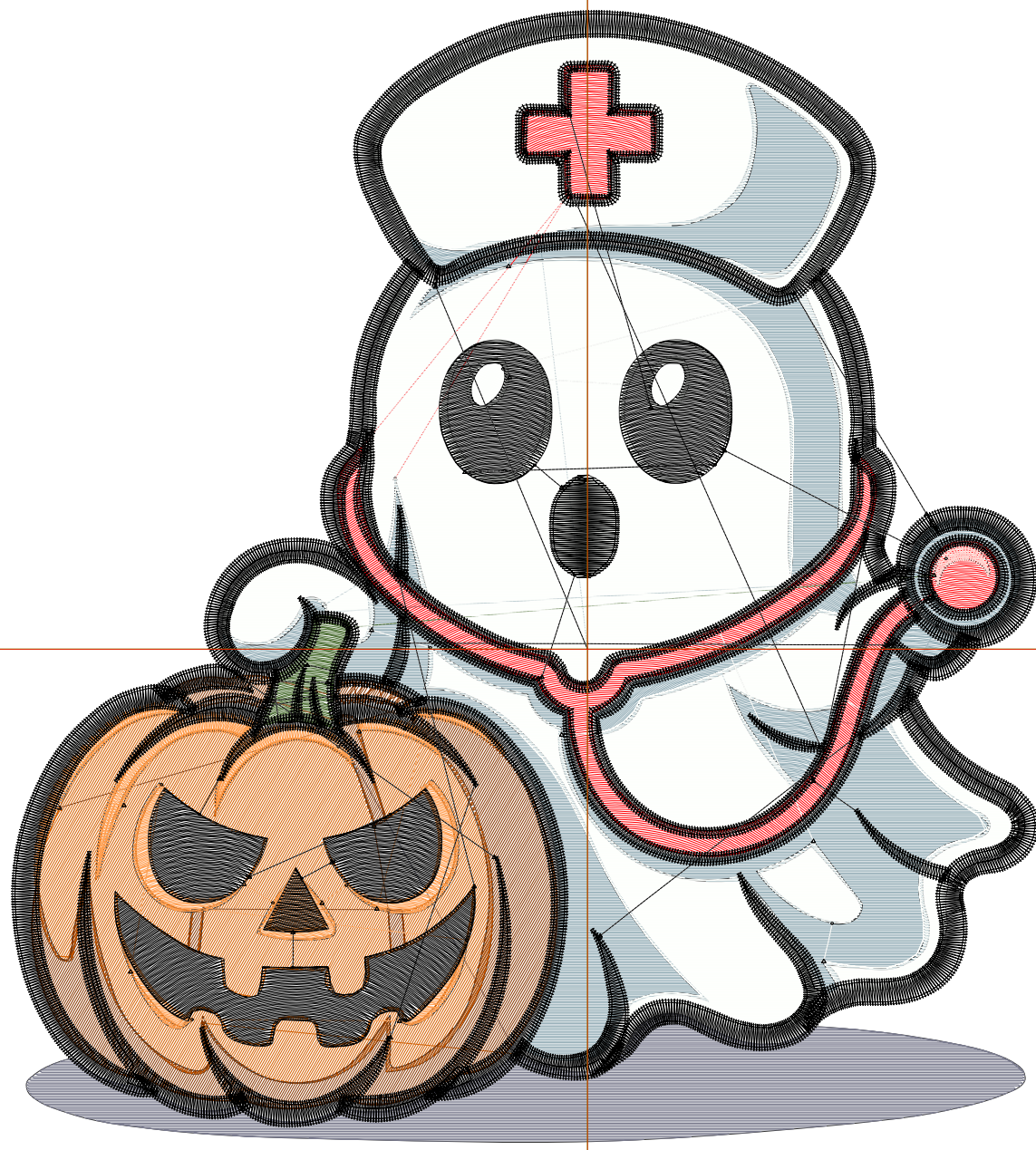
Wilcom EmbroideryStudio - Designing



Design: **6**

Title:

Stitches: 46,339
Height: 6.50 in
Width: 5.90 in
Colors: 10
Colorway: Colorway 1
Zoom: 1:1



Production Worksheet

Wilcom EmbroideryStudio - Designing



Design: **6**

Title:

Stitches: 46,339
 Height: 6.50 in
 Width: 5.90 in
 Colors: 10
 Colorway: Colorway 1
 Zoom: 1:1

Machine format: Tajima
 Color changes: 9
 Stops: 10
 Trims: 62
 Appliqués: 0
 Left: 84.1 mm
 Right: 65.9 mm
 Up: 93.2 mm
 Down: 71.8 mm
 EndX: 0.00 in
 EndY: 0.00 in
 Area 38.36 in²
 Max stitch: 10.6 mm
 Min stitch: 0.0 mm
 Max jump: 6.8 mm
 Total thread: 777.26ft
 Total bobbin: 278.47ft

Stop Sequence:

#	N#	Color	St.	Code	Name	Chart
1.	1		7,413		R150 G175 B184	
2.	2		2,665		R255 G1 B6	
3.	4		100		R255 G214 B209	
4.	3		384		R75 G110 B50	
5.	8		2,053		R123 G124 B143	
6.	9		2,995		R214 G97 B1	
7.	5		2,034		R138 G56 B1	
8.	7		2,078		R255 G159 B81	
9.	11		11,678		R253 G255 B252	
10.	10		14,937		R0 G0 B0	

Production Worksheet

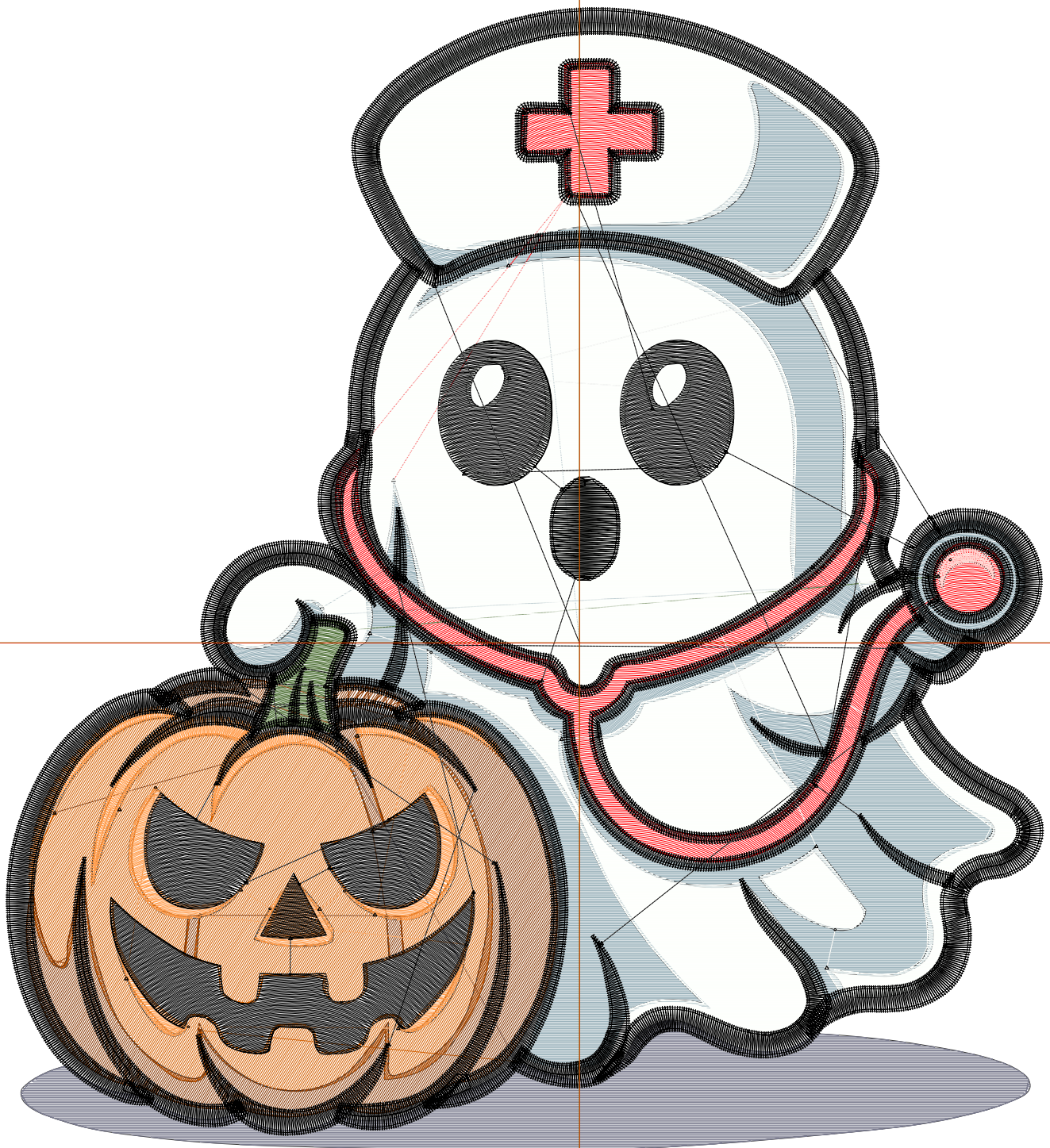
Wilcom EmbroideryStudio - Designing



Design: 7

Title:

Stitches: 57,106
Height: 7.50 in
Width: 6.81 in
Colors: 10
Colorway: Colorway 1
Zoom: 1:1



Production Worksheet

Wilcom EmbroideryStudio - Designing



Design: **7**

Title:

Stitches: 57,106
 Height: 7.50 in
 Width: 6.81 in
 Colors: 10
 Colorway: Colorway 1
 Zoom: 1:1

Machine format: Tajima
 Color changes: 9
 Stops: 10
 Trims: 62
 Appliqués: 0
 Left: 95.6 mm
 Right: 77.4 mm
 Up: 105.9 mm
 Down: 84.7 mm
 EndX: 0.00 in
 EndY: 0.00 in
 Area 51.10 in²
 Max stitch: 11.8 mm
 Min stitch: 0.0 mm
 Max jump: 7.0 mm
 Total thread: 997.25ft
 Total bobbin: 366.97ft

Stop Sequence:

#	N#	Color	St.	Code	Name	Chart
1.	1		9,230		R150 G175 B184	
2.	2		3,281		R255 G1 B6	
3.	4		114		R255 G214 B209	
4.	3		488		R75 G110 B50	
5.	8		2,666		R123 G124 B143	
6.	9		3,678		R214 G97 B1	
7.	5		2,505		R138 G56 B1	
8.	7		2,495		R255 G159 B81	
9.	11		14,813		R253 G255 B252	
10.	10		17,834		R0 G0 B0	