

# Production Worksheet

Wilcom EmbroideryStudio - Designing



Design: **3**

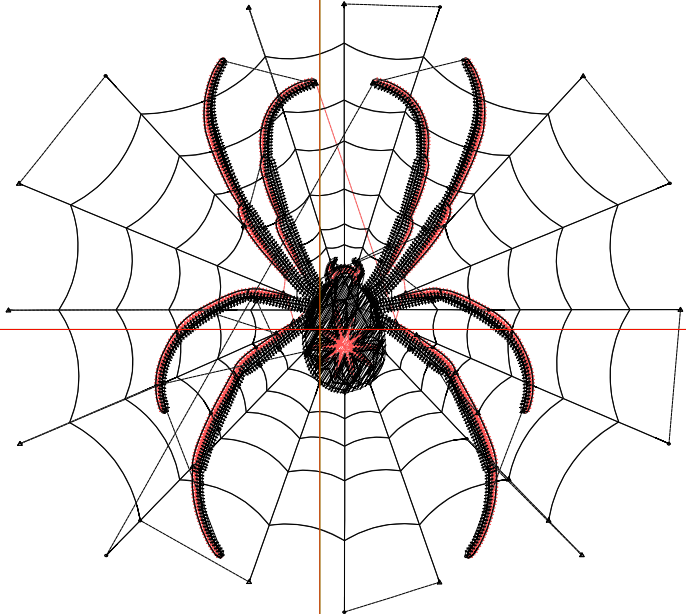
Title:

Stitches: 5,897  
 Height: 3.17 in  
 Width: 3.50 in  
 Colors: 2  
 Colorway: Colorway 1  
 Zoom: 1:1

Machine format: Tajima  
 Color changes: 1  
 Stops: 2  
 Trims: 49  
 Appliqués: 0  
 Left: 41.2 mm  
 Right: 47.7 mm  
 Up: 43.0 mm  
 Down: 37.4 mm  
 EndX: 0.00 in  
 EndY: 0.00 in  
 Area: 11.08 in<sup>2</sup>  
 Max stitch: 6.9 mm  
 Min stitch: 0.0 mm  
 Max jump: 6.9 mm  
 Total thread: 75.51ft  
 Total bobbin: 21.43ft

Stop Sequence:

#	N#	Color	St.	Code	Name	Chart
1.	3	<span style="display:inline-block; width:15px; height:15px; background-color:red;"></span>	2,007	3	Red	Default
2.	8	<span style="display:inline-block; width:15px; height:15px; background-color:black;"></span>	3,888	8	Black	Default



# Production Worksheet

Wilcom EmbroideryStudio - Designing



Design: **4**

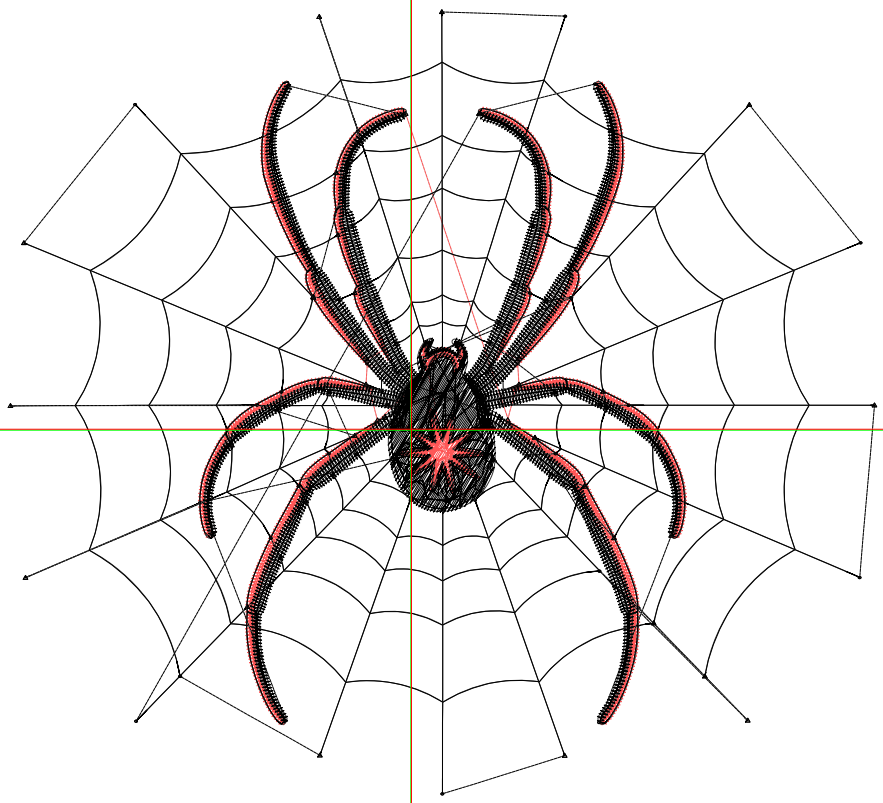
Title:

Stitches: 7,471  
 Height: 4.07 in  
 Width: 4.50 in  
 Colors: 2  
 Colorway: Colorway 1  
 Zoom: 1:1

Machine format: Tajima  
 Color changes: 1  
 Stops: 2  
 Trims: 63  
 Appliqués: 0  
 Left: 52.9 mm  
 Right: 61.4 mm  
 Up: 55.3 mm  
 Down: 48.1 mm  
 EndX: 0.00 in  
 EndY: 0.01 in  
 Area: 18.32 in<sup>2</sup>  
 Max stitch: 6.8 mm  
 Min stitch: 0.0 mm  
 Max jump: 6.8 mm  
 Total thread: 101.38ft  
 Total bobbin: 30.64ft

Stop Sequence:

#	N#	Color	St.	Code	Name	Chart
1.	3	<span style="display:inline-block; width:15px; height:15px; background-color:red;"></span>	2,588	3	Red	Default
2.	8	<span style="display:inline-block; width:15px; height:15px; background-color:black;"></span>	4,881	8	Black	Default



# Production Worksheet

Wilcom EmbroideryStudio - Designing



Design: **5**

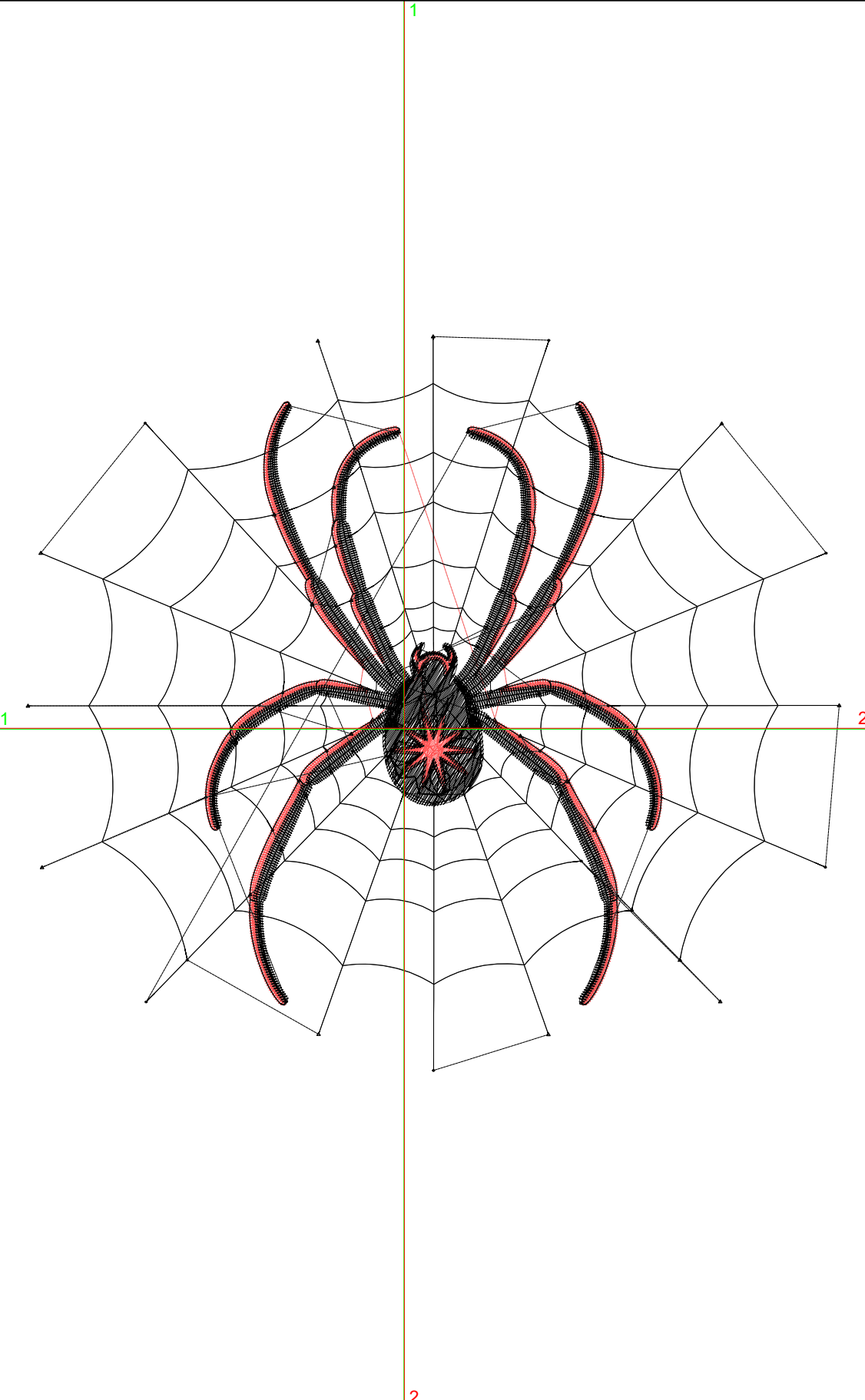
Title:

Stitches: 9,052  
 Height: 4.98 in  
 Width: 5.50 in  
 Colors: 2  
 Colorway: Colorway 1  
 Zoom: 1:1

Machine format: Tajima  
 Color changes: 1  
 Stops: 2  
 Trims: 68  
 Appliqués: 0  
 Left: 64.7 mm  
 Right: 75.0 mm  
 Up: 67.6 mm  
 Down: 58.8 mm  
 EndX: 0.00 in  
 EndY: 0.01 in  
 Area: 27.37 in<sup>2</sup>  
 Max stitch: 7.0 mm  
 Min stitch: 0.1 mm  
 Max jump: 7.0 mm  
 Total thread: 129.74ft  
 Total bobbin: 41.30ft

Stop Sequence:

#	N#	Color	St.	Code	Name	Chart
1.	3	<span style="display:inline-block; width:15px; height:15px; background-color:red;"></span>	3,146	3	Red	Default
2.	8	<span style="display:inline-block; width:15px; height:15px; background-color:black;"></span>	5,904	8	Black	Default



# Production Worksheet

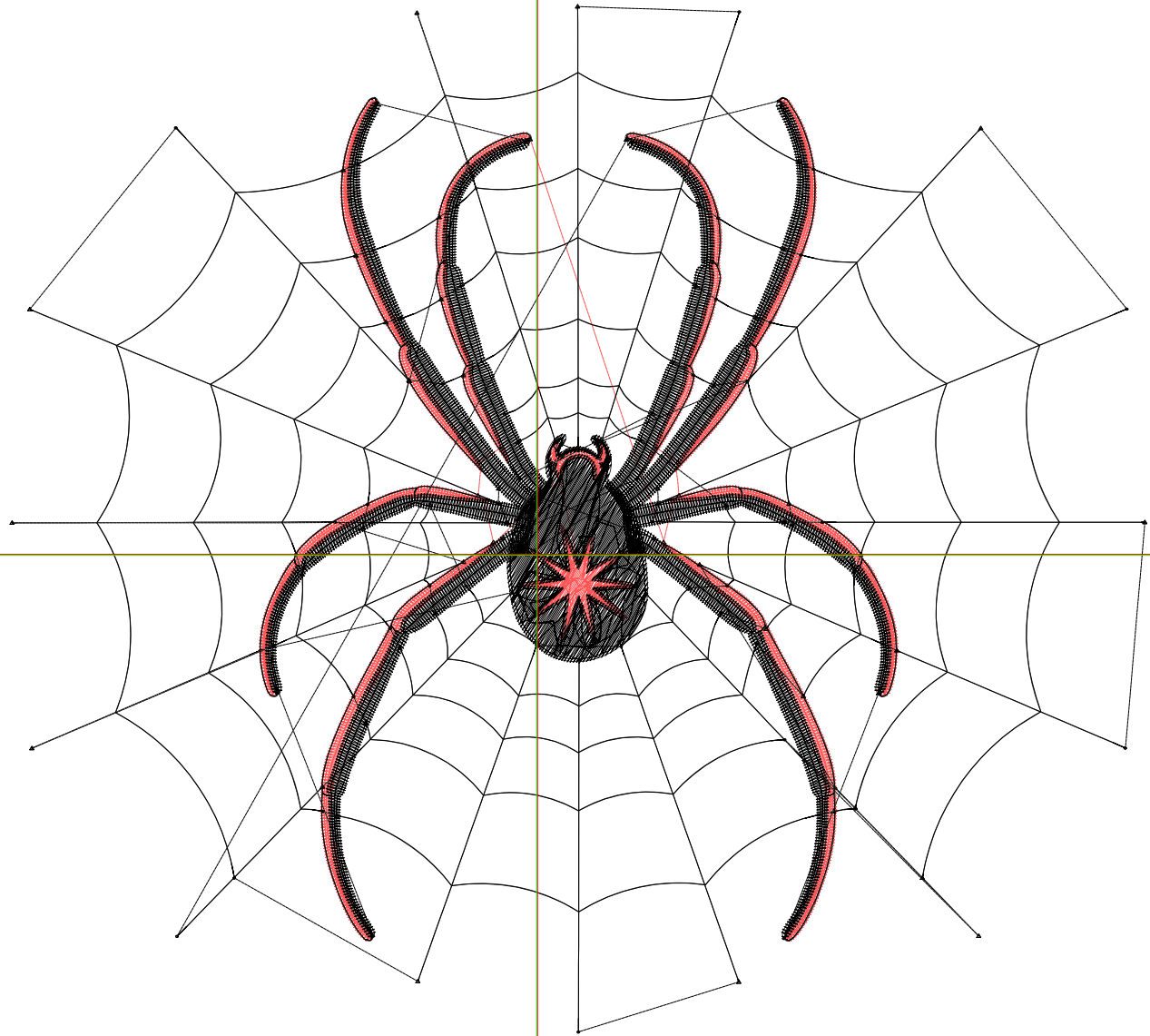
Wilcom EmbroideryStudio - Designing



Design: **6**

Title:

Stitches: 10,716  
Height: 5.88 in  
Width: 6.50 in  
Colors: 2  
Colorway: Colorway 1  
Zoom: 1:1



# Production Worksheet

Wilcom EmbroideryStudio - Designing



Design: **6**

Title:

Stitches: 10,716  
 Height: 5.88 in  
 Width: 6.50 in  
 Colors: 2  
 Colorway: Colorway 1  
 Zoom: 1:1

Machine format: Tajima  
 Color changes: 1  
 Stops: 2  
 Trims: 76  
 Appliqués: 0  
 Left: 76.5 mm  
 Right: 88.6 mm  
 Up: 79.9 mm  
 Down: 69.5 mm  
 EndX: 0.00 in  
 EndY: 0.01 in  
 Area 38.23 in<sup>2</sup>  
 Max stitch: 6.8 mm  
 Min stitch: 0.1 mm  
 Max jump: 6.8 mm  
 Total thread: 161.56ft  
 Total bobbin: 53.68ft

Stop Sequence:

#	N#	Color	St.	Code	Name	Chart
1.	3		3,714	3	Red	Default
2.	8		7,000	8	Black	Default

# Production Worksheet

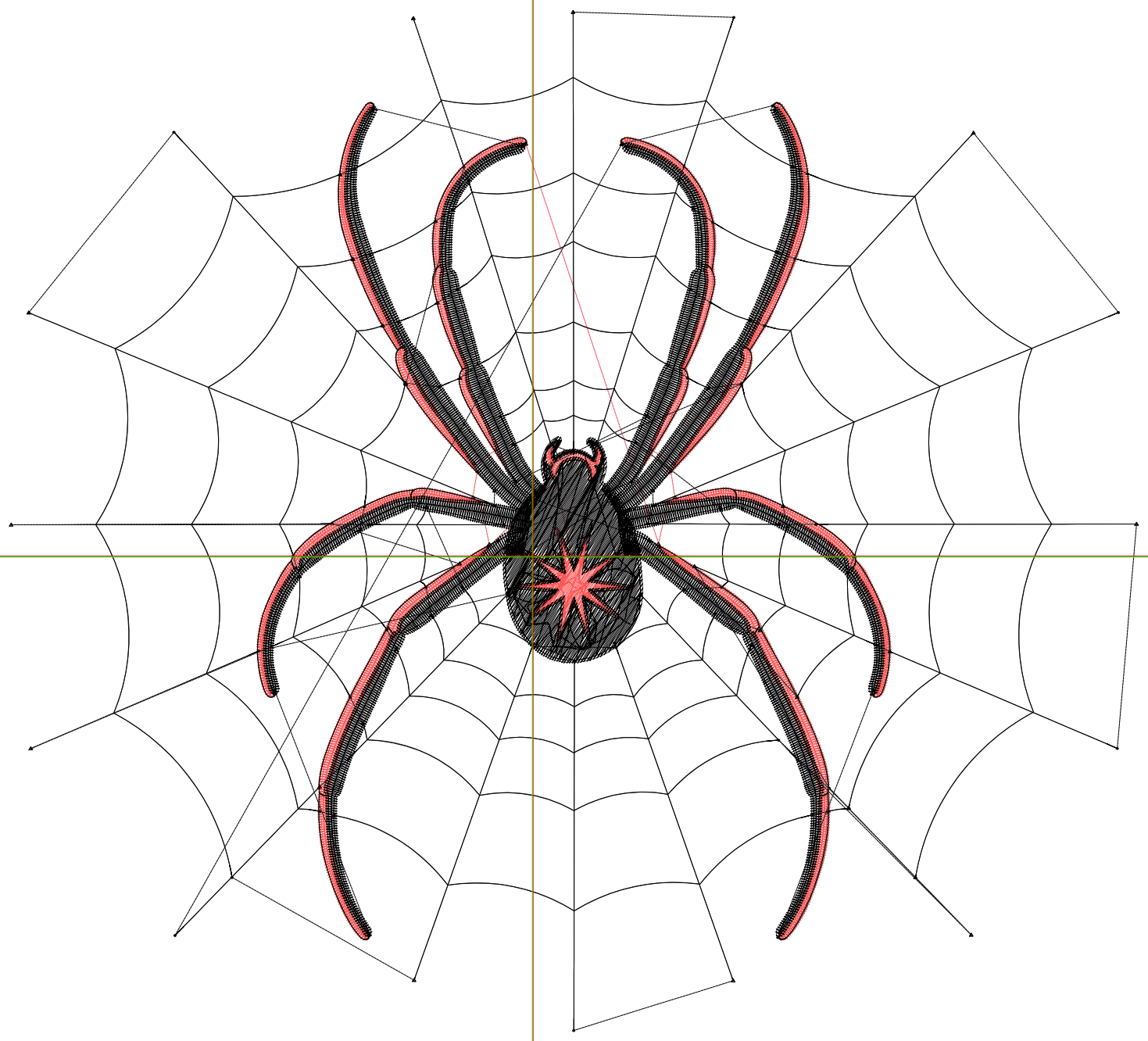
Wilcom EmbroideryStudio - Designing



Design: **7**

Title:

Stitches: 12,369  
Height: 6.79 in  
Width: 7.50 in  
Colors: 2  
Colorway: Colorway 1  
Zoom: 1:1



# Production Worksheet

Wilcom EmbroideryStudio - Designing



Design: **7**

Title:

Stitches: 12,369  
 Height: 6.79 in  
 Width: 7.50 in  
 Colors: 2  
 Colorway: Colorway 1  
 Zoom: 1:1

Machine format: Tajima  
 Color changes: 1  
 Stops: 2  
 Trims: 78  
 Appliqués: 0  
 Left: 88.2 mm  
 Right: 102.3 mm  
 Up: 92.2 mm  
 Down: 80.2 mm  
 EndX: 0.00 in  
 EndY: 0.01 in  
 Area 50.90 in<sup>2</sup>  
 Max stitch: 6.9 mm  
 Min stitch: 0.0 mm  
 Max jump: 6.9 mm  
 Total thread: 195.90ft  
 Total bobbin: 67.61ft

Stop Sequence:

#	N#	Color	St.	Code	Name	Chart
1.	3		4,297	3	Red	Default
2.	8		8,070	8	Black	Default