

Production Worksheet

Wilcom EmbroideryStudio - Designing



Design: **3**

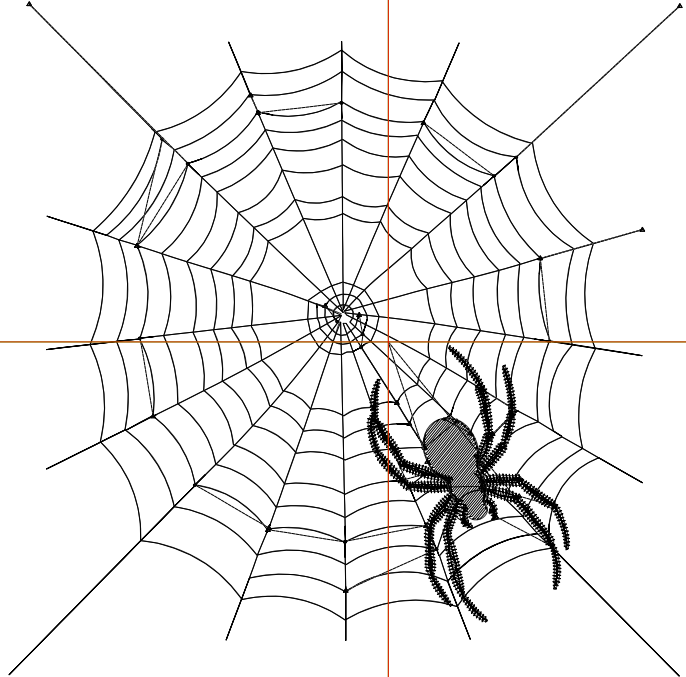
Title:

Stitches: 2,887
 Height: 3.50 in
 Width: 3.49 in
 Colors: 1
 Colorway: Colorway 1
 Zoom: 1:1

Machine format: Tajima
 Color changes: 0
 Stops: 1
 Trims: 33
 Appliqués: 0
 Left: 50.2 mm
 Right: 38.6 mm
 Up: 44.7 mm
 Down: 44.2 mm
 EndX: 0.00 in
 EndY: 0.00 in
 Area: 12.22 in²
 Max stitch: 6.5 mm
 Min stitch: 0.0 mm
 Max jump: 6.5 mm
 Total thread: 38.25ft
 Total bobbin: 11.24ft

Stop Sequence:

#	N#	Color	St.	Code	Name	Chart
1.	8	█	2,885	8	Black	Default



Production Worksheet

Wilcom EmbroideryStudio - Designing



Design: **4**

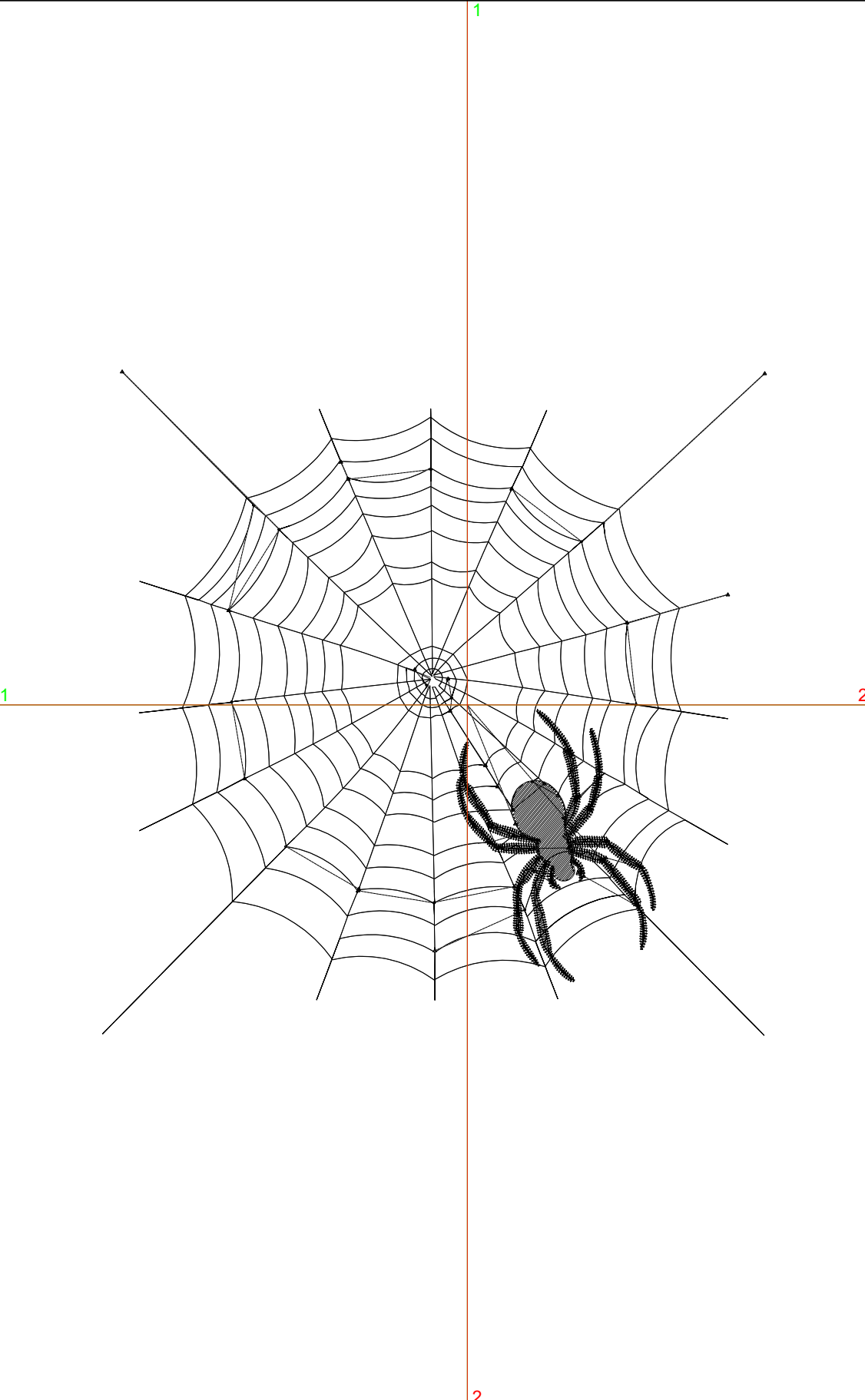
Title:

Stitches: 3,578
 Height: 4.50 in
 Width: 4.49 in
 Colors: 1
 Colorway: Colorway 1
 Zoom: 1:1

Machine format: Tajima
 Color changes: 0
 Stops: 1
 Trims: 35
 Appliqués: 0
 Left: 62.8 mm
 Right: 51.2 mm
 Up: 57.4 mm
 Down: 56.9 mm
 EndX: 0.00 in
 EndY: 0.00 in
 Area: 20.21 in²
 Max stitch: 7.0 mm
 Min stitch: 0.0 mm
 Max jump: 7.0 mm
 Total thread: 49.75ft
 Total bobbin: 15.37ft

Stop Sequence:

#	N#	Color	St.	Code	Name	Chart
1.	8	█	3,576	8	Black	Default



Production Worksheet

Wilcom EmbroideryStudio - Designing



Design: **5**

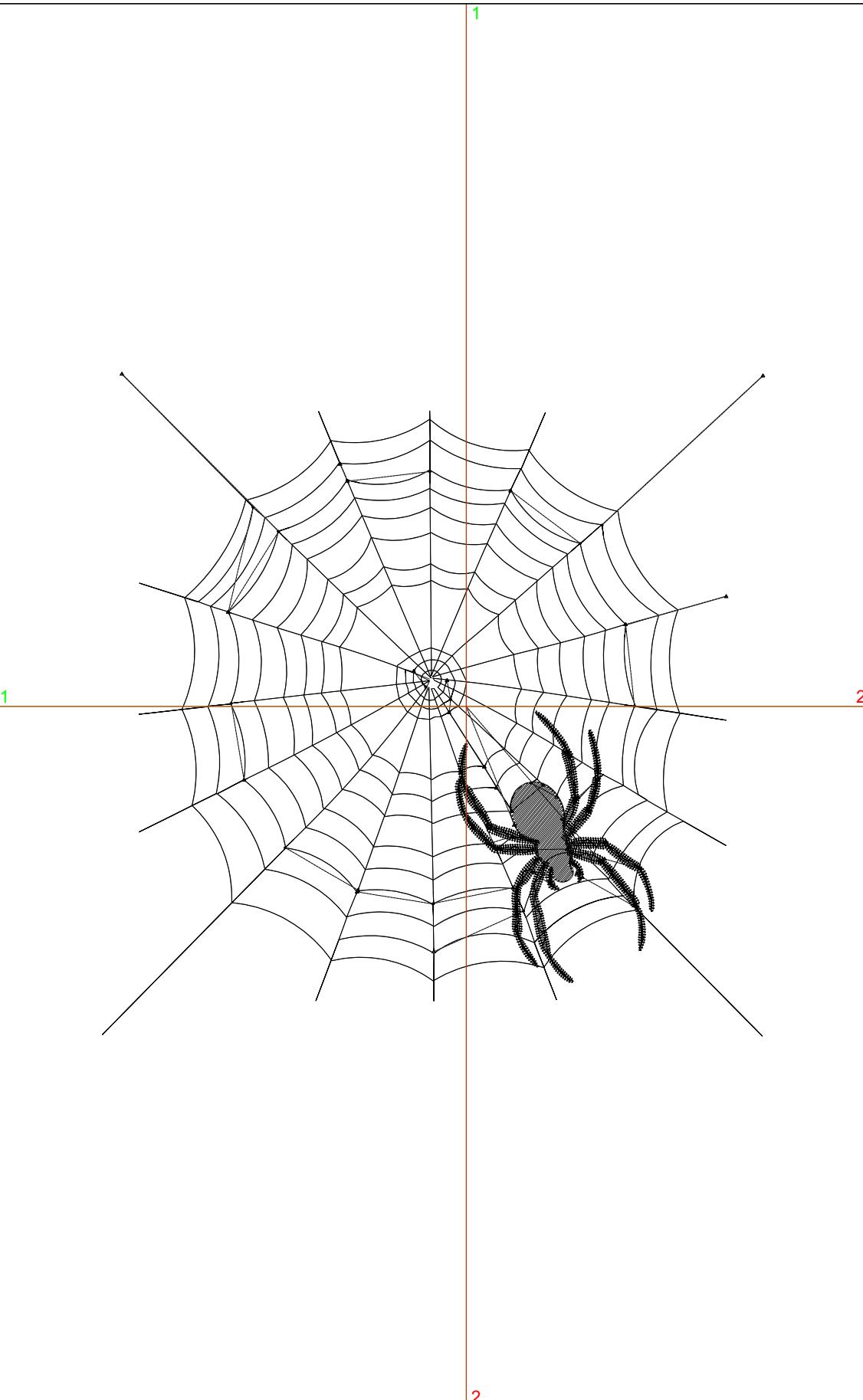
Title:

Stitches: 3,578
 Height: 4.50 in
 Width: 4.49 in
 Colors: 1
 Colorway: Colorway 1
 Zoom: 1:1

Machine format: Tajima
 Color changes: 0
 Stops: 1
 Trims: 35
 Appliqués: 0
 Left: 62.8 mm
 Right: 51.2 mm
 Up: 57.4 mm
 Down: 56.9 mm
 EndX: 0.00 in
 EndY: 0.00 in
 Area: 20.21 in²
 Max stitch: 7.0 mm
 Min stitch: 0.0 mm
 Max jump: 7.0 mm
 Total thread: 49.75ft
 Total bobbin: 15.37ft

Stop Sequence:

#	N#	Color	St.	Code	Name	Chart
1.	8	█	3,576	8	Black	Default



Production Worksheet

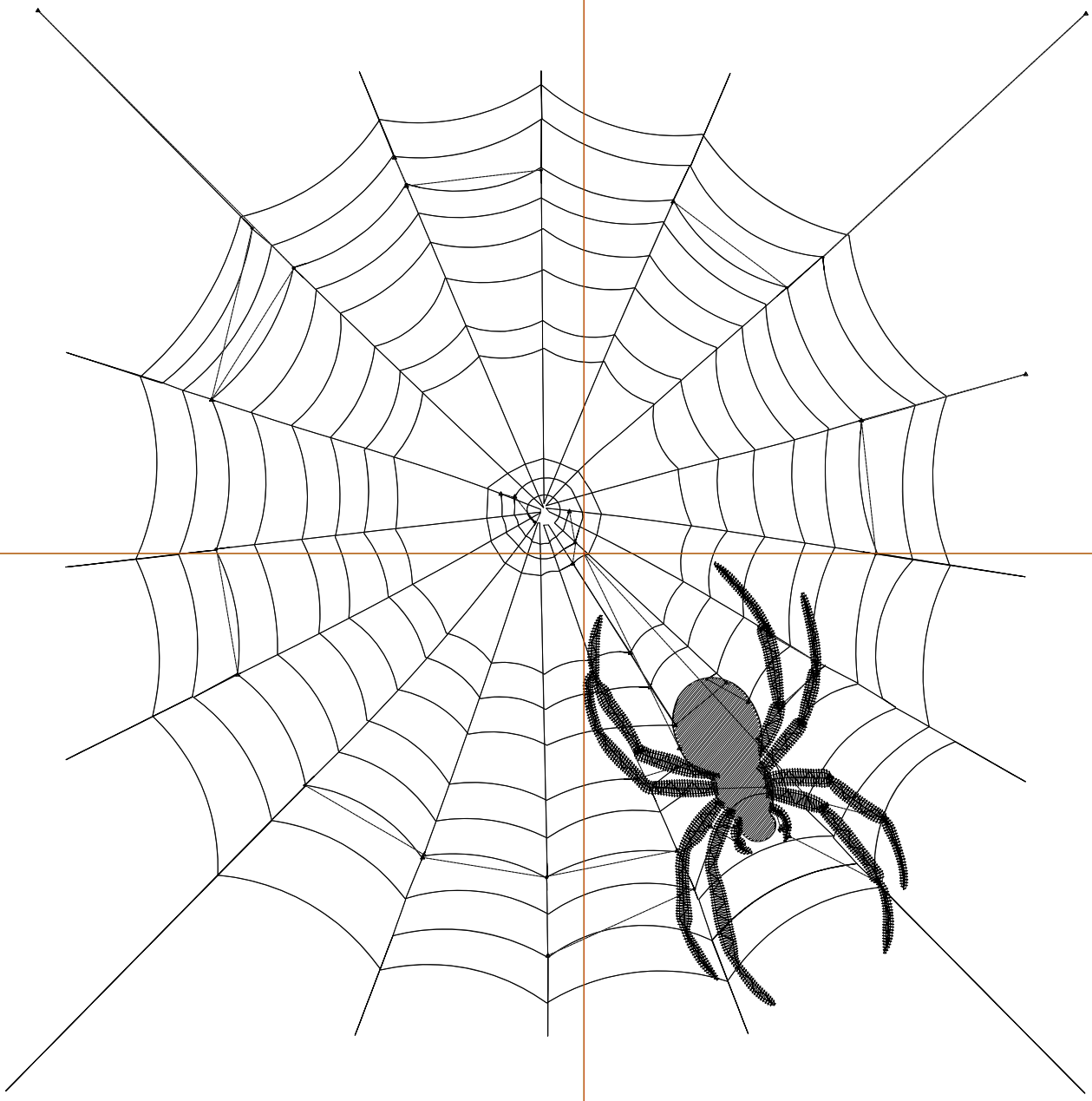
Wilcom EmbroideryStudio - Designing



Design: **6**

Title:

Stitches: 4,949
Height: 6.50 in
Width: 6.49 in
Colors: 1
Colorway: Colorway 1
Zoom: 1:1



Production Worksheet

Wilcom EmbroideryStudio - Designing



Design: **6**

Title:

Stitches: 4,949
 Height: 6.50 in
 Width: 6.49 in
 Colors: 1
 Colorway: Colorway 1
 Zoom: 1:1

Machine format: Tajima
 Color changes: 0
 Stops: 1
 Trims: 36
 Appliqués: 0
 Left: 88.2 mm
 Right: 76.6 mm
 Up: 82.8 mm
 Down: 82.3 mm
 EndX: 0.00 in
 EndY: 0.00 in
 Area 42.16 in²
 Max stitch: 6.9 mm
 Min stitch: 0.0 mm
 Max jump: 6.9 mm
 Total thread: 74.78ft
 Total bobbin: 24.87ft

Stop Sequence:

#	N#	Color	St.	Code	Name	Chart
1.	8	█	4,947	8	Black	Default

Production Worksheet

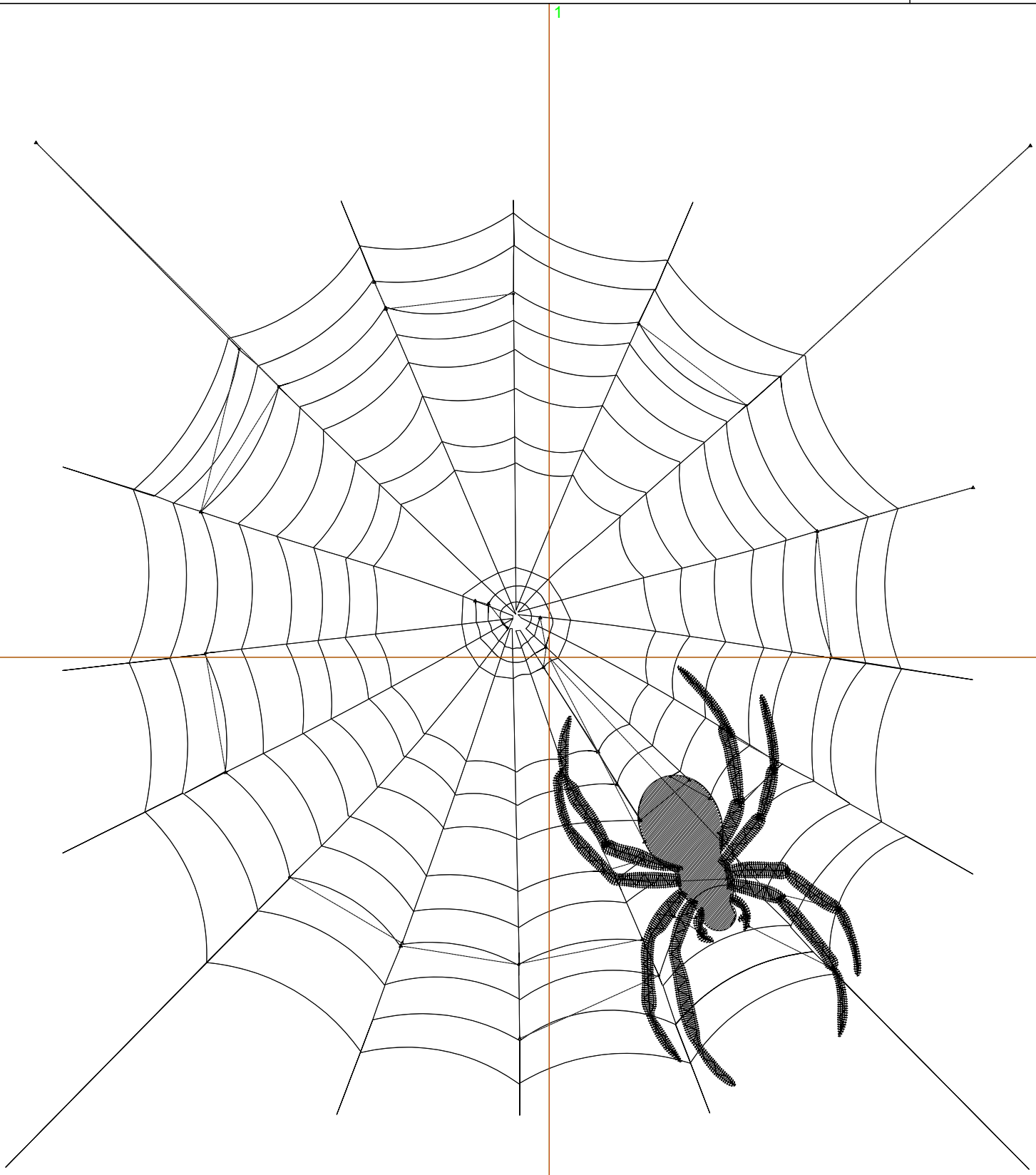
Wilcom EmbroideryStudio - Designing



Design: **7**

Title:

Stitches: 5,646
Height: 7.50 in
Width: 7.48 in
Colors: 1
Colorway: Colorway 1
Zoom: 1:1



Production Worksheet

Wilcom EmbroideryStudio - Designing



Design: **7**

Title:

Stitches: 5,646
 Height: 7.50 in
 Width: 7.48 in
 Colors: 1
 Colorway: Colorway 1
 Zoom: 1:1

Machine format: Tajima
 Color changes: 0
 Stops: 1
 Trims: 36
 Appliqués: 0
 Left: 100.8 mm
 Right: 89.3 mm
 Up: 95.5 mm
 Down: 95.0 mm
 EndX: 0.00 in
 EndY: 0.00 in
 Area 56.14 in²
 Max stitch: 7.0 mm
 Min stitch: 0.0 mm
 Max jump: 7.0 mm
 Total thread: 88.61ft
 Total bobbin: 30.36ft

Stop Sequence:

#	N#	Color	St.	Code	Name	Chart
1.	8	█	5,644	8	Black	Default