

# Production Worksheet

Wilcom EmbroideryStudio - Designing



Design: **3**

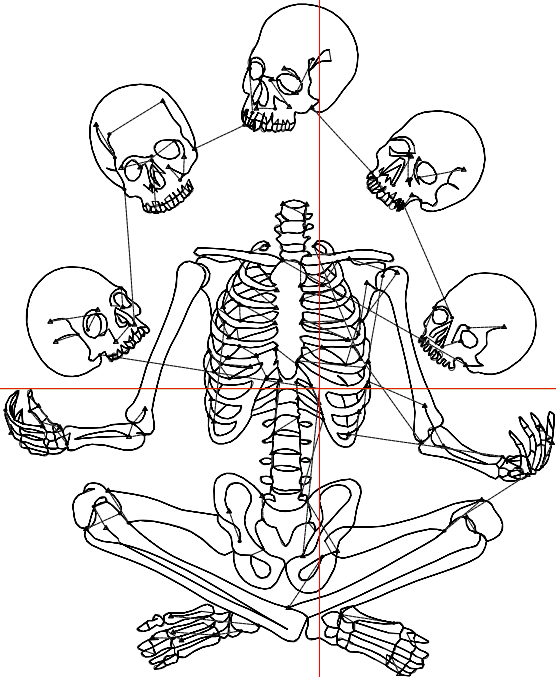
Title:

Stitches: 8,813  
 Height: 3.50 in  
 Width: 2.86 in  
 Colors: 1  
 Colorway: Colorway 1  
 Zoom: 1:1

Machine format: Tajima  
 Color changes: 0  
 Stops: 1  
 Trims: 99  
 Appliqués: 0  
 Left: 41.6 mm  
 Right: 31.0 mm  
 Up: 50.8 mm  
 Down: 38.0 mm  
 EndX: 0.00 in  
 EndY: 0.00 in  
 Area: 9.99 in<sup>2</sup>  
 Max stitch: 6.1 mm  
 Min stitch: 0.0 mm  
 Max jump: 6.1 mm  
 Total thread: 94.43ft  
 Total bobbin: 21.50ft

Stop Sequence:

#	N#	Color	St.	Code	Name	Chart
1.	8	█	8,811	8	Black	Default



# Production Worksheet

Wilcom EmbroideryStudio - Designing



Design: **4**

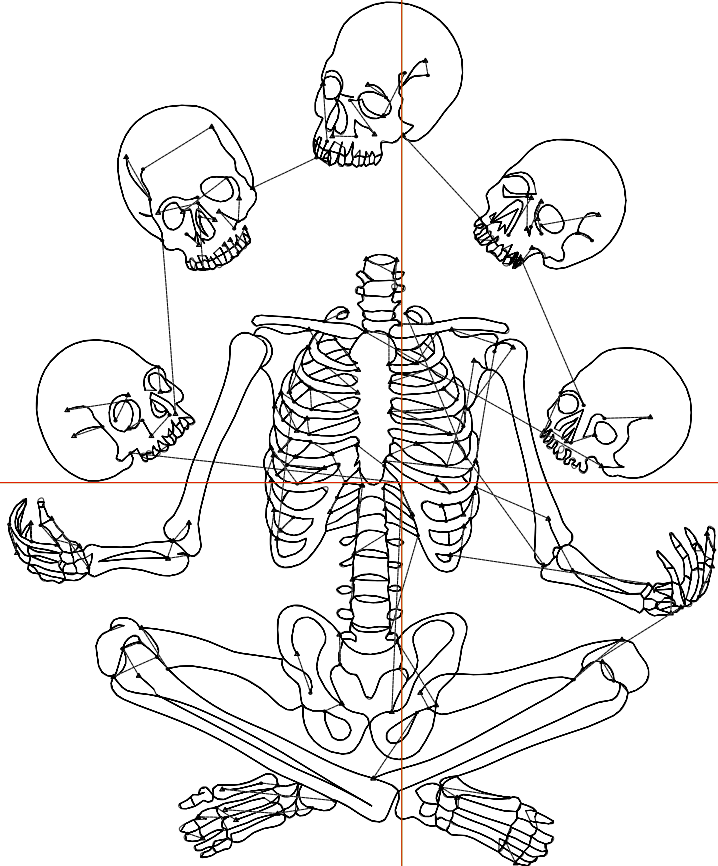
Title:

Stitches: 10,692  
Height: 4.50 in  
Width: 3.68 in  
Colors: 1  
Colorway: Colorway 1  
Zoom: 1:1

Machine format: Tajima  
Color changes: 0  
Stops: 1  
Trims: 134  
Appliqués: 0  
Left: 52.0 mm  
Right: 41.4 mm  
Up: 63.5 mm  
Down: 50.7 mm  
EndX: 0.00 in  
EndY: 0.00 in  
Area 16.53 in<sup>2</sup>  
Max stitch: 6.5 mm  
Min stitch: 0.0 mm  
Max jump: 6.6 mm  
Total thread: 117.33ft  
Total bobbin: 27.76ft

Stop Sequence:

#	N#	Color	St.	Code	Name	Chart
1.	8	█	10,690	8	Black	Default



# Production Worksheet

Wilcom EmbroideryStudio - Designing



Design: **5**

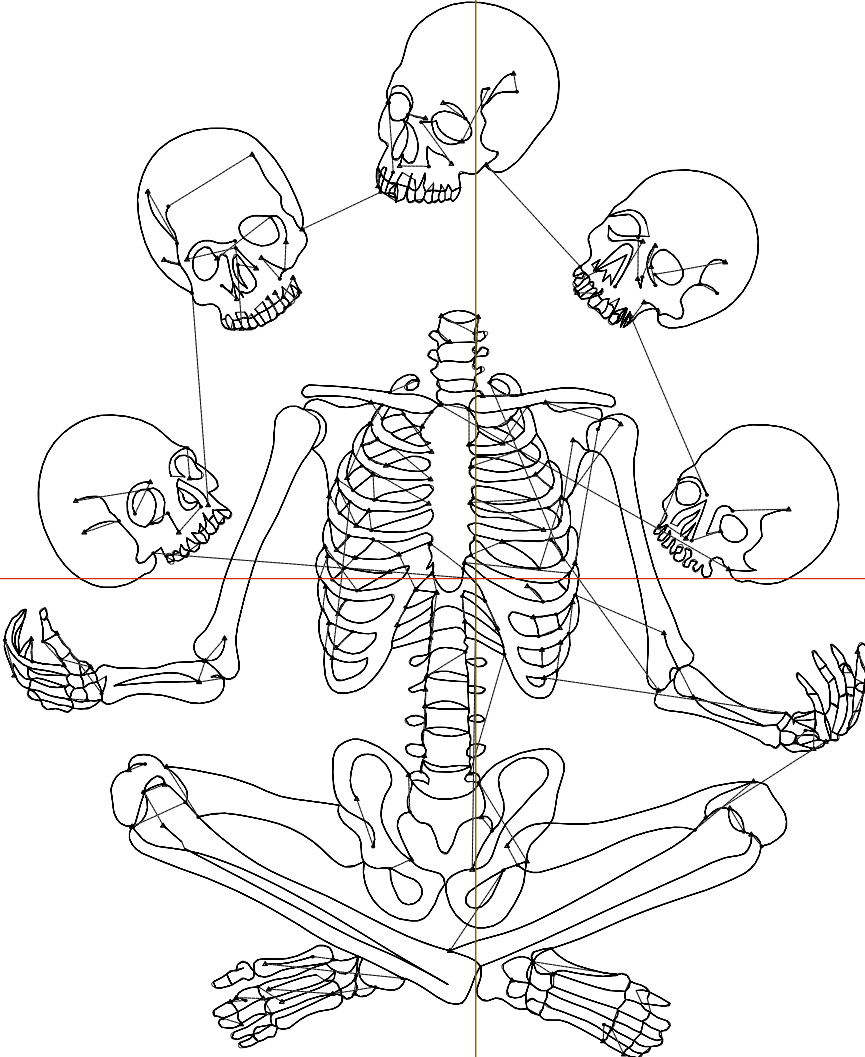
Title:

Stitches: 12,311  
Height: 5.50 in  
Width: 4.49 in  
Colors: 1  
Colorway: Colorway 1  
Zoom: 1:1

Machine format: Tajima  
Color changes: 0  
Stops: 1  
Trims: 162  
Appliqués: 0  
Left: 62.4 mm  
Right: 51.7 mm  
Up: 76.3 mm  
Down: 63.4 mm  
EndX: 0.00 in  
EndY: 0.00 in  
Area: 24.70 in<sup>2</sup>  
Max stitch: 6.4 mm  
Min stitch: 0.0 mm  
Max jump: 6.4 mm  
Total thread: 138.42ft  
Total bobbin: 33.96ft

Stop Sequence:

#	N#	Color	St.	Code	Name	Chart
1.	8	█	12,309	8	Black	Default



# Production Worksheet

Wilcom EmbroideryStudio - Designing



Design: **6**

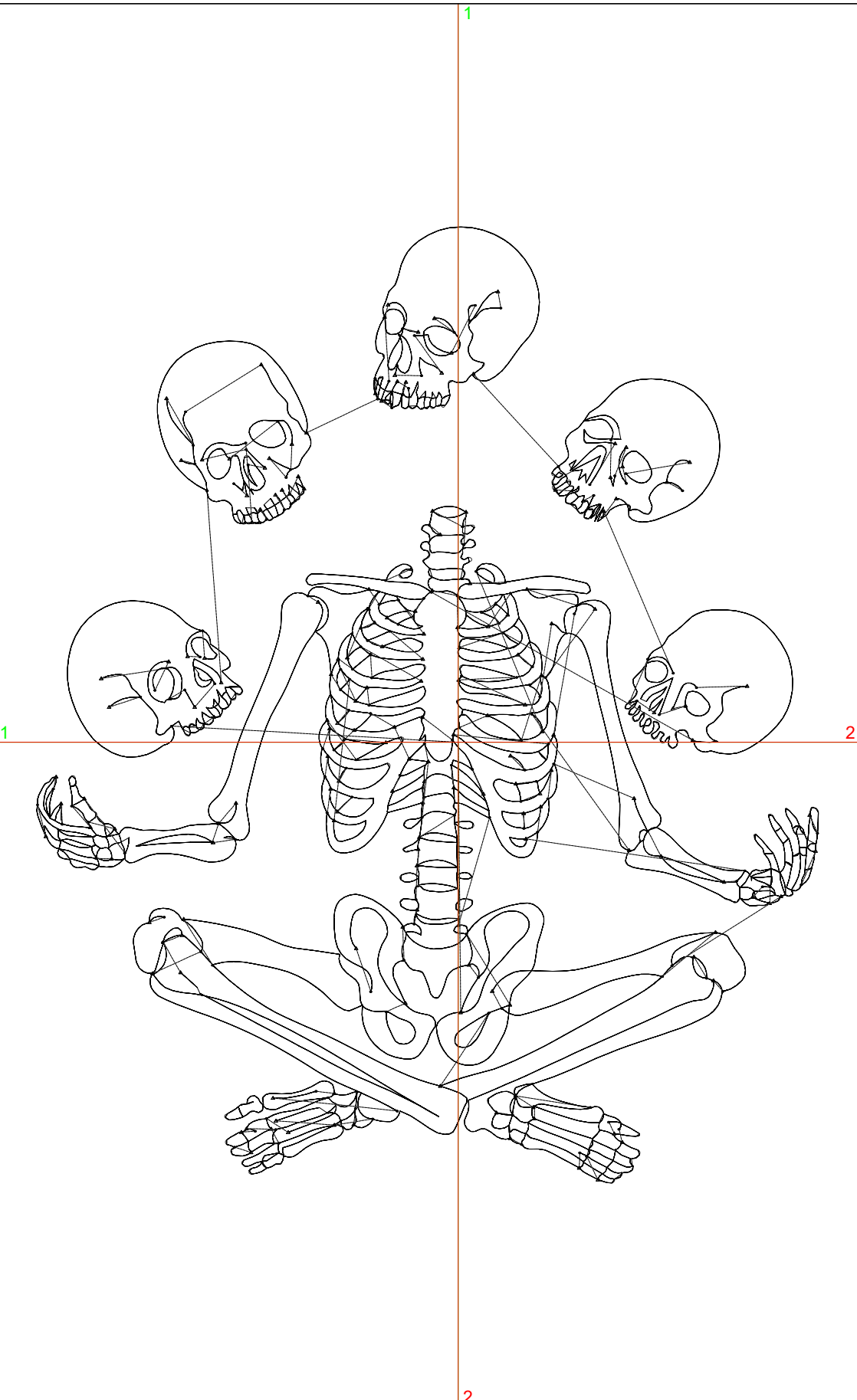
Title:

Stitches: 13,878  
Height: 6.50 in  
Width: 5.31 in  
Colors: 1  
Colorway: Colorway 1  
Zoom: 1:1

Machine format: Tajima  
Color changes: 0  
Stops: 1  
Trims: 180  
Appliqués: 0  
Left: 72.8 mm  
Right: 62.1 mm  
Up: 89.0 mm  
Down: 76.0 mm  
EndX: 0.00 in  
EndY: 0.00 in  
Area: 34.50 in<sup>2</sup>  
Max stitch: 7.0 mm  
Min stitch: 0.0 mm  
Max jump: 7.0 mm  
Total thread: 158.99ft  
Total bobbin: 40.06ft

Stop Sequence:

#	N#	Color	St.	Code	Name	Chart
1.	8	█	13,876	8	Black	Default



# Production Worksheet

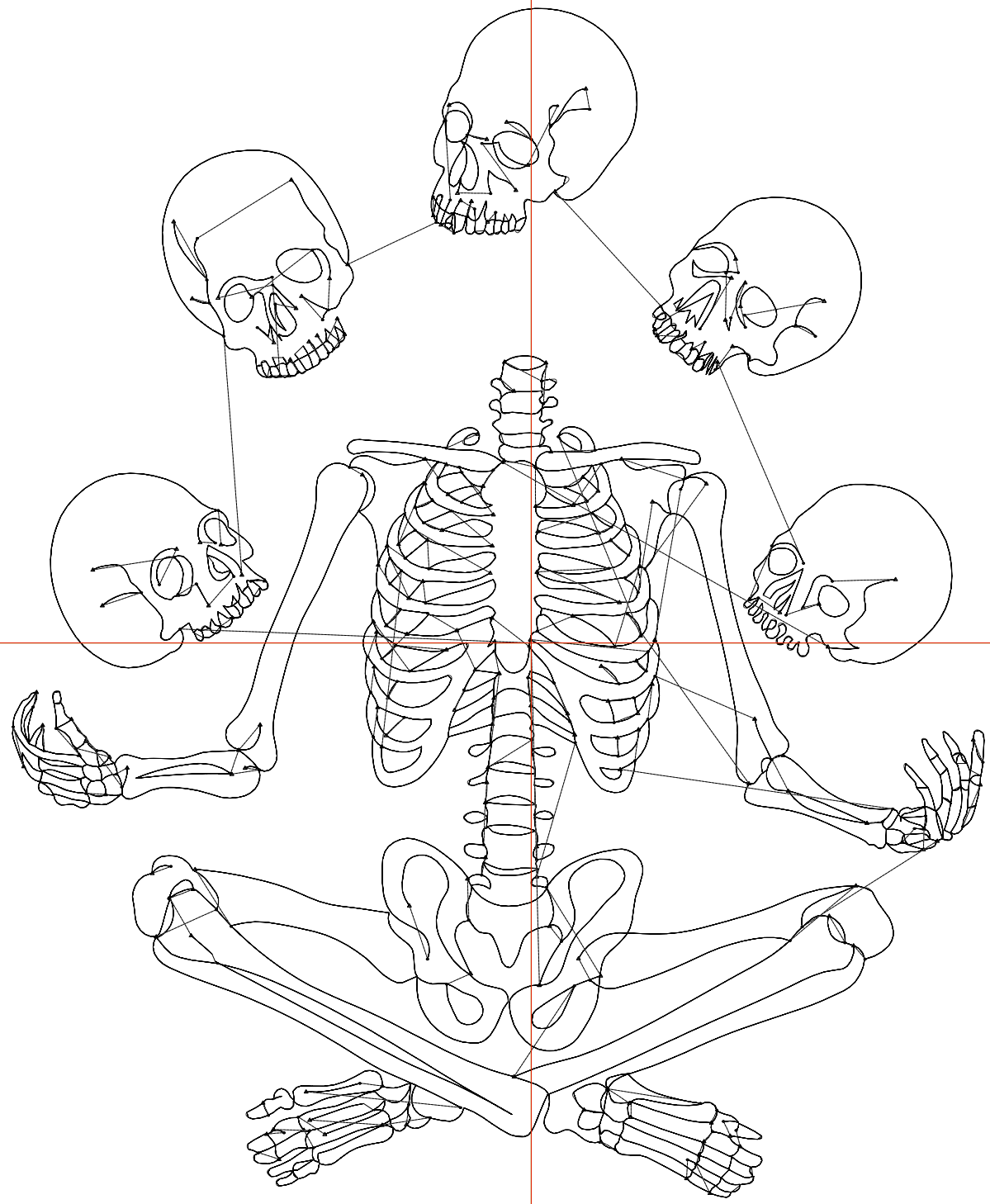
Wilcom EmbroideryStudio - Designing



Design: **7**

Title:

Stitches: 15,321  
Height: 7.50 in  
Width: 6.13 in  
Colors: 1  
Colorway: Colorway 1  
Zoom: 1:1



# Production Worksheet

Wilcom EmbroideryStudio - Designing



Design: **7**

Title:

Stitches: 15,321  
 Height: 7.50 in  
 Width: 6.13 in  
 Colors: 1  
 Colorway: Colorway 1  
 Zoom: 1:1

Machine format: Tajima  
 Color changes: 0  
 Stops: 1  
 Trims: 198  
 Appliqués: 0  
 Left: 83.1 mm  
 Right: 72.5 mm  
 Up: 101.7 mm  
 Down: 88.8 mm  
 EndX: 0.00 in  
 EndY: 0.00 in  
 Area 45.96 in<sup>2</sup>  
 Max stitch: 6.8 mm  
 Min stitch: 0.0 mm  
 Max jump: 6.9 mm  
 Total thread: 178.65ft  
 Total bobbin: 46.10ft

Stop Sequence:

#	N#	Color	St.	Code	Name	Chart
1.	8	█	15,319	8	Black	Default