

# Production Worksheet

Wilcom EmbroideryStudio - Designing



Design: **3**

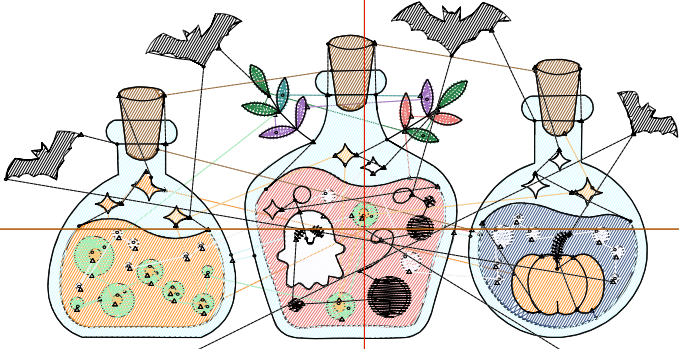
Title:

Stitches: 8,949  
 Height: 2.30 in  
 Width: 3.50 in  
 Colors: 12  
 Colorway: Colorway 1  
 Zoom: 1:1

Machine format: Tajima  
 Color changes: 11  
 Stops: 12  
 Trims: 103  
 Appliqués: 0  
 Left: 47.4 mm  
 Right: 41.4 mm  
 Up: 30.0 mm  
 Down: 28.4 mm  
 EndX: 0.00 in  
 EndY: 0.00 in  
 Area: 8.05 in<sup>2</sup>  
 Max stitch: 7.1 mm  
 Min stitch: 0.0 mm  
 Max jump: 6.9 mm  
 Total thread: 119.41ft  
 Total bobbin: 33.63ft

Stop Sequence:

#	N#	Color	St.	Code	Name	Chart
1.	12		600	12	Orange	Default
2.	2		395		R66 G94 B140	
3.	3		659		R232 G121 B117	
4.	1		193		R41 G130 B71	
5.	4		128		R159 G110 B191	
6.	6		45		R61 G150 B149	
7.	5		396		R165 G240 B184	
8.	9		1,869		R218 G251 B255	
9.	14		319	14	Brown	Default
10.	16		252	16	Sand	Default
11.	7		536		R251 G250 B255	
12.	8		3,555	8	Black	Default



**PICK YOUR POISON**

# Production Worksheet

Wilcom EmbroideryStudio - Designing



Design: **4**

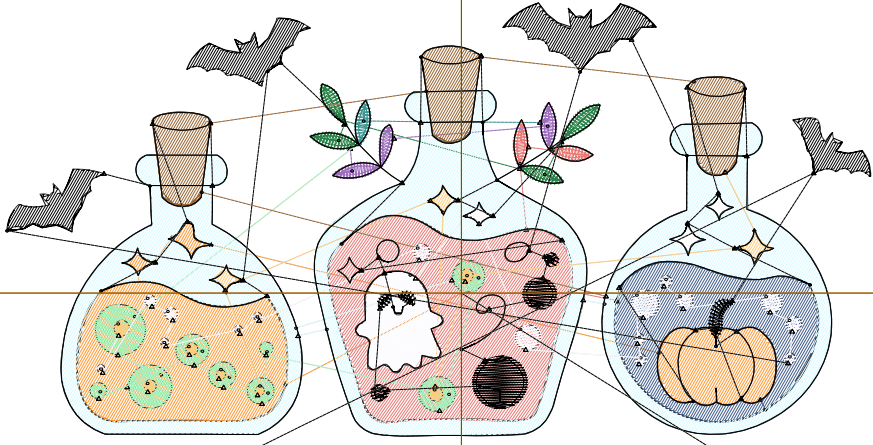
Title:

Stitches: 11,704  
 Height: 2.96 in  
 Width: 4.50 in  
 Colors: 12  
 Colorway: Colorway 1  
 Zoom: 1:1

Machine format: Tajima  
 Color changes: 11  
 Stops: 12  
 Trims: 108  
 Appliqués: 0  
 Left: 60.1 mm  
 Right: 54.1 mm  
 Up: 38.4 mm  
 Down: 36.8 mm  
 EndX: 0.00 in  
 EndY: 0.00 in  
 Area: 13.30 in<sup>2</sup>  
 Max stitch: 7.7 mm  
 Min stitch: 0.0 mm  
 Max jump: 7.0 mm  
 Total thread: 167.77ft  
 Total bobbin: 51.57ft

Stop Sequence:

#	N#	Color	St.	Code	Name	Chart
1.	12		876	12	Orange	Default
2.	2		552		R66 G94 B140	
3.	3		948		R232 G121 B117	
4.	1		236		R41 G130 B71	
5.	4		156		R159 G110 B191	
6.	6		55		R61 G150 B149	
7.	5		479		R165 G240 B184	
8.	9		2,581		R218 G251 B255	
9.	14		449	14	Brown	Default
10.	16		308	16	Sand	Default
11.	7		674		R251 G250 B255	
12.	8		4,388	8	Black	Default



**PICK YOUR POISON**

# Production Worksheet

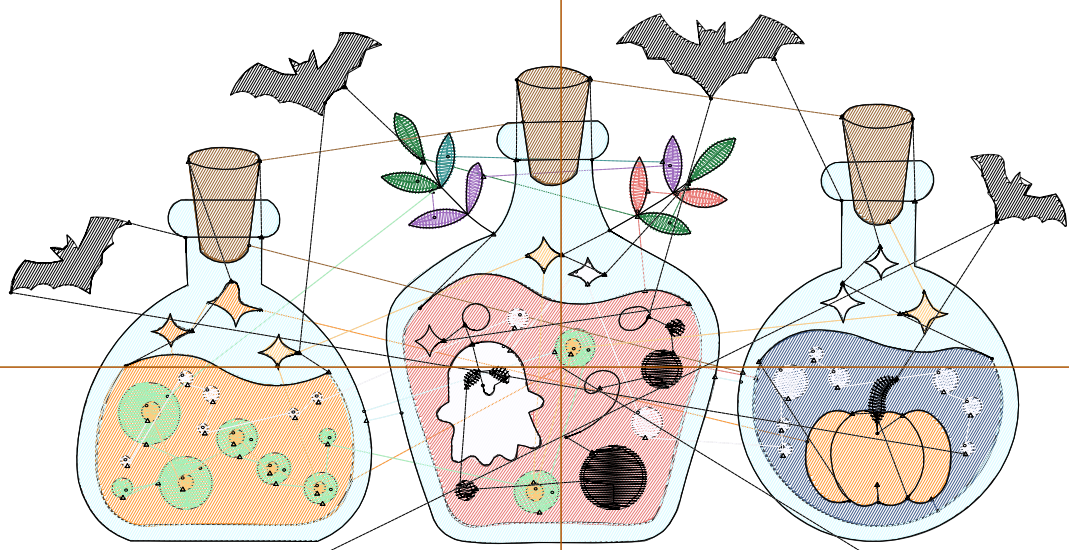
Wilcom EmbroideryStudio - Designing



Design: **5**

Title:

Stitches: 14,669  
Height: 3.61 in  
Width: 5.50 in  
Colors: 12  
Colorway: Colorway 1  
Zoom: 1:1



# PICK YOUR POISON

# Production Worksheet

Wilcom EmbroideryStudio - Designing



Design: **5**

Title:

Stitches: 14,669  
 Height: 3.61 in  
 Width: 5.50 in  
 Colors: 12  
 Colorway: Colorway 1  
 Zoom: 1:1

Machine format: Tajima  
 Color changes: 11  
 Stops: 12  
 Trims: 111  
 Appliqués: 0  
 Left: 72.8 mm  
 Right: 66.8 mm  
 Up: 46.5 mm  
 Down: 45.1 mm  
 EndX: 0.00 in  
 EndY: 0.00 in  
 Area 19.83 in<sup>2</sup>  
 Max stitch: 9.3 mm  
 Min stitch: 0.0 mm  
 Max jump: 7.0 mm  
 Total thread: 224.51ft  
 Total bobbin: 73.67ft

Stop Sequence:

#	N#	Color	St.	Code	Name	Chart
1.	12		1,199	12	Orange	Default
2.	2		742		R66 G94 B140	
3.	3		1,290		R232 G121 B117	
4.	1		274		R41 G130 B71	
5.	4		184		R159 G110 B191	
6.	6		67		R61 G150 B149	
7.	5		551		R165 G240 B184	
8.	9		3,385		R218 G251 B255	
9.	14		592	14	Brown	Default
10.	16		358	16	Sand	Default
11.	7		825		R251 G250 B255	
12.	8		5,200	8	Black	Default

# Production Worksheet

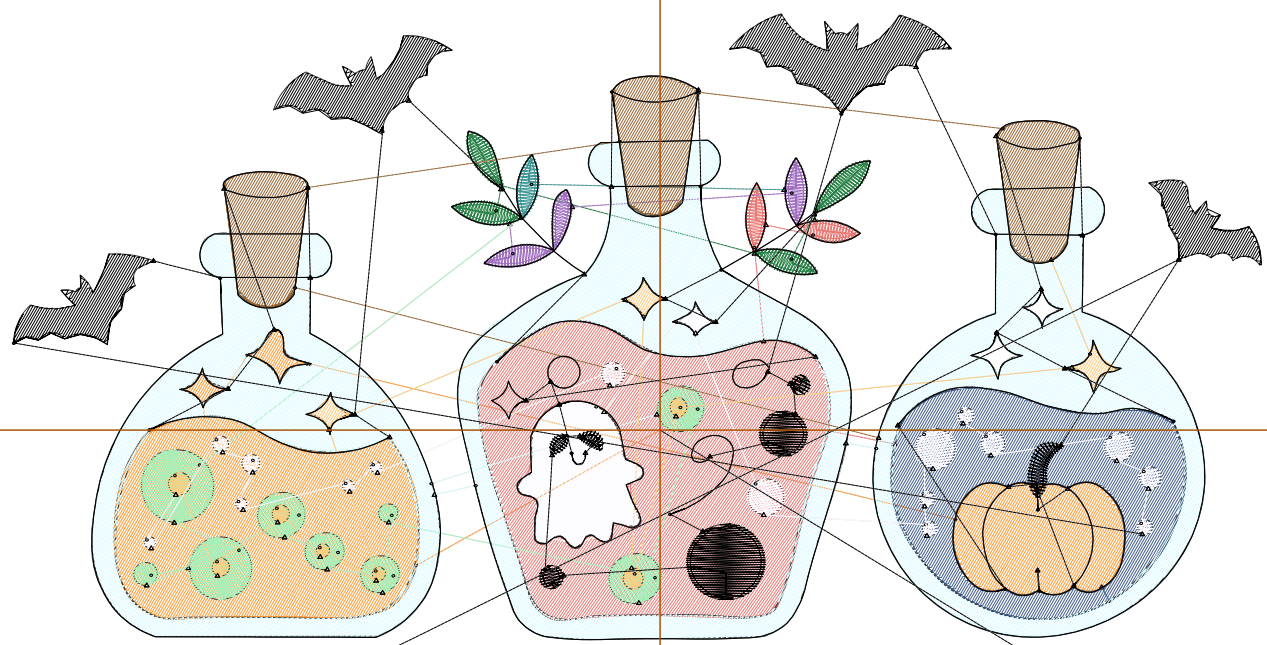
Wilcom EmbroideryStudio - Designing



Design: 6

Title:

Stitches: 17,877  
Height: 4.27 in  
Width: 6.50 in  
Colors: 12  
Colorway: Colorway 1  
Zoom: 1:1



# PICK YOUR POISON

# Production Worksheet

Wilcom EmbroideryStudio - Designing



Design: **6**

Title:

Stitches: 17,877  
 Height: 4.27 in  
 Width: 6.50 in  
 Colors: 12  
 Colorway: Colorway 1  
 Zoom: 1:1

Machine format: Tajima  
 Color changes: 11  
 Stops: 12  
 Trims: 115  
 Appliqués: 0  
 Left: 85.6 mm  
 Right: 79.5 mm  
 Up: 55.0 mm  
 Down: 53.4 mm  
 EndX: 0.00 in  
 EndY: 0.00 in  
 Area 27.74 in<sup>2</sup>  
 Max stitch: 10.5 mm  
 Min stitch: 0.0 mm  
 Max jump: 6.9 mm  
 Total thread: 289.83ft  
 Total bobbin: 99.91ft

Stop Sequence:

#	N#	Color	St.	Code	Name	Chart
1.	12		1,579	12	Orange	Default
2.	2		981		R66 G94 B140	
3.	3		1,686		R232 G121 B117	
4.	1		311		R41 G130 B71	
5.	4		211		R159 G110 B191	
6.	6		75		R61 G150 B149	
7.	5		640		R165 G240 B184	
8.	9		4,228		R218 G251 B255	
9.	14		758	14	Brown	Default
10.	16		398	16	Sand	Default
11.	7		968		R251 G250 B255	
12.	8		6,040	8	Black	Default

# Production Worksheet

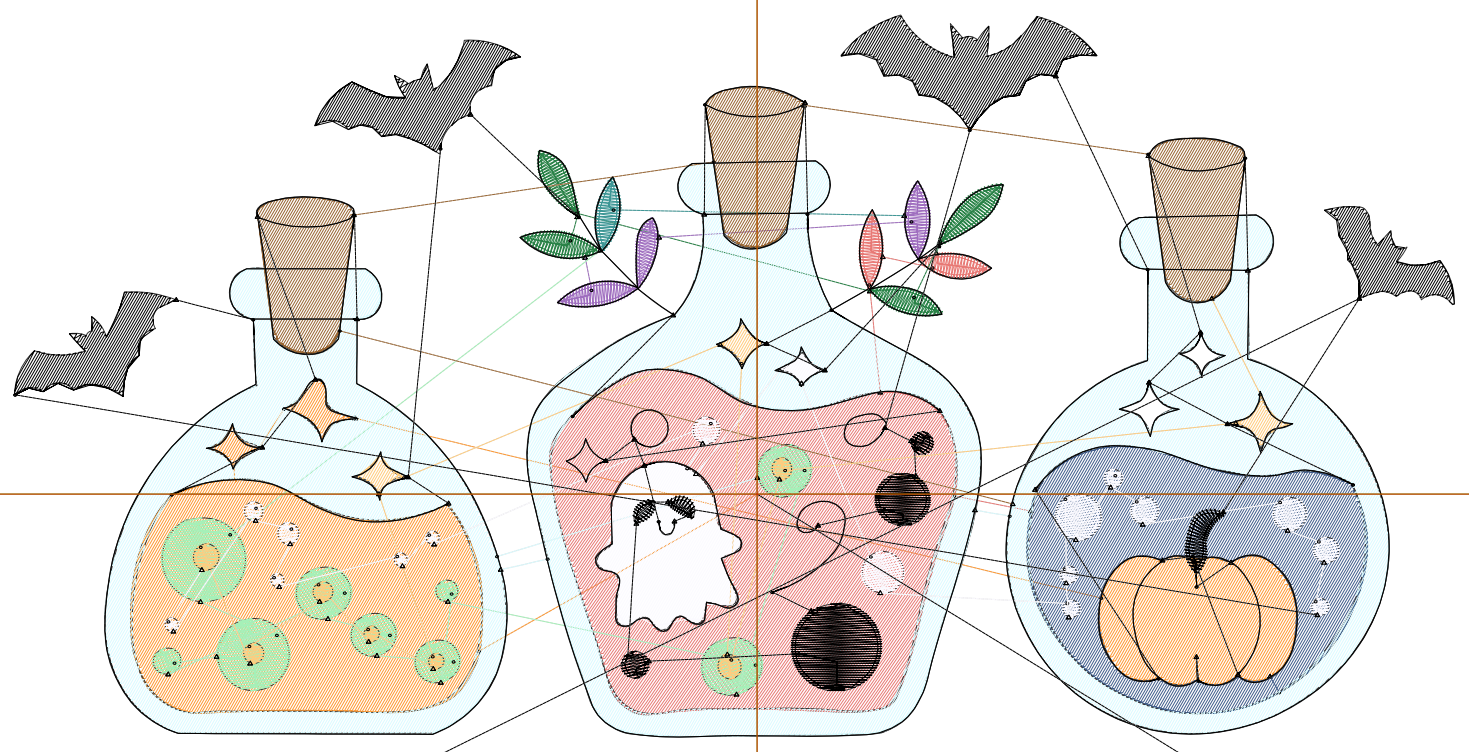
Wilcom EmbroideryStudio - Designing



Design: 7

Title:

Stitches: 21,289  
Height: 4.92 in  
Width: 7.50 in  
Colors: 12  
Colorway: Colorway 1  
Zoom: 1:1



# PICK YOUR POISON

# Production Worksheet

Wilcom EmbroideryStudio - Designing



Design: **7**

Title:

Stitches: 21,289  
 Height: 4.92 in  
 Width: 7.50 in  
 Colors: 12  
 Colorway: Colorway 1  
 Zoom: 1:1

Machine format: Tajima  
 Color changes: 11  
 Stops: 12  
 Trims: 117  
 Appliqués: 0  
 Left: 98.3 mm  
 Right: 92.2 mm  
 Up: 63.2 mm  
 Down: 61.8 mm  
 EndX: 0.00 in  
 EndY: 0.00 in  
 Area 36.89 in<sup>2</sup>  
 Max stitch: 12.0 mm  
 Min stitch: 0.0 mm  
 Max jump: 7.0 mm  
 Total thread: 362.34ft  
 Total bobbin: 129.60ft

Stop Sequence:

#	N#	Color	St.	Code	Name	Chart
1.	12		2,006	12	Orange	Default
2.	2		1,221		R66 G94 B140	
3.	3		2,124		R232 G121 B117	
4.	1		352		R41 G130 B71	
5.	4		237		R159 G110 B191	
6.	6		85		R61 G150 B149	
7.	5		702		R165 G240 B184	
8.	9		5,100		R218 G251 B255	
9.	14		943	14	Brown	Default
10.	16		448	16	Sand	Default
11.	7		1,104		R251 G250 B255	
12.	8		6,965	8	Black	Default