

# Production Worksheet

Wilcom EmbroideryStudio - Designing



Design: **3**

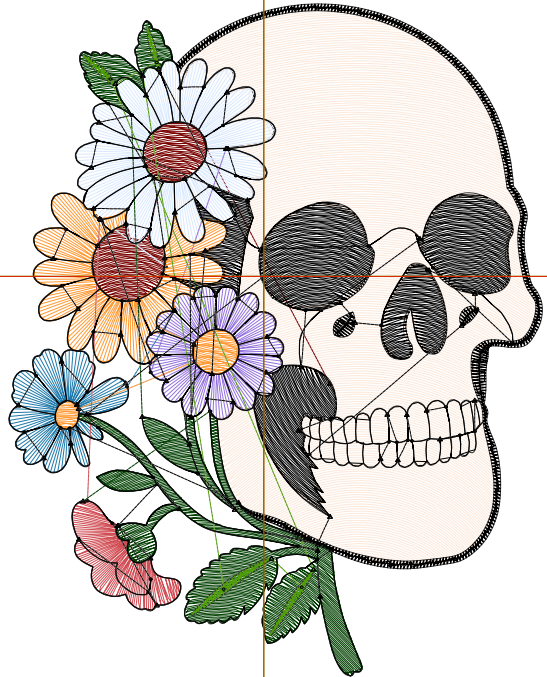
Title:

Stitches: 13,441  
Height: 3.50 in  
Width: 2.78 in  
Colors: 10  
Colorway: Colorway 1  
Zoom: 1:1

Machine format: Tajima  
Color changes: 9  
Stops: 10  
Trims: 86  
Appliqués: 0  
Left: 33.7 mm  
Right: 36.8 mm  
Up: 36.0 mm  
Down: 52.9 mm  
EndX: 0.00 in  
EndY: 0.00 in  
Area 9.72 in<sup>2</sup>  
Max stitch: 10.1 mm  
Min stitch: 0.0 mm  
Max jump: 6.8 mm  
Total thread: 181.51ft  
Total bobbin: 53.35ft

Stop Sequence:

#	N#	Color	St.	Code	Name	Chart
1.	10		3,883		R252 G233 B219	
2.	7		417		R120 G3 B1	
3.	6		736		R219 G234 B255	
4.	5		372		R148 G114 B222	
5.	4		279		R31 G122 B171	
6.	12		799	12	Orange	Default
7.	3		269		R209 G77 B84	
8.	2		1,827		R0 G64 B0	
9.	1		258		R79 G158 B6	
10.	8		4,599	8	Black	Default



# Production Worksheet

Wilcom EmbroideryStudio - Designing



Design: **4**

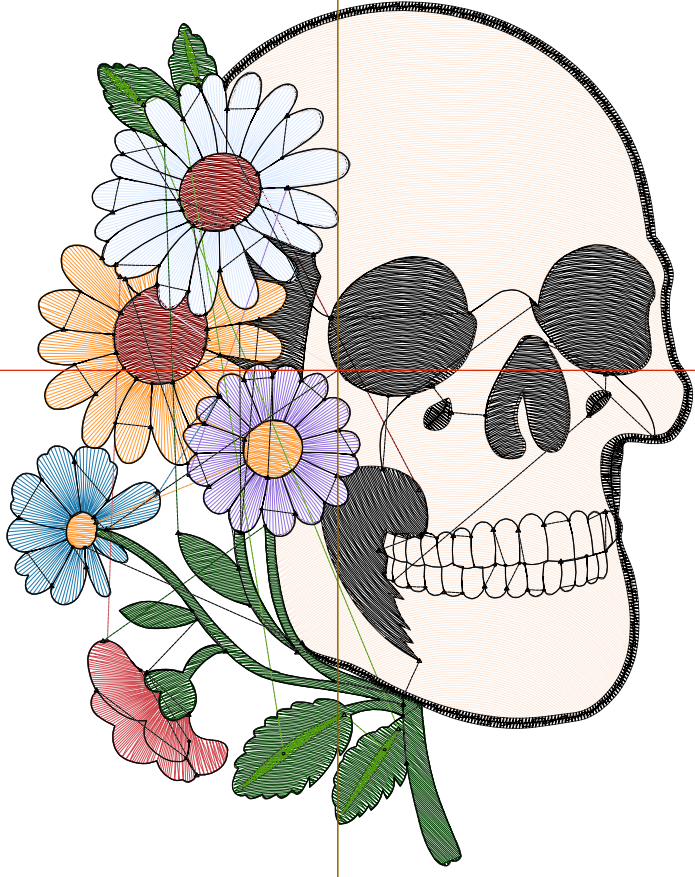
Title:

Stitches: 19,067  
 Height: 4.50 in  
 Width: 3.57 in  
 Colors: 10  
 Colorway: Colorway 1  
 Zoom: 1:1

Machine format: Tajima  
 Color changes: 9  
 Stops: 10  
 Trims: 97  
 Appliqués: 0  
 Left: 43.7 mm  
 Right: 46.9 mm  
 Up: 48.7 mm  
 Down: 65.5 mm  
 EndX: 0.00 in  
 EndY: 0.00 in  
 Area: 16.06 in<sup>2</sup>  
 Max stitch: 11.9 mm  
 Min stitch: 0.0 mm  
 Max jump: 6.9 mm  
 Total thread: 269.62ft  
 Total bobbin: 83.69ft

Stop Sequence:

#	N#	Color	St.	Code	Name	Chart
1.	10		6,033		R252 G233 B219	
2.	7		619		R120 G3 B1	
3.	6		941		R219 G234 B255	
4.	5		545		R148 G114 B222	
5.	4		405		R31 G122 B171	
6.	12		1,074	12	Orange	Default
7.	3		398		R209 G77 B84	
8.	2		2,668		R0 G64 B0	
9.	1		325		R79 G158 B6	
10.	8		6,057	8	Black	Default



# Production Worksheet

Wilcom EmbroideryStudio - Designing



Design: **5**

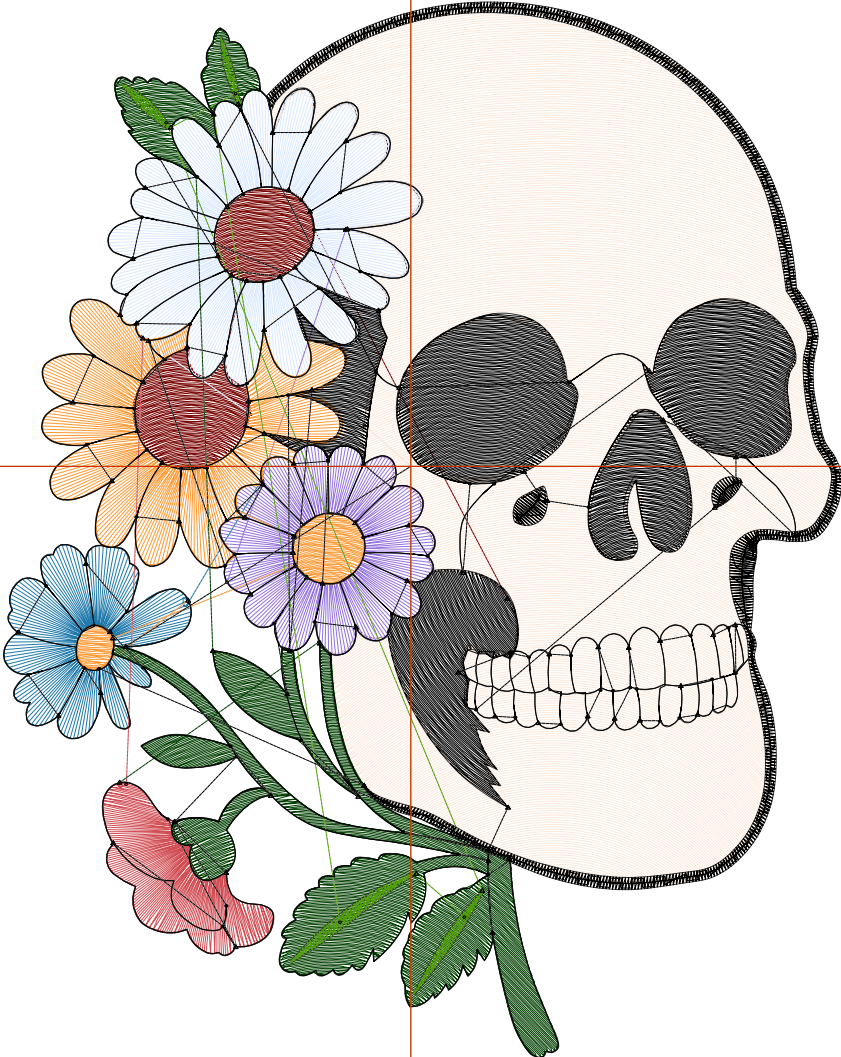
Title:

Stitches: 25,874  
 Height: 5.50 in  
 Width: 4.36 in  
 Colors: 10  
 Colorway: Colorway 1  
 Zoom: 1:1

Machine format: Tajima  
 Color changes: 9  
 Stops: 10  
 Trims: 105  
 Appliqués: 0  
 Left: 53.8 mm  
 Right: 57.0 mm  
 Up: 61.4 mm  
 Down: 78.2 mm  
 EndX: 0.00 in  
 EndY: 0.00 in  
 Area: 23.99 in<sup>2</sup>  
 Max stitch: 11.9 mm  
 Min stitch: 0.0 mm  
 Max jump: 7.0 mm  
 Total thread: 378.63ft  
 Total bobbin: 121.82ft

Stop Sequence:

#	N#	Color	St.	Code	Name	Chart
1.	10		8,768	R252	G233 B219	
2.	7		866	R120	G3 B1	
3.	6		1,264	R219	G234 B255	
4.	5		784	R148	G114 B222	
5.	4		545	R31	G122 B171	
6.	12		1,440	12	Orange	Default
7.	3		535	R209	G77 B84	
8.	2		3,625	R0	G64 B0	
9.	1		406	R79	G158 B6	
10.	8		7,639	8	Black	Default



# Production Worksheet

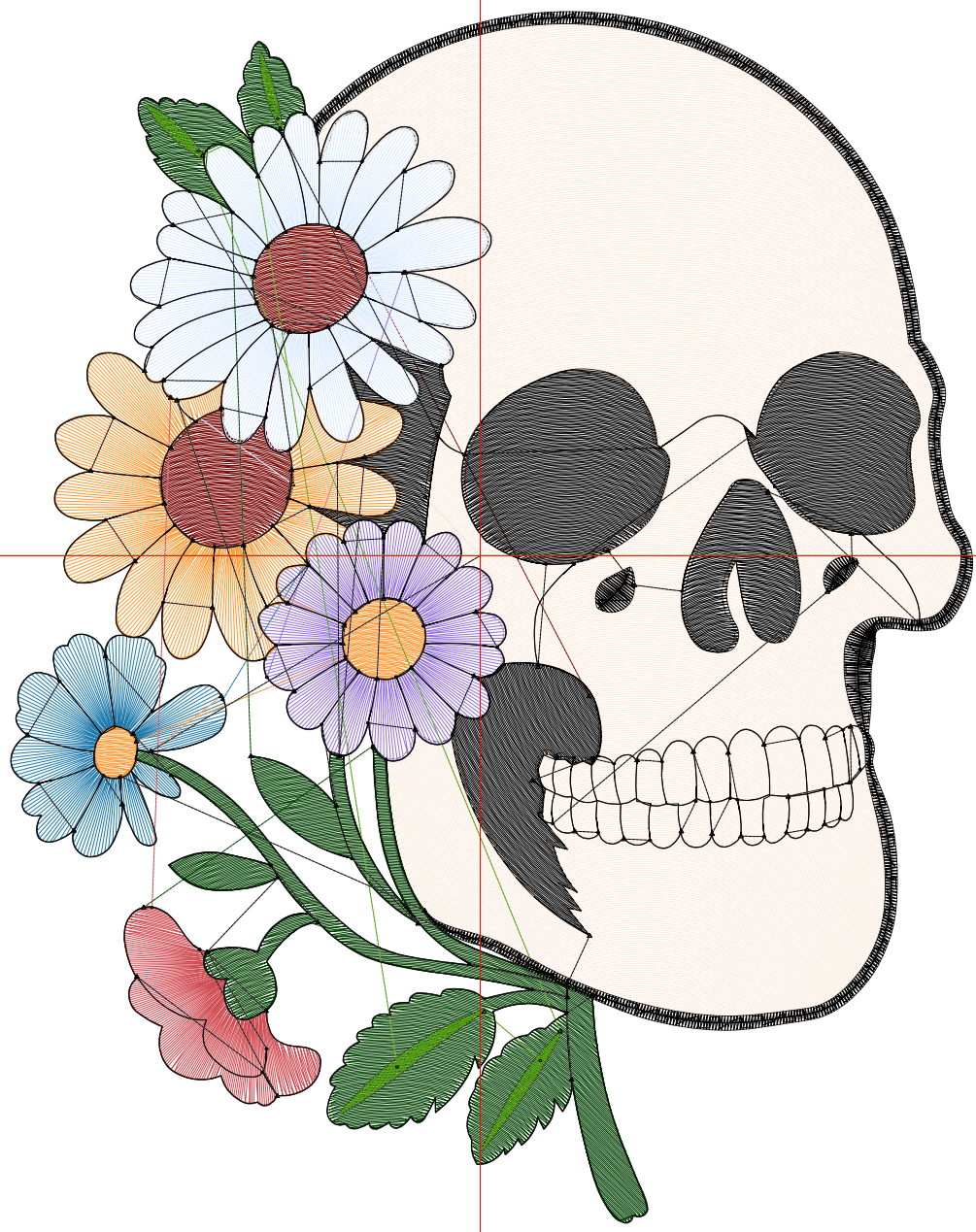
Wilcom EmbroideryStudio - Designing



Design: **6**

Title:

Stitches: 33,655  
Height: 6.50 in  
Width: 5.16 in  
Colors: 10  
Colorway: Colorway 1  
Zoom: 1:1



# Production Worksheet

Wilcom EmbroideryStudio - Designing



Design: **6**

Title:

Stitches: 33,655  
 Height: 6.50 in  
 Width: 5.16 in  
 Colors: 10  
 Colorway: Colorway 1  
 Zoom: 1:1

Machine format: Tajima  
 Color changes: 9  
 Stops: 10  
 Trims: 113  
 Appliqués: 0  
 Left: 63.9 mm  
 Right: 67.1 mm  
 Up: 74.1 mm  
 Down: 90.9 mm  
 EndX: 0.00 in  
 EndY: 0.00 in  
 Area 33.52 in<sup>2</sup>  
 Max stitch: 7.0 mm  
 Min stitch: 0.0 mm  
 Max jump: 7.0 mm  
 Total thread: 506.41ft  
 Total bobbin: 167.28ft

Stop Sequence:

#	N#	Color	St.	Code	Name	Chart
1.	10		11,815		R252 G233 B219	
2.	7		1,158		R120 G3 B1	
3.	6		1,787		R219 G234 B255	
4.	5		997		R148 G114 B222	
5.	4		699		R31 G122 B171	
6.	12		1,832	12	Orange	Default
7.	3		689		R209 G77 B84	
8.	2		4,770		R0 G64 B0	
9.	1		479		R79 G158 B6	
10.	8		9,427	8	Black	Default

# Production Worksheet

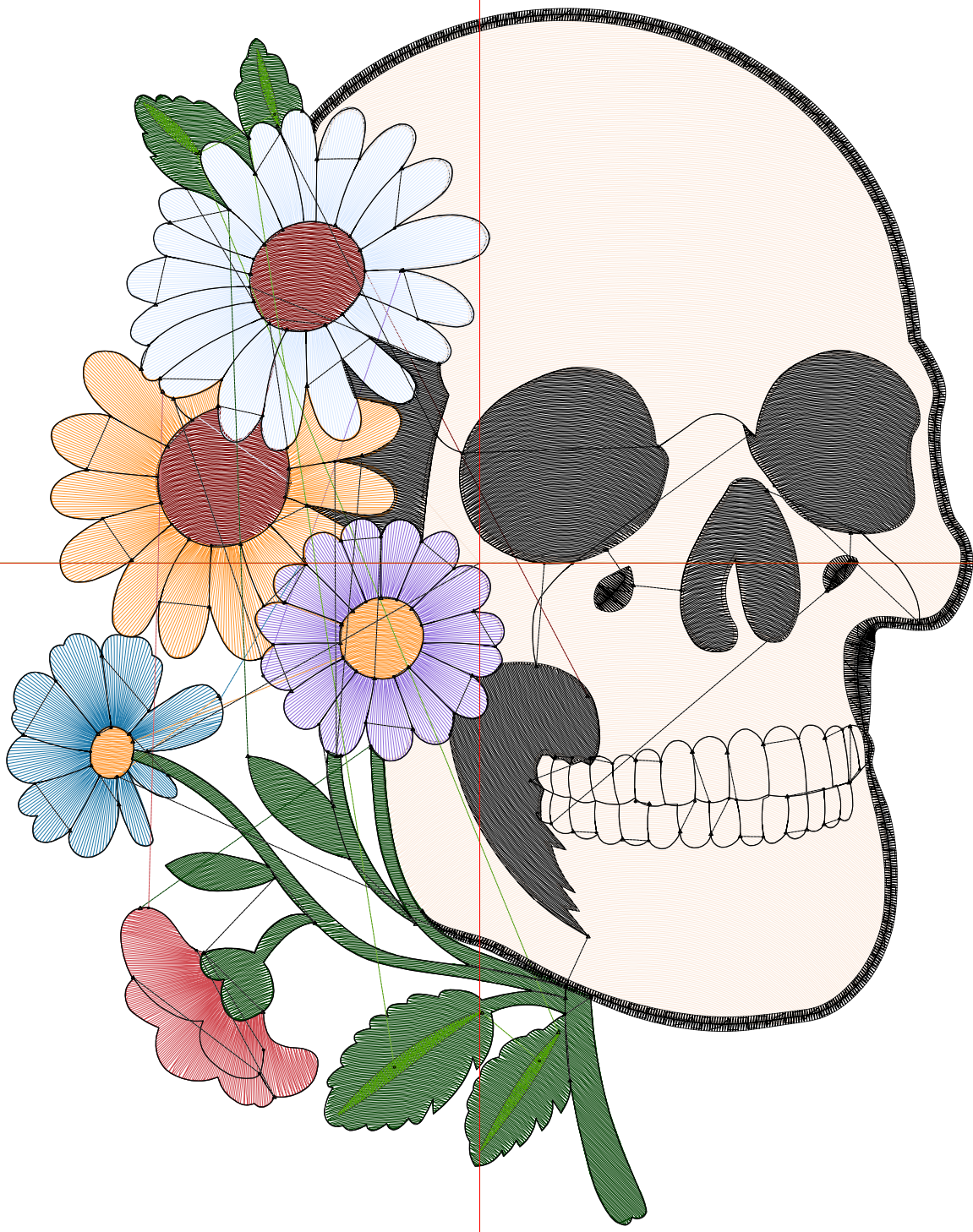
Wilcom EmbroideryStudio - Designing



Design: **7**

Title:

Stitches: 42,277  
Height: 7.50 in  
Width: 5.95 in  
Colors: 10  
Colorway: Colorway 1  
Zoom: 1:1



# Production Worksheet

Wilcom EmbroideryStudio - Designing



Design: **7**

Title:

Stitches: 42,277  
 Height: 7.50 in  
 Width: 5.95 in  
 Colors: 10  
 Colorway: Colorway 1  
 Zoom: 1:1

Machine format: Tajima  
 Color changes: 9  
 Stops: 10  
 Trims: 117  
 Appliqués: 0  
 Left: 74.0 mm  
 Right: 77.2 mm  
 Up: 86.8 mm  
 Down: 103.6 mm  
 EndX: 0.00 in  
 EndY: 0.00 in  
 Area 44.63 in<sup>2</sup>  
 Max stitch: 7.0 mm  
 Min stitch: 0.0 mm  
 Max jump: 7.0 mm  
 Total thread: 650.15ft  
 Total bobbin: 218.94ft

Stop Sequence:

#	N#	Color	St.	Code	Name	Chart
1.	10		15,602		R252 G233 B219	
2.	7		1,469		R120 G3 B1	
3.	6		2,127		R219 G234 B255	
4.	5		1,254		R148 G114 B222	
5.	4		887		R31 G122 B171	
6.	12		2,279	12	Orange	Default
7.	3		859		R209 G77 B84	
8.	2		5,986		R0 G64 B0	
9.	1		547		R79 G158 B6	
10.	8		11,265	8	Black	Default